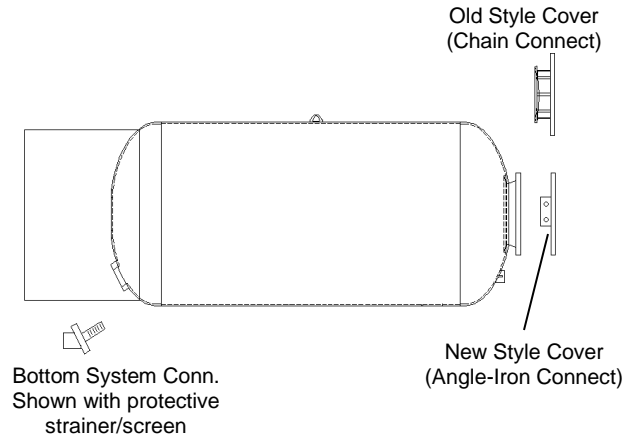
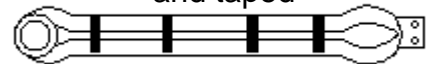


1. Tank must be drained and all pressure released.
2. Bladder is attached to top and bottom of tank.
3. Remove cover plate from the system connection at the bottom of the tank, this will expose the collar portion of the bladder. Take and push this collar portion into the tank. This will release the bladder from the bottom of the tank.
4. Remove all nuts and bolts from the top cover located at the top center of the tank. Carefully lift up the plate and note that the bladder is attached to the bottom side of the plate. Detach the bladder from the top plate.
5. Remove the old bladder.
6. Take the new bladder and roll it lengthwise in a tube shape. Tape can be used to keep the bladder in this tube shape.
7. Insert the new bladder into the large opening on the top of the tank. As the bladder is being inserted, make sure the bladder's molded flange is aligned to meet the steel flanged system connection at the bottom of the tank. If tape was used on the bladder, remove it as the bladder is being inserted.
8. At the bottom flange (system connection) reach into the tank and pull the bladder flange through, and position on steel flange. Re-attach cover plate to complete the system connection. **NOTE: Make sure the strainer is intact to the bottom plate before installing. Caution: Without bottom strainer the bladder will rupture during air charging.**
9. From the top flange, make sure the bladder is not twisted inside the tank. Re-attach bladder to the cover plate. Re-attach cover plate on to the tank and make an airtight seal.
10. Re-charge the tank to the required pre-charge pressure.

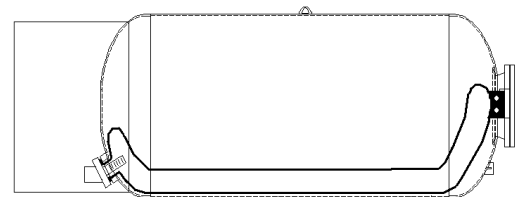
Components



Bladder – shown rolled and taped



Bladder Installed



CLICK ANYWHERE on THIS PAGE to RETURN TO WATER TANK BLADDER REPLACEMENT at InspectApedia.com