

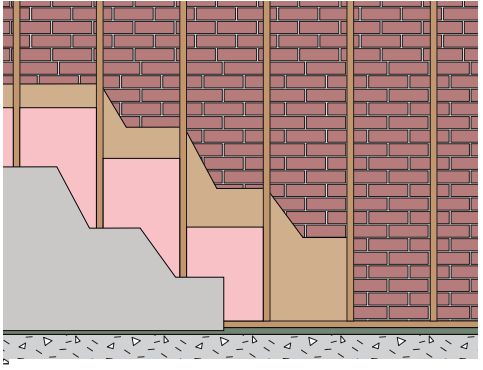


800-879-3348

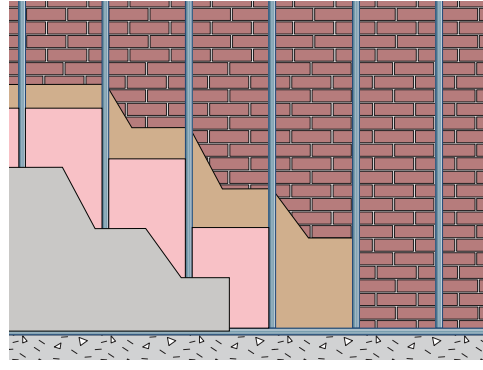
info@mtidry.com

www.MTIDRY.com

# MTI Retrofit Brick Tie™ (RBT 7381) Installation Guide



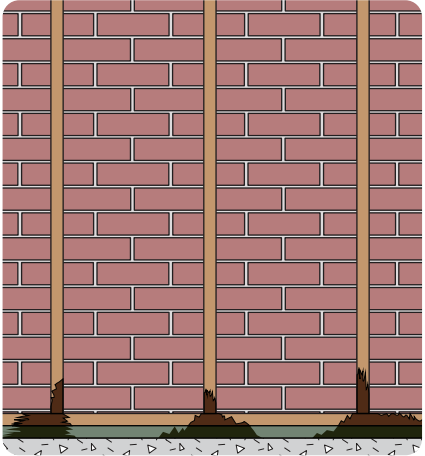
Example 1 - Wood Framing



Example 2 - Steel Framing

## Step 1

Remove all deteriorated material from area to be retrofitted.



## Step 2

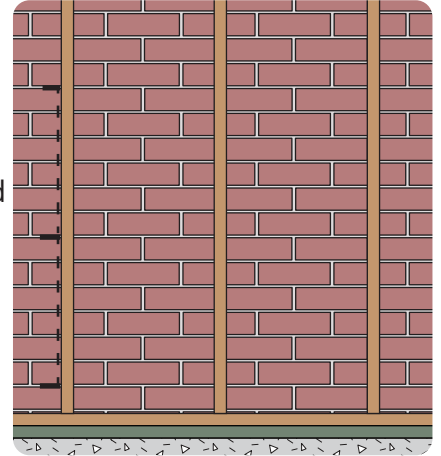
Replace any and all structural components as needed. **DO NOT** replace deteriorated exterior sheathing. Vacuum clean area to be retrofitted.



Industrial Vac

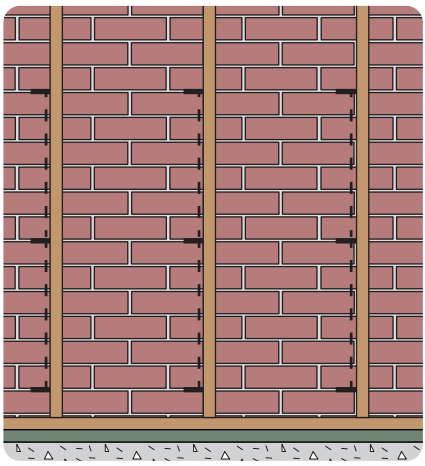


NO HIGH IMPACT TOOLS



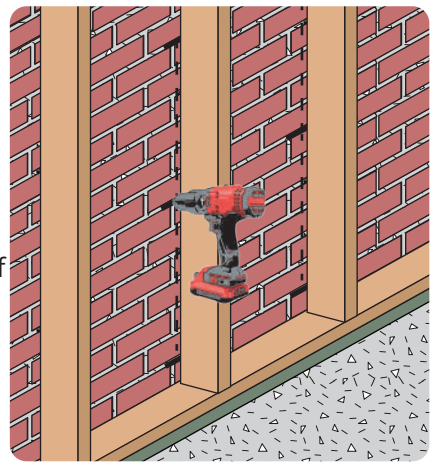
## Step 3

Layout retrofit brick tie pattern on backside of brick veneer on studs on a 16" rise pattern. Starting on floor level. Note: This is the time to determine if a retrofit weep and flashing system is required. If so, see MTI's Retrofit Weep™ Installation guide.



## Step 4

Using a hammer drill and 3/8" masonry bit, drill 3/8" hole 3" into mortar head or bed joint from back side of brick veneer on predetermined grid pattern in line with the edge of stud in this grid pattern.



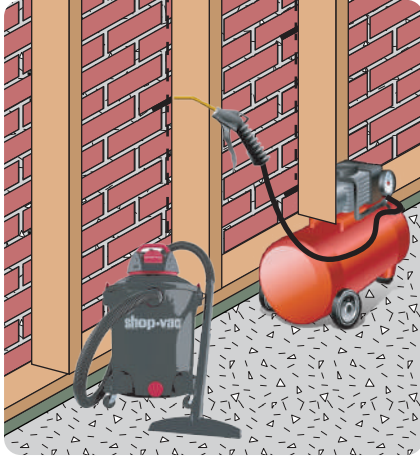
**Note: Involve all required professional services.**

Over

# MTI Retrofit Brick Tie™ (RBT 7381) Installation Guide

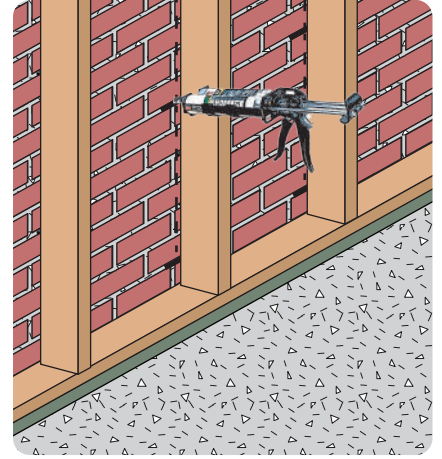
## Step 5

Thoroughly clean 3/8" hole that has been drilled into mortar joint.



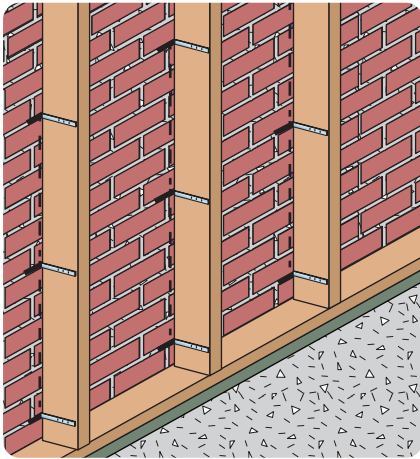
## Step 6

Apply Helix two-part epoxy, HIT-RE 500 V3, into 3/8" hole that has been drilled into mortar joint using a Hilti HDM 500 manual adhesive epoxy dispenser. Ensure hole is completely filled until Helix two-part epoxy is overflowing.



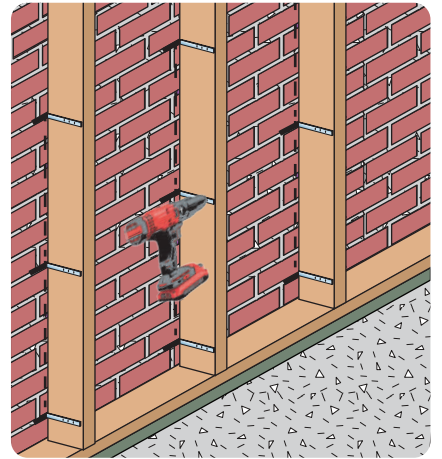
## Step 7

Immediately insert a MTI Retrofit Brick Tie™ (RBT 7381) and work it into the Helix two-part epoxy while aligning it with the side surface of the appropriate stud.



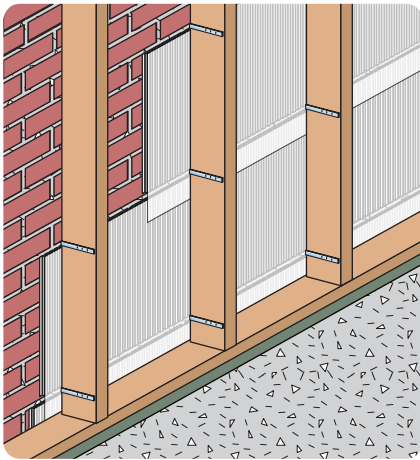
## Step 8

Fasten MTI Retrofit Brick Tie™ (RBT 7381) to appropriate stud using the appropriate fasteners for wood studs or steel studs.



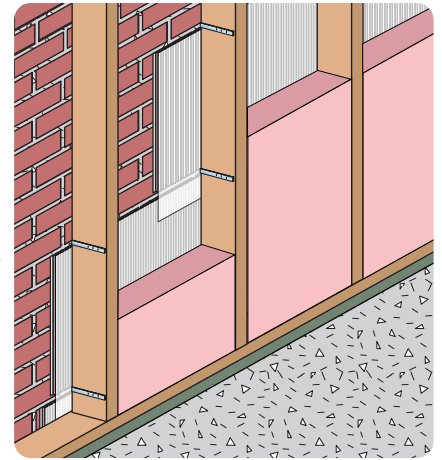
## Step 9

Install MTI Sure Cavity™ (SC 5016) or Fire-Rated Sure Cavity™ (FRSC 5016). Cut Sure Cavity™ into 3' to 4' pieces for easy installation. Sure Cavity™ fabric should face the interior of building (you).



## Step 10

Apply foam insulation into the remainder of brick cavity and stud cavity. Stud cavity should be foamed full. Note: Install strapping to the interior of stud wall if required.



**Note: Involve all required professional services.**