



**SPECIFICATIONS, LISTINGS AND APPROVALS**

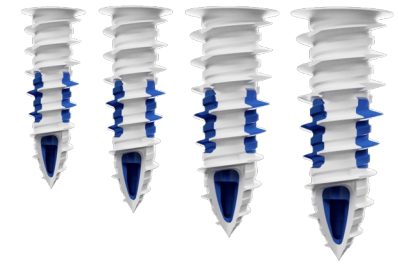
**Body Material:** Reinforced Nylon and Acetal

**Screws Materials:** Carbon Steel AISI-1018 with Zinc plating ASTM B633 Type III

**Available Sizes:** #6 (3,5mm), #8 (4mm), #10 (5mm) and #12 (6mm)



#6 3,5mm #8 4mm #10 5mm #12 6mm

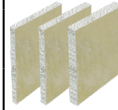


**KEY FEATURES & BENEFITS**

- ▶ Bi-material technology
- ▶ Fast and easy to install
- ▶ No pre-drilling, the only tool required is a screwdriver
- ▶ Designed to install smoothly and easily through drywall
- ▶ Expands and grips tightly behind the wall
- ▶ Higher weight loads
- ▶ Anti-vibration
- ▶ Suitable for ceiling application

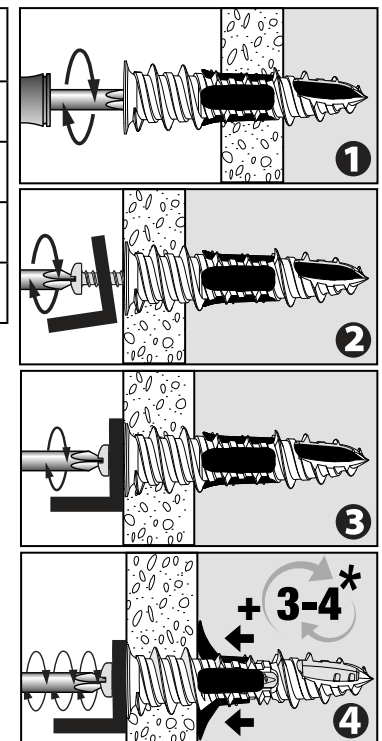
**MATERIALS**

DRYWALL THICKNESS	ANCHOR SIZES	
	3/8" (10mm)	#6 (3,5mm) et #8 (4mm)
1/2" (13mm)	#6 (3,5mm), #8 (4mm), #10 (5mm) et #12 (6mm)	
5/8" (16mm)	#10 (5mm) et #12 (6mm)	



ANCHOR PARAMETERS *		TOOL TYPE	SAFE WORKING LOADS 2:1					
			DRYWALL 3/8" (10 mm)		DRYWALL 1/2" (13 mm)		DRYWALL 5/8" (16 mm)	
ANCHOR SIZE	SCREW SIZE	PHILLIPS DRIVER	TENSION	SHEAR	TENSION	SHEAR	TENSION	SHEAR
#6 (3,5mm)	#6 x 1-1/2" (3,5mm x 38mm)	#2	35 lb (16 kg)	93 lb (42 kg)	40 lb (18 kg)	105 lb (48 kg)	—	—
#8 (4mm)	#8 x 1-1/2" (4mm x 38mm)	#2	38 lb (17 kg)	100 lb (45 kg)	43 lb (19 kg)	115 lb (52 kg)	—	—
#10 (5mm)	#10 x 1-3/4" (5mm x 44mm)	#3	—	—	50 lb (23 kg)	118 lb (54 kg)	60 lb (27 kg)	175 lb (79 kg)
#12 (6mm)	#12 x 2" (6mm x 50mm)	#4	—	—	55 lb (25 kg)	130 lb (59 kg)	65 lb (29 kg)	205 lb (93 kg)

WALLDRILLER PLUS® MEASUREMENTS	SIZE	ANCHOR DIAMETER	ANCHOR LENGTH	MAX. FIXTURE THICKNESS	SCREW DIAMETER	SCREW LENGTH
	#6 (3,5 mm)	0.570" (14 mm)	1.620" (41 mm)	1/4" (6 mm)	0.138" (3.5 mm)	1-1/2" (38 mm)
	#8 (4 mm)	0.630" (16 mm)	1.720" (44 mm)	5/16" (8 mm)	0.165" (4 mm)	1-1/2" (38 mm)
	#10 (5 mm)	0.690" (18 mm)	2.000" (50 mm)	3/8" (10 mm)	0.199" (5 mm)	1-3/4" (44 mm)
	#12 (6 mm)	0.765" (19 mm)	2.110" (54 mm)	1/2" (13 mm)	0.218" (6 mm)	2" (50 mm)



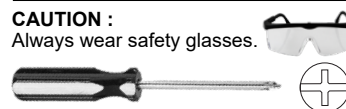
**INSTALLATION INSTRUCTIONS**

1. Using a screwdriver, push the tip of the WallDriller Plus® into the drywall in a screwing motion.
2. Turn clockwise until flush with surface and firmly in place.
3. Insert the screw through the object you need to affix and turn clockwise until the head of the screw is flush with the object surface.
- \* 4. **IMPORTANT:** To activate expansion of the legs, continue tightening 3 to 4 complete turns.

- NOTES:**
- Loads may vary according to the drywall quality.
  - Safe working loads are average tested loads for items flush to wall and will vary with items hung away from the wall.
  - Safe working loads are calculated using a safety factor of 2.
- DO NOT USE FOR MOUNTING TELEVISIONS.**



**TOOLS REQUIRED**



**CAUTION :**  
Always wear safety glasses.

**CLICK ANYWHERE ON THIS PAGE TO RETURN TO WALL ANCHOR CHOICES INFORMATION at InspectApedia.com**