



CLICK ANYWHERE ON THIS PAGE TO RETURN TO WALL ANCHOR CHOICES INFORMATION at InspectApedia.com

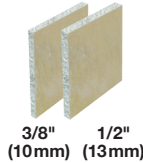
SPECIFICATIONS, LISTINGS AND APPROVALS

Body Material: Nylon
Screw Material: Carbon Steel AISI-1018 with Zinc plating ASTM B633 Type III
Available Size: #8 screw

KEY FEATURES & BENEFITS

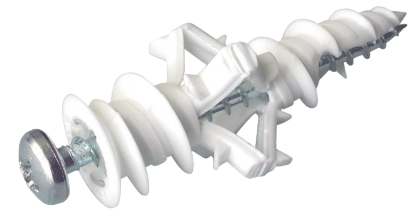
- ▶ Fast and easy to install
- ▶ No pre-drilling, the only tool required is a screwdriver
- ▶ Expands and grips tightly behind the wall
- ▶ Designed to install smoothly and easily through drywall

MATERIALS

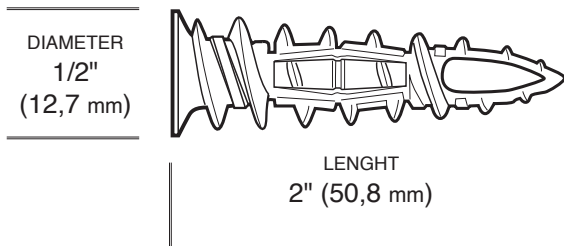


Combined Head
Phillips & slot

ANCHOR PARAMETERS *		SAFE WORKING LOADS 2:1 **			
		DRYWALL 3/8" (10 mm)		DRYWALL 1/2" (13 mm)	
ANCHOR MATERIAL	SCREW SIZE	TENSION	SHEAR	TENSION	SHEAR
Nylon	#8 x 2-1/4"	28 lb (13 kg)	60 lb (27 kg)	35 lb (16 kg)	85 lb (38 kg)



The WallGripper with wings fully extended.



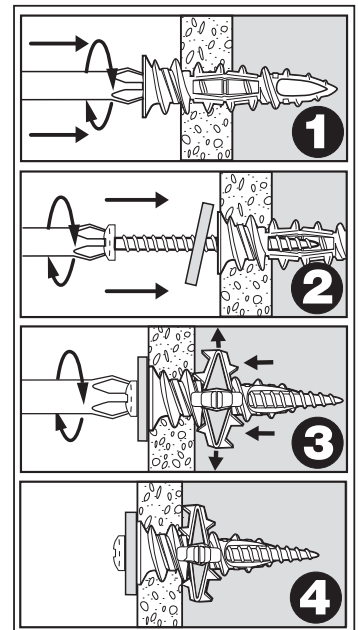
INSTALLATION INSTRUCTIONS

1. Using a screwdriver, push the tip of the Gripper® into the drywall in a screwing motion.
2. Turn clockwise until flush with surface and firmly in place. (Do not overtorque)
3. Insert the screw through the object you need to affix and turn clockwise until firmly in place.

CAUTION : Always wear safety glasses.

NOTES:

- Technical data is provided for a proper use of the anchor
- Safe working loads represent a safety factor of 2:1 from ultimate test loads.
- Loads may vary according to the quality of the drywall.



TOOLS REQUIRED



* For a complete list of the different packaging formats available please visit our website cobraanchors.com

** Loads may vary according to the quality of the drywall.