



Water Conditioner

INSTALLATION, OPERATION AND MAINTENANCE MANUAL



Watts Premier, Inc.
Phone: 800-752-5582

P/N: Sof-Tek

1725 W. Williams Drive C-20
www.wattspremier.com

Phoenix, AZ 85027
Fax: 623-931-0191

Manual Edition: 2/19/08

Notes

(this page left blank intentionally)

Congratulations

on your decision to place your confidence in our superior water treatment appliance. Recognized worldwide for built-in quality, dependability, and ease of service, this appliance represents state-of-the-art in home water treatment.

Important information is contained in this manual which will help you get the maximum benefit and enjoyment from your particular model.

We urge you to read this information carefully now and any time a malfunction may occur. In most cases, these reviews will uncover minor problems that you can correct yourself, thereby saving you time and the cost of an unnecessary service call.

Date of Installation: _____

Model Number: _____

Serial Number: _____

Returned Limited warranty Card Date: _____

Table of Contents

HOW TO GET THE MAXIMUM EFFICIENCY FROM YOUR APPLIANCE	5
CHECKLIST BEFORE INSTALLATION	6
DO'S AND DON'TS	7
REFERENCE ILLUSTRATIONS	8
INSTALLATION GUIDE	8
REFERENCE ILLUSTRATIONS	9
PLUMBING CONNECTIONS	9
INSTALLATION AND START-UP PROCEDURES	12
SETTING THE CONTROLLER	14
DEMAND REGENERATION	14
HARDNESS SETTINGS	15
ELECTRONICS AND CABINET	18
CABINET AND ASSEMBLIES	20
PARTS DIAGRAMS	26
TROUBLESHOOTING	32
SOFTENER SPECIFICATIONS	34
WARRANTY INFORMATION	35

How To Get The Maximum Efficiency From Your Appliance

1. Fill salt cabinet when water level is above salt level. **DO NOT MIX DIFFERENT TYPES OF SALT.** If iron is present in your water, use a salt with an iron-cleaning additive to help keep the resin clean. You may also use a resin cleaner on a monthly basis in place of salt with cleaning additives. If iron is not present in your water, a clean pellet, solar or cube type salt is recommended. The use of rock salt is not recommended because it contains impurities that may clog the injector assembly.
2. You may use a salt substitute (such as potassium chloride) in place of water conditioner salt. If you start with water conditioner salt, you can switch to a salt substitute at any time - or vice versa. **If potassium chloride is used in place of nugget or pellet salt, you must select the potassium option during the programming of the controller. We do not recommend using Potassium Chloride if there is iron in your water.**
3. Should your electricity be turned off for any reason you must reset time of day.
(See page 12)
4. Protect your appliance from freezing, including drain line.
5. By-pass the appliance when servicing the well, plumbing, or pump. When work is completed, turn on the nearest cold water tap until water runs clear before putting appliance back in service. See figures 4 - 5 - 6.

Checklist Before Installation

- 1. Water Pressure** - Not less than 20 psi constant. See page 30.
- 2. Double check hardness** - of water with test strips provided to verify that your appliance is right for the job. See page 10.
- 3. Water Supply Flow Rate** - 5 gallons per minute is recommended as minimum.
- 4. Drain** - Drain appliance to floor drain or washer drain. To prevent back-siphoning, the installer must provide an adequate air gap or a siphon break. See figure 1.
- 5. Electricity** - The transformer supplied is a standard 120 volt, 60 cycle A.C. for USA or 220 volt, 50 cycle A.C. for outside the USA. See figure 8.
- 6. Water Quality** - If water supply contains sulfur, bacteria, iron bacteria, tannins, algae, oil, acid, dirt, sand or other unusual substances, special equipment must be installed prior to the appliance.

Call Our HelpLine

1-800-896-3219

Monday thru Friday 8:00am to 5:00pm EST

Do's And Don'ts

SOME DO'S

1. Do comply with all local plumbing and electrical codes.
2. Do install pressure-reducing valve if inlet pressure exceeds 90 psi.
3. Do install gravity drain on salt storage cabinet. See figure 7.
4. Do secure drain line on appliance and at drain outlet. See figure 3.
5. Do allow a minimum of 8 to 10 feet of pipe from the outlet of the water conditioner to the inlet of the water heater. See figure 1.

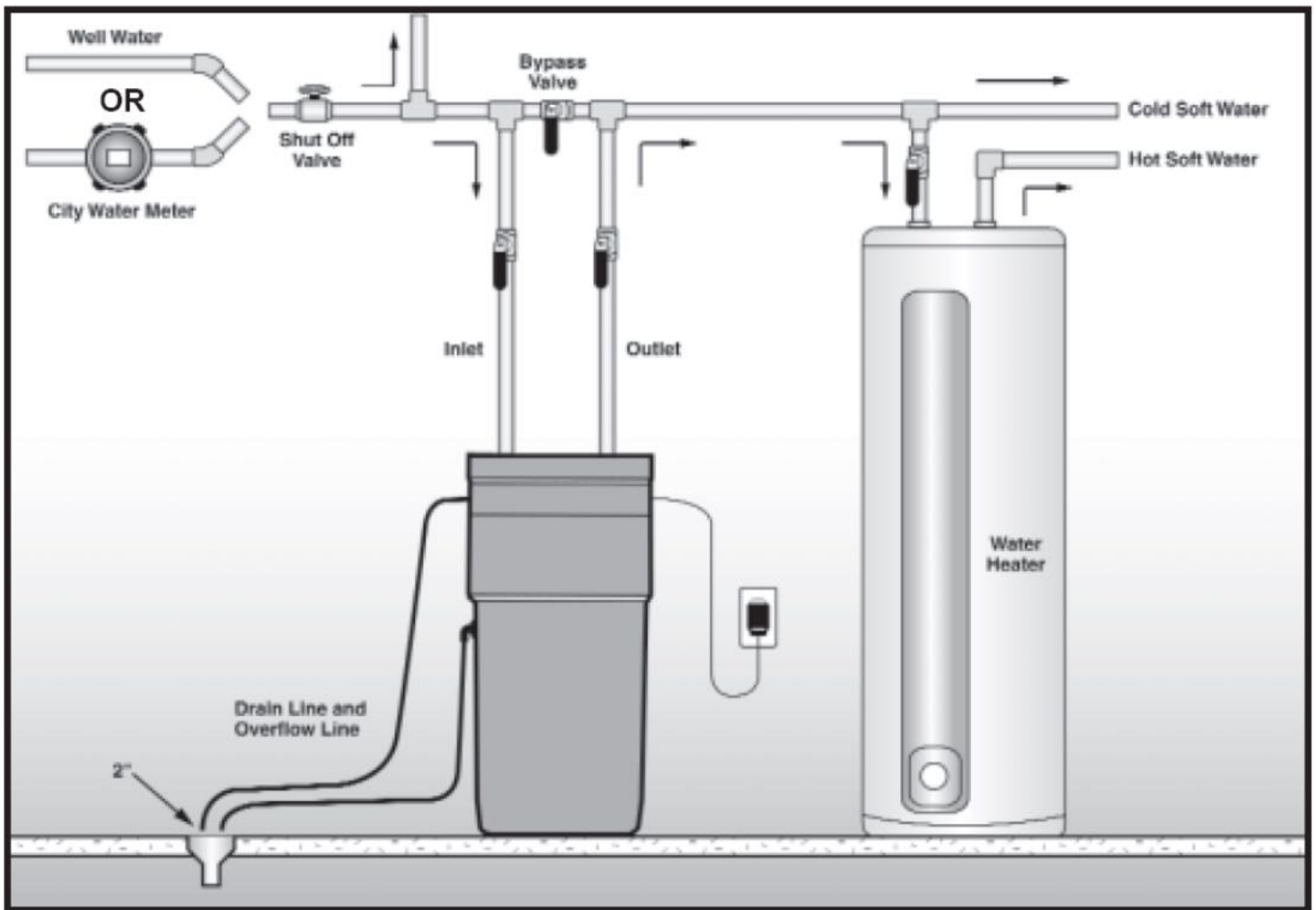
SOME DON'TS

1. Do not install if checklist items are not satisfactory.
2. Do not install if incoming or outlet piping water temperature exceeds 120 degrees Fahrenheit. Please see specifications on page 30.
3. Do not allow soldering torch heat to be transferred to valve components or plastic parts.
4. Do not overtighten plastic fittings.
5. Do not place appliance right up against a wall which would deny access to plumbing. See figure 1.
6. Do not install the appliance backwards. Follow arrows on inlet/outlet. See figure 2.
7. Do not plug the transformer into an outlet that is activated by an on/off switch. See figure 8.
8. Do not connect the drain and the overflow (gravity drain) together. See figure 1.

Reference Illustrations

Installation Guide

Figure 1



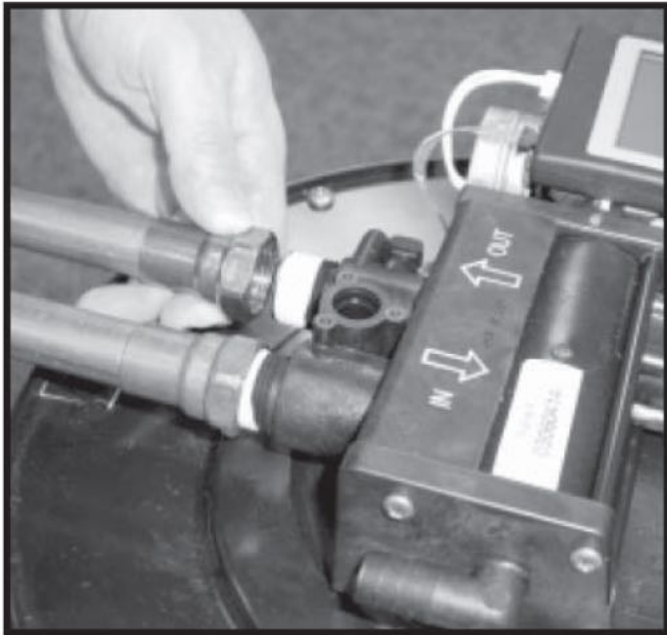
Use this diagram as a location and installation guide for your water conditioner. This diagram applies to basement, slab, crawl space and outside installations.

Bypass Valves. To simplify installation and servicing, a one-piece or a three way bypass valve system is recommended when installing your appliance. A bypass system also provides access to untreated water when required (i.e. for lawn and gardening purposes.) Also, see figures 4 through 6.

Caution: A minimum of 10 feet of 3/4" pipe from the outlet of the water treatment appliance and the inlet to the water heater is recommended.

Reference Illustrations

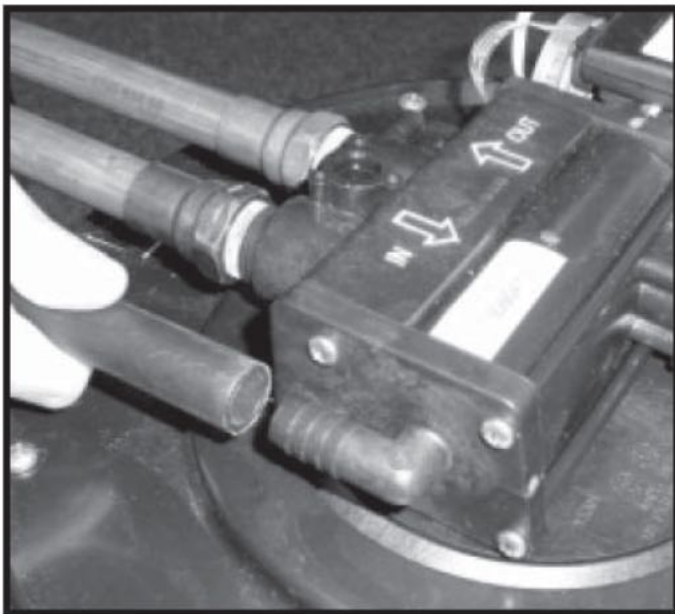
Figure 2



PLUMBING CONNECTIONS

Copper, brass, plastic or other fittings may be used. DO NOT over-tighten fittings.

Figure 3



INSTALLATION TIP

When preparing the male threaded fittings of the I/O adapter, follow the guidelines to avoid damage to the plastic pipe threads.

1. For best results, use 1/2" wide Teflon® tape and wrap the threads three times with each consecutive wrap on top of the previous wrap. To prevent tearing of the the tape, use Teflon® paste on the first two threads only. This lubricates the tape and fills the small void areas that may exist between the threads. When the joint is complete, there will be a small bead of sealant at the fitting interface indicating a properly joined connection.

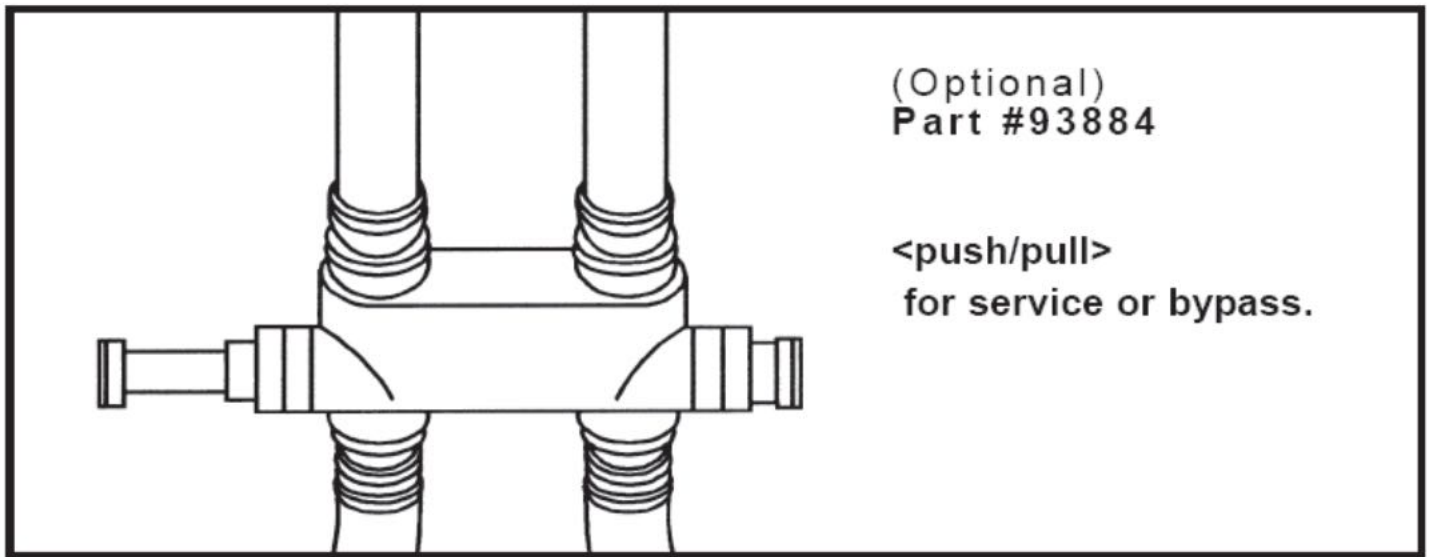
2. When preparing copper fittings, it is always advisable to use a union where there is a threaded connection to facilitate repairing a potential leak in one of your soldered joints.

3. To prevent heat damage to the plastic pipe threads of the adapter, prepare the copper tail assemblies ahead of time so they can cool down before final assembly. The copper tube length should be a minimum of 4-1/2" long. To prevent cross threading, turn the fitting counterclockwise until you feel the threads engage, then tighten. Do not overtighten the fittings.

CAUTION NOTE: To avoid damage, do not allow heat from the torch to be transferred to the plastic valve component.

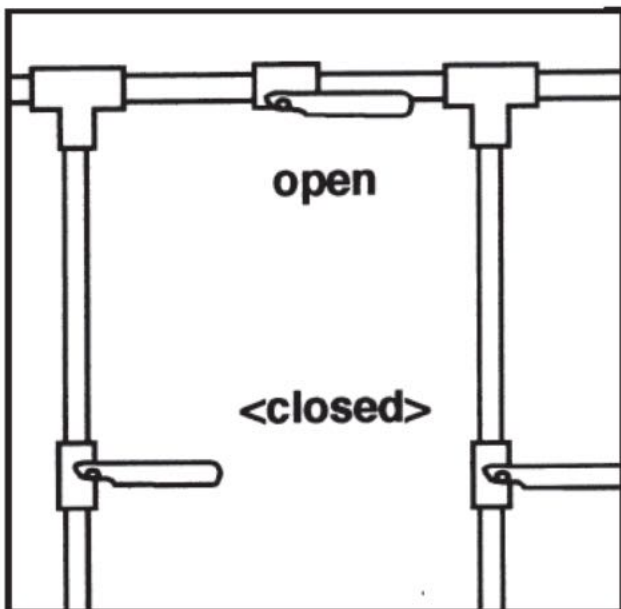
Reference Illustrations

Figure 4



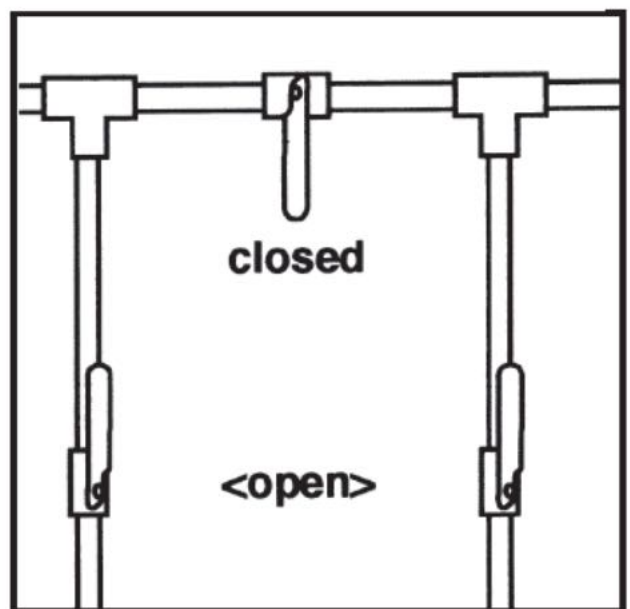
This part may be available through your local Home Improvement store. Or you can order it through Watts Premier (800) 752-5582.

Figure 5



IN BYPASS POSITION

Figure 6



IN SERVICE POSITION

Reference Illustrations

Figure 7



OVERFLOW CONNECTION

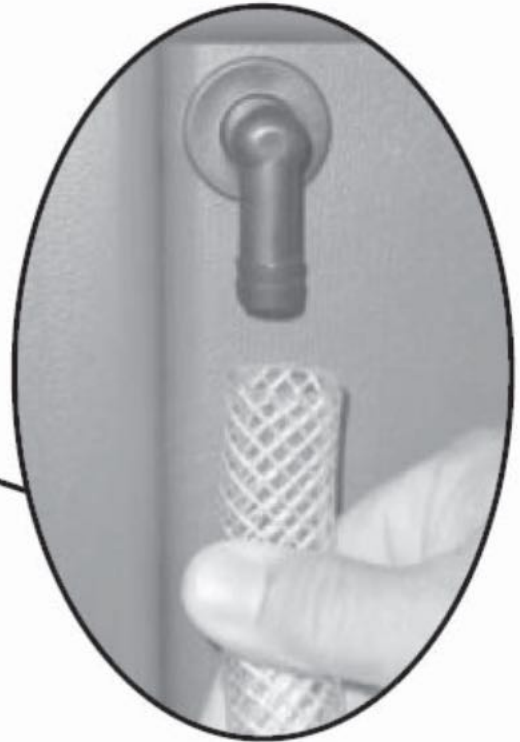
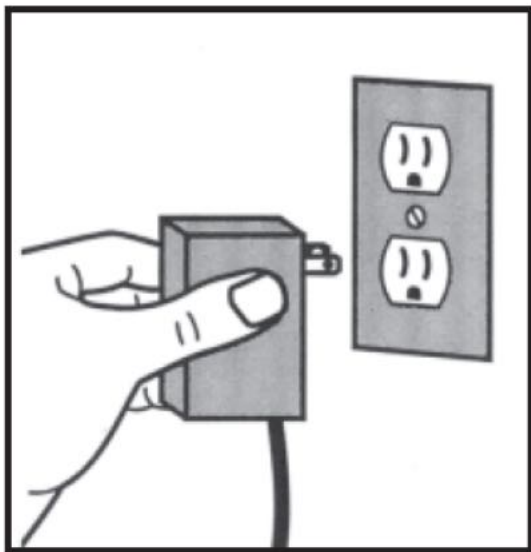


Figure 8



PLUGGING IN TRANSFORMER
Do not plug transformer into an outlet that is controlled by on/off switch.

Figure 9



ADDING SALT TO THE BRINE CABINET

Installation And Start-Up Procedures

Each water conditioner includes 8' of drain line.

1. Placement. Place your appliance in desired location. Turn off electricity and water supply to water heater. Make sure inlet/outlet and drain connections meet the applicable local codes. Check arrows on valve to be sure water flows in proper direction.

See figures 1, 2, & 3. CAUTION: DO NOT PLUMB APPLIANCE IN BACKWARD.

2. Connecting Water Lines. Lift and remove the valve cover. Attach the water lines to the in and out connections. Do not over tighten connections on the plastic threads. Check inlet connection and outlet connection to be certain water flows in the proper direction. (As you face the front of the appliance, the inlet is on the left and the outlet is on the right.) See figure 2

3. Drain Line. The drain line must be a minimum of 1/2" I.D. tubing and should make the shortest run to a suitable drain. The drain line may be elevated up to 8 feet from the discharge on the appliance as long as the water pressure in your system is 40 psi or more. If drain line is 25' or longer, increase drain line to 5/8" I.D. Also, the end of the drain line must be equal in height or lower than the control valve. See figure 1.

4. Flushing. Before placing your appliance in service, it is very important to flush the cold water lines of any debris. Turn on water supply, open the nearest cold water tap and let the water run for 2 to 3 minutes until the water flows clear. Then put the by-pass in the Service position. See figures 4 through 6.

5. Check Leaks. Close faucet and check for leaks. If leaks are found, turn off main water supply and open the nearest cold water faucet to depressurize lines. Close faucet to eliminate siphoning action. Repair leaks. Turn on water supply and electricity to water heater. Place the bypass valve in the Service position. See figure 6.

6. Connect Overflow Line. The overflow line is used to direct excess water to a floor drain if the brine tank fills with too much water, or the appliance malfunctions. The overflow line must end at a drain that is at least 3" lower than the bottom of the overflow fitting. It is a gravity line and cannot be run overhead. See figure 7.

7. Complete The Installation. Open a cold water tap and allow the appliance to flush for 20 minutes or until approximately 72 gallons has passed through the appliance per NSF requirements.

8. Plug In Transformer. See figure 8.

Installation And Start-Up Procedures Cont.

9. Water Testing. The water conditioner, like any other appliance, requires correct installation and setting for optimum performance. To ensure proper settings, you need to obtain an accurate water test. Do this as follows:

For municipally supplied or “City” water, call your water utility company. Ask them the hardness, iron content and pH levels of your water.

For well water, have a sample of your untreated water tested for hardness, iron and pH. To find a facility to test your water sample, check your Yellow Pages under Water Analysis or Water Testing; or contact the company below to conduct a test for you.

WATERSCREEN
National Testing Laboratories, Inc.
1-800-458-3330 - 9 am - 5 pm EST

If you feel you have an abnormal amount of iron, be sure to use salt with an iron-cleaning additive.

10. Adding Water & Salt. Be sure to remove any packaging or installation materials before adding salt. Next, add no more than 3 gallons of water to the brine cabinet. Then add salt to the brine cabinet, wait 2 hours then push the REGENERATE button and hold for 5 seconds. A regeneration cycle will begin and continue for approximately 27 minutes. After the first regeneration, your appliance will automatically refill the correct amount of water in the brine cabinet. See figure 9.

11. Refill Salt when the salt level drops below the water level in the brine cabinet. Always keep salt above water level. See figure 9.

CAUTION! Failure to install, operate and maintain your water treatment appliance as instructed will **VOID** the product limited warranty.

NOTE! Make sure the Owner’s Limited Warranty Card is filled in and mailed within 30 days of installation.

Setting The Controller

DEMAND REGENERATION

You won't have to worry about vacation settings or extra guests because the controller measures water usage and regenerates based on need. The appliance will regenerate using only the necessary amount of water and salt. If power has been turned off, your appliance will retain programmed settings indefinitely.

1) ENTERING YOUR HARDNESS SETTING

See page 9 for determining your setting number. The water hardness setting number shown in the digital readout will increase 1 grain each time you push the "SET" button. After 90 grains, the readout will return to 1, and continue to count up from 1 until the display number matches the hardness number. After 5 seconds the display will change to show "gallons remaining (x 100)". To recheck the hardness, touch "SET."

2) GALLONS REMAINING

After setting water hardness, gallons remaining until the next automatic regeneration is shown in the digital display. NOTE: Gallons remaining are in hundreds. 12=1,200 gallons.

3) RECHARGE/REGENERATION STATUS

Regeneration cycle numbers are shown during regeneration. The read-out will flash with the cycle number. The flashing regeneration numbers are:

First cycle:	(C1) First Backwash
Second & Third cycles:	(C2) Brine/Slow Rinse
Fourth cycle:	(C3) Second Backwash
Fifth cycle:	(C4) Brine Refill
Sixth cycle:	(HO) Service

To quickly advance through the regeneration cycles, press and hold the REGENERATE button for 2 seconds. Wait for the cycle to begin, after 20 seconds press and hold the REGENERATE button until the cycle number changes (about 2 seconds). Each cycle can be advanced in this manner.

4) waterMizer®

The waterMizer® wheel will turn whenever water is being used. See figure 10.

5) REGENERATE

To start an immediate regeneration, press The "REGENERATE" button and hold for 3 seconds. The REGENERATE button is used when starting your water conditioner, to start an immediate regeneration, or to restore capacity if you have run out of salt. If your appliance has run out of salt, you may not have soft water available. Remove the salt lid and add salt. Wait two hours, then press the "REGENERATE" button and hold for 3 seconds. See figure 10.

Setting The Controller - Continued

6) POWERCLEAN™

The powerClean™ feature is a service/maintenance step for water supplies that have an excessive amount of iron. Activating this feature is a simple push of the powerClean™ button on the controller. PowerClean™ will appear in the display when this feature is activated. The appliance will regenerate every other day with five pounds of salt. Leave the powerClean™ feature on for a minimum of two weeks. The frequent regeneration will eliminate iron buildup in the resin bed. The use of salt with an iron cleaning agent or iron out cleaner is recommended for continuous use as a preventive measure against iron fouling of the resin bed. To deactivate this feature, simply press the powerClean™ button. Use this feature every six months as a part of your routine maintenance procedure to ensure a long service life for your water treatment appliance. See figure 10.

HARDNESS SETTINGS

1. Hold down "SET" for 3 seconds to enter basic customer settings mode.
2. "Set Hardness" and a default hardness number is now displayed. Pressing and releasing the "CHANGE" button will increase the hardness setting # by one. As a short cut, pressing and releasing the powerClean™ button will advance the display by 10. However, the CHANGE button alone can be used to advance the display one digit at a time to the correct number. If "Gallons x 100" was selected, 01 = 100 gallons. If "Liters x 1000" was selected, 01 = 1,000 liters. Pressing and releasing "SET" will save the hardness number and put the appliance into operation. The appliance is now ready for use as recommended. To fine-tune the programming further...

ADVANCED CUSTOMER SETTINGS:

Your appliance can be programmed for High Capacity (HC) or High Efficiency (HE). High Capacity means the appliance will regenerate less often, but use more salt. High Efficiency will make the appliance regenerate more often and use less salt. See Specifications, pg. 30.

1. Hold down "SET" and "CHANGE" for 3 seconds to enter advanced customer settings mode. While SET and CHANGE are being held down, the display should show only the controller type. After the 3 seconds, the entire screen is lit for a half second, and then "HC" will appear.
2. Pressing and releasing the CHANGE button will toggle the digit display between "HC" and "HE". Pressing and releasing the SET button will advance programming to the next step. Default is "HC".
3. The controller will now display "Demand Mode." Each press of the CHANGE button will switch between "Demand Mode" and "Delayed Mode".

Delayed Mode allows regeneration at a specific time (e.g. at 2am when less water is being used.) Demand Mode triggers a regeneration as soon as softening capacity is exhausted.

Pressing and releasing the SET button will advance programming to the next step. Default is "Demand Mode".

Setting The Controller - Continued

4. "96 Hours" is now displayed. Pressing and releasing the CHANGE button will toggle this on and off.

If "96 Hours" is selected, the appliance will work no more than 4 days without a regeneration. The "96 Hours" selection is required in Europe. Note: If there is iron in your water, select this option.

Pressing and releasing the SET button will advance programming to the next step. Default is for "96 Hours" to be ON.

5. "Gallons X100" is now displayed. Pressing and releasing the CHANGE button will toggle between "Gallons X100" and "Liters X1000". Choosing gallons sets the controller to English units, and choosing liters sets it to metric units. Pressing and releasing the SET button will advance programming to the next step.

6. If "Gallons" was chosen, "12" is now displayed. If "Liters" was chosen, "24" is displayed. Pressing and releasing the CHANGE button will toggle between "24" and "12". This controls the selection of a 12-hour (AM/PM) or 24-hour clock. If 24-hour, 00=midnight. Default is "12".

7. "Set Time" and "12" is now lit. To set the time, press and hold the CHANGE button to advance the numerical display, and switch from "PM" to "AM" if appropriate. Note: set the time to the nearest hour. Pressing and releasing the SET button will save the time displayed and advance to the next menu. Pressing and releasing the SET button will advance programming to the next step. Default is 12 PM.

8. "Set Reg. Time" and "02" is now displayed. To set the regeneration time, press and release the CHANGE button to advance the numerical display. Pressing and releasing the SET button will save the "regen. time" displayed and put the unit into operation. Default is 2 AM.

PROGRAMMING IS NOW COMPLETE

4 Button Error Descriptions

"E1" Error message: If "E1" appears on the controller screen along with an audible beeping sound, the controller cannot find the home magnet disk position. Make sure the controller is firmly seated on all four "tabs" of the drive end cap. (See page 14). Note: if all is in place, and the motor and magnet disk do not turn, it could indicate an obstruction in the valve body.

"E2" Error message: If "E2" appears on the controller screen along with an audible beeping sound, the motor is disconnected. Plug in the motor. Wait 30 seconds or unplug/replug the transformer into the controller to re-set.

"E3" Error message: Home offset error. Disk didn't start in proper home location. Controller will automatically try to reset itself by finding Home and continuing the regeneration.

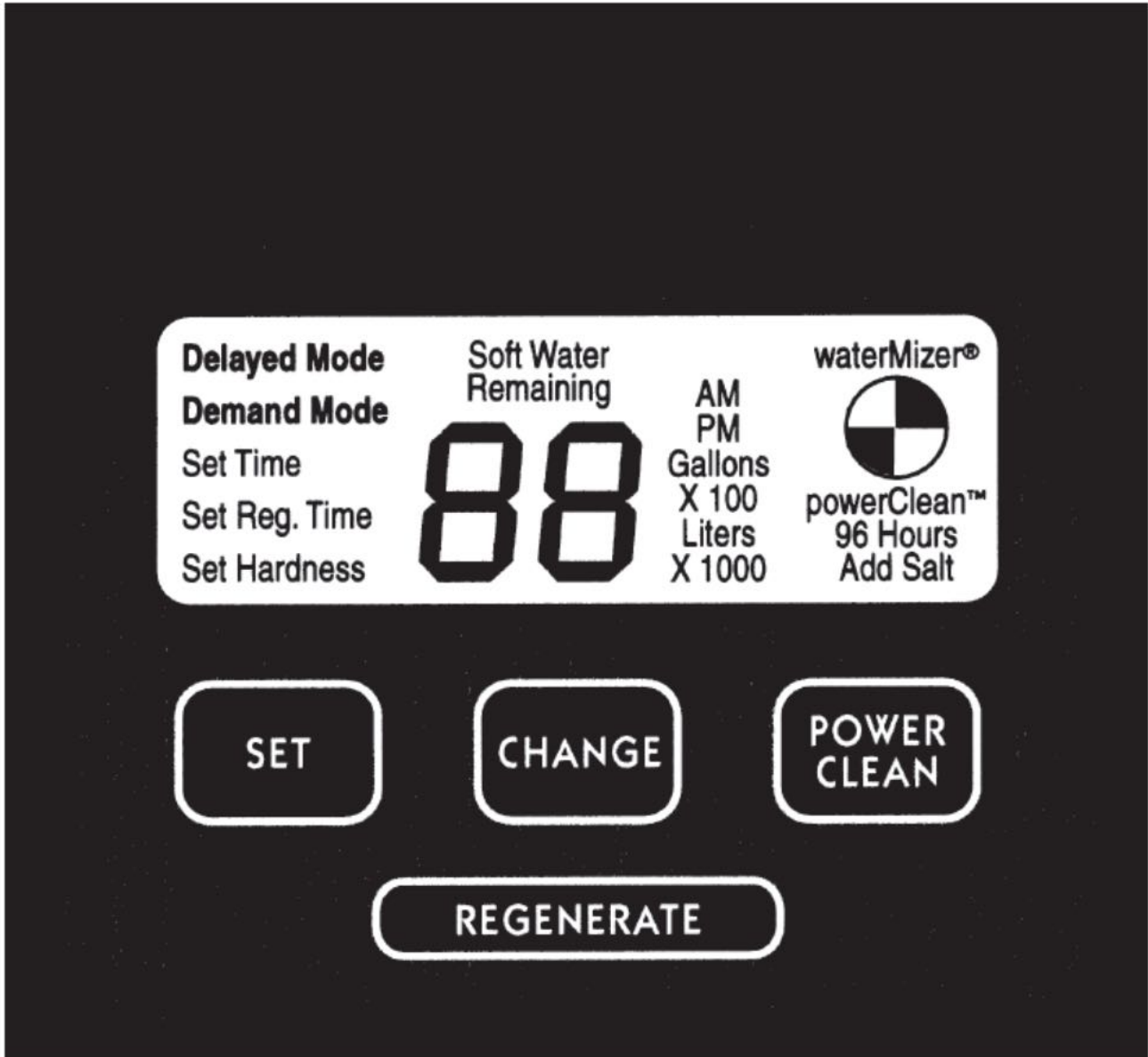
"E4" Error message: Magnet stuck at home. Gear teeth aren't engaged, gear stripped, something is jammed in the valve. Cycle the power to reset.

"E5" Error message: Memory error. Replace board.

Setting The Controller - Continued

Controller Layout

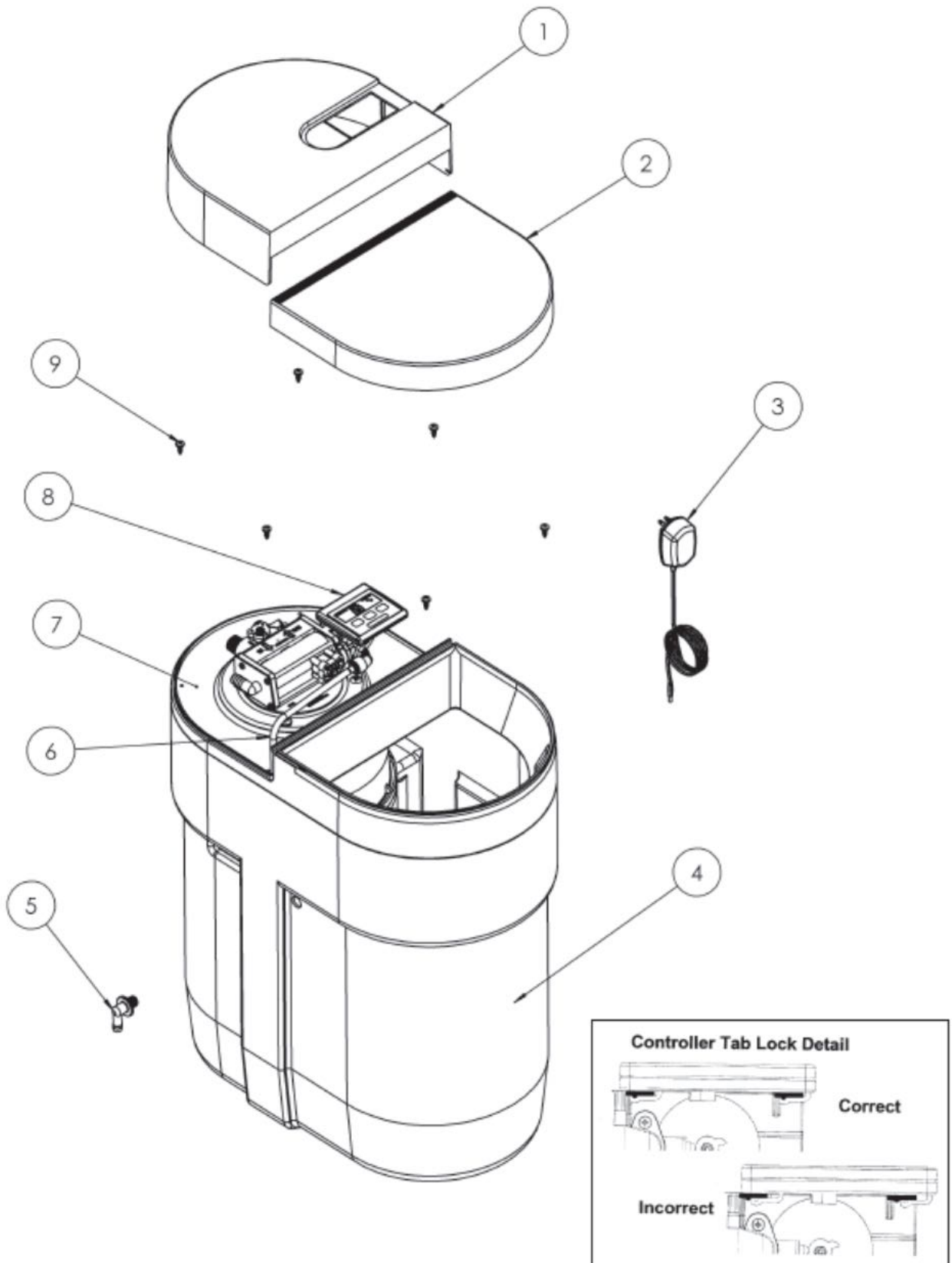
Figure 10



Parts Diagrams

ELECTRONICS AND CABINET

Figure 11



Parts Diagrams

ELECTRONICS AND CABINET

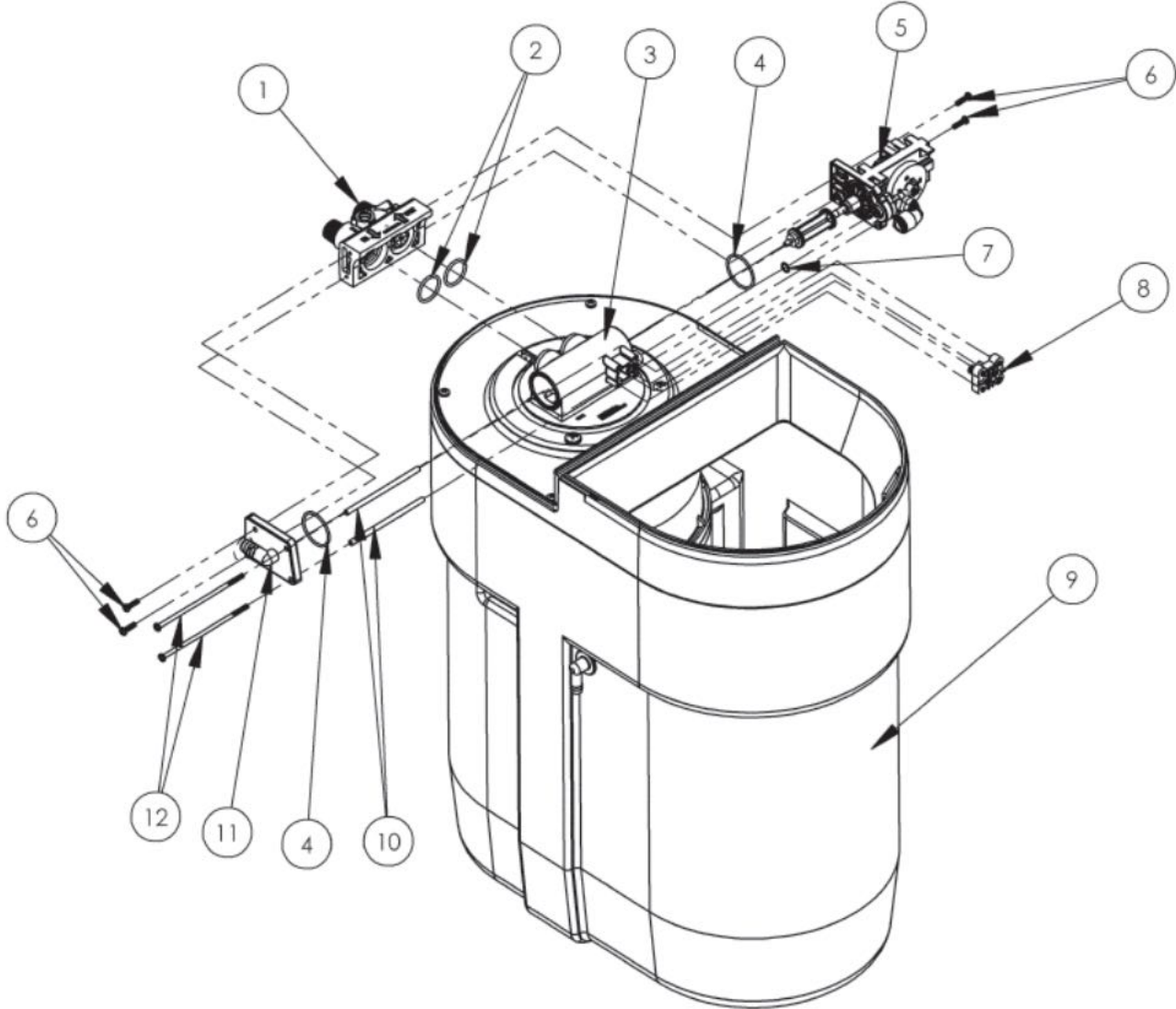
Figure 11

Figure#	Part#	Item	Qty.
1	95204	Valve Cover Assembly	1
2	95205	Salt Port Cover	1
3	93245	12 Volt Transformer/Power Cord	1
4	95202	Cabinet	1
5	C0700	2 Piece Overflow	1
6	93848	Brine Tubing, 3/8"	18"
7	95203	Support Panel	1
8	54538	Computer Control	1
9	90801	Screw, Support Panel	6

Parts Diagrams

Cabinet and Assemblies

Figure 12



Parts Diagrams

Cabinet and Assemblies

Figure 12

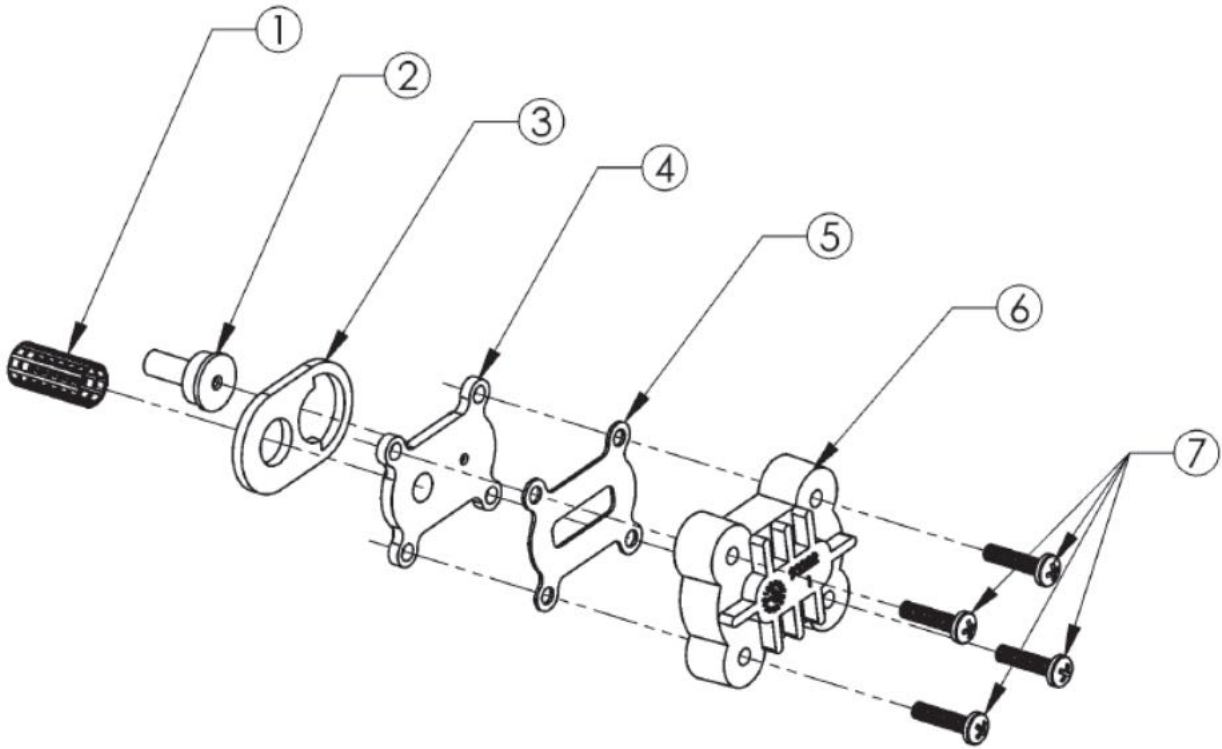
Figure#	Part#	Item	Qty.
1	54510	3/4" I/O Adapter Assembly	1
2	93838	3/4" I/O Adapter O-Ring	2
3	95505	Resin Tank Assembly (empty)	1
4	93808	End Cap O-Ring	2
5	95301T	Drive End Cap Assembly w/o motor/magnet disc	1
6	93870	Screw	4
7	90828	O-Ring, Small, End Cap	1
8	93501	Injector Assembly	1
9	95202	Cabinet	1
10	93835	Sleeve	2
11	93524	Drain End Cap Assembly 1/2" Barbed	1
12	9389	Screw, Long	2

Parts Diagrams

Injector Assembly

Figure 13

Part Number 93501



Note:

When working on the injector assembly, make sure part #3 aligns properly with the outline marked on part #4.

Parts Diagrams

Injector Assembly

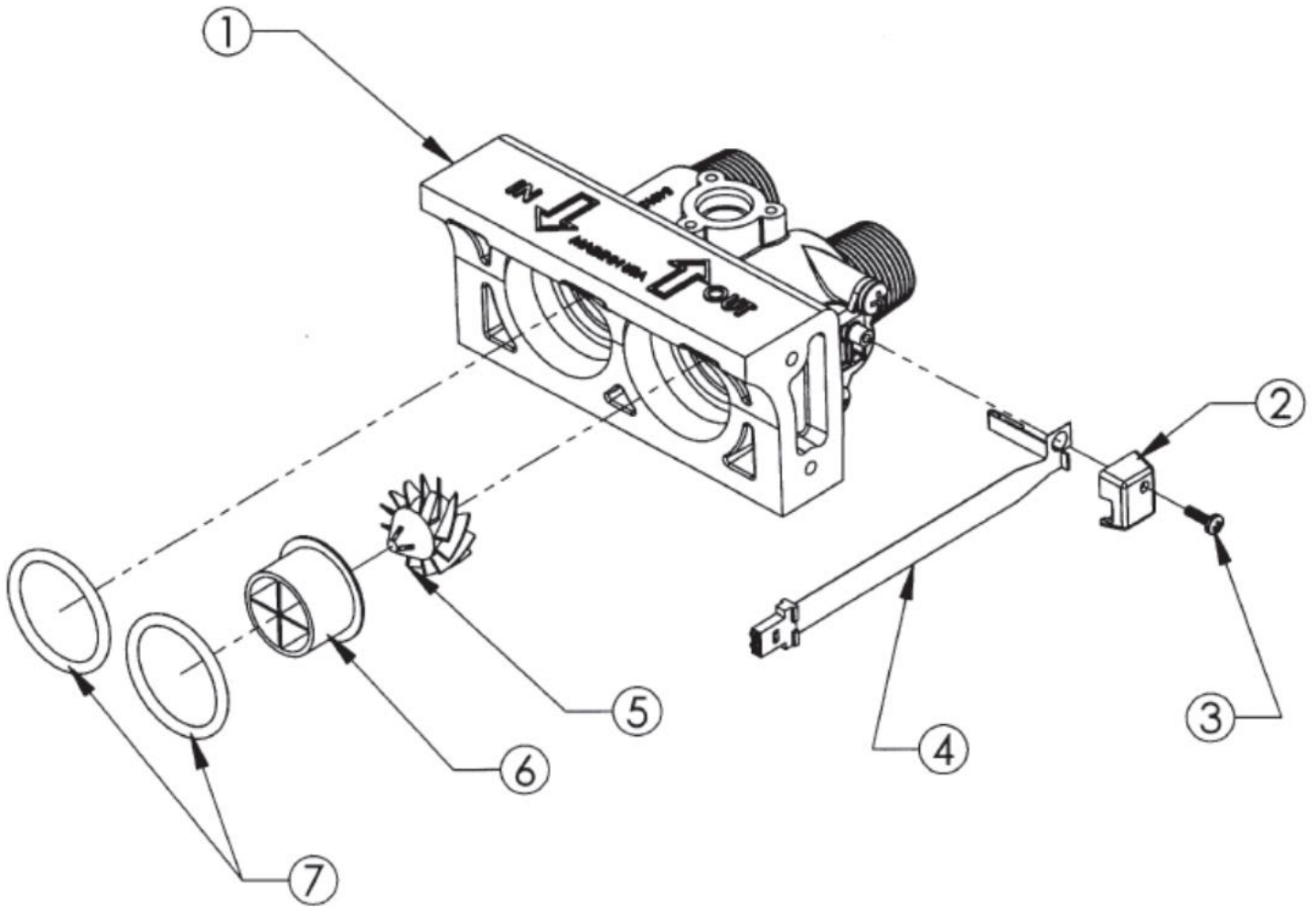
Figure 13

Figure#	Part#	Item	Qty.	Description
1	93810	Injector Screen	1	Acts as a pre-filter to keep debris from entering the Injector Nozzle and Injector Throat. Attaches to the cylinder on the Nozzle plate and spherical "bump" inside the Main Valve Body. Some compression of the Screen may occur during assembly. The openings in the screen must be clear to ensure proper flow to the Injector assembly.
2	93223	Injector Throat	1	Creates the vacuum that draws the brine solution from the brine cabinet in conjunction with the Injector Nozzle (Part # 93221.) The center hole should be clear of debris, round and undamaged. The Injector Throat should be pressed flush into the opening in the valve. If the Throat needs to be removed, it should be replaced with a new one.
3	93220	Bottom (Thick) Injector Seal	1	Seals between the Injector Nozzle and the Main Valve Body. The gasket has a definite hole pattern that has to match-up with the Nozzle and Main Valve Body opening. The gasket seals at its outer edges and between the inlet screen and nozzle opening. These areas must be free of defects such as tears or pits and be free of debris.
4	93221	Injector Nozzle	1	Creates the vacuum that draws the brine solution from the Brine Cabinet in conjunction with the Throat (part #93223). There are two openings in the Injector Nozzle plate. The small hole, flush on both sides, is the one that creates the "injection-stream" that enters the Injector Throat. It is very important that this hole be clear of debris, round and undamaged. If this hole becomes "clogged," do not use anything to clear this opening that could damage it, such as metal objects. Use a clean cloth and flush with water. If necessary, a wooden toothpick may be used. When assembling to the Main Valve Body, the Injector Nozzle hole should line up with the Injector Throat.
5	93232	Top (Thin) Injector Seal	1	Seals between the Injector Nozzle and the Injector Cap. The gasket must be free of defects such as tears or cuts and be free of debris.
6	93222	Injector Cap	1	Holds the Injector assembly together and seals the assembly to the Main Valve Body.
7	90807	Injector Screw	4	These four machine screws should be tightened evenly and snugly.

Parts Diagrams

I/O Adapter Assembly

Figure 14



Parts Diagrams

I/O Adapter Assembly

Figure 14

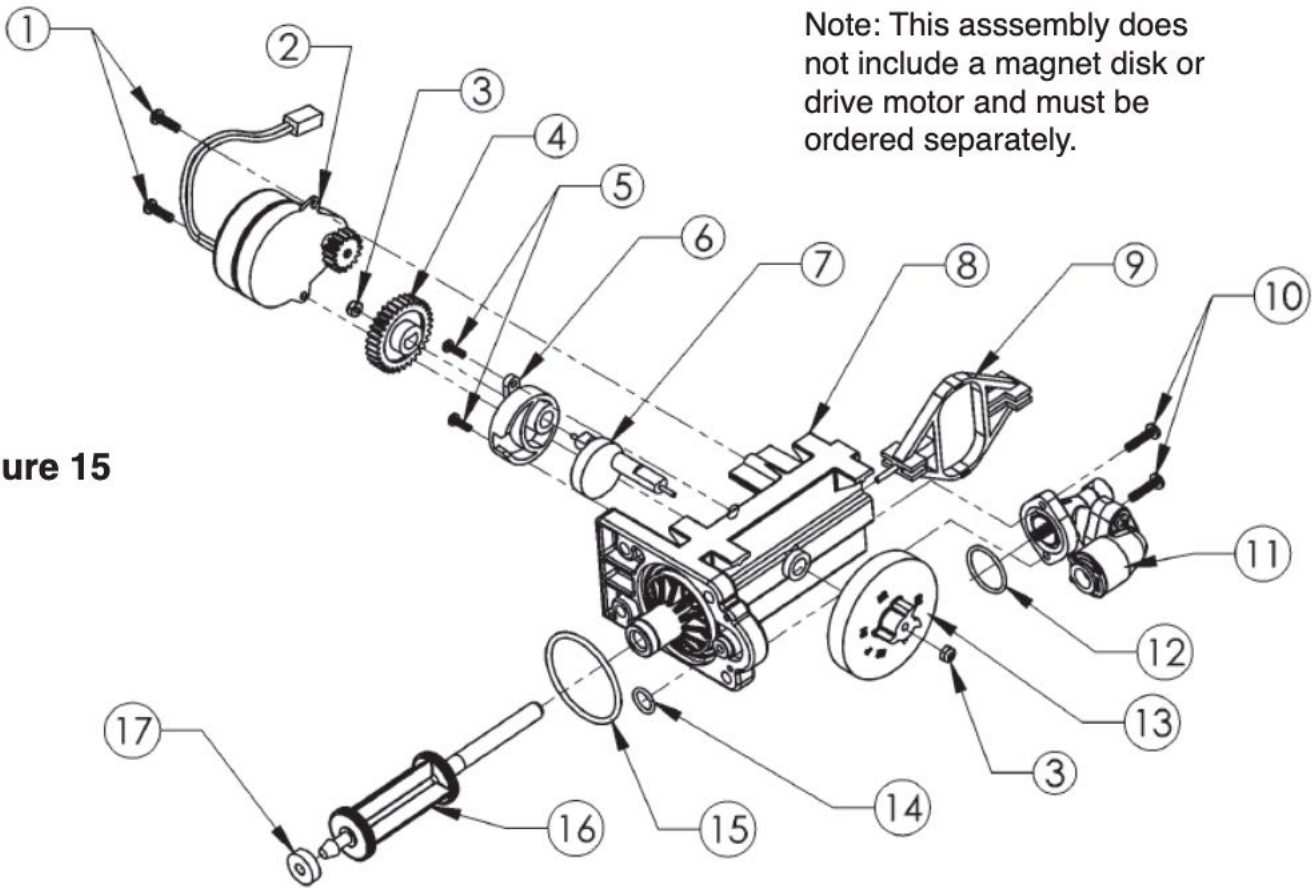
Figure#	Part#	Item	Qty.	Description
1	54510	3/4" I/O Assembly	1	Makes the connection between the plumbing and Main Valve Body. Also, contains the "Hard Water" Blending Valve. The seal areas of the O-rings at the Main Valve Body inlet and outlet must be smooth and free of defects and debris, and be lubricated with silicon grease before assembly. When attaching to the Main Valve Body, put the O-rings on the male bosses on the Main Valve Body and push the Adapter into place. A "snap" can be heard when the ADAPTER slides into place; if not, the O-rings may be "pinched." If O-rings are pinched, replace with new ones. The I/O Adapter comes pre-assembled with the sensor housing and turbine axle. These are not field serviceable and if damaged, must be replaced with a new assembly.
2	90232	Sensor Cap	1	The Sensor Cap should be snapped in place.
3	90809	Screw, Sensor Cap	1	
4	93858	Turbine Sensor Assembly	1	Picks up the magnetic field from the Turbine and relays it to the Controller. The three wire assembly connecting the "black-wafer" Hall-Effect Sensor or the Controller board must not be severely bent (folded over), cut, or broken. Care should be taken when putting the Sensor into the Sensor Housing. The "spring" flap below the Sensor must be gently bent over (on top of) the Sensor, and then the Sensor slide all the way into the Sensor Housing. The round hole of the Sensor mounting tab is then placed down over the mounting screw boss. The cap is then put in place and the mounting screw is installed. A slot is provided in the cap for the wire way to exit. The three-wire socket connector must be properly installed in the controller. Stops on the connector prevent improper (upside down) assembly. Do not force the connector past the stops.
5	90522	Turbine Assembly	1	The Turbine must have a 1/8" diameter Rare Earth magnet pressed into place adjacent to the axle opening. When assembled to the axle, the Turbine should spin freely. Do not use any lubricants. If the Turbine should become "jammed," clean and flush the Turbine and I/O assembly.
6	93229	Flow Director	1	
7	93838	O-Ring	2	

Parts Diagrams

Part Number 95301T

Note: This assembly does not include a magnet disk or drive motor and must be ordered separately.

Figure 15



Figure#	Part#	Item	Qty.	Description
1	90802	Screw		Secures motor to endcap assembly.
2	90217	Drive Motor - 12V		The Drive Motor is held in place by two 1/2" screws. The screws should be "snug." The brass pinion gear on the Motor should engage the Control Drive Gear. The wires should be securely fastened to the Control.
3	93891	1/4" Hex Nut		Secures drive gear and magnet disc to end cap assembly.
4	93238	Drive Gear		The Drive Gear is assembled to the Piston Slide Cam by means of a "keyed" opening which transfers the "torque" generated by the Drive Motor to the rest of the drive system. If the drive system becomes jammed, this opening can become "rounded" causing the gear to turn, but not the Piston Slide Cam. If this occurs, clear the jam and replace the Drive Gear and Piston Slide Cam (Part No. 93217).
5	90809	Screw		
6	93219	Piston Slide Cam Cover		The cover secures the Piston Slide Cam (93217) in place and acts as a bushing for the Cam Shaft.
7	93217	Piston Slide Cam		This is the "heart" of the drive system. There is a threaded stainless steel shaft that runs through the main drive axle. The Drive Gear is attached at the short end and the Magnet Disc at the other end. The Piston Slide Cam is assembled inside of the Piston Slide (93216). This Cam Shaft should turn freely before the Motor is assembled.

Parts Diagrams

Brine Valve Housing Assembly

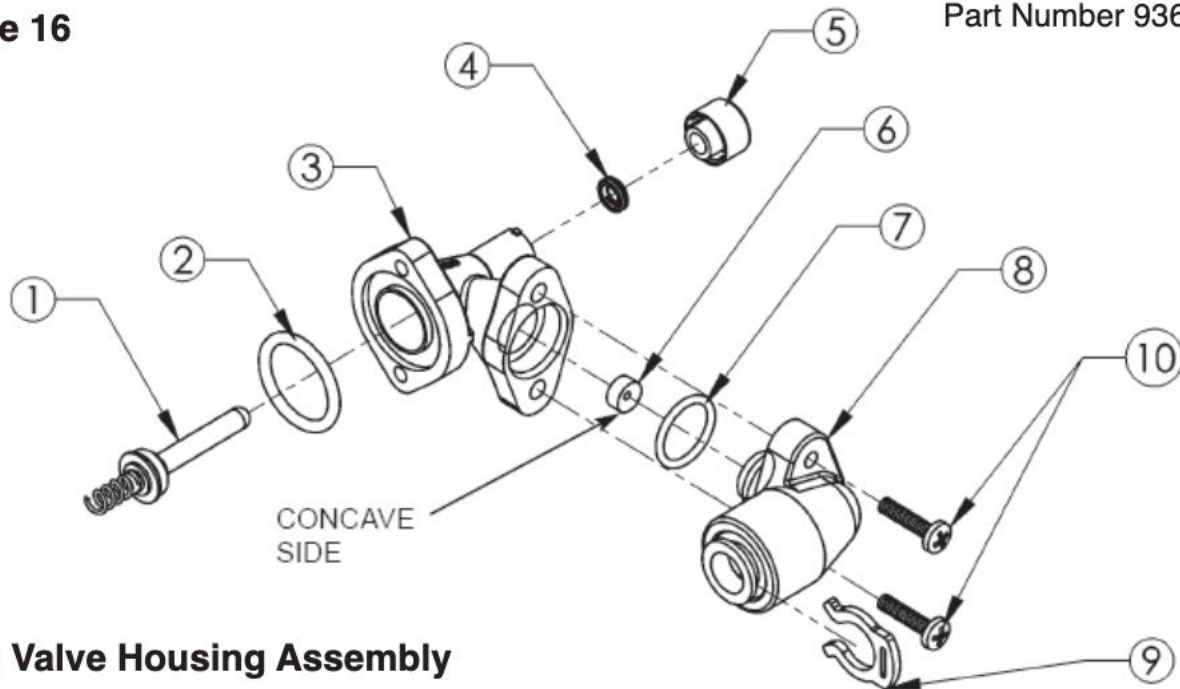
Figure 15

Figure#	Part#	Item	Qty.	Description
8	93583	Drive End Cap	1	Seals the two openings on the Main Valve Body. The larger diameter opening is sealed with an O-ring used as an axial or "face" seal. The O-ring sits in a groove in the End Cap. This groove must be free of defects such as pits or scratches and also free of debris. The smaller diameter seal is accomplished with an O-ring used as a radial seal. The O-ring should be placed on the male boss on the End Cap. When assembling the Drain End Cap to the Main Valve Body, care should be taken to make sure the small O-ring is aligned with the opening in the Main Valve Body and that the large O-ring stays in the groove in the Drive End Cap. If misaligned, the O-rings can become pinched and leak.
9	93216	Piston Slide	1	The Piston Slide should move freely inside the Drive End Cap Housing. The stainless steel threaded stud should be pointing toward the Main Valve Body.
10	90818	Screw	2	Secures brine valve to drive endcap assembly.
11	93601-JG	Brine Valve Housing Assembly	1	Attaches to the Drive End Cap with two 3/4" thread cutting screws and has one O-ring seal. When assembling, the O-ring should be placed on the Drive End Cap boss and be lubricated with silicone grease. A twisting action should be applied along with pressure until the O-ring seats. (See Brine Valve Assembly sheet for more details.)
12	90821	O-Ring	1	Seals the brine valve to the drive endcap.
13	54502	Magnet Disk Assembly	1	The Magnetic Disc is assembled to the Piston Slide Cam by means of a "keyed" opening to ensure proper orientation. The magnet in the Magnetic Disc should be flush with the disc surface.
14	90828	O-Ring	1	Seals large opening between valve body and drive endcap.
15	93808	O-Ring	1	Seals small opening between valve body and drive endcap.
16	93522-A	Piston Assembly	1	The Piston should be screwed onto the Piston Slide Cam until it "bottoms out," but care should be taken not to overtighten. Overtightening can cause the Piston to break. The white Teflon Hydro-slide O-Ring covers should be free of defects such as indentations and cuts. The Drain Gasket should slide - there will be some friction - without binding on the Piston shaft. When assembling, care should be taken to insert the Piston into the Main Valve Body without excessive side-to-side or up/down motion.
17	93839	Drain Gasket	1	Seals the drain end cap when valve is in service position to prevent water flow to drain.

Parts Diagrams

Figure 16

Part Number 93601



Brine Valve Housing Assembly

Figure#	Part#	Item	Qty.	Description
1	93620	Piston Assembly	1	The Piston should have a gasket on the shaft side of the flange and a spring pressed onto a boss on the other side. The gasket should be free of defects such as cuts or debris. The Piston is Teflon coated and should be free of scratches. The Piston should move freely in the housing; silicone lubrication is recommended on the Piston shaft.
2	90821	O-Ring	1	Seals the brine valve to the drive endcap.
3	93260	Housing	1	Should have a Quad-ring for the Piston seal. The Quad-ring (4) is held in place by the brine valve retainer (5). The brine valve housing has four retaining lugs that secure the brine valve retainer. Just inside the entrance hole for the Brine Piston (1) is a concave seat area that must be free of defects such as nicks, indentations or debris. If any defects are detected by visual inspection, repair or replace as needed. To replace the Quad-ring, it will be necessary to remove the brine valve housing assembly from the drive end cap (after by-passing and depressurizing the conditioning appliance). Push the piston assembly (1) out of the housing. To remove the brine valve retainer (5) push in and turn "clockwise" to unlock the retainer. CAUTION! Do not attempt to remove the retainer with the piston assembly in place. This will damage the housing and/or the retainer. Push the piston back into the housing to dislodge the old Quad-ring (4) and discard it. Remove the piston, insert the new Quad-ring and lock the retainer onto the housing by pushing in and turning "counterclockwise" to secure the Quad-ring. Replace the piston assembly and attach the brine valve assembly to the drive end cap and restore service to the conditioning appliance.
4	93878	Quad Ring	1	Seals piston and housing assembly.
5	93254	Quad Ring Retainer	1	Holds quad ring in place.
6	908843	.5 gpm Flow Control	1	The Flow Control has two distinct and different sides. One is "flat;" the other is "concave." The button should be centered in the housing opening with the concave side facing the Housing Cap.
7	93805	O-Ring	1	Seals the housing cap to the housing.
8	93243	Housing Cap Assembly	1	Held in place by two 5/8" machine screws that engage the Housing flange. An O-ring seals the Housing Cap and Housing. Place the O-ring into the housing opening, lubricate with silicone grease and then use a twisting action to insert the Housing Cap.
9	200199	Clip	1	Locking Clip.
10	90818	Screw	2	Secures housing cap to housing.

Parts Diagrams

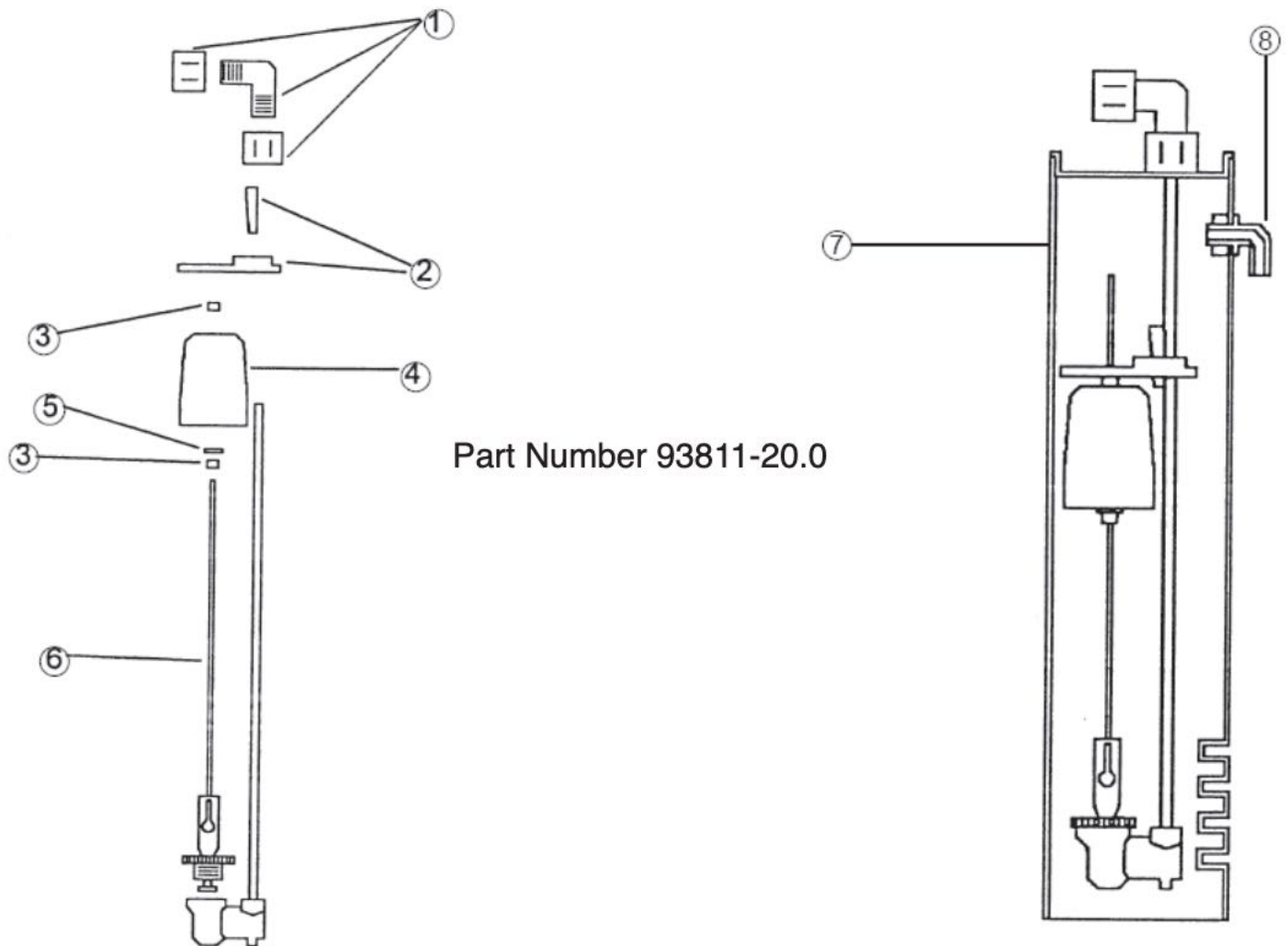


Figure 17

Safety Shutoff Assembly

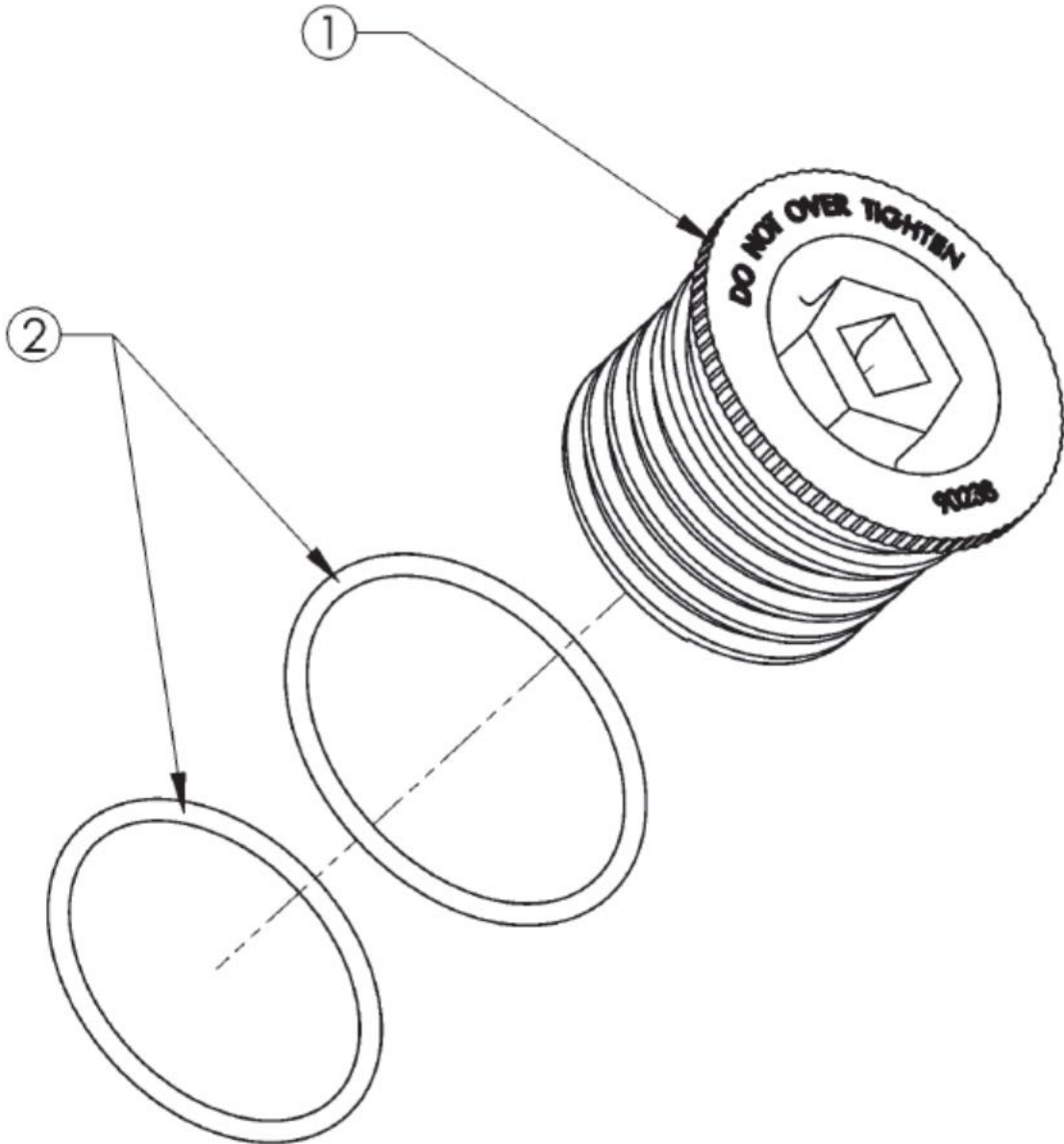
Figure#	Part#	Item	Qty.	Description
1	51366	Air Check Elbow Assembly	1	Make sure compression nuts are tight.
2	H7041	Guide and Lock Set	1	Should not be loose.
3	H7039	Float Grommet	2	Should keep float from moving up or down.
4	H7040	Bell Float	1	
5	H7042	Float Washer	1	
6	H7038	Float Rod	1	
7	93811-20.0	Air Check / Brine Well Assembly	1	
8	CO700	2-Piece Overflow	1	

Notes

(this page left blank intentionally)

Parts Diagrams

Figure 18
Fill Plug Assembly, Tank Bottom



ITEM NO.	QTY.	PART NO.	DESCRIPTION
1	1	90238	Fill Plug
2	2	90819	O-Ring

Troubleshooting

Problem	Cause	Solution
No soft water after regeneration.	No salt in brine cabinet.	Add salt (refer to “Regenerate” Page 10).
	Sediment in brine tank has plugged the brine line and air check (page 25).	Remove air check draw tube and flush with clean water. Clean injector assembly. Clean any sediment from brine cabinet.
	Drain line is pinched, frozen or restricted.	Straighten, thaw or unclog the drain line.
	Clogged injector assembly (page 18, 19).	Remove injector cap and clean nozzle and throat with a wooden toothpick. Replace throat if removed.
	Salt bridge has formed.	High humidity or the wrong kind of salt can create a salt bridge. This is a crust that forms an empty space between the water and salt. To test, use a blunt object like a broom handle. Push the handle into the salt to dislodge the salt bridge.
No soft water.	The plumbing bypass valve is in the the bypass position (page 6).	Place bypass valve in the service position.
	Appliance is plumbed back-wards.	Check that appliance is plumbed correctly.
	Water hardness has increased.	Reset water hardness.
	Not metering water.	Flow should be indicated with water usage. If no flow, see below.
No flow is indicated when water is flowing.	The plumbing bypass valve is in the the bypass position (page 6).	Place bypass valve in the service position.
	Appliance is plumbed back-wards.	Check that appliance is plumbed correctly.
	Sensor not receiving signal from magnet on turbine (page 20, 21).	Remove sensor from IO housing. Test by placing magnet on the sensor chip. If waterMizer® blinks, replace turbine. If not, replace sensor.
Flow is indicated when water is not being used.	There is a leak in your household plumbing system.	Repair the leak.

Troubleshooting

Problem	Cause	Solution
No read-out in display.	Electric cord is unplugged.	Plug in transformer.
	No electric power at outlet.	Check power source. Make sure outlet is not controlled by a switch.
	Defective transformer (fig. 8).	Test with volt meter for 12 VAC at control. If 0 VAC, replace transformer.
	Defective circuit board (fig. 10).	With 12 VAC present at controller, replace circuit board.

Appliance stays in regeneration. Cycle numbers remain flashing.	Computer control not attached properly.	Make sure computer control is pushed all the way onto drive end cap.
	Foreign object in valve body.	Remove foreign objects from valve body.
	Broken valve assembly. Motor running Magnet disc not turning (pages 22,23)	Replace drive end cap.

Excess water in brine tank.	Restricted, frozen or pinched drain line.	Remove restriction, thaw or straighten drain line.
Should be approximately 8 - 10" with salt.	Plugged brine line, brine line flow control or air check (pages 24, 25).	Clean flow control, air check and brine line. Clean any sediment from brine cabinet.
	Plugged injector assembly (pages 18, 19).	Replace drive end cap.
	Sticking brine refill valve.	Remove valve. Lubricate piston with silicone grease and reassemble.

Not regenerating in proper sequence.	Magnet disc defective.	Replace magnet disc.
	Defective position sensor.	Replace control.

Salty water.	Plugged Injector.	Clean injector screen, nozzle and throat.
	Low water pressure.	Maintain min. pressure of 20 psi.
	Drain line or flow control restricted.	Remove restrictions.
	Brine line restricted or crimped.	Remove restrictions, replace if crimped.
	Excessive amount of water in brine cabinet.	Verify correct water level relative to salt setting. Check lines for loose connections.
	Intermittent pressure drop from feed source.	Verify adequate pressure and volume of water supply.

Softener Specifications

Maximum compensated hardness (grains)	90
Maximum ferrous iron reduction	10 ppm
Minimum pH	7
Media type and amounts	Power Clean Filter Media Super Fine Mesh Resin 1 cu.ft.
Salt usage (lbs.) / Capacity (HC - High Capacity)	10 / 30,000
Salt usage (lbs.) / Capacity (HE - High Efficiency)	5 / 21,200
Maximum water temperature	120°F
Mineral tank size	10.5 X 21"
Peak flow rate / psi drop	10 gpm/14.5
Pressure drop @ service flow rate of 4 gpm	4.0 psi
Maximum flow rate to drain during regeneration (gpm)	2.0
Water Pressure (minimum-maximum psi)	20 / 120
Controller type	4 Button
Regeneration time (minutes) (HC - High Capacity)	50
Regeneration time (minutes) (HE - High Efficiency)	27
Water used/regeneration (gallons) (HC - High Capacity)	35
Water used/regeneration (gallons) (HE - High Efficiency)	21
Frequency of regeneration (days)	Demand
Salt Storage	170 lbs.
Height (in.)	30.5"
Footprint (in.)	15" X 26"
Electrical Rating	12VAC, 1 phase 60 Hz
Plumbing Connections	3/4 - 1" MNPT
Shipping Weight - Approximate (lbs.)	105 lbs



Limited Warranty

Warranty Information

To place this appliance under limited warranty, the limited warranty registration card must be completed and returned within 30 days of installation.

Coverage - This limited warranty covers the appliance delivered to the original owner when the system is purchased for personal, family, or household use. It is intended to cover defects occurring in workmanship or material or both.

Warrantor's Performance and Length of Limited warranty - warrants that upon receipt from the original owner of any mechanical or electronic part which is found to be defective in material or workmanship, warrantor will repair or replace the defective item for 3 years from date of installation.

Warrantor further warrants that upon receipt from the original owner of any media tank/valve body, brine cabinet, found to be defective in material or workmanship, warrantor will repair or replace the defective item for 10 years from date of original installation.

There are no warranties other than those described in this limited warranty instrument.

This limited warranty does not cover any service call or labor costs incurred with respect to the removal and replacement of any defective part or parts.

Warrantor will not be liable for, nor will it pay service call or labor charges incurred or expended with respect to this limited warranty.

In the event the water supply being processed through this product contains bacterial iron, algae, sulphur, tannins, organic matter, or other unusual substances, then, unless the softener is represented as being capable of treating these substances in the softener specifications, other additional treatment of the water supply must be used to remove these substances before they enter this product. Otherwise, warrantor shall have no obligations under this limited warranty.

This limited warranty does not cover damage to a part or parts of the appliance from causes such as fire, accidents, freezing, or unreasonable use, abuse, or neglect by the original owner.

This limited warranty does not cover damage to a part or parts of the appliance resulting from improper installation. All plumbing and electrical connections should be made in accordance with all local codes and the installation instructions provided with the appliance. The limited warranty does not cover damage resulting from use with inadequate or defective plumbing inadequate or defective house wiring; improper voltage, electrical service, or electrical connections; or violation of applicable building, plumbing, or electrical codes, laws, ordinances, or regulations.

This limited warranty does not cover incidental, consequential, or secondary damages.

Any implied warranties on the product described in this limited warranty will not be effective after the expiration of this limited warranty.

Some states do not allow limitations on how long an implied limited warranty lasts or the exclusion or limitation of incidental or consequential damages, so the above limitations and exclusion may not apply to you. This limited warranty gives you specific legal rights and you may also have other rights which vary from state to state.



Call Our HelpLine
1-800-896-3219
Monday thru Friday 8:00am to 5:00pm EST

Made in USA. Manufactured using one or more of
the following patent numbers: 5,089,140.
5,300,230. DES.332,480. DES.331,097.
5,116,419. 5,157,979. 5,378,370.

©2003
1725 W. Williams Dr. C20
Phoenix, AZ 85027

LITHO USA
Form #51900WP Version 2
OR0203HQWI