

THETFORD

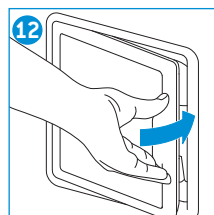
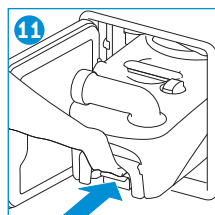
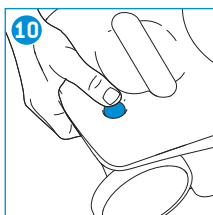
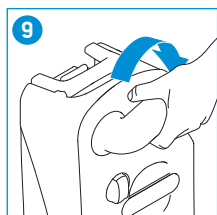
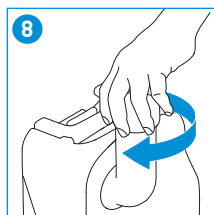
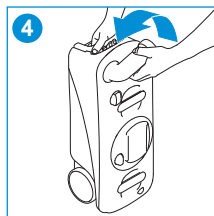
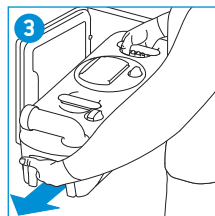
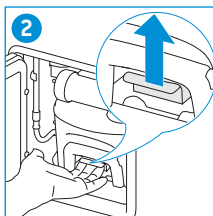
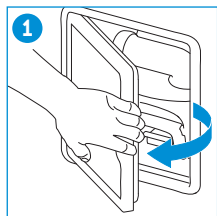


C500

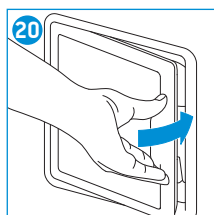
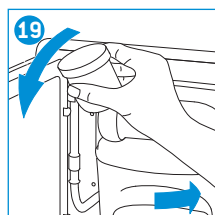
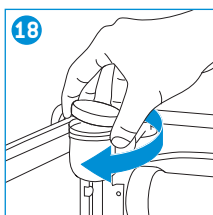
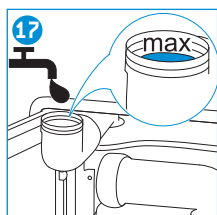
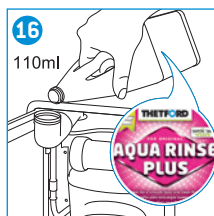
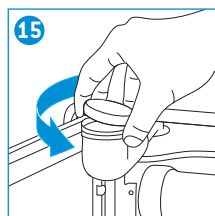
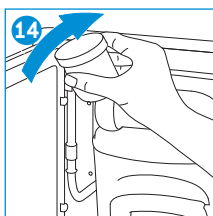
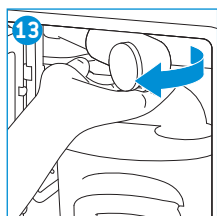
User Manual

QUICK GUIDE

Preparing waste-holding tank

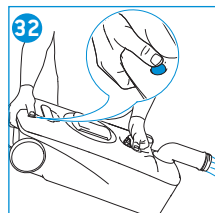
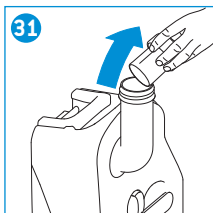
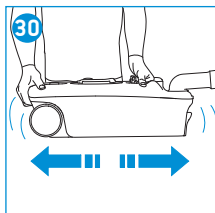
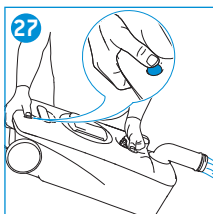
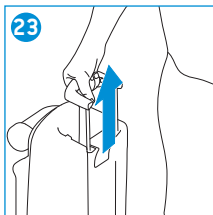
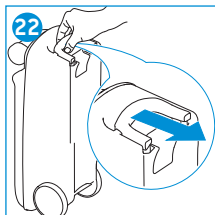


Preparing flush-water tank (only for C502-C and C502-X)

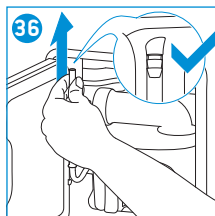
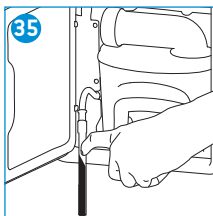
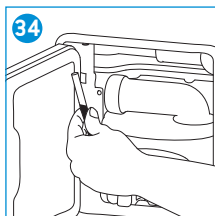
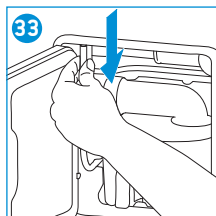


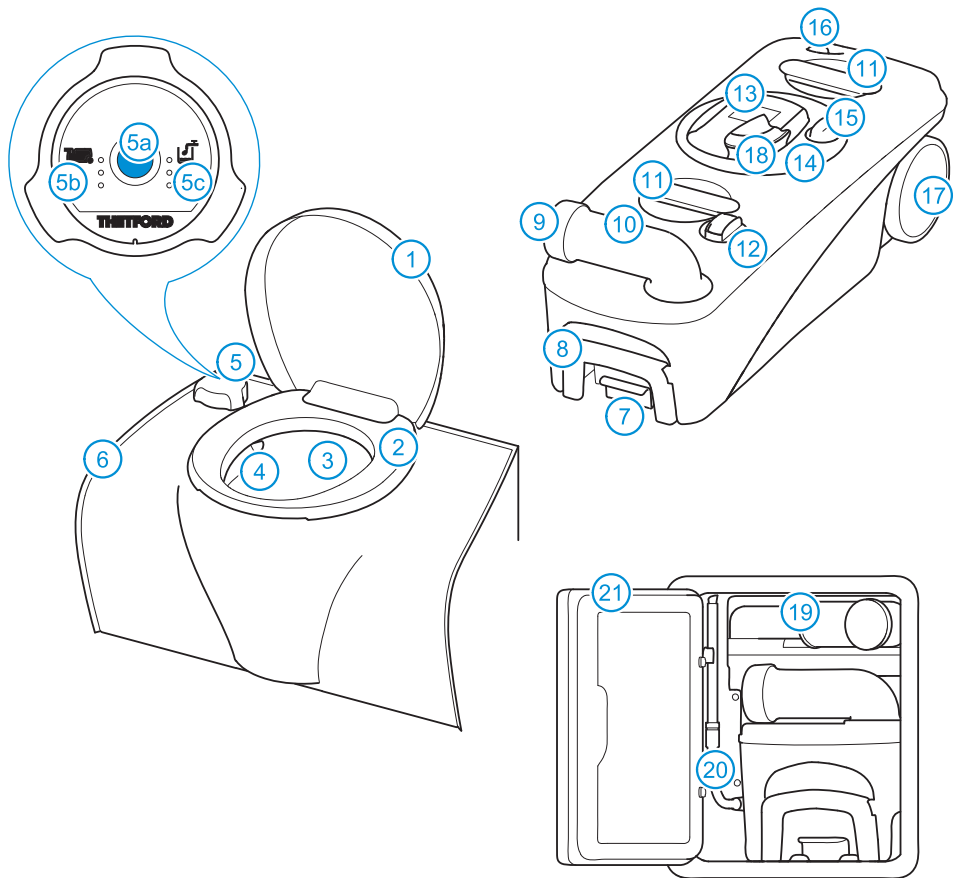
QUICK GUIDE

Emptying waste-holding tank



Emptying flush-water tank (only for C502-C and C502-X)





1 Cover • **2** Seat • **3** Bowl • **4** Nozzle • **5** Control knob to open/close blade • **5a** Flush knob • **5b** Waste-holding tank level indication (only 1 LED for C502-C) • **5c** Flush-water tank level indication (only for C502-X) • **6** Cosmetic cover • **7** Tank lock clip • **8** Pull handle • **9** Measuring cup • **10** Pour out spout • **11** Handle (2x) • **12** Automatic vent • **13** Sliding cover • **14** Waste-holding tank mechanism • **15** Blade opener • **16** Vent button • **17** Wheel • **18** Lip seal • **19** Waterfill funnel (only for C502-C and C502-X) • **20** Drain tube (only for C502-C and C502-X) • **21** Door 3

1 Introduction

This Thetford Cassette Toilet is a high quality product. It is user-friendly, meets high quality standards and gives you all the convenience of home.

Before operating and using this toilet we advise you to read the manual completely. Keep this manual in a safe place for future reference.

For the latest version of the manual please visit www.thetford-europe.com

Symbols used



OK



Tip



Special attention required



Caution (possible risk of injury or product damage)

2 Preparing for use

Before you can use your toilet, you need to prepare the waste-holding tank and for the C502-C and C502-X also the flush-water tank. It is vital that the correct amount of toilet additives is added to enjoy a long life span of your toilet and to ensure the proper breakdown of the waste in the waste-holding tank.



Never add toilet additives directly via the blade as this could damage the lip seal of the waste-holding tank. Only fill the waste-holding tank via the pour out spout.



Never use force if you cannot get the waste-holding tank back into place easily. If blockage occurs, always check if the blade handle is in the closed position.

See 'Quick Guide' diagrams 1-20 for visual reference. To depressurise the waste-holding tank, press the vent button before placing the tank back in its position.

Thetford offers a pleasantly scented toilet fluid for the flush-water tank (Aqua Rinse Plus) and a variety of waste-holding tank products (Aqua Kem Blue, Aqua Kem Green, Aqua Kem Blue Sachets, Aqua Kem Green Sachets).



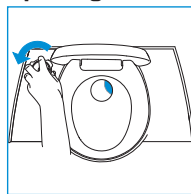
Aqua Rinse Plus keeps the flush water fresh, ensures a smooth flush and leaves a protective layer. All products for the waste-holding tank suppress unpleasant smells, stimulate the breakdown of waste, reduce the formation of gas, protect moving parts and help to keep the waste-holding tank fresh and clean.

For the differences between the distinguishing qualities of each waste-holding tank product please visit www.thetford-europe.com

The range of available Toilet Care products may vary for each country.

3 Use of your toilet

Opening and closing the blade

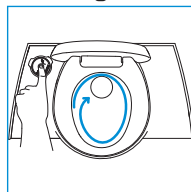


The toilet may be used with the blade open or closed. To open the blade, turn the control knob as described. Always close the blade after use.




To close the blade completely, turn the control knob fully clockwise until you hear a click.

Flushing the toilet



Flush the toilet by pressing the flush button for several seconds. The C502-C and C502-X toilets will flush with automatic pulse.

 Ordinary toilet paper can cause clogging. Use Aqua Soft toilet paper instead. This toilet paper is super-soft, dissolves quickly, prevents clogging and makes it easier to empty the waste-holding tank.



Level indication

Waste-holding tank C502-C

full

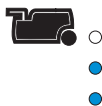


Waste-holding tank C502-X and C503-L

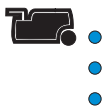
empty



half full



full



Flush-water tank C502-X

full



half full




empty




4 Emptying the tank


Waste-holding tank

The waste-holding tank has a capacity of 19,7L and requires emptying when the red light on the control knob lights up. Then the waste-holding tank can only be used for two further uses. Empty your waste-holding tank at an authorized waste dump.

 To empty the tank without splashing, press and hold the vent button with your thumb while the pour out spout is pointing downwards.

See 'Quick Guide' diagrams 21-32 for visual reference. Make sure the blade is closed. If you want to continue using your toilet after emptying, prepare the waste-holding tank again.

 Our 'green' products Aqua Kem Green, Aqua Kem Green Sachets and Aqua Rinse Plus (test ISO 11734) are absolutely safe to empty into a septic tank or small biological systems on camping sites.


 Please avoid to travel with a waste-holding tank that is more than $\frac{3}{4}$ full. This may cause leakage through the venting system.

Flush-water tank (only for C502-C and C502-X)

The flush-water tank has a capacity of 16,5L. Its water level is visible by reading the drain tube or, for a C502-X, the level indication on the control knob.

If you don't expect to use your toilet for a long (winter) period, it is important that you empty the flush-water tank. Make sure you place a sufficiently large bowl under the drain tube to catch the remaining water. Empty this bowl at an authorized waste dump.


See 'Quick Guide' diagrams 33-36 for visual reference.

 To prevent water damage to your caravan or motor home, ensure that you don't travel with a full flush-water tank or with water in the bowl.

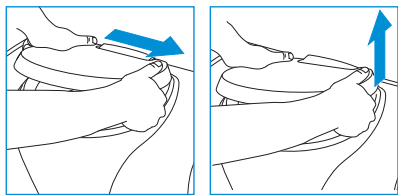
5 Cleaning

Just like your toilet at home, it is also important to clean this Cassette Toilet regularly. You will prevent limescale and ensure optimal hygiene. Clean the inside of the bowl with Toilet Bowl Cleaner and a soft brush and use Bathroom Cleaner for the outside of the toilet.



 Never use household cleaners to clean your toilet. These may cause permanent damage to the seals and other toilet components.


Remove seat & cover



To clean your toilet well, it is advised to remove the seat and cover. Push the seat and cover together to the right, then lift them up.

6 Winter use

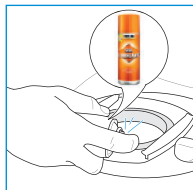
You can use your toilet as normal in cold weather as long as the toilet is situated in a heated location. If this is not the case, and there is a risk of frost, we advise not to use your toilet. Make sure you completely drain the toilet and the water system of the vehicle. Then empty the waste-holding tank and the flush-water tank (if applicable), see Putting in storage.

 Aqua Kem Blue Sachets & Aqua Kem Green Sachets are particularly suitable for winter camping as the sachets are filled with powder. They completely dissolve in water, are easy to dose and economical in use.



7 Maintenance and cleaning


To prolong the life span of your toilet, maintain your toilet regularly. Use Cassette Tank Cleaner 2 to 3 times a year on the waste-holding tank.




It safely removes stubborn limescale on the inside of the tank. When seals become dry, use Seal Lubricant to keep the seals soft and pliable.



It has been specially developed for mobile toilets and is absolutely safe to use.

 Never use Vaseline or vegetable oil to lubricate the seals as these may cause leakage to your waste-holding tank.

 The valve blade seal is a part of the toilet that is subject to wear. Depending on the extent and manner of servicing, after a certain period the seal will lose quality and must be replaced.

8 Putting in storage

Empty the flush-water tank (dependent on model) and the water system of the vehicle. Flush the toilet until no more water is being pumped out. Empty the waste-holding tank. Thoroughly clean and dry the whole toilet. Open the blade and loosen the cap of the pour out spout to ventilate the waste-holding tank. We recommend maintaining your toilet before putting it into storage. See Maintenance and cleaning.

9 Disposal

Your product has been designed and manufactured with high quality materials and components, which can be recycled and reused. When your toilet has reached its end of life, dispose the product according to the local rules. Do not dispose the toilet with normal household waste. The correct disposal of your old product will help prevent potential negative consequences to the environment and human health.

10 Questions?

If you require further information or have any questions about your toilet, please visit our website www.thetford-europe.com. If you still have questions, contact the Customer Service Department in your country or your holiday location (see the addresses on the back).

For correct and efficient support, please ensure all relevant product type information is available (see page 78).

Spare parts

Original Thetford spare parts are available through your own dealer or an authorised Thetford Service Centre.

FAQ

What should I do in case of a defect on my Thetford toilet? Contact your dealer where you bought your vehicle or, if you are on holiday, contact an authorised Thetford Service Centre.

I cannot move my waste-holding tank. Check if the blade of your toilet is completely closed.

What should I do if the blade is blocked? Loosen the cap with measuring cup from the pour out spout and try again.

Does the toilet have a fuse? Yes, the toilet has a maintenance-free automatic fuse.

11 Warranty

Thetford BV offers the end users of its products a three-year guarantee. In the case of malfunction within the warranty period, Thetford will replace or repair the product at its discretion. In this case, the costs of replacement, labour costs for the replacement of defective components and/or the costs of the parts themselves will be paid by Thetford.

1. To make a claim under this guarantee, the user must take the product to his dealer or an authorised Thetford Service Centre (www.thetford-europe.com). The claim will be assessed there.
2. Components replaced during repair under guarantee become the property of Thetford.
3. This warranty does not prejudice current consumer protection laws.
4. This warranty is not valid in the case of products that are for, or are used for, commercial purposes.

Guarantee claims falling into one of the following categories will not be accepted: • the product has been improperly used, or the instructions in the manual have not been followed [for example incorrect use of additives] • the product has not been installed in accordance with the instructions • alterations have been made to the product • the product has been repaired by an unauthorised Thetford Service Centre • the product code or serial ID has been changed • the product has been damaged by circumstances outside the normal use of the product.

5. Not using Thetford products to care for your Thetford toilet could create some damage, which would not be covered by this warranty.

Thetford is not liable for any loss and/or damage caused directly or indirectly by use of the toilet.

Thetford is not responsible for printing errors and reserves the right to make changes to product specifications without notice.