



## AirRenew<sup>®</sup> Essential

AirRenew<sup>®</sup> Essential uses an innovative patent pending technology to actively clean air. This advanced gypsum board captures and transforms formaldehyde into inert compounds, and never re-emits them into the air.

## AirRenew<sup>®</sup> M2TECH<sup>®</sup>

AirRenew<sup>®</sup> M2Tech<sup>®</sup> Indoor Air Quality Gypsum Board is for use in interior walls and ceilings and is specially designed to offer a healthier living and working environment by improving indoor air quality. AirRenew takes formaldehyde out of the air and converts it into a safe inert compound. Once captured in the board, they cannot be released back into the air. M2Tech technology also improves indoor air quality by providing enhanced moisture and mould resistance.

## M2TECH<sup>®</sup> SHAFTLINER

M2Tech<sup>®</sup> technology combines a specially formulated, fire resistive noncombustible core, enclosed in a moisture and mould resistant paper which is 100% recycled with double beveled edges for ease of installation. M2Tech achieves a score of 10 for mould resistance as per ASTM D3273, the best possible scores for these tests.

## GlasRoc<sup>®</sup> SHAFTLINER

GlasRoc<sup>®</sup> Shaftliner is designed for shaftwall and firewall systems in multi-storey buildings and multi-family residential applications. GlasRoc<sup>®</sup> Shaftliner has a specially formulated, fire resistive, noncombustible, and moisture resistant core with a reinforcing glass mat and a protective acrylic coating on the exterior surface.

## silentFX<sup>®</sup> QuickCut<sup>™</sup>

SilentFX<sup>®</sup> QuickCut<sup>™</sup> is an enhanced noise-reducing gypsum and sound-dampening viscoelastic polymer, combined in one board to reduce sound transmission between adjoining spaces. Ideal for systems requiring high STC performance, SilentFX QuickCut has an enhanced acoustical STC rating of 70 and greater in Firewall systems. Refer to our Gypsum Board Systems Manual for more detail. The product is also mould resistant and available in Type X for enhanced fire resistance.

## sustainable insulation.

CertainTeed Sustainable Insulation<sup>™</sup> is made of fiberglass that consists of rapidly renewable content, a high percentage of recycled glass, and a new plant-based binder that has no formaldehyde, harsh acrylics, dyes or unnecessary fire retardants added.

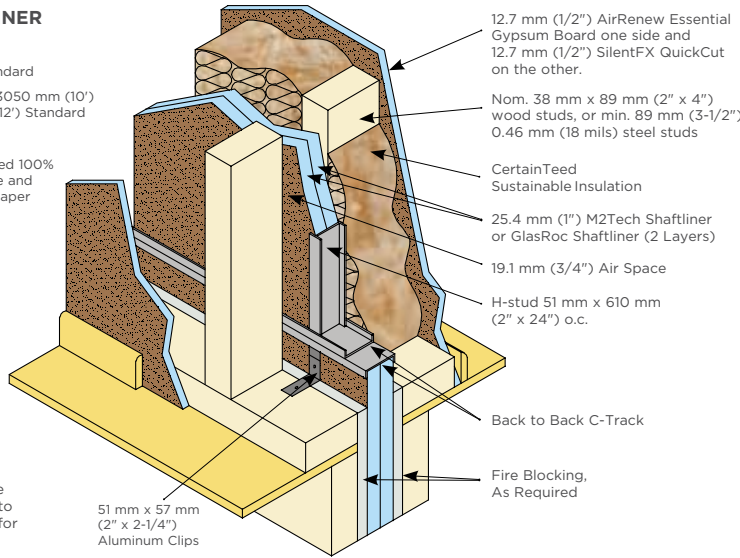
### Multi-Unit Residential Building (MURB) Systems | Firewall Solutions

	SUSTAINABLE HABITAT - PERFORMANCE BENEFITS							TESTING/APPROVALS			CERTAINTEED PRODUCTS LIST
	INDOOR AIR QUALITY	ACOUSTICS	MOISTURE & MOLD RESISTANCE	FIRE RESISTANCE	ENERGY EFFICIENCY	DURABILITY	SUSTAINABLE MATERIALS RECYCLED CONTENT				
<b>GOOD</b>											<ul style="list-style-type: none"> <li>Sustainable Insulation</li> <li>M2Tech or GlasRoc Shaftliner</li> </ul>
<b>BETTER</b>		 STC 61									<ul style="list-style-type: none"> <li>AirRenew Essential</li> <li>Sustainable Insulation</li> <li>M2Tech or GlasRoc Shaftliner</li> </ul>
<b>BEST</b>		 STC 70									<ul style="list-style-type: none"> <li>AirRenew M2Tech</li> <li>SilentFX QuickCut</li> <li>Sustainable Insulation</li> <li>M2Tech or GlasRoc Shaftliner</li> </ul>

# TYPICAL INSTALLATION DETAILS

## M2TECH SHAFTLINER

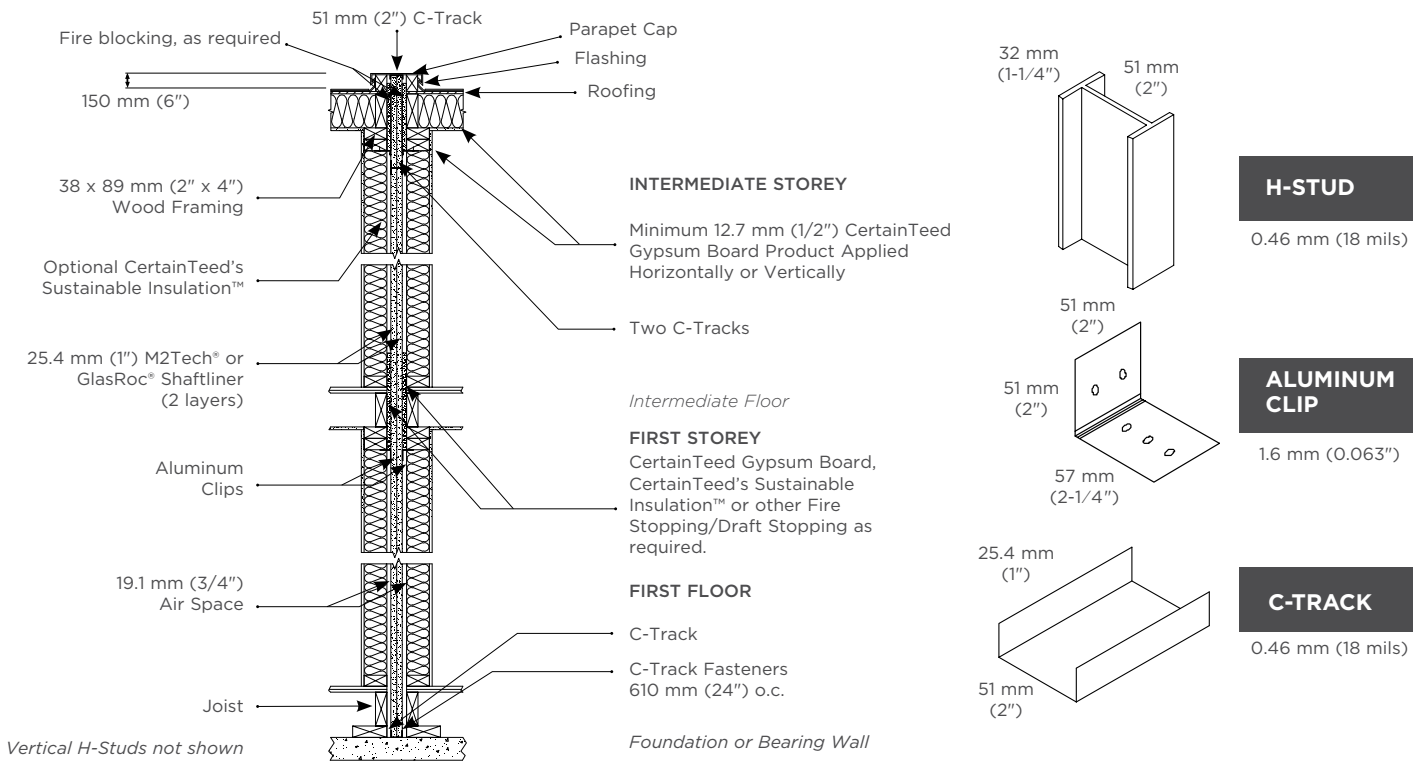
**Thickness:** 25.4 mm (1")  
**Widths:** 610 mm (2') Standard  
**Lengths:** 2440 mm (8'), 3050 mm (10') and 3660 mm (12') Standard  
**Edges:** Double beveled  
**Paper:** Light violet colored 100% recycled moisture and mould resistant paper face and back



**Installation Note:** It is important for structural purposes that the above particulars be followed to provide lateral support for the firewall.

## Benefits of M2Tech or GlasRoc Shaftliner for Firewalls

- Numerous fire-rated assembly designs for safety and performance
- Firewall ratings of two hours with high STC
- Offers the advantage of fire resistance and noise attenuation between adjoining housing units.
- Resists mould growth per ASTM D3273
- Economical and efficient installation
- Rapid ease of installation reduces overall construction time and provides a cost effective system
- Lightweight construction. Scores and snaps easily with no special handling or tools required
- ULC Listed and UL/cUL Classified for Fire Resistance per CAN/ULC-S101 and Surface Burning Characteristics per CAN/ULC-S102
- 20.7 m (68') Limiting Height
- Reduced wall thickness means greater floor area



# FIRE RESISTANCE RATING: 2h — EXPOSED TO FIRE FROM EITHER SIDE

## System WAH261

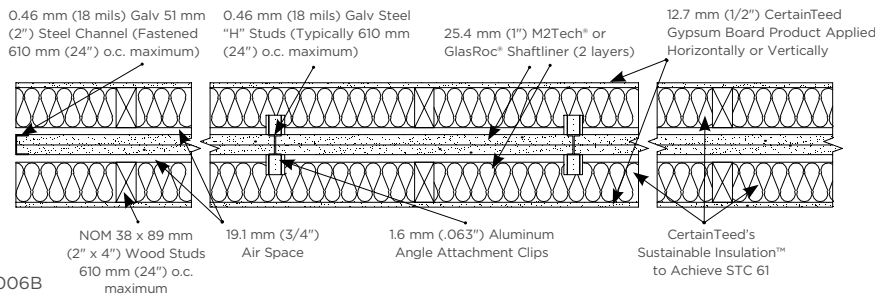
### STC 61

**Thickness:** 292 mm (11-1/2'')

**Weight:** 63 kg/m<sup>2</sup> (13 psf)

**Fire: ULC W311**  
 ITS Report No. 100260628SAT-006A, 006B

**Sound:** RAL-TL00-176



Note: STC 70 when 12.7 mm (1/2'') SilentFX® QuickCut™ gypsum is used on one side (NOAL 17-1134).

Learn more at [www.certainteed.ca/drywall](http://www.certainteed.ca/drywall). For innovative solutions for your sustainable projects please visit [www.certainteed.ca/building-science/](http://www.certainteed.ca/building-science/) frequently or better yet bookmark it.



The information contained in this document is for general purposes only. Product features and specifications are subject to change. The installation illustrations and stated sound and fire ratings are meant to serve only as a summary. Please consult the full listings and/or reports. Actual ratings will be dependent on construction practices and the integrity of the wall elements. CertainTeed Canada cannot guarantee actual STC or Fire ratings. We have prepared this information to be generally consistent with the 2015 NBCC. Check the latest version of Codes in force in your jurisdiction for all applicable requirements.