



CLICK ANYWHERE ON THIS PAGE TO RETURN TO WALL ANCHOR CHOICES INFORMATION at InspectApedia.com



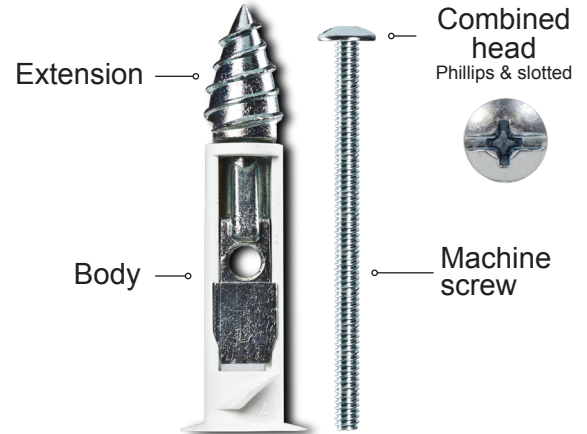
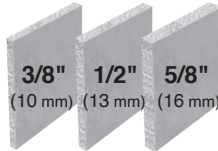
SPECIFICATIONS, LISTINGS AND APPROVALS

Body Material: Nylon
Extension Material: Die Cast Zinc Alloy / Plain polish. ASTM B240-10 & 13
Machine Screw Material: Carbon Steel AISI-1018 with Zinc plating ASTM B633 Type III
Available Diameters: 1/8", 3/16" & 1/4" (4 mm, 5 mm, 6 mm)

KEY FEATURES & BENEFITS

- ▶ Fast & easy to install
- ▶ Self-drilling
- ▶ Toggle action
- ▶ All you need is a screwdriver
- ▶ Extra strong holding power
- ▶ Supplied with a machine screw

MATERIALS



ANCHOR PARAMETERS*		SAFE WORKING LOADS IN DRYWALL**					
		3/8" (10 mm)		1/2" (13 mm)		5/8" (16 mm)	
SIZE	MATERIAL	TENSION lb (kg)	SHEAR lb (kg)	TENSION lb (kg)	SHEAR lb (kg)	SHEAR lb (kg)	SHEAR lb (kg)
1/8" x 2" (4 x 50 mm)	Zinc/Nylon	42 lb (19 kg)	75 lb (34 kg)	50 lb (23 kg)	90 lb (41 kg)	75 lb (34 kg)	135 lb (61 kg)
1/8" x 3" (4 x 75 mm)	Zinc/Nylon	42 lb (19 kg)	75 lb (34 kg)	50 lb (23 kg)	90 lb (41 kg)	75 lb (34 kg)	135 lb (61 kg)
3/16" x 2" (5 x 50 mm)	Zinc/Nylon	50 lb (23 kg)	83 lb (38 kg)	60 lb (27 kg)	100 lb (45 kg)	90 lb (41 kg)	150 lb (68 kg)
3/16" x 3" (5 x 75 mm)	Zinc/Nylon	50 lb (23 kg)	83 lb (38 kg)	60 lb (27 kg)	100 lb (45 kg)	90 lb (41 kg)	150 lb (68 kg)
1/4" x 3" (6 x 75 mm)	Zinc/Nylon	58 lb (26 kg)	92 lb (42 kg)	70 lb (32 kg)	110 lb (50 kg)	105 lb (48 kg)	165 lb (75 kg)
1/4" x 4" (6 x 102 mm)	Zinc/Nylon	58 lb (26 kg)	92 lb (42 kg)	70 lb (32 kg)	110 lb (50 kg)	105 lb (48 kg)	165 lb (75 kg)

WALLDRILLER MEASUREMENTS	SIZE (screw)	DIAMETER	LENGTH
	For screw 1/8" (4 mm)	0.4" (10 mm)	2.1" (53 mm)
	For screw 3/16" (5 mm)	0.45" (11,5 mm)	2.5" (63 mm)
	For screw 1/4" (6 mm)	0.5" (13 mm)	2.75" (70 mm)

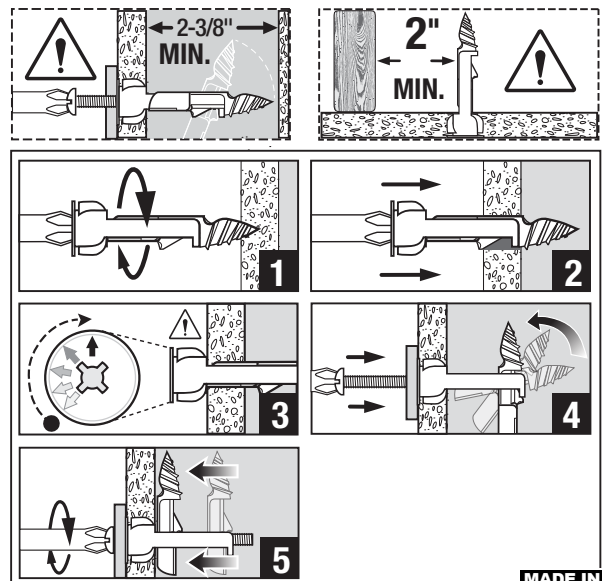


INSTALLATION INSTRUCTIONS

1. Using a screwdriver, push the tip of the DrillerToggle® into drywall and turn clockwise until flush with wall.
2. Insert the screw through the object you need to affix and into the DrillerToggle®.
3. Push the screw until you feel a resistance.
4. Turn clockwise into the anchor until firmly in place.

NOTES:

- Do not use in insulated drywall.
- COBRA can not be held responsible for any failure due to improper installation.
- Safe working loads represent a safety factor of 2:1 from ultimate test loads.
- Always follow the recommended weight limits for a safe installation.
- Always wear safety glasses.



* For a complete list of the different packaging formats available please visit our website cobraanchors.com

** Loads may vary according to the quality of the drywall.

