



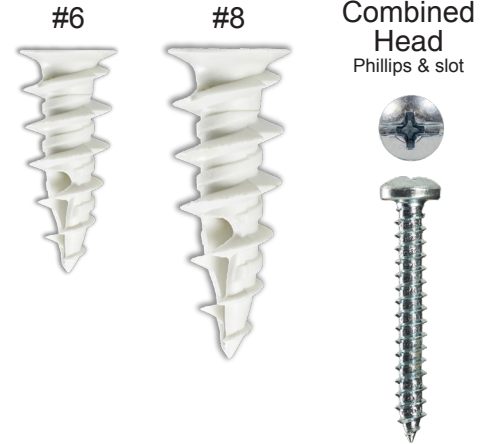
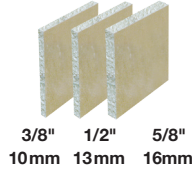
SPECIFICATIONS, LISTINGS AND APPROVALS

Body Material: Nylon
Screw Material: Carbon Steel AISI-1018 with Zinc plating ASTM B633 Type III
Available Sizes: For #6 and #8 screws (3,5 mm & 4 mm)

KEY FEATURES & BENEFITS

- ▶ Fast and easy to install
- ▶ No pre-drilling, the only tool required is a screwdriver
- ▶ Designed to install smoothly and easily through drywall
- ▶ Can easily be removed and reinstalled

MATERIALS



ANCHOR PARAMETERS *		SAFE WORKING LOADS 2:1 **					
		DRYWALL 3/8" (10 mm)		DRYWALL 1/2" (13 mm)		DRYWALL 5/8" (16 mm)	
ANCHOR SIZE & MATERIAL	SCREW SIZE	TENSION	SHEAR	TENSION	SHEAR	TENSION	SHEAR
#6 Zinc + Screws	#6 x 7/8" (3,5 mm x 22 mm)	20 lb (9 kg)	46 lb (21 kg)	23 lb (10 kg)	52 lb (24 kg)	30 lb (14 kg)	55 lb (25 kg)
#8 Zinc + Screws	#8 x 1-1/4" (4 mm x 32 mm)	23 lb (10 kg)	50 lb (23 kg)	25 lb (11 kg)	63 lb (29 kg)	38 lb (17 kg)	83 lb (38 kg)

WALLDRILLER MEASUREMENTS	SIZE	DIAMETER	LENGTH
	#6 (for screw 3,5 mm)	0.4" (10 mm)	1" (25 mm)
	#8 (for screw 4 mm)	0.6" (15 mm)	1.5" (38 mm)

INSTALLATION INSTRUCTIONS

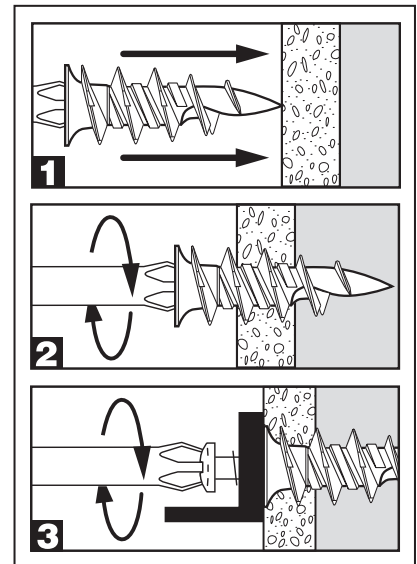
1. Using a screwdriver, push the tip of the WallDriller® into the drywall in a screwing motion.
2. Turn clockwise until flush with surface and firmly in place. (Do not overtorque)
3. Insert the screw through the object you need to affix and turn clockwise until firmly in place.

CAUTION : Always wear safety glasses.

CLICK ANYWHERE ON THIS PAGE TO RETURN TO
 WALL ANCHOR CHOICES INFORMATION
 at InspectApedia.com

NOTES:

- Technical data is provided for a proper use of the anchor
- Safe working loads represent a safety factor of 2:1 from ultimate test loads.
- Not recommended for ceiling applications.
- Loads may vary according to the quality of the drywall.



TOOLS REQUIRED



* For a complete list of the different packaging formats available please visit our website cobraanchors.com

** Loads may vary according to the quality of the drywall.