

# Ameripolish Color Systems - Ameripolish

[A ameripolish.com/colorcharts](http://ameripolish.com/colorcharts)

Due to natural variation in concrete slab properties and photography color accuracy, your results may differ from colors shown. These images are provided for visual aid purposes only. When color matching, please use a job site sample. Contact your distributor for an Ameripolish® color card transparency set.

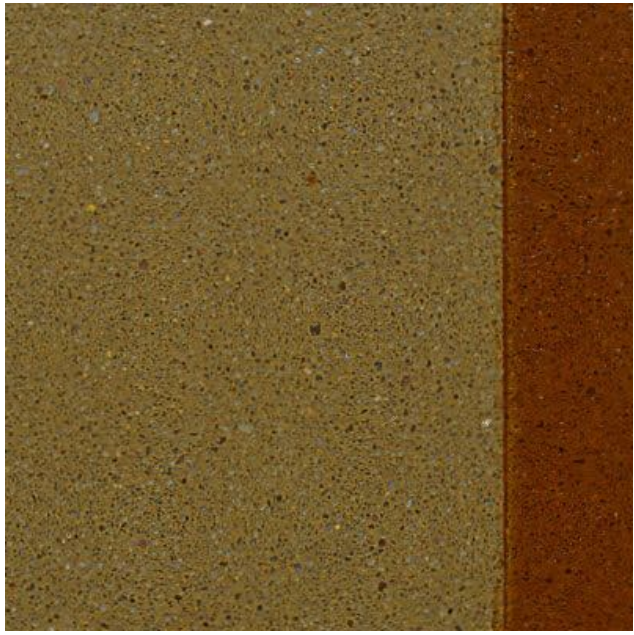
## The Signature Ameripolish Palette

Classic / Surelock / Dye-n-Seal

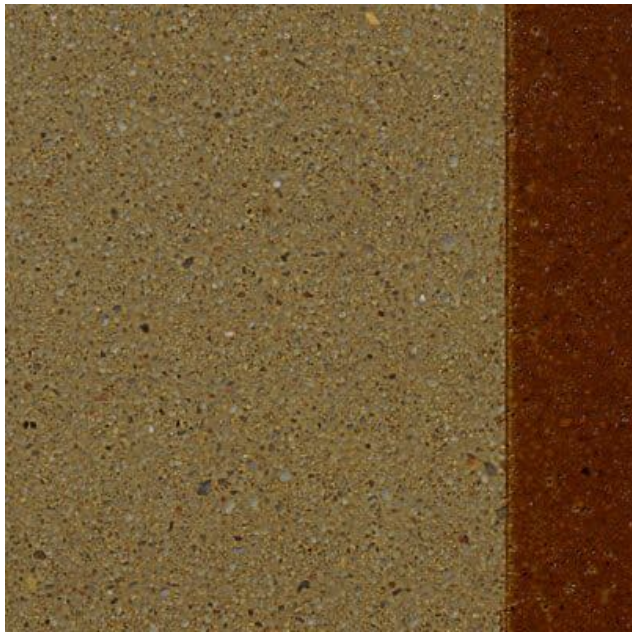


## Color Chart

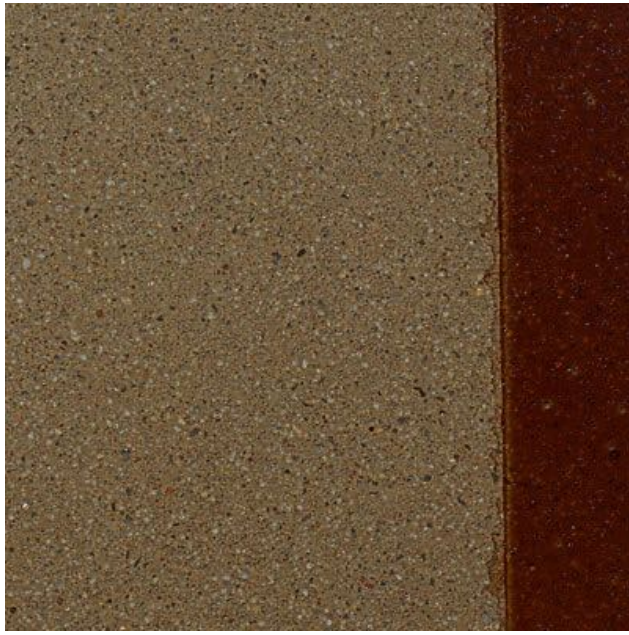
Ameripolish® offers 24 stock colors covering the most common color choices seen in floors today. Custom colors are available upon request, but are made to order. The colors listed are only a representation of the Ameripolish® Concrete Dyes. Change in concrete slab colors will affect the appearance of the dye. Color results cannot be guaranteed. Actual colors may vary.



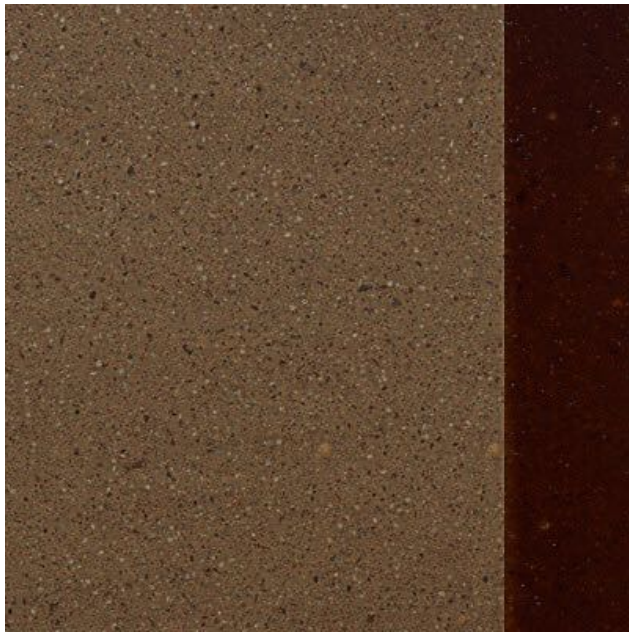
Gold  
with Edge Tint



Raw Sienna  
with Edge Tint

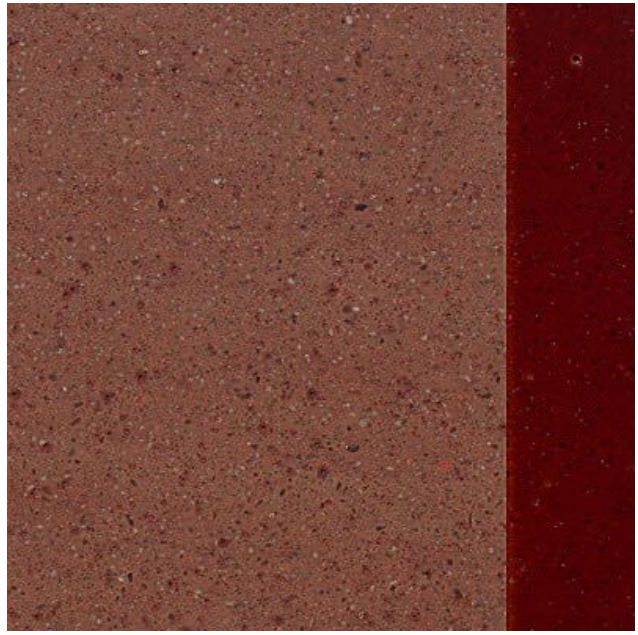


Caramel  
with Edge Tint



Sand  
with Edge Tint

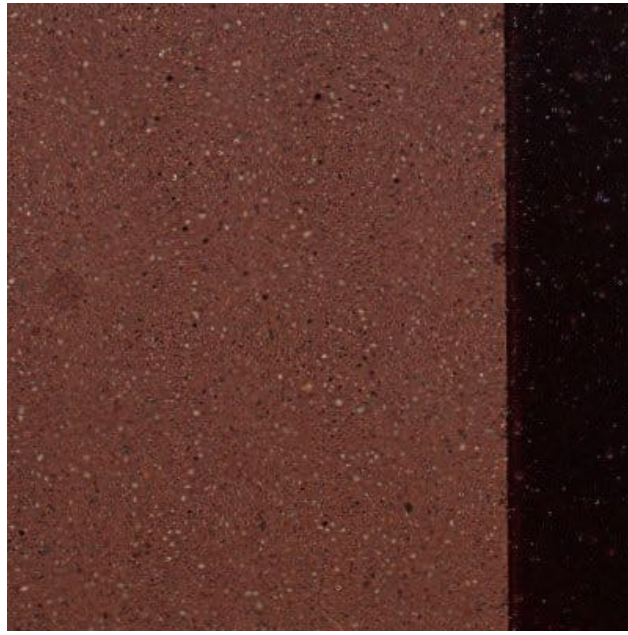




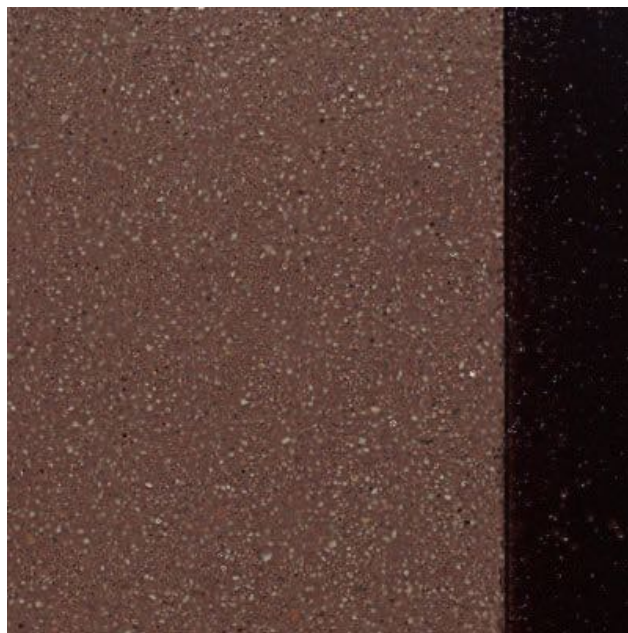
Terra Cotta  
with Edge Tint



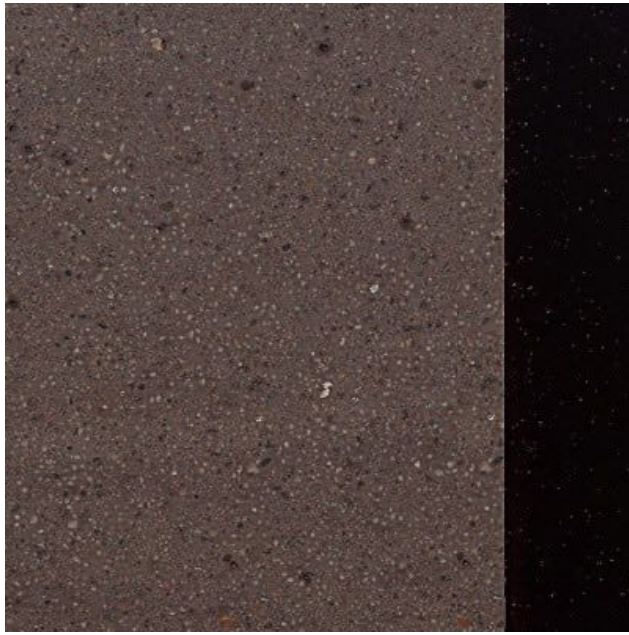
Mahogany  
with Edge Tint



Saddle Brown  
with Edge Tint



Chocolate Brown  
with Edge Tint

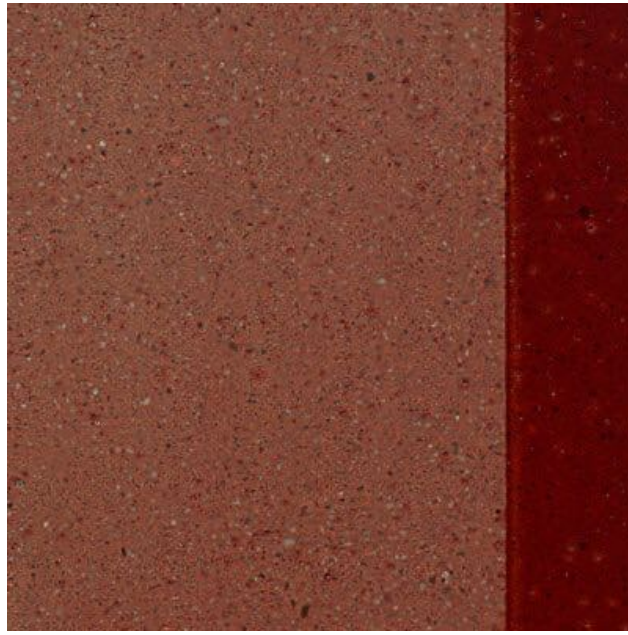


Walnut  
with Edge Tint

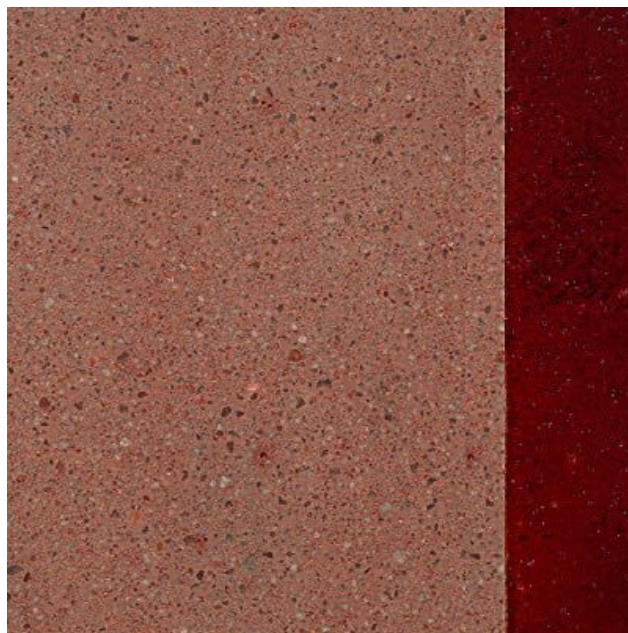


Burnt Sienna  
with Edge Tint

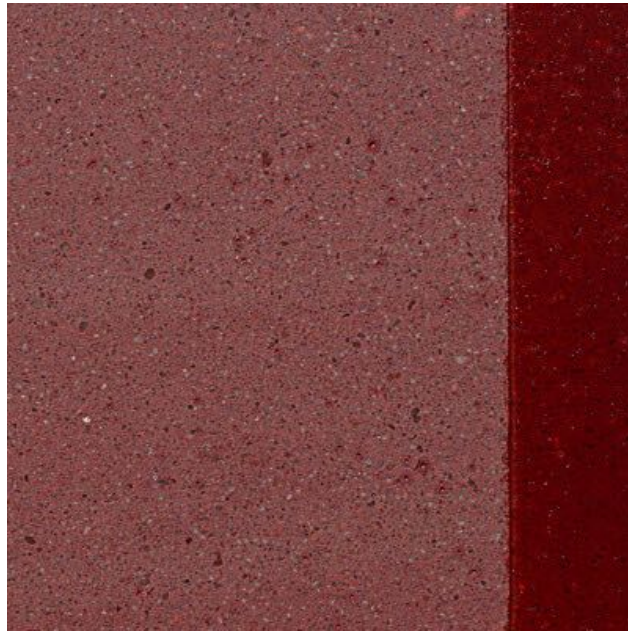




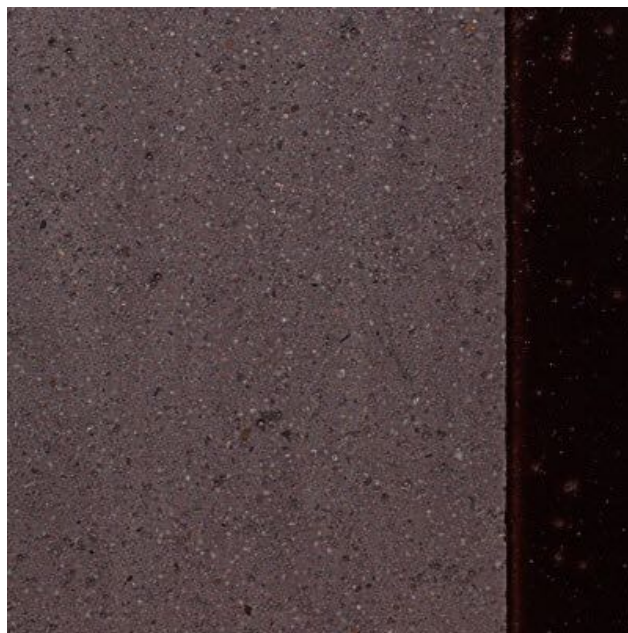
Chestnut  
with Edge Tint



Maroon  
with Edge Tint

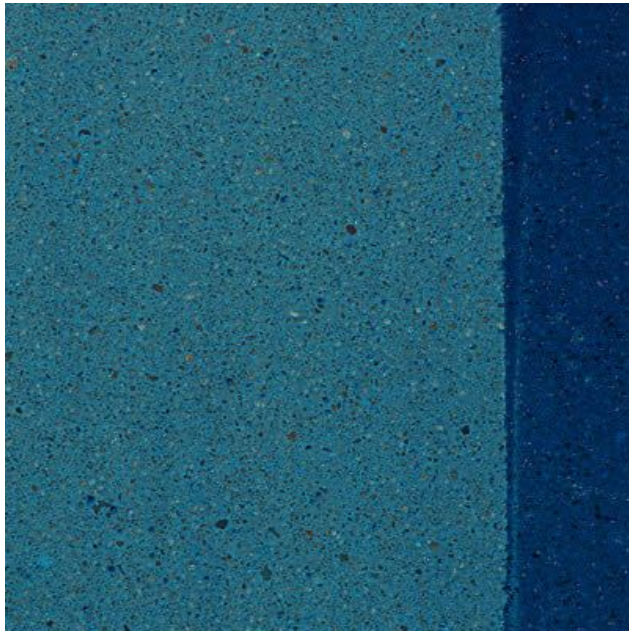


Sepia  
with Edge Tint

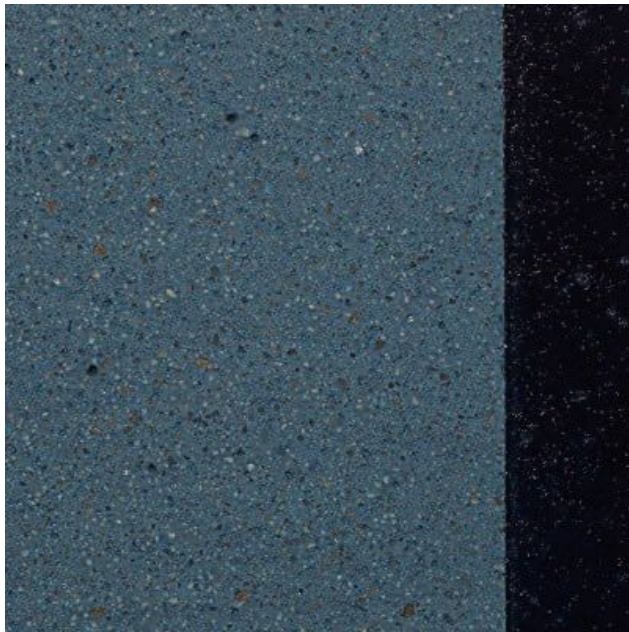


Eggplant  
with Edge Tint

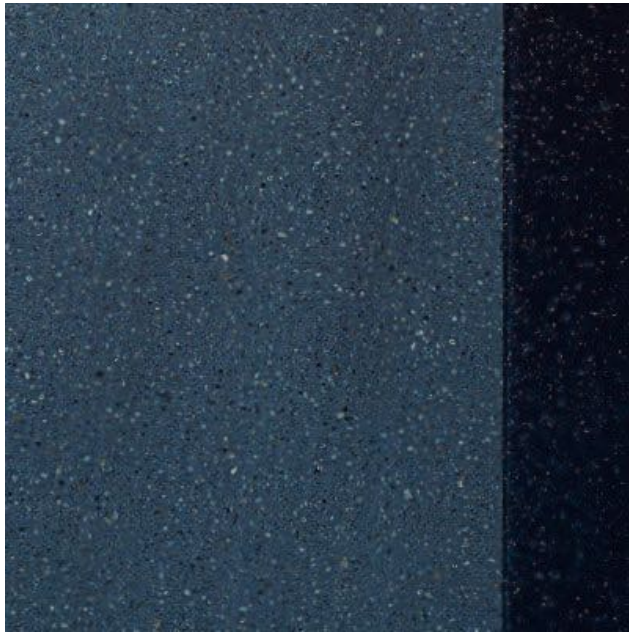




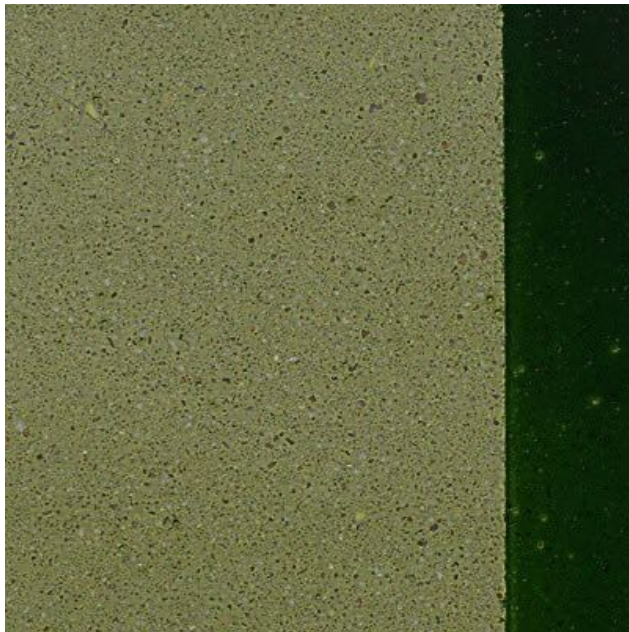
Turquoise  
with Edge Tint



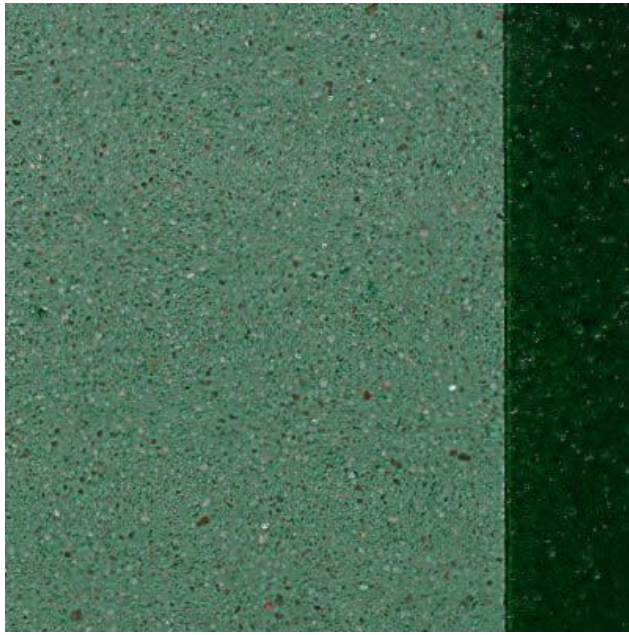
Slate Blue  
with Edge Tint



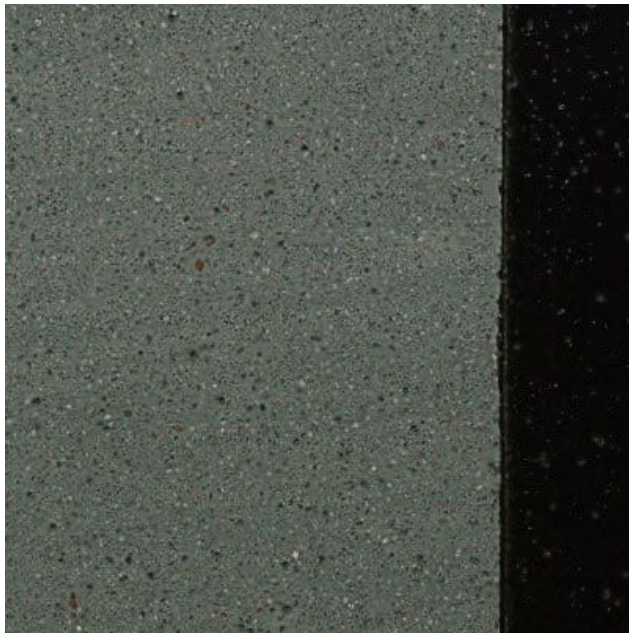
Patriot Blue  
with Edge Tint



Green  
with Edge Tint

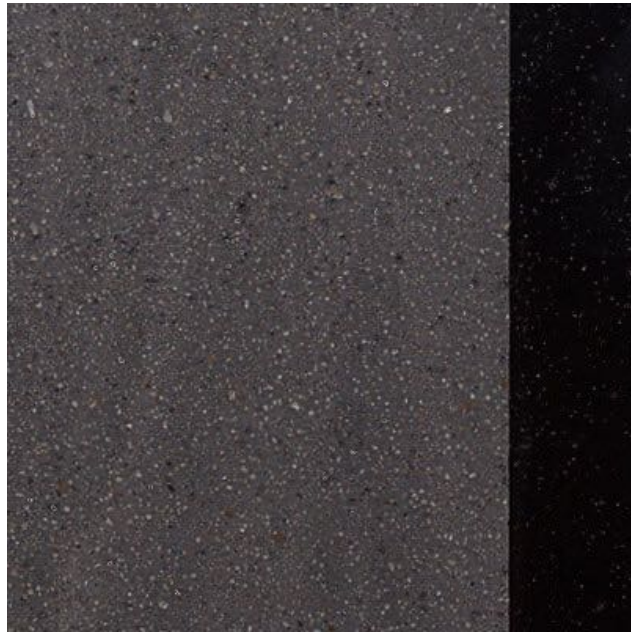


Pine Green  
with Edge Tint

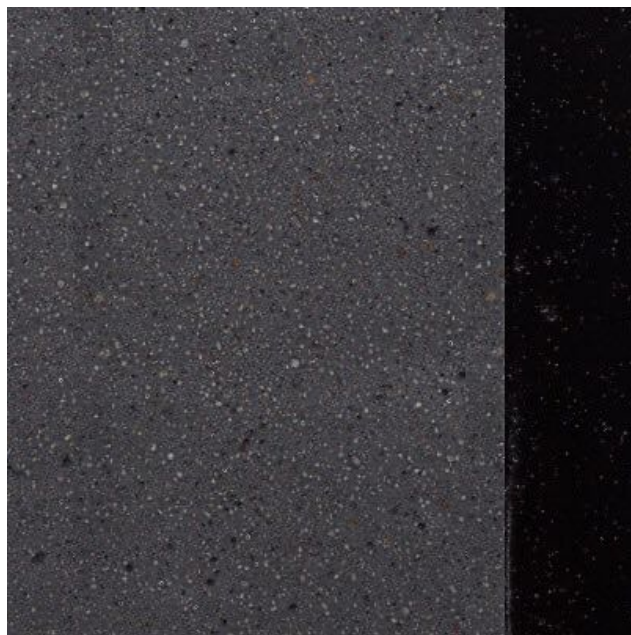


Forest Green  
with Edge Tint

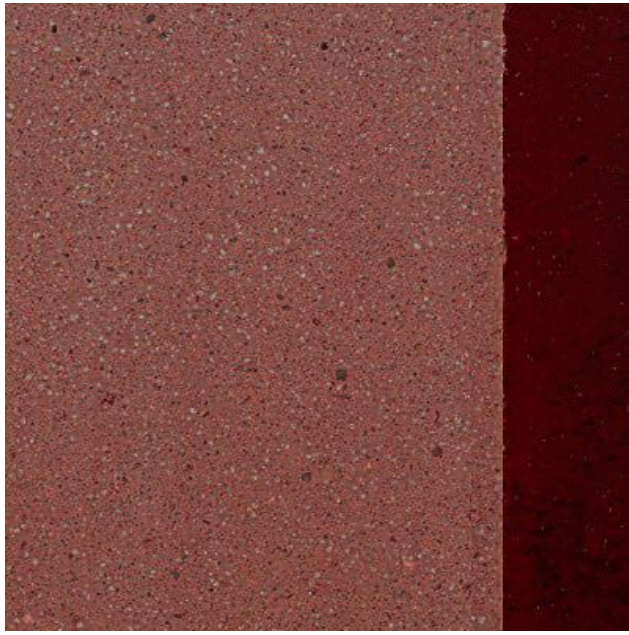




Black  
with Edge Tint



Midnight Black  
with Edge Tint



Red

(SureLock only) with Edge Tint



Gray

(SureLock only)

ColorJuice E Palette



## Color Chart

Ameripolish® offers 14 stock colors covering the most common color choices seen in exterior concrete surfaces today. Custom colors are available upon request but are made to order. The colors listed are only a representation of the Ameripolish® ColorJuice E dyes. Change in concrete slab colors will affect the appearance of the dye. Color results cannot be guaranteed. Actual colors may vary.



Natural

(no color)





Caramel



Gold



Walnut



Chocolate Brown





Sand



Saddle Brown

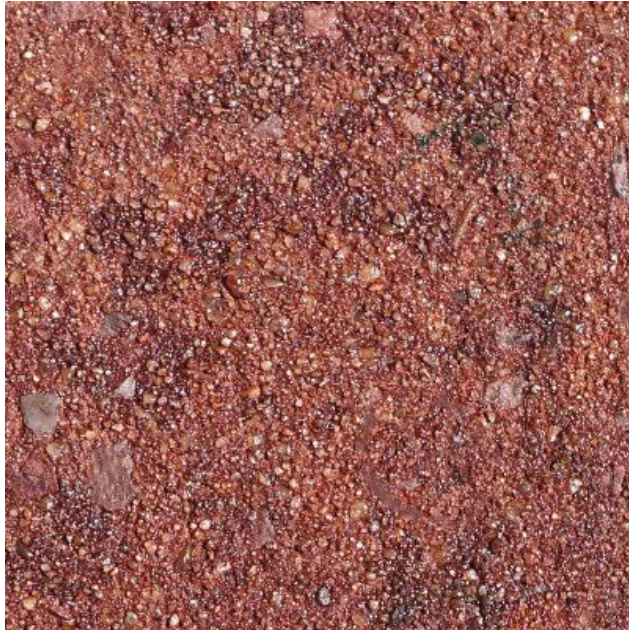




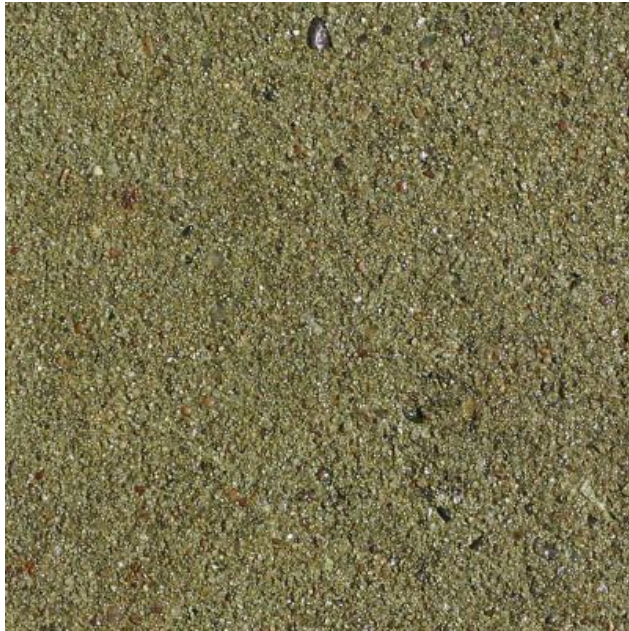
Terra Cotta



Burnt Sienna

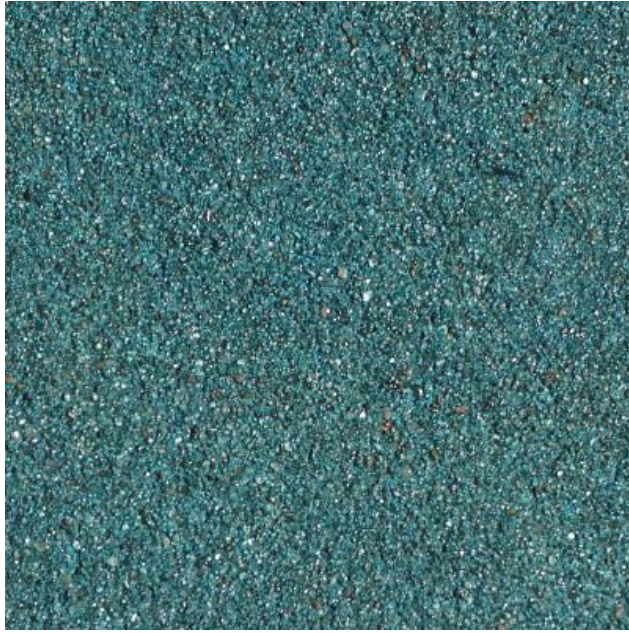


Mahogany



Olive Green





Slate Blue



Black





Gray



Transparent White

Classic Dye

Ameripolish® Classic Dye is recommended to be mixed with ColorSolve™ and has a mixing time of approximately 3 hours before applying.

Available in 22 colors.

### Surelock Dye

Ameripolish® SureLock Dye can be mixed with ColorSolve™ or water and has no dwell time after mixing.

Available in 24 colors.

### Dye-N-Seal Pro

Ameripolish® Dye-N-Seal Pro Dye is recommended to be mixed with ColorSolve™ and has a dwell time of approximately 3 hours before applying. For best results: use Dye-N-Seal Pro Dye when dying and sealing concrete only.

Available in 22 colors.

### Dye-N-Seal Dye WB

Ameripolish® Dye-N-Seal Dye is water-based. It can be mixed with ColorSolve™ or water and has no dwell time after mixing. For best results: use Dye-N-Seal Dye WB when dying and sealing concrete only.

Available in 24 colors.

### Edge Tint Dye

Ameripolish® Edge Tint Dye is used along wall perimeters preventing the need for grinding and polishing all the way up to the wall, saving time and money. Edge Tint is a two-part system and must be mixed together with another component.

Available in 24 colors.

### ColorJuice E Dye

Ameripolish® ColorJuice E Dyes with pigments that are for external use due to their UV stability. ColorJuice E comes in 14 unique colors that can be used on driveways, patios, walkways, outdoor counter tops, and much more.

Available in 14 colors.



### OS Integral Colors

Ameripolish® OS Integral Color is used with overlay floors. It can be used in combination with ColorSolve™ mixed dye to enhance color of the floor.

Available in 24 colors.