



The new degree of comfort.™

90 PLUS® WITH *DUAL COMFORT CONTROL*™ TWO-STAGE UPFLOW GAS FURNACES

RGRK- Series

Models with Input Rates
120,000 BTU/HR [35.17 kW]
(All Models 90% A.F.U.E. † or Above)



†A.F.U.E. (Annual Fuel Utilization Efficiency) calculated in accordance with Department of Energy test procedures.



- The Rheem *Classic*® Series 90 Plus with *Dual Comfort Control*™ line of upflow gas furnaces are designed for utility rooms, closets, alcoves, or attics. **Because of the low-profile 34 inch [864 mm] height, the upflow model can also be used to satisfy most applications that traditionally call for a horizontal furnace.**
- Two stages of operation to save energy and maintain optimal comfort level.
- Furnace operates at 70% capacity for low-heat and 100% capacity for high-heat.
- Compatible with single or two-stage thermostat. (For optimal performance two-stage thermostat recommended.)
- Heat exchanger is constructed of aluminized steel for maximum corrosion resistance and thermal fatigue reliability.
- Low profile “34 inch” design is lighter and easier to handle and leaves room for optional accessories.
- Left or right side gas, electric, and condensate drainage connections on upflow models.
- Integrated control board manages all operational functions and provides hookups for humidifier and electronic air cleaner.
- An insulated blower compartment, a slow-opening gas valve and a specially designed inducer system make it one of the quietest furnaces on the market today.
- Pre-paint galvanized steel cabinet.
- Molded permanent filters.
- Optional indoor or outdoor combustion air. In addition, combustion air may be piped to either the top or side of the cabinet on all upflow models. A special molded fitting is provided to ease installation.
- Transformer and control fuse protection.
- Solid bottom is standard.
- Control board diagnostics.
- A variety of cooling coils and plenums designed to use with the Classic 90 Plus gas furnaces are available as optional accessories for air conditioning models.



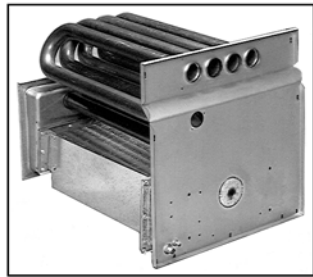
TABLE OF CONTENTS

Standard & Optional Equipment	3
Model Features/Physical Data & Specifications.....	4
Model Number Identification	5
Dimensional Data.....	6
Blower Performance Data.....	7
Accessories.....	8
Limited Warranty	9



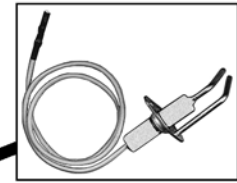
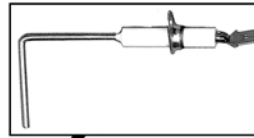
Air

Standard & Optional Equipment
RGRK Series

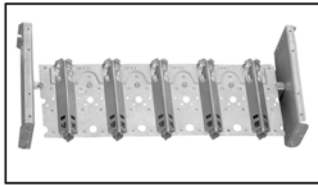


PRIMARY AND SECONDARY
HEAT EXCHANGER

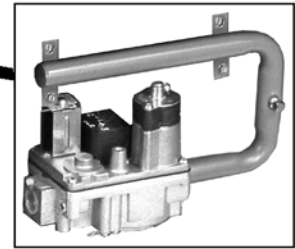
REMOTE
SENSOR



DIRECT SPARK IGNITION &
REMOTE SENSOR



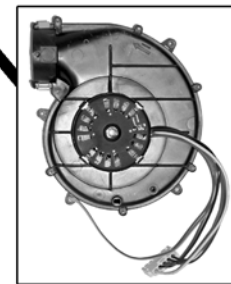
IN-SHOT BURNERS



GAS VALVE AND
MANIFOLD



PRESSURE SWITCHES



DRAFT INDUCER



INTEGRATED
FURNACE
CONTROL

STANDARD EQUIPMENT

Completely assembled and wired; heat exchanger; primary: aluminized steel, secondary: 29-4C stainless steel; induced draft; pressure switches; redundant main gas control; blower compartment door safety switch; solid state time on/off blower control; limit controls; manual shut-off valve; 100% safety lock out; cool fan off delay; field selectable heat fan off delay; one hour automatic retry; power and self-test diagnostics; flame sense current diagnostics; electronic air cleaner connections; twinning (built-in) features; humidifier connections; humidifier on/off delay; low speed continuous fan option; single speed option for heating and cooling applications; pressure regulator for natural and L.P. (propane) gasses; transformer; direct drive, multi-speed blower motor. (Please note: a thermostat is not included as standard equipment.)

OPTIONAL EQUIPMENT

Side and bottom filter racks; return air cabinet for all sizes.

NOTE: Furnace is not listed for use with fuels other than natural or L.P. (propane) gas.

All models can be converted by a qualified distributor or local service dealer to use L.P. (propane) gas without changing burners. Factory approved kits must be used to convert from natural to L.P. (propane) gas and may be ordered as optional accessories from a parts distributor.

For L.P. (propane) operation, refer to Conversion Kit Index Form.

WARNING

THIS FURNACE IS NOT APPROVED
OR RECOMMENDED
FOR USE IN MOBILE HOMES





Model Features

- Two stages of operation to save energy and maintain optimal comfort level.
- Furnace operates at 70% capacity for low-heat and 100% capacity for high-heat.
- Compatible with single or two-stage thermostat. (For optimal performance two-stage thermostat recommended.)
- Heat exchanger is constructed of aluminized steel for maximum corrosion resistance and thermal fatigue reliability.
- Low profile “34 inch” design is lighter and easier to handle and leaves room for optional accessories.
- Left or right side gas, electric, and condensate drainage connections on upflow models.
- Integrated control board manages all operational functions and provides hookups for humidifier and electronic air cleaner.
- An insulated blower compartment, a slow-opening gas valve and a specially designed inducer system make it one of the quietest furnaces on the market today.
- Pre-paint galvanized steel cabinet.
- Molded permanent filters.
- Optional indoor or outdoor combustion air. In addition, combustion air may be piped to either the top or side of the cabinet on all upflow models. A special molded fitting is provided to ease installation.
- Transformer and control fuse protection.
- Solid bottom is standard.
- Control board diagnostics.

Physical Data and Specifications U.S. and Canadian Models

MODEL NUMBERS	RGRK-12*RAJS
HIRE FIRE INPUT BTU/HR [kW] ①	120,000 [35.17]
LOW FIRE INPUT BTU/HR [kW] ②	84,000 [24.62]
HEATING CAPACITY BTU/HR [kW]	113,000 [33.12]
HIGH ALTITUDE INPUT 8000' ②	81,600 [23.91]
HIGH ALTITUDE OUTPUT AT 8000' (HIGH FIRE) [kW] ②	75,888 [22.24]
BLOWER (D x W) [mm]	11 x 10 [279 x 254]
MOTOR H.P. [W]—SPEEDS—TYPE	3/4 [559]-4-PSC
MOTOR FULL LOAD AMPS	9.5
HEATING SPEED—HIGH FIRE	MED-HI
HEATING SPEED—LOW FIRE	LOW
COOLING SPEED	HIGH
MINIMUM EXT. STATIC PRESSURE (IN. W.C.) [kPa]	.20 [.049]
MAXIMUM EXT. STATIC PRESSURE (IN. W.C.) [kPa]	.50 [.124]
HEATING CFM @ .2" [.049 kPa] W.C. E.S.P. [L/s]	1580 [745]
COOLING CFM @ .5" [.124 kPa] W.C. E.S.P. [L/s]	1900 [897]
TEMPERATURE RISE-HIGH FIRE RANGE °F [°C]	50-80 [27.8-44.4]
TEMPERATURE RISE-LOW FIRE RANGE °F [°C]	40-70 [22.2-38.9]
RETURN AIR CABINETS (OPT.) RXGR-FILTER SIZE [mm]	C24B (2) 24" x 16" [609 x 406]
STANDARD, HIGH VELOCITY PERMANENT FILTER (IN.)	22 ³ / ₄ x 25 x 1
APPROX. SHIPPING WEIGHT (LBS.) [kg]	160 [72.6]
AFUE ③	92.0%

NOTES: All models are 115V, 60HZ, 1Ø. Gas connection size for all models is 1/2" [13 mm] N.P.T.

① See Conversion Kit Index Form for high altitude derate.

② Canadian installations only.

③ In accordance with D.O.E. test procedures.

*E = Standard

*N = NO_x Models

[] Designates Metric Conversions



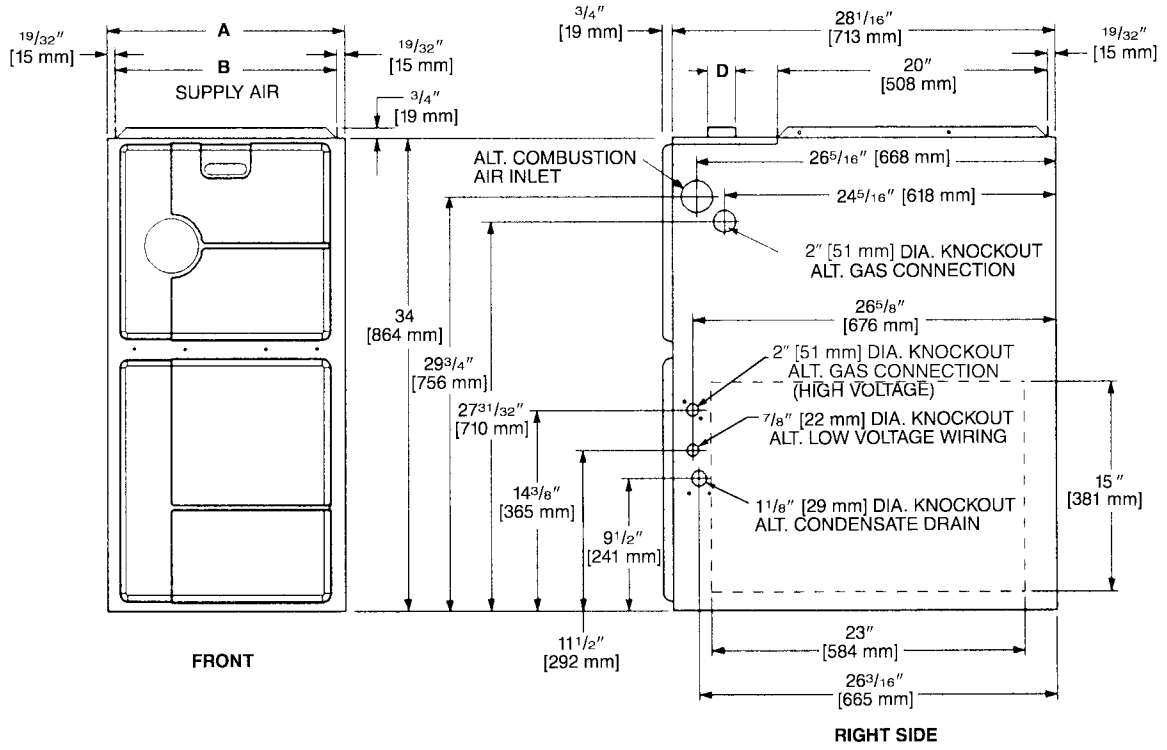
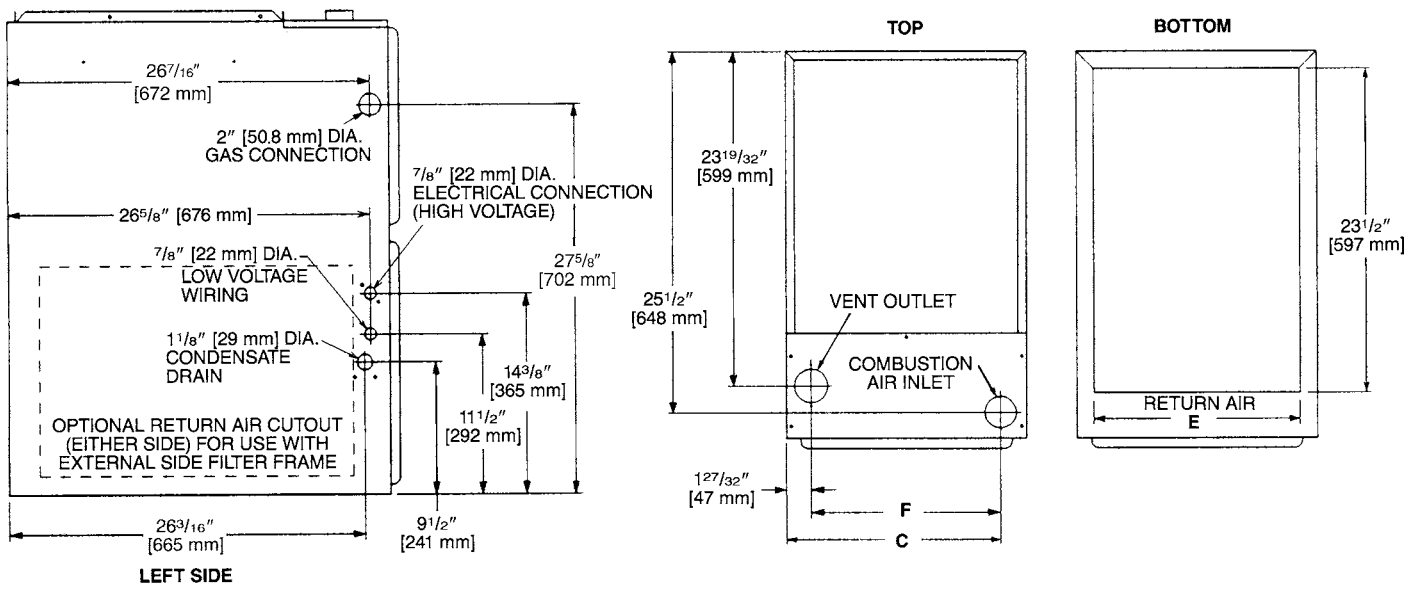


Model Number Identification

<u>R</u>	<u>G</u>	<u>R</u>	<u>K</u> —	<u>12E*</u>	<u>M</u>	<u>A</u>	<u>E</u>	<u>S</u>	<u>278</u>
Rheem	Gas Furnace	Upflow/ Condensing Gas Furnace	Design Series	Heating Input Designation	Blower Size R = 11 x 10 [279 x 254 mm]	Variations A = Std.	Heat/Cool Designation J = 1900-2100 CFM [896.7-991.1 L/s]	Fuel Code S = U.S. and Canadian Natural Gas	Option Code for High Altitude
			Electric Ignition	Input BTU/HR					
			12*	120,000 [35.2 kW]					
			NOTES: *E = Standard						
			*N = NO _x Models						

[] Designates Metric Conversions





MODEL RGRK-	A	B	C	D	E	F	LEFT SIDE	MINIMUM CLEARANCE (IN.) [mm]					SHIP WGTS. [kg]
								RIGHT SIDE	BACK	TOP	FRONT	VENT	
12+R	24 ¹ / ₂ [622]	23 ¹¹ / ₃₂ [593]	22 ⁵ / ₈ [575]	2 [51]	22 [600]	20 ²⁵ / ₃₂ [530]	0	0	0	1 [25]	2 [51]	0	160 [73]

*E=Standard
*N=NO_x Models

[] Designates Metric Conversions



Blower Performance Data

MODEL RGRK-	BLOWER SIZE [mm]	MOTOR H.P. [W]	BLOWER SPEED	CFM [L/s] AIR DELIVERY						
				EXTERNAL STATIC PRESSURE INCHES WATER COLUMN [kPa]						
				0.1 [.02]	0.2 [.05]	0.3 [.07]	0.4 [.10]	0.5 [.12]	0.6 [.15]	0.7 [.17]
12*R	11 x 10 [279 x 254]	3/4 [559]	LOW	1320 [623]	1305 [616]	1290 [608]	1260 [596]	1230 [580]	1185 [559]	1140 [538]
			MED-LO	1610 [760]	1580 [746]	1555 [734]	1515 [715]	1475 [696]	1415 [668]	1355 [639]
			MED-HI	1870 [882]	1820 [860]	1775 [838]	1715 [809]	1660 [783]	1590 [750]	1520 [717]
			HIGH	2115 [998]	2050 [967]	1990 [939]	1945 [917]	1900 [897]	1795 [847]	1690 [795]

*E=Standard

*N=NO_x Models

**Note: CFM values represent furnace-only airflow ratings.

[] Designates Metric Conversions

VENT TERMINATION KITS CONCENTRIC: HORIZONTAL/VERTICAL =

RXGY-E03A (US & Canadian Installations)

HORIZONTAL TWO PIPE: RXGY-D02, RXGY-D03, RXGY-D04
(US Installations)

RXGY-D02A, RXGY-D03A, RXGY-D04A (Canadian Installations)

RXGY-G02 (US Only)

CONDENSATE PUMP KIT: RXGY-B01

NEUTRALIZER KIT: RXGY-A01

FOSSIL FUEL KIT: RXPF-F01, RXPF-F02 (TVA)

RETURN AIR PLENUM: RXGR-C17B, RXGR-C21B, RXGR-C24B

PLENUM DATA FOR “A” COILS

Plenum adapters are required in some instances for use on upflow applications when plenum and furnace size do not match.

FURNACE WIDTH IN. [mm]	PLENUM WIDTH IN. [mm]	PLENUM ADAPTER UPFLOW	COIL PLENUM
17 1/2 [445]	16 1/4 [413]	RXAA-C185	RXAL-B16BU
17 1/2 [445]	20 1/4 [514]	RXAA-C173	RXAL-B20BU
17 1/2 [445]	21 5/8 [549]	RXAA-C187	RXAL-B21BU
17 1/2 [445]	25 1/4 [641]	RXAA-C174	RXAL-B25BU
21 [533]	25 1/4 [641]	RXAA-C175	RXAL-B25BU
21 [533]	22 1/4 [565]	RXAA-C176	RXAL-B22BU
21 [533]	21 5/8 [549]	RXAA-C188	RXAL-B21BU
24 1/2 [622]	25 1/4 [641]	RXAA-C177	RXAL-B25BU
24 1/2 [622]	21 5/8 [549]	RXAA-C187	RXAL-B21BU

LP CONVERSION KITS:

U.S./Canadian RXGJ-FP19 or RXGJ-FP21

EXTERNAL BOTTOM FILTER RACK: RXGF-CB

EXTERNAL SIDE FILTER RACK: RXGF-CA

FILTER RACK FILTER SIZES* INCHES [mm]		
MODEL RGRK-	RXGF-CB (BOTTOM)	RXGF-CA (SIDE)
12	22 3/4 x 25 [578 x 635]	15 3/4 x 25 [400 x 635]

*Filter racks are shipped without filters.

Filters shipped with furnace may be used or a suitable 1" [25.4 mm] filter.

[] Designates Metric Conversions

FOR HIGH ALTITUDES:

HIGH ALTITUDE KIT:

INPUT BTU/HR [kW]	HIGH ALTITUDE KIT NO.
120,000 [35]	RXGY-F21

NOTE: High altitude kits and options do **NOT** include additional burner orifices. If a burner orifice change is necessary, they must be ordered through PROSTOCK®. See Installation Instructions for more information.

Option – 278 furnaces are shipped with #51 DMS orifices installed. This is one drill size smaller than standard furnaces to account for expected average elevations and heating values typically seen in these areas.

CAUTION: Always follow National Fuel Gas Code (NFGC) guidelines when converting for high altitudes.

For all installations above 2000 ft. (including all option – 278 models), the burner orifice size needs to be recalculated and verified. A burner orifice change may still be required. See Installation Instructions for more information.

NOTE: For Canadian installations only, an optional derate (manifold gas pressure reduction) method may be used to adjust the furnace for altitude. See Installation Instructions for more information. This optional method may **NOT** be used for U.S. installations.

(U.S. Models—Kit packaged with furnace.
Requires field installation).

GENERAL TERMS OF LIMITED WARRANTY*

Rheem will furnish a replacement for any part of this product which fails in normal use and service within the applicable period stated, in accordance with the terms of the limited warranty.

***For complete details of the Limited and Conditional Warranties, including applicable terms and conditions, contact your local contractor or the Manufacturer for a copy of the product warranty certificate.**

Primary and Secondary Heat Exchanger Limited Lifetime
Conditional Parts Warranty*
(Registration Required) Ten (10) Years



The new degree of comfort.™

In keeping with its policy of continuous progress and product improvement, Rheem reserves the right to make changes without notice.

Rheem Heating, Cooling & Water Heating • P.O. Box 17010
Fort Smith, Arkansas 72917 • www.rheem.com

Rheem Canada Ltd./Ltée • 125 Edgeware Road, Unit 1
Brampton, Ontario • L6Y 0P5



INTEGRATED HOME COMFORT

PRINTED IN U.S.A 04/12 QG FORM NO. G11-530