

Single and Multi-Function Aquastat Controllers

L4006; L6006 Aquastat® Controller

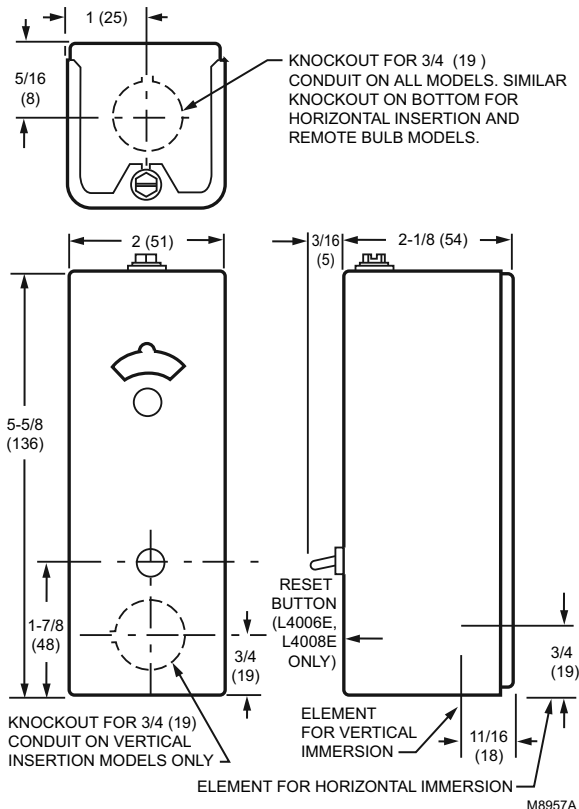


Aquastat® Controllers are immersion type devices for limiting or regulating the temperature of liquids in boilers, storage tanks, and other applications where temperature control is required.

- Totally enclosed Micro Switch™ snap-acting switches operate on temperature rise to setpoint.
- Visible control point scale and external adjustment screw permit easy setting.
- Horizontal or vertical insertion of the sensing element.
- Direct or well immersion of the sensing element.
- Models available for strap-on mounting.
- Remote bulb model may be used to sense air temperature in ducts and in outside air sensing applications.
- TRADELINE models include heat-conductive compound.
- Select models have wells.

CLICK ANYWHERE on THIS PAGE to RETURN to AQUASTAT CONTROLS at InspectApedia.com

Dimensions in inches (millimeters)



Case Dimensions: 5 5/8 in. high x 2 in. wide x 2 1/8 in. deep
(143 mm high x 51 mm wide x 54 mm deep)

Maximum Ambient Temperature: 150 F (66 C)

Operating Temperature Range: (100 F to 240 F 38 C to 116 C)

Approvals:

American Gas Association IAS: AGA Certified

Canadian Standards Association: Certified: File No. LR95329-1

Underwriters Laboratories Inc. UL Component Recognized: File No. MP466, Vol. 6, Sec.1, Guide No. MBPR2

Single and Multi-Function Aquastat Controllers

Product Number	Electrical Ratings		
	(Full Load)	(Locked Rotor)	(Millivolt)
L4006A1009	5.1A @ 240 Vac; 8A @ 120 Vac	30.6A @ 240 Vac; 48A @ 120 Vac	0.25 A @ 0.25 to 12 Vdc
L4006A1017			
L4006A1132			
L4006A1678			
L4006A1959	1.3A @ 240 Vac; 2.6A @ 120 Vac	7.8A @ 240 Vac; 15.6A @ 120 Vac	—
L4006A1967	5.1A @ 240 Vac; 8A @ 120 Vac	30.6A @ 240 Vac; 48A @ 120 Vac	0.25 A @ 0.25 to 12 Vdc
L4006A2007			
L4006A2148			
L4006B1007			
L4006B1155			
L4006B1163	1.3A @ 240 Vac; 8A @ 120 Vac	30.6A @ 240 Vac; 48A @ 120 Vac	0.25 A @ 0.25 to 12 Vdc
L4006E1067			—
L4006E1091			0.25 A @ 0.25 to 12 Vdc
L4006E1109			
L4006E1117			
L4006E1125			
L4006H1004	5.1A @ 240 Vac; 8A @ 120 Vac	30.6A @ 240 Vac; 48A @ 120 Vac	0.25 A @ 0.25 to 12 Vdc
L6006A1004			
L6006A1012			
L6006A1145			
L6006A1244			
L6006C1018			
L6006C1059			

Product Number	Application	Differential Temperature		Bulb Size		Spud Size		Insulation Depth		Switching Action	Mounting	Includes
		(F)	(C)	(inch)	(mm)	(inch)	(mm)	(inch)	(mm)			
L4006A1009	High or Low limit	5 F Fixed	3 C fixed	3/8 in. x 2 7/8 in. copper	10 mm x 73 mm copper	3/4 in. NPT	19 mm NPT	1 1/2 in.	38 mm	SPST, contacts break on temperature rise.	Horizontal or Vertical	1 1/2 in. (38 mm) insulation
L4006A1017	High or Low limit	5 F to 30 F adj.	3 C to 17 C adj.	3/8 in. x 2 7/8 in. copper	10 mm x 73 mm copper	3/4 in. NPT	19 mm NPT	1 1/2 in.	38 mm	SPST, contacts break on temperature rise.	Horizontal or Vertical	1 1/2 in. (38 mm) insulation
L4006A1132	High or Low limit	5 F Fixed	3 C fixed	3/8 in. x 2 7/8 in. copper	10 mm x 73 mm copper	3/4 in. NPT	19 mm NPT	3 in.	76 mm	SPST, contacts break on temperature rise.	Horizontal or Vertical	3 in. (76 mm) insulation, stop factory-set at 160 F (71 C).
* L4006A1678	High or Low limit	5 F to 30 F adj.	3 C to 17 C adj.	3/8 in. x 2 7/8 in. copper	10 mm x 73 mm copper	3/4 in. NPT	19 mm NPT	3 in.	76 mm	SPST, contacts break on temperature rise.	Horizontal or Vertical	3 in. (76 mm) insulation, stop factory-set at 240 F (116 C), and heat-conductive compound.
* L4006A1959	High or Low limit	2 F fixed	1 C fixed	3/8 in. x 2 7/8 in. copper	10 mm x 73 mm copper	3/4 in.	19 mm	3 in.	76 mm	SPST, contacts break on temperature rise.	Horizontal or Vertical	1 1/2 in. (38 mm) insulation and heat-conductive compound.
* L4006A1967	High or Low limit	5 F to 30 F adj.	3 C to 17 C adj.	3/8 in. x 2 7/8 in. copper	10 mm x 73 mm copper	3/4 in.	19 mm	1 1/2 in.	38 mm	SPST, contacts break on temperature rise.	Horizontal or Vertical	1 1/2 in. (38 mm) insulation, stop factory-set at 240 F (116 C).

* TRADELINE models • SUPER TRADELINE models

Single and Multi-Function Aquastat Controllers

	Product Number	Application	Differential Temperature		Bulb Size		Spud Size		Insulation Depth		Switching Action	Mounting	Includes
			(F)	(C)	(inch)	(mm)	(inch)	(mm)	(inch)	(mm)			
—	L4006A2007	High or Low limit	5 F to 30 F adj.	3 C to 17 C adj.	3/8 in. x 2 7/8 in. copper	10 mm x 73 mm copper	3/4 in.	19 mm	3 in.	76 mm	SPST, contacts break on temperature rise.	Horizontal or Vertical	3 in. (76 mm) insulation.
	L4006A2148	High or Low limit	5 F to 30 F adj.	3 C to 17 C adj.	3/8 in. x 2 7/8 in. copper	10 mm x 73 mm copper	3/4 in.	19 mm	3 in.	76 mm	SPST, contacts break on temperature rise.	Horizontal or Vertical	—
	L4006B1007	Circulator	5 F Fixed	3 C fixed	3/8 in. x 2 7/8 in. copper	10 mm x 73 mm copper	1/2 in.	13 mm	1 1/2 in.	38 mm	SPST, contacts make on temperature rise.	Horizontal or Vertical	1 1/2 in. (38 mm) insulation
*	L4006B1155	Circulator	5 F to 30 F adj.	3 C to 17 C adj.	3/8 in. x 2 7/8 in. copper	10 mm x 73 mm copper	—	—	3 in.	76 mm	SPST, contacts make on temperature rise.	Horizontal or Vertical	3 in. (76 mm) insulation, stop factory-set at 240 F (116 C), and heat-conductive compound.
	L4006B1163	Circulator	5 F to 30 F adj.	3 C to 17 C adj.	3/8 in. x 2 7/8 in. copper	10 mm x 73 mm copper	—	—	3 in.	76 mm	SPST, contacts make on temperature rise.	Horizontal or Vertical	3 in. (76 mm) insulation.
*	L4006E1067	High Limit; Manual Reset	Manual Reset	Manual Reset	3/8 in. x 2 7/8 in. copper	10 mm x 73 mm copper	—	—	3 in.	76 mm	SPST, contacts break on temperature rise.	Horizontal or Vertical	3 in. (76 mm) insulation, stop factory-set at 250 F (121 C); well adapter and heat-conductive compound.
	L4006E1091	High Limit; Manual Reset	Manual Reset	Manual Reset	3/8 in. x 2 7/8 in. copper	10 mm x 73 mm copper	—	—	3 in.	76 mm	SPST, contacts break on temperature rise.	Horizontal or Vertical	3 in. (76 mm) insulation.
	L4006E1109	High Limit; Manual Reset	Manual Reset	Manual Reset	3/8 in. x 2 7/8 in. copper	10 mm x 73 mm copper	—	—	1 1/2 in. to 3 in. less well	38 mm to 76 mm	SPST, contacts break on temperature rise.	Horizontal or Vertical	—
	L4006E1117	High Limit; Manual Reset	Manual Reset	Manual Reset	3/8 in. x 2 7/8 in. copper	10 mm x 73 mm copper	3/4 in. - 14 NPT	19 mm - 14 NPT	1 1/2 in.	38 mm	SPST, contacts break on temperature rise.	Horizontal or Vertical	—
	L4006E1125	High Limit; Manual Reset	Manual Reset	Manual Reset	3/8 in. x 2 7/8 in. copper	10 mm x 73 mm copper	—	—	3 in.	76 mm	SPST, contacts break on temperature rise.	Horizontal or Vertical	—
*	L4006H1004	High Limit; strap-on mounting on well mount.	Manual Reset	Manual Reset	3/8 in. x 2 7/8 in. copper	10 mm x 73 mm copper	—	—	1 1/2 in.	38 mm	SPST, contacts break on temperature rise.	Horizontal or Vertical	Bracket for strap-on mounting, stop factory-set at 240 F (116 C), and heat-conductive compound.
	L6006A1004	Circulator Control and High Limit or Low Limit	5 F	3 C	3/8 in. x 2 7/8 in. copper	10 mm x 73 mm copper	1/2 in.	13 mm	—	—	SPDT	Horizontal or Vertical	—
	L6006A1012	Circulator Control and High Limit or Low Limit	5 F to 30 F adj.	3 C to 17 C adj.	3/8 in. x 2 7/8 in. copper	10 mm x 73 mm copper	1/2 in.	13 mm	—	—	SPDT	Horizontal or Vertical	—
•	L6006A1145	Circulator Control and High Limit or Low Limit	5 F to 30 F adj.	3 C to 17 C adj.	3/8 in. x 2 7/8 in. copper	10 mm x 73 mm copper	—	—	3 in.	76 mm	SPDT	Horizontal	Stop factory-set at 240F (116 C) and heat-conductive compound

* TRADELINE models • SUPER TRADELINE models

Single and Multi-Function Aquastat Controllers

Product Number	Application	Differential Temperature		Bulb Size		Spud Size		Insulation Depth		Switching Action	Mounting	Includes
		(F)	(C)	(inch)	(mm)	(inch)	(mm)	(inch)	(mm)			
L6006A1244	Circulator Control and High Limit or Low Limit	5 F to 30 F adj.	3 C to 17 C adj.	3/8 in. x 2 7/8 in. copper	10 mm x 73 mm copper	—	—	3 in.	76 mm	SPDT	Horizontal or Vertical	—
* L6006C1018	Circulator Control and High Limit or Low Limit	5 F to 30 F adj.	3 C to 17 C adj.	3/8 in. x 2 7/8 in. copper	10 mm x 73 mm copper	—	—	—	—	SPDT	Horizontal or Vertical or Strap-on-mounting	—
L6006C1059	Circulator Control and High Limit or Low Limit	5 F to 30 F adj.	3 C to 17 C adj.	3/8 in. x 2 7/8 in. copper	10 mm x 73 mm copper	—	—	—	—	SPDT	Horizontal or Vertical	—

* TRADELINE models • SUPER TRADELINE models