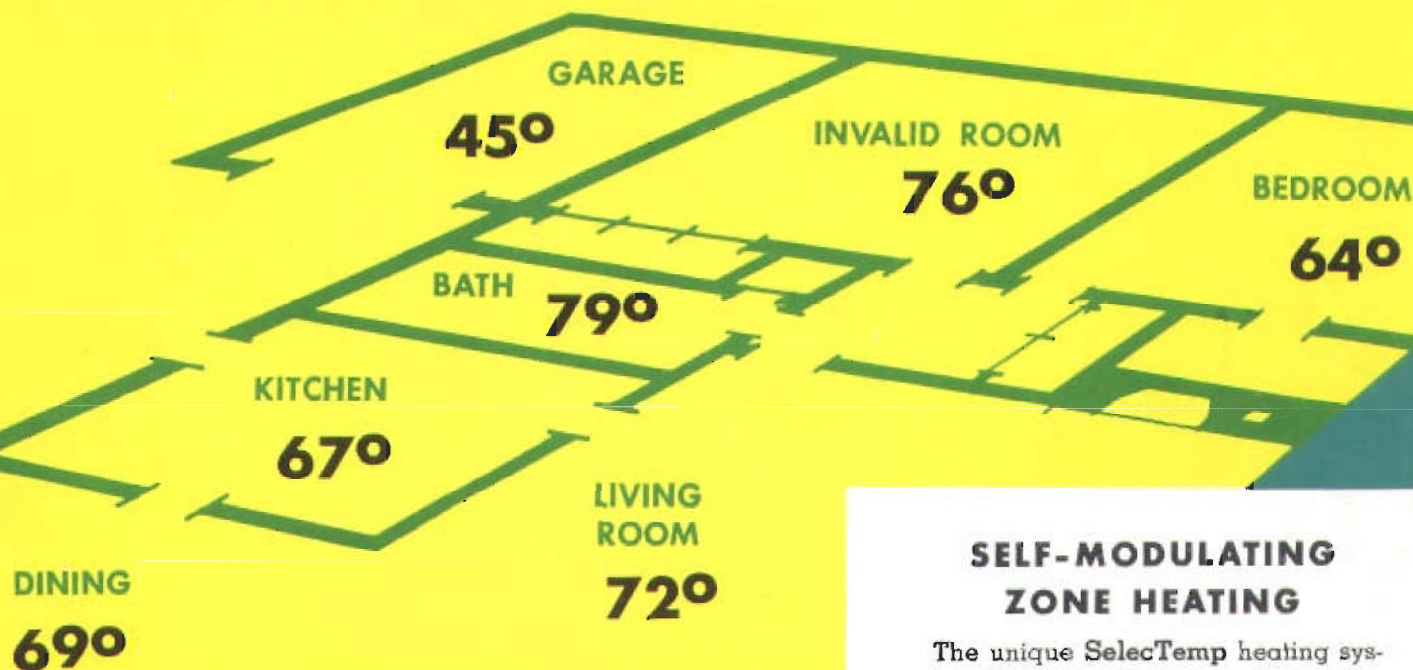


SelectTemp

TRADE MARK

PRODUCT OF IRON FIREMAN

INDIVIDUAL THERMOSTATIC CONTROL OF TEMPERATURE IN EACH ROOM



SELF-MODULATING ZONE HEATING

The unique SelectTemp heating system sets an entirely new and better standard of indoor comfort. Every room in a home or building is an individual zone, with its own thermostat. Each room is heated with filtered, warm air, continuously circulated by a compact, recessed wall unit. Low pressure steam, supplied to the unit through small flexible copper tubing, provides heat and also power for the circulating fan. Ideal for new construction or modernization. SelectTemp systems are engineered and manufactured by Iron Fireman, famous since 1923 for fine heating equipment.

*For every size
and type
of building*



RESIDENCES
HOTELS AND MOTELS
APARTMENT HOUSES
HOSPITALS
INSTITUTIONS
OFFICE BUILDINGS

IRON FIREMAN
MANUFACTURING COMPANY
CLEVELAND 11, OHIO

Now

INDIVIDUAL THERMOSTATIC CONTROL OF TEMPERATURE IN EACH ROOM

*at a cost which permits its use
in any building from the smallest
home to the largest residential
or commercial building*

Here is a new and better heating system that makes it possible for people to be *individually* and *independently* comfortable, under the same roof!

Young or old, physically active or sedentary, well or ill, people require different degrees of warmth for greatest comfort. Grandma with her knitting needs a different temperature than the young people in the recreation room. Father in his home workshop and baby in his bath each have different heating requirements. With separately controlled SelecTemp room units, every space, in every building, has its own ideal climate.

Because SelecTemp units have individual thermostats they provide extremely important advantages over usual systems of heating that have the conventional "master" thermostat to control several or all locations in the building.

The "master" thermostat used in ordinary heating systems is generally located on an inside wall, in a center hall or other location, where it is supposed to "average" the temperature of the entire building.

If the "master" thermostat of a conventional heating system is reset for a changed heat demand at some particular location, then *all* the radiators or registers that this thermostat controls will respond proportionately. The warmth of all other places that were too hot, too cold, or just right, will be changed for either increased comfort or increased discomfort—depending upon the previous "average" thermostat setting. But a change in the thermostat setting of any SelecTemp unit will not affect units in other locations.



77°



79°



73°

Individual SelecTemp thermostats in each room unit respond quickly and accurately to maintain the warmth level selected for each room or space. They automatically compensate for variations in temperature due to changes in outdoor temperatures, variations in solar heat gain from incident sunlight, and changes in velocity and direction of the wind.

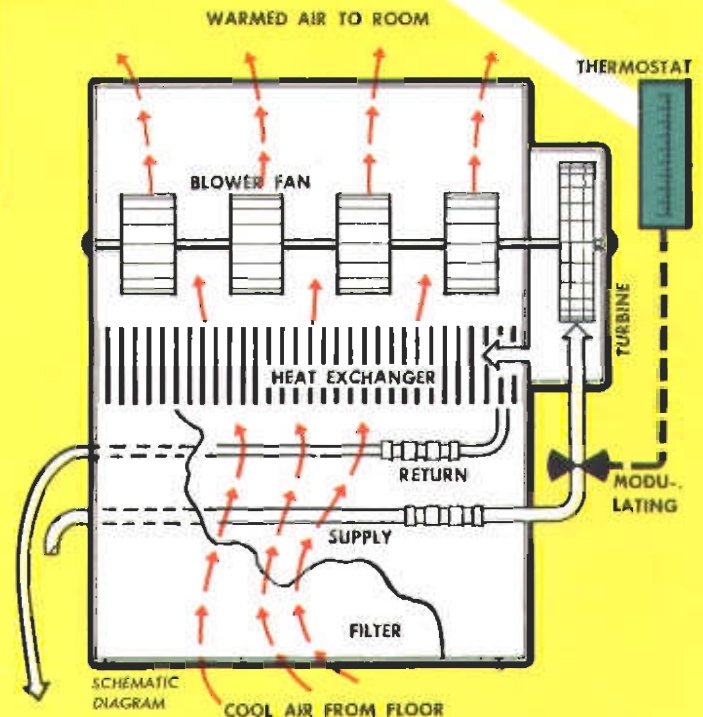
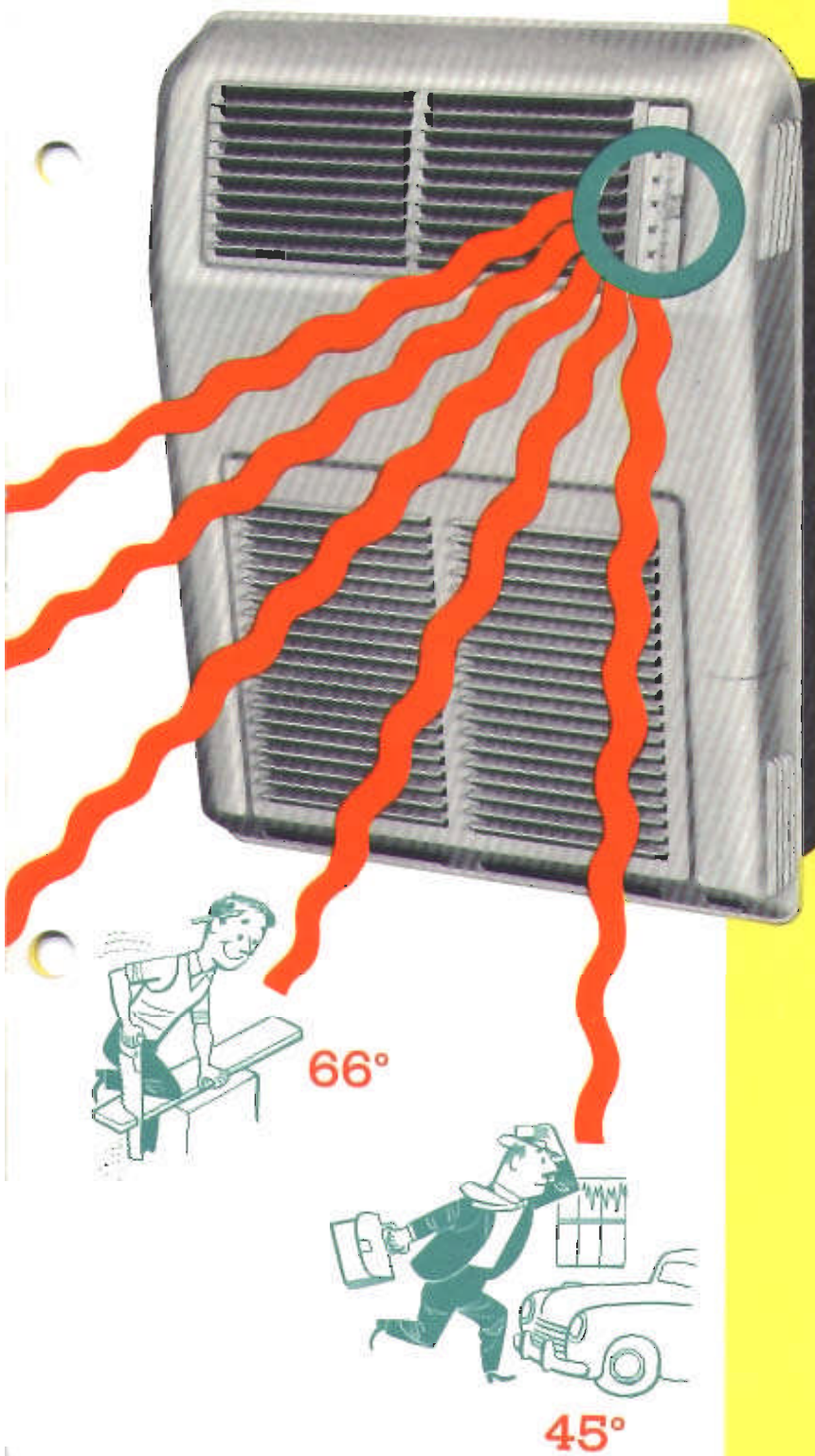
A room with a fireplace burning or a kitchen where the oven is operating needs less heat from the central heating system. Temporary opening of windows or doors causes heat loss. Rooms occupied

SIMPLE OPERATION OF SELECTEMP UNITS

The key to the comfort and economy of the **SelectTemp** heating system is that each separate heater unit is *individually* controlled. Each unit delivers a *continuous* flow of filtered warm air—in the *exact* amount needed to maintain the temperature selected for the location. Here is how simply the **SelectTemp** unit operates:

STEAM SUPPLY—Each **SelectTemp** heater unit receives its own supply of steam through a $\frac{1}{4}$ " copper tube. When the thermostat setting of one room unit is changed it does not affect the heat output of any other unit. Boiler location has no effect on the steam supply to individual room units.

THERMOSTAT—Each **SelectTemp** unit is separately controlled by its own non-electric thermostat through a temperature range of 40° to 90°F. Warmth level is accurately maintained by the thermostat actuation of the modulating valve. This valve in turn, controls the flow of steam that drives the turbine and air-circulating blower fan, thus regulating both the fan speed and the heat output.



TURBINE AND BLOWER FAN—Mounted on the same stainless steel shaft that turns in self-aligning Graphiter bearings, the turbine and fan operation is smooth and quiet. No lubrication or service is required. The speed of the fan varies according to the heat output demanded by the thermostat. **SelectTemp** eliminates the usual "on-and-off" cycles that result in "cold 70°" stratification. The unit operates between slow and full speeds to supply a continuous flow of heat varying from 1/20th to maximum output capacity.

FILTERED AIR—All circulated air is filtered through a high-capacity, removable, spun glass filter. Air is drawn in through the lower louvers and travels through the filter before it is warmed by passage through the cells of the heat exchanger. It is then delivered to the turbine-driven blower fan.

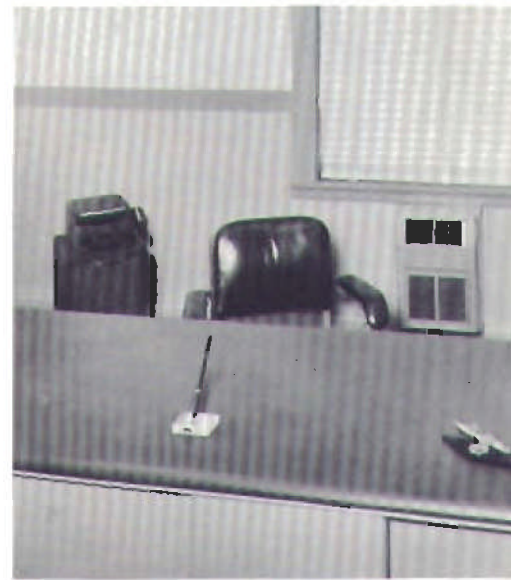
HEAT EXCHANGER—Steam travels from the turbine chamber to a highly efficient automotive type copper heat exchanger that always operates at a slight vacuum. The fan delivers a gentle and continuous flow of warmed, clean air to the room through diffusing louvers near the top of the **SelectTemp** heater unit. Condensed steam from the heat exchanger returns by gravity to the boiler through a $\frac{1}{8}$ " copper tube.

by several people require less heat than rooms where there are only a few, because people give off heat. **SelectTemp** units adjust to these conditions automatically, to keep each room at the temperature for which its own thermostat is set.

With **SelectTemp**, heat in rooms temporarily unused can be turned down, to as low as 40 degrees, just as easily as the electric lights are switched off when not needed. And an unheated room can be brought back quickly to comfort level simply by resetting the thermostat.



ABOVE: A bathroom with plenty of counter space in the Dale Mehring residence, Toledo, Ohio. **RIGHT:** An attractive bathroom in the home of Robert F. Kerhoff, La Porte, Ohio. Both these rooms have adjustable SelectTemp comfort.



ABOVE: The offices of the American Shipbuilding have individually controlled warmth from the SelectTemp for buildings for whatever use or size can have p

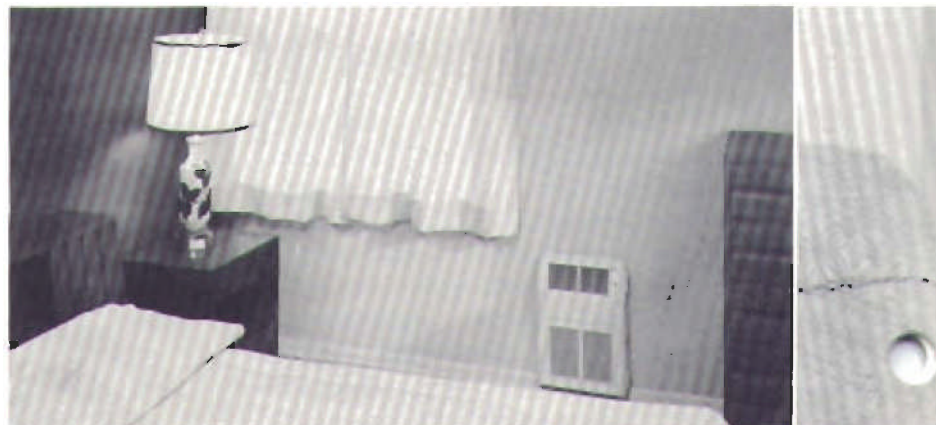


ABOVE: An inviting chair in the home of V. McGee in Maumee, Ohio, where young or old can have a look at the outdoors and enjoy the gentle warmth of the SelectTemp heating unit.

**FOR
ANY COMFORT
REQUIREMENT**



BELOW: A bedroom in the home of Robert F. Kerkhall, La Porte, Ohio. **ABOVE:** A unit of the De Ohio, with a detail of the bedroom shown **LOWER RIGHT**. Fine motels are providing SelectTemp guests to make them as comfortable as if they were at home.



lized warmth for work, play, or rest



Company of Lorain, Ohio, SelectTemp System. The rooms provide localized comfort.

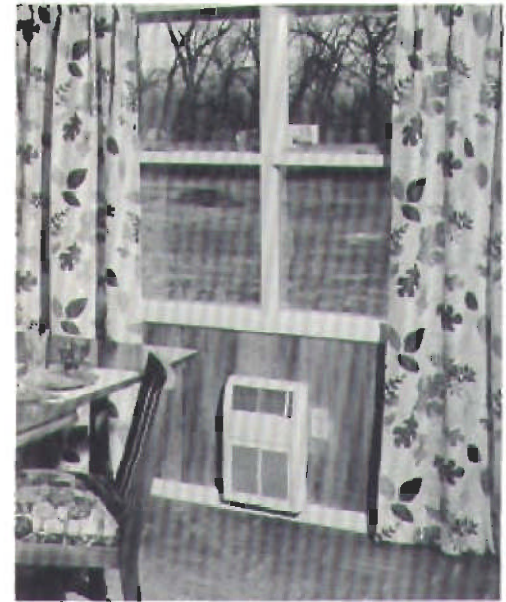


the Motel in Toledo, Ohio, for heating their



IMPORTANT *SelectTemp* ADVANTAGES

1. Each heater unit operates independently of all others, to provide localized comfort to suit occupants of every room or zone.
2. Units respond quickly and automatically to changes in weather or indoor heat gain to maintain desired temperature.
3. Modulated heating; fans run faster or slower in response to varying heat demands. No "stop-and-start" cycles with resulting "cold 70°". Instead, controlled and continuous circulation of warmed, filtered air.
4. No fuel waste. Heat supplied to each room in exact amount needed, without overheating or underheating. Heat can be turned down to as low as 40° when a room is not in use, with quick response when heat is again wanted. Negligible heat loss from small diameter, 1/4-inch copper steam supply tubing.
5. Since each room has its own filter, cleaning and redecorating are reduced to a minimum. Odors, dust or bacteria are not circulated throughout house or building.
6. Low installation cost. Use of small soft copper tubing saves time and money in new construction and modernization. SelectTemp is non-electric—no wiring required. Residential boiler can be installed anywhere, for maximum economy and convenience—in main floor utility room or basement.
7. Recessed wall units are compact and attractive in appearance, and occupy very little space. They can be finished to fit any desired color scheme.
8. Water coils in boiler provide continuous, economical year-round domestic hot water supply.



ABOVE: People who enjoy a warm breakfast can enjoy a quickly warm room, too, as in this breakfast room of the Robert F. Kerkhoff home in La Porte, Ohio.



ABOVE: Entrance to the Wick Drive-In Hotel, Youngstown, Ohio, and UPPER RIGHT is a corner of the lobby. At the RIGHT a glimpse of a bedroom in the Cleveland Motel in Cleveland, Ohio.



ings in every climate and all kinds of weather

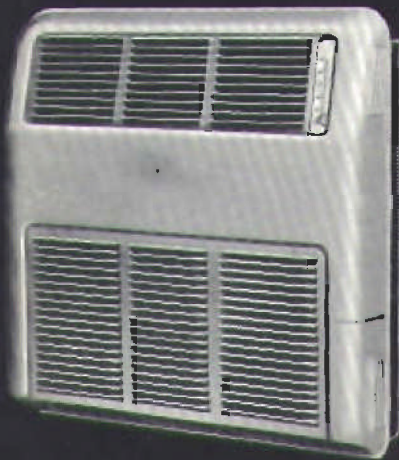
3 SIZES FOR ANY COMFORT REQUIREMENT



H-6



H-12



H-18

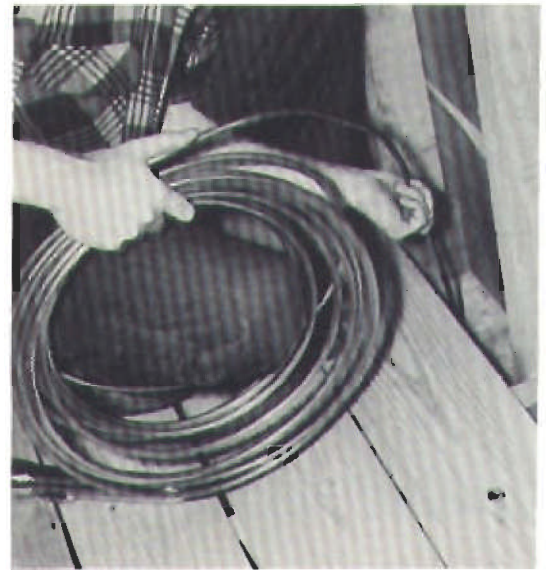
IRON FIREMAN

SelectTemp IS
TRADE MARK

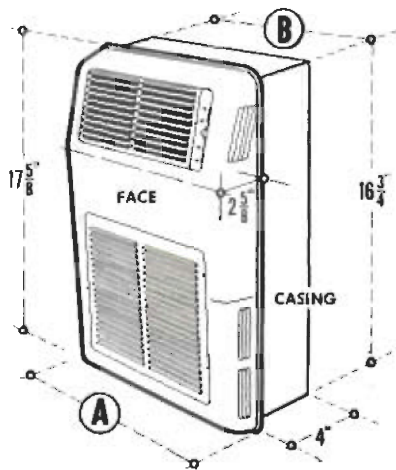
PIPING IS EASY TO RUN AS WIRING

RIGHT. A mechanic is feeding the flexible copper tubing down through a wall on a remodeling job. Unlike "hard" piping, the long lengths of the soft copper tubing are snaked into the wall for most direct runs, with minimum of cutting and fitting.

For usual runs up to about 40 ft., the 1/4" I.D. supply lines and the 1/8" I. D. gravity return lines are of soft copper tubing. Tubing is easily bent by hand for streamlining around obstructions. Headroom is not reduced, which often saves on building costs. Small size of tubing greatly reduces transmission heat losses



HIGHLY EFFICIENT HEATING UNITS



LEFT. The louvered front is easily removable, and is finished in a neutral color baked enamel. When mounted in the wall the heating unit is unobtrusive, and can be refinished to match or harmonize with decorating scheme, or left with its neutral finish. The steel casing enclosing the heater element is mounted in the ordinary stud space in the wall.

Provisions can be made for supplying fresh, filtered, warmed, outside air through the heating units. The resulting ventilation is controllable, regardless of wind or temperature.

Under some conditions, two separate rooms may be heated by a single unit located in the dividing partition.

The individual thermostat control is conveniently located for finger-tip operation and the unit is completely non-electric.

	H-6	H-12	H-18
Max. Btu delivery	6000	12000	18000
Min. Btu delivery	300	600	900
A—Face width	9 1/4"	13 5/8"	18"
B—Casing width	6 1/4"	10 1/2"	14 7/8"
Weight of unit	13 lbs.	18 lbs.	22 lbs.
Air volume CFM	60	120	180

SIMPLY AND QUICKLY INSTALLED

The speed and economy of installing **SelectTemp** is not restricted by the type of construction; size, shape or arrangement of plan; whether a new or existing building; with or without basement.

The various parts of the **SelectTemp** system have been engineered for flexible installation without time-wasting or costly special provisions under widely diverse architectural conditions. **SelectTemp** units are assembled in steel enclosures for mounting in wall stud spaces.

The replacement of worn-out or unsatisfactory heating systems in existing buildings with **SelectTemp** re-

quires a minimum of cutting and patching, without interruption of normal activity in home or building.

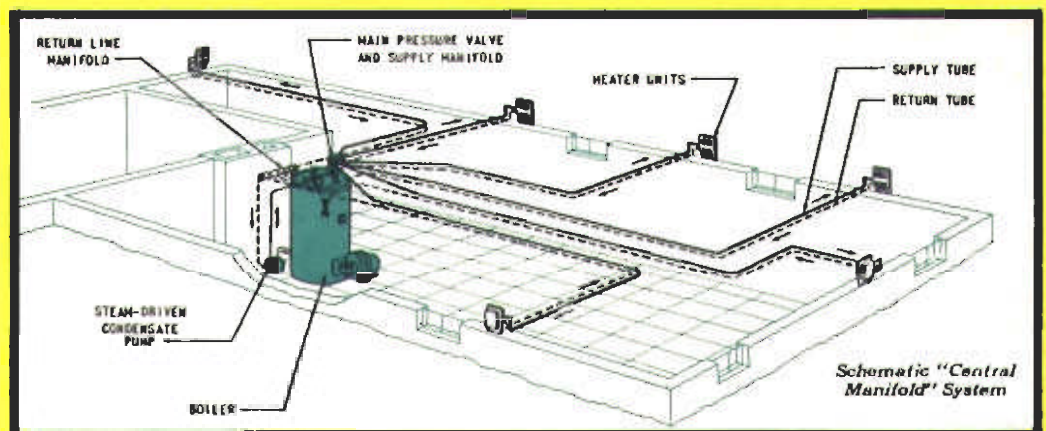
Conventional heating systems requiring ducts or rigid piping must have chases, framing headers or trimmers, or other provisions for concealment and accommodation. This adds to cost, and frequently weakens the structure or adversely affects most efficient plan arrangement.

The compact boiler needs space no larger than a closet, and can be located anywhere from basement to attic. With no problem of headroom, unnecessary building height is eliminated as an item of cost.

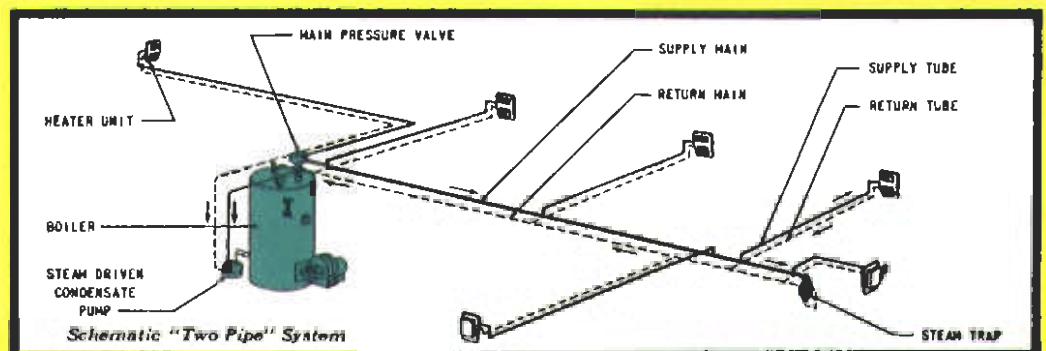
For new or old buildings, multi-storied or single floor, of any size or use, in all climates.

CENTRAL MANIFOLD SYSTEM

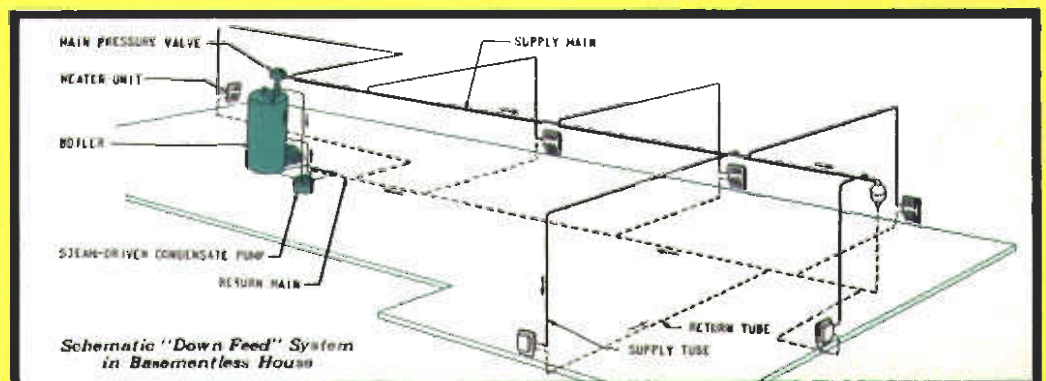
... Small compact buildings, with the boiler centrally located, normally use the Central Manifold System, in which individual supply tubes connect the boiler to each heater, and individual tubes return the condensate to the pump.



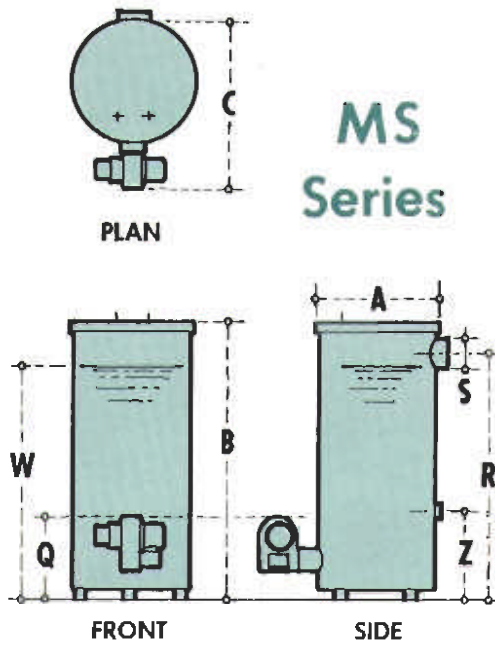
TWO PIPE SYSTEM ... Where the boiler is located near one end of a larger building, a Two Pipe System is frequently used. A steam main, usually a $\frac{3}{4}$ inch pipe, delivers steam to the heater supply tubes. A return main, usually a $\frac{1}{2}$ inch pipe, returns the condensate to the pump. The heaters are connected to the main with small tube branches.



DOWN FEED SYSTEM ... Piping layout for a typical slab construction basementless house, with steam supply pipes overhead and return pipes below the floor level. With this construction the return pump is depressed below the floor level. The Down Feed System may be of the two pipe type as shown, or it may be of the Central Manifold type, or a combination of both types.



SelectTemp GAS OR OIL-FIRED STEAM BOILERS



Oil-Fired Model MSO-140
Illustrated

OIL FIRED	114	140	180	240	320	400	500	750	1000
GAS FIRED	142	175	225	300	400	500	625	937	1250
Gross Btu Output—1000's	114	140	180	240	320	400	500	750	1000
Input Btu Rating—1000's	142	175	225	300	400	500	625	937	1250
Net Rating, Steam—Sq. Ft.	300	400	500	700	900	1100	1400	2100	3000
Oil Burner Capacity G.P.H.	1.0	1.25	1.75	2.25	3.0	3.5	4.5	7.0	9.0
Max. Steam Gauge Pressure	15	15	15	15	15	15	15	15	15
A—Boiler Diameter	21	23½	26	28½	31	33½	37	42½	49½
B—Boiler Height	57½	60½	64	66¼	70½	72¾	76¾	79	86¾
C—Boiler and Oil Burner	35½	38	40½	43	45½	48	51½
W—Water Line	51	54½	57¾	59	63	65	68	67¾	76½
S—Stack Diameter	7	7	7	8	9	9	10	10	12
R—Stack Outlet Above Floor	57½	54¾	58	60	64	66	68¾	68¾	77¾
Q—Oil Burner Top to Floor	19½	20	21	21	21	21¾	21¾	21¾	21¾
Z—Return Height	5½	16½	16¾	18	19½	5½	6¼	6¼	6¾

The use of steam as a heating medium eliminates the initial, operating and maintenance costs of circulating pumps required by forced hot water systems, or circulating fans required by warm air systems. Pounding noises or "hammer", hissing air vents, radiator traps, valve packing, and other problems usually associated with steam heating systems are eliminated.

BOILER is either oil or gas fired. Compact, well insulated, attractively jacketed, and skilfully engineered for economical operation and long life. Flexibility of PIPING allows

complete freedom in locating boiler and convector units. CONDENSATE PUMP is steam-driven. It returns condensate to the boiler automatically. HOT WATER COILS are built-in, instantaneous type, to supply year-round domestic hot water.

These boilers are designed and built to the highest standards of performance for the SelectTemp System. They are compact, very well insulated and highly efficient. The jacket is of heavy gage metal, with smooth baked enamel finish.

COST OF SelectTemp COMFORT

COST ANALYSIS—Comparison of cost of SelectTemp with other types of heating is misleading, since no other system combines such top comfort and operating economy. For budget purposes *only*, the initial cost of SelectTemp on new construction will compare favorably with radiant baseboard or other hot water or steam systems—and slightly higher than conventional forced warm air systems. It is appreciably less than other systems having more than single zone temperature control. SelectTemp is by far the best and most economical method of heating for modernization projects.

DESIGNING COSTS—Since SelectTemp systems do not require complicated planning of every part from the basement to farthest room and back again, the cost of designing and laying out working drawings for ducts, piping and other elements is reduced to a minimum.

INSTALLATION COST—The construction expense for framing, trenches, chases and other elements, combined with the prolonged time of job completion, increases the cost of installing most conventional heating systems. With SelectTemp, this is not a problem.

OPERATING COST—The cost of fuel for overheating or useless heating is avoided with the SelectTemp system. Heat is delivered when and where it is wanted, just as is electric lighting.

NEW HOMES SELL FASTER... REMODELING IS EASIER WITH

29i
1r

IRON FIREMAN SelectTemp[®]

SELF-MODULATING ZONE HEATING



the Revolutionary

CENTRAL HEATING SYSTEM

with a Thermostat in Every Room

SELECTEMP HEATING IS IDEAL FOR:

Homes, Motels, Hotels • Schools, Churches
Apartment Houses • Institutions
Office Buildings • Stores, Hospitals
Buildings of every type and size

There's Nothing Like

IRON FIREMAN *SelectTemp* HEATING

HERE'S a *revolutionary* new development in heating. It's so simple, so practical, brings such a new degree of indoor comfort, that many ask, "Why didn't someone invent SelecTemp years ago?" Engineered and manufactured by Iron Fireman, famous since 1923 for fine heating equipment . . . SelecTemp brings more comfort and economy *than any other heating system known*. SelecTemp accomplishes what heating engineers for years have tried to do. It provides a sensitive, dependable system of temperature control for *each room*, plus modulated, circulating heat, at a down-to-earth installation and operating cost.

A THERMOSTAT IN EVERY ROOM

This is the comfort-convenience that appeals to *everybody* — home buyers, home modernizers, the occupants and owners of all types of buildings. A thermostat in every room means *individual* heat control. At the same time — in the same home — you can keep it warm in some rooms, cool in others, tailored to individual comfort *throughout the house*.

FILTERED, CIRCULATING WARM AIR HEAT FROM STEAM

Steam heat? Hot water heat? Warm air heat? SelecTemp combines the finest features of all these reliable heating methods to achieve remarkable results. Low-pressure steam from a central boiler goes quietly and swiftly under its own power to each SelecTemp room unit. There it generates and circulates filtered warm air.

The same steam that supplies heat also operates the turbine which turns the circulating fan. No wiring or electricity is used, either for fans or thermostats.

YEAR-ROUND HOT WATER AT LOW COST

SelecTemp boilers are available with built-in water heating coils, eliminating need for separate water heaters. There is an abundant, dependable year-round supply of hot water — at very reasonable cost.

HELPS SELL NEW HOMES

SelecTemp heating appeals at once to prospective home buyers. Wives appreciate the practical need for individual heat control in every room. Husbands are impressed with its efficiency and its economy of operation. SelecTemp heating gives homes the outstanding *extra feature* that means *quick sales and profits*.

Read What These Prominent Builders Say About IRON FIREMAN SELECTEMP HEATING

CHARLES J. KOWALSKI, *President*, CHARLES J. KOWALSKI, INC.,
Contractors, Pittsburgh, Pennsylvania.

Last fall we installed an Iron Fireman SelecTemp heating system in the dwelling we built for the Pittsburgh Home Builders "Parade of Homes". We believe that the system tended to attract much attention to a home which has many outstanding features. During the course of the show we answered many, many inquiries about the heating, which we believe will result in additional SelecTemp installations in this area.

The dwelling was sold just after the close of the "Parade of Homes", and we are certain that the folks who purchased it were impressed with the type of heating system we had used.

SAMUEL BLOCK, *Partner*
Homeland Builders, Detroit, Michigan

Your Iron Fireman SelecTemp heating system which we installed in our 18-unit apartment building at 12122-12130 Sanford, in Detroit, has proved very efficient and economical to run.

We do not hesitate to recommend your system, as it has proved itself to be very satisfactory to us.

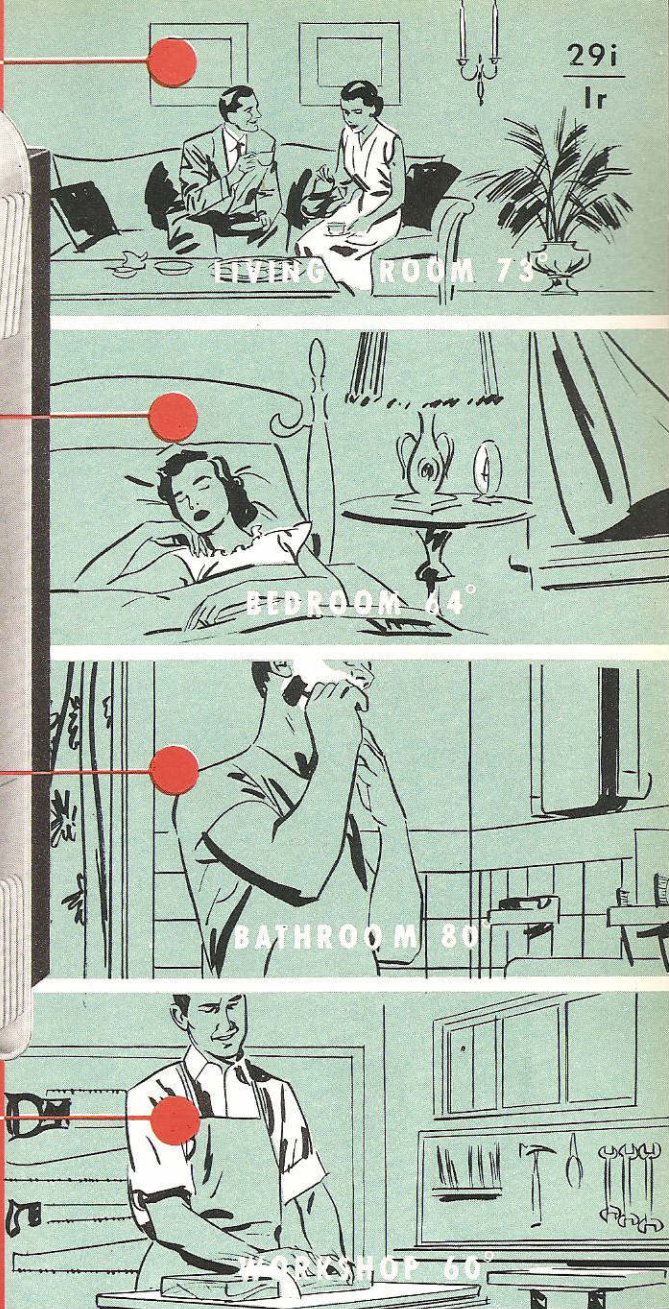
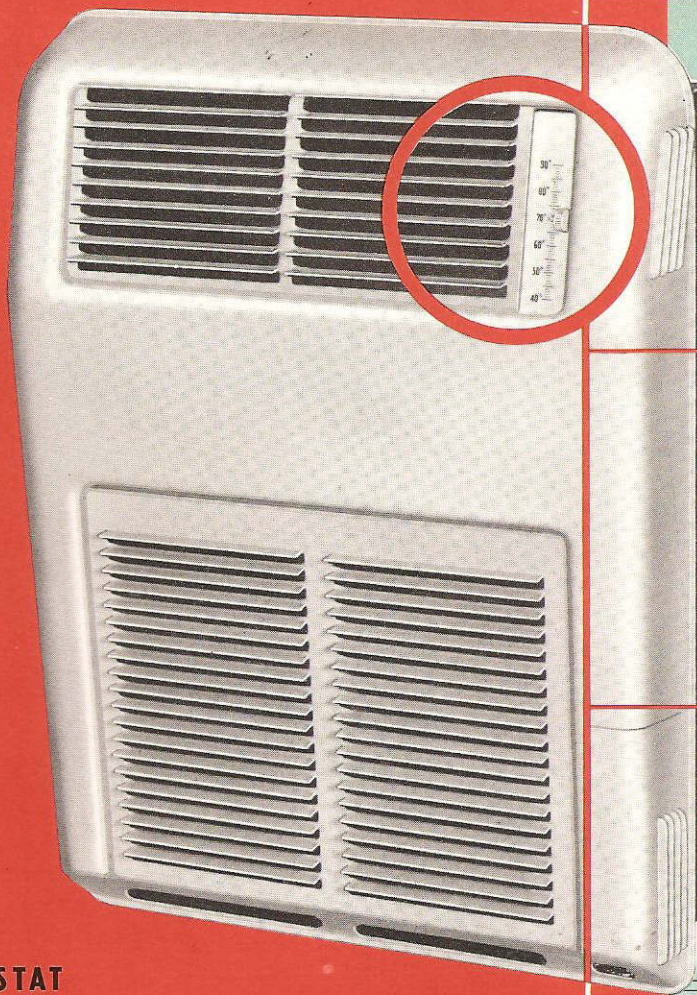
MR. N. LABRIERE, *President*
The Nelson LaBriere Company, LaBriere Homes, Canton, Ohio

We have been looking for a flexible system of heating equipment to properly heat our split level homes, with open planning and large glass areas. We have found it in your Iron Fireman "SelecTemp" system.

We obtain amazingly uniform heating, regardless of the task. Our customers like the individual thermostats on their units. We have found that fuel savings of 25% or more are common with your system.

The SelecTemp system is so flexible that we have to give very little thought to planning our homes in regard to the space necessary for installation of units and supply lines. This saves us considerable time in planning labor and materials.

We are always glad to show our customers the SelecTemp system, for we think it a great sales feature.



29i
1r

A THERMOSTAT

IN EACH **SelectTemp** UNIT

GIVES INDIVIDUAL ROOM CONTROL

Here's Why Home Buyers Like SELECTEMP Heating



- ▶ *Occupants can select the exact temperature they desire in each room.*
- ▶ *Steady uniform heating — modulated flow of warmed filtered air.*
- ▶ *Heat responds quickly to thermostat adjustment — temperature is maintained very accurately at selected level.*
- ▶ *Saves fuel — you can turn heat down in unoccupied rooms, but quickly reheat them.*
- ▶ *No electricity needed to operate heating units.*
- ▶ *Plenty of year-round hot water at very moderate cost.*
- ▶ *Attractive heating units — can be painted to match rooms; use no floor space; won't interfere with carpeting or furniture placement.*

And Here's How SelectTemp Heating Helps You Sell Houses

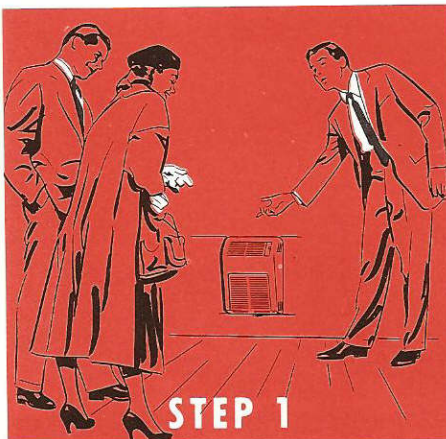


Make the 3-step **SelecTemp** Heating Demonstration

... A Short Cut to Closing Any Deal

YOU'LL FIND IT much easier to sell a home when you have installed SelecTemp and can actually *show* your prospects what an ultramodern heating system the house has. SelecTemp has wonderful demonstration value. The way it delivers filtered warm air, smoothly and steadily, is a revelation. And it gets equally warm response from prospective home buyers.

(If you yourself would like to see how SelecTemp heating operates, ask your nearest Iron Fireman dealer for a demonstration . . . in your own office if you wish.)



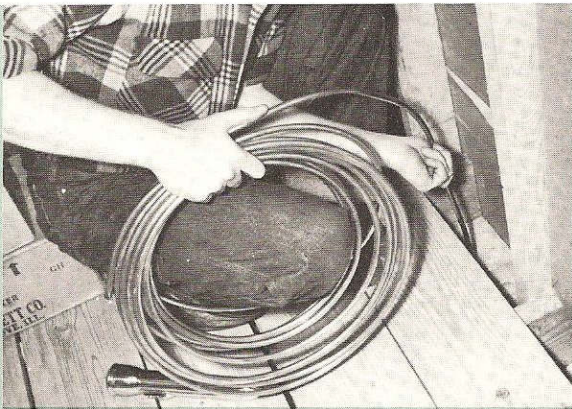
Explain SelecTemp heating advantages to prospective buyers — the thermostat in every room, modulated flow of filtered warm air, low fuel and electric bills, and other advantages mentioned on page 3.



Ask home buyer to set thermostat on the SelecTemp unit so he can see how easily this is done. Explain how home owners can turn heat down in unused rooms — yet reheat them quickly to the temperature desired.



Have him note how quickly the unit responds to the higher temperature setting. Also have the prospective home buyer feel the filtered warm air smoothly flowing from the upper SelecTemp grille.



Installation is *Fast and Easy* Whether You're Building or Remodeling

SelecTemp heating is almost as easy to install in an older home you're remodeling as in a new one. SelecTemp piping is as easy to run as electric wiring. Above, a mechanic snakes the copper tubing down through a wall on a remodeling job. Unlike "hard" piping, the flexible copper tubing can be snaked into the wall for most direct runs, with minimum of cutting and fitting.

Flexible copper tubing of only $\frac{1}{4}$ inch I.D. carries steam to individual room heater units. Return lines are $\frac{1}{8}$ inch I.D. Tubing is easily bent by hand for streamlining around obstructions.

Extra headroom is not required for ducts or pipes, which often saves on building costs. Small size of tubing makes heat losses from piping negligible.

NO OTHER HEATING SYSTEM
OFFERS SO MANY ADVANTAGES AS

IRON FIREMAN®

SelectTemp®

Just compare these advantages of Iron Fireman SelectTemp heating with those offered by any other system — at any price — and you'll agree that this unique heating system sets an entirely new and better standard of home heating comfort . . . at minimum cost.

THERMOSTAT IN EVERY ROOM Temperatures can be varied in every room to fit the "activity plan" and personal preference of the occupants.

MODULATED HEAT Both temperature and volume of air are automatically modulated, as required to offset heat loss from room.

FILTERED CIRCULATED AIR Individual room air circulation prevents transmission of odors or bacteria from other rooms. Air is cleaned by a spun glass filter in each unit.

BOILER LOCATION Boiler can be placed in any desired location, with proper distribution of heat to every room. Boilers with built-in, year-round domestic hot water coils available. Fuels: Gas, oil or coal.

LOW POWER COST No electricity required to operate circulating fans. Non-electric thermostats.

LOW INITIAL COST Easily installed in either new or old construction. Small soft copper tubing ($\frac{1}{4}$ inch I.D.) carries steam to individual room heater units. Return lines are $\frac{1}{8}$ inch I.D. Substantial savings in installation costs are the result.

LOW FUEL COST Temperature easily reduced in unused rooms. Wasteful, uncomfortable overheating is entirely eliminated.

AUTOMATICALLY BALANCED No special adjustments of dampers, valves or orifices required to balance heating system. Each unit continuously regulates heat needed for each room. Automatically compensates for external heat sources such as fireplace or solar heat, without affecting temperatures of other rooms.

All These — and YEAR-ROUND HOT WATER TOO!

. . . economically supplied by coils built into the boiler

AND IT'S TODAY'S BIGGEST HEATING VALUE

INITIAL COST COMPARES FAVORABLY Because SelectTemp heating offers so many *exclusive* benefits, in many ways it actually is *above* comparison with conventional heating systems. The initial *cost* of SelectTemp on new construction, while somewhat higher than conventional forced warm air systems, compares favorably with baseboard-or other hot water or steam systems. And it costs *far less* than other systems which provide modern zone control of temperature.

LOWER DESIGNING COST With SelectTemp systems, the cost of designing and laying out working drawings for ducts, piping and other elements is reduced to a minimum.

LOWER INSTALLATION COST The cost of installing most conventional heating systems is increased by the construction expense for framing, trenches, chases and other elements — plus the prolonged time of job completion. SelectTemp systems make this extra construction time and expense unnecessary.

WHY ARCHITECTS SPECIFY SELECTEMP HEATING FOR EVERY SIZE AND TYPE OF BUILDING

The SelectTemp system can be installed profitably in very moderately priced homes, as well as in more expensive homes, because SelectTemp is such a good sales feature. It can be installed in homes with or without basements, including those of slab construction.

OFFICE AND BUSINESS BUILDINGS SelectTemp appeals to owners of large commercial buildings because it makes possible important fuel economies, and substantial reductions in steam consumption where district steam is used. Heat can be furnished only where needed — and only in the amount required. The fan in each room unit is operated by a small steam turbine, so no electric wiring is required.

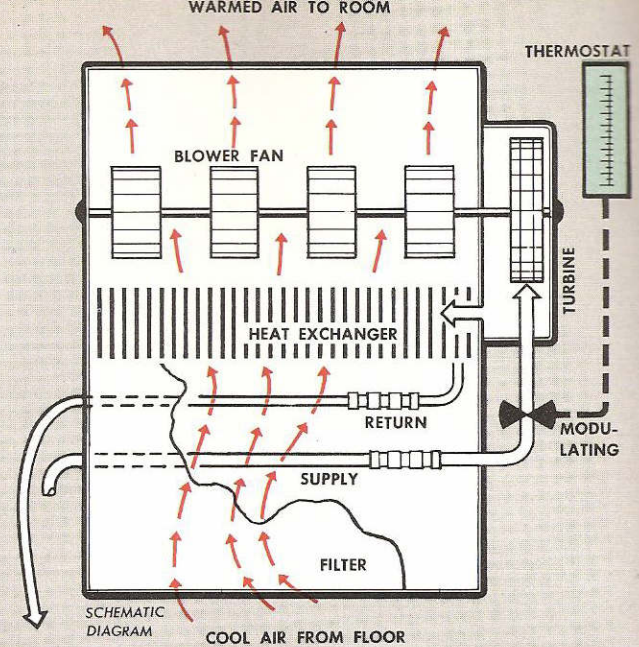
HOTELS, MOTELS, APARTMENTS, SCHOOLS, CHURCHES AND HOSPITALS In motels, hotels and apartment houses SelectTemp heating comfort attracts guests and tenants — yet saves fuel for landlords. In hospitals and schools, the speedy accurate temperature control of the SelectTemp unit is important to the health and comfort of patients and students. Air in each room is independently circulated and filtered. For all large buildings, SelectTemp offers substantial fuel economies because temperature in unused rooms can be kept low — yet the rooms can be quickly reheated.

SelectTemp[®]

OPERATES SIMPLY

... with minimum maintenance

The key to the comfort and economy of the SelectTemp heating system is the fact that each separate heater unit is *individually* controlled. Each unit delivers a flow of filtered warm air — in the *exact* amount needed to maintain the temperature selected for the location. Here is how simply the SelectTemp unit operates:



STEAM SUPPLY — Each SelectTemp heater unit receives its own supply of steam through a $\frac{1}{4}$ " copper tube. Boiler can be placed in the most convenient location without affecting steam supply to individual room units.

THERMOSTAT — Each SelectTemp unit is separately controlled by its own non-electric thermostat through a temperature range of 40° to 90°F. The modulating valve controls the flow of steam that operates the turbine and air-circulating fan, thus regulating both the fan speed and the heat output.

TURBINE AND FAN — Mounted on a single stainless steel shaft, the turbine and fan operate smoothly and quietly.

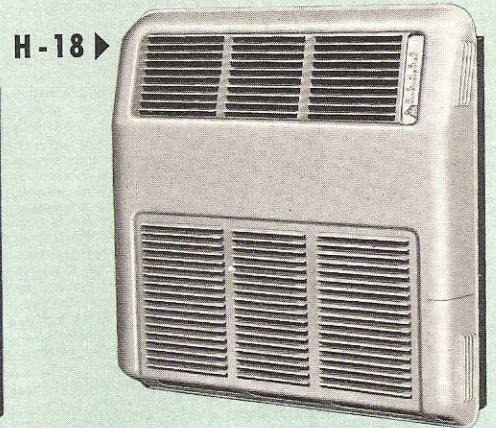
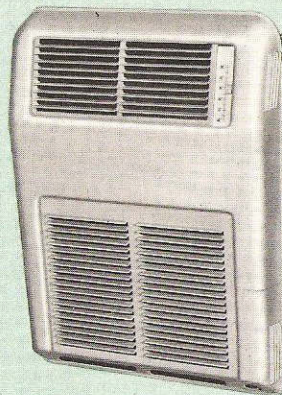
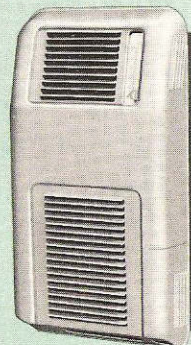
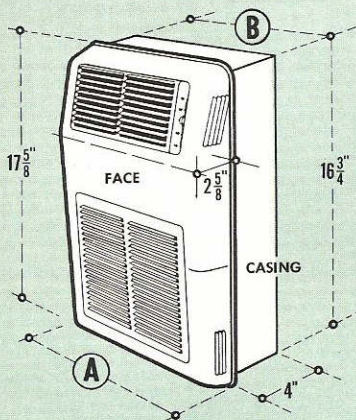
No lubrication or service is required. The speed of the fan varies according to the heat output demanded by the thermostat. SelectTemp eliminates "on-and-off" cycles that result in "cold 70°" stratification.

HEAT EXCHANGER — Steam travels from the turbine chamber to a highly efficient automotive-type copper heat exchanger, where it heats the circulating air.

FILTERED AIR — All circulated air is drawn in through the lower louvers, travels through the removable spun glass filter and is warmed by the heat exchanger. The fan then delivers a gently modulated flow of warmed, clean air to the room through adjustable diffusing louvers near top of unit.

Small and Compact with 3 sizes to choose from

Small unobtrusive recessed wall units are mounted in wall stud space. They extend into the room only $2\frac{5}{8}$ inches, are less than 18 inches high. They do not interfere with modern wall-to-wall carpeting or furniture arrangement. The attractive louvered front is easily removable — may be refinished to match decorating schemes or left with its own neutral finish.

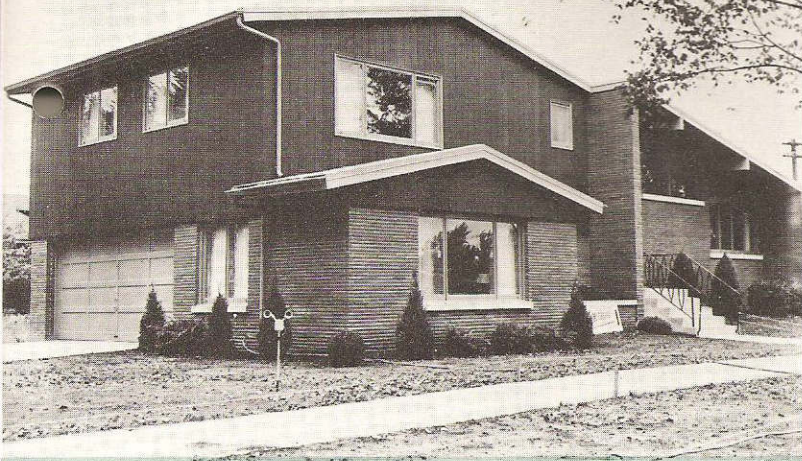


	H-6	H-12	H-18
Max. Btu delivery	6000	12000	18000
Min. Btu delivery	300	600	900
A — Face width	9 $\frac{1}{4}$ "	13 $\frac{3}{8}$ "	18"
B — Casing width	6 $\frac{1}{4}$ "	10 $\frac{1}{2}$ "	14 $\frac{7}{8}$ "
Weight of unit	13 lbs.	18 lbs.	22 lbs.
Air volume CFM	60	120	180

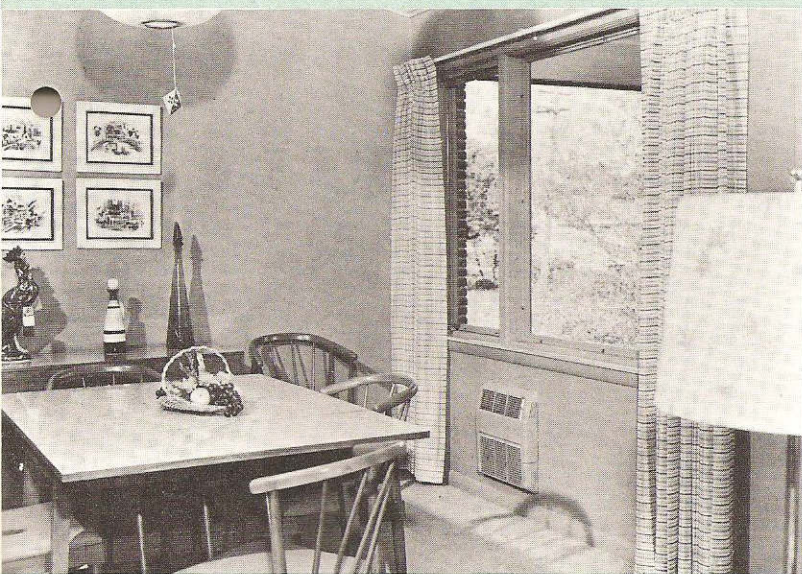
SelectTemp Boilers are Gas or Oil-Fired

Built to highest performance standards, SelectTemp boilers are compact, well-insulated, skillfully engineered for economical operation and long life. Built-in hot water coils furnish instantaneous hot water all-year-round.

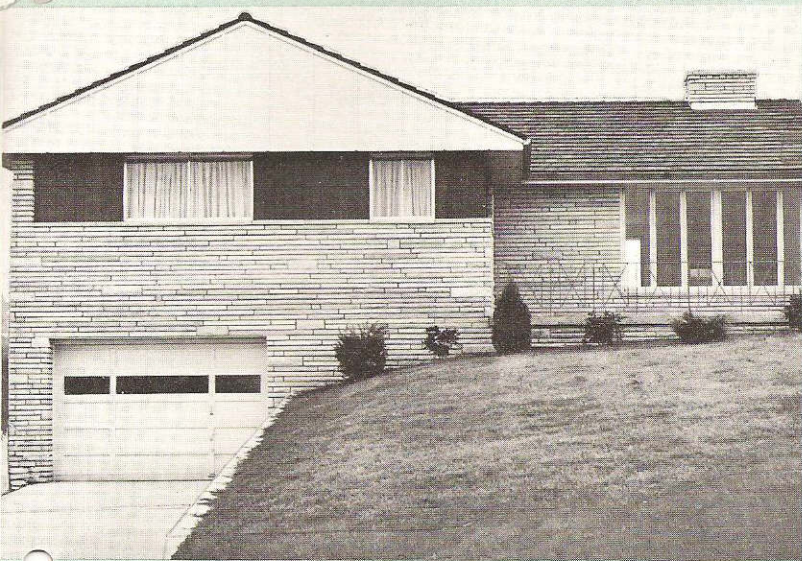
CLEVELAND This custom-built SelecTemp heated house was displayed by the builder for two days, attracting 5,000 visitors. Builder and SelecTemp dealer ran tie-in newspaper advertisements.



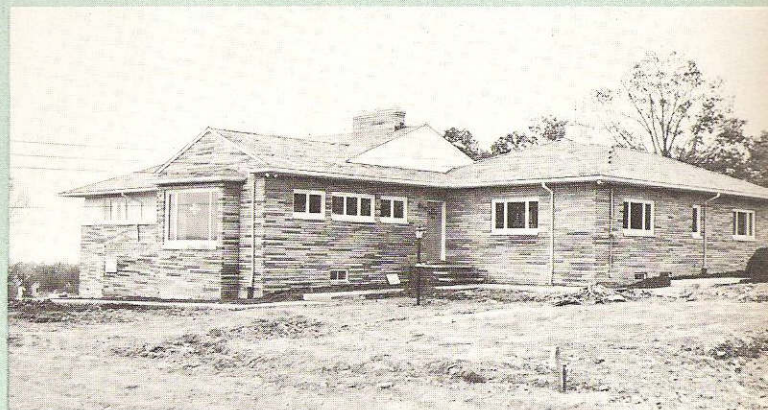
LA GRANGE, ILL. This model home was chosen "Home-of-the-Month" by *Suburban Life*, a newspaper circulated in the mid-west. Much of the appeal of this home is due to its SelecTemp heating system.



LA GRANGE, ILL. Interior view shows attractive, unobtrusive SelecTemp unit. Units can be painted to match color schemes — and do not interfere with furniture placement or wall-to-wall carpeting.

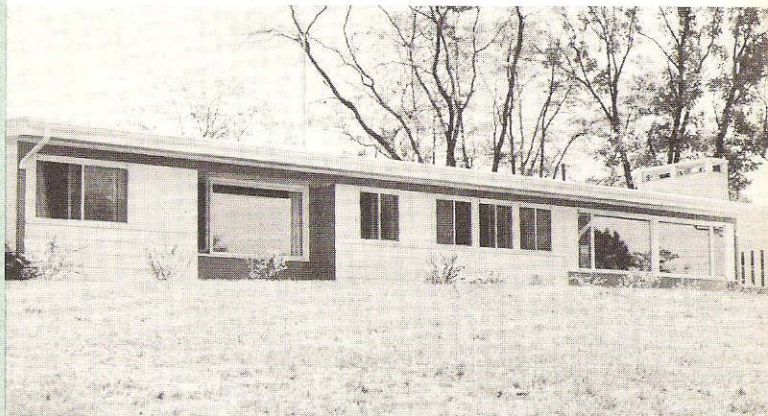


PITTSBURGH SelecTemp heating was featured in this model home, on display during the "Parade of Homes". After seeing the SelecTemp system, several visitors ordered SelecTemp heating for their homes.



IRON FIREMAN® SelecTemp® Installations "Stole the Show" in these Model Homes

BUILDERS EVERYWHERE have found SelecTemp heating a sure-fire way to beat competition in the new-home market. SelecTemp systems tie in with the trend to give greater value in new homes by including "extra" features. And a SelecTemp installation often makes the difference between a quick profitable sale and a slow unprofitable one.



MIDDLETOWN, O. The SelecTemp installation in another *Better Homes & Gardens* "Home for All America" aroused much interest and resulted in a number of SelecTemp installations in this area.

IRON FIREMAN® SelectTemp®

National Advertising

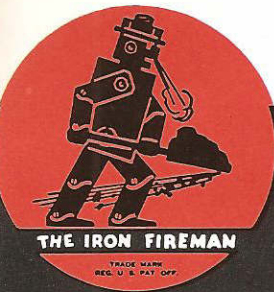
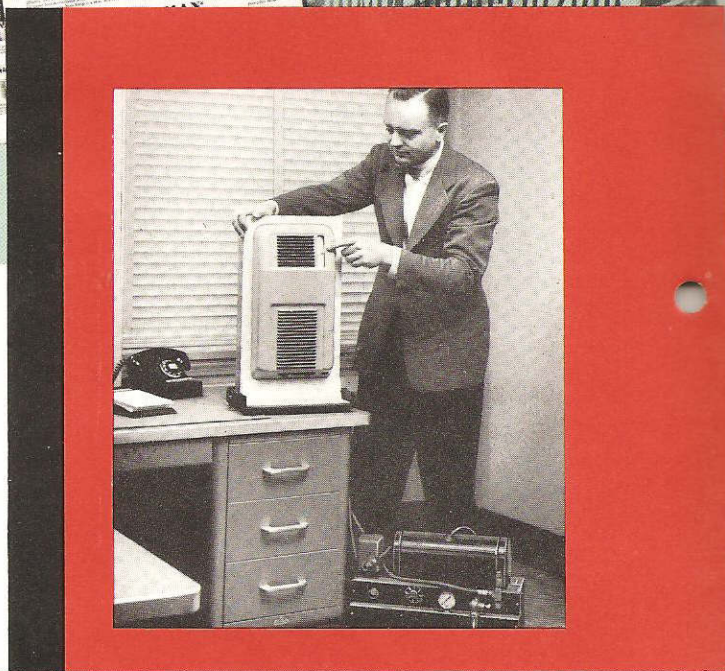
Pre Sells
Your Prospects

Your prospects and customers are reading about the revolutionary new SelectTemp heating system. For a steady, planned publicity and national advertising campaign is keeping Iron Fireman SelectTemp in the public eye. Advertisements are appearing in such leading magazines as *Saturday Evening Post*, *Newsweek*, *Better Homes and Gardens*, *House and Garden*, *House Beautiful*, *Living*, *Small Homes Guide*, *Popular Science*, *Popular Mechanics*, *Home Modernizing* and others . . . making the Iron Fireman SelectTemp system known from coast-to-coast for the finest in heating comfort and convenience.



Get a FREE Demonstration of SelectTemp

Ask Your Iron Fireman Dealer to Demonstrate SelectTemp Today! In your own office, using our portable demonstration unit, it takes only a few minutes to show you SelectTemp in operation. See your Iron Fireman dealer or write direct. There's no obligation.



IRON FIREMAN® SelectTemp®

Iron Fireman Manufacturing Company
CLEVELAND 11, OHIO