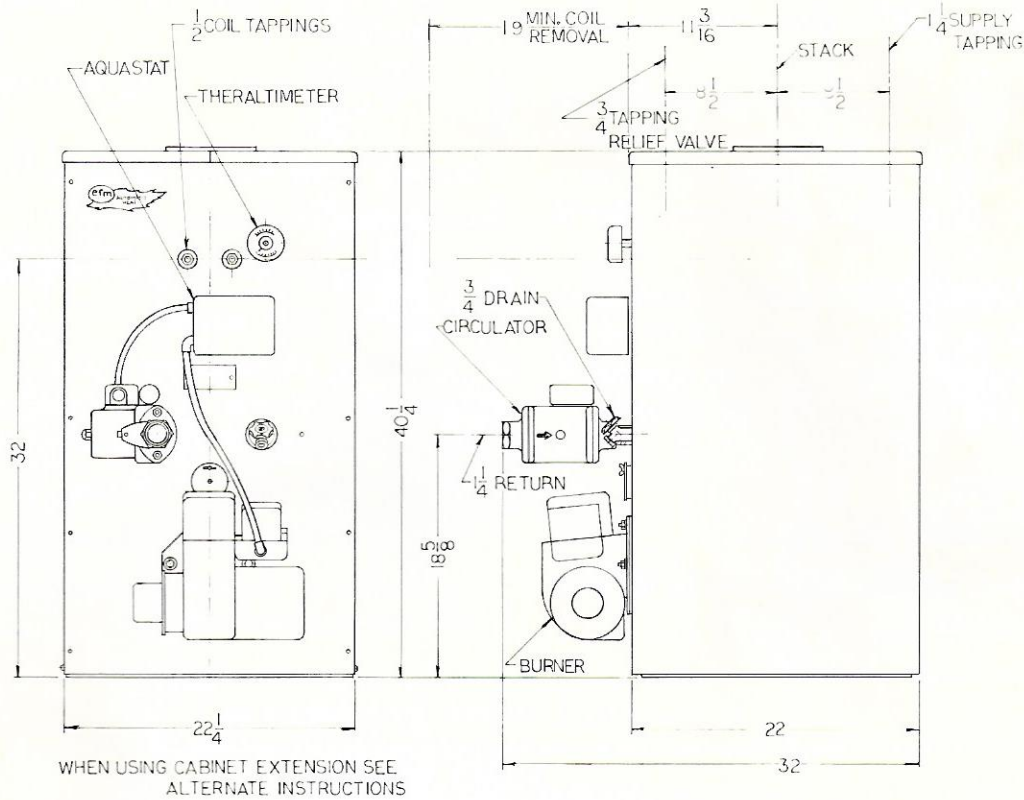




The Finest in
**AUTOMATIC
HEAT**

INSTALLATION INSTRUCTIONS GEMACO SERIES BOILER BURNER UNITS

MODELS VT635 VT890 VT1140
(FOR HOT WATER HEATING SYSTEMS)



SPECIFICATIONS

GEMACO Model	VT635	VT890	VT1140
Gross Output Btuh	110,500	154,900	198,400
*Net Output Btuh	95,250	133,000	171,000
**Net Output Sq. Ft.	635	890	1140
Nozzle Size GPH	1.00-70°S	1.35-70°S	1.75-70°S
Burner	AF56XN	AF56XO	AF56XO
No. of Tubes	14	18	24
Smoke Outlet Dia.	7	7	7
Water Capacity Gal.	20.5	20	19.5
Chimney Size	8" x 8" x 20' High		
Shipping Weight	450	475	500

*Net output ratings are based on installed radiation of sufficient quantity to serve the requirements of the building and nothing need be added for normal piping and pickup. Water rating is based on a piping and pickup allowance of 13%.

**Net water based on 170° boiler water with heat emission of 150 BTUH per square foot. Electric Furnace-Man should be consulted before selecting a boiler having unusual piping and pickup factors.

Setting Boiler

Place boiler on a solid level foundation close to the chimney.

Be sure to allow adequate space at front of unit to service burner and for removal of coil.

Air for Combustion and Ventilation

Be certain adequate facilities are available to provide air for satisfactory combustion and ventilation.

For installation in confined areas provide two openings, one near the floor and one near the ceiling. Each opening to interior space must have a minimum free area of 150 sq. inches per gallon of oil burned per hour.

Each opening to outdoors must have a minimum free area of 50 sq. inches per gallon of oil burned per hour and should only be used when openings to interior spaces are not permissible or sufficient.

Testing and Piping

See recommended piping diagram.

Plug all open tappings and test boiler for leaks at 30 P.S.I. pressure.

Drain boiler, remove plugs from tappings to be used.

Pipe boiler to heating system in accordance with recommended practices in order to assure satisfactory heating performance.

Controls and Wiring

All wiring shall be done in accordance with the National Electric Code and all applicable local requirements.

For recommended wiring see diagram.

Cleaning Boiler Heating Surfaces

Remove cabinet top panels.

Remove smoke pipe and flue collector.

Remove tube spinners.

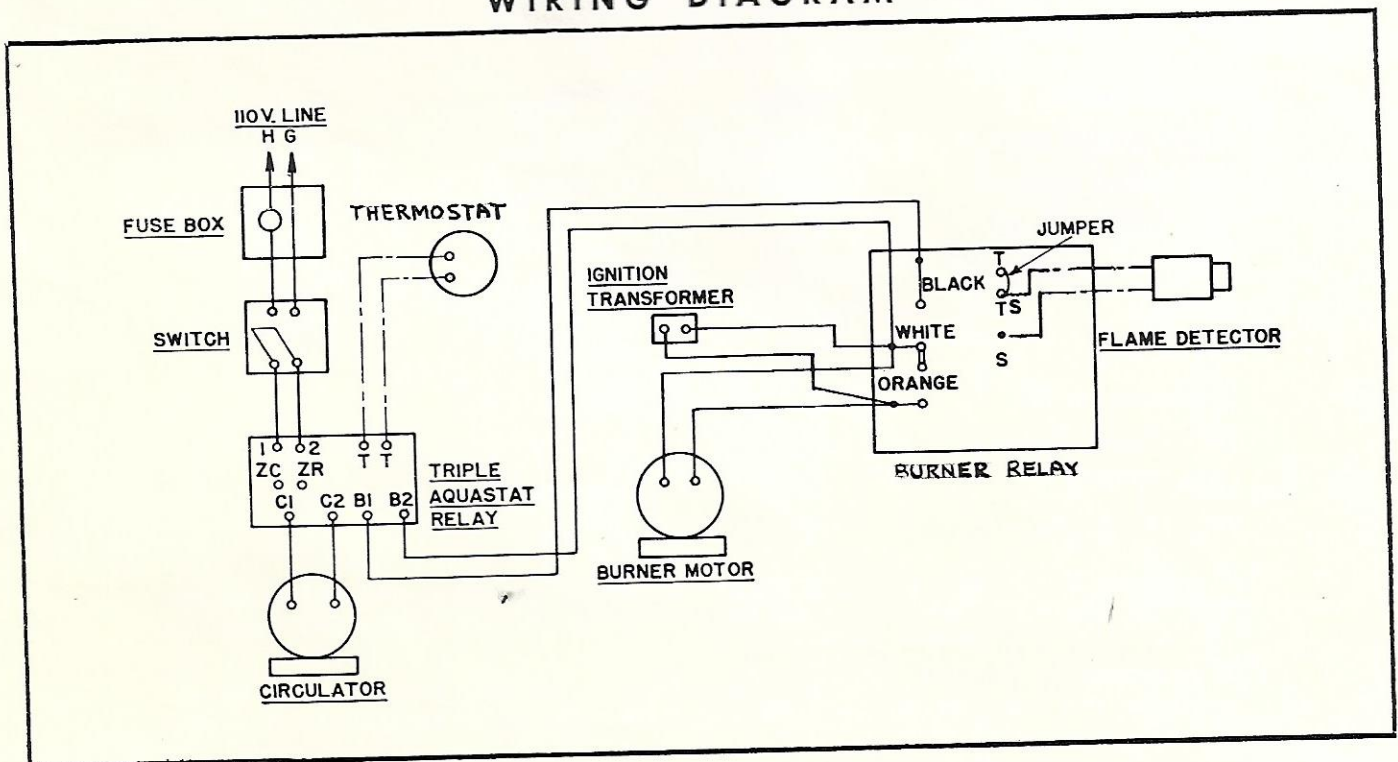
Remove all scale and soot from surfaces by means of brush and vacuum cleaning. Precaution should be taken not to damage combustion chamber.

Clean flue pipe and collector.

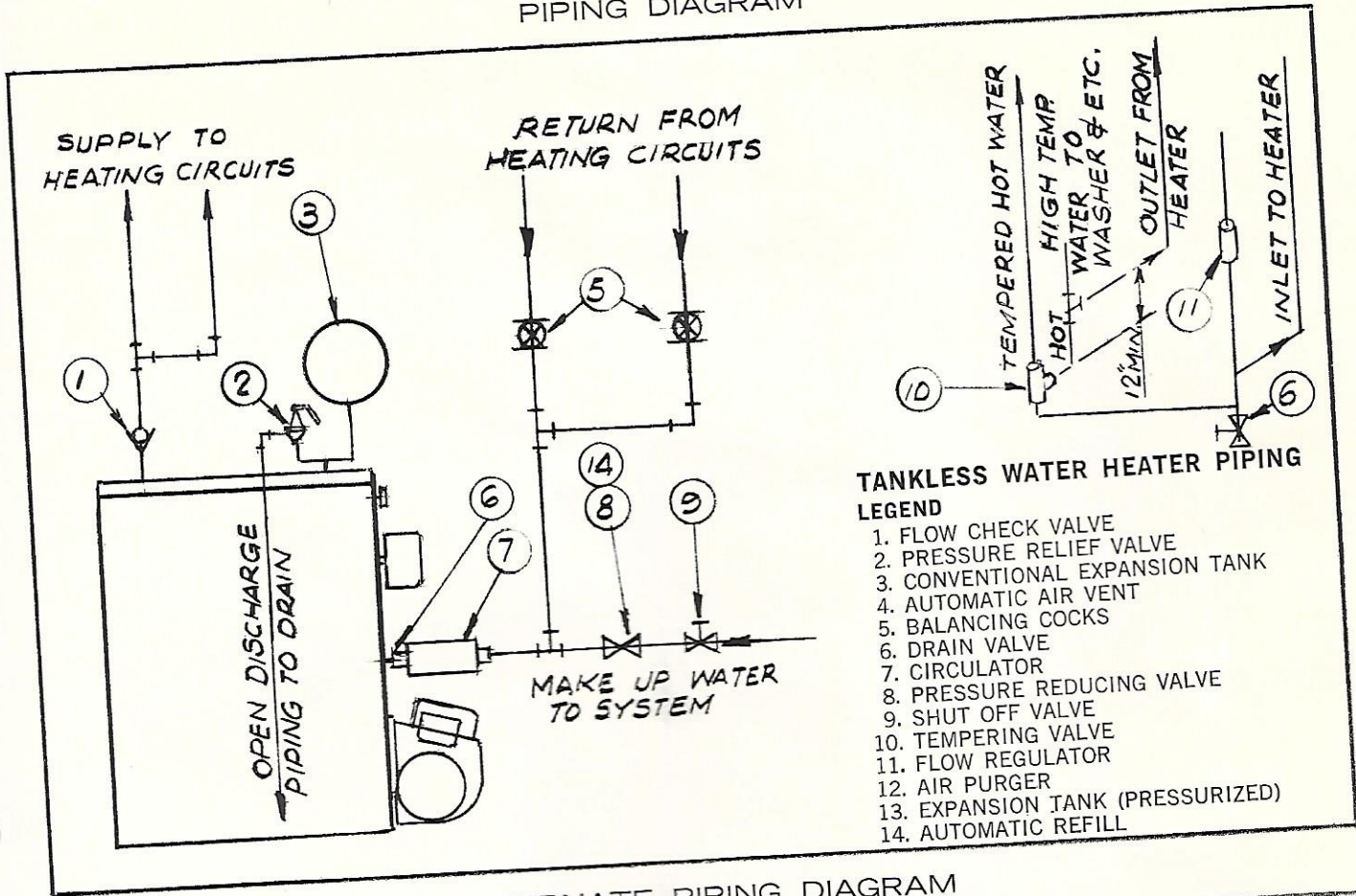
Install new flue collector gasket, if necessary.

Replace all parts and clean cabinet surface and area around boiler.

WIRING DIAGRAM



PIPING DIAGRAM



ALTERNATE PIPING DIAGRAM

