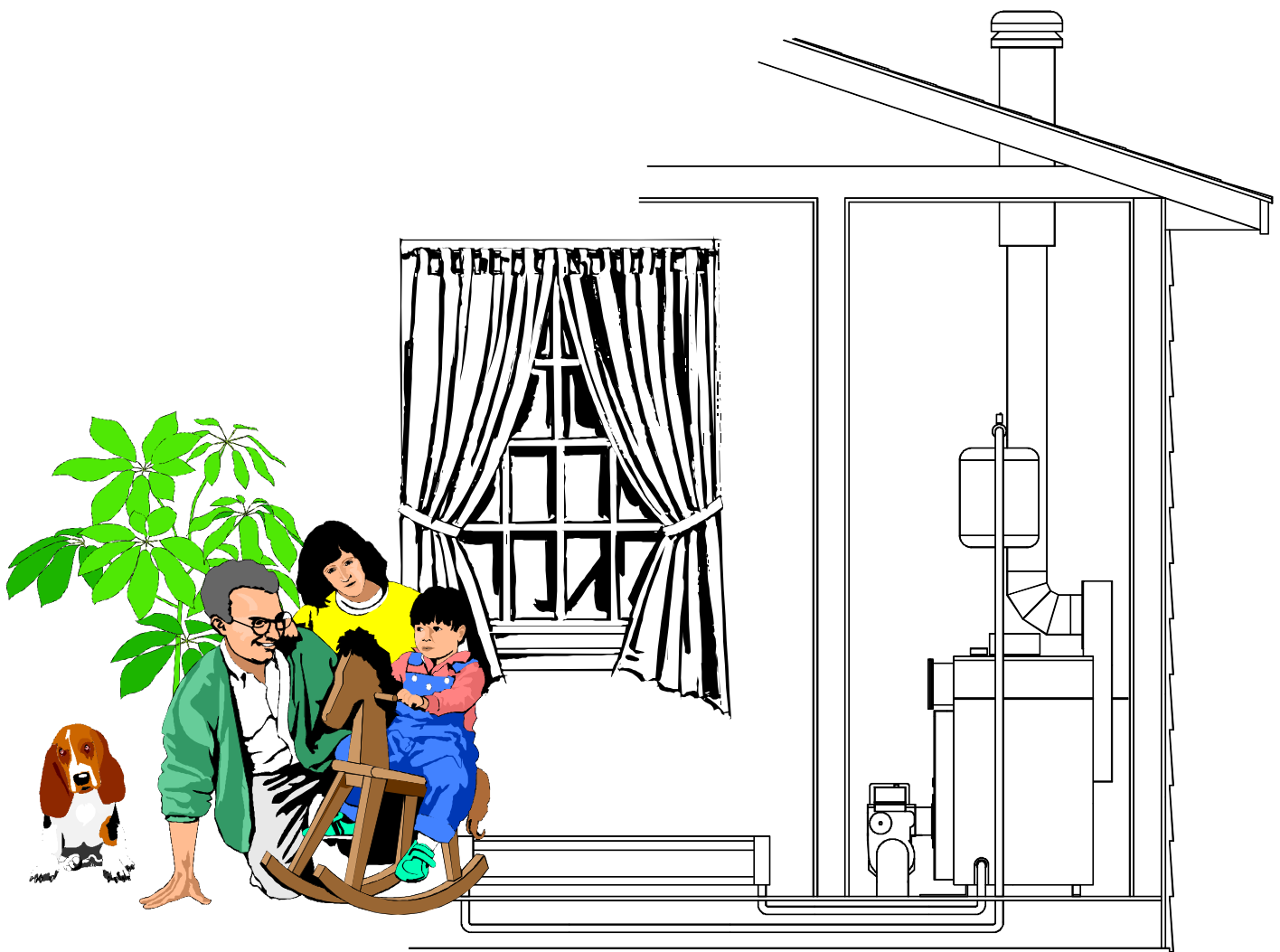


AXEMAN-ANDERSON

Hot Water Boilers for Mobile & Modular Homes

*Tested per U.L. Standards by
PFS Testing Laboratories for HUD Approval*



Manufactured by
Axeman-Anderson Company
Builders of High Quality, Highly-Efficient Boilers, since 1944

74MPO Series Hot Water Boilers

Natural Gas, Propane or Oil Fired

The same model size can be easily changed from natural to propane or from propane to natural gas with only the change of an orifice. To change to oil fired, only the exchange of the power burner is necessary.

New Lifetime Warranty

Axeman-Anderson stands behind every boiler with a non-prorated, lifetime warranty on the entire pressure vessel.

No Special Base Required

The boiler design, being of wet-base construction, makes installation possible on combustible flooring.

I.B.R. Rated & D.O.E. Tested



Each model boiler has been fully tested and rated, meeting or exceeding the requirements of the I.B.R. Code and the Department of Energy A.F.U.E. requirements.

Wet Base Horizontal Construction

Horizontal tube boilers are not only more efficient, they are easier to service. The combustion area is completely surrounded by a water-backed heating surface, thus increasing heat absorption and efficiency resulting in lower fuel costs.

Low Maintenance

Only minimal annual maintenance is required. Convenient front access makes service quick & easy. Isolating valves on circulators eliminates the need to drain the system, making replacement fast & simple.

A.S.M.E. Construction



Each boiler is built to meet the requirements of the A.S.M.E. Code. Every unit is factory inspected and carries the A.S.M.E. stamp of approval with a registration number.

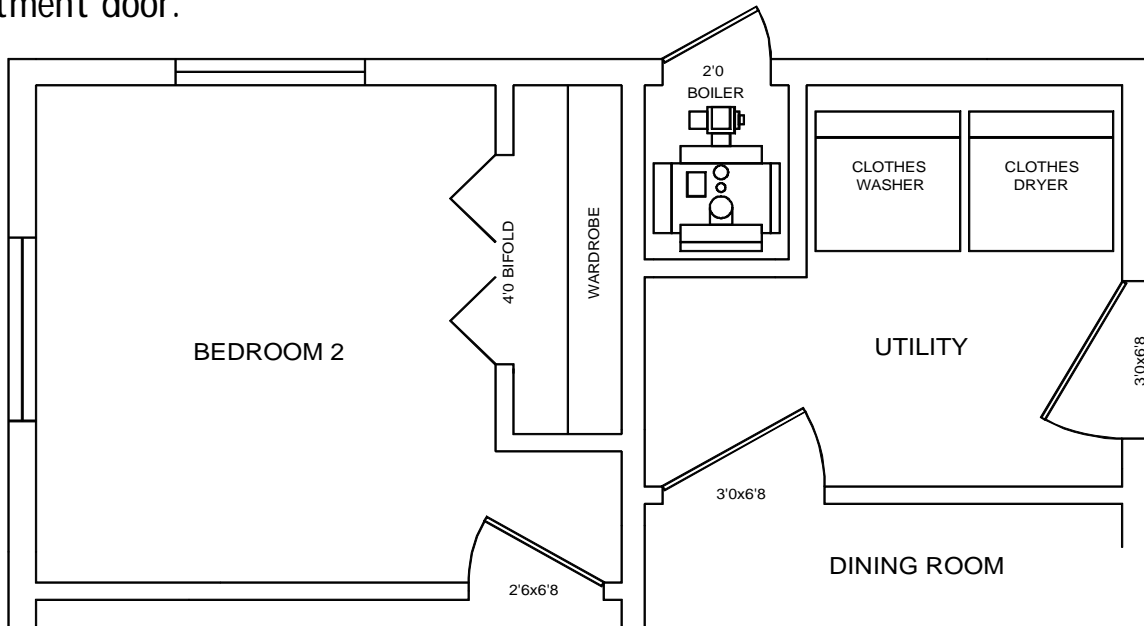
Tankless Water Heater

Optional 4-gallon per minute heating coil produces hot water for most domestic needs. Actual output will depend on boiler b.t.u. output. Coil attaches with nuts & bolts to flange on boiler, eliminating studs.

Available for Two Types of Installa-

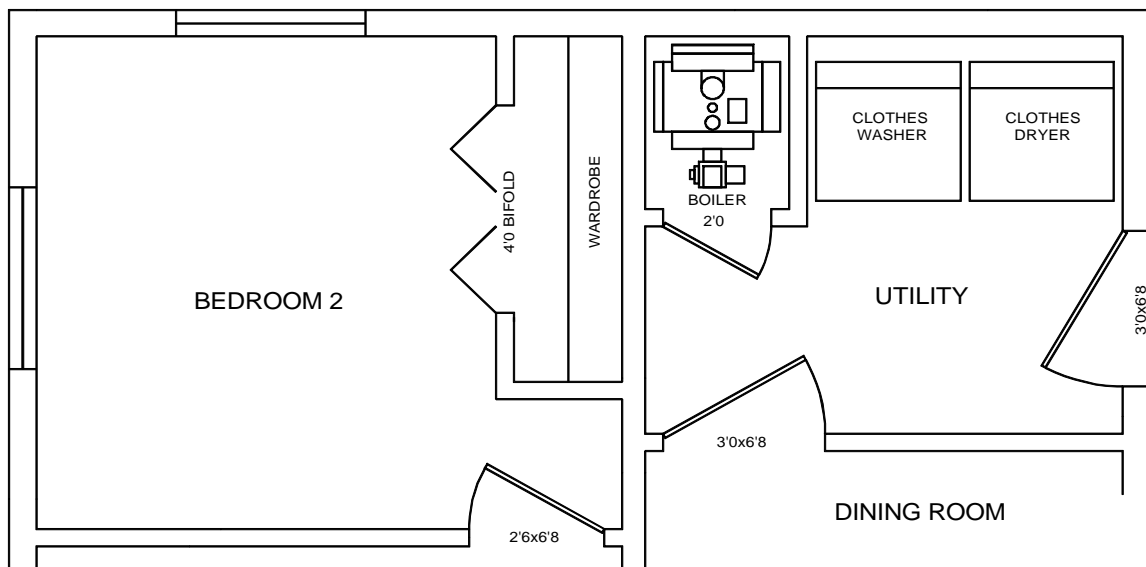
Outside Compartment Installation

The 74MPO-S units are designed and listed for installation in a compartment accessible only from the outside. Combustion air is supplied from the roof jack and a vent in the compartment door.

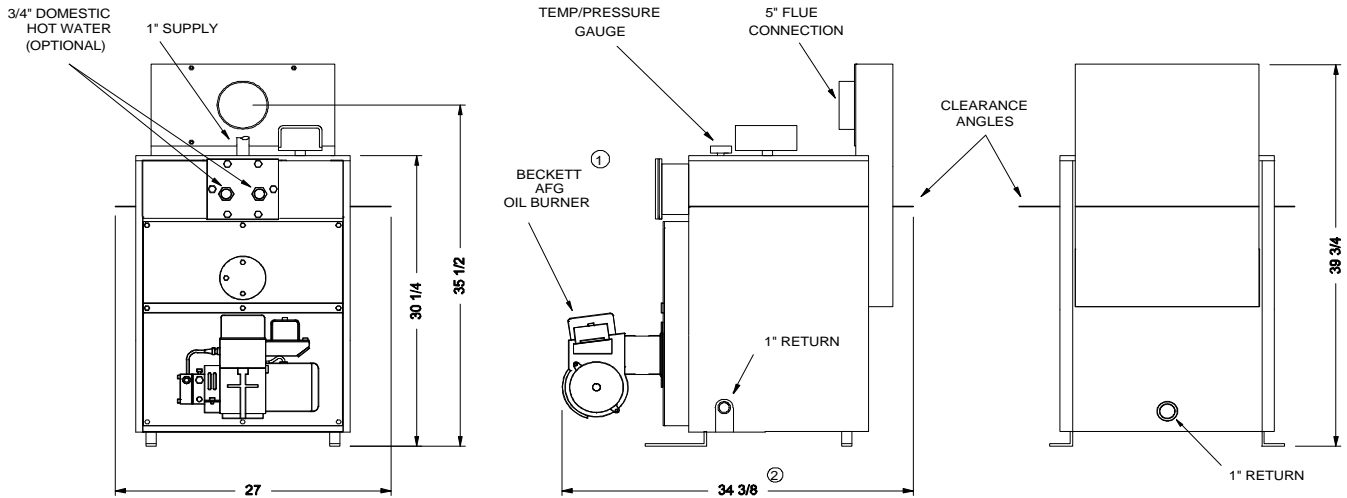


Inside Compartment Installation

The 74MPO-DVS units are designed and listed for installation in a compartment accessible from within the home. Combustion air is ducted directly to the combustion air intake on the burner.



74MPO-S DIMENSIONS



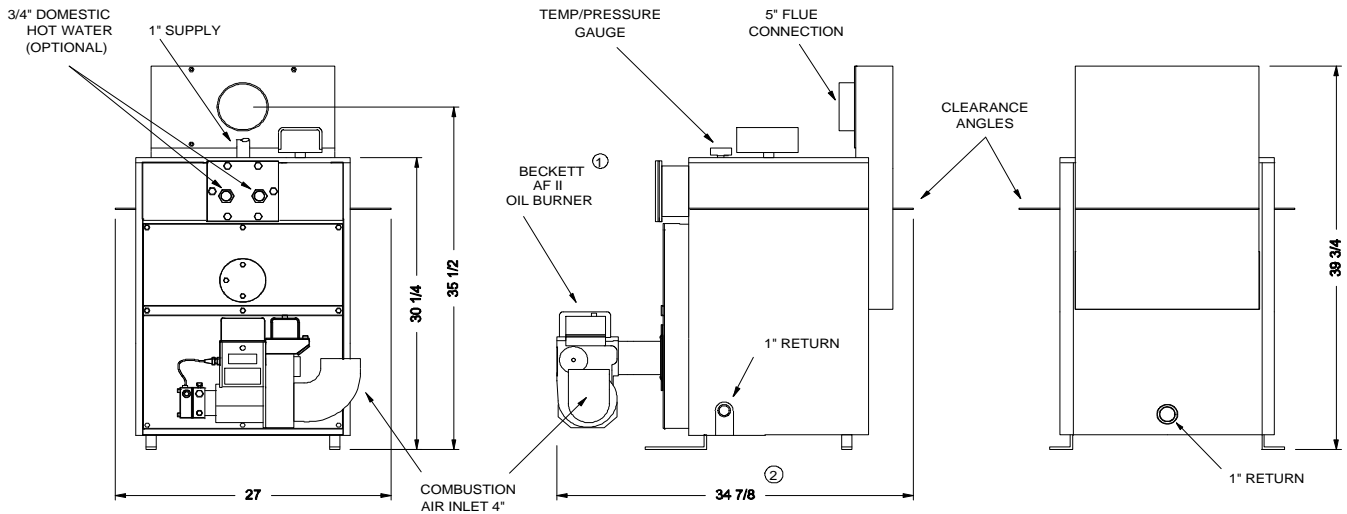
1. CARLIN G3B GAS BURNER WHEN GAS FIRED.

2. 38-3/4\"/>

74MPO-S SPECIFICATIONS

FUEL	MODEL NO.	D.O.E. HEATING CAPACITY M.B.H.	NET I.B.R. RATING WATER M.B.H.	I.B.R. INPUT	NOZZLE SIZE	D.O.E. A.F.U.E. %	HEATING SURFACE SQ. FT.	WATER CONTENT GAL.	OPTIONAL DOMESTIC COIL G.P.M.
GAS	74MPOS-G	92	80	109 M.B.H.	NA	82.7	16	14.5	4.0
GAS	74MPOSH-G	117	102	136 M.B.H.	NA	82.5	16	14.5	4.0
OIL	74MPOS-O	92	80	.75 G.P.H.	.75 80 B	84.2	16	14.5	4.0
OIL	74MPOSH-O	117	102	.95 G.P.H.	1.00 80 B	82.7	16	14.5	4.0

74MPO-DVS DIMENSIONS



1. CARLIN G3B GAS BURNER WHEN GAS FIRED.

2. 38-3/4\"/>

74MPO-DVS SPECIFICATIONS

FUEL	MODEL NO.	D.O.E. HEATING CAPACITY M.B.H.	NET I.B.R. RATING WATER M.B.H.	I.B.R. INPUT	NOZZLE SIZE	D.O.E. A.F.U.E. %	HEATING SURFACE SQ. FT.	WATER CONTENT GAL.	OPTIONAL DOMESTIC COIL G.P.M.
GAS	74MPODVS-G	92	80	109 M.B.H.	NA	82.7	16	14.5	4.0
GAS	74MPODVSH-G	117	102	136 M.B.H.	NA	82.5	16	14.5	4.0
OIL	74MPODVS-O	92	80	.75 G.P.H.	.65 70 B	84.2	16	14.5	4.0
OIL	74MPODVSH-O	117	102	.95 G.P.H.	.85 60 B	82.7	16	14.5	4.0