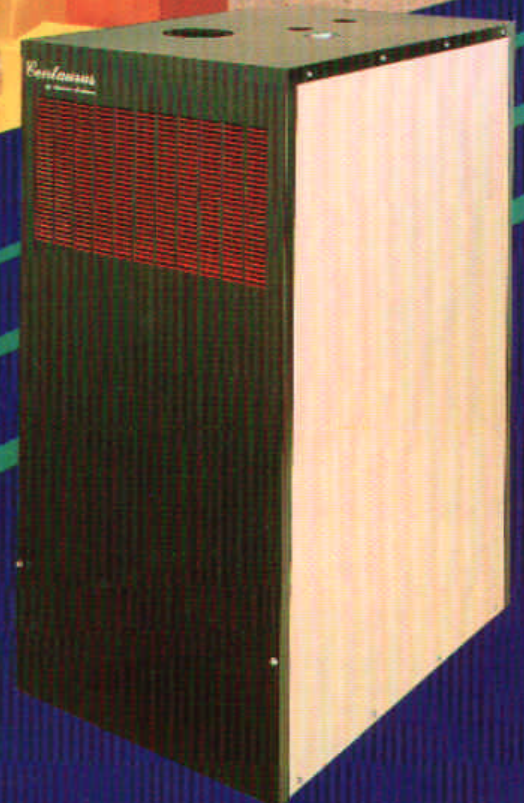


Centaurus

by Axeman ~ Anderson



Keep Warmth and
Togetherness in your Home
with the **Centaurus**
Complete Comfort System



CENTAURUS Combination Space and Domestic Hot Water Comfort System Model CN -

■ HIGH EFFICIENCY:

Saves fuel with exclusive "on demand" operating system, providing economical, energy saving heat and hot water.

■ COMPLETE SYSTEM:

Completely wired, assembled and jacketed in a compact, space saving unit.
Ready to install with easily accessible controls and piping.

■ LOW MAINTENANCE:

Virtually maintenance free, delivering consistent, reliable heat and hot water quietly and efficiently year after year.

■ HIGHEST QUALITY:

A.S.M.E. boiler construction and stainless steel storage tank are guaranteed by a non-prorated limited warranty for the lifetime of the system.

Here's how the CENTAURUS works:

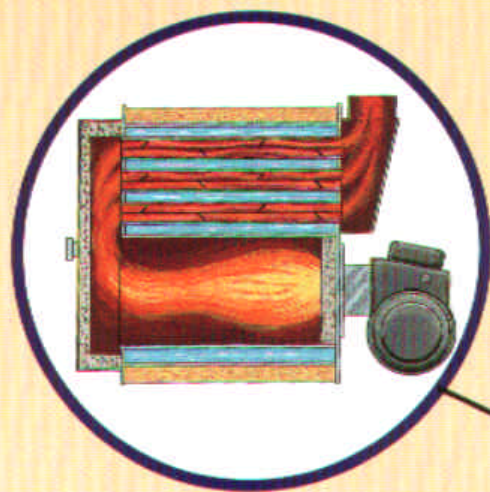
The CENTAURUS Comfort System consists of a high-efficiency OLYMPIA I oil or gas boiler integrated with a 41 gallon indirect water heater completely assembled and enclosed in a single jacket ready for connection to your heating zone(s). This combination furnishes both heat for the home and domestic hot water at the lowest possible costs.

The 41-gallon storage tank is a separate zone utilizing a circulator and wired to give priority to the domestic hot water assuring abundant hot water at all times.

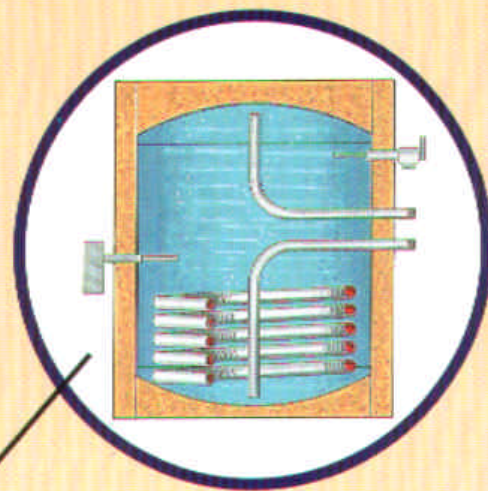
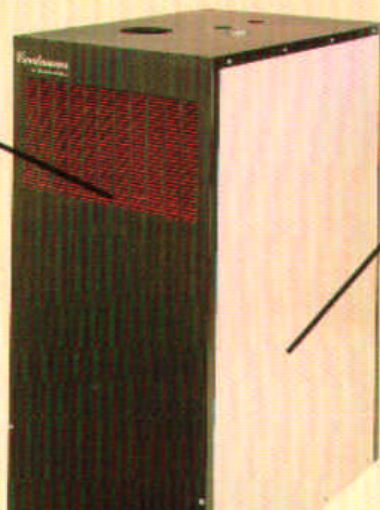
The CENTAURUS only operates when necessary for heat or domestic hot water. This allows the unit to stay off most of the time only running "on demand." There is no need to maintain temperature in the unit as in the case of a tankless coil.

Heated boiler water is circulated through a smooth wall stainless steel heat exchanger transferring heat energy to the surrounding domestic hot water stored in a stainless steel tank. The 2" polyurethane foam insulation that surrounds the tank keeps the water hot with a stand-by loss of only 1/2° per hour, the lowest in the industry.

The stainless steel tank tolerates high temperatures, won't crack, craze or melt; the smooth wall of the heat exchanger coil helps prevent the build-up of scaling deposits maintaining efficient heat transfer.



The Heart of the CENTAURUS



OLYMPIA I Boiler

Horizontal, wet base construction - recognized to be the most efficient type boilers available.

A.S.M.E. coded and I.B.R. rated.

EASY TO SERVICE - The OLYMPIA I boilers are the easiest and quickest unit to service of any on the market.

OPTIMUM MASS - The OLYMPIA I boiler contains 9 gallons of water which greatly reduces the number of times the unit

41 Gallon Stainless Steel Storage Tank

Both the storage tank and heat exchanger coil are made of stainless steel, the coil is smooth wall construction to resist scale build-up.

The storage tank has internal inlet and outlet tubes that allow full utilization of all the water stored, no air pockets or areas of unusable hot water.

Standby loss less than 1/2° F per hour, the best in the industry.

Reliable Heating Comfort with Abundant Hot Water to Meet Your Growing Domestic Life Style Demands

Today's improved domestic life style requires more dependable energy efficient heat and hot water than ever before. "On demand" usage for showers, dishwashers, hot tubs, baseboard heat and laundry is assured with the CENTAURUS increased hot water storage capacity and high efficiency heating components.

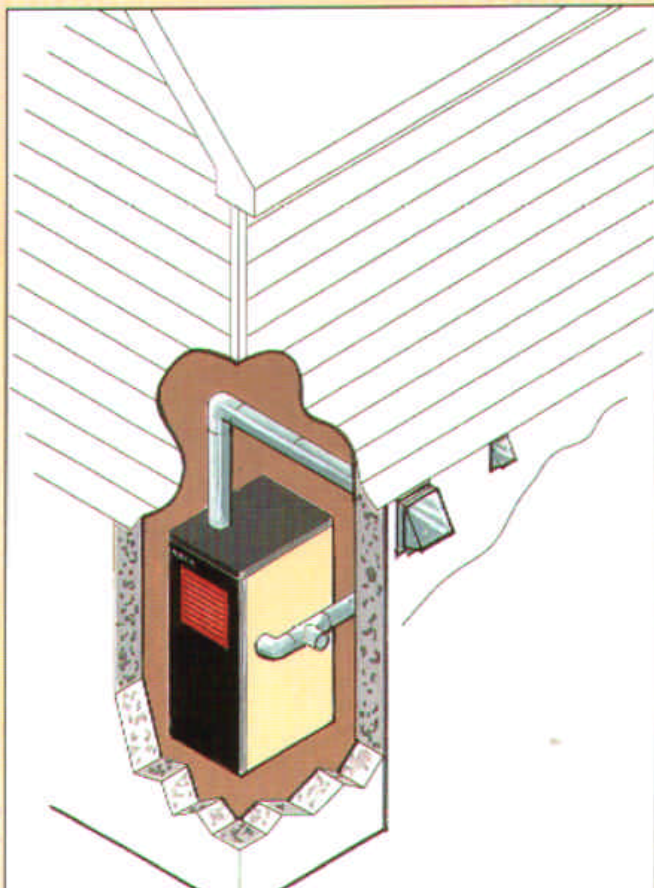
Without wasting energy or money, the CENTAURUS converts your home into a maximum efficiency comfort system consistently maintaining the ideal water temperature required to keep your home comfortable and your fuel bills affordable.



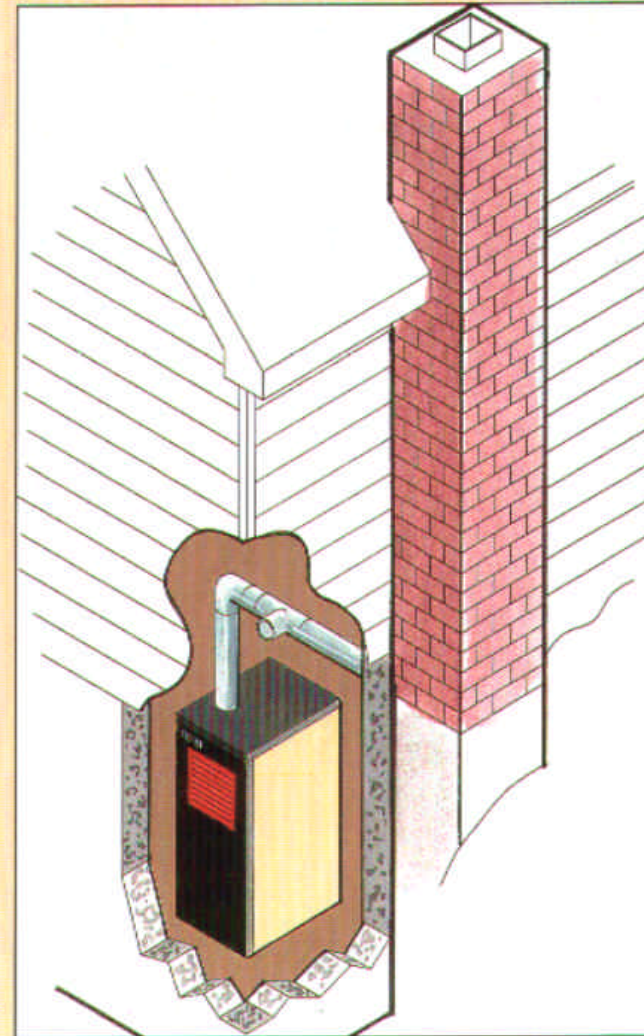
Direct Vent, Sealed Combustion CENTAURUS Oil Units

The Axeman-Anderson CENTAURUS units can be vented directly into a conventional chimney, but for those homes without a chimney or an inadequate chimney the CENTAURUS oil or gas units can be vented through the outside wall with the use of a power venter. However, the CENTAURUS OIL unit with the DVSC option allows it to be vented directly through the wall WITHOUT the use of a power venter.

The Model CN41-O-DVSC is fired with an oil burner designed to operate under a positive pressure and is equipped with pre and post purge control. Combustion air is ducted directly to the burner from the outside through a protective inlet hood with the use of a vacuum relief damper. Flue gases are vented directly through the wall to the outside through a specially designed vent hood.



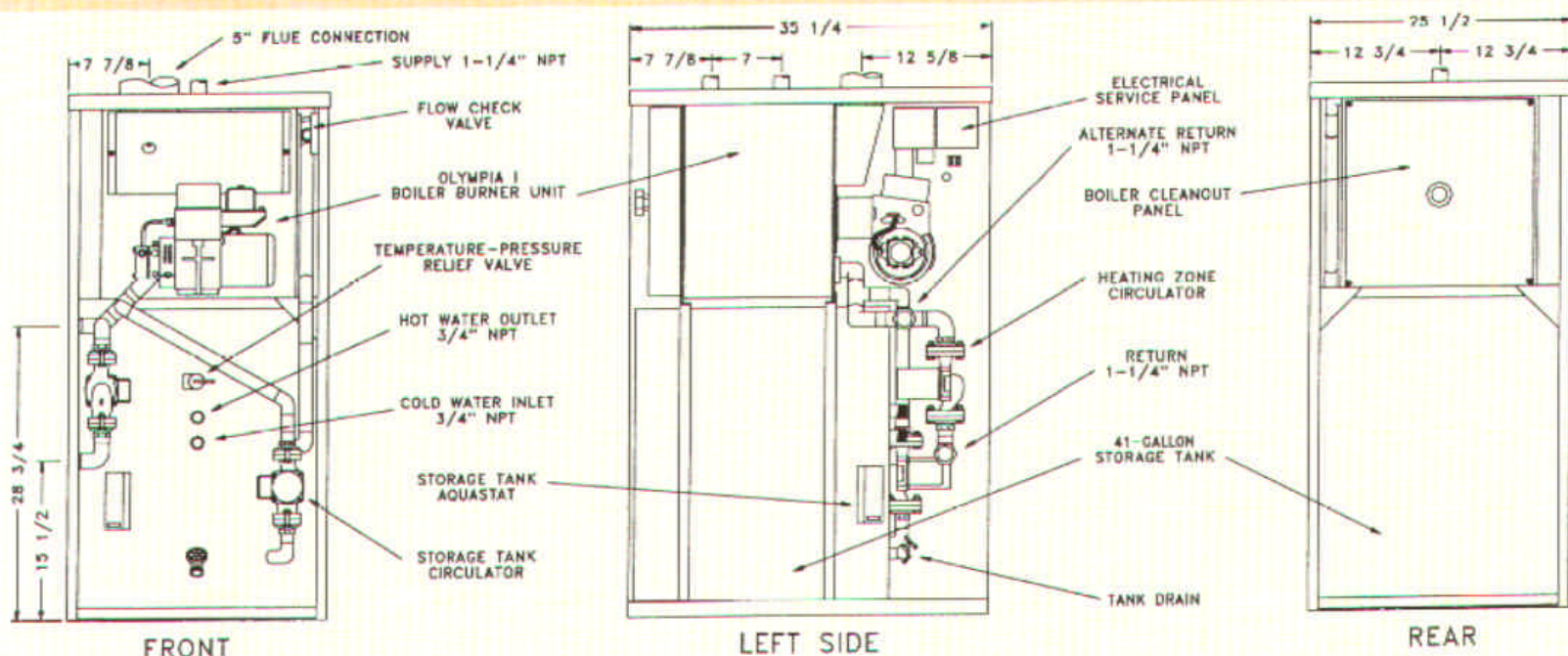
Direct Vent, Sealed Combustion Installation



Standard Chimney Installation

CENTAURUS, low-cost heat and abundant domestic hot water at the lowest possible costs for years to come.

Model CN-41 Specifications and Dimensions:



STANDARD EQUIPMENT

Completely assembled, jacketed and packaged unit containing the following: OLYMPIA I wet base horizontal tube boiler with 3450 R.P.M. flame retention oil burner or power gas burner, temperature-pressure gauge, A.S.M.E. relief valve, high limit aquastat and drain valve. When supplied with oil burner, burner relay cad cell and nozzle are furnished. A 41 gallon stainless steel storage tank with smooth wall stainless steel heat exchanger, temperature pressure relief valve, operating control piped and wired to the OLYMPIA I boiler with a circulator and flow check valve installed for domestic hot water priority. A single circulator heating zone piped and wired, an electrical service panel mounted inside the jacket consisting of a boiler high limit aquastat (remote bulb), burner-circulator relay, transformer, electrical connections from the various electrical components and a terminal strip for connecting a heating zone.

Optional Equipment

1. Outside combustion air intake kit available for oil-fired units. For gas-fired units kit not necessary.

OLYMPIA I Boiler Ratings

MODEL CN-41-O OIL FIRED					
I.B.R. INPUT G.P.H.	D.O.E. HEATING CAPACITY M.B.H.	NET I.B.R. RATING WATER M.B.H.	A.F.U.E. %		SHIPPING WEIGHT LBS.
			LESS DAMPER	WITH DAMPER	
.85	103	90	83.9	86.4	476

MODEL CN-41-G GAS FIRED					
GAS INPUT M.B.H.	D.O.E. HEATING CAPACITY M.B.H.	NET I.B.R. RATING WATER M.B.H.	A.F.U.E. %		SHIPPING WEIGHT LBS.
			LESS DAMPER	WITH DAMPER	
119	99	86	81.9	83.8	468

OPTIONAL MODEL

Direct Vent, Sealed Combustion Unit Oil Fired

Model CN41-0-DVSC - Includes all of the standard equipment listed except the oil burner is a Beckett AF II oil burner or equal for firing under a positive pressure with pre and post purge controls. In addition, a protective inlet hood for outside combustion air with a combustion air vacuum relief, a 5" to 4" reducer, and a vent hood for direct venting are furnished.

MODEL CN-41-0-DVSC OIL FIRED					
I.B.R. INPUT G.P.H.	D.O.E. HEATING CAPACITY M.B.H.	NET I.B.R. RATING WATER M.B.H.	A.F.U.E. %		SHIPPING WEIGHT LBS.
			LESS DAMPER	WITH DAMPER	
.75	92	80	85.2	87.2	476



STORAGE TANK SPECIFICATIONS AND PERFORMANCE RATINGS

AXEMAN-ANDERSON COMPANY
300 EAST MOUNTAIN AVENUE
SOUTH WILLIAMSPORT, PA 17701

CAPACITY GALS.	TEST PRESSURE	WORKING PRESSURE	FIRST HOUR RATINGS	
			@ 140°F	@ 115°F
41	300 psi	150 psi	172 gal./hr.	222 gal./hr.

ENGINEERS & MANUFACTURERS OF HEATING EQUIPMENT

TELEPHONE 717-326-9114
FAX 717-326-2152