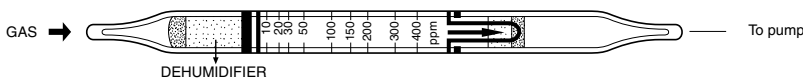


TUBE NO.
153U

ISOBUTYL ACETATE



1. PERFORMANCE

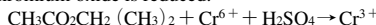
- 1) Measuring range : 10-400 ppm
Number of pump strokes : 1 (100mℓ)
- 2) Sampling time : 1.5 minutes/1 pump stroke
- 3) Detectable limit : 3 ppm
- 4) Shelf life : 1 year
- 5) Operating temperature : 10 ~ 40 °C
- 6) Temperature compensation : Necessary (See "TEMPERATURE CORRECTION TABLE")
- 7) Reading : Direct reading from the scale calibrated by 1 pump stroke
- 8) Colour change : Pale yellow → Pale blue (The top of discoloured layer is Brown, but read at the top of Pale blue.)

2. RELATIVE STANDARD DEVIATION

RSD-low : 10 % RSD-mid. : 5 % RSD-high : 5 %

3. CHEMICAL REACTION

Chromium oxide is reduced.



4. CALIBRATION OF THE TUBE

GAS CHROMATOGRAPHY

5. INTERFERENCE AND CROSS SENSITIVITY

Substance	Interference	Coexistence
Esters	Similar stain is produced.	Higher readings are given.
Alcohols	∕	∕
Ketones	∕	∕
Halogenated hydrocarbons FIG.1	Whole reagent is changed to Brown.	∕

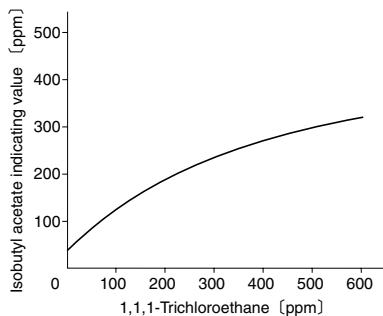


FIG.1 Influence of 1,1,1-Trichloroethane

TEMPERATURE CORRECTION TABLE

Scale Readings (ppm)	True Concentration (ppm)						
	10 °C (50° F)	15 °C (59° F)	20 °C (68° F)	25 °C (77° F)	30 °C (86° F)	35 °C (95° F)	40 °C (104° F)
400	—	—	400	285	240	210	190
300	—	—	300	225	190	170	160
200	—	275	200	165	140	130	120
150	—	195	150	125	110	103	95
100	—	120	100	90	80	75	70
50	70	55	50	45	40	40	35
30	40	35	30	25	20	20	20
15	20	15	15	15	10	10	10