

DON'T PLAY RENOVATION ROULETTE!

SAFE PRACTICES FOR HOMEOWNERS REPAIRING OR REMOVING SMALL AMOUNTS OF **ASBESTOS** MATERIALS



Asbestos could be in any home built or renovated before 1987. Thousands of different products remain hidden dangers in 1 in every 3 Australian homes including brick, weatherboard, fibro and clad homes, even apartments. It could be anywhere! Under floor coverings including carpets, linoleum and vinyl tiles, behind wall and floor tiles, in cement floors, internal and external walls, ceilings and ceiling space (insulation), eaves, garages, roofs, around hot water pipes, fences, extensions to homes, garages, outdoor toilets, backyard and farm structures, chook sheds and even dog kennels.

WAS YOUR HOME BUILT OR RENOVATED BEFORE 1987?

Before commencing any work around the home visit asbestosawareness.com.au for examples of products that might contain asbestos and learn where they might be located in your home.

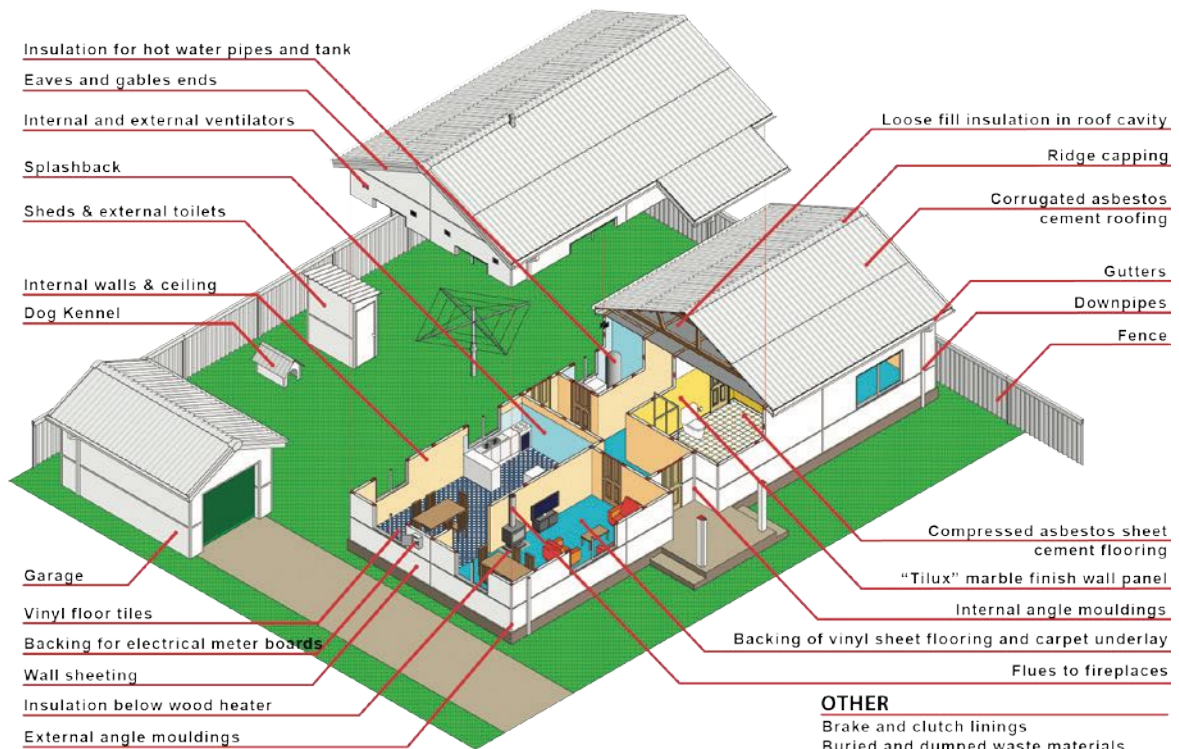
If sealed, left undisturbed and in good condition, asbestos products don't pose a health risk. However, if disturbed fibres are released which can be inhaled and cause asbestos-related diseases.

- **ENSURE** all asbestos sheeting (fibro) is in good condition.
- **SEAL** asbestos sheeting (fibro) and corrugated asbestos (walls, fences and roofing) with good quality paint to prevent the release of fibres.
- **CHECK** from time to time to ensure the paint is still in good condition.



1 IN 3 AUSTRALIAN HOMES CONTAIN ASBESTOS!

DO YOU KNOW WHERE ASBESTOS COULD BE IN YOUR HOME?



WORKING SAFELY WITH SMALL AMOUNTS OF ASBESTOS AROUND THE HOME

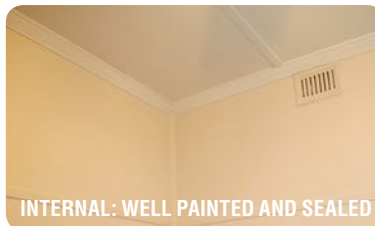
It's recommended that removal of asbestos materials is performed by a licenced asbestos removalist. However, when renovating or doing maintenance around the home, homeowners may come across what they suspect are asbestos-containing materials.

If a small amount of non-friable (bonded) asbestos is found, homeowners may wish to remove and dispose of it safely or repair minor damage to a wall of asbestos sheeting (fibro).

ONLY CLASS A LICENCED REMOVALISTS CAN REMOVE ASBESTOS THAT IS FRIABLE (CRUMBLY MATERIAL).

Accidents can happen. Sometimes an asbestos sheet or other asbestos-containing products can be damaged, broken or may be unsealed so it is important to seal all asbestos materials including any breaks or cracks to prevent the release of fibres.

- **SEAL** broken or damaged asbestos with quality paint. While some paints specifically designed to seal asbestos are available, as long as you use a good quality paint to cover the exposed area, the asbestos material will be sealed.
- **CHECK** the area from time to time to ensure the paint is still in good condition and recoat when required.



MANAGING ASBESTOS HAZARDS AROUND THE HOME

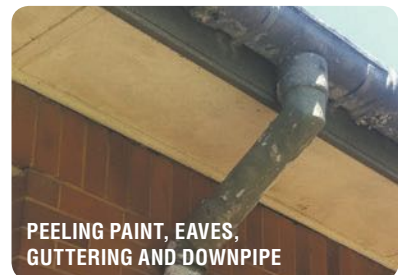
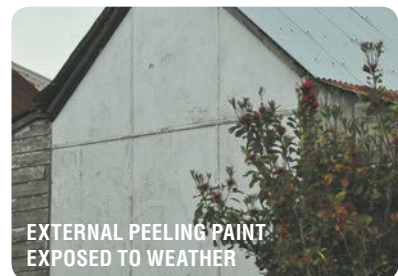
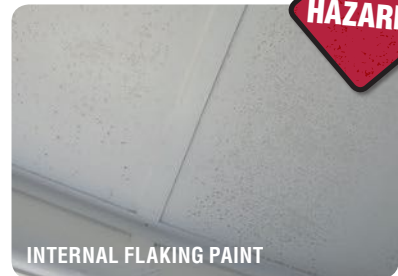
When managing asbestos you must minimise the risk of releasing fibres that can become airborne. To ensure you protect yourself, your family and those around you (including neighbours and pets) from exposure to potentially dangerous fibres when removing small amounts of asbestos, there are some basic safety rules you must follow.

SAFETY CHECKLIST

Asbestos fibres can be harmful to health so when it comes to asbestos be sure to remember;

DON'T CUT IT!
DON'T DRILL IT!
DON'T DROP IT!
DON'T SAND IT!
DON'T SAW IT!
DON'T SCRAPE IT!
DON'T SCRUB IT!

DON'T DISMANTLE IT!
DON'T TIP IT!
DON'T WATERBLAST IT!
DON'T DEMOLISH IT!
AND WHATEVER YOU DO...
DON'T DUMP IT!



FOLLOW THESE DO'S & DON'TS TO ENSURE YOU AND YOUR FAMILY ARE SAFE

DO'S

- ✓ **PLAN** your job in advance so you have all the necessary equipment on hand.
- ✓ **WEAR** Personal Protective Equipment (PPE) at all times.
- ✓ **ENSURE** no electrical wiring or electrical products are in the work area.
- ✓ **PREPARE** your equipment and work area before you start.
- ✓ **ONLY** wear old clothes under the coveralls. These should be disposed of when the job is completed.
- ✓ **COVER** removal area in 200um plastic drop sheets to catch any fibres, dust and debris.
- ✓ **WET** the area that contains asbestos using a gentle mist spray of water before commencement. Detergent added to the water helps improve absorption or a mix of 1 part PVA glue to 5 parts water will help bond the material to minimise any dust.
- ✓ **CONTINUE** wetting asbestos that is exposed – If you can see it, wet it!
- ✓ **SPRAY** using a spray bottle to wet smaller areas.
- ✓ **LOW-PRESSURE** constant spray mist using a garden hose with a mist nozzle can be used to wet larger areas outdoors such as external walls or fences.
- ✓ **MINIMISE** the number of people in the work area.
- ✓ **DECONTAMINATE** yourself, the work area and equipment when work is completed.

DON'TS

- ✗ **NEVER CREATE** dust.
- ✗ **NEVER BREAK** asbestos sheeting.
- ✗ **NEVER WORK** in windy conditions.
- ✗ **NEVER USE POWER TOOLS OR EQUIPMENT** that can produce dust.
- ✗ **NEVER USE BROOMS OR BRUSHES** except for sealing if using paint or a PVA glue solution.
- ✗ **NEVER USE HIGH PRESSURE** water spray on ANY asbestos product including walls, fences and roofing.
- ✗ **NEVER USE HOUSEHOLD VACUUM CLEANERS.** Only special H Class Asbestos vacuum cleaners are used by licenced removalists to collect dry asbestos dust and debris.

WARNING

NEVER WORK ON DRY OR FRIABLE ASBESTOS. FOR AREAS THAT CAN'T BE WET DOWN PRIOR TO REMOVAL, ENGAGE A LICENCED ASBESTOS REMOVALIST.

DO NOT WET ANY AREA THAT MAY CONTAIN ELECTRICAL WIRING OR EQUIPMENT THAT MAY BE CONNECTED TO ELECTRICITY SUCH AS HOUSEHOLD GOODS (FRIDGES), TOOLS ETC.

DON'T KNOW HOW TO IDENTIFY ASBESTOS-CONTAINING MATERIALS?

Visit asbestosawareness.com.au to view our online video, *Asbestos In Your Home – The Ultimate Renovators Guide* and search the *Asbestos Products Database* for examples of what to look for!

ASBESTOS PERSONAL PROTECTIVE EQUIPMENT (PPE) FOR HOMEOWNERS

The purpose of wearing PPE when working with asbestos is to create a barrier between you and the fibres. There should be no tears or breaks in any PPE products. Remember, if products (such as coveralls) are damaged or torn, fibres can get in so any damaged or perished PPE must NOT be used and must be disposed of.

1. **SUITABLE PPE** is made from materials that protect you and your clothes from fibres including coveralls, gloves, safety footwear, shoe covers, gloves and protective eyewear.
2. **DISPOSABLE PPE** can be used ONLY ONCE then must be disposed of safely just like any asbestos waste (see page 6).
3. **IF YOU KNOW** your home contains asbestos, have an *Asbestos PPE Kit* and sealing paint on hand should it be required to make emergency repairs or seal asbestos safely if it becomes damaged.

ASBESTOS 'PPE KIT'

PERSONAL PROTECTION EQUIPMENT (PPE)

- **WEAR** all items listed in the PPE Kit whenever working with asbestos.
- **ALL** items in a disposable PPE Kit must be disposed of as ASBESTOS WASTE after use.

Wear the PPE in the following order:

1. Disposable coveralls
2. Footwear
3. Shoe covers
4. Gloves
5. Mask
6. Protective eyewear

NOTE: ONLY WEAR old clothes under the coveralls. These should be disposed of with the coveralls after use.

DISPOSABLE COVERALLS

- Should be rated Type 5, Category 3.
- Be labelled for asbestos use.
- Be one size too big to prevent breaking or tearing when worn.
- Include a hood and elasticised cuffs.
- Cuffs should be pulled over the edge of gloves.
- If the cuffs of coverall arms are loose, seal them with tape to prevent fibres getting in.
- After the shoe covers are fitted, ensure the coverall legs then go over the top of shoe covers.
- After the mask and eyewear are fitted, ensure the hood goes over the mask straps and arms of eyewear, and covers all hair.

FOOTWEAR & SHOE COVERS TO BE WORN OVER SHOES

- **NEVER** wear boots or shoes with laces as they can't be decontaminated.
- **GUMBOOTS** are the best option as they are easily wiped clean and have no laces. Once cleaned appropriately they can be re-used for non-asbestos work.
- **SHOE COVERS** are worn OVER shoes and should cover all of the boot/shoe and be secured above the ankle.
- **WHEN** shoe covers are secured, pull the cuffs of the coverall legs down to cover the top of shoe covers.

GLOVES

- Use **ONLY** disposable Latex, Nitrile or neoprene gloves.
- Tuck under the cuffs of coveralls and tape the cuffs if loose.

MASK (RESPIRATORY PROTECTIVE EQUIPMENT)

- Your mask should be worn at all times when working with asbestos containing materials.
- Minimum P2 filter, half face disposable particulate respirator.
- Half face non-disposable particulate respirator with cartridge is preferred but it must be decontaminated after each use.
- The wearer must be clean shaven in the area of the seal.
- All respirators are different shapes and sizes so it's important that the size is correct to properly fit to the wearer's face.
- Ensure your mask fits perfectly by conducting a respirator fit check.
 - Close off inlet to filter with hands
 - Inhale gently
 - Hold for 10 seconds
 - Ensure the face piece remains slightly collapsed

PROTECTIVE EYEWEAR

- **ALWAYS** wear protective eyewear when working with materials that might produce dust.
- After fitting your mask, fit your eyewear and place the hood over the top of the mask straps and eyewear arms.



EQUIPMENT CHECKLIST

- ✓ **ENSURE** your PPE kit includes ALL items listed here.
- ✓ **PLASTIC 200um** in rolls for covering areas in the work space.
- ✓ **DUCT TAPE** for sealing bags and securely joining pieces of plastic from rolls.
- ✓ **WET WIPES** (preferred) or disposable cloths for decontaminating the area after the job is complete.
- ✓ **BUCKET** for wetting disposable cloths when decontaminating the area.
- ✓ **WATER** sprayer (hose or bottle) for wetting down asbestos materials.
- ✓ **SEALANT** (PVA glue) to mix 1 part per 5 parts with water to seal edges.
- ✓ **NON-ELECTRICAL** tools for removal of fixings and materials if required.
- ✓ **PLASTIC BAGS** to contain and seal in asbestos materials. These should be made of 200um (0.2mm) virgin plastic and be labelled/marked as 'ASBESTOS WASTE'. If bags are unavailable, use 200um virgin plastic in rolls and label/mark as 'ASBESTOS WASTE'.



WORKING SAFELY WITH ASBESTOS

1. **INFORM** your family and neighbours in advance before commencing work.
2. **REMOVE** washing from clotheslines. Remove pets and pet bowls from work area.
3. **ENSURE** no one else is near the area you are working in unless they're wearing PPE.
4. **CLOSE** all doors and windows to prevent drafts.
5. **TURN OFF** all heating or cooling systems including fans and air-conditioning.
6. **COVER** any surface in the work area that could become contaminated with fibres, dust and debris with plastic sheeting (200um drop sheets) and secure with duct tape.
7. **BEFORE STARTING WORK** wear all your PPE gear!
8. **KEEP** asbestos materials wet using a light mist spray.
9. **AVOID** breaking asbestos materials during work.
10. **DO NOT** leave the work area once work has commenced. If you must leave while work is underway, you must decontaminate yourself as per the following procedures and recommence work using new PPE.

STEPS FOR DECONTAMINATION

HOW TO SAFELY DOUBLE BAG AND SEAL ASBESTOS WASTE AND PPE

1. Carefully place asbestos materials in the 200um plastic bags or wrap using rolls of 200um plastic (drop sheets), seal using duct tape and label **'DANGER ASBESTOS WASTE'**.
2. Plastic bags containing asbestos should NOT be more than half full to prevent breaking and must be double bagged.
3. Tightly twist the bag opening and fold over to form a 'goose neck'.
4. Secure with heavy duty duct tape or similar to seal.
5. Place each sealed bag inside a second plastic bag labelled **'DANGER ASBESTOS WASTE'** and seal as you did the first bag with duct tape. This is called 'double bagging'.
6. If using rolls of 200um plastic, carefully wrap items and seal edges of plastic with duct tape. Repeat the process to double wrap materials.
7. Whether using bags or rolls of 200um plastic, all materials must be double wrapped or double bagged, sealed with duct tape and labelled **'DANGER ASBESTOS WASTE'**.

IMPORTANT

ALL MATERIALS MUST BE 'DOUBLE BAGGED' USING 200UM PLASTIC BAGS OR 'DOUBLE WRAPPED' USING 200UM PLASTIC ROLLS, SEALED WITH DUCT TAPE AND LABELLED 'DANGER ASBESTOS WASTE' BEFORE BEING REMOVED FROM THE WORK AREA FOR APPROPRIATE DISPOSAL.

YOU MUST CONTINUE TO WEAR YOUR PPE THROUGHOUT THIS PROCESS.

REMOVE YOUR MASK LAST!

DECONTAMINATING THE WORK AREA

1. Carefully wrap plastic drop sheets and double bag or wrap.
2. Use wet wipes or wet disposable cloths to wipe away any dust from surfaces or tools.
 - Wet wipes/cloths should be used **ONCE ONLY**.
 - Wet wipes/cloths should be used flat (not wadded).
 - If using cloths, use the bucket of water to wet cloths before use.
 - Never rinse cloths in water and reuse.
 - After use, wet wipes or cloths must be double bagged or double wrapped and seal with duct tape.
3. Carefully wet wipe surfaces and all hand tools or equipment including the bucket. If tools aren't able to be decontaminated they should be discarded as **'ASBESTOS WASTE'** or double bagged for later use but **ONLY** when wearing PPE.
4. Wet wipe the outside of bags before removing bags from the work area.

PERSONAL DECONTAMINATION

1. Remove any visible asbestos dust from protective clothing by wet wiping with clean, wet wipes/cloths and place a 200um plastic bag.
2. Carefully remove shoe covers, gloves and coveralls and place in a 200um plastic bag.
3. Use wet wipes/cloths to wipe down footwear then place cloths in a plastic bag.
4. Wipe down the outside of all bags with wet wipes/cloths and place in a plastic bag.
5. Remove mask last and place in a 200um plastic bag and seal using the double bag method.
6. Remove old clothing and double bag as you did the other disposable items.
7. Seal all plastic bags using duct tape and the double bag method.
8. Wash hands, nails, face and head thoroughly with soapy water.
9. Shower and wash hair to complete personal decontamination.

IMPORTANT

WHEN DECONTAMINATING YOURSELF, ALL ITEMS MUST BE DOUBLE BAGGED, SEALED WITH DUCT TAPE AND DISPOSED OF AS ASBESTOS WASTE AS PER THE ABOVE.

SAFE DISPOSAL OF ASBESTOS WASTE - Whatever you do, DON'T dump it!

- It is **IMPORTANT** that **ALL** PPE and materials used when removing or repairing asbestos are disposed of as **ASBESTOS WASTE**.
- Not all waste centres accept asbestos waste. Check with Council for your nearest authorised asbestos waste disposal centre.

ALWAYS MANAGE **ASBESTOS** SAFELY!



WHEN IT COMES TO ASBESTOS;

DON'T CUT IT!
DON'T DRILL IT!
DON'T DROP IT!
DON'T SAND IT!
DON'T SAW IT!
DON'T SCRAPE IT!
DON'T SCRUB IT!
DON'T DISMANTLE IT!
DON'T TIP IT!
DON'T WATERBLAST IT!
DON'T DEMOLISH IT!
AND WHATEVER YOU DO...
DON'T DUMP IT!

ThinkSmart.ThinkSafe.Think
asbestosawareness.com.au

it's not worth the risk!

**IT IS RECOMMENDED THAT ONLY LICENCED ASBESTOS REMOVALISTS
REMOVE ASBESTOS-CONTAINING MATERIALS.**

- There are 2 types of Asbestos Removal Licences: Class A and Class B.
 - Class A Licence can remove all types of asbestos including Friable (crumbly material).
 - Class B Licence can only remove non-friable (solid) asbestos materials.
- Regulations about asbestos removal vary from state-to-state. Visit asbestosawareness.com.au to ensure you follow regulations.



For more information visit asbestosawareness.com.au

© 2016 Asbestos Awareness Campaign, the Asbestos Education Committee & the Heads of Asbestos Coordination Authorities in partnership with the Asbestos Diseases Research Institute

