

JOHNS-MANVILLE



PRODUCTS

Johns-Manville

Asbestos Flexboard

Insulating Board Products

	Page
Asbestos Flexboard . . .	2
Glazecoat Ceiling Panels	3
Glazecoat Wall Plank . .	3
Building Board	3
Weathertite Sheathing . .	4
Insulating Lath	4
Johns-Manville District Offices	4

J-M ASBESTOS FLEXBOARD

Flexboard* is made of asbestos and cement. These two minerals — practically indestructible — are united under great pressure, and then hydraulically re-pressed to give Flexboard its unusual strength and unique flexibility. Furnished in Standard and Decorative forms.

In appearance, Standard Flexboard is an attractive stone-gray color with a smooth, hard surface that needs no other finish for either outdoor or indoor use.

Decorative Flexboard for interior use combines the qualities of Standard Flexboard with the added advantage of soft, mottled coloring.

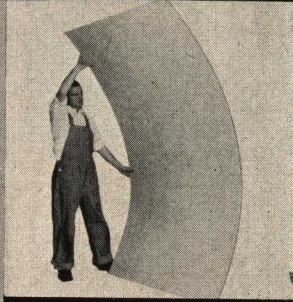
Tested and proven, fireproof Flexboard is the building material of a thousand uses. Its varied applications have included a decorated ceiling in the huge main concourse of New York's famous Grand Central Terminal; modern business interiors and exteriors; outdoor factory conveyors and cylindrical structures; factories; domestic and industrial remodeling; drive-in theaters; roadside stands and restaurants; filling stations; outdoor dance floors; waiting rooms; dairies; farm buildings, such as hog houses, chicken brooders and barns; billboards; and many others.

In addition, Flexboard is being used more and more in the fabrication of many manufactured articles. Representative of such products are ironing boards, outdoor furniture, lockers, fireplace screens, bird houses, bins, shutters, kennels, flower boxes, hotbed frames, hot pads, chests, trays, home bars, table tops, blackboards, signs and playground equipment. For further information, write your J-M Dealer, or the nearest office shown on the back of this folder.

*Reg. U. S. Pat. Off.



Fireproof



Flexible



Nails close to edges



Easy to work



Decorative

Standard Flexboard

ADVANTAGES

Flexboard's advantages are many. This smooth, hard-finish material is fire-proof, moisture-proof and rot-proof. It is flexible and strong. Insect-proof and rodent-proof, Flexboard has the permanence of stone and yet is easy to work and fabricate. It serves inside or outside, and can be nailed close to the edges without pre-drilling. The large sheets are easy and economical to apply.

APPLICATION

In $\frac{3}{16}$ " thickness, Flexboard may be nailed directly to studding or joists spaced on not greater than 16" centers. The $\frac{1}{8}$ " thickness should be nailed to a solid backing of $\frac{3}{8}$ " plywood or wood sheathing. When used over plaster, suitable nailing grounds should be installed. Flexboard may also be applied with Flexboard Cement, supplemented by mechanical fasteners. Unscored sheets may be curved up to 30" radius lengthwise and up to 36" radius crosswise for $\frac{1}{8}$ " thickness; up to 36" radius lengthwise and up to 54" radius crosswise for $\frac{3}{16}$ " thickness. Detailed directions on request.

STANDARD SIZES, PACKAGING AND WEIGHTS

Thickness, in.	Size of sheets, ft	Sheets per package	Sq ft per package	Approx. weight per package, lb
$\frac{1}{8}$	4 x 8 (unscored)	2	64	79
	4 x 4 (scored in 4" squares)	6	96	125
$\frac{3}{16}$	4 x 8 (unscored)	2	64	112

Decorative Flexboard

Decorative Flexboard is furnished in four colors: Rose, Green, Gray and Buff. The colors go all the way through the sheets. Decorative Flexboard sheets are waxed and given a fine, lustrous finish.

Furnished in $\frac{1}{8}$ " thickness only, Decorative Flexboard is available in the same sizes, plain and scored, as $\frac{1}{8}$ " Standard Flexboard. Packages of plain sheets contain 4 sheets (128 sq ft) and weigh about 160 lb. Packages of scored sheets contain 6 sheets (96 sq ft) and weigh about 115 lb. Write for complete details.

J-M INSULATING BOARD PRODUCTS

Johns-Manville research engineers have made a real and lasting contribution to the building industry in their development and perfection of Johns-Manville Insulating Board Products.

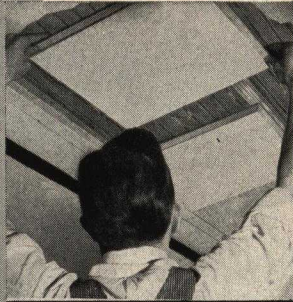
Two huge Johns-Manville plants, located at Jarratt, Virginia and Natchez, Mississippi, are devoted entirely to the manufacture of Insulating Board Products from selected, clean pine fibres.

Johns-Manville Insulating Board Products described here include: Glazecoat Ceiling Panels, Glazecoat Wall Plank, Building Board, Weathertite* Sheathing and Insulating Lath.

Building Board, Ceiling Panels and Wall Plank are available with the smooth, durable, easily cleaned Glazecoat finish. Building Board is furnished in natural finish (light buff) or Ivory Glazecoat finish. Ceiling Panels are furnished in Ivory Glazecoat finish only. Wall Plank are furnished in Ivory, Graytone and Rose Tan Glazecoat finish. With the choice of the pleasing natural finish or the smooth Glazecoat finish, either of which may be painted if desired, these Johns-Manville Insulating Board Products provide versatile and practical interior finishes for new or existing houses, churches, theaters, shops and other commercial buildings of all kinds.

Complete application directions and further details on any Johns-Manville Insulating Board Product will be furnished on request.

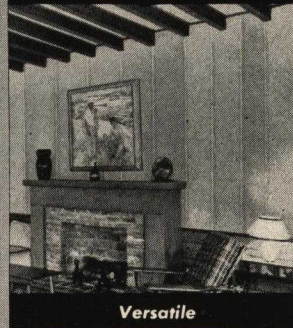
*Reg. U. S. Pat. Off.



Speedy application



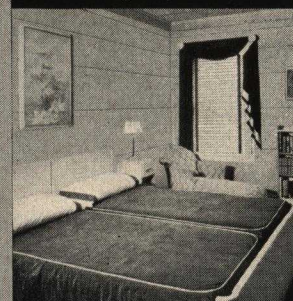
Concealed nailing



Versatile



Easy to handle



Economical

Glazecoat Ceiling Panels

ADVANTAGES

J-M "Lightning Joint" for speedy application and concealed nailing. Easy to handle. Strong and rigid. Economical... ready-cut and finished.

APPLICATION

Ceiling Panels may be applied over new or existing construction, usually over wood furring. Complete application instructions in each carton.

SIZES, PACKAGING, WEIGHT AND COLOR

Thickness, in.	Size, in.	Pieces per package	Sq ft per package	Approx. weight per 1000 sq ft, lb	Color
1/2	12 x 12	64	64	797	Ivory Glazecoat Finish.
	16 x 16	36	64	797	
	16 x 32	18	64	813	

All units have the "Lightning Joint".

Glazecoat Wall Plank

ADVANTAGES

Same as those listed above for Ceiling Panels, plus the added advantages of long lengths and wider selection of colors.

APPLICATION

Same as described above for Ceiling Panels. Glazecoat Wall Plank may be applied either vertically or horizontally with equal success.

SIZES, PACKAGING, WEIGHT AND COLORS

Thickness, in.	Size, width and length	Pieces per package	Sq ft per package	Approx. weight per 1000 sq ft, lb	Colors
1/2	10" x 8 ft	12	80	850	Ivory, Graytone and Rose Tan Glazecoat Finish.
	10" x 10 ft	12	100	850	
	10" x 12 ft	12	120	850	
	12" x 8 ft	12	96	845	
	12" x 10 ft	12	120	840	
	12" x 12 ft	12	144	840	
	16" x 8 ft	12	128	830	
	16" x 10 ft	12	160	825	
	16" x 12 ft	12	192	825	

All units have the "Lightning Joint" on long edges; short edges are square. Packed only in single colors, widths and lengths. All units are beaded, paralleling the bevel.

Building (Insulating) Board

ADVANTAGES

Economical and versatile. Large sheets are easy to apply and cover large areas.

APPLICATION

Over framing members, wood furring or other level bases suitable for nailing.

SIZES, PACKAGING, WEIGHT AND COLORS

Thickness, in.	Size, ft	Pieces per package	Sq ft per package	Approx. weight per 1000 sq ft, lb		Colors
				Natural	Glazecoat	
1/2	4 x 6	6	144	770	798	Natural finish (light buff) and Ivory Glazecoat finish.
	4 x 7	6	168	769	798	
	4 x 8	6	192	766	797	
	4 x 9	6	216	764	796	
	4 x 10	6	240	763	795	
	4 x 12	6	288	763	795	

All edges square.

(Continued on following page)

J-M INSULATING BOARD PRODUCTS (Cont'd)

Johns-Manville Weathertite* Sheathing and Insulating Lath offer several important advantages to the builder of a new home.

Weathertite Sheathing provides a greater measure of protection against moisture penetration, assuring a house which is virtually wind and water tight. This strong, weather-resistant material is integrally impregnated throughout with pitch. It is not a vapor barrier as it permits the passage of moisture vapor. For horizontal application, Weathertite Sheathing is furnished with the "V-Tite" joint, designed to reduce the infiltration of dirt and moisture. Laboratory tests prove it to have greater bracing strength than horizontally applied wood sheathing.

Insulating Lath, as its name implies, not only provides a stronger, more effective bond for plaster, but serves as an efficient wall and ceiling insulation. Cracking is reduced to a minimum, and since the plaster is applied against a solid, unbroken surface, lath marks are eliminated. The plaster goes on easier and there is a desirable saving in material and labor. More and more modern homes are being built with this improved plaster base. Write Johns-Manville for further details.



Strong and weather-resistant



Insulates as it sheathes



An insulating plaster base

Weathertite Sheathing

ADVANTAGES

Weathertite Sheathing is stronger, more weather-resistant and costs less to apply. It insulates as it sheathes, increasing comfort and reducing fuel bills. Assures practically a wind- and water-tight house.

APPLICATION

Vertical: Sheets 4 ft by 8, 8½, 9, 10 and 12 ft are applied with the long dimension parallel to the framing members.

Horizontal: Sheets 2 ft by 8 ft are applied at right angles to the framing members with the "point" of V-Tite joints at the top, grooved edge at the bottom.

SIZES, PACKAGING AND WEIGHT

Thickness, in.	Size, ft	Pieces per package	Sq ft per package	Approx. weight per 1000 sq ft, lb
½	4 x 8	6	192	834
	4 x 8	4	128	1260
25/32	4 x 9	4	144	1260
	4 x 10	4	160	1260
	4 x 12	4	192	1260
	2 x 8	6	96	1260

Note: 4-ft. widths have all edges square; 2-ft. width has short edges square, V-Tite joint on long edges.

Insulating Lath

ADVANTAGES

Serves as an effective insulation as well as an economical plaster base.

APPLICATION

May be nailed directly to framing members or to furring over masonry walls.

SIZES, PACKAGING AND WEIGHT

Thickness, in.	Size, in.	Pieces per package	Sq ft per package	Approx. weight per 1000 sq ft, lb
½	18 x 48	15	90	867

Note: Short edges, beveled and square edge; long edges, beveled and shiplap edge.

*Reg. U.S. Pat. Off.



Johns-Manville

22 EAST 40th STREET, NEW YORK 16, N.Y.

OFFICES IN ALL LARGE CITIES

DISTRICT OFFICES

Atlanta 3, Ga. 101 Marietta St.	Cincinnati 2, Ohio Central Pkway. at Walnut St.	Detroit 2, Mich. Grand Blvd. at 2nd St.	Milwaukee 2, Wis. 757 N. Broadway	New York, N.Y. Box 270 Murray Hill Station	St. Louis 1, Mo. 1000 Market St.
Boston 10, Mass. 49 Federal St.	Cleveland 15, Ohio 45 Prospect Ave., N.W.	Houston 1, Texas 2212 Polk Ave.	New Orleans 12, La. 610 Poydras St.	Philadelphia 3, Pa. 1617 Penna. Blvd.	San Francisco 5, Calif. 116 New Montgomery St.
Chicago 54, Ill. 222 North Bank Drive	Denver 2, Colorado 1755 Glenarm Place	Los Angeles 13, Calif., 816 W. 5th St.		Pittsburgh 22, Pa. 717 Liberty Ave.	Seattle 9, Wash. 777 Thomas St.

CANADIAN JOHNS-MANVILLE CO., LIMITED
MONTREAL TORONTO VANCOUVER WINNIPEG

JOHNS-MANVILLE INTERNATIONAL CORPORATION
NEW YORK LONDON BUENOS AIRES

Digitized by:



ASSOCIATION
FOR
PRESERVATION
TECHNOLOGY,
INTERNATIONAL
www.apti.org

BUILDING
TECHNOLOGY
HERITAGE
LIBRARY

<https://archive.org/details/buildingtechnologyheritagelibrary>

From the collection of:

Carol J. Dyson, AIA