



Armstrong

excelon tile

... the low-cost plastic floor with the luxury look

A lovely floor for any room in your home

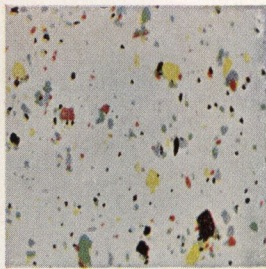
A wonderful assortment of exciting designs and fresh, new decorator colorings in Armstrong Excelon Tile makes it easy for you to choose a color scheme for any room. Here are styles to blend handsomely with traditional or modern interiors—and colorings to harmonize with every decorative scheme.



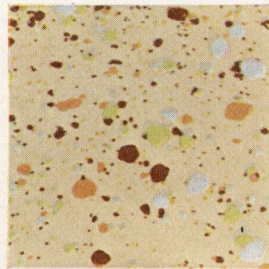
Luxuriously easy to care for, Excelon is an ideal floor for today's casual way of living. This vinyl-asbestos floor has a wonderfully smooth surface that isn't harmed by grease—or anything else that's likely to be spilled in any room in your home. A swish of a mop whisks away every speck of dust and dirt.

Upstairs, downstairs, in any room in the house, Armstrong Excelon Tile will stay bright and sparkling for years. It can even be installed on concrete slab floors or in basements, where alkaline moisture tends to harm many other flooring materials. It may also be installed over radiant heating.

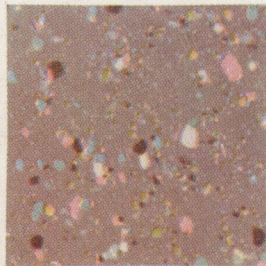
... and Armstrong Excelon Tile is budget-priced



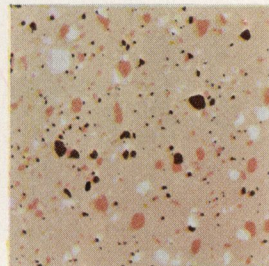
Andover White No. 735*



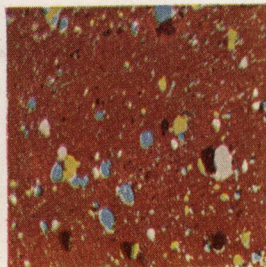
Lynn Ivory No. 748*



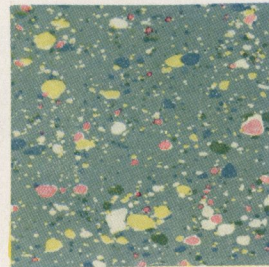
Meridan Taupe No. 747*



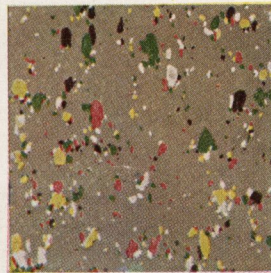
Rutland Beige No. 746*



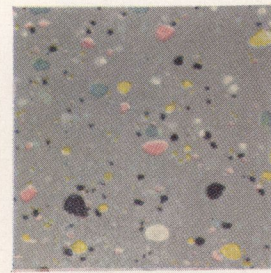
Bangor Copper No. 744*



Waterbury Green No. 734*



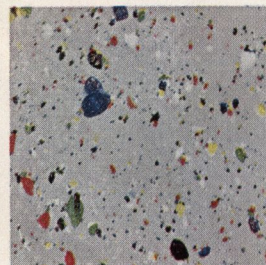
Cape Cod Beige No. 737*



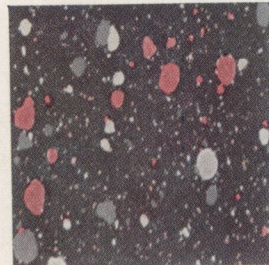
Worcester Gray No. 749*



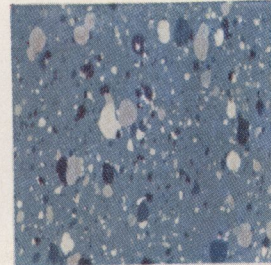
Chelsea White No. 731*



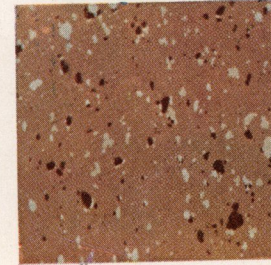
Bedford Gray No. 736*



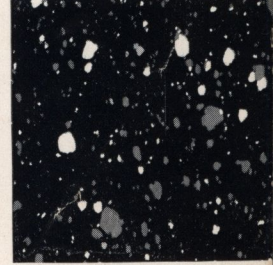
Providence Charcoal No. 739*



Cornwall Blue No. 733*



Arlington Cedar No. 740*



Dorset Black No. 732*

spatter

is one of the most popular designs in Armstrong Excelon Tile. Equally at home with modern or traditional furnishings, Spatter Excelon is available in a variety of gay, lively colorings. It may also be combined with other Excelon designs, as in the charming kitchen on the opposite page.

directional graining

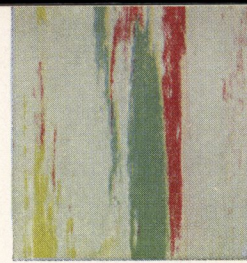
is one of the most popular of modern floor stylings. Excelon is available in many smart combinations of two or more colors. Because Excelon is made with high-quality vinyl plastic, the colors are unusually bright, and the graining stands out sharply and clearly. The widest variety of colorings is available in directional grained Excelon Tile, so it's easy to match any color scheme. This styling can also be combined with other Excelon designs such as Spatter for unusual effects.



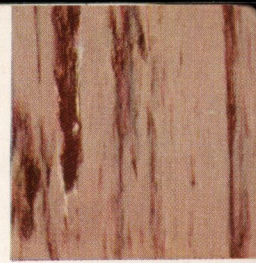


Seneca White No. 770

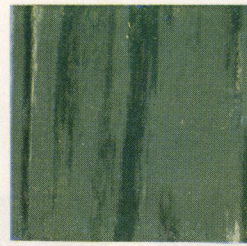
*Service Gauge Only



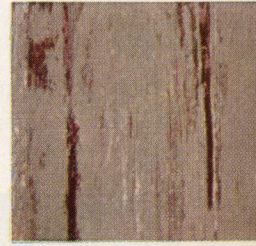
*Cherokee White No. 776



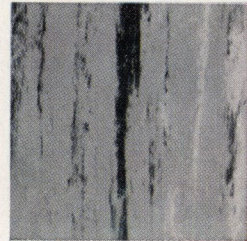
Mohican Cedar No. 779



Osage Green No. 780



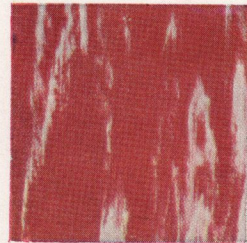
Iroquois Tan No. 783



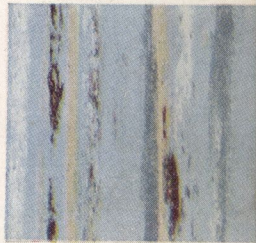
Mohawk Gray No. 771



Cheyenne Taupe No. 700



*Apache Red No. 777



*Acoma Blue No. 705



*Mohave Charcoal No. 786



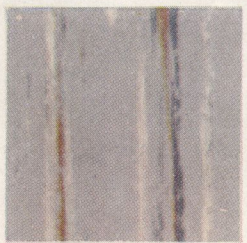
*Mandan Gray No. 701



*Algonquin Green No. 704



Comanche Black No. 772



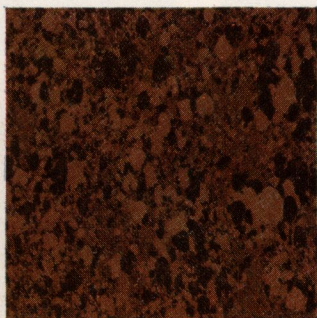
Chippewa Gray No. 703



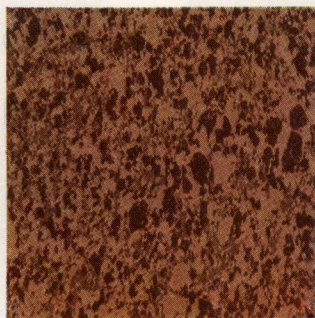
Waco Sand No. 702

corkstyle

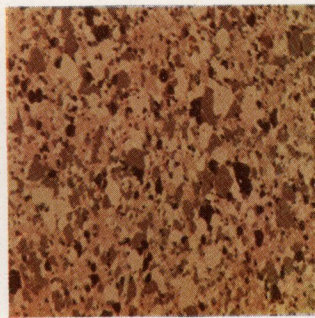
realistically captures the glowing color and rich texture of natural cork at a fraction of the cost of cork tile. This handsome design in Excelon is available in light, medium, and dark golden tones.



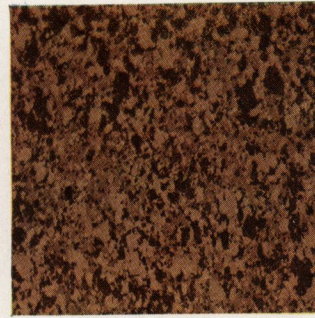
Dark Corkstyle No. 799*



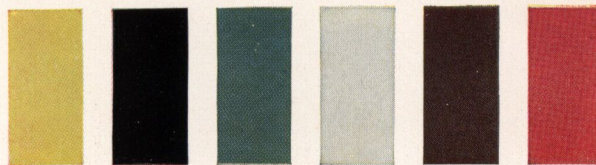
Medium Corkstyle No. 797*



Light Corkstyle No. 798*



Dark Medium Corkstyle No. 800*



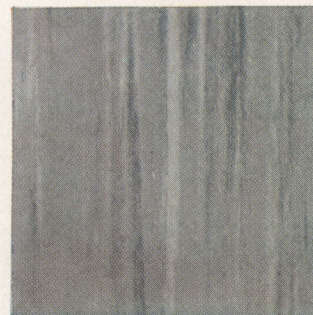
Yellow No. 793 Black No. 790 Green No. 794 White No. 791 Brown No. 795 Red No. 792

feature strips

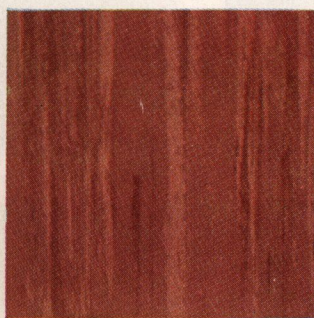
For smart border and accent effects, 1" feature strips are available in plain colors. Beveled edging, for finishing exposed edges of floors, is available in plain black.

designers series

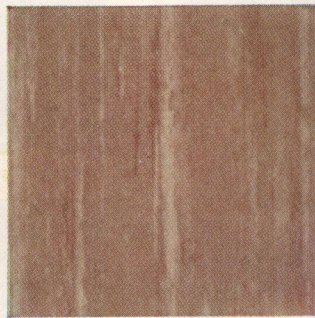
is a special group of delicate tone-on-tone colorings in Armstrong Excelon Tile. These softly shaded patterns reflect the quiet richness of today's most luxurious decorator stylings.



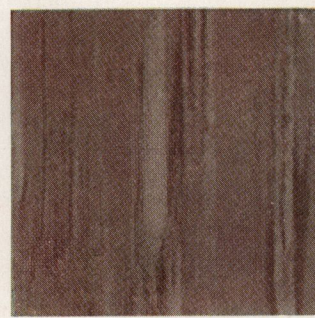
Silver Gray No. 761



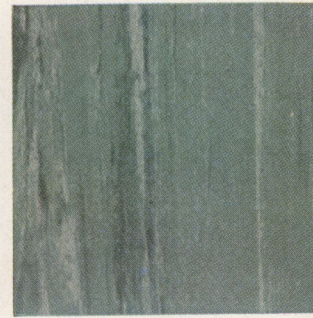
Sienna Copper No. 765



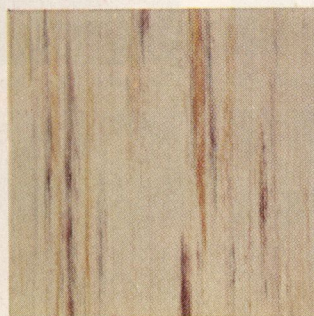
Sand Beige No. 762



Rose Taupe No. 763



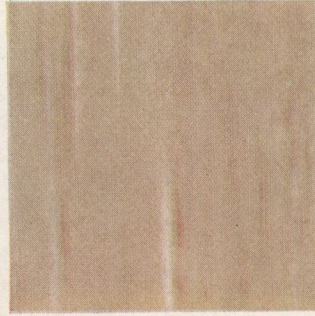
Mint Green No. 760



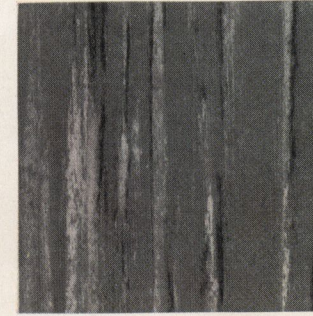
Ecu No. 767



Kasha Taupe No. 769†



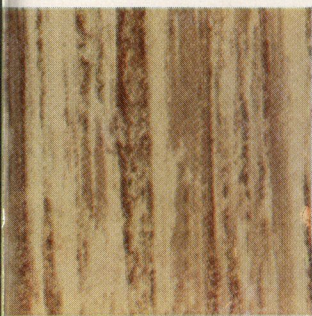
Ivory Tan No. 766†



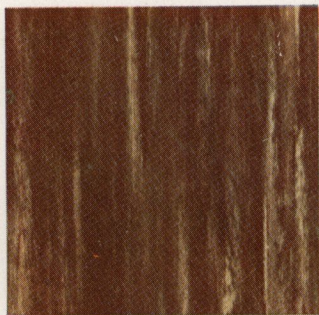
Mineral Gray No. 768†

*Service Gauge Only

† $\frac{1}{8}$ " Gauge Only



Light Woodtone No. 788



Dark Woodtone No. 789



Redwoodtone No. 796

woodtone

provides handsome wood-grain stylings which blend handsomely with any style of decoration. Used together, they can give the stylish effect of a luxurious parquet floor.



It is easy to create custom floor designs with Armstrong Excelon Tile

There's almost no limit to the variety of delightful, individual floor designs you can create by combining two or more colors or styles of Armstrong Excelon Tile in a single floor. Such designs as these are easy to work out. They can blend together all the elements in your color scheme—or even make small rooms seem larger. And, because Excelon Tile is put down block by block, most custom effects cost nothing extra. Your flooring dealer can help you plan designs especially suited to your own rooms.

Easy and economical to install, too

Excelon is the simplest, quickest, and most economical of all resilient floors to install. It comes in a choice of two thicknesses. Most colors are available in a thrifty Service Gauge—so flexible that it can be cut with scissors, and best for the home owner who plans to install the floor himself. Remarkably low in cost, Service Gauge Excelon is tough and durable—an ideal floor for normal residential areas. When extra durability is needed, choose $\frac{1}{8}$ " Excelon—available in Directional Graining, Woodtone, Designers Series, and in Feature Strip. Either Service Gauge or $\frac{1}{8}$ " Excelon can be installed at minimum cost by your dealer's professional mechanics.



Digitized by:



ASSOCIATION
FOR
PRESERVATION
TECHNOLOGY,
INTERNATIONAL
www.apti.org

BUILDING
TECHNOLOGY
HERITAGE
LIBRARY

DEAD LINK DELETED from ORIGINAL DOCUMENT

CURRENT GOOD LINK TO THIS DF is at

<https://inspectapedia.com/hazmat/Armstrong-Excelon-Tile-Catalog.PDF>