




Color choice for 1954

ARMSTRONG'S ASPHALT TILE

The Low-cost Floor with the Luxury Look® 

DE LUXE



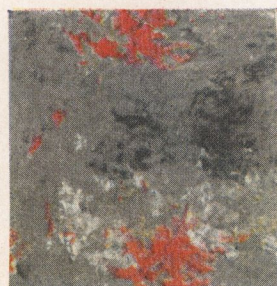
Goldenrod Marble
No. D-327



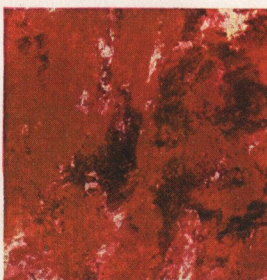
*Ebony Marble
No. B-305



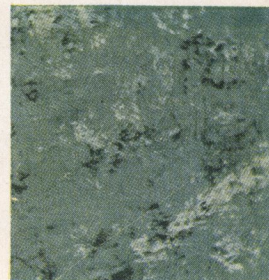
Ivory Marble
No. D-300



Cameo Gray Marble
No. C-361



*Cinnabar Marble
No. C-324



*Surf Green Marble
No. C-312



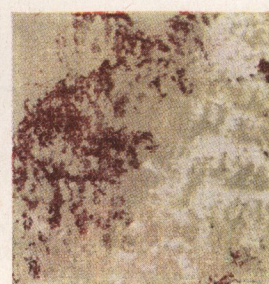
Tokay Marble
No. B-319



*Cedar Marble
No. B-318



Antique Green Marble
No. B-335



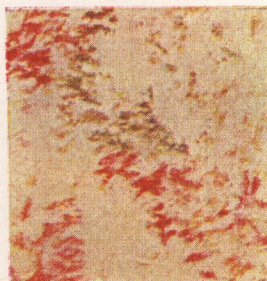
*Palomino Beige Marble
No. C-326



*Pearl Gray Marble
No. C-346



Gray Taupe Marble
No. C-347



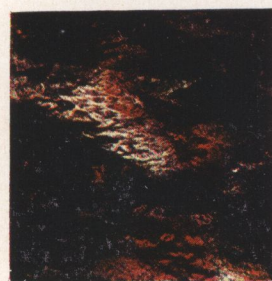
Tennessee Marble
No. D-342



Emerald Green Marble
No. C-317



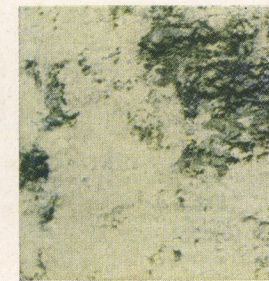
Pewter Gray Marble
No. C-344



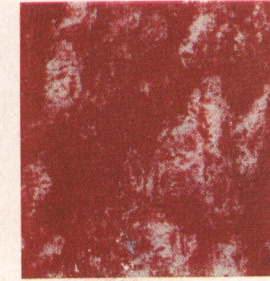
Agate Marble
No. B-336



Bermuda Blue Marble
No. D-354

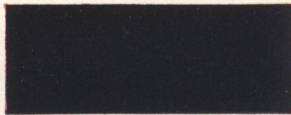


Seaspray Green Marble
No. D-311



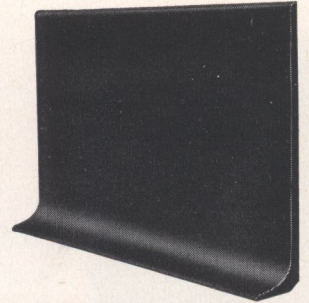
Corinthian Red Marble
No. D-364

ARMSTRONG'S TOP-SET ASPHALT COVE BASE

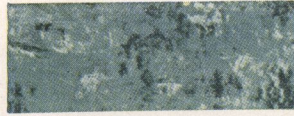


Black No. CB-210

The smooth, curved surface of Armstrong's Top-Set Asphalt Cove Base eliminates dirt-catching corners between floor and wall, making the floor easier to clean. Available in two plain colors, 4" and 6" heights, and three marble colors, 4" height only, as shown.



Havana No. CB-206



Surf Green No. CB-312



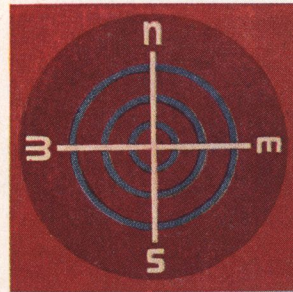
Palomino Beige No. CB-326



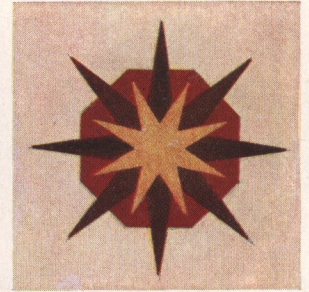
Cedar No. CB-318

ASPHALT TILE DIE-CUT INSETS

Insets add an original decorative touch to an asphalt tile floor at little extra cost. Armstrong's Die-Cut Insets are 18" x 18" in size. Easy to install, they require no special cutting on the job. Those shown are only part of the large selection of styles available.



Compass No. 502



Sunburst No. 506



Top Hat No. 515



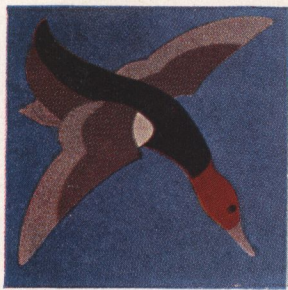
Sailboat No. 516



Pointer No. 511



Champagne No. 514



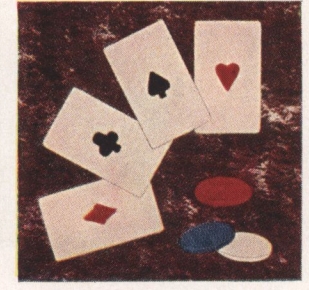
Wild Duck No. 500



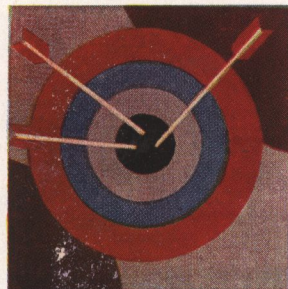
Cocktail No. 501



Sailfish No. 517



Four Aces No. 520



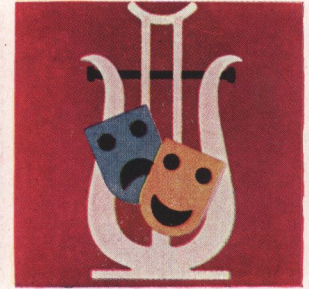
Target No. 508



Anchor No. 510



Siesta No. 521



Lyric No. 522

ARMSTRONG'S DE LUXE ASPHALT TILE

THE 19 COLORS AT THE LEFT make up the line of Armstrong's De Luxe Asphalt Tile. The distinctive swirl marbleization that gives each tile such rich beauty is the result of an exclusive manufacturing process developed by Armstrong research. This non-directional grain-ing helps to conceal tile joints and gives the floor a handsome over-all appearance unmatched by any other type of asphalt tile marbling.

The same manufacturing process that produces the unusual beauty of Armstrong's De Luxe Asphalt Tile also gives this line extra toughness and greater durability.

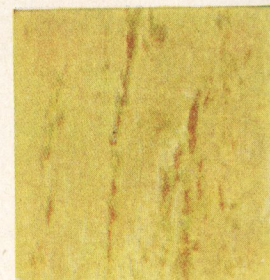
ARMSTRONG'S STANDARD ASPHALT TILE

THE 23 COLORS AT THE RIGHT show the complete color range in Armstrong's Standard Asphalt Tile. This line offers Armstrong quality at minimum cost and for use where straight-grained tile is required to meet specific decorative needs.

GENERAL INFORMATION. Both Armstrong's De Luxe Asphalt Tile and Standard Asphalt Tile are made in 9" x 9" tiles, 1/8" and 3/16" thick. De Luxe Asphalt Tile colors marked with an asterisk (*) are available in matching colors in Armstrong's Greaseproof Asphalt Tile.



Agate
No. B-936



Goldenrod
No. D-927



Any interior gains distinction with a custom floor designed from the wide range of colors in Armstrong's Asphalt Tile.



Venetian Red No. C-204



Yellow No. D-246



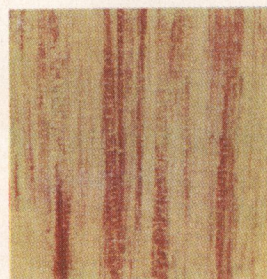
Light Green No. C-257



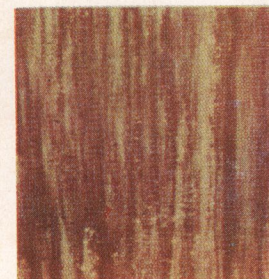
Garnet No. D-275

NEW WOOD TONES in Armstrong's Standard Asphalt Tile are shown at right. Distinctively styled, they are most effective when used singly to create a beautiful monochromatic floor effect.

FEATURE STRIPS are available in 1", 2", and 3" widths in the plain colors shown at left and in Black No. A-210 and White No. D-270.



Light Woodtone
No. D-970



Dark Woodtone
No. C-971

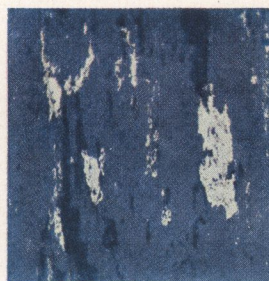
STANDARD



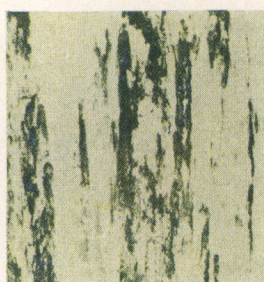
Gray Taupe
No. C-947



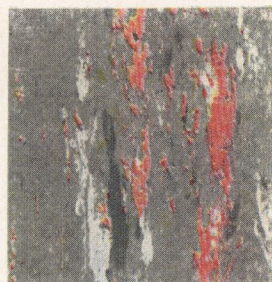
Tennessee
No. D-942



Lagoon Blue
No. D-952



Seaspray Green
No. D-911



Cameo Gray
No. C-961



Cinnabar
No. C-924



Pearl Gray
No. C-946



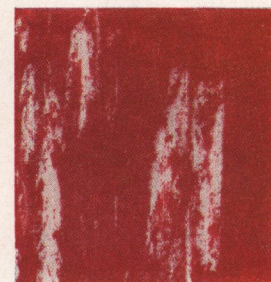
Pewter Gray
No. C-944



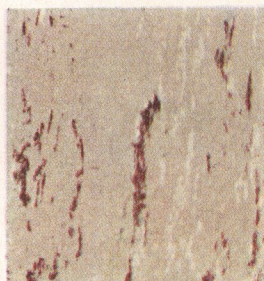
Ebony
No. B-905



Ivory
No. D-900



Corinthian Red
No. D-964



Palomino Beige
No. C-926



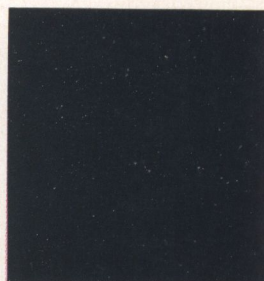
Jasper Green
No. C-907



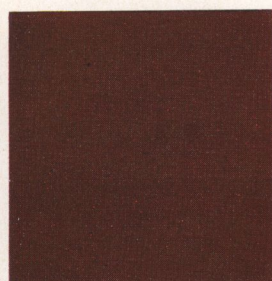
Foam Green
No. C-902



Antique Green
No. B-935



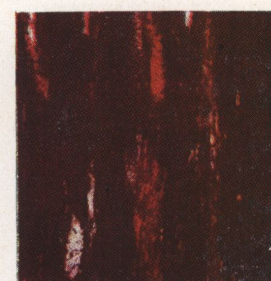
Black
No. A-210



Pompeian Red
No. A-200

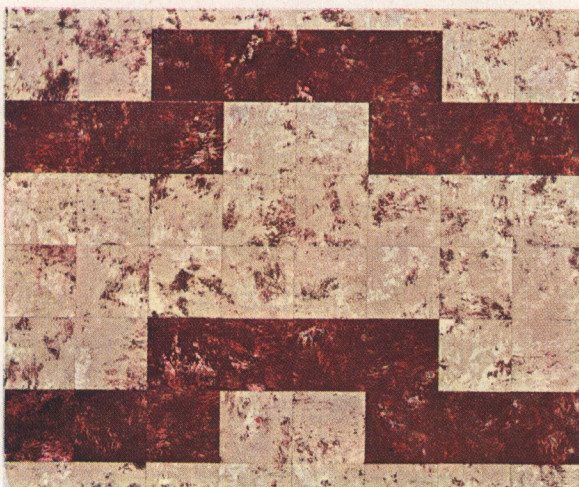
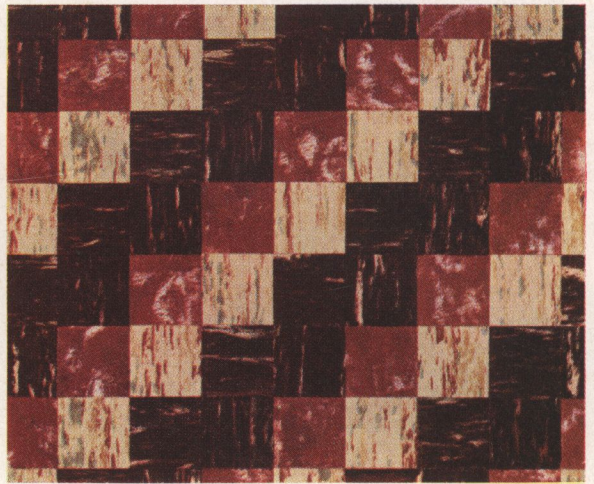
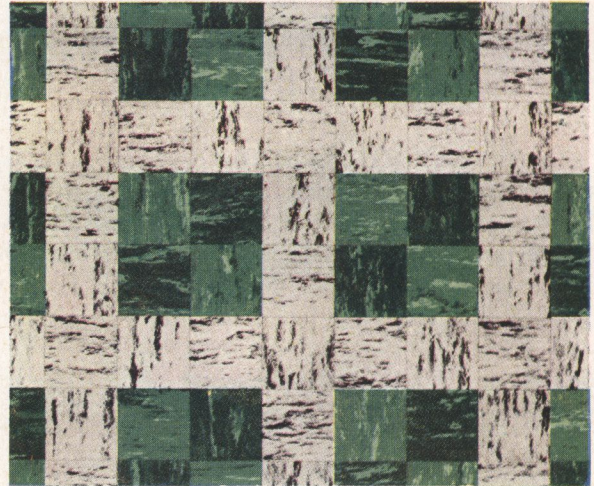
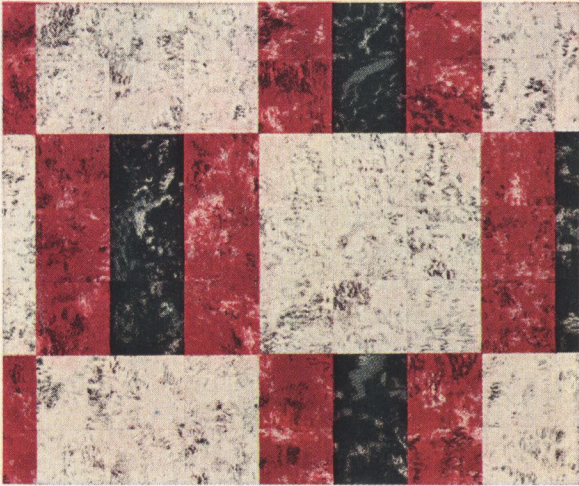


Tokay
No. B-919



Cedar
No. B-918

TYPICAL DESIGN POSSIBILITIES



Frey & Son
1000 North Prince St.
Lancaster, Pa.

TYPICAL DESIGN POSSIBILITIES

Digitized by



ASSOCIATION
FOR
PRESERVATION
TECHNOLOGY,
INTERNATIONAL
www.apti.org

BUILDING
TECHNOLOGY
HERITAGE
LIBRARY

DEAD LINKS REMOVED FROM THIS PAGE

CURRENT GOOD LINK for this PDF is at

<https://inspectapedia.com/hazmat/Armstrong-Asphalt-Asbestos-Floor-Tile-Catalog-1954.PDF>

Frey & Son
1000 North Prince St.
Lancaster, Pa.