

Color Choice for 1955



Armstrong *Asphalt Tile*

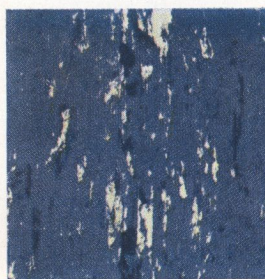
THE LOW-COST FLOOR WITH THE LUXURY LOOK®

Armstrong

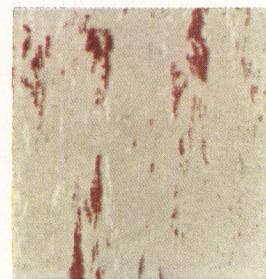
ASPHALT TILE

Here is the whole range of handsome, modern colors in Armstrong Asphalt Tile—colors that will blend harmoniously with any decorative scheme. The smooth, lustrous surface of this durable floor will stay bright and new looking for years. Dirt and dust whisk away quickly and easily. Even cigarette burns are readily removed. Armstrong Asphalt Tile is an ideal floor for basements and basementless houses, because it's unaffected by the normal alkaline moisture present in concrete subfloors.

GENERAL INFORMATION. Armstrong Asphalt Tile is made in 9" x 9" tiles, $\frac{1}{8}$ " and $\frac{3}{16}$ " thick. All colors marked with an asterisk (*) are also available in Armstrong Greaseproof Asphalt Tile.



Lagoon Blue
No. D-952



*Palomino Beige
No. C-926



Gray Taupe
No. C-947



*Cedar
No. B-918



*Cinnabar
No. C-924



Antique Green
No. B-935



Ivory
No. D-900



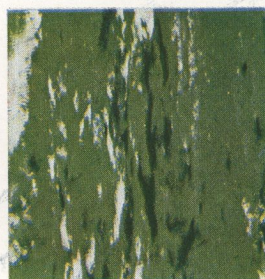
*Pearl Gray
No. C-946



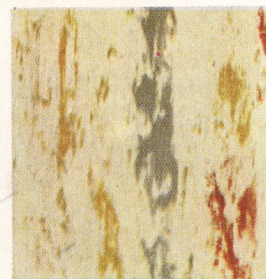
Cameo Gray
No. C-961



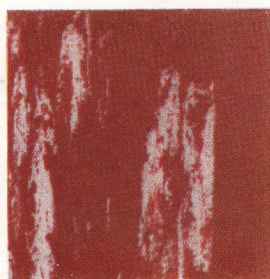
Tokay
No. B-919



*Foam Green
No. C-902



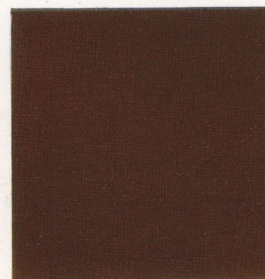
Tennessee
No. D-942



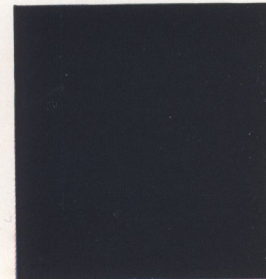
Corinthian Red
No. D-964



*Ebony
No. B-905



Pompeian Red
No. A-200



Black
No. A-210

FEATURE STRIPS. Striking accent colors may be used to give your floors of Armstrong Asphalt Tile special individuality. Use them to outline borders around the perimeter of a room or to set off floor areas where rugs are used. Armstrong Asphalt Tile Feature Strips are available in 1", 2", and 3" widths and in these 6 colors.



White No. D-270



Yellow No. D-246



Light Green No. C-257



Garnet No. D-275



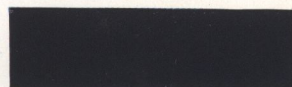
Venetian Red No. C-204



Black No. A-210

TOP-SET ASPHALT COVE BASE

The smooth, curved surface of Armstrong Top-Set Asphalt Cove Base gives rooms a trim, "finished" look. It eliminates dirt-catching corners, makes cleaning easier. Available in two colors, in 4" and 6" heights.



Black No. CB-210



Havana No. CB-206

ASPHALT TILE DIE-CUT INSETS

Armstrong Die-Cut Insets are 18" x 18" in size. Easy and economical to install, they require no special cutting on the job. Those shown here are only part of the large assortment of styles available.



Top Hat No. 515



Sandtrap No. 523



Pointer No. 511



Champagne No. 514



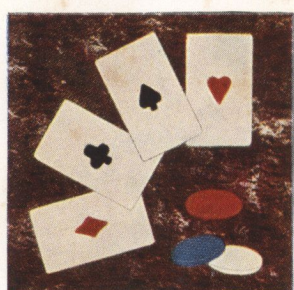
Wild Duck No. 500



Cocktail No. 501



Sailfish No. 517



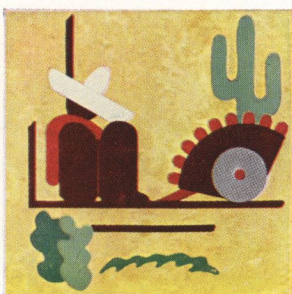
Four Aces No. 520



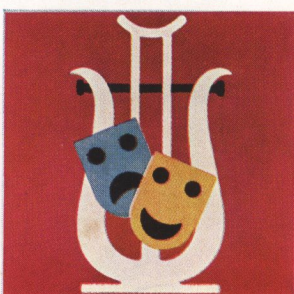
Palm Tree No. 524



Anchor No. 510



Siesta No. 521



Lyric No. 522



Goldenrod
No. D-927



Agate
No. B-936



Seaspray Green
No. D-911



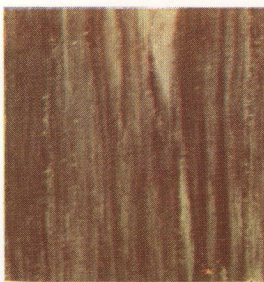
Pewter Gray
No. C-944



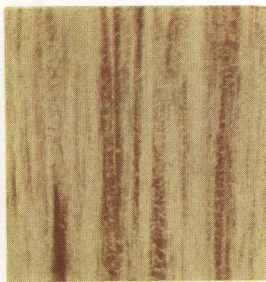
Jasper Green
No. C-907

**TWO HANDSOME WOOD TONES IN
ARMSTRONG ASPHALT TILE**

The rich woodtone stylings, shown at the right, can be used to create smart parquetry effects. Equally handsome in a floor with a single color or with both colors combined.



Dark Woodtone
No. C-971



Light Woodtone
No. D-970



Use one color wall-to-wall, or combine colors as you wish. Floor designs are almost limitless with Armstrong Asphalt Tile, since tiles are laid block by block.



This modern room shows how the handsome, custom-designed look of Armstrong Flagstone Asphalt Tile lends character and distinction to today's interiors.

EASY INSTALLATION. The shaped, precision-cut tiles fit into 18" x 18" "mortar" grids. No costly hand cutting is necessary . . .



installation is fast and economical. This view graphically demonstrates the revolutionary grid principle. When installed, the tiles along all sides of each grid interlock with the adjoining grid.

Armstrong FLAGSTONE ASPHALT TILE

Here's a floor that fits right into the pattern of modern living . . . it has a free-flowing, "outdoor" look that's especially appropriate for ranch-type houses, enclosed porches, and open-plan living areas. It's suitable for installation in basements, too. "Flagstone"* costs far less than a similar custom floor, hand-cut on the job. Since the pieces are factory-cut, they fit easily into position. Available in three color combinations.



No. 1081



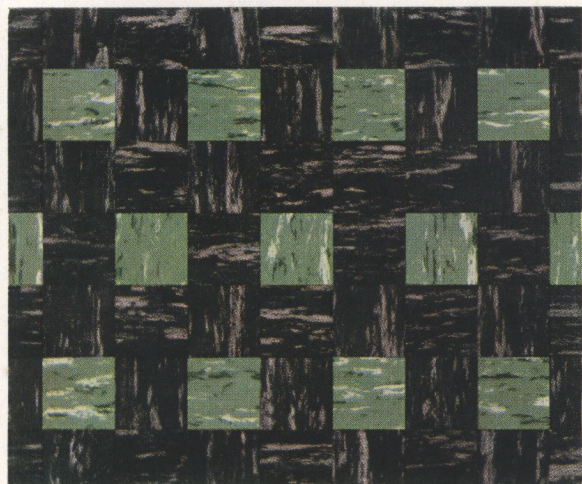
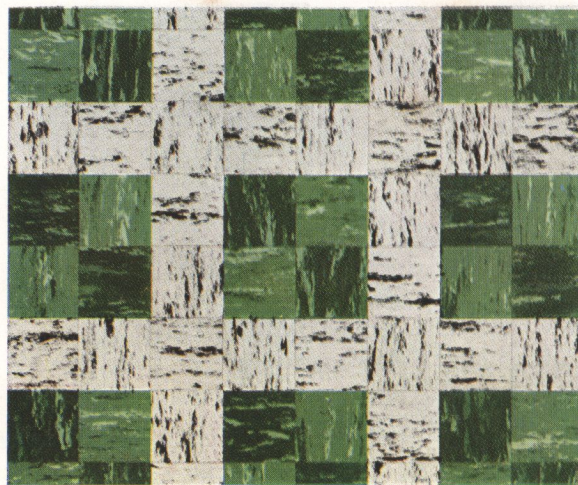
No. 1082



No. 1080

TYPICAL DESIGN POSSIBILITIES

It's easy to create a distinctive floor with Armstrong Asphalt Tile. Countless designs are possible by combining the various colors. Since this floor is laid block by block, you get the advantages of custom styling at no extra cost. All colors in Armstrong Asphalt Tile have been especially styled so that they harmonize with each other when combined in floor designs.



PIERSOL COMPANY, INC.

24 EAST KING ST.

LANCASTER, PA. PHONE 6251

TYPICAL DESIGN
POSSIBILITIES

It's e
strong
possib
this f
advan
All co
espec
each

Digitized by



ASSOCIATION
FOR
PRESERVATION
TECHNOLOGY,
INTERNATIONAL
www.apti.org

BUILDING
TECHNOLOGY
HERITAGE
LIBRARY

<https://archive.org/details/buildingtechnologyheritagelibrary>

From the collection of:

Mike Jackson, FAIA

PIERSOL COMPANY, INC.

24 EAST KING ST.

LANCASTER, PA. PHONE 6251