

21,328

Hubbell

Rev. 1918

HUBBELL ELECTRICAL CATALOGUE

621,328



Western Electric Company
Eleventh & York Sts., Philadelphia, Pa.

Electrical Specialties

Catalogue and Price List No. 9. August, 1906

Prices subject to change without notice. All previous prices on goods mentioned in this Catalogue are hereby canceled.

Manufactured by

Harvey Hubbell, Incorporated

Main Office and Factory, Bridgeport, Conn.

New York

Chicago

San Francisco



INTRODUCTORY

IN PRESENTING to the trade this, our 1906 catalogue we call particular attention to the many new specialties shown herein, all of which are the result of careful thought and experiment. They are original in design, practical and unequaled in their class.

With increased facilities and close attention to the minutest detail, the high reputation of the superior quality that has characterized the Hubbell Line in the past, will be maintained in the future.

HARVEY HUBBELL, Inc.

Bridgeport, Conn., August 1906



TELEGRAPHIC CODE

An illustration of two telegraph poles connected by several horizontal wires. The poles are positioned on the left and right sides of the page, with the wires stretching across the top and middle sections. The poles have cross-arms with small insulators or markers. The entire scene is enclosed within a rounded rectangular border.

To avoid liability of error, customers are requested to use code words, as far as possible, in telegraphing for goods, also for information relative to quotations or shipments.

Telegraphic Code

QUESTIONS

GENERAL

Gesto	Write us full particulars regarding.
Gloria	Advise by mail.
Gratus	Advise by telegraph.
Gravis	Do the best you possibly can.
Grex	This is important.

ORDERS

Obeo	Ship by freight.
Obruo	Ship by freight prepaid.
Obvius	Ship by freight with sight draft attached to bill of lading.
Odium	Ship by express.
Olim	Ship by express prepaid.
Onero	Ship by express C. O. D.
Opes	Add to our order No. . . .
Opus	Cancel our order No. . . .
Oram	Duplicate our order No. . . .
Orbis	Change our order No. . . . to read,
Oris	Hold our order No. . . . awaiting further instructions.

Otium	Shipping instructions to follow.
Ovum	Do not proceed with our order No. . . until further advised.

SHIPMENTS

Saltus	Have you shipped our order No. . . .
Sancio	When will you ship our order No. . . .
Sano	Trace shipment of our order No. . . .
Schola	Ship what you can immediately, and let balance follow.
Scindo	Advise by telegraph if you cannot ship, in one week, our order No. . . .
Statin	When can you make first shipment, and when balance of our order No. . .

PRICES

Palam	At what price can you furnish.
Parco	Quote us by mail.
Parens	Quote us by telegraph.
Pilum	Have you in stock.
Posco	How soon could you furnish us with.

Telegraphic Code—Continued

ANSWERS

GENERAL

Gades	Your financial standing being unknown to us, we shall send goods C. O. D. unless advised to the contrary.
Galba	Your financial standing being unknown to us, we shall send goods sight draft attached to bill of lading, unless advised to the contrary.
Gallia	Your financial standing is unknown to us. Will you kindly send us references?
Gelu	In reference to your telegram of
Gener	In reference to our telegram of
Genu	In reference to your letter of
Gero	In reference to our letter of

ORDERS

Oclor	Too late to cancel order.
Onus	Your order not plain. Send duplicate with full particulars.
Ordo	Send shipping instructions for your order No. . . .

SHIPMENTS

Saepe	Your order shipped by express.
Salus	Your order shipped by freight.
Satis	Will ship your order by express.
Scriba	Will ship your order by freight.
Sedes	Partial shipment of your order made.
Silva	Completing shipment of your order made.
Solus	Will ship balance of your order.
Spero	Will advise later regarding balance.
Stella	First shipment of your order will be made.
Super	Shall we ship portion of your order at once, or hold for completing shipment?

PRICE

Palus	Cannot give better price.
Pecus	Cannot accept at price mentioned.
Pomum	Have none in stock.
Porta	Can ship at once if advised immediately.
Probe	Can make partial shipment at once, balance in.

8



Special Finishes

To meet the demand for special finished electrical goods, we carry a stock of the most popular finishes, such as old brass, oxidized copper, polished gilt, etc.

We are prepared to furnish, upon short notice, such other finishes as those mentioned on opposite page.

It is well to submit a sample when placing order for finishes that are not standard.

We believe the fixture house and contractor will value the securing of special finished goods without delay, thereby saving the great expense of refinishing the article after it has been assembled.

List of Special Finishes

Code Word	Finish No.	Finish	Code Word	Finish No.	Finish
Flowerer	1	Polished Brass.	Floygene	16	Polished Steel.
Flowerage	2	Old Brass.	Fluate	17	Nickel-Plate.
Floweret	3	Old English Bronze.	Fluavil	18	Oxidized Silver.
Flowerful	4	Antique or Flemish Brass.	Flucan	19	Butler's Silver.
Flowering	5	Oxidized Brass.	Fluce	20	Wrought Iron.
Flowerless	6	Gilt.	Flecto	21	Bauer Barff.
Flowery	7	English Bronze.	Fleo	22	Acid or Statuary Bronze.
Flowing	8	Satin Gold.	Fletus	23	Lemon Brass.
Flowingly	9	Etruscan Gilt.	Flo	24	Ormulu or French Gilt.
Flowk	10	Gold Bronze.	Florens	25	Burnished Gilt.
Flowkwort	11	Mottled Copper.	Fluctus	26	Polished Silver.
Flown	12	Oxidized Copper.	Flumen	27	Pompeiiian Bronze.
Flowretry	13	Antique Copper or Japanese Bronze.	Fluo	28	Roman or Dull Gold.
Flowte	14	Polished or Hardware Bronze.	Flagito	29	Gun Metal.
Flox	15	Polished Copper.	Fluvius	30	Sand Blast, Ant. Brass.
			Floreo	31	Sand Blast, Old Brass.

Hubbell Pull Sockets

with Extension Eyelet

Standard Length of Chain on each Socket 8 inches

10

Code Word	List No.	Sched-ule	Std. Pkg.	Pkg. Weight	Price
Obsisto	3/4 inch Extension Eyelet . . .			16 lbs.	
Obedio	1 " " " . . .			16 "	
Obicio	1 1/4 " " " . . .			17 "	
Obses	1 1/2 " " " . . .			17 "	
	Edison, T. H. or West. Socket, fitted with Extension Eyelet, add to list,	A or B	50		\$.12

For separate chains not attached to socket, see page 114
 For special finishes " " 116

Hubbell Pull Sockets

with Extension Eyelet

Patented August 11, 1895; May 8, 1900; July 30, 1901; February 17, 1903;
April 10, 1906

National Electrical Code Standard

Our Extension Eyelet permits the use of the Pull Socket with husks or other fixtures in which the limited space will not admit of the use of our regular Socket.

Unless otherwise specified, sockets with one inch extension will be furnished.

See opposite page for prices



Hubbell Pull Sockets

Standard Length of Chain on each Socket 8 inches

12

Code Word	List No.		Schedule	Std. Pkg.	Pkg. Weight	Price
Obtrude	35000	Edison Pull Socket, $\frac{3}{8}$ inch cap	B	250	64 lbs.	\$. . .
Obtrunco	35001	" " " $\frac{3}{8}$ "	B	100	28 "	" . . .
Obtruding	35002	T. H. " " $\frac{3}{8}$ "	A	100	23 "	" . . .
Obtrudamus	35003	" " " $\frac{3}{8}$ "	A	50	14 "	" . . .
Obtrudunt	35004	West. " " $\frac{3}{8}$ "	A	50	13 "	" . . .
Obtrivisti	35005	" " " $\frac{3}{8}$ "	A	50	14 "	" . . .

Sockets furnished with chains over 8 in.
in length add to list, per foot

For separate chains not attached to socket, see page 114
For special finishes " " 116

Hubbell Pull Sockets

Patented August 11, 1896; May 8, 1900; July 30, 1901;
February 17, 1903; April 10, 1906

National Electrical Code Standard

The Pull Socket is not only acknowledged to be the most convenient and economical, but also superior.

When the Socket is not within easy reach, it is indispensable.

The chain may be of any length.

See opposite page for prices



No. 35000

Hubbell Pull Wall Sockets

Standard Length of Chain on each Socket 8 inches

Code Word	List No.	Description	Schedule	Std. Pkg.	Pkg. Weight	Price
14 Obtrusive	35006	Edison Pull Wall Socket . . .	B	100	30 lbs.	\$.70
Obtrusion	35007	T. H. " " " . . .	A	50	14 "	.70
Obtrituros	35008	West. " " " . . .	A	50	15 "	.70

Sockets furnished with chains over 8 inches in length add to list, per foot, .10

For separate chains not attached to socket, see page 114

For special finishes, " " 116

Hubbell Pull Wall Sockets

Patented August 11, 1896; May 8, 1900; July 30, 1901; February 17, 1903;
April 10, 1906

National Electrical Code Standard

The Pull Wall Socket is more desirable than the Key Wall Socket, as it can be placed higher on the wall, yet be within easy reach by means of the chain.

See opposite page for prices



No. 35006

Hubbell Pull Wall Sockets

with Concealed Brass Base

Standard Length of Chain on each Socket 8 inches

16

Code Word	List No.		Sched-ule	Std. Pkg.	Pkg. Weight
Oblatus	35028	Edison Wall Socket, Concealed Base	B	100	36 lbs.
Oblisti	5029	T. H. " " " "	A	50	17 "
Oblit	5030	West. " " " "	A	50	18 "

Sockets furnished with chains over 8 inches in length add to list, per foot

For separate chains not attached to socket, see page 114

For special finishes " " 116

Hubbell Pull Wall Sockets

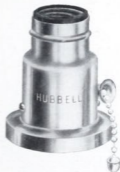
with Concealed Brass Base

Patented August 11, 1896; May 8, 1900; July 30, 1901; February 18, 1903;
April 10, 1906

National Electrical Code Standard

This Pull Wall Socket is the same in every respect as that illustrated on page 15, except the porcelain base is furnished with a brass covering.

See opposite page for prices



No. 35028

Hubbell Pull Rosette Sockets

Standard Length of Chain on each Socket 8 inches

Code Word	List No.		Schedule	Std. Pkg.	Pkg. Weight	Price
Obtrivimus	35009	Edison Concealed	B	20	15 lbs.	\$1.10
Obtulisset	35010	" Cleat	B	20	15 "	1.10
Obtulisti	35011	" Square Moulding	B	20	15 "	1.10
Flyte	35018	" Combination	A	20	15 "	1.10
Obtundendo	5012	T. H. Concealed	A	20	15 "	1.10
Obtudent	5013	" Cleat	A	20	15 "	1.10
Obtuendum	5014	" Square Moulding	A	20	15 "	1.10
Flytail	5019	" Combination	A	20	15 "	1.10
Laadboon	5015	West. Concealed	A	20	15 "	1.10
Laadbus	5016	" Cleat	A	20	15 "	1.10
Laadgat	5017	" Square Moulding	A	20	15 "	1.10
Flywheel	5020	" Combination	A	20	15 "	1.10

Sockets furnished with chains over 8 in.
in length, add to list, per foot, .10

For separate chains not attached to socket, see page 114
For special finishes " " 116

Hubbell Pull Rosette Sockets

Patented August 11, 1896; May 8, 1900; July 30, 1901;
February 17, 1903; April 10, 1906

National Electrical Code Standard

The Rosette Socket is the same as the Wall Socket described on preceding page, except it is mounted on a K. W. base.

When long chains are required, special adjustment of socket mechanism is necessary, and should be made to order

See opposite page for prices



No. 35009

Hubbell Pull Angle Wall Sockets

Standard Length of Chain on each Socket 8 inches

20

Code Word	List No.		Sched-ule	Std. Pkg.	Pkg. Weight
Obtempo	35021	Edison Pull Angle Wall Socket	B	50	21 lbs.
Obting	5022	T. H. " " " "	A	50	20 "
Obtrecto	5023	West. " " " "	A	50	21 "

Sockets furnished with chains over 8 in.
in length add to list, per foot

For separate chains not attached to socket, see page 114
For special finishes " " 116

Hubbell Pull Angle Wall Socket

Patented August 11, 1896; May 8, 1900; July 30, 1901;
February 17, 1903; April 10, 1906

National Electrical Code Standard

The Angle Wall Socket is intended for use in
place of the Wall Socket, where it is desirable to
have the lamp stand at an angle.

See opposite page for prices



No. 35021

Hubbell Pull Socket

With Lamp Base Attachment

Standard Length of Chain on each Socket 8 inches

22

Code Word	List No.		Sched-ule	Std. Pkg.	Pkg. Weight	Price
Obtego	5024	Edison Pull Socket with Lamp Base Attachm't	F	50	13 lbs.	\$.70
Obturpo	5025	T. H. " " " " " "	F	50	14 "	.70
Obturbo	5026	West. " " " " " "	F	50	13 "	.70
Sockets furnished with chains over 8 inches in length add to list, per foot10

For separate chains not attached to socket, see page 114
 For special finishes " " 117

Hubbell Pull Socket

with Lamp Base Attachment

Patented August 11, 1896; May 8, 1900; July 30, 1901;
February 17, 1903; April 10, 1906

National Electrical Code Standard

The Pull Socket with Lamp Base Attachment can be attached to an ordinary Key Socket or Receptacle.

Tools or the services of an electrician are not required.

See opposite page for prices



No. 5024

Hubbell Candelabra Pull Socket

Standard Length of Chain on each Socket 3 inches

24

Code Word	List No.	Sched-ule	Std. Pkg.	Pkg. Weight	Price
Obsto	5455	M	50	5 lbs.	\$.60
		Sockets furnished with chains over 3 inches in length add to list, per foot10

For special finishes, see page 117

Hubbell Candelabra Pull Socket

Patented August 11, 1896; May 8, 1900; July 30, 1901;
February 17, 1903; April 10, 1906

National Electrical Code Standard

The same mechanism employed in our regular Socket is embodied in the Hubbell Candelabra Pull Socket.

It is the first device in the Candelabra line in which there is a Socket and Switch combined.

This Candelabra Socket has met with instant favor, and has been the means of bringing out new ideas in ornamental fixture work among the fixture manufacturers, for whom it was specially designed.

See opposite page for prices



No. 5455

Hubbell Candelabra Extension

26

Code Word	List No.		Sched- ule	Std. Pkg.	Pkg. Weight	Price
Edo	5481	Candelabra Extension . . .	M	50	1 lb.	\$.35
Enim	5482	" Collar	M	50	1 "	.05
Etsi	5483	" Candle	M	50	2 "	.15

For special finish collar, see page 117

Hubbell Candelabra Extension

National Electrical Code Standard

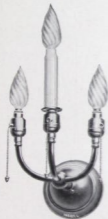
The Candelabra Extension—an adjunct to our Candelabra Socket—may be used on any device fitted with a candelabra base.

Its terminals are connected by a brass tube, heavily insulated, making the rigidity so essential in candelabra work.

This extension is designed to take a four-inch candle, and is sold complete with Socket, or separately, as listed.

The accompanying cut illustrates the Extension, complete with Candelabra Socket.

See opposite page for prices



Side Wall Bracket showing use
of Candelabra Extension



Candelabra
Extension
No. 5481



Candle
No. 5843



Collar
No. 5482

Hubbell Pull Switch

Standard Length of Chain on each Switch 8 inches

28

Code Word	List No.		Schedule	Std. Pkg.	Pkg. Weight	Price
Obtusio	5027	5 Ampere Pull Switch	F	50	14 lbs.	\$.60
		Switch furnished with chain over 8 in. in length add to list, per foot				10

For separate chains not attached to switch, see page 114

For special finishes " " 117

Hubbell Pull Switch

Patented August 11, 1896; May 8, 1900; July 30, 1901; February 17, 1903;
April 10, 1906

The Pull Switch is a handy device for a variety of purposes, as it can be placed at any height, yet easily operated by means of the chain, which may be of any desired length.

The same mechanical features employed in our Socket are embodied in this Switch.

See opposite page for prices



No. 5027

Hubbell Incandescent Light Attachment for Oil Lamps

"The Dazzlite"

30

Code Word	List No.		Sched- ule	Std. Pkg.	Pkg. Weight	Price
Dilator	5403	Ed. Dazzlite, with Plug, and 7 ft. Silk Cord	F	20	15 lbs.	\$2.00
Duratum	5404	T. H. Dazzlite	F	20	15 "	2.00
Ductus	5405	West. "	F	20	15 "	2.00
Decem	5529	Ed. Dazzlite, without Cord or Plug	F	20	10 "	1.50
Decet	5530	T. H. " " " "	F	20	10 "	1.50
Decus	5531	West. " " " "	F	20	10 "	1.50

For special finishes see page 117

Hubbell Incandescent Light Attachment for Oil Lamps

"The Dazzlite"

Manufactured under the Hufschmidt patent, December 16, 1902

The Dazzlite is a practical and inexpensive attachment for converting an oil lamp into an electric.

The base of the Socket (as per illustration) is easily and quickly fitted to any lamp with a common burner, be it either flat wick or central draft.

It does not injure the lamp in any way, and requires no tools to attach or detach.

When sold, complete, same is fitted with 7 feet of silk parallel lamp cord and our regular plug.

See opposite page for prices



No. 5403-

Hubbell Edison Adapters

Code Word	List No.		Sched- ule	Quantity	Weight	Price Net per M
Addo	5472	Edison Adapter for T. H. Sockets 200 per box		500-1000	18 to 36 lbs.	\$18.00
"	5472	Edison Adapter for T. H. Sockets 200 per box		1000-3000	36 to 110 "	17.00
"	5472	Edison Adapter for T. H. Sockets 200 per box		3000-5000	110 to 180 "	16.00
"	5472	Edison Adapter for T. H. Sockets Bulk		5000	160 "	15.00
"	5488	Edison Adapter for West. Sockets 200 per box		500-1000	11 to 22 "	13.00
"	5488	Edison Adapter for West. Sockets 200 per box		1000-3000	22 to 66 "	12.00
"	5488	Edison Adapter for West. Sockets 200 per box		3000-5000	66 to 110 "	11.00
"	5488	Edison Adapter for West. Sockets Bulk		5000	85 "	10.00

Hubbell Edison Adapter

Patented April 10, 1906

The Hubbell Edison Adapter, when attached, gives a T. H. Socket every appearance of a straight Edison, and can be detected only upon close inspection.

They act as a permanent connection, yet can be removed, if desired.

See opposite page for prices



No. 5472

Hubbell Attachment Plug

34

Code Word	List No.		Sched- ule	Std. Pkg.	Pkg Weight	Price
Paco	5406	Edison Attachment Plug, Porcelain Cap	H	100	28 lbs.	\$.30
Palpo	5407	T. H. " " " "	H	100	31 "	.30
Pandor	5408	Edison " " Composition "	H	100	26 "	.35
Pector	5409	T. H. " " " "	H	100	30 "	.35
Prendo	5410	Edison " " Brass Covered "	H	100	29 "	.40
Pulvis	5411	T. H. " " " " "	H	100	33 "	.40
		Plugs furnished with tinted porcelain, red, green or yellow, add to list10

For special finished brass covered caps, see page 117
 For separate caps " " 72-74

Hubbell Attachment Plug

All Porcelain Fuseless; 300 Volts, 3 Ampere

Patented August 16, 1892; November 8, 1904

National Electrical Code Standard

This Plug is of the separable type and is made up of a cap and base, the former being interchangeable but one base is required for a variety of purposes.

The separate cap obviates all twisting of the cord which was the main objection in the old style plug.

The contact is made on the knife switch principle, and the terminals are enclosed in separate cells.

Finished in porcelain, hard rubber or brass covered caps.

See opposite page for prices



No. 5406

Hubbell Composition Attachment Plug

36

Code Word	List No.		Schedule	Std. Pkg.	Pkg. Weight	Price
Padus	5467	Edison Composition Attachment Plug	H	100	23 lbs.	\$.50
Pagas	5489	T. H. " " "	H	100	27 "	.50
Puella	5468	Edison Composition Attachment Plug Brass Covered Cap	H	100	25 "	.60
Pando	5490	T. H. Composition Attachment Plug Brass Covered Cap	H	100	29 "	.60

For special finished brass covered cap, see page 117

For separate caps " " 72-74

Hubbell Composition Attachment Plug

Patented August 16, 1902; November 8, 1904

This Plug is identical with our No. 5406, except that it is made in composition instead of porcelain.

The plug is practically non-destructible and is specially adapted for use in mills or factories, in fact any place where a device of this kind is subjected to hard usage.

See opposite page for prices



No. 5407

Hubbell Attachment Plug

for Reenforced Cord

Code Word	List No.		Schedule	Std. Pkg.	Pkg. Weight	Price
Par	5491	Edison Plug for Reenforced Cord, Porcelain	H	50	15 lbs.	\$.60
Paris	5492	T. H. Plug for Reenforced Cord, Porcelain	H	50	17 "	.60
Parcus	5493	Edison Plug for Reenforced Cord, Composition	H	50	16 "	.80
Parentio	5494	T. H. Plug for Reenforced Cord, Composition	H	50	18 "	.80

For special finished brass covered caps, see page 117

Hubbell Attachment Plug

for Reenforced Cord

Patented August 16, 1892; November 8, 1904

National Electrical Code Standard

This Plug is practically the same as our No. 5410, excepting the brass covered cap is fitted with a bushing to take reenforced cord.

See opposite page for prices



No. 5493

Hubbell Chandelier Plug

without Casing

40

Code Word	List No.		Sched-ule	Std. Pkg.	Pkg. Weight	Price
Pluto	5323	Chandelier Plug, Porcelain Cap . . .	H	20	6 lbs.	\$.45
Plus	5324	" " Composition Cap . .	H	20	6 "	.50
Positus	5422	" " Brass Covered Cap .	H	20	6 "	.55

For special finish brass covered caps, see page 117
 For separate caps " " 72-74

Hubbell Chandelier Plug

without Casing

Patented August 16, 1892; November 8, 1904

National Electrical Code Standard

The Chandelier Plug is a modification of our regular Attachment Plug, and is intended to be used in a ball or sphere at the bottom of the chandelier or cluster.

It is particularly desirable on a chandelier for a reading lamp or fan, where the current can be tapped without displacing the lamp.

The base is interchangeable with the regular caps.

See opposite page for prices



No. 5323

Hubbell Chandelier Plug

with Brass Casing

42

Code Word	List No.		Schedule	Std. Pkg.	Pkg. Weight	Price
Pluvia	5325	Chandelier Plug, Porcelain Cap . . .	H	20	6 lbs.	\$.70
Plodo	5326	" " Composition " . . .	H	20	6 "	.75
Paratio	5423	" " Brass Covered Cap .	H	20	6 "	.80

For special finish casing and brass covered caps, see page 117
 For separate caps " " 72-74

Hubbell Chandelier Plug

with Brass Casing

Patented August 16, 1892; November 8, 1904

National Electrical Code Standard

This Plug is the same in every respect as the Plug shown on page 41, except that it is furnished with a brass casing. Caps are interchangeable with all plugs.

See opposite page for prices



No. 5423

Hubbell Chandelier Plug

with $\frac{3}{8}$ Inch Socket Nipple

44

Code Word	List No.		Schedule	Std. Pkg.	Pkg. Weight	Price
Parvus	5495	Chandelier Plug, Porcelain Cap . . .	H	20	7 lbs.	\$.80
Partus	5496	" " Composition " . . .	H	20	7 "	.85
Pastor	5497	" " Brass Covered Cap .	H	20	7 "	.90

For special finish casing and brass covered caps, see page 117

For separate caps " " 72-74

Hubbell Chandelier Plug

with $\frac{3}{8}$ Inch Socket Nipple

Patented August 16, 1892; November 8, 1904

National Electrical Code Standard

This Plug is similar to that illustrated on page 43, excepting the top or base is fitted with a $\frac{3}{8}$ inch socket nipple.

This arrangement is quite desirable on a variety of fixture work, and practically completes a system of plugs for chandeliers.

See opposite page for prices



No. 5497

Hubbell Flush Attachment Plug

without Cover

46

Code Word	List No.		Sched-ule	Std. Pkg.	Pkg. Weight	Price
Pallens	5415	Flush Attachment Plug, without Cap, with $4\frac{1}{2}$ x $2\frac{3}{4}$ plate	H	50	38 lbs.	\$1.25
Pansus	5416	Flush Attachment Plug, with Porcelain Cap, with $4\frac{1}{2}$ x $2\frac{3}{4}$ plate	H	50	42 "	1.40
Pacta	5417	Flush Attachment Plug, with Composition Cap, with $4\frac{1}{2}$ x $2\frac{3}{4}$ plate	H	50	41 "	1.45
Pondo	5418	Flush Attachment Plug, with Brass Covered Porcelain Cap, with $4\frac{1}{2}$ x $2\frac{3}{4}$ plate	H	50	43 "	1.50
Pontus	5443	Flush Attachment Plug, without Cap, with $2\frac{1}{2}$ x $4\frac{1}{4}$ plate	H	50	38 "	1.25
Pleno	5444	Flush Attachment Plug, with Porcelain Cap, with $2\frac{1}{2}$ x $4\frac{1}{4}$ plate	H	50	42 "	1.40
Provo	5445	Flush Attachment Plug, with Composition Cap, with $2\frac{1}{2}$ x $4\frac{1}{4}$ plate	H	50	41 "	1.45
Pulcrum	5446	Flush Attachment Plug, with Brass Covered Porcelain Cap, with $2\frac{1}{2}$ x $4\frac{1}{4}$ plate	H	50	43 "	1.50

Polished brass, old brass, polished nickel, oxidized copper, are standard finishes. All goods shipped polished unless otherwise specified. For other finishes, see page 117. For separate caps, see pages 72-74

Hubbell Flush Attachment Plug

without Cover

Patented November 8, 1904; June 27, 1905

National Electrical Code Standard

This Flush Plug does away with the lid when not in use, and still presents a flush surface having at the same time no electrical contacts exposed.

When connected, the cap only projects one-half inch above the surface of the plug, doing away with the unsightly lid and far projecting plug as found in other styles.

The cap to our regular plug, now so universally adopted, can be used on this flush plug, permitting an interchangeable connection from a baseboard outlet, which arrangement cannot be had when any other flush receptacle is used.

See opposite page for prices



No. 5418

Hubbell Flush Attachment Plug

with Cover

Code Word	List No.		Sched- ule	Std. Pkg.	Plug Weight	Price
Patiens	5498	Flush Attachment Plug, without Cap, with $4\frac{1}{2}$ x $2\frac{1}{4}$ plate	H	50	53 lbs.	\$1.75
Patior	5499	Flush Attachment Plug, with Porcelain Cap, with $4\frac{1}{2}$ x $2\frac{1}{4}$ plate	H	50	57 "	1.90
Patria	5500	Flush Attachment Plug, with Composi- tion Cap, with $4\frac{1}{2}$ x $2\frac{1}{4}$ plate	H	50	56 "	1.95
Paucus	5501	Flush Attachment Plug, with Brass Cov- ered Porcelain Cap, with $4\frac{1}{2}$ x $2\frac{1}{4}$ plate	H	50	58 "	2.00
Paulo	5502	Flush Attachment Plug, without Cap, with $2\frac{1}{2}$ x $4\frac{1}{4}$ plate	H	50	53 "	1.75
Pauper	5503	Flush Attachment Plug, with Porcelain Cap, with $2\frac{1}{2}$ x $4\frac{1}{4}$ plate	H	50	57 "	1.90
Pax	5504	Flush Attachment Plug, with Composi- tion Cap, with $2\frac{1}{2}$ x $4\frac{1}{4}$ plate	H	50	56 "	1.95
Premo	5505	Flush Attachment Plug, with Brass Cov- ered Porcelain Cap, with $2\frac{1}{2}$ x $4\frac{1}{4}$ plate	H	50	58 "	2.00

Polished brass, old brass, polished nickel, oxidized copper, are standard finishes. All goods shipped polished brass, unless otherwise specified. For other finishes, see page 117. For separate caps, see pages 72-74.

Hubbell Flush Attachment Plug

with Cover

Patented November 8, 1904; June 27, 1905

National Electrical Code Standard

The mechanical features of this plug are identical with those illustrated on page 47, except the plate is fitted with a double hinge and shows no holes or openings.

When in use, it swings back on the plate, and, the cap setting in a recess, is practically flush with the surface.

See opposite page for prices



No. 5501

Hubbell Floor Receptacle

50

Code Word	List No.		Sched-ule	Std. Pkg.	Pkg. Weight	Price
Pedes	5506	Floor Receptacle, Porcelain Cap . . .	H	25	12 lbs.	\$1.15
Pejor	5507	" " Composition Cap . .	H	25	11 "	1.20
Pendeo	5508	" " Brass Covered Cap .	H	25	13 "	1.25

For special finished brass covered caps, see page 117
 " " " plates, " " 117
 " separate caps " " 72-74

Hubbell Floor Receptacle

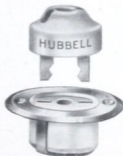
Patented November 8, 1904; June 27, 1905

National Electrical Code Standard

The same principle that is used in our regular plug is embodied in this device.

Plate measures $2\frac{1}{2}$ inch in diameter and can be used in side wall work as well as a floor receptacle.

See opposite page for prices



No. 5506

Hubbell Multiple Attachment Plug

with Lamp Base Attachment—for Three Plugs

52

Code Word	List No.		Schedule	Std. Pkg.	Pkg. Weight	Price
Placare	5327	Ed. Multiple Attachment Plug—Lamp Base—three Plugs	H	10	10 lbs.	\$1.50
Placide	5328	T. H. Multiple Attachment Plug—Lamp Base—three Plugs	H	10	10 "	1.50

For separate caps, see pages 72-74

Hubbell Multiple Attachment Plug

with Lamp Base Attachment
for three Plugs

Patented August 16, 1892; November 29, 1904

All Porcelain Fuseless

This device is for use in a receptacle to tap the current for three different purposes, and not intended for use in a Key Socket. Caps are interchangeable with all Plugs.

See opposite page for prices



No. 5327 — 1/4 Size

Hubbell Multiple Attachment Plug

with Lamp Base Attachment—for Two Plugs and One Lamp

Code Word	List No.	Schedule	Std. Pkg.	Pkg. Weight	Price	
54 Pleo	533 ¹	Ed. Multiple Plug—Lamp Base—two Plugs, one Lamp	H	10	11 lbs.	\$1.50
	533 ²	T. H. Multiple Plug—Lamp Base—two Plugs—one Lamp	H	10	11 "	1.50

For separate caps . . . see pages 72-74
 " " receptacle . " " 70

Hubbell Multiple Attachment Plug

with Lamp Base Attachment

for two Plugs and one Lamp

Patented August 16, 1892; November 29, 1904

All Porcelain Fuseless

This device serves the same purpose as the one described on preceding page, except it is fitted with a receptacle for holding a lamp.

Caps are interchangeable with all Plugs.

See opposite page for prices



No. 5331

Hubbell Multiple Attachment Plug

for Chapman Receptacle—Fitted for Three Plugs

56

Code Word	List No.		Sched-ule	Std. Pkg.	Pkg. Weight	Price
Prunum	5335	Multiple Plug for Chapman Receptacle —three Plugs	H	10	10 lbs.	\$1.50

For separate caps, see pages 72-74

Hubbell Multiple Attachment Plug for Chapman Receptacle

fitted for three Plugs

Patented August 16, 1892; November 29, 1904

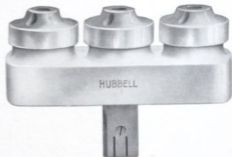
All Porcelain Fuseless

This Plug is the same as the other Multiple Plugs illustrated on preceding pages, except it is designed to fit a Chapman Receptacle.

The device avoids fastening the cords together as is necessary with the ordinary Chapman Plug, when used for more than one purpose.

Caps are interchangeable with all Plugs.

See opposite page for prices



No. 5335 — 1/4 Size

Hubbell Current Tap

Code Word	List No.		Sched-ule	Std. Pkg.	Pkg. Weight	Price
Perago	5454	Edison Current Tap Multiple	H	50	20 lbs.	\$.50
Perduco	5509	T. H. " " "	H	50	22 "	.50
Pereo	5510	Edison " " Series	H	50	20 "	.50
Perfero	5511	T. H. " " "	H	50	22 "	.50

58

Hubbell Current Tap

Patented August 16, 1892; November 8, 1904

National Electrical Code Standard

This Current Tap is all porcelain; simple, compact, and reasonable in price.

The electrical contacts are enclosed, and there are no exposed binding screws.

It is made both in series and multiple.

See opposite page for prices



No. 5454

Hubbell Side Wall Attachment Plug

Code Word	List No.		Schedule	Std. Pkg.	Pkg. Weight	Price
Pellio	5426	Side Wall Plug, Porcelain Cap Concealed	H	50	20 lbs.	\$.40
Placas	5427	" " " Composition " "	H	50	19 "	.45
Pensus	5428	" " " Brass Covered Cap "	H	50	21 "	.50
Punio	5512	" " " Porcelain Cap Cleat . . .	H	50	21 "	.40
Puto	5513	" " " Composition Cap Cleat . .	H	50	20 "	.45
Pugio	5514	" " " Brass Covered " " . . .	H	50	22 "	.50

For special finished brass covered caps, see page 117

For separate caps, " " 72-74

Hubbell Side Wall Attachment Plug

All Porcelain Fuseless

Patented August 16, 1892; November 8, 1904

National Electrical Code Standard

This Plug is to be used, chiefly, for side wall work, and is designed for both cleat and concealed wiring.

It dispenses with both Socket and Receptacle, and is especially desirable in an orchestra pit, and for other stage effects, also wherever it is convenient to use an extension cord.

Caps are interchangeable with all plugs.

See opposite page for prices



No. 5426

Hubbell Angle Attachment Plug

62

Code Word	List No.		Sched-ule	Std. Pkg.	Pkg. Weight	Price
Peritus	5515	Angle Plug without Base	H	20	6 lbs.	\$.50
Peto	5516	" " with Concealed Base . .	H	20	10 "	.80
Piget	5517	" " " Cleat " . .	H	20	11 "	.80

Hubbell Angle Attachment Plug

Patented August 16, 1892; November 8, 1904

National Electrical Code Standard

The Angle Attachment Plug is designed for use in both show case and window lighting. The quickness with which it can be connected or disconnected, and its shallow porcelain base, permit a most convenient way to change the number of lights without causing an unsightly appearance.

Made for both cleat and concealed wiring.

See opposite page for prices



No. 5517

Hubbell Floor Plug

64

Code Word	List No.		Sched-ule	Std. Pkg.	Pkg. Weight	Price
Pirato	5469	Floor Plug Porcelain Cap	H	50	19 lbs.	\$.60
Plebs	5470	" " Composition Cap	H	50	18 "	.65
Provoco	5471	" " Brass Covered Cap	H	50	20 "	.70

For special finished brass covered caps, see page 117
 " separate caps " " 72-74

Hubbell Floor Plug

Patented August 16, 1892; November 8, 1904

National Electrical Code Standard

This Floor Plug is designed for use with waterproof flush floor boxes.

It is made similar to our No. 5426 Side Wall Plug, and is the smallest and most compact plug for this purpose.

The cap to our regular plug can be used with same permitting of an interchangeable connection.

See opposite page for prices



No. 5469

Hubbell Theatre Plug

66

Code Word	List No.		Schedule	Std. Pkg.	Pkg. Weight	Price
Poena	5518	Theatre Plug	H	30	7 lbs.	\$.60
Pompa	5519	" " Brass Covered Cap .	H	30	8 "	.70

For special finish brass covered caps, see page 117
 For separate caps " " 72-74

Hubbell Theatre Plug

Patented August 16, 1902; November 8, 1904

This Theatre Plug is designed principally for stage lighting where it is desired to carry an extension cord for various scenic effects.

It is the most practicable Plug for this purpose as it provides a means of conveniently carrying the current to the desired point, and quickly connecting and disconnecting same. The separable and interchangeable cap are features that cannot be had with other styles.

This Plug is made in composition only, making it practically indestructible.

See opposite page for prices



No. 5518

Hubbell Weatherproof Plug

68

Code Word	List No.		Sched-ule	Std. Pkg.	Pkg. Weight	Price
Pono	5520	Weatherproof Plug, Porcelain Cap . . .	H	30	15 lbs.	\$1.00
Propior	5521	" " Composition Cap .	H	30	14 "	1.05
Propter	5522	" " Brass Covered Cap	H	30	16 "	1.10

For special finished brass covered caps, see page 117

For separate caps " " 72-74

Hubbell Weatherproof Plug

Patented August 16, 1902; November 8, 1904

National Electrical Code Standard

This Weatherproof Plug is designed for out door work, especially for electric signs.

The interchangeable cap feature, and the quickness with which it can be disconnected and changed are strong points in its favor.

See opposite page for prices



No. 5520

Hubbell Receptacle for Attachment Plug

70

Code Word	List No.		Schedule	Std. Pkg.	Pkg. Weight	Price
Plangor	5424	Edison Receptacle for Attachment Plug	H	30	4 lbs.	\$.17
Pinetum	5425	T. H. " " " "	H	30	3 "	.17

Hubbell Receptacle for Attachment Plug

This device was originally designed for our Multiple Plug, which is made for two Plugs and one lamp, but it can be used in connection with all our knife-blade contact Plugs.



No. 5424

See opposite page for prices

Hubbell Separate Caps for Plugs

Fuseless

Code Word	List No.		Schedule	Std. Pkg.	Pkg. Weight	Price
Punctus	5419	Porcelain Cap,	H	30	3 lbs.	\$.15
Pariter	5420	Composition Cap	H	30	3 "	.20
Protelo	5421	Brass Covered Cap, Porcelain . . .	H	30	3 "	.25
Possum	5523	" " " Composition .	H	30	3 "	.30

For special finished brass covered cap, see page 117

Hubbell Separate Caps for Plugs

Fuseless



No. 5419



No. 5420

Plug Caps (as illustrated) are interchangeable
with our entire line of plugs.

See opposite page for prices



No. 5421

Hubbell Separate Caps for Plugs

Fusible

Code Word	List No.		Schedule	Std. Pkg.	Pkg. Weight	Price
Post	5524	Porcelain Cap	H	30	3 lbs.	\$.20
Postulo	5525	Composition Cap	H	30	3 "	.25
Potens	5526	Brass Covered Cap, Porcelain . .	H	30	3 "	.30
Potior	5527	" " " Composition .	H	30	3 "	.35
		All plugs fitted with fusible cap, add to list				.05

For special finished brass covered cap, see page 117

Hubbell Separate Caps for Plugs

Fusible

This Fusible Cap is the same as our regular cap, excepting it is made in the fusible type, and designed to convert our regular fuseless plug into fusible.

Furnished in both porcelain and brass covered.

See opposite page for prices



No. 5524

Hubbell Shade Holder

Code Word	List No.		Schedule	Std. Pkg.	Pkg. Weight	Price Gro.
76 Spiritus Status	5339 5340	2 1/4 inch Shade Holder, per gross . 3 1/4 " " " " " .	D D	5 gro. 1 "	38 lbs. 12 "	\$9.00 18.00

For special finishes, see page 117

Hubbell Shade Holder

Patented July 28, 1903; February 23, 1904

This Holder is made in two parts, consisting of a split screw collar and holder.

It can be attached to any standard Socket without the use of tools, and is as firmly held in place as if it were a part of the shell itself, holding the shade or globe in a direct and true center, and its rigidity prevents (by ill use or otherwise) the shade from being sprung from a correct position.

There are no projecting screws or lugs to present an unsightly appearance.

See opposite page for prices



No. 5339

Hubbell Locking Spring Shade Holder

78

Code Word	List No.		Sched- ule	Std. Pkg.	Pkg. Weight	Price Gro.
Surgo	5528	2 1/4 inch Locking Spring Shade Holder	D	5 gro.	40 lbs.	\$12.50

For special finishes, see page 117

Hubbell Locking Spring Shade Holder

Patented July 28, 1903; February 24, 1904; June 27, 1905

The method of fastening this holder to the socket shell is the same as that employed in our No. 5339, but the holding of the shade by a locking spring, doing away with the globe holder screws is an entirely new principle.

It permits of a more rapid adjustment than is obtained in the ordinary holder, at the same time holding the shade firmly and in a correct position.

It is specially adapted for railway or marine use, as the shade cannot jar loose, and is more ornamental for all purposes.

See opposite page for prices



No. 5528

Hubbell Half Reflector

80

Code Word	List No.		Schedule	Std. Pkg.	Pkg. Weight	Price Doz.
Sagino	5429	Half Tin Reflector	C	5 doz.	8 lbs.	\$3.25
Scabre	5430	" Aluminum Reflector	C	5 "	8 "	5.50
Sustuli	5532	" Brass "	C	5 "	8 "	9.00

For special finished brass reflectors, see page 117

Hubbell Half Reflector

Patented July 28, 1903

This Reflector is attached to the socket by means of a screw collar the same as used on our shade holder.

This insures a strength and rigidity to the reflector that cannot be had with other attachments.

The reflector cannot get out of line, requires no tools to attach, yet can be removed in an instant

See opposite page for prices



No. 5429

81

Hubbell Flat Tin and Aluminum Shades

Code Word	List No.		Sched- ule	Std. Pkg.	Pkg. Weight		Price
Sectura	5431	8 inch Flat Tin Shade	C	5 doz.	16 lbs.	Doz.	\$2.50
Sibilio	5432	10 " " " "	C	5 "	21 "	"	3.00
Signas	5433	12 " " " "	C	5 "	41 "	"	4.40
Sulvia	5456	14 " " " "	C	5 "	48 "	"	5.60
Salvus	5457	16 " " " "	C	5 "	64 "	"	6.90
Superbe	5476	18 " " " "	C	5 "	76 "	"	8.50
Simulo	5434	8 " Flat Aluminum Shade	C	1 "	3 "	Each	.85
Solator	5435	10 " " " "	C	1 "	4 "	"	.95
Specula	5436	12 " " " "	C	1 "	8 "	"	1.20
Superus	5458	14 " " " "	C	1 "	10 "	"	1.50
Supremus	5459	16 " " " "	C	1 "	13 "	"	1.90

Hubbell Flat Tin and Aluminum Shades

Patented July 28, 1903

A combined Shade and Shade Holder is the principle of our shades.

They cannot be put on in any other than a true position, therefore, hold the lamp in an exact center, where it is securely held no matter how much abuse it receives. This secures an equal and full distribution of light, which is a strong feature from an economical viewpoint.

No screws or shade holders are required in attaching to the socket, therefore, a considerable saving in the cost of installation is obtained.

Made in both tin and aluminum.

See opposite page for prices



No. 5432

Hubbell Deep Cone Tin and Aluminum Shades

Code Word	List No.		Sched-ule	Std. Pkg.	Pkg. Weight		Price
Stultus	5440	8 inch Cone Tin Shade	C	5 doz.	19 lbs.	Doz.	\$3.50
Stupare	5441	10 " " " "	C	5 "	28 "	"	3.80
Sternere	5442	12 " " " "	C	5 "	40 "	"	5.60
Scelus	5473	8 " Cone Aluminum Shade .	C	1 "	4 "	Each	.85
Seco	5474	10 " " " " .	C	1 "	6 "	"	1.25
Scipio	5475	12 " " " " .	C	1 "	8 "	"	1.70

Hubbell Deep Cone Tin and Aluminum Shade

Patented July 28, 1903

The attachment in this Cone Shade is the same as that used in our other styles.

We strongly recommend same for use in mills or factories, as the shade is held so rigidly, that the lamp is fully protected, thereby the use of a guard can be dispensed with.

Made in both tin and aluminum.

See opposite page for prices



No. 5441

Hubbell Parabola Reflector

Code Word	List No.		Sched- ule	Std. Pkg.	Pkg. Weight	Price Doz.
Scripsi	5460	6½ inch Parabola Polished, for 16 or 32 C. P. Lamps	C	5 doz.	15 lbs.	\$9.00
Serio	5461	6½ inch Parabola Frosted, for 16 or 32 C. P. Lamps	C	5 "	15 "	8.25
Sector	5477	5½ inch Parabola Polished, for 16 C. P. Lamps only	C	5 "	12 "	8.75
Sepens	5478	5½ inch Parabola Frosted, for 16 C. P. Lamps only	C	5 "	12 "	8.00

Hubbell Parabola Reflector

Patented July 28, 1903

The majority of Parabola Reflectors are attached to the socket shell by means of a spring holder, which is insecure when compared with our attachment.

Our screw collar holds the reflector rigid, and in a correct and permanent position.

Made in aluminum only, both frosted and polished.



No. 5460

See opposite page for prices

Hubbell Shallow Cone Tin Shade

Code Word	List No.		Sched-ule	Std. Pkg.	Pkg. Weight	Price Doz.
Sella	5462	8 inch Shallow Cone Tin Shade . .	C	5 doz.	16 lbs.	\$2.90
Semel	5463	10 " " " " " . .	C	5 "	21 "	3.35
Semper	5464	12 " " " " " . .	C	5 "	41 "	4.70
Senatus	5465	14 " " " " " . .	C	5 "	48 "	6.00
Senex	5466	16 " " " " " . .	C	5 "	64 "	7.30

Hubbell Shallow Cone Tin Shade

Patented July 28, 1903

The Shallow Cone Shade is a modification of our flat tin, it being a trifle more concave.

This style is used when it is desired to secure a wider range of light than can be obtained in our cone shade.

Made in tin only.

See opposite page for prices



No. 5463

Hubbell Enameled Steel Shade

Code Word	List No.		Sched- ule	Std. Pkg.	Pkg. Weight	Price Doz.
Senior	5533	10 inch Flat Enameled Steel Shade	C	1 doz.	8 lbs.	\$4.00

Hubbell Enameled Steel Shade

Patented July 28, 1903

This Enameled Shade is practically a steel shade covered with a heavy coating of white enamel, making a light and indestructible shade that has every advantage of the porcelain, without the breakage.

Made in 10 inch flat only.

See opposite page for prices



No. 5533

Hubbell Special Aluminum Shade

Code Word	List No.		Schedule	Std. Pkg.	Pkg. Weight	Price Doz.
Seretio	5479	7½ inch Special Aluminum Shade, Polished	C	5 doz.	18 lbs.	\$10 00
Sermo	5480	7½ inch Special Aluminum Shade, Frosted	C	5 "	18 "	9.25

Hubbell Special Aluminum Shade

Patented July 28, 1903

This special Aluminum Shade is of oval design, and in view of its ornamental appearance is more desirable than the regular Cone.

Made in 7 1/2 inch only.

See opposite page for prices



No. 5479

Hubbell Lamp Guard

Code Word	List No.		Sched-ule	Std. Pkg.	Pkg. Weight	Price Doz.
Latus	5485	16 C. P. Lamp Guard	E	1 gro.	30 lbs.	\$3.50
Lando	5487	32 " " "	E	1 "	36 "	3-75

Hubbell Lamp Guard

Patented July 28, 1903

This Lamp Guard is simple, rigid, durable, and quickly attached.

Fits any standard socket shell, cannot become loose, and does not depend on lamp bulb for support.

See opposite page for prices



No. 5485

Hubbell Lamp Guard

for Use with Hubbell Shades

96

Code Word	List No.		Schedule	Std. Pkg.	Pkg. Weight	Price Doz.
Legion	5534	16 C. P. Lamp Guard	E	1 gro	30 lbs.	\$3.50
Lego	5536	32 " " "	E	1 "	36 "	3.75

Hubbell Lamp Guard

for Use with Hubbell Shades

Patented July 28, 1903

This Guard is designed to be used in connection with our shades, as per illustration.

It is practically the same as that shown on previous page, excepting the threaded neck is made sufficiently large to engage the threaded neck of the shade.

Price covers cost of guard only



No. 5334

Hubbell Standard Pull Clusters

Code Word	List No.						Sched- ule	Std. Pkg.	Pkg. Weight	Price
Cado	5135	2	Light Standard Pull Cluster, Ed. Base				F	10	15 lbs.	\$3.25
Caecio	5136	3	"	"	"	"	F	10	18 "	4.10
Calcar	5137	4	"	"	"	"	F	10	20 "	5.00
Calceo	5138	5	"	"	"	"	F	10	23 "	5.95
Calco	5139	6	"	"	"	"	F	10	25 "	6.85
Caldor	5140	2	"	"	"	"	T H.	10	15 "	3.25
Caleo	5141	3	"	"	"	"	"	10	18 "	4.10
Caligo	5142	4	"	"	"	"	"	10	20 "	5.00
Calix	5143	5	"	"	"	"	"	10	23 "	5.95
Callens	5144	6	"	"	"	"	"	10	25 "	6.85
Calo	5145	2	"	"	"	"	West.	10	15 "	3.25
Calor	5146	3	"	"	"	"	"	10	18 "	4.10
Calva	5147	4	"	"	"	"	"	10	20 "	5.00
Calvor	5148	5	"	"	"	"	"	10	23 "	5.95
Callis	5149	6	"	"	"	"	"	10	25 "	6.85

If furnished with chain over 3 feet in length, add to list, per foot10

If furnished with sockets, wired, add to list, per light.20

If desired with stem, canopy and crowfoot, see pages 108, 110, 112. For special finishes, see page 118

Hubbell Standard Pull Clusters

Patented May 27, 1902; July 28, 1903

The principal feature of our Cluster is the separate control of each light by a pendant chain connecting our Pull Sockets to a common center. By a straight pull all of the lights may be turned on or off. By pulling the chain to one side anyone or more of the lights may be operated.

Another distinctive feature is the fastening of the Socket cap to the cluster center by riveting, thereby lessening the danger of the socket becoming loose or unfastened. Not the least of the advantages of this Cluster is the small expense of equipping a building with a convenient means of controlling the lights without the use of extra wiring and wall switches.

Complete with shade holder, chain and acorn, not wired. Standard length of chain measured from bottom of cluster, 3 feet. Cluster furnished for $\frac{3}{8}$ inch stem unless otherwise specified.

For prices see opposite page



No. 5130

Hubbell Separable Pull Clusters

Code Word	List No.						Sched-ule	Std. Pkg.	Pkg. Weight	Price
Campus	5346	2	Light Separable Pull Cluster, Ed. Base				F	3	9 lbs.	\$4.25
Caneo	5347	3	"	"	"	"	F	5	10 "	5.15
Canis	5348	4	"	"	"	"	F	5	12 "	6.10
Cano	5349	5	"	"	"	"	F	5	13 "	7.05
Cantor	5350	6	"	"	"	"	F	5	14 "	8.00
Capero	5351	2	"	"	"	T.H.	F	5	9 "	4.25
Capio	5352	3	"	"	"	"	F	5	10 "	5.15
Cardo	5353	4	"	"	"	"	F	5	12 "	6.10
Caso	5354	5	"	"	"	"	F	5	13 "	7.05
Castro	5355	6	"	"	"	"	F	5	14 "	8.00
Casula	5356	2	"	"	"	West.	F	5	9 "	4.25
Causor	5357	3	"	"	"	"	F	5	10 "	5.15
Calero	5358	4	"	"	"	"	F	5	12 "	6.10
Cansor	5359	5	"	"	"	"	F	5	13 "	7.05
Carno	5360	6	"	"	"	"	F	5	14 "	8.00

If furnished with special heavy chain over 3 feet in length, add to list, per foot31

If furnished with sockets wired, add to list, per light20

If desired with stem, canopy and crowfoot, see pages 108, 110, 112. For special finishes, see page 118

Hubbell Separable Pull Clusters

Patented May 27, 1902 ; July 28, 1903

This Cluster is of a similar design to our regular Pull Cluster, except it has a separable bottom for wiring the fixture from the underside, and it is made of heavy gauge (No. 22) metal for high grade work.

Complete with Shade Holder, special heavy Chain and Acorn, not wired. Standard length of chain measured from bottom of Cluster, 3 ft. Cluster furnished for $\frac{3}{4}$ inch stem unless otherwise specified.

See opposite page for prices



No. 5347

Hubbell Fixture Pull Clusters

Code Word	List No.		Sched- ule	Std. Pkg.	Pkg. Weight	Price
Canor	5384	2 Light Fixture, Pull Cluster, Ed. Base	F	5	8 lbs.	\$3.55
Carus	5385	3 " " " " " "	F	5	9 "	4.50
Carpo	5386	4 " " " " " "	F	5	10 "	5.50
Cito	5387	5 " " " " " "	F	5	11 "	6.50
Civis	5388	6 " " " " " "	F	5	12 "	7.50
Cogito	5389	2 " " " " T.H. "	F	5	8 "	3.55
Cogo	5390	3 " " " " " "	F	5	9 "	4.50
Colo	5391	4 " " " " " "	F	5	10 "	5.50
Costo	5392	5 " " " " " "	F	5	11 "	6.50
Crema	5393	6 " " " " " "	F	5	12 "	7.50
Crepe	5394	2 " " " " West. "	F	5	8 "	3.55
Crispo	5395	3 " " " " " "	F	5	9 "	4.50
Consto	5396	4 " " " " " "	F	5	10 "	5.50
Connecto	5397	5 " " " " " "	F	5	11 "	6.50
Conflo	5398	6 " " " " " "	F	5	12 "	7.50

If furnished with chain over 3 feet in length, add to list, per foot10

If furnished with sockets wired, add to list, per light20

If desired with stem, canopy and crowfoot, see pages 108, 110, 112. For special finishes, see page 118

02

Hubbell Fixture Pull Clusters

Patented May 27, 1902; July 28, 1903

This Cluster, although of the same general make-up as our regular Cluster, is designed for more ornamental work.

It is equipped with 2¼ Hubbell Shade Holders without shades. Not wired.

Standard Length of Chain from bottom of Cluster, three feet, not wired.

See opposite page for prices



No. 5385

Hubbell Side Wall Pull Clusters

Code Word	List No.		Sched- ule	Std. Pkg.	Pkg. Weight	Price
Canet	5400	Side Wall Pull Cluster Straight Electric Ed. Sockets	F	5	10 lbs.	\$5.50
Citras	5401	Side Wall Pull Cluster Straight Electric T. H. Sockets	F	5	10 "	5.50
Coloris	5402	Side Wall Pull Cluster Straight Electric West. Sockets	F	5	10 "	5.50
		If furnished with chain over 1 foot in length, add to list, per foot10
		If furnished wired, add to list				1.00

For special finishes see page 118

Hubbell Side Wall Pull Clusters

Patented May 27, 1902; July 28, 1903

This fixture, while both ornamental and substantial, is conveniently reached for turning on and off the lights by the chain, and, like our Pull Cluster, dispenses with extra wiring and wall switches. It is well adapted to halls and public rooms, where it is desirable to place the fixture at a greater height than would be convenient with the key socket. It is fitted with $\frac{2}{4}$ inch Hubbell Shade Holders, without shades. Not wired

Standard length of chain measuring from button to acorn, one foot.

See opposite page for prices



No. 5361

Hubbell Key and Keyless Clusters

This Cluster is made on the same general plan as our Pull Cluster, except the regular Key or Keyless Socket is used instead of our Pull Socket and Chain. When used with our regular Pull Clusters it furnishes a uniform design throughout the building, at the same time being much more substantial than any other key cluster, as the caps of the socket are a part of the cluster center, and are not attached to the center by a threaded nipple.

Cluster complete with sockets attached and Shade Holder. Not wired.

Furnished for $\frac{3}{8}$ inch stem unless otherwise specified.

See opposite page for prices



No. 5196—Keyless

Hubbell Cluster and Socket Fittings

Code Word	List No.		Sched- ule	Std. Pkg.	Pkg. Weight	Price
Ferre	5364	4 1/2 inch Canopy with 3/8 Slip Ring .	L	5	5 lbs.	\$.30
Fussa	5365	4 1/2 " " " 3/4 " " .	L	5	5 "	.30
Fussilis	5366	5 1/2 " " " 3/4 " " .	L	5	8 "	.70
Francus	5367	5 1/2 x 1 1/8 inch Extension Ring . . .	L	5	3 "	.27

For special finishes, see page 118

Hubbell Cluster and Socket Fittings

Canopy—4½ inches wide, 4 inches deep

List No. 5364—Canopy with ⅝ inch Slip Ring.

List No. 5365—Canopy with ¾ inch Slip Ring.



No. 5364



No. 5366

Canopy—5½ inches wide, 5½ inches deep, 22 gauge

(Furnished with Separable Cluster, see page 39)

List No. 5366—Canopy with ¾ inch Slip Ring.

Extension Ring—5½ inches wide, 1⅝ inch deep, 22 gauge

List No. 5367—Extension Ring.



No. 5367

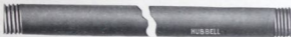
See opposite page for prices

Hubbell Cluster and Socket Fittings

Code Word	List No.		Sched- ule	Std. Pkg.	Pkg. Weight	Price
Fussum	5372	3/8 inch 17 gauge Brass Stem	L	5	8 lbs. per ft.,	\$.30
Firma	5373	3/8 " Iron Pipe with 3/4 inch Covering Tube, 24 gauge	L	5	20 " "	.35
Fraudis	5374	3/8 inch x 3/8 inch Malleable Iron Insulating Joints	L	5	7 " "	.45
Facere	5375	3/8 inch x 3/8 inch Brass Insulating Joints	L	5	7 " "	.50
Fulvus	5376	3/8 inch x 3/8 inch Malleable Iron Insulating Joints, with Hickey .	L	5	11 " "	.50
Funis	5377	3/8 inch x 3/8 inch Brass Insulating Joints, with Hickey	L	5	11 " "	.60

For special finish stems, see page 118

Hubbell Cluster and Socket Fittings



No. 5372



No. 5373



No. 5376

Stems are highly polished and lacquered. No. 5372, No. 17 gauge; No. 5373 covering tube, No. 24 gauge.

Insulating joints with and without hickey are of standard make, and will fit all our fixtures.

See opposite page for prices

Hubbell Cluster and Socket Fittings

Code Word	List No.		Sched- ule	Std. Pkg.	Pkg. Weight	Price
Secta	5368	3 $\frac{1}{4}$ in. Shade Holder, for $\frac{3}{8}$ in. Stem .	L	5	3 lbs.	\$.16
Secans	5369	3 $\frac{1}{4}$ " " " " $\frac{3}{8}$ " " .	L	5	3 "	.16
Futilis	5378	$\frac{3}{8}$ x $\frac{3}{8}$ in. Iron Hickey	L	5	4 "	.10
Flere	5379	$\frac{3}{8}$ x $\frac{3}{8}$ in. Crowfoot	L	5	4 "	3.50 per 100

For special finish shade holders, see page 118

Hubbell Cluster and Socket Fittings

This shade holder is of heavy gauge metal and fits the regular $3\frac{1}{4}$ inch flat porcelain shade. Is made for $\frac{5}{8}$ inch stem and $\frac{3}{4}$ inch covering tube.



No. 5368



No. 5378



No. 5379

Hickey is made of malleable iron, and is of special design for our Cluster Centers. Crowfoot is of standard design and heavy casting.

See opposite page for prices

Hubbell Cluster and Socket Fittings

Code Word	List No.		Schedule	Std. Pkg.	Pkg. Weight	Price
Flos	5380	1/8 inch Socket Bushings	L	1000	3 lbs.	\$7.50
Floris	5381	1/8 " Fixture "	L	1000	10 "	10.00
Fluit	5382	Chain, per foot	F			.10
Falda	5383	Acorn, each, attached	F			.06
Futilit	5399	Heavy Chain, per foot	F			.31
Futilito	5535	Candelabra, " "	F			.10

For special finishes, see pages 116-118

Hubbell Cluster and Socket Fittings

Socket Bushings are of regular standard make of Composition.

Chains are made expressly for us, and are carefully tested, polished and lacquered.



No. 5380



No. 5382

See opposite page for prices

Price List Special Finishes

Article	Finish	Sched- ule	Price Add to List	
Hubbell Pull Sockets including Chain and Acorn	Old Brass	}	A B	\$.06
	Rich Gilt			
Hubbell Pull Sockets including Chain and Acorn	Old English Bronze	}	A B	.10
	Oxidized Brass			
	Etruscan Gilt			
	Mottled Copper			
	Polished Bronze			
	Polished Steel			
	Bauer Barff			
	Lemon Brass			
Burnished Gilt				
Hubbell Pull Sockets including Chain and Acorn	Oxidized Silver	}	A B	.15
	Butler's Silver			
	Pompeian Bronze			
	Polished Silver			
Satin Gold	Roman Gold			
	Gun Metal			
	Sand Blast Antique Brass			
	" " Old Brass			
Chain for Sockets	All Finishes, per foot02

See page 9 for Telegraphic Code

Price List Special Finishes

Page	List No.	Article	Schedule	Price
22	5024-6	Socket with Lamp Base Attachment	F	Basic or Socket List
24	5455	Candelabra Socket	M	
26	5482	Collar for Candelabra extension	M	.02
28	5027	Pull Switch	F	Basic or Socket List
30	5403	Dazzlite	F	.20
38	5491-94	Caps for Attachment Plug for Re-enforced Cord	H	.05
42	5325-50	Chandelier Plug, Casing	H	.10
46	5415-18	Flush Plug Plates	H	.15
48	5498-05	" " " with Cover	H	.25
50	5506	Plates for Floor Receptacle	H	.15
72	5421-23	Covered Caps for Plugs, Fuseless	H	.05
74	5524-27	" " " " Fusible	H	.05
76	5339	2¼ Shade Holder	D	Gro. 2.50
76	5340	3¼ " "	D	" 2.50
78	5528	2¼ " " with Locking Spring	D	" 2.50
80	5532	Brass Half Reflector	C	Doz. 7.50

The above prices cover the following finishes:

Old Brass	Oxidized Copper	Wrought Iron	English Bronze	Antique Copper	Bauer Barff
Rich Gilt	Nickel Plate	Old English Bronze	Mottled Copper	Polished Copper	Acid Bronze
All other finishes on application				See page 9 for Telegraphic Co's	

Price List Special Finishes—Continued

Page	List No.	Article	Schedule	Price
98	5135-49	Pull Clusters Standard	F	\$.70
100	5346-60	" " Separable		.80
102	5384-98	" " Fixture		.90
104	" "	" " Side Wall		1.00
				1.10
106	5195-209	Key and Keyless Clusters	L	1.25
				.45
				.55
				.60
				.70
108	5364	4 1/2 Canopy	L	.80
108	5365	5 1/2 " "	L	.20
108	5367	Extension Ring	L	.25
110	5372	5/8 in. Stem	L	.10
110	5373	3/4 Covering Tube	L	.10
112	5368-9	Cluster Shade Holder	L	.10
114	5383	Acorn	F	.02

The above prices cover the following finishes:

Old Brass	Oxidized Copper	Wrought Iron	English Bronze	Antique Copper	Bauer Barff
Rich Gilt	Nickel Plate	Old English Bronze	Mottled Copper	Polished Copper	Acid Bronze

All other finishes on application

See page 9 for Telegraphic Code

General Index

	Page		Page
Adapters	33	Attachment Plugs, Theatre	67
Attachment Plugs, Angle	63	" " Weatherproof	69
" " Caps (Fuseless)	73	Bushings	115
" " " (Fusible)	75	Candelabra Extensions	27
" " Chandelier	41-45	Canopies	109
" " Composition	37	Chain	115
" " Floor	65	Crowfeet	113
" " Flush	47-49	Clusters, Fixture	103
" " Multiple	53-57	" Key and Keyless	107
" " Receptacle	71	" Separable	101
" " Regular	35	" Side Wall	105
" " Reinforced		" Standard Pull	99
Cord (for)	39	Current Tap	59
" " Side Wall	61	Extension Ring	109

General Index—Continued

	Page		Page
Guards	95-97	Shade Holders for sockets	77-79
Hickeys	113	Index to Code Words	6-7-121-123
Insulating Joints	111	" " List Numbers	124-125
Light Attachment for Oil Lamp		Special Finishes	9
"Dazzlite"	31	Sockets (Pull) Angle	21
Receptacles, Floor	51	" " Candelabra	25
Shades, Cone	85	" " Extension	11
" Enameled Steel (flat)	91	" " Lamp Base	23
" Flat	83	" " Regular	13
" One-half Reflector	81	" " Rosette	19
" Parabola	87	" " Wall	15-17
" Shallow Cone	89	Stems	111
" Special Cone Aluminum	93	Switch, Pull	29
Shade Holders for clusters	113		

Index to Code Words

Code Word	Page	Code Word	Page	Code Word	Page	Code Word	Page	Code Word	Page
A									
Addo	32	Cano	100	Clemens	106	Dilator	30	Flowerer	9
C									
Cado	98	Canor	102	Clepo	106	Ductus	30	Floweret	9
Caecio	98	Cansor	100	Clens	106	Duratum	30	Flowerful	9
Calcar	98	Cantor	100	Cliepo	106	E			
Calceo	98	Capero	100	Clipeus	106	Edo	26	Flowering	9
Calco	98	Capio	100	Clivius	106	Enim	26	Flowerless	9
Caldor	98	Cardo	100	Clunis	106	Etsi	26	Flowery	9
Caleo	98	Carno	100	Clupea	106	F			
Calero	100	Carus	102	Cogito	102	Facere	110	Flowing	9
Caligo	98	Carmo	100	Cogo	102	Falda	114	Flowingly	9
Calix	98	Carus	102	Colo	102	Ferre	108	Flowk	9
Callens	98	Carpus	102	Coloris	104	Firma	110	Flowkwort	9
Callis	98	Caso	100	Connecto	102	Flagito	9	Flown	9
Calo	98	Castro	100	Conflo	102	Flecto	9	Flownetry	9
Calor	98	Casula	100	Consto	102	Fleo	9	Flowte	9
Calva	98	Causor	100	Costo	102	Flere	112	Flox	9
Calvor	98	Cito	102	Creto	102	Fletus	9	Floygene	9
Campus	100	Citras	104	Crepo	102	Flo	9	Fluate	9
Caneo	100	Civis	102	Crispo	102	Florens	9	Fluavil	9
Canis	100	Clades	106	D					
Canet	104	Clamito	106	Decem	30	Floreo	9	Flucan	9
		Clangor	106	Decet	30	Floris	114	Fluce	9
		Clarus	106	Decus	30	Flos	114	Fluctus	9
		Clathri	106			Flowerage	9	Fluit	114
		Claudo	106					Flumen	9
		Clave	106					Fluo	9
								Fluvius	9

Index to Code Words—Continued

Code Word	Page	Code Word	Page	Code Word	Page	Code Word	Page	Code Word	Page
Flytail	18	Gratus	6	Obtego	22	Odium	6	Par	38
Flyte	18	Gravis	6	Obtempo	20	Olim	6	Parco	6
Flywheel	18	Grex	6	Obting	20	Omero	6	Paris	38
Francus	108			Obtrecto	20	Unus	7	Pansus	46
Fraudis	110	L		Obtritaros	14	Opes	6	Parens	6
Fulvus	110	Laadboom	18	Obtrivimus	18	Opus	6	Paratio	42
Funis	110	Laadbus	18	Obtrivisti	12	Oram	6	Parcus	38
Fussa	108	Laadgat	18	Obtrudamus	12	Orbis	6	Parentio	38
Fussilis	108	Latus	94	Obtrude	12	Ordo	7	Pariter	72
Fussum	110	Laudo	94	Obtruding	12	Oris	6	Partus	44
Futilis	112	Legion	96	Obtrudant	12	Otium	6	Parvus	44
Futilit	114	Lego	96	Obtrunco	12	Ovum	6	Pastor	44
Futilito	114			Obtrusion	14	P		Patiens	48
		O		Obtrusive	14	Paco	34	Patior	44
		Obeo	6	Obtuendum	18	Pacta	46	Patria	48
G		Obedio	10	Obtulisset	18	Pactus	36	Paulo	48
Gades	7	Obicio	10	Obtulisti	18	Pagus	36	Paucus	48
Gaiha	7	Oblatas	16	Obtundendo	18	Palam	6	Pauper	48
Gallia	7	Oblisti	16	Obtudent	18	Pallens	46	Pax	48
Gelu	7	Oblit	16	Obturbo	22	Palpo	34	Pector	34
Gener	7	Obliu	6	Obturpo	22	Palus	7	Pecus	7
Geno	7	Obses	10	Obtusio	28	Pando	36	Pedes	50
Gesto	6	Obsisto	10	Obvius	6	Pandor	34	Pejor	50
Gloria	6	Obsto	24	Ociur	7			Pellio	60

Index to Code Words—Continued

Code Word	Page	Code Word	Page	Code Word	Page	Code Word	Page	Code Word	Page
Pendeo	50	Pluto	40	Provo	46	Schola	6	Signas	82
Pensus	60	Pluvia	42	Provoco	64	Scindo	6	Silva	7
Perago	58	Poena	66	Prunum	56	Scipio	84	Simulo	82
Perduco	58	Pomum	7	Puella	36	Scriba	7	Solator	82
Pereo	58	Pompa	66	Pugio	60	Scripsi	86	Solus	7
Perfero	58	Pondo	46	Pulcrum	46	Secans	112	Specula	82
Peritus	62	Pono	68	Pulvis	34	Seco	84	Spero	7
Peto	62	Pontus	45	Punctus	72	Secta	112	Spiritus	76
Piget	62	Porta	7	Punio	60	Sector	86	Status	76
Pilum	6	Postulo	74	Puto	60	Sedes	7	Stanim	6
Pinetum	70	Posco	6			Sectura	82	Stella	7
Pirato	64	Positus	40	S		Sella	88	Sternere	84
Placare	52	Possum	72	Saepe	7	Semel	88	Stultus	84
Placas	60	Post	74	Sagino	80	Semper	88	Stupare	84
Placide	52	Potens	74	Salus	6	Senatus	88	Super	7
Planare	54	Potior	74	Salvus	7	Senex	88	Superbe	82
Plangor	70	Prendo	34	Salvus	82	Senior	90	Supra	82
Plebs	64	Premo	48	Sancio	6	Serio	86	Superus	82
Pleneo	46	Probe	7	Sano	6	Seritio	92	Supremus	82
Pleo	54	Propior	68	Satis	7	Serpens	86	Surgo	78
Plodo	42	Propter	68	Scabre	80	Sermo	92	Sustali	80
Plus	40	Protelo	72	Seclus	84	Sibilio	82		

Index to List Numbers

Cat. No.	Page	Cat. No.	Page	Cat. No.	Page	Cat. No.	Page	Cat. No.	Page
5012	18	5143	98	5326	42	5365	108	5392	102
5013	18	5144	98	5327	52	5367	108	5393	102
5014	18	5145	98	5328	52	5368	112	5394	102
5015	18	5146	98	5331	54	5369	112	5395	102
5016	18	5147	98	5332	54	5372	110	5396	102
5017	18	5149	98	5335	56	5373	110	5397	102
5019	18	5195	106	5339	76	5374	110	5398	102
5020	18	5196	106	5340	76	5375	110	5399	114
5022	20	5197	106	5346	100	5376	110	5400	104
5023	20	5198	106	5347	100	5377	110	5401	104
5024	22	5199	106	5348	100	5378	112	5402	104
5025	22	5200	106	5349	100	5379	112	5403	30
5026	22	5201	106	5350	100	5380	114	5404	30
5027	28	5202	106	5351	100	5381	114	5405	30
5029	16	5201	106	5352	100	5382	114	5406	34
5030	16	5204	106	5353	100	5383	114	5407	34
5135	98	5205	106	5354	100	5384	102	5408	34
5136	98	5206	106	5355	100	5385	102	5409	34
5137	98	5207	106	5356	100	5386	102	5410	34
5138	98	5208	106	5357	100	5387	102	5411	34
5139	98	5209	106	5358	100	5388	102	5415	46
5140	98	5321	40	5359	100	5389	102	5416	46
5141	98	5324	40	5360	100	5390	102	5417	46
5142	98	5325	42	5364	106	5391	102	5418	46

Index to List Numbers—Continued

Cat. No.	Page	Cat. No.	Page	Cat. No.	Page	Cat. No.	Page	Cat. No.	Page
5419	72	5454	86	5478	86	5504	48	5528	78
5420	72	5455	84	5479	92	5505	48	5529	30
5421	72	5456	82	5480	92	5506	50	5530	30
5422	40	5457	82	5481	26	5507	50	5531	30
5423	42	5458	82	5482	26	5508	50	5532	80
5424	70	5459	82	5483	26	5509	58	5533	90
5425	70	5460	86	5484	94	5510	58	5534	96
5426	60	5461	86	5485	94	5511	58	5535	114
5427	60	5462	88	5486	32	5512	60	5536	96
5428	60	5463	88	5489	36	5513	60	35000	12
5429	80	5464	88	5490	36	5514	60	35001	12
5430	80	5465	88	5491	38	5515	62	35002	12
5431	82	5466	88	5492	38	5516	62	35003	12
5432	82	5467	36	5493	38	5517	62	35004	12
5433	82	5468	36	5494	38	5518	66	35005	12
5434	82	5469	64	5495	44	5519	66	35006	14
5435	82	5470	64	5496	44	5520	68	35007	14
5436	82	5471	64	5497	44	5521	68	35008	14
5440	84	5472	32	5498	48	5522	68	35009	18
5441	84	5473	84	5499	48	5523	72	35010	18
5442	84	5474	84	5500	48	5524	74	35011	18
5443	46	5475	84	5501	48	5525	74	35012	18
5444	46	5476	82	5502	48	5526	74	35021	20
5445	46	5477	86	5503	48	5527	74	35028	16
5446	46								



