

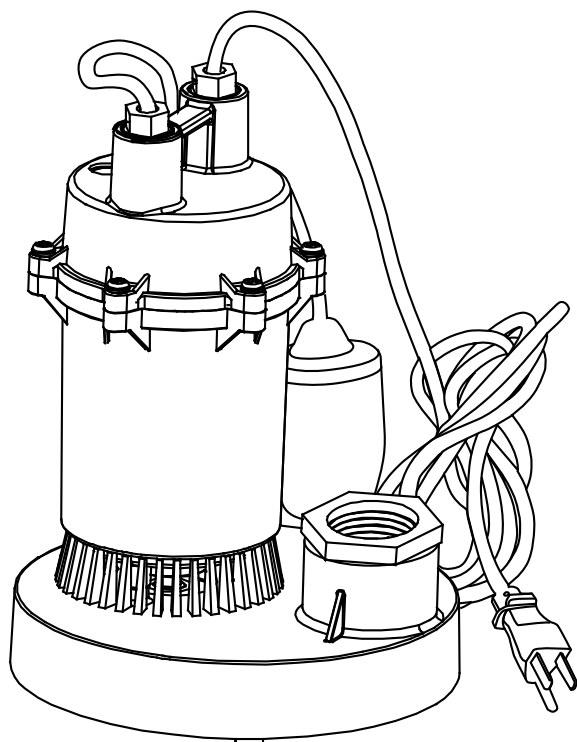


## OWNER'S MANUAL

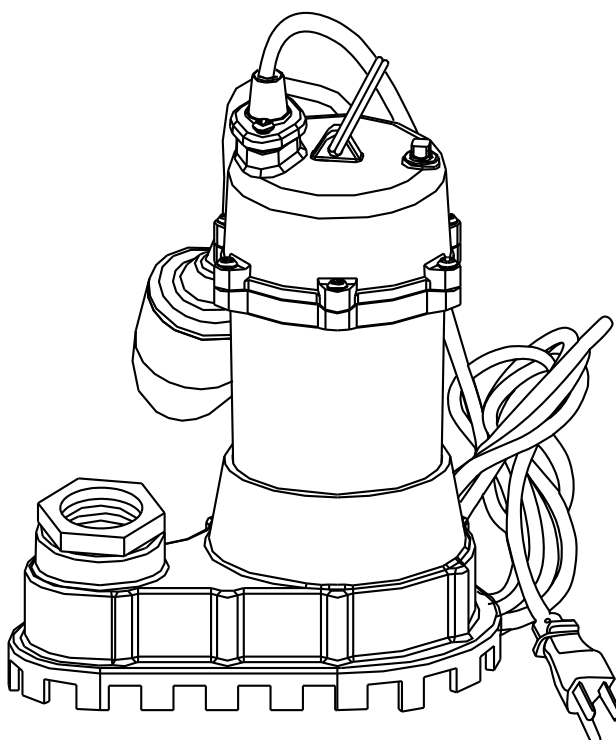
---

# 1/3 HP SUBMERSIBLE SUMP PUMP

**Model #WSSP3**



**Model #WSSPC3**



---

WATER SOURCE  
2053 S.E. 37<sup>th</sup> St. Suite A  
Grimes, IA 50111  
1-800-346-7611

## PREINSTALLATION CHECK

Inspect this pump before it is used. Occasionally, pumps can be damaged during shipping. If the pump or components are deformed, cracked, or there is an oil leak, call us Toll Free at: 1-800-346-7611, or e-mail: sales@watersourceusa.com, Monday – Friday between 8:00 a.m. – 4:30 p.m., EST. Do not return the pump to the store. ATTEMPTING TO USE A DAMAGED PUMP can result in personal injury or death!

## DESCRIPTION

This pump is designed for home sump applications. The pump is built with thermal overload protection and auto reset. The pump is equipped with a 3-prong grounding-type power cord. The ball bearings on the motor shafts never need to be lubricated. Pump only water with this pump. It is also not engineered to be run continuously as a “fountain” or “waterfall” pump. And also it should NOT be used in water containing fish. This pump has not been tested or approved for use in swimming pools or in salt-water marine areas.

## PERFORMANCE

Model	HP	GPM of Water @ Total Feet (Meters) of Lift				Maximum Lift
		5 ft. (1.5 m)	10 ft. (3 m)	15 ft. (4.6 m)	20 ft. (6.1 m)	
WSSP3	1/3	43	40.3	31.2	18.9	23 ft. (7.0 m)
WSSPC3	1/3	46.5	38.6	27.2	8.5	23 ft. (7.0 m)



## SAFETY INFORMATION

Please read and understand this entire manual before attempting to assemble, operate or install the product. If you have any questions regarding the product, please call customer service at 1-800-346-7611, 8 a.m. - 5 p.m., EST, Monday - Friday.

### WARNING

- **Do not pump flammable or explosive liquids such as oil, gasoline, kerosene, ethanol, etc. Do not use in the presence of flammable or explosive vapors. Using this pump with or near flammable liquids can**

## SPECIFICATION

- Power supply required..... 115V, 60 HZ
- Water temperature range..... Max.77°F (25°C)
- Individual branch circuit required ..15 Amp minimum
- Discharge .....1-1/2 in. FNPT/1-1/4 in. FNPT (with adapter)
- Motor Type .....Permanent Split Capacitor, with Thermal Overload Protection
- Motor Duty .....Continuous
- Power cord .....SJTW, 18AWG/3C, 10ft

**NOTICE:** This unit is not designed to be used to pump salt water or brine! Use with salt water or brine will void warranty.

## CONSTRUCTION

- Motor housing....Die casting aluminum for WSSP3  
Cast iron for WSSPC3
- Volute.....Thermoplastic for WSSP3  
Cast iron for WSSPC3
- Impeller.....Reinforced thermoplastic

### **cause explosion or fire, resulting in serious personal injury and/or property damage.**

- Always disconnect the pump from its power source before installing, inspecting, maintaining, or repairing.
- Do not stand in water when the pump is connected.
- Do not touch the pump housing while it is operating, as the pump may be HOT and can cause serious skin burns.
- Do not disassemble the motor housing. The motor has NO repairable internal parts, and disassembling may cause oil leakage or dangerous electrical wiring issues.

## CAUTION

- This pump is designed for home sump applications. The pump is equipped with a 3-prong grounding-type power cord. The ball bearings on the motor shafts never need to be lubricated.
- This pump is made of high-strength, corrosion-resistant materials. It will provide trouble-free service for a long time when properly installed, maintained, and used. However, inadequate electrical power to the pump, dirt, or blockage by ice or debris may cause the pump to fail, eventually bringing about additional water damage. To minimize the potential for water damage due to pump failure, please carefully read the manual and follow the instructions regarding common pump problems and remedies or call one of our pump experts at 1-800-346-7611.
- This pump has not been tested or approved for use in swimming pools or in salt-water marine areas. **It is also not engineered to be run continuously as a “fountain” or “waterfall” pump.** Because this pump has an oil-filled motor, it should NOT be used in water containing fish. Pump only water with this pump.
- For safety, the pump motor has an automatic resetting thermal protector that automatically will turn off the pump if it becomes too hot. **Overuse of this feature will damage the pump and will void the warranty.**
- Once the thermal protector detects that the pump has cooled to a safe temperature, it will allow the pump to operate normally. If the pump is plugged in, it may restart unexpectedly.

## Additional Safety Precautions

1. Know the pump applications, limitations, and potential hazards.
2. Make certain the electrical power source is adequate for the requirements of the pump.
3. ALWAYS disconnect the power to the pump before servicing.
4. Release all pressure (drain all water) within system before servicing any component.
5. Secure discharge line before starting pump. An unsecured discharge line will whip, possibly causing personal injury and/or property damage.
6. Secure the pump on a solid base to keep the pump vertical and above mud and sand during operation to maximize pumping efficiency and prevent clogging and premature pump failure.
7. Check that all pipe connections are tight to minimize leaks.
8. Connect the pump DIRECTLY to a grounded, GFCI outlet.
9. Extension cords may not deliver sufficient voltage to the pump motor. Extension cords present a life threatening safety hazard if the insulation becomes damaged or the connection ends fall into water.
10. Make certain the electrical circuit to the pump is protected by a 15 Amp or larger fuse or circuit breaker.
11. Periodically inspect the pump and system components to be sure the pump inlets are free of mud, sand, and debris.  
DISCONNECT THE PUMP FROM THE POWER SUPPLY BEFORE INSPECTING.
12. Do not handle pump or pump motor with wet hands or when standing on wet or damp surface, or in water.
13. Wear safety glasses at all times when working with pumps.
14. Follow all electrical and safety codes, particularly the National Electrical Code (NEC) and in the workplace, the Occupational Safety and Health Act (OSHA).
15. This unit is designed only for use on 115 volts (single phase), 60 Hz, and is equipped with an approved 3-conductor cord and 3-prong grounded plug. DO NOT REMOVE THE GROUND PIN UNDER ANY CIRCUMSTANCES. The 3-prong plug must be directly inserted into a properly installed and grounded 3-prong, grounding-type receptacle. Do not use this pump with a 2-prong wall outlet. Replace the 2-prong outlet with a properly grounded 3-prong receptacle (a GFCI outlet) installed in accordance with the National Electrical Code and local codes and ordinances. All wiring should be performed by a qualified electrician.
16. Protect the electrical cord from sharp objects, hot surfaces, oil, and chemicals. Avoid kinking the cord. Do not use damaged or worn cords.

## PREPARATION



**WARNING:** Always use handle to lift pump. Never use power cord to lift pump. To avoid skin burns, unplug and allow time for the pump to cool after periods of extended use.

Before beginning assembly of product, make sure all parts are present.

**Estimated Assembly Time (New installation):**  
**30 minutes (or longer if installing new sump pit).**

Materials Required for Assembly (not included):  
Rubber-hose (6-10" with stainless steel clamps),  
Check valve, PVC pipe, PVC elbow, Thread Tape,  
PVC Purple Primer, and PVC Cement

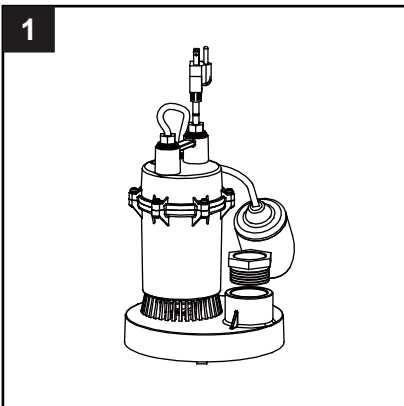
**Note:** After the installation of the necessary plumbing, check valve and rubber hose, follow the glue manufacturer's instructions for safety precautions and curing time. The pump is ready for operation.

The pump should rest on a level, solid base.

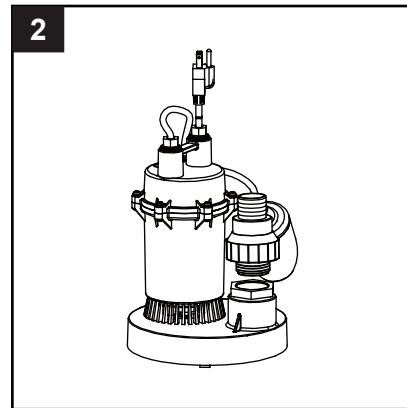
- Do not suspend the pump by the discharge hose or power cord.
- Keep the pump inlet screen clear.
- Do not install pump directly on sand or dirt.

## INSTALLATION INSTRUCTIONS

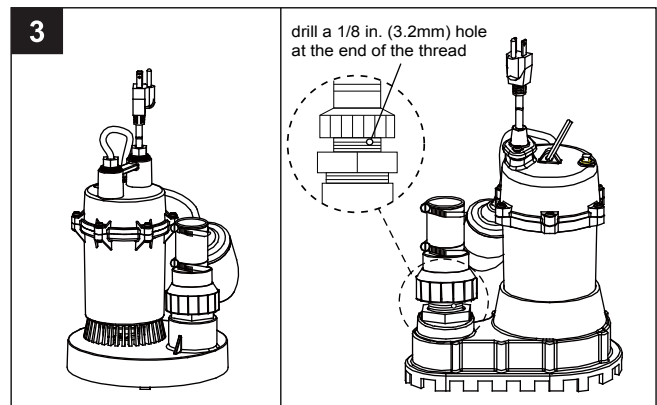
**Always use the handle to lift the pump. Never use the power cord to lift the pump. To avoid skin burns, unplug the pump and allow time for it to cool after periods of extended use.**



1. Wrap threads of the 1 1/4 in. adapter (included) with thread tape, then screw the adapter into pump outlet hand tight plus 1 turn with a wrench.  
Notice: If the discharge pipe you will connect is 1 1/2 in., no need to screw the 1 1/4 in. adapter into the pump outlet, just screw a 1 1/2 in. check valve into the pump outlet directly.

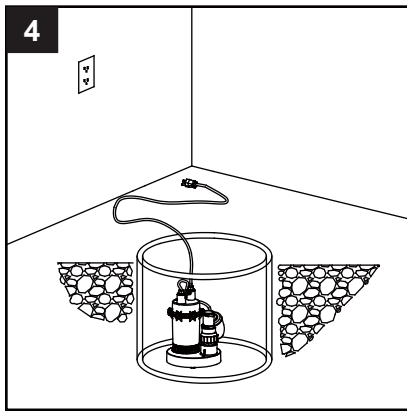


2. Install a check valve (not included) into the pump (or adapter if using 1-1/4 in. pipe).



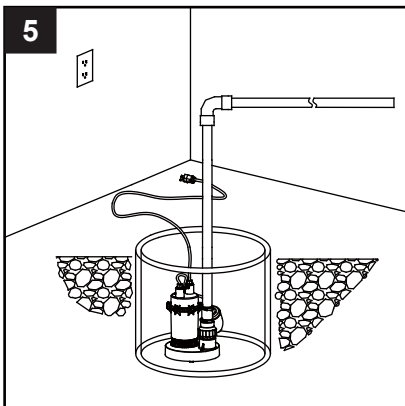
3. Connect a short length (6-10 in.) of rubber hose to the check valve.

**Notice:** For cast iron sump pump WSSPC3 if your check valve is not equipped with an air bleed hole to prevent airlocking pump, drill a 1/8 in. (3.2 mm) hole at the end of the thread.



4. Place the pump in the sump, make sure that nothing interferes with switch operation.

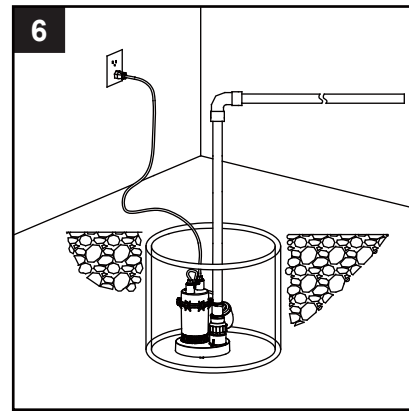
**Notice:** Remove all small stones, gravel, mud, or other debris from the sump pit before installing the pump. The minimum diameter of the sump pit is 14 in. for this pump. The minimum depth of the pit is 16 in. for this pump. Construct the sump pit with tile, concrete, steel, or plastic. Check your local plumbing codes for approved materials and proper installation.



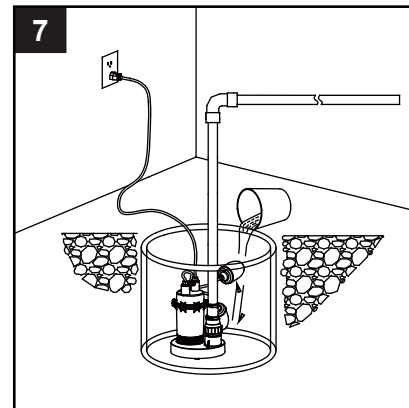
5. Connect the discharge pipe to the other end of the rubber hose, tighten the clamp with screwdriver.

**Notice:** A rigid discharge pipe is recommended to prevent the pump from moving. If a flexible discharge hose is used, the pump must be secured in a manner that prevents the pump from moving. If the pump is allowed to move, the float switch could be restricted by the sump wall, preventing the pump from turning on or off.

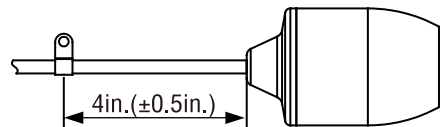
**Notice:** After the installation of the necessary plumbing, check valve and rubber hose, follow the glue manufacture's instructions for safety precautions and curing time. The pump is ready for operation.



6. Plug the pump into a GFCI outlet.



7. Check the pump by filling the sump with water and observe the pump's operation through one complete cycle and make sure the pump cannot move in the sump and float switch moves freely up and down.



**WARNING:** The tether length (distance between the float and clamp, see picture above) is factory pre-set 4 in. PLEASE DO NOT ADJUST IT FREELY to avoid any failure to pump.

## OPERATION INSTRUCTIONS

Do not handle this pump or plug in or unplug this pump with wet hands or while standing in water, unless you are certain all power has been turned off to the pump.

**Remember, the pump should be connected only to a properly grounded, GFCI outlet**

Do not handle this pump or plug in or unplug this pump with wet hands or while standing in water, unless you are certain all power has been turned off to the pump.

**Remember, the pump should be connected only to a properly grounded, GFCI outlet**

**Running the pump without sufficient water will damage the pump and void the pump's warranty.**

1. Make certain the pump is submerged in water. Running the pump dry can damage to the shaft seal.
2. Plug the pump into a 115V GFCI power outlet. The pump will start operating if the float switch moves over the pump top. The water will be pumped out. When the

water lowers to certain level, the float switch will turns off the pump.

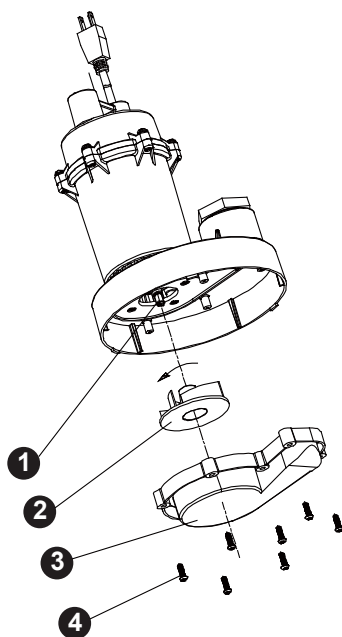
3. The motor is equipped with an automatically resetting thermal overload protector. If the motor gets too hot, the overload protector will shut off the pump before it is damaged. When the motor has cooled sufficiently, the overload protector will reset, and the motor will restart.

**NOTICE:** If the overload protector stops the pump repeatedly, disconnect the power from the pump and check to find the problem. Low voltage, a long extension cord, clogged impeller, screen blocked by debris, or water that is too hot can cause motor overheating.

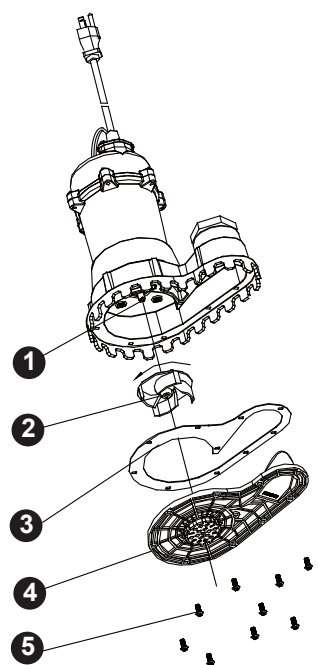
## TROUBLESHOOTING

**Do not disassemble the motor housing. This pump has NO repairable internal parts, and disassembling may cause leakage or dangerous electrical wiring conditions.**

If you have any questions regarding the product, please call customer service at 1-800-346-7611, 8 a.m. - 5 p.m. (EST), Monday – Friday.



4	Screws	7
3	Volute	1
2	Impeller	1
1	Shaft	1
Item	Description	Qty



5	Screws	10
4	Base	1
3	Gasket	1
2	Impeller	1
1	Shaft	1
Item	Description	Qty

Problem	Possible Cause	Corrective Action
Pump does not start or run	1. Blown fuse 2. Tripped breaker 3. Plug disconnected 4. Corroded plug 5. Thermal overload 6. Motor failed 7. Float switch failed  8. Float switch obstructed	1. Replace fuse 2. Reset breaker 3. Secure plug 4. Clean plug prongs 5. Unplug for 30 minutes, then plug in 6. Call 1-800-346-7611 7. Please call us at 1-800-346-7611 for a replacement float switch, or go to the store where you purchased this pump to purchase a new float switch. 8. Make sure the float switch has room to move and is not getting caught on any obstructions. Make sure your pit is at least 14 in. wide.
Pump operates but pumps little or no water	1. Screen blocked 2. Impeller loose on shaft 3. Impeller broken	1. Clean screen 2. Reassemble impeller (See Picture above) 3. Call 1-800-346-7611

## WARRANTY

This product is warranted against manufacturing defects for a period of 12 months from the date of purchase. Any misuse, abuse, or modification automatically voids this warranty. Water Source, LLC will repair or replace the pump if, in its sole determination, the pump failed due to defects in materials or workmanship.

### WARRANTY EXCLUSIONS

1. Neither Water Source, LLC, nor the store that sold this pump shall in any event be liable for any labor or similar expenses incurred in removing or repairing this pump.
2. Water Source, LLC specifically disclaims any implied warranties of merchantability and fitness for a particular purpose.
3. In no event shall Water Source, LLC be liable for consequential, incidental, or special damages resulting from or related in any manner to any components or accessories.
4. Water Source, LLC disclaims all liability for improper installation or improper use of this product.

Some states do not allow the exclusion or limitation of incidental or consequential damages. The above limitations and exclusions may not apply to you. In addition to the rights given you by this warranty, you may also have other rights which vary from state to state.

For warranty claims, DO NOT RETURN PUMP TO THE STORE!

Call our customer service department at: 1-800-346-7611, Monday - Friday, 8:00 a.m. - 5:00 p.m., EST

Printed In China