

CLICK ANYWHERE on THIS PAGE to RETURN to HARDBOARD & MASONITE USED in WORKS OF ART at InspectApedia.com

Clement Kennedy. [1894-1976]

C. Kennedy [Clement Charles Kennedy] was born in Albany, Western Australia in 1894. He married in 1931 and went on to reside in Bayview Street, McMahon Point. Later the artist moved to Sydney in 1938 with his son Gerard Kennedy [who become an Actor]. 'Clem,' as he was affectionately known, continued working as an artist throughout his life and went on to become an *Archibald prize* and *Wynne Prize Finalist* numerous times over! [see database list for official records]. Kennedy was rumoured to have worked alongside luminaries such as Sidney Nolan and others from the Australian school. Landscape, *Untitled ca 1970* is an important piece showing the development of Kennedy's original style and techniques, not to mention the artist's masterful understanding of the Australian topography. His works remain part of the quintessential collection of the *National Gallery of NSW* and in private collections. Works available by the significant Australian artist, Clement Kennedy are rarely available on the market, making Landscape *Untitled ca 1970* a special acquisition and investment opportunity.

Landscape with Emus & Crows, Untitled

Artist: Clement Kennedy

Date: Ca 1970's

Medium: Oil on board

Size: H 60.5cm X W91cm

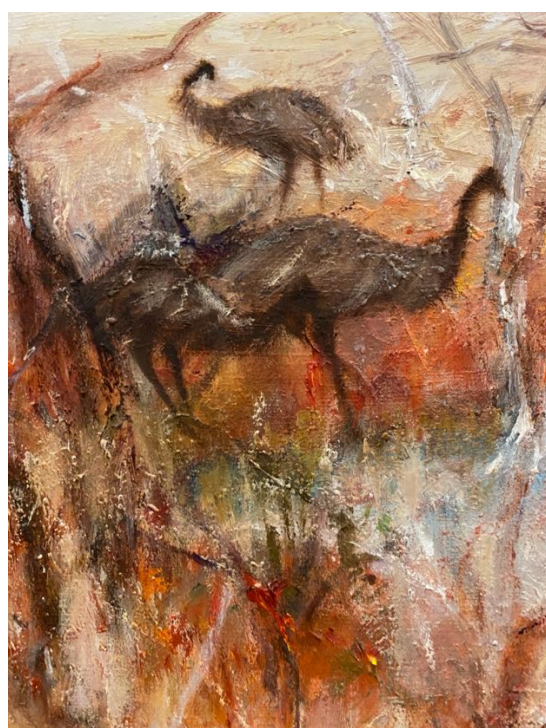
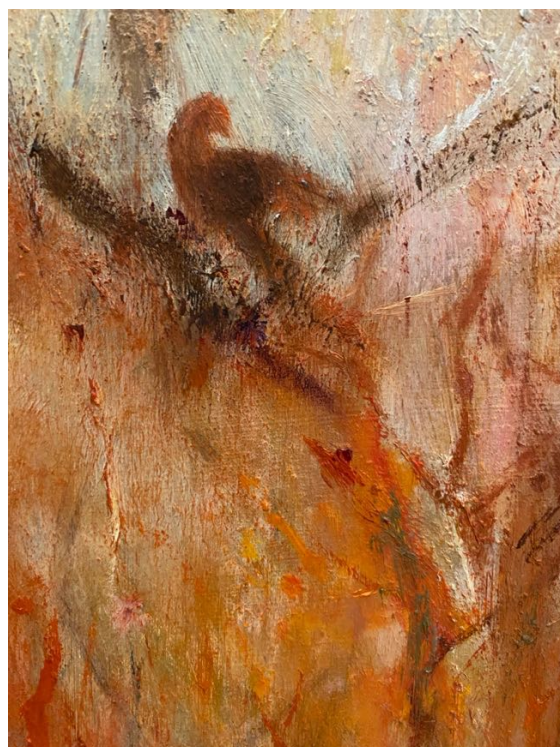
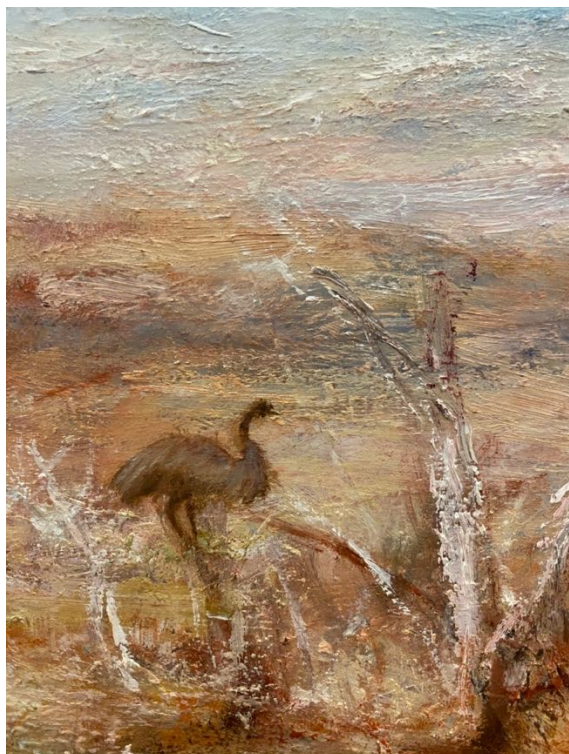


Landscape Untitled ca1970 oil on canvas size H 60.5cm X W91cm



Detail: signature C. Kennedy

Detail: Landscape with Emus & Crows, *Untitled* 1970



Archibald Prize & Wynne Prize

Wynne Prize Finalist 1935

Clement Charles Kennedy - West Australian Landscape

Clement Charles Kennedy - West Australian Landscape

Clement Charles Kennedy - West Australian Landscape

Wynne Prize Finalist 1938

Clement Charles Kennedy - Hush of Noon

Clement Charles Kennedy - Pastoral

Clement Charles Kennedy - South Como

Wynne finalists 1939

Clement Charles Kennedy - Roseville Chase

Clement Charles Kennedy - Afternoon

Wynne Prize Finalist 1940

Clement Charles Kennedy - Largo

Clement Charles Kennedy - Careel Heas

Archibald Finalist 1934 & 1935

Clement Charles Kennedy - Peter Foulkes, Esq.

Clement Charles Kennedy - Portrait

Archibald Prize finalist 1938

Clement Charles Kennedy - Clement Kennedy

Clement Charles Kennedy - Thea Rowe

Clement Charles Kennedy - Meg.

Archibald Finalist 1939

Clement Charles Kennedy - D.A.W. Robertson, Esq.

Clement Charles Kennedy - Miss Barbara Dare

Clement Charles Kennedy - Miss Gwen Friend

Archibald finalist 1968

Clement Charles Kennedy - Gerard Kennedy actor TV and stage

Archibald Prize Finalist 1942

Clement Charles Kennedy - Flying Officer S. Watson

Clement Charles Kennedy - Mr Humphrey Bishop

C. Kennedy, Early works
[National Gallery NSW]



[artnet] Perth Fashion Clement Kennedy oil on canvas 116 X 138cm