

Your Heating...

AND WHAT TO DO ABOUT IT

Heating is as important to your home as the brick-and-mortar or the furniture. Because modern heating is more than being cozy and warm. It's filtered warmth. Properly-humidified warmth. *Healthful, truly comfortable warmth.*

Here are three big, basic questions you'll want answered about your heating:

IS IT DEPENDABLE?

Unlike most of your home's structure, a heating unit is made up of moving parts, hidden parts, parts subject to intense heat and pressure. They must operate perfectly, permanently. One of the best ways to insure a trouble-free heating system is to look for a manufacturer with a ranking reputation for dependable equipment—such as Thatcher Furnace Company.

Thatcher has been turning out fine heating equipment longer than any other name in the field—for over four generations of home builders! Many Thatcher units installed 40 and 50 years ago are still in active, efficient service.

IS IT ECONOMICAL TO OPERATE?

Many modern heating units, such as Thatcher's, are now equipped with features that can save real dollars on your fuel bill. Thatcher's fuel-saving features are explained on the following pages. Home owners actually report fuel savings up to 15% with Thatcher units.

IS IT THE RIGHT TYPE AND SIZE FOR MY HOME?

This has a lot to do with the operating efficiency and economy of heating your home. Your contractor and arch-

itect can give you excellent advice on what type of heating unit is best for the home you are planning. You'll find your Thatcher dealer trained and competent on all heating problems and glad to give you a hand in selecting the right model to fit your needs. (Send us the enclosed postcard and we will give you his name.) Whatever your needs—warm air, hot water, radiant heating... oil-fired, gas-fired, coal-fired—Thatcher has just the right model for you.

NOTE:

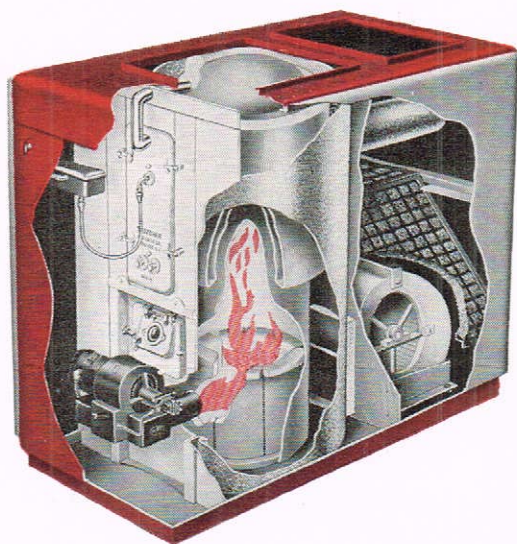
Thatcher is a *specialist in heating* and only heating. We concentrate all our technical skill, research, production and service facilities in this one field. We make a dependable, economical, line of residential heating equipment. And we've been making it longer than any other name in heating—for 100 years.



GET STEADY, ECONOMICAL,

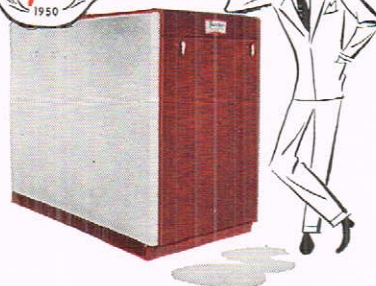
healthful heat

THATCHER WINTER



OIL-FIRED

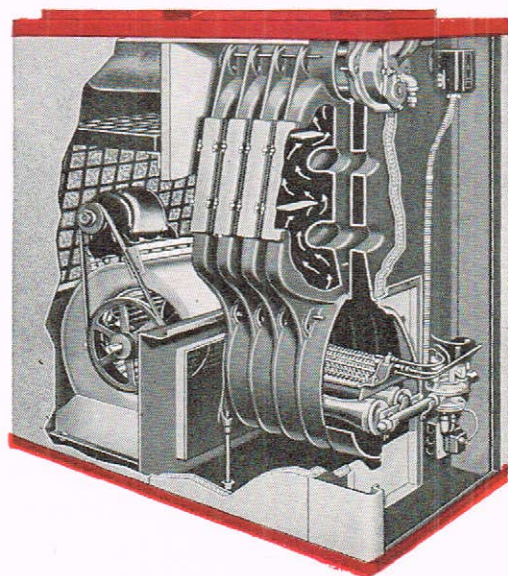
Comfortmaster



GIVES MORE HEAT — TAKES LESS FUEL — Extra-heavy heat extractors save the heat for your rooms instead of sending it up through your chimney.

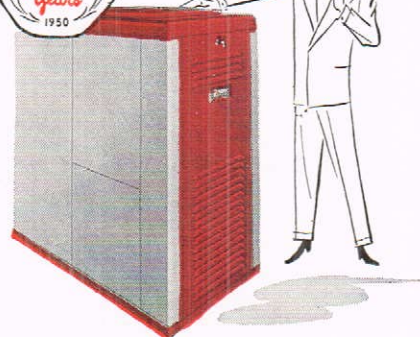
PROTECTS HEALTH AND FURNISHINGS — Automatic vaporizing humidifier injects proper amount of health-guarding moisture into the air. Assures longer life for household furnishings, too. Humidifier is fully-automatic. Heavy cast-iron—for long service.

WHISPER-SILENT OPERATION Heavy-duty blower is specially-designed, quiet, multi-blade type, furnishes generous flow of heat without a sound.



GAS-FIRED

Comfortmaster



DESIGNED TO SAVE FUEL — The travel of the fire is staggered over a greater area of the super-sized heat extractors. Result: Extra heat for amount of fuel used.

APPROVED BY AMERICAN GAS ASSOCIATION for Butane-air and Propane gas as well as conventional city gas.

AUTOMATIC VAPORIZING HUMIDIFIER for health-guarding moisture in the air you breathe.

WITH THESE FULLY AUTOMATIC

AIR CONDITIONERS

JUMBO-SIZED REMOVABLE FILTERS remove dust, dirt, pollen from your air.

MULTI-BLADE BLOWER rubber mounted for quiet operation, generous flow of heat.

Engineering Data and Dimensions

Number of Unit	B.T.U. Capacity at register	Recommended Oil Consumption G.P.H.	Height	Length	Width
V-116	90,000	1.0	46	55	30
V-120	140,000	1.5	50	65	35 $\frac{3}{4}$

KEEPS HOME CLEAN, CUTS DOWN DUST AND POLLEN — Jumbo-sized filters remove dirt, dust, pollen from the air before it enters your home. Filters are long-lasting, easy to clean and inexpensive to replace.

Engineering Data and Dimensions

Model Number	B.T.U. at register	C.F.M. at 85° Rise	Height	Length	Width
GA-54	54,000	670	52 $\frac{1}{2}$	37	27
GA-71	71,000	850	52 $\frac{1}{2}$	40	27
GA-87	87,000	1040	52 $\frac{1}{2}$	47	27
GA-102	102,000	1230	52 $\frac{1}{2}$	50	27
GA-116	116,000	1380	52 $\frac{1}{2}$	56 $\frac{1}{2}$	27
GA-130	130,000	1560	52 $\frac{1}{2}$	59 $\frac{1}{2}$	27



GAS-FIRED *Hi-Boy*

For quick, safe, efficient heat...for smaller homes — the newly-developed, fully-perfected Gas-Fired Hi-Boy.

SUPER-SPEED THERMOSTAT RESPONSE for faster heat, less fuel. New, quicker response to your thermostatic controls means almost instantaneous heat. Costs less, since less fuel is needed.

AGA APPROVED — Equipped with the latest safety devices. Fully approved by the American Gas Association, after undergoing their stringent safety and performance tests.

SPACE-SAVING, compact design. Perfect for the smaller, basementless home. Easily installed in utility room or similar space. Handsome maroon crinkle-finish casing looks smart in any room, is easily cleaned.

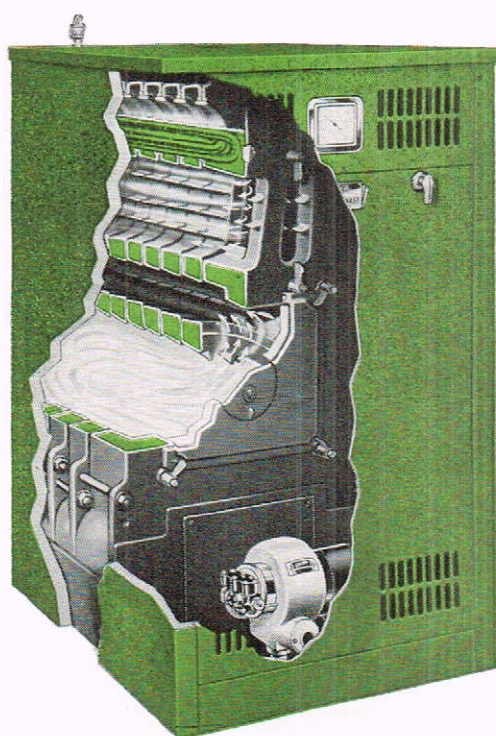
STURDY STEEL HEATING ELEMENT
PORT TYPE BURNER

Model Number	B.T.U. output at register	CFM at 95° rise	Height	Width	Depth
491-42	42,000	450	55	20	23
491-55	55,000	580	55	23	25 $\frac{1}{2}$
491-70	70,000	740	55	26	28

*for hot water heat *for steam heat

*for hot water whenever you want it

HERE'S THE SUPERIOR BOILER WITH THE **AUTOMATIC FEATURES**



THATCHER

*Oilmaster
Boiler*

HEAVY-DUTY, CAST IRON, FOR YEARS OF SERVICE

There's over a ton of *cast iron* in this durable boiler. Here's a piece of equipment that is built to last. Tongue and groove joints specially designed — can't leak or short-circuit fire travel.

"FIVE-WAY FIRE TRAVEL" KEEPS FUEL COSTS DOWN

Heat-producing gases travel back and forth through this boiler *five* times — squeezing every bit of heat out of every drop of oil. Another money-saving feature: Thatcher's boiler fins are extra-extended, provide greater heating surface—means more heat from less fuel.

THATCHER TANKLESS HEATER GIVES YOU AUTOMATIC HOT WATER, SAVES SPACE

Plenty of domestic hot water whenever you want it — year 'round! Tankless heater fits into back compartment of boiler, saves storage tank (optional equipment).

Engineering Data and Dimensions

Boiler Number	Net I-B-R Rating		Recommended Oil Consumption G.P.H.	Height	Width	Length
	Steam sq. ft.	Water sq. ft.				
015-A	350	560	1.30	54	28	44 $\frac{5}{8}$
016-A	450	720	1.60	54	28	48 $\frac{5}{8}$
017-A	550	880	1.90	54	28	52 $\frac{5}{8}$
018-A	650	1040	2.25	54	28	56 $\frac{5}{8}$
019-A	750	1200	2.50	54	28	60 $\frac{5}{8}$
020-A	850	1360	2.80	54	28	64 $\frac{5}{8}$

A COMPLETE LINE OF RESIDENTIAL HEATING EQUIPMENT
• WINTER AIR CONDITIONERS • FURNACES • BOILERS • OIL
FIRED • GAS FIRED • COAL FIRED • GARWOOD, NEW JERSEY

