

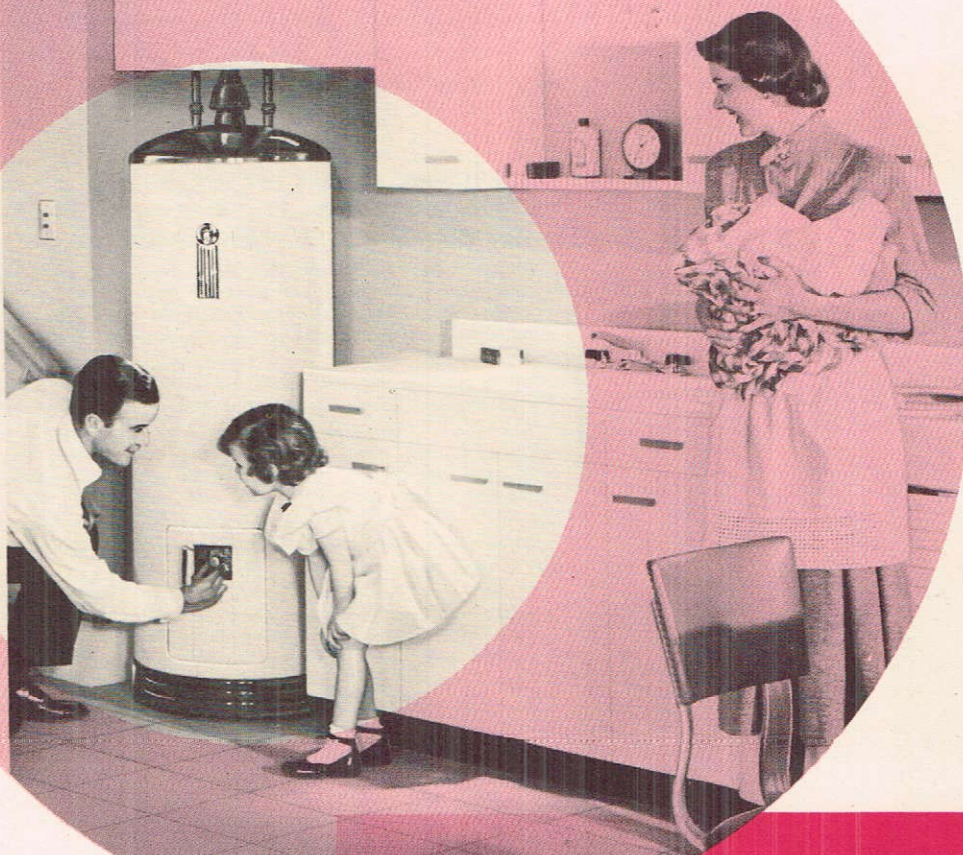
CLICK ANYWHERE on THIS PAGE to RETURN to RHEEM WATER HEATER  
AGE & MANUALS at [InspectApedia.com](http://InspectApedia.com)

THERE'S A RHEEM JUST RIGHT FOR EVERY HOME

# Rheem

## AUTOMATIC WATER HEATERS

ALL TYPES  
ALL SIZES  
ALL FUELS



# Rheem

MANUFACTURING COMPANY

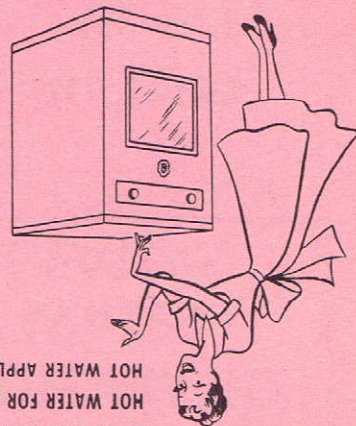
*World's Largest Manufacturer  
of Automatic Water Heaters*



# WHEN YOU BUY AN AUTOMATIC



BE SURE YOU GET ONE  
LARGE-ENOUGH TO GIVE YOU  
HOT WATER FOR ALL YOUR  
HOT WATER APPLIANCES

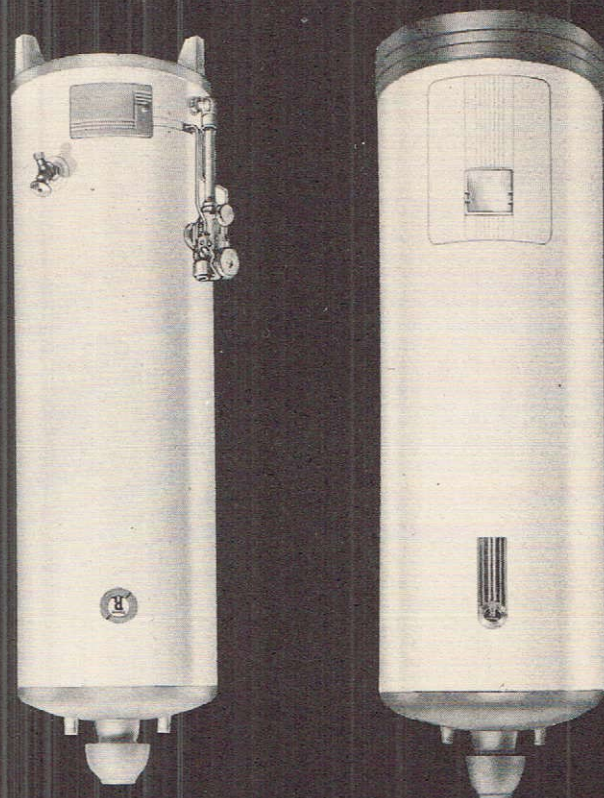


**BUY OVER-ALL QUALITY** Be sure the water heater you select is top quality through-  
out... soundly engineered, made of the best materials and fabricated by highly skilled craftsmen  
who feel a real responsibility to the ultimate users of the products they make. You get all this  
when you buy Rheem.

**BUY THE LATEST SCIENTIFIC DESIGN** For maximum efficiency, ease of opera-  
tion and economy, insist on an automatic water heater incorporating the latest scientific advances.  
Rheem leads the field in the development of scientific refinements in water heater design.  
Rheem scientists and engineers are constantly at work in plants and laboratories maintaining  
that lead.

**BUY DURABILITY** You expect years of satisfactory service... so be sure the water  
heater you buy has the sturdiness to provide it. Rheem water heaters are built throughout for  
durability. And the Rheem galvanized steel storage tank—most vital point insofar as long life is  
concerned—is made by Rheem's special patented process for greater resistance to corrosion.

## GAS WATER HEATERS



**EXCLUSIVE DESIGN FEATURES  
OF RHEEM AUTOMATIC GAS WATER HEATERS  
ASSURE SUPERIOR PERFORMANCE**

Rheem Automatic Storage Gas Water Heaters are available in a  
great range of models and sizes for safe and efficient operation  
with all types of gases. The two models illustrated are recommended  
for better class new homes and for replacement of old units.

**COMPLETELY AUTOMATIC** Thermostatic control of Grayson Uni-  
trol is set with finger-tip touch. Burner then goes on and off auto-  
matically, maintaining temperature you want and conserving fuel.

**100% SAFE** Grayson Uniflow assures complete safety. If pilot light  
should go out, flow of all gas to both main burner and pilot is  
automatically cut off. And, during pilot lighting procedure, no gas  
can flow to main burner.

**FAST HEATING** Flue contains specially formed reverse spiral  
baffle which effectively forces combustion gases against inner flue  
achieving maximum heat transfer to water.

**ECONOMICAL** Combustion chamber and sturdy drilled-port-type  
burner are scientifically designed for efficient, economical use of  
fuel. Thick wall of highly resistant fiberglass insulation surrounds  
storage tank, keeps water hot for long periods without reheating.

**CONSTRUCTED FOR LONG LIFE** Maximum durability is built into  
every feature. Tank of extra-heavy galvanized steel is made by  
exclusive Rheem-patented (Patent No. 2,444,833) process to with-  
stand corrosion and working pressures greatly in excess of normal  
operation.

**EXTRA, TWIN MAGNESIUM-ANODE PROTECTION** For extra  
protection against corrosive elements in water, Rheem Series 41  
is factory-equipped with twin magnesium anodes. This is optional  
equipment for other Rheem models and can be supplied at moderate  
additional cost.

**THE RIGHT MODEL FOR EVERY HOME** Shown here are two  
widely used Rheem models. Both are available in 20, 30 and 40  
gal. sizes with high reheating capacities. Series 31 carries liberal  
5-year protection plan. Series 41—outstanding value in higher price  
range—carries liberal 10-year protection plan and features heavier  
steel tank plus twin magnesium anodes. Rheem makes other gas  
models in various sizes, including 50, 75 and 100 gal. storage cap-  
acities. See sizing chart... There's a Rheem just right for your home.  
**TESTING LABORATORY APPROVED** Rheem Gas Water Heaters  
are approved by American Gas Assn. and Good Housekeeping.

### SIZING CHART

American Gas Association Water Heating Committee  
MINIMUM REQUIREMENTS FOR NORMAL REQUIREMENTS

Number Bathrooms	Number Bedrooms	Gallons Storage Capacity	Recommended* Rheem	AGA Standard 60" Rise Reheating Capacity
1	1 or 2	30	Series 31 or 41	42.0
1	3 or 4	40	Series 31 or 41	42.0
2	2 or 3	40	Series 31 or 41	42.0
2	4 or 5	50	Series 41 Large	69.9
3	3	50	Series 41 Large	69.9
3 or 4	5 or 7	75	Series 41 Large	84.0

\* Rheem model recommended to meet sizing chart specifications





# WATER HEATER FOR YOUR HOME:-

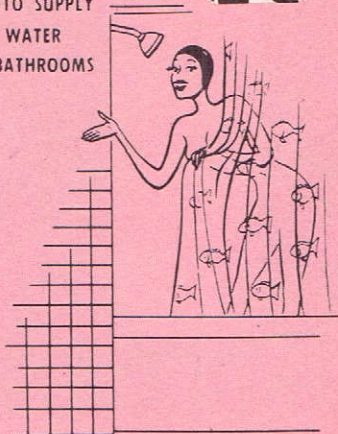
**Rheem**  
**R**

**BUY THE RIGHT TYPE AND SIZE** It's extremely important to your long-term satisfaction to get precisely the water heater suited to your needs. When you buy Rheem you make your selection from a complete line. Whatever the fuel preference or comparative fuel costs, the size of your home, the size of your family, the quantities of hot water required, there's a Rheem Automatic Water Heater just right for your needs.

**BUY ATTRACTIVE APPEARANCE** You'll want a water heater that is sleekly modern in appearance . . . easy to look at, easy to clean. Rheem Water Heaters are outstandingly attractive . . . smartly styled . . . beautifully finished. Wherever you choose to install your Rheem Water Heater—in kitchen, utility room, game room or elsewhere—its handsome modern lines will harmonize well with other features of the interior.

**BUY MANUFACTURER RELIABILITY** It pays to buy the products of a manufacturer with a longstanding reputation for outstanding products and integrity. Rheem has been a leader in the development of finer water heating equipment for many years. The name is world-famous for quality. That's one reason why Rheem today is the world's largest manufacturer of automatic water heaters.

BE SURE YOU GET ONE  
LARGE-ENOUGH TO SUPPLY  
PLENTY OF HOT WATER  
FOR ALL YOUR BATHROOMS



## RHEEM AUTOMATIC ELECTRIC WATER HEATERS PROVIDE HOT WATER SERVICE WITH MAXIMUM EFFICIENCY

In every aspect of water heater performance—efficiency, economy, ease of operation, safety, dependability and long life—Rheem Electric Water Heaters set new high standards. Made in a wide range of sizes and models, Rheem electric water heaters are available to meet power company requirements of various localities. Units shown here are ideal for replacement, modernization, and new home installation.

**COMPLETELY AUTOMATIC** Thermostatic control, set with touch of dial, automatically keeps water temperature at desired level.

**COMPLETELY SAFE** Automatic high-temperature cut-off provides guaranteed over-temperature protection, cuts off all current should excessive temperature occur. Easily reset. (Standard on Rheem Series 81 only.)

**EFFICIENT AND ECONOMICAL** Heating elements of highest quality "Nichrome" imbedded in magnesium oxide and sealed in seamless copper tube, are immersed directly in water . . . thus use all of current for water heating. Thick wall of highly resistant insulation surrounds storage tank, keeps water hot for long periods, saves electricity.

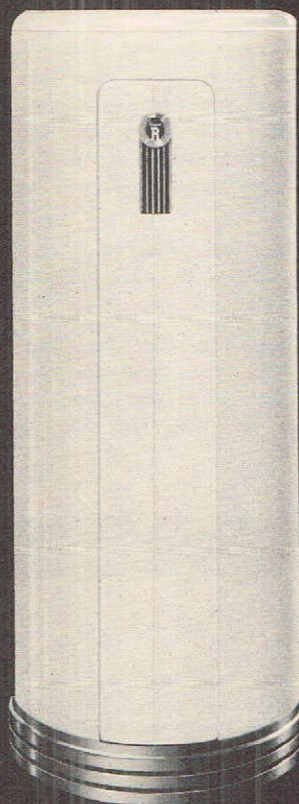
**BUILT FOR LONG LIFE** Every feature is constructed for maximum durability. Storage tank of extra-heavy galvanized steel is made by Rheem's special patented (Patent No. 2,444,833) process to withstand corrosion. It is covered by liberal 10-year protection plan.

**EXTRA, MAGNESIUM ANODE PROTECTION** For extra protection against corrosion, these units are supplied with factory-installed magnesium anodes.

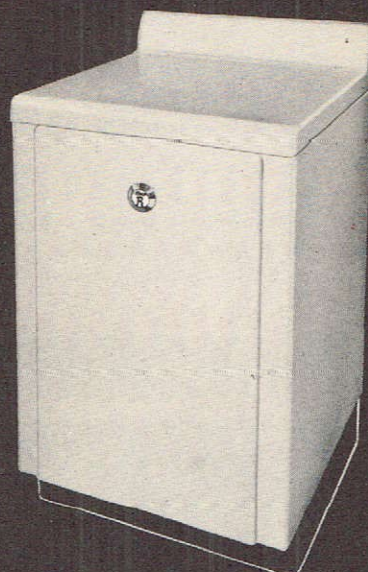
**THE RIGHT UNIT FOR EVERY HOME** Rheem Series 81 is made in round, upright storage sizes ranging from 12 to 82 gals., and in table top storage sizes of 30 to 40 gals. Table top units fit alongside other kitchen appliances, providing extra table space. Other Rheem Electrics are made in wide range of sizes. If electricity is preferred and economical fuel in your locality, there's a Rheem just right for you.

**TESTING LABORATORY APPROVED** Rheem Electric Water Heaters are approved by Underwriters' Laboratories, Inc. and carry the Good Housekeeping Guarantee.

## ELECTRIC WATER HEATERS



SERIES 81 ROUND



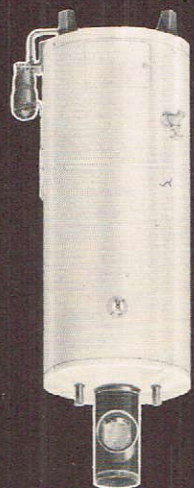
SERIES 81 TABLE TOP

### SIZING CHART AUTOMATIC ELECTRIC WATER HEATERS MINIMUM RECOMMENDATIONS

No. in family	One bathroom Average needs	Two bathrooms Average needs
	Storage Capacity Gallons	Storage Capacity Gallons
1	52	52
2	52	66
3	52	66
4	66	82
5	66	82
6	66	82
7	66	82







## OIL WATER HEATERS

FOR HIGH-EFFICIENCY, LOW-COST WATER HEATING

Rheem Automatic Storage Oil Water Heaters operate on #1 commercial grade fuel oil or kerosene, furnishing safe, efficient water heating service with a minimum of fuel.

**COMPLETELY AUTOMATIC** Thermostatic controls, set with touch of dial, maintain temperature at desired level.

**COMPLETELY SAFE** Automatic safety control shuts off fuel if pilot light is extinguished.

**AMAZINGLY ECONOMICAL** Rheem-engineered, vaporizing pot-type burner burns fuel with peak efficiency, cuts oil consumption to minimum. Insulation between jacket and storage tank maintains water temperatures without frequent reheating.

**RUGGEDLY CONSTRUCTED** Every feature is built for long, trouble-free service. Galvanized steel tank is made by Rheem's patented (Patent No. 2,444,833) process for highest quality. Unit can be equipped with magnesium anode rod protection for nominal increase in cost.

**Oil Water Heater Sizing Chart**

Number Bedrooms	Number Bathrooms	Storage Capacity Gallons
1	1 or 2	30
1	3 or 4	50
2	2 or 3	50
2	4 or 5	50

## YOU'LL BE HAPPIER IN YOUR HOME WITH A FULLY ADEQUATE . . . TRULY MODERN WATER HEATER!

Today's advanced standards of comfort, convenience and sanitation call for hot water in abundant quantity. Dish-washers, washing machines and other time-and-labor-saving devices must have adequate supplies of hot water to operate efficiently. If you wish to enjoy the fullest measure of hot water benefits in your home, insist on a soundly engineered, quality-built, truly modern water heater in the right type and size to meet your needs.

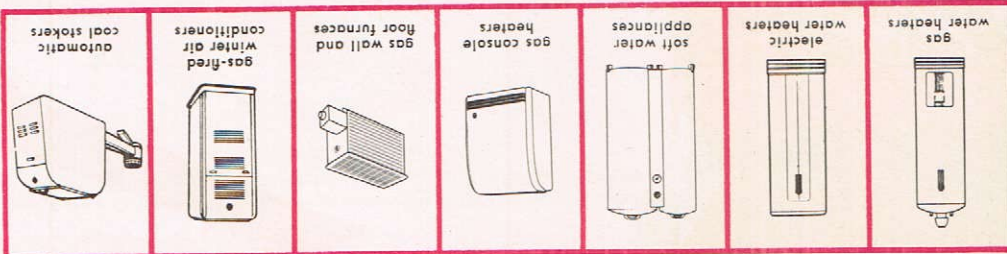
Rheem Automatic Heaters provide hot water instantly and abundantly all the time . . . they do so efficiently, economically and safely . . . and they are sturdily built for long life.

Ask your architect or builder to help you select the fuel type, model and size best suited to your requirements. If you are modernizing an old house or replacing outdated, inadequate water heating equipment, consult your merchant plumber. Always look for the sign that identifies the Rheem Reliable Dealer.

LOOK FOR  
THE SIGN  
THAT IDENTIFIES  
THE RHEEM  
RELIABLE DEALER



Rheem manufactures a large family of finer appliances for more comfortable living—water heaters, soft water appliances, heating appliances, evaporative coolers, household tanks—all made to meet Rheem world-famous standards of quality.



Rheem  
home  
comfort  
appliances

**RHEEM MANUFACTURING COMPANY**  
570 LEXINGTON AVENUE • NEW YORK 22, N. Y.