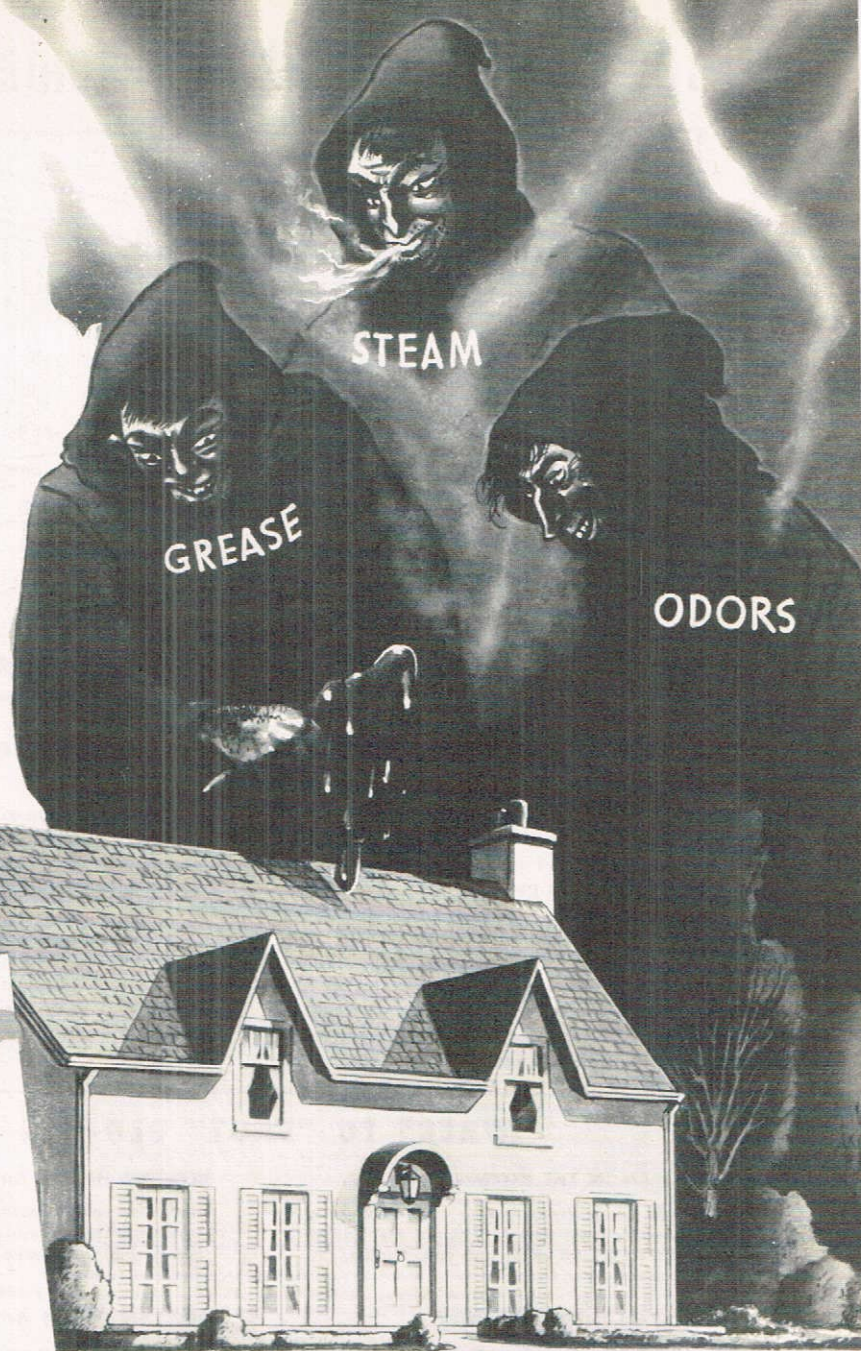


DON'T LET THEM RUIN **YOUR** NEW HOME



These three enemies of
interior decoration . . .

Grease Odors Steam

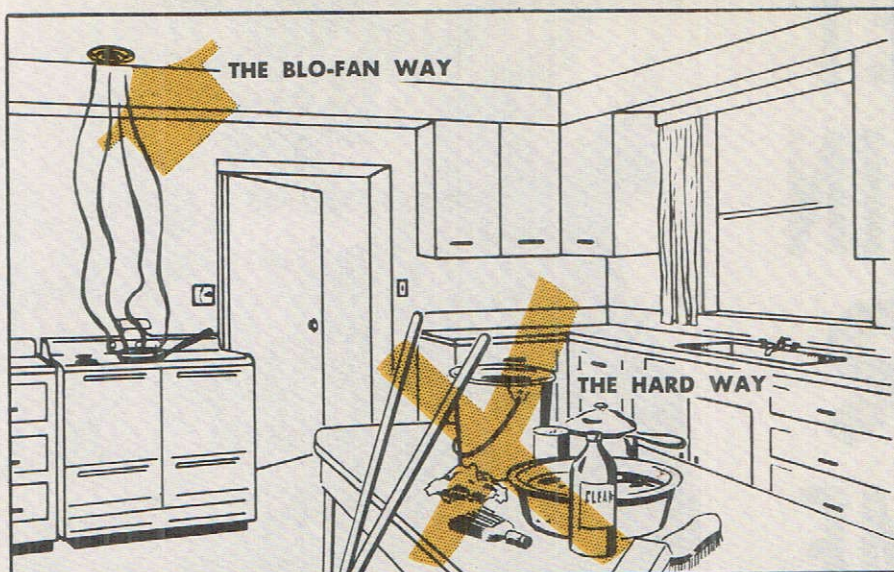
will launch their deadly attack
on your new home the day you
move in unless you stop them . . .

STOP THEM WITH **Blo-Fan**

ELECTRIC "SPOT" VENTILATOR
COMBINATION FAN AND BLOWER

STAY PROUD OF YOUR NEW HOME BY KEEPING IT FRESH — THE FOLLOWING PAGES TELL YOU HOW

You can keep that new home look...



the hard way

Back-breaking work, housemaid's knee, calloused hands—these are the rewards for keeping that new home look the hard way! Steam, grease and odors laugh at your efforts to win your own personal war against them. Then, of course, there is the expense of soap, detergents, mops, cleaning compounds and brushes. Savings on these items alone will pay for your Blo-Fan in a short time—to say nothing of cleanliness, extra leisure and more comfort... Add hours of pleasure to your day with Blo-Fan—it costs so little... saves so much.

the Blo-Fan way

A Blo-Fan "Spot" ventilator is installed directly over the point of air pollution, where a fan belongs. Thus, Blo-Fan helps nature whisk away steam, odors, and fumes as they rise, before they can spread. They don't have an opportunity to soil walls or ceiling.

Be sure your home ventilators are Blo-Fans—for twenty-five years Pryne and Company has been satisfying home owners by making superior ventilators designed particularly for domestic use—don't say "fan" say "Blo-Fan"... There is a difference!

WHERE TO "SPOT" BLO-FAN

BLO-FAN IN THE KITCHEN

Whisks away steam, greasy cooking vapors, and unpleasant odors... Keeps the housewife's workshop clean and comfortable.

BLO-FAN IN THE LAUNDRY

Assures springtime freshness in any weather—hot steam is expelled immediately... No need for a new hair-do after wash day chores are done.

BLO-FAN IN THE BATH

Eliminates embarrassment, steam-streaked walls, and fogged mirrors... It takes more than plumbing to make a bathroom.

BLO-FAN IN THE GAME ROOM

Means no more "morning-after" mustiness—no irritating liquor fumes and tobacco smoke... When used as a spare bedroom, it's like sleeping outdoors.

WHAT PEOPLE SAY...

DOCTOR—"Keeps contaminated air from spreading. It's good for your family's health, comfort and good humor."

ARCHITECT—"Installation directly over the point of air pollution is where a home ventilator belongs to move more air quickly, quietly, and more efficiently."

HOME ECONOMIST—"Cooking cabbage or frying fish and onions is a real problem unless you have a Blo-Fan."

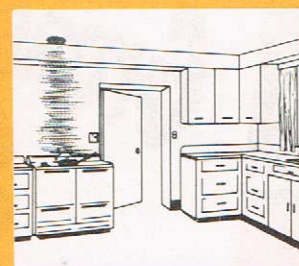
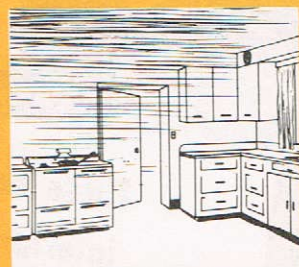
HOUSEWIFE—"With my Blo-Fan running I scarcely know the range is on—and my kitchen walls and woodwork stay so clean and dry."

INTERIOR DECORATOR—"The ideal ventilator should have a minimum opening and an attractive grill—you know, like Blo-Fan."

Blo-Fan Meets All These Requirements—and then some!

Here's how *Blo-Fan*^{*} does it!...

Don't be satisfied with
half-way measures...



* Trade Mark Reg.



Blo-Fan saves

ONLY *Blo-Fan* HAS THIS PATENTED BLADE

50%

Fan—75% of the air moved by a breeze fan is thrown from the blade tips. The center is so weak that when the air meets resistance it is merely sucked back into the center and recirculated. A fan delivers volume, but lacks power.

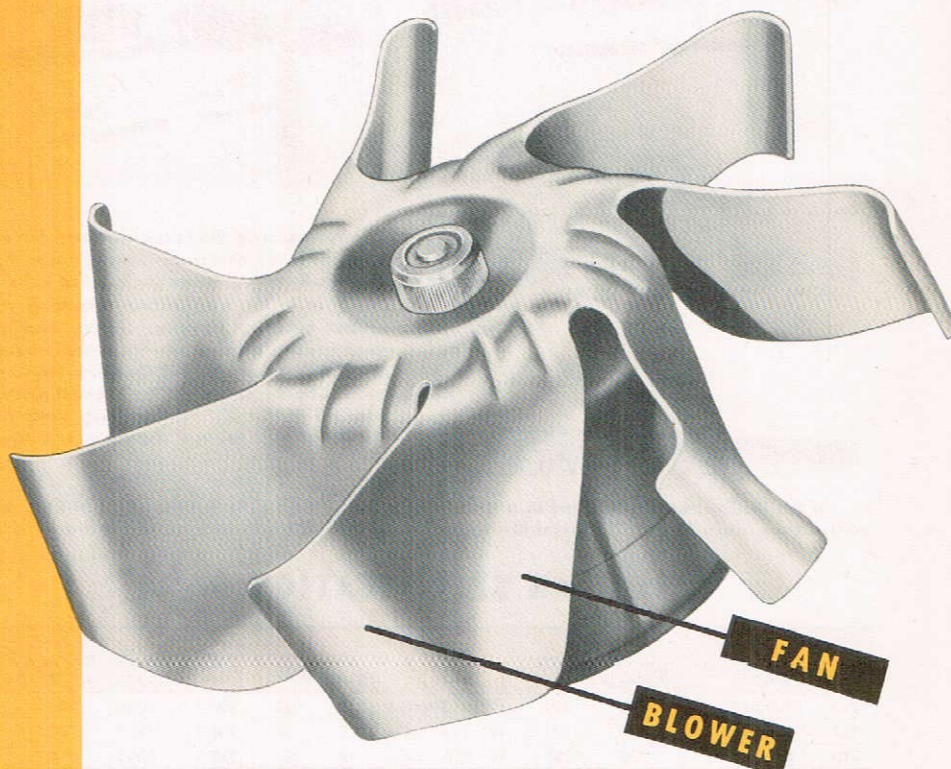
50%

A blower draws a smaller amount of air into the vortex, discharging it with greater power, thus overcoming resistance. A blower delivers air with power, but lacks volume.

100%

Blo-Fan combines the volume of a breeze fan with the power of a blower. The fan portion of the blade feeds air to the blower portion, thereby discharging more air faster.

The unusual design of this blade is the secret of Blo-Fan superiority. It's easy to see how the fan portion scoops up air and the blower portion expels it with great force. No other ventilator has this blade!



This is what happens in a kitchen where the fan is not directly over the range:

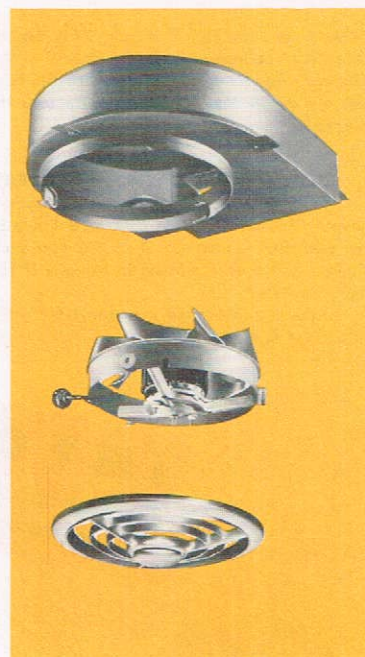
1. Greasy cooking steam and odors rise until they strike the ceiling and spread. 2. They must literally be dragged across the ceiling to the fan. 3. They are caught in cross drafts and carried into other rooms. 4. If a fan is placed in an outside wall and an adjoining window or door is left open, most of the discharged air will come directly from the door or window, thus leaving most of the room unaffected.

This is what happens in a kitchen which has a Blo-Fan "Spot" Ventilator:

1. Blo-Fan removes foul air where nature is trying to get it out—over the source. 2. Blo-Fan acts as a "booster" to natural ventilation, helping nature remove polluted air. 3. Blo-Fan keeps greasy cooking steam from striking the ceiling or settling on walls and furnishings. Practically eliminates spread of odors through the home. 4. Blo-Fan insures cleanliness—provides maximum protection to health and comfort.

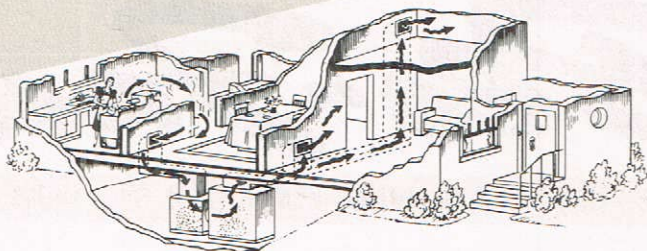
BLO-FAN IS EASY TO CLEAN

Grill and motor assembly may be easily removed for cleaning by merely unscrewing the large center cap—no tools required. Motor is fully enclosed for long life, rubber-mounted for quietness, cooled by the air stream, and is radio-interference proof. Entire unit fits flush with the finished ceiling or wall; only the attractive grill is visible.



WINTER OR SUMMER

If your home is heated by forced air, the ventilation problem in winter will be aggravated, because unwanted air that escapes from kitchen, bath, game room or laundry will be vigorously circulated through the entire house! Blo-Fan prevents this! If your home is air-conditioned, the summer ventilation problem will be even worse, for with doors and windows tightly sealed, there is no escape for polluted air. Blo-Fan skims it off!



housework! Keeps that new home look...

WALL OR CEILING

It's all the same to

Blo-Fan



The versatile Blo-Fan is designed for easy installation in the best spots—directly above the point of air pollution... It can be installed either in the ceiling or in the wall without sacrificing valuable cabinet space... However, ceiling installation is recommended because Blo-Fan is well above head height where it catches ALL the odors, steam, grease, and smoke. Requires only 3 1/2" behind plaster; uses standard 3 1/4" x 10" furnace duct. Ducts are discharged through the roof, the eaves, or outside wall.

If the Blo-Fan must be installed in a soffit (installation in the ceiling in front of the soffit is more directly above range burners), a special Blo-Fan Model, number 230, may be used in a restricted 12" area.

BLO-FAN SPECIFICATION DATA

Model	CFM Actual Discharge	Approx. Free Air	Size	Speeds	Watts	With Elbow	With Wall Cap	With Eave Cap	With Light Add
206 "Junior"	175	400	11 1/2 x 13 3/4 x 4 1/4	1	38	206-1	206-2	206-3	---
208 "Standard"	300	700	14 x 16 x 4 1/4	1	58	208-1	208-2	208-3	-408
210 "DeLuxe"	500	1200	14 x 16 x 4 1/4	9	136	210-1	210-2	210-3	-410

DON'T BE MISLED! The only CFM figures which mean anything are for ACTUAL discharge. So-called "Free Air" ratings of fans are often 2 or 3 times greater than actual discharge through the ventilator. The "Actual" figures above show what Blo-Fan takes out of the room through 10' of duct and a wall cap. (Merely divide the "Actual" figure into the cubic content of the room to ascertain the air change per minute.)

HOW TO ORDER YOUR BLO-FAN

Your architect or builder will specify the correct Blo-Fan by name and model number for the electrical contractor. Just tell him you want Blo-Fan and that it is listed in Sweet's 1950 Catalog—File 29b-7.

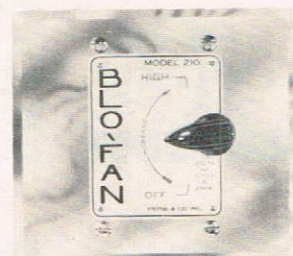
Ask your electrical contractor to install Blo-Fan, there is no substitute.

For further information and the names of your nearby distributors just mail the handy self-addressed reply card.

GUARANTEE

The Blo-Fan is fully guaranteed against electrical and mechanical defects for a 5-year period, on a pro-rata basis. Blo-Fan is trouble-free!

ANOTHER
Blo-Fan
EXCLUSIVE



9 SPEEDS FORWARD

This nine-position control switch, which is standard equipment on the Blo-Fan Model 210, allows the housewife to regulate the rate of ventilation in her home as easily as she controls the speed of her automobile.



FAN AND RECESSED LIGHT

The perfect combination. Extremely popular because it provides a Pry-Lite recessed light in conjunction with the Blo-Fan "Spot" ventilator. 100-watt lamp gives ample illumination for kitchen range.

DISCHARGE FITTINGS

The duct from your Blo-Fan normally will discharge through a side wall, through the roof or through an eave, depending on the type of building construction. Fittings are available for all of these conditions.



ELBOW—Used for 90 degree turn of duct up from ceiling. Contains baffle to keep air from piling up at turn.



WALL CAP—Automatic louvers prevent cold or headwinds from backing up into duct.



EAVE CAP—For use where discharge is desired through eaves. Also has automatic louver similar to wall cap.

IMPORTANT
Insist on this trade mark when you
get your home ventilators.

Blo-Fan *

THE MOST COPIED HOME VENTILATOR IN AMERICA



PRYNE & CO., INC. Pomona, California

Factories: Pomona, California; Newark, New Jersey

Warehouses: Los Angeles, San Francisco, Chicago, Atlanta

Stocked by more than 600 wholesalers in 350 cities in all parts of the United States and Canada.

* Trade Mark Reg.