

CLICK ANYWHERE ON THIS PAGE TO RETURN TO
KIT HOMES INFORMATION at InspectApedia.com

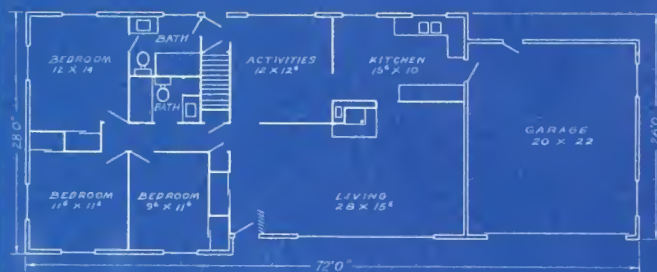
The Luxury Line

modern
homes



CORPORATION
DEARBORN, MICHIGAN

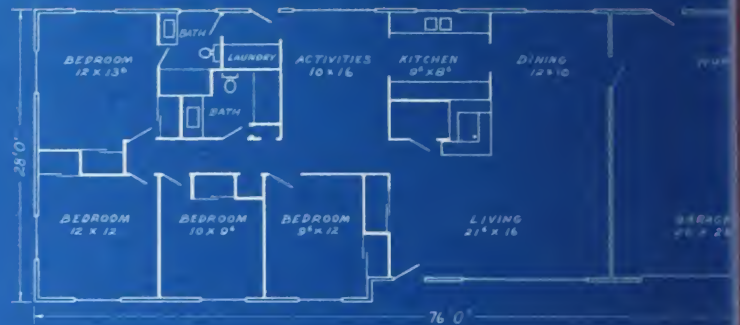
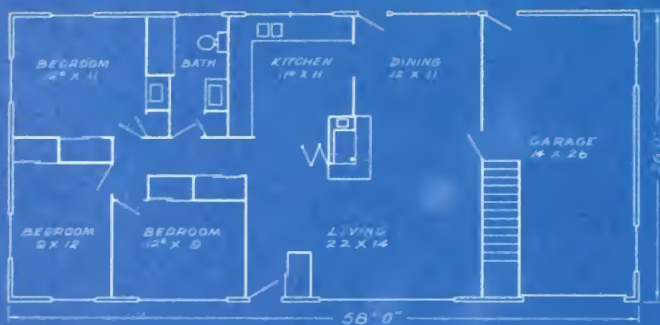
Luxury you'd never expect in any home is yours in these smart, contemporary Moderns—especially with their dramatic optional features! Imagine windows that open or close at the touch of a switch—even from your bed. *Complete* sound-conditioning, with acoustical tile in every room! And the very finest and newest in building materials and equipment; vaulted studio ceilings; Thermopane windows; low-slung, open styling that only a professional design staff could develop; precision workmanship that only Modern methods can achieve. For the family with a flair for quality living, these homes are the end of a long search; the beginning of a new, exciting way of life!



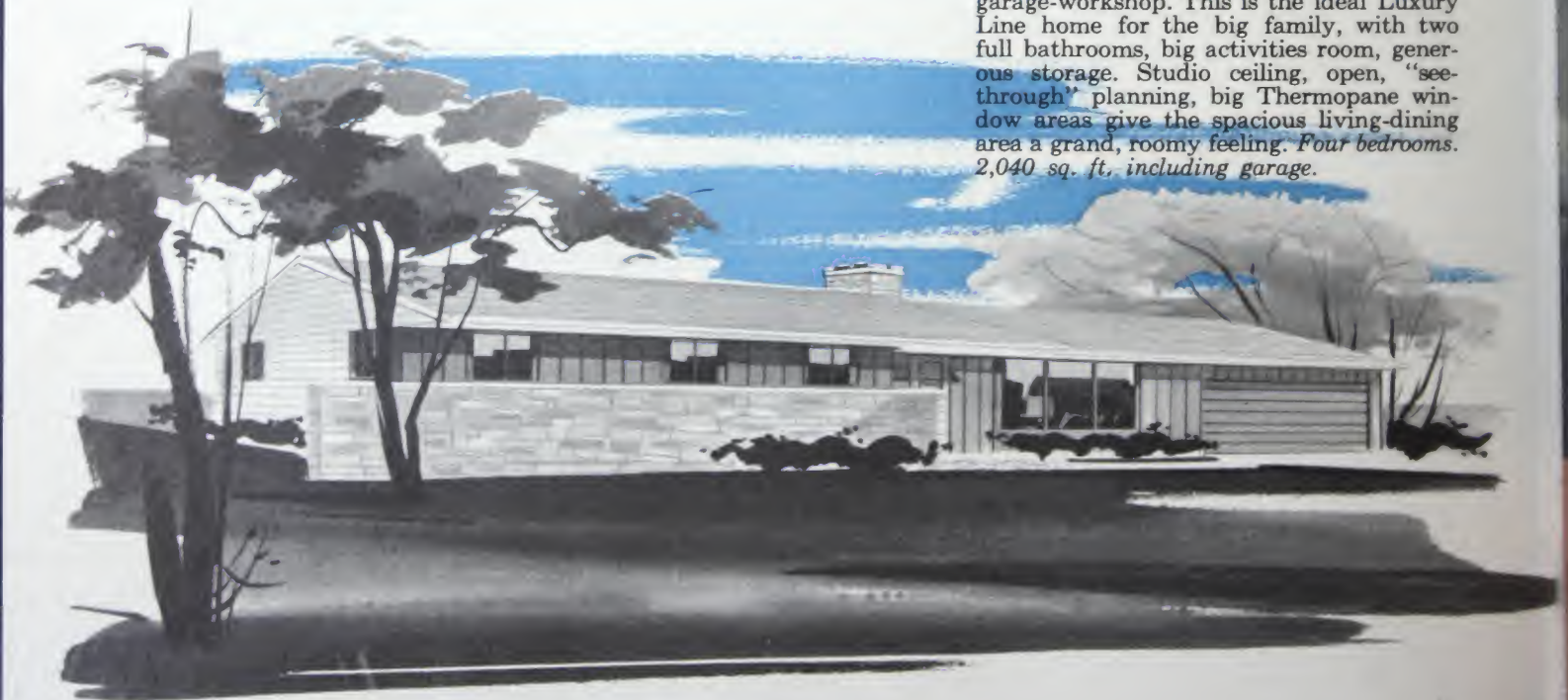
THE "FAIRLANE"—shown with 2-car garage and basement. *Truly* a luxury home—with two bathrooms, big activities room, two big picture windows (look at the size of the front one), and natural fireplace with smart corner styling. Tremendous living room, big kitchen, too. *Three big bedrooms. 1,840 sq. ft. including garage.*



THE "CAPRI"—shown with basement and garage. Imagine this *very* open plan, with vaulted studio ceiling in acoustical tile! Fireplace has corner styling. Note picture window; dining area also has giant Thermopane picture window. Power windows are optional on all these Luxury Line homes. *Three bedrooms. 1,508 sq. ft. including garage.*

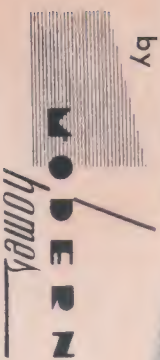


THE "BRENTWOOD" — shown with 2-car garage-workshop. This is the ideal Luxury Line home for the big family, with two full bathrooms, big activities room, generous storage. Studio ceiling, open, "see-through" planning, big Thermopane window areas give the spacious living-dining area a grand, roomy feeling. *Four bedrooms. 2,040 sq. ft. including garage.*



THE *Capri*

by



A Contemporary Family Home for Gracious Uncrowded Living

Just take another look at the stunning custom styled Capri. It's one of the most beautiful homes that has ever come off an architect's board. The Capri is so unusually beautiful that you'll love to look at it, you'll be thrilled to own it, you'll be proud every time you or your friends walk up to that handsome front door.

And inside that front door you'll find many happy surprises. First and most important, you'll find a well-planned, family type home, designed specifically to meet the requirements of modern living. You'll also find the Capri is roomy and convenient—truly a lovely home with a distinctive and charming character.

You'll be interested, too, in the fact that the CAPRI costs about 20% less than comparable homes because of our volume buying of nationally famous materials and because our system of factory assembled units eliminates waste.



A wonderful "island" fireplace fills the living and dining areas with old-fashioned warmth and cheer.



THE CUSTOM STYLED

Capri

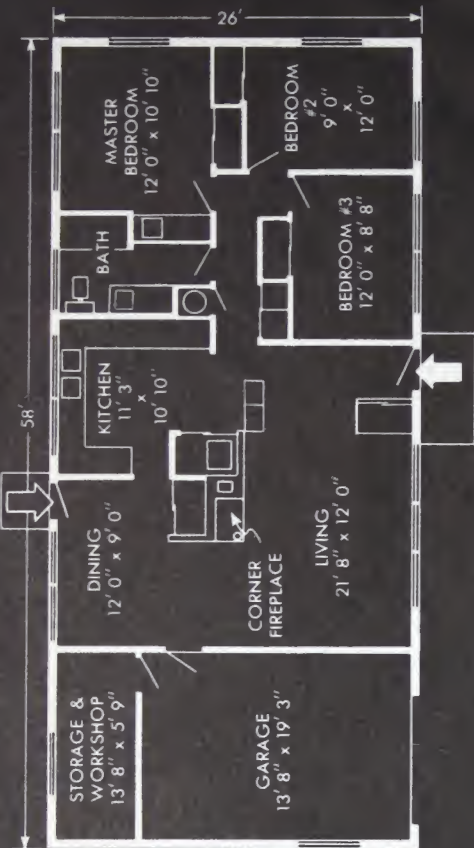
by

*
MODERN
homes

Convenient kitchen with Youngstown cabinets, double sink, garbage disposer and exhaust fan.



The master bedroom AND bath each have a beautiful, built-in, alcove vanity with inset lavatory.



A Lovely Home For Happy Everyday Living and Built With Old-Fashioned Quality Throughout

High-style contemporary design, with long, low, sweeping lines.

Spacious Thermopane window-walls front and rear with indirect ventilation below.

Three roomy bedrooms that all take twin beds.

Beautiful room-size studio wall of textured Wedgewood.

Modern storage-wall units which you can move to change the shape and size of your rooms.

Modern low-pitched roof with deep canopy for shelter and shade.

Attached garage with large built-in storage and workshop area.

Wonderful "island" fireplace that fills both the living and dining areas with warmth and cheer.

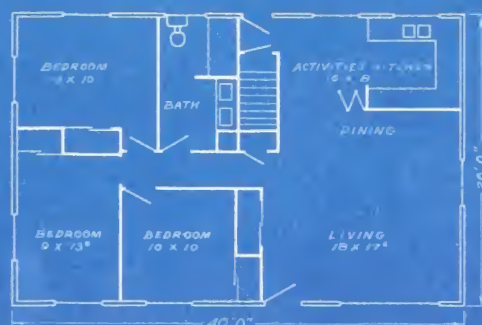
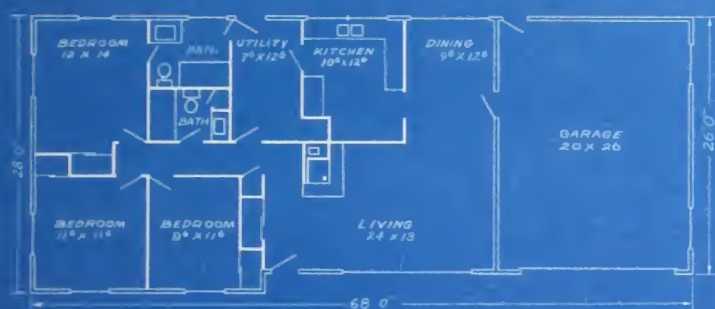
Convenient self-storing aluminum storms and screens.

Custom quality "Modernline" trim throughout.

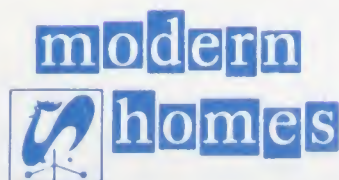
*

MODERN HOMES CORP., Dearborn, Michigan, and Port Jervis, New York, manufactures a complete line of custom styled 2, 3 and 4 bedroom homes. Ask your local builder for additional information including prices.

THE "MANOR"—shown with 2-car garage, smart Scotch-hip roof. Features two full bathrooms, modern corner fireplace, big kitchen with Modern's warm birch cabinets. Wide, sheltering roof overhang is typical of Modern Homes styling. All luxury options are available on this home. *Three bedrooms. 1,816 sq. ft. including garage.*



THE "COURTLY"—shown with basement. Notice the long, low look achieved by extending the brick facing beyond end of house in a bold, horizontal stroke! With studio ceiling, the COURTLY has an unbelievably open feeling. Bath and bedrooms are roomy. *Three bedrooms. 1,040 sq. ft.*



THE LUXURY LINE "WINDSOR"—shown with garage, and special garage-storage room. Features combination bath and laundry, plus half-bath off the master bedroom. Louvered trellis over entry "light-conditions" the big living area, adds to the feeling of length and lowness. Three bedrooms. 1,376 sq. ft. including garage.



THE LUXURY LINE of Modern Homes is built exclusively by franchised dealers of well-established reputation and integrity. Materials, equipment and accessories are supplied by sources of outstanding quality. In every respect, you can be confident of the greatest value and the safest investment when you become the owner of a smart, new Modern Home.

MH-101 - 12-1-54 - 150M

*Here are
the homes
you've been
hunting for!*

**modern
homes**

PLANTS

Warborn, Michigan

Port Jervis, New York