



A HELPFUL CATALOG OF
Frigidaire Products
FOR THE HOME



For more room! more conveniences! more value!

the beautiful new

Frigidaire Refrigerators

3 types • 4 great new series • many models to choose from!



Frigidaire Imperial models

The world's finest refrigerator. Combines the advantages of a Food Freezer and a spacious, super-cooled refrigerator. You can freeze and store for months up to 70 lbs. of your favorite frozen foods in the giant "Locker-Top". The food compartment provides new Refrig-o-plate cooling. Interior is trimmed in beautiful "Ice-Blue". Other features include sliding Basket-Drawer, rustproof aluminum shelves, adjustable sliding shelf, two Multi-Purpose Trays, and extra-deep twin Hydrators. 8 and 10 cubic foot models.

Frigidaire De Luxe models

Here's brilliant new styling by Raymond Loewy — new super-storage cabinet design — and 3 special cold zones for keeping every kind of food. Large full-width Super-Freezer Chest holds up to 49 lbs. of frozen foods. Special chilling coils in the walls of the food compartment assure uniform, safe cold. Full-width Chill Drawer, sliding Basket-Drawer, Porcelain Multi-Purpose Tray, adjustable sliding shelf, rustproof aluminum shelves, and extra-deep twin Hydrators for fresh fruits and vegetables. "Ice Blue" Interior trim. 9 and 10.7 cubic foot models.

Every Frigidaire Refrigerator gives you all these features...

Safe cold from top to bottom
Lifetime Porcelain Food Compartment
Generous freezer capacity
More shelf space — More Space between shelves
Double-Easy Quickcube Ice Trays

More tall bottle space
Adjustable Cold-Control
More moist-cold vegetable and fruit storage space
New food compartment flexibility
New finger-tip action Target door latch

One-piece all-steel cabinet
Choice of Porcelain or Dulux finish in most models
5-Year Protection Plan
Powered by the world-famous Meter-Miser Mechanism

All models available with door hinges at right or left side. See last page for dimensions.

Frigidaire Master models

For the greatest amount of food-storage space at the greatest dollar value. Several models have new super-storage design with full-length door. You'll want to see these new features: adjustable aluminum shelves, large frozen food capacity, Multi-Purpose Tray, roomy Meat Storage Drawer, new twin Hydrators, and many more. 7.6, 9.2, 11 cubic foot sizes. Also available is a new 7.4 cubic foot Master Model with full-width Super-Freezer Chest.



Frigidaire Standard models

The wonderful space-making refrigerator for smaller kitchens where refrigerator room is limited. A smooth-looking, compact cabinet on the outside and a spacious food storage compartment inside. There's plenty of Super-Freezer capacity for your frozen foods and Quickube Ice Trays; a handy Cold-Storage Tray; large, covered Hydrator and many more special features for your food-keeping convenience. 6 and 7.6 cubic foot models.

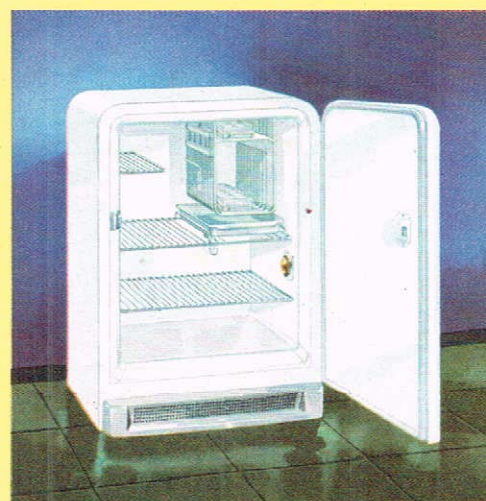


Super-Capacity Model for Large Families!

A beautiful two-door refrigerator designed especially for larger families. The roomy interior provides dependable cold from top to bottom. Powered by the economical Frigidaire Meter-Miser. Ask for Model ML-171. Capacity, 17.1 cubic feet.

New Apartment Model

This compact model is ideal for kitchenettes, trailer homes, or small kitchens. Also available with special auxiliary flat top designed for under-sink installations. 4 cu. ft. capacity. A 6 cubic foot model also available.



These are only a few of the many new Frigidaire Refrigerators. Ask your Frigidaire Dealer for information.

Brilliant new

Frigidaire Electric Ranges

for small or spacious kitchens!



The new Frigidaire *Thrifty 30"*

Here, at an amazing low price, is a marvelous new compact electric range — it's only 30 inches wide, a perfect size for smaller kitchens. This new Frigidaire Thrifty-30 takes up less space yet offers big range capacity. There are four new Radiantube Units for real cooking-top convenience — there's a big new thrifty oven, too — the biggest oven in any household range, with room aplenty for extra pies and cakes and roasts.

Here is a completely new idea in electric ranges, stunningly styled by Raymond Loewy to add matchless beauty to any kitchen, large or small, and finished in lasting Lifetime Porcelain. Cook-Master on model RM-35 shown above combines in one unit the controls for automatic oven cooking, a cooking-top lamp, and a convenient kitchen clock. Big, full-width storage drawer holds lots of cooking utensils. Also available as Model RM-30 without these features and at slightly lower cost.



Beautiful new Frigidaire *De Luxe* **electric ranges**

The new Frigidaire De Luxe Electric Ranges are the finest anywhere — finest by far with the smart beauty of the new higher back panel, the one-piece flowing-top. And their features are the finest, too. There's the Cook-Master Oven Clock Control for completely automatic cooking, the Triple-Duty Thermizer Cooker, New Radiantube Cooking Units, roomy Even-Heat Oven for the best broiling, baking, and roasting results ever, and a host of other time-saving features.

There are several De Luxe models. Model RM-75 has two complete ovens and two complete broilers, plus all the finest de luxe features. Model RM-65 has the same convenience features with a handy Warmer Drawer in place of the extra oven. They're finished inside and out in beautiful Frigidaire Lifetime Porcelain, with special acid-resisting porcelain cooking top.

Compact Frigidaire

Apartment Ranges

There are even more Frigidaire Electric Range models to choose from. Model RK-3 shown at left is specially designed to fit small spaces, such as compact apartment kitchens. Another model, RK-4, with four Radian-tube Surface Units is also available. Both have full-size Frigidaire Even-Heat Ovens. They're finished throughout in Frigidaire Lifetime Porcelain, with acid-resisting cooking top.

A Frigidaire Electric Range is an investment in unmatched cooking convenience and dependability, for it is America's finest electric range. Remember, you can't match Frigidaire — anywhere.

When building

Be sure to specify proper wiring for the modern electric range when building a new home. It costs less to do so ahead of time.



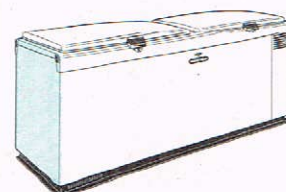
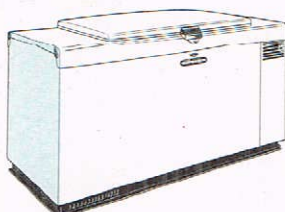
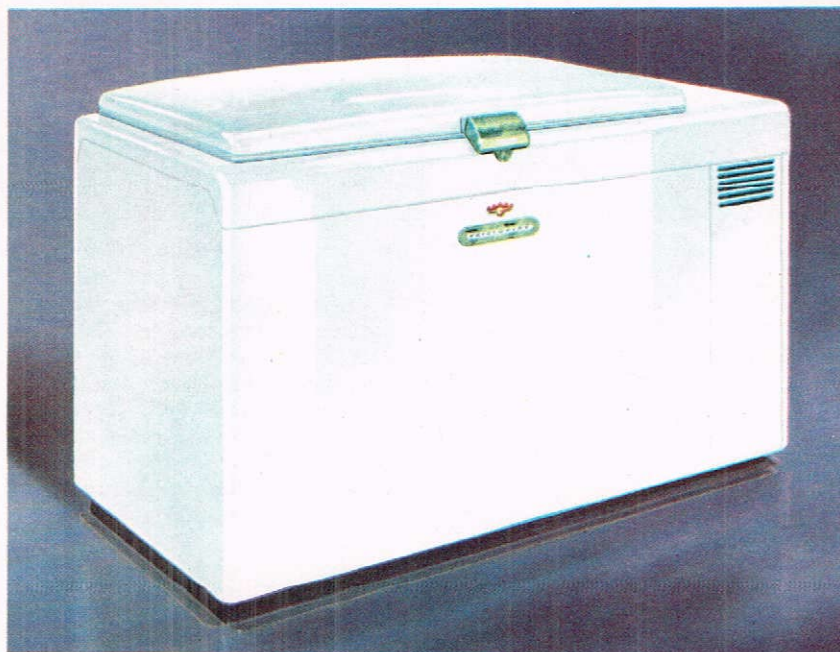
Frigidaire

Food Freezers

A size for Every Family—Every Home

Here they are — three wonderful new models of Frigidaire Food Freezers. And every one offers more features than ever before—quality features, designed for more convenience and pleasure, greater dependability. All of the new Frigidaire Freezers are powered by the world-famous Meter-Miser—the same economical, dependable unit that powers millions of Frigidaire Refrigerators. In addition, there's new Raymond Loewy styling, counter-balanced top with built-in Interior Light and heavily insulated cabinet, and lots of other features. The new Lock-Type Latch is ideal for homes with children or where freezer will be installed in basement. You'll want to see all of these beautiful new Freezers and choose the model best suited to your needs.

Frigidaire Food Freezers range in capacities from 8.8 to 18 cubic feet. Model HM-88, shown above, has room for 308 pounds of frozen foods. For larger families, the new HM-117 shown at right has 11.7 cubic feet of storage area—space for 409 pounds of food. Model HM-180, lower right, has a full 18 cubic feet of storage space—ideal for really large families and farm homes. Holds 630 pounds of frozen foods.



Plan for carefree washdays with new

Frigidaire Home Laundry Equipment

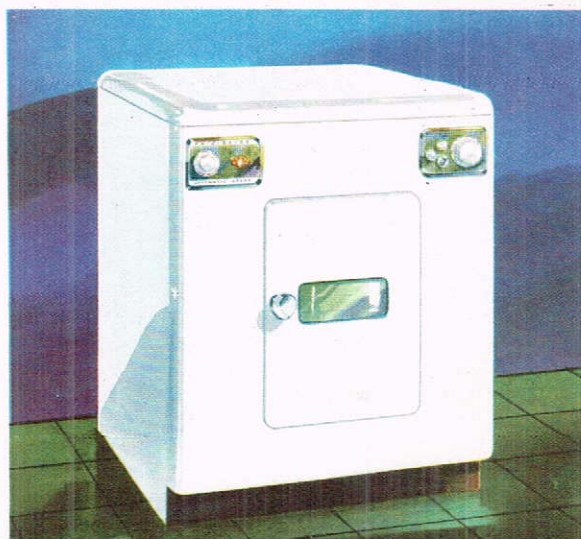


The ALL-PORCELAIN

Frigidaire Automatic Washer

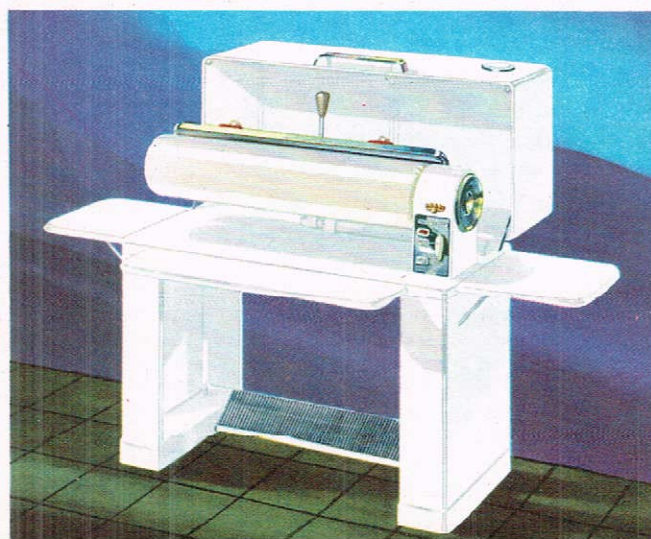
For completely automatic washing — set the dial just once. The Frigidaire Automatic Washer with Live-Water Action washes clothes cleaner, rinses them brighter, then spins them drier — pounds lighter with Rapidry Spin. It gets work clothes clean, yet it's gentle with fine fabrics. All you do is put in clothes and soap, set the amazing Select-O-Dial — and forget it. It's completely automatic, yet it's flexible — you can change or regulate its operation easily. You can select in advance any washing time from 2 to 10 minutes, and still have a completely automatic cycle. It's the only all-porcelain automatic washer, too, finished throughout in Frigidaire Lifetime Porcelain. The Frigidaire Automatic Washer can be installed anywhere — laundry room, kitchen, or basement, for it does not require bolting down or rigid pipe connections — installed with heavy duty flexible hose.

For the final steps to carefree washdays, choose the new Frigidaire Electric Dryer and the Frigidaire Ironer — the finest for the modern home laundry. Clothes may be tossed into the Frigidaire Dryer just as they come from the washer, the proper heat and time selected, and work is practically finished. The new Ozone Lamp gives you "sunshine drying" right in the kitchen or laundry. Clothes come out fresh and sweet smelling, either bone-dry for storing, or just damp **Frigidaire Automatic Electric Dryer**



enough for ironing, however desired. And with the Frigidaire Electric Ironer, ironing, too, is much easier. Ironing is done while seated comfortably in a chair — there's no lifting or pushing a heavy iron. Frigidaire Prestoe-Matic Foot Control does away with hard-to-reach hand and knee levers. Adjustable casters allow change of height to suit individual users. The Frigidaire Ironer actually cuts ironing time in half, and you'll iron an entire washing after just a little practice.

Frigidaire Electric Ironer



Frigidaire

Kitchen Cabinets and Sinks

...a brighter, more efficient kitchen to make your meal-planning a pleasure

Whether it's a small, cozy kitchen or a large, roomy one — you can easily give it a bright new look, add more useful storage space and time-saving efficiency to daily meal planning. Choose from a complete line of perfectly matched, snowy white, all-steel cabinets. Plan the entire kitchen to suit the family's needs, then have cabinets installed all at one time or in convenient "work centers". Wall cabinets have fully enclosed, dust-proof construction. New base cabinets feature exclusive Vitalast work surface bonded to steel for long life. Single and double-bowl sinks have Lifetime Porcelain tops. All doors are spring-hinged — stay fully open or firmly closed . . . and they're built to "deadend" sound.

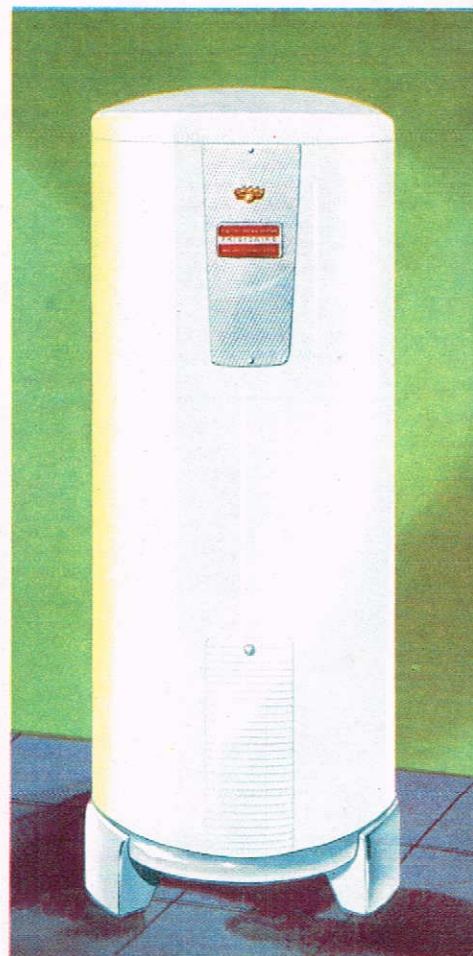


Frigidaire Electric Water Heaters

7 models — 30 to 80 gallon sizes for every family requirement

provide clean, fast, automatic hot water

- ✓ Completely automatic. Always plenty of hot water when you want it.
- ✓ Perfectly safe. No open flame or fumes. Tank is always cool outside.
- ✓ Controlled temperature. No overheating, thermostats keep water just right.
- ✓ May be located anywhere. No special flue or vent required.
- ✓ Always clean. No fuel, no soot, no smoke.
- ✓ Economical. Uses current only part-time. Heating units right in water.
- ✓ Highly efficient. Extra-thick insulation entirely surrounds tank, holds heat inside.
- ✓ Exclusive Radiantube Units heat fast by direct contact in water. Flex off scale automatically to maintain maximum efficiency.
- ✓ Special baffle prevents incoming cold water from mixing with heated water.
- ✓ 7 models—30 to 80 gallons. 30 and 40 gallon Table-Top models available with Vitalast work surface or porcelain top.



All models available with tank-saving magnesium rod for corrosive water areas. Also available with high limit switch

Sensational

Frigidaire Dehumidifier...

**protects against
moisture damage!**



The completely automatic electrical appliance that protects against rust, corrosion, mold and mildew, sweating walls and dripping pipes. For use in basements, recreation rooms, storage rooms, work rooms, or any closed area up to 8,000 cubic feet. Does not use chemicals or heaters of any kind. Can be used with complete safety in any room and may be easily moved from one location to another. Installation requires only a convenient electrical outlet. Very valuable for drying freshly plastered or painted areas quickly. Ask for free 5-day trial demonstration without obligation!

**For cool comfort in your favorite room
wonderful new**

Frigidaire Window-Type Room Conditioners



These handsome new comfort Conditioners will make life in the home a real pleasure summer after summer for years to come. They cool the air quickly and comfortably — dehumidify the air to remove excess moisture — filter out dust, dirt, and pollen — circulate clean refreshing air throughout the entire room — bring in fresh outside air — and exhaust smoke and room odors to the outside. They're powered by world-famous Meter-Miser refrigerating units. Two sizes are available. Also available are "package" units and "central" systems to cool an entire house or several rooms.

• Exterior dimensions of Frigidaire products

REFRIGERATORS				
	Height	Width	Depth*	Depth* (Door open 90°)
Master and DeLuxe models—11.0 and 10.7 cu. ft.	62 1/4	33 3/8	27 3/8	56 1/2
Master and DeLuxe models—9.2 and 9.0 cu. ft.	57 1/8	31 1/8	27 3/8	54 3/8
Master and Standard models—7.6 cu. ft.	57 1/8	31 1/8	26 3/8	53 3/8
Standard model—6.0 cu. ft.	51 3/8	24 3/8	26 3/8	46 3/8
Master model—17.1 cu. ft.	67 3/8	38 3/8	35 1/8	49 1/2
Imperial model—10.0 cu. ft.	65 3/8	34 3/8	29 3/8	58 3/8
Imperial model—8.0 cu. ft.	62 1/4	33 3/8	28 1/4	56 1/2
*Including hardware and ventilating space in rear.				
ELECTRIC RANGES				
	Maximum Height at back	Height (To cooking top)	Width	Depth
DeLuxe models—40" width	48 1/2	36	40	26 5/8
"Thrifty-30" models	43 and 48 1/2	36	30	27 3/8
Apartment Models	42	36	21	27
LAUNDRY EQUIPMENT				
	Height†	Height (Top open)	Width	Depth*
Automatic Washer	37 1/16	53 13/16	25	26 1/4
Electric Clothes Dryer	36 3/8		31	26 1/8
Electric Ironer (closed)	35		36 5/8	17 1/2
†Height to back panel 42 1/16. *Installed depth 26 3/4.				
FOOD FREEZERS				
	Height	Height (Top open)	Length	Depth*
8.8 cubic feet	35 3/8	60	54 3/4	27
11.7 cubic feet	35 3/8	60	67 1/4	27
18.0 cubic feet	35 3/8	60	92 1/4	27
*Plus 2 1/2 for latch.				
ELECTRIC WATER HEATERS				
	Height	Width (At top)	Width (At base)	Depth Height (At back)
Round-Upright Type				
32 gallon	57 3/8	20 1/2	21 3/4	
40 gallon	57 3/8	22 1/2	23 3/4	
52 gallon	57 3/8	24 1/2	25 3/4	
64 gallon	57 3/8	26 1/2	27 3/4	
80 gallon	71 3/8	26 1/2	27 3/4	
Table-Top Type				
30 and 40 gallon models	36	24	24	25 3/4 40

Note: All dimensions are given in inches. See your Frigidaire Dealer for complete specifications.

IMPORTANT: Frigidaire Division of General Motors Corporation reserves the right to make changes at any time, without notice, in prices, materials, equipment, specifications and models, and also to discontinue models.