



★
Fir-Tex ★

Insulating Boards



INTERIOR FINISH • INSULATING PLASTER BASE LATH • SHEATHING • ACOUSTICAL TILE • ROOF AND REFRIGERATION INSULATION



What is insulation?

★ Insulation is any material which retards the passage of heat and cold or which absorbs sound. The principles of insulation are as old as Adam and may be seen in infinite variety throughout Nature's wonderland. Insulation is the thick coat of fur on the Polar bear, the feathers on the duck's back, the snow on the Eskimo's igloo and the blanket of snow which keeps the tender seedling warm while inches away the air is icy. Insulation is the grass hut of the Hottentot, the thick blanket of the desert tribesman. Wherever heat must be kept *out* or where it must be kept *in* will be found insulation of one sort or another, and if looked at closely, each one employs the same fundamental principle—the imprisonment of myriads of dead air cells confined by the fur, the feathers, the snowflake, the grass in the hut and the wool in the blanket that does the job that needs to be done.

What is Fir-TEX?

★ Fir-TEX is insulation, to be sure. But Fir-TEX is also a building material, a structural sheathing, a rigid insulating base for plaster, a highly decorative interior finish.

Fir-TEX uses tough wood fibers to imprison its myriads of inert air cells within a building board and then produces that building board in a variety of sizes, shapes, thicknesses, densities, textures, yes, and *colors*. Each of these kinds of Fir-TEX was especially designed to do a certain job and also to *insulate* at the same time.

FIR-TEX Lath provides the finest base for plaster—and it insulates.

FIR-TEX Sheathing gives walls and roof areas many times the bracing strength of ordinary wood sheathing—and it insulates.

FIR-TEX Colorkote panels make beautiful livable rooms—and they insulate.

There are many reasons why it is to your advantage to include sturdy Fir-TEX Insulating Boards among your building materials when you build or remodel:

1 Greater strength. The use of Fir-TEX actually adds to the strength of the entire structure.

2 Once in place, always in place. Fir-TEX is an integral part of the home. In case of alteration or repairs when opening is made in ceilings and sidewalls, there is no trickle of Fir-TEX because Fir-TEX is a building *board*.

3 Fir-TEX does not creep or settle. Fir-TEX is nailed solidly to framing members and is a permanent part of the building, and remains where put. Vibrations caused by trucks and street cars, etc., have no settling effect on Fir-TEX insulation board.

4 Fir-TEX provides an unbroken area of uniform insulation continuity. This is particularly true when Fir-TEX is used as a

plaster base as the mechanic necessarily must insulate from floor to ceiling and from eave to eave.

5 Fir-TEX takes the place of some other building material and provides both insulation and building material at the cost of insulation alone.

6 Fir-TEX saves fuel bills by reducing loss of furnace heat through walls and roof.

7 A properly Fir-TEXed house can be adequately heated with a smaller and less expensive heating plant than an uninsulated or poorly insulated dwelling.

8 Fir-TEX products are available in a wide range of standard sizes and thicknesses to meet the requirements of any insulating problem. See pages 26 and 27.



SKY ROOM — by *Fir-Tex*

The "down-to-earth" solution to your extra room problem



★ Is there space in your home—for example, a dingy attic now used only as a "catch-all?"

Why not convert such space into a bright, comfortable extra room. Let your Lumber Dealer explain how you can use Fir-Tex color panels with a minimum of lumber and other building materials.

The five available colors permit you to use your own ingenuity in creating an original design and color scheme. For example, in the Sky Room above the stars and world map are hand painted on Fir-Tex Blukote panels.



A *Fir-Texted* Room of their own

★ Just yesterday this household was cramped for space. Growing children shrink the four walls of the home faster than one realizes. This basement had always been there but until Fir-Tex transformed it into this colorful, enjoyable room, it had been a typical cob-webby, dingy, catch-all for castoffs. Now that the room is finished for the children it is the envy of all their playmates.

All Fir-Tex Insulating Board Products are made from sound clean wood chips converted into tough, natural wood fibers that are thoroughly sterilized and felted into sturdy boards with marvelous insulating qualities. Fir-Tex Insulating Board Products are: Ivrykote and Colorkote color panels, Ceiling Tile, Acoustical Tile, Exterior Sheathing, Plaster Base Lath, Roof Insulation and Refrigeration Blocks.



This is the complete basement room, a portion of which is illustrated on the opposite page.

**Unusual effects are easily obtained
with *Fir-Tex* colorkote panels**

★ This exceptionally interesting basement room started with the selection of Fir-Tex Blukote panels. This color suggested the sea as a theme motif for the room. It was very easy to paint seagulls, porpoises, ocean waves or other designs on the Fir-Tex, as it is presized for decorating if desired. Similar effects can be obtained with stencils or transfers.

For the walls, Blukote large sheet building boards were used. The ceiling was constructed with 16"x16" tile, light in color to obtain the best light reflection. Thus Fir-Tex decorates and insulates against heat, cold and noise. It insulates and beautifies at the cost of insulation alone.

The wide range of sizes, shapes, patterns and colors in which Fir-Tex can be obtained permits the builder to give free rein to his imagination.





Let *Fir-TEX* turn a dingy basement into an attractive rumpus room!

★ There's nothing like a rumpus room to attract fun and friends. Such a place also has a knack of keeping young people at home. Whether you are building a new house or making over an old one, a recreation room is a wise investment. One way to get a stunning, colorful room at moderate cost is to use Fir-TEX, the double duty building board. The room above, with walls of Wheatkote panels and ceiling

of Ivrykote of tile, is an example. Another important advantage of using Fir-TEX is that it helps keep noise from traveling through the house. Let Johnny have his saxophone and practice in the basement. Let the children romp and shout—Fir-TEX will absorb most of the noise. And when you and your guests take over the game room, you can be as hilarious as you please. You all can have more fun.

A FIR-TEXED ROOM GIVES YOU MORE LIVING SPACE WITHIN YOUR PRESENT HOME

Add a room

with *Fir-Tex* insulating color panels

★ If a growing family has made your home shrink in size . . . if conditions make a new home impossible—add an extra room *within* your present home.

A rumpus room in the basement will afford fun at home. Games in such a room as below will make everyone *want* to stay home. There's no need to wear

out precious tires or burn scarce gasoline by going elsewhere for family enjoyment.

Fir-Tex for interior finish is available in five beautiful pastel shades—Ivrykote, Wheatkote, Aprikote, Greenkote, Blu-kote. Whitekote is available in ceiling tile only. See your lumber supply dealer for suggestions, samples, and estimates.

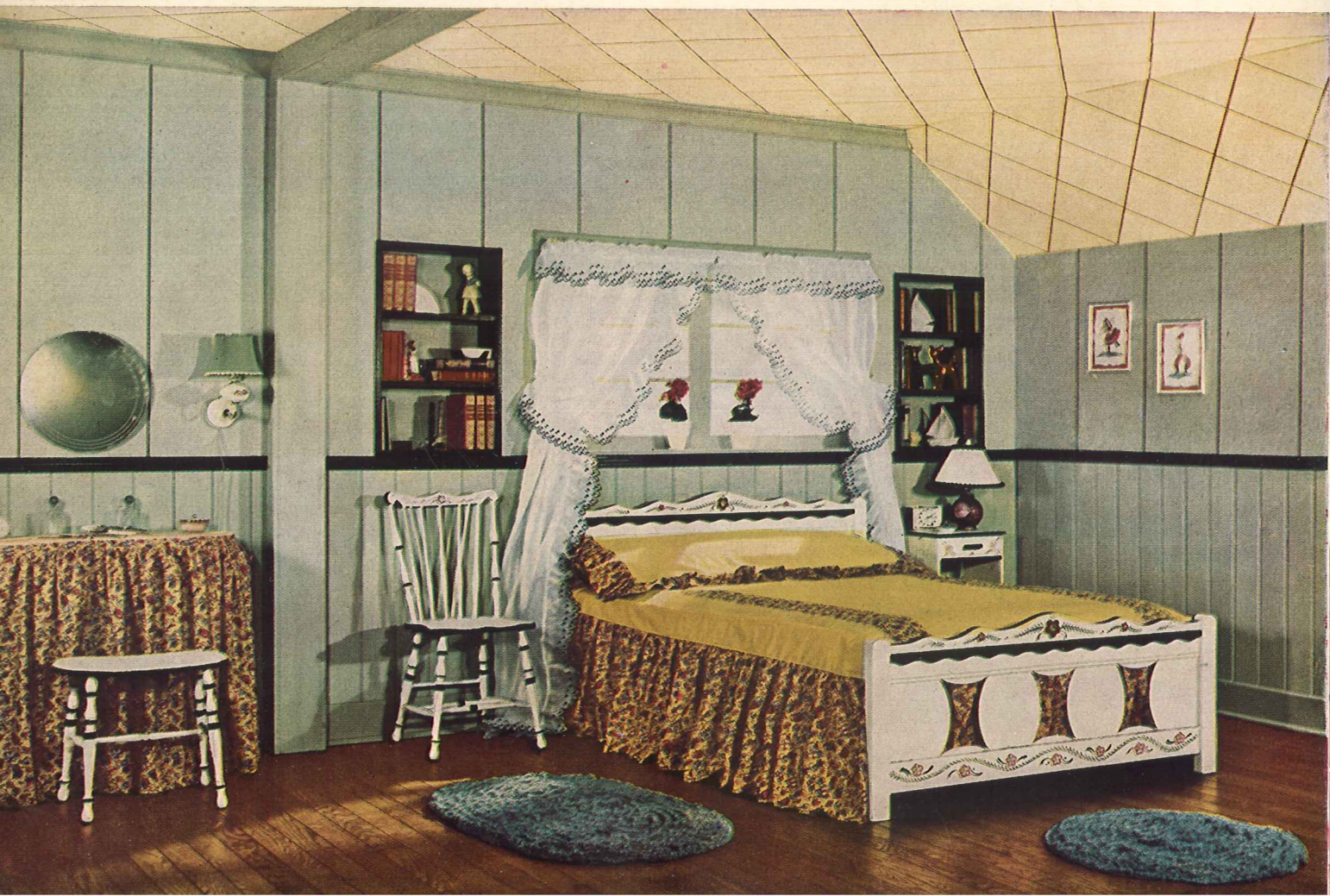
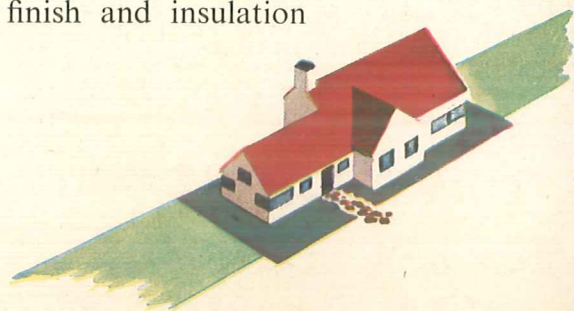
A FIR-TEXED ROOM GIVES YOU MORE LIVING SPACE WITHIN YOUR PRESENT HOME



Increase living space within your home with *Fir-Tex* color panels!

FIR-TEX TRANSFORMS UNSIGHTLY SPACE INTO CHARMING, LIVABLE ROOMS

★ Now you can add extra rooms *within* your present home. There's ample space in most attics to have sufficient storage facilities yet finish part of the attic to make a beautiful bedroom. Waste space is valuable anytime—particularly now. You're going to spend more if not most of your time at home. Make it *more* livable. For extra rooms in either attic or basement, use Fir-Tex Color Panels. Fir-Tex goes up fast, is easy and clean to handle. Fir-Tex is interior finish and insulation combined in one board. No paint, calcimine, wallpaper or further decoration is necessary.





The five beautiful shades of Fir-Tex Color Panels—Ivrykote, Wheatkote, Blukote, Greenkote, Aprikote—permit a wide arrangement of color combinations.

**Fuel bills in this *Fir-Texed* home
will be low!**

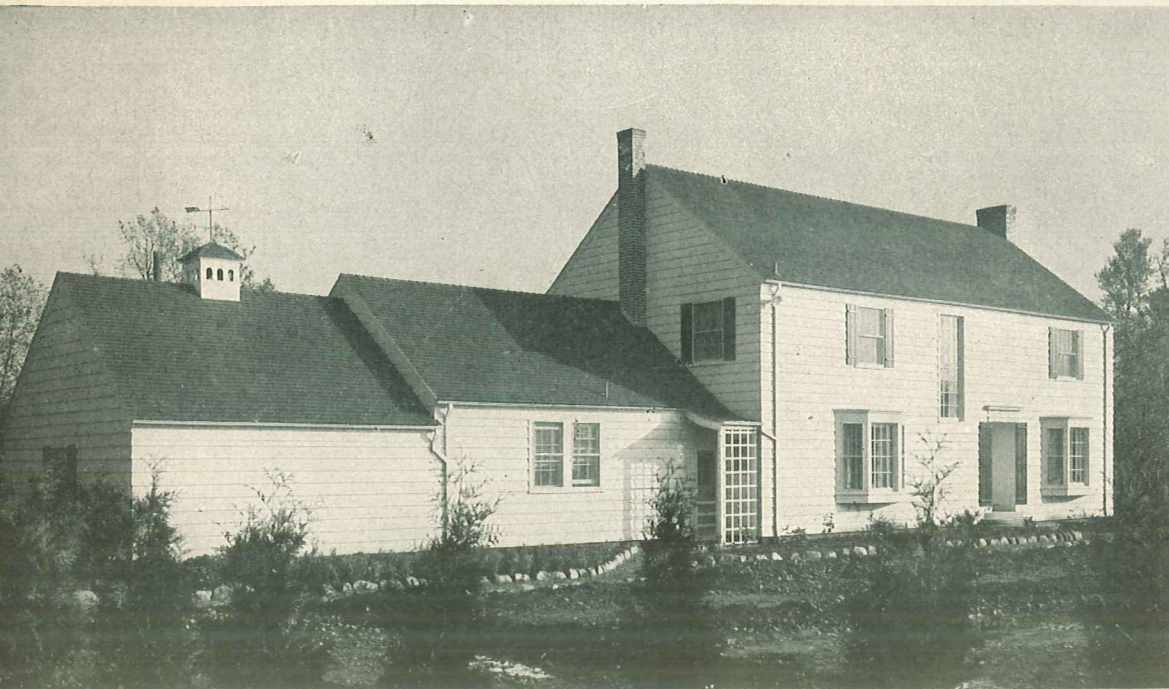
★ Fuel costs in this home will always remain at a minimum. It is well-planned, well-built and well-insulated. Its exterior walls are sheathed with Firkote sheathing which seals the home from heat and cold, wind, dust, and noise. These sturdy insulating sheets give tremendous bracing strength to walls, and will keep this home safe from rack and strain.

The entire roof areas are sealed with this same sheathing. During its long life, this

unseen protection will keep the home safe from the elements. The home will be warmer in winter, cooler in summer, quieter the year 'round.

Fir-Tex beautifies as it insulates. Within this home, every wall, every ceiling is finished with Fir-Tex Colorkote panels and tile. The wide variety of sizes, shapes, and colors has permitted the owner to express his individuality in each of the rooms.

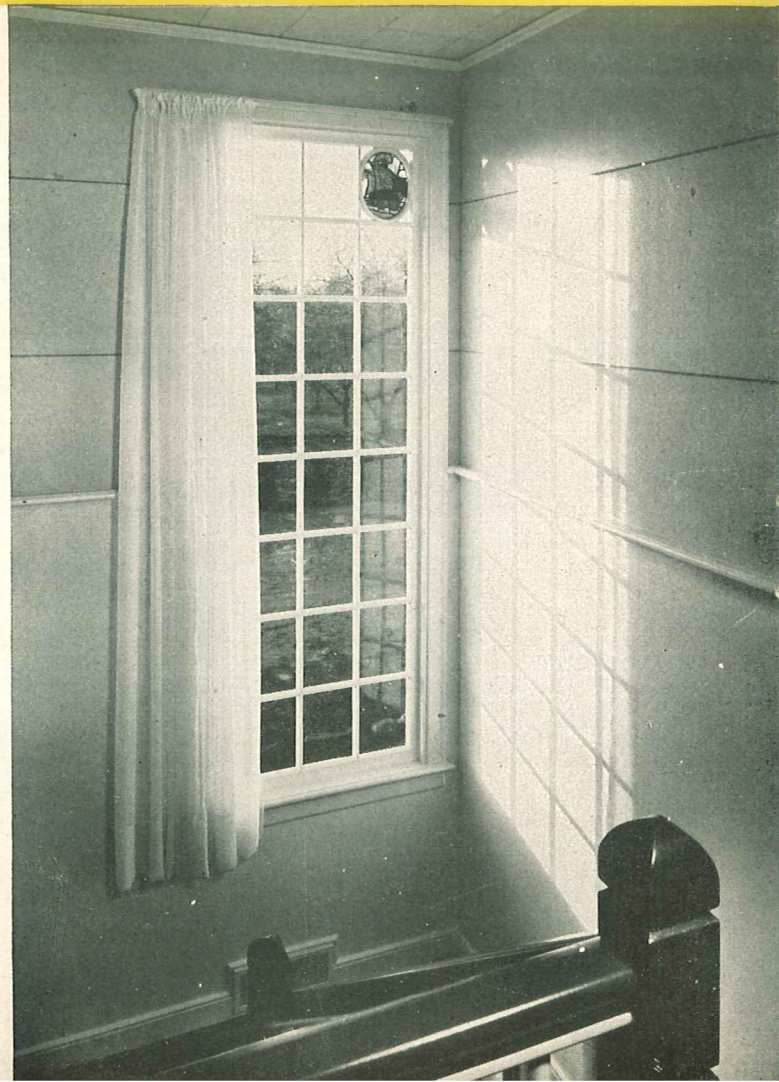
Fir-Texted suburban home



This is a completely Fir-Texted home—architecturally designed and supervised. Sturdy Fir-Text Sheathing was specified and installed on all exterior side wall and roof areas. All other rooms are finished in Fir-Text Colorkote Plank and Tile except bathrooms and kitchen where Fir-Text Tempered Hardboard was used. Thus the entire home is provided with an unbroken area of insulation.



★ What livable, charming rooms these are! No wonder architects, builders and contractors say Fir-Text builds and insulates at the same time—does these two jobs at the cost of insulation alone and provides an interior finish that many prefer to calcimined plaster or wallpaper. All these rooms will be comfortable, too—they are insulated against heat, cold, wind, dust and noise. Fuel bills are remarkably low, and a smaller heating plant was specified for this insulated house.

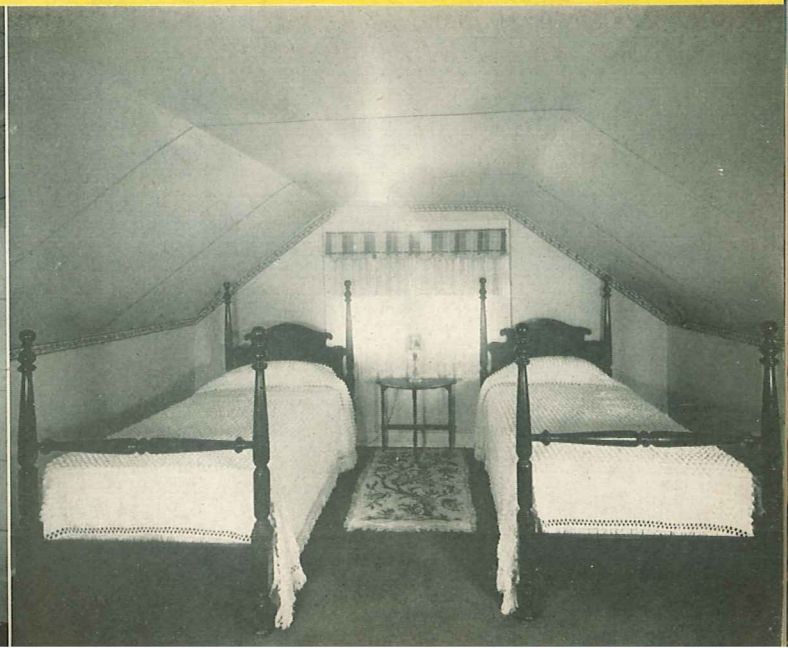




From the wide assortment of Fir-Tex patterns and colors, this owner chose Ivrykote Tile 16"x16" for his ceilings and Wheatkote Plank 16" wide for his walls. The upstairs bedroom is finished complete with Ivrykote panels 4' wide by 8' long.

Fir-Texed farm home

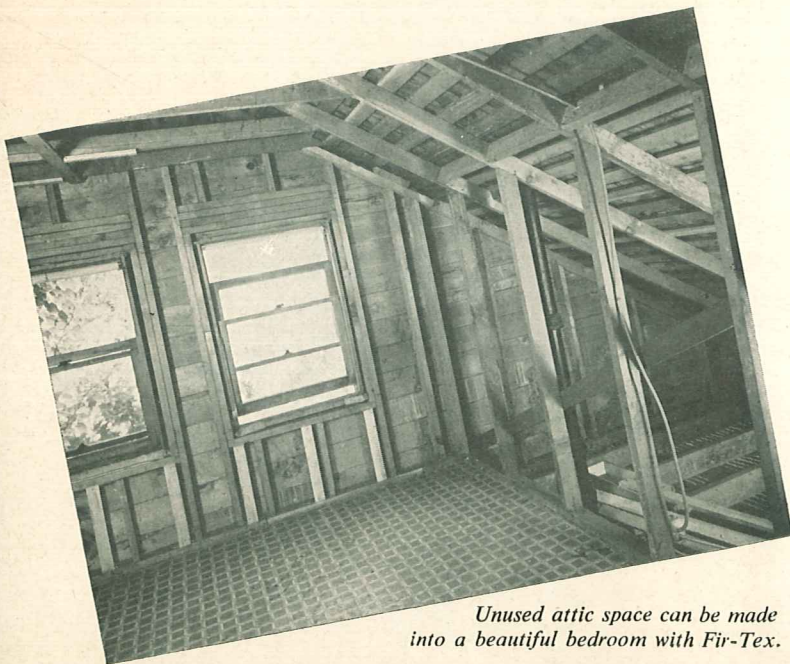
★ This modest little farm home was made cozy and comfortable as well as most attractive by having its entire interior surfaces Fir-Texed. No structural changes or additions were made. It was a simple matter for a good carpenter to line the existing walls and ceilings with Fir-Tex Colorkote panels. Many home owners who are fairly handy with tools prefer to do this simple job themselves. The remodeled Fir-Texed home will be warm in winter, cool in summer and fuel bills will be reduced drastically.





A Fir-Texed attic under construction. Note inexpensive lumber used as a nailing base.

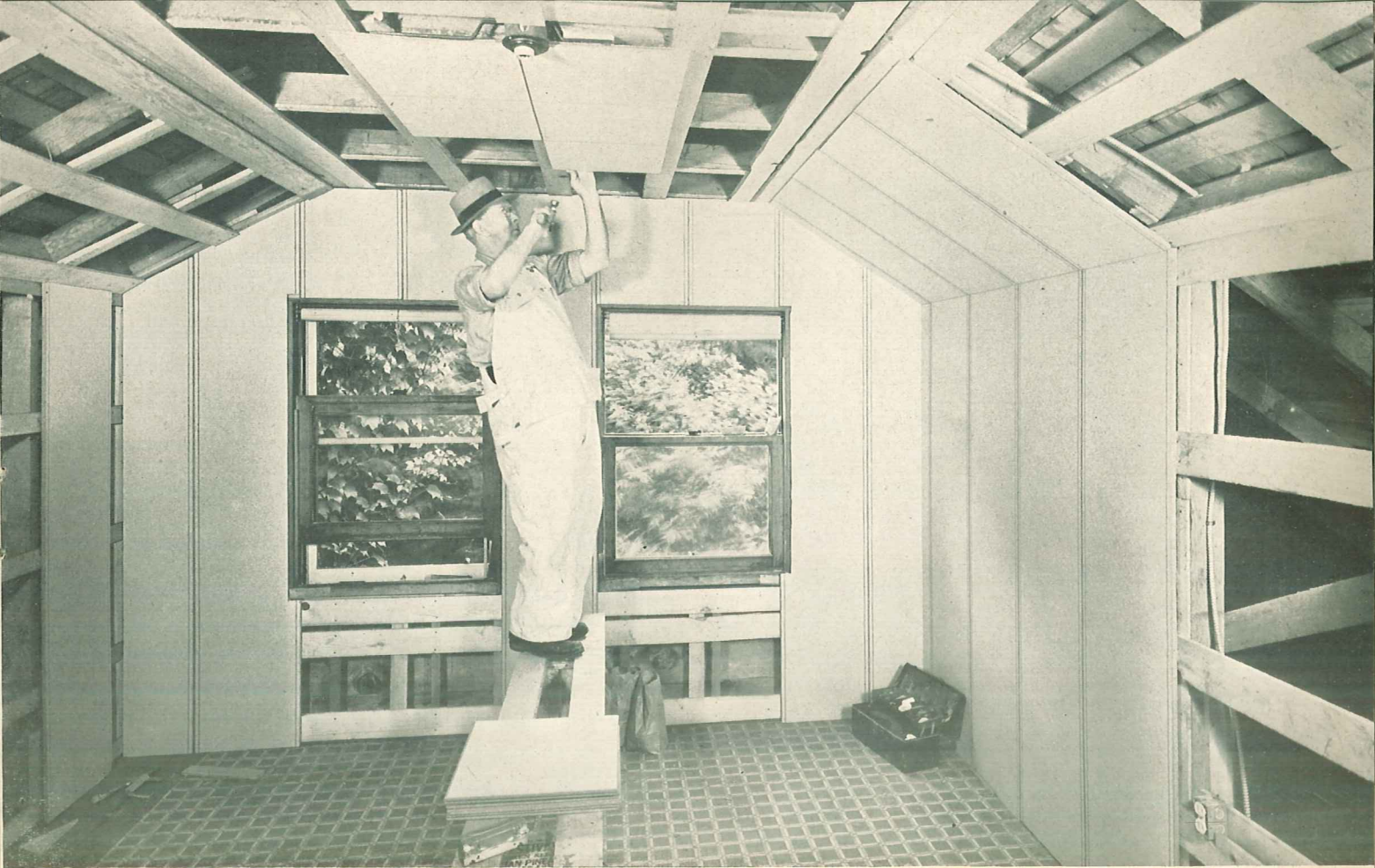
How to prepare walls and ceilings for the application of *Fir-Tex*



Unused attic space can be made into a beautiful bedroom with Fir-Tex.

★ The photograph on this and the opposite page of an actual attic remodeling job at various stages of its progress illustrate the simple, quick and easy method of applying Fir-Tex that has been found most effective. In this part of the average home, the spacing between rafters is usually irregular, frequently 24" or more. While it is possible to nail the Fir-Tex Colorkote interior finish directly to the rafters and studs, little if any labor is saved and the job is never quite as satisfactory as it should be.

★ The approved method is to apply inexpensive crating lumber across the framing members, thereby providing a nailing base. The job illustrated calls for Fir-Tex Plank 16" wide applied vertically, so the crating lumber is spaced fairly wide apart, about 24". Had it been planned to apply the Fir-Tex Plank horizontally, the crating lumber



Applying Fir-Tex to ceiling area. Note that work has been started in center of ceiling.

would have been spaced exactly to coincide with the width of the Fir-Tex Plank; i.e., 16" spacing for 16" Plank, 12" spacing for 12" Plank. Naturally the closer the spacing of the crating lumber, the stronger the job, so many home owners will space the crating lumber even closer together. The important things to remember are: 1st, each Fir-Tex Plank or Tile should have sufficient bearing behind it to support it strongly. 2nd, a nailing strip should be provided wherever there is an angle such as where floor and wall meet and where ceiling and wall meet. Look at the picture above. The first piece of crating lumber was nailed along the floor and provides a firm base for the lower end of each Fir-Tex Plank. Now look at the edges of the ceiling. See how the two pieces of crating lumber which touch each other make a snug cradle to receive the Fir-Tex Plank and Tile.

★ While at first glance, you might think that this "nailing base" method adds to the cost of a job, in actual practice it has not been found to do so. The grade of lumber used is quite inexpensive and takes very little effort to apply. Once the nailing base is in place, the rest of the job is made very much simpler and easier. For instance, you may now lay out the spacing and pattern of the walls and ceiling as you wish. Without this nailing base, it would be necessary to make the pattern fit the rafters as that would be the only place a nail could be driven.

★ After the Fir-Tex Plank and Tile are in place, wood trim is to be applied—base and floor moulding, door and window casing and trim and a light wood moulding in each corner. This wood trim should be painted or stained before it is applied rather than after, as this simplifies the job.

The story of Fir-Tex

It takes centuries to grow trees of usable size. They started growing before any white man crossed the Mississippi! From such trees comes the sound wood from which Fir-Tex is made.

Fir-Tex uses the healthy by-products of lumbering—clean, inside wood which, for ordinary building purposes, is the wrong size or shape, but which is ideal for making insulation boards, because it is easily separated into strong, whole fibers. There is always an abundant supply of this wood (which would otherwise be burned or just wasted). That's why Fir-Tex costs so little, considering its excellent insulating qualities.

The trek through the plant begins

The wood is floated down the Columbia River to the half-mile-long Fir-Tex plant. Here it goes first to the chipper, where sharp, revolving knives cut it into small chips. These pass over an oscillating screen which sorts out off-size pieces.

Heat and pressure loosen fibers

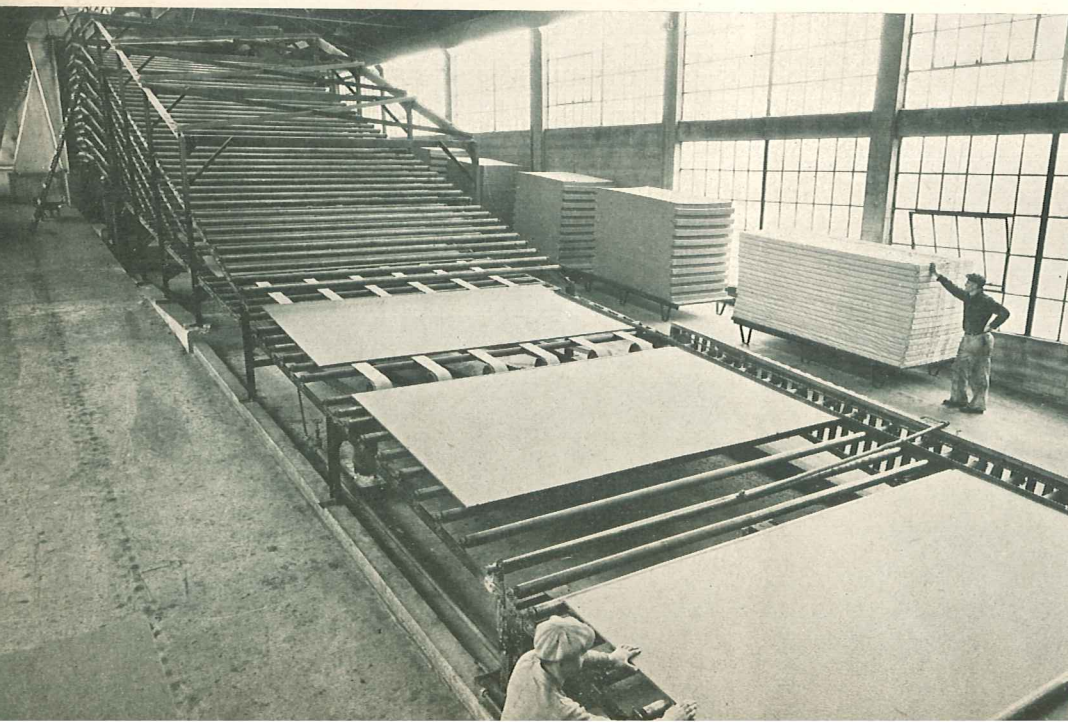
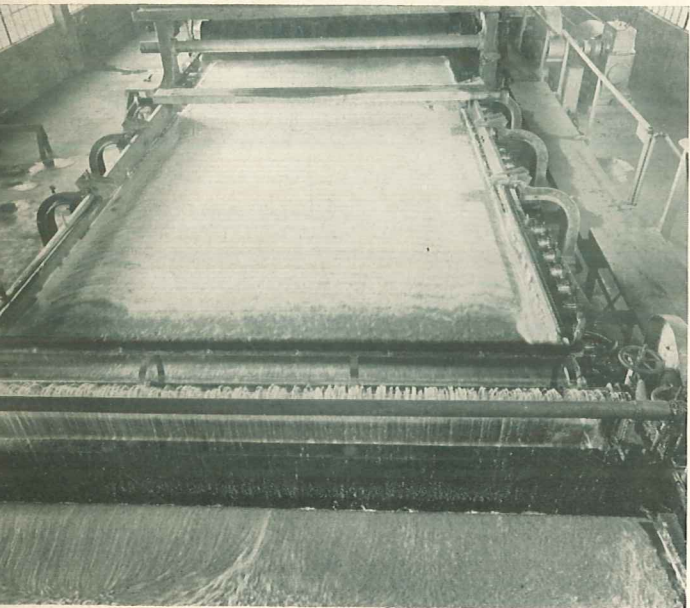
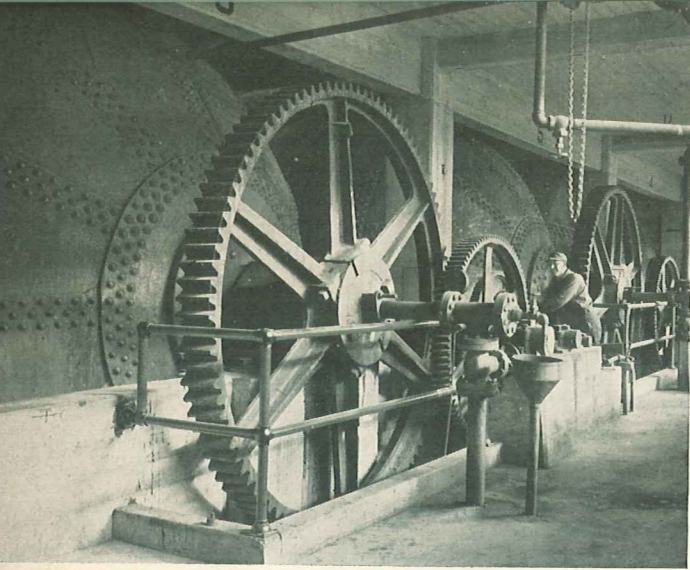
The chips are next dropped from an overhead bin into pressure cookers of fantastic size, which look like playthings of giants from another world. Their purpose is to loosen the fibers of the wood. Heat and pressure—supplied by live steam—do the trick, without damaging the

Top left: Pressure cookers which loosen fibers. These great steel balls are as large as an ordinary room.

Center: The Fourdrinier, board-making machine, one of the marvels of modern industry.

Below, left: You see the Fir-Tex boards as they leave the dry kilns. They are now ready for machining and packaging.

Below, right: Finished Fir-Tex boards, wrapped for shipment to markets all over the world.



fibers. Tough, natural length fibers, which can be felted most effectively, are produced by this method. Every fiber is sterilized, to prevent fungus growth or dry rot.

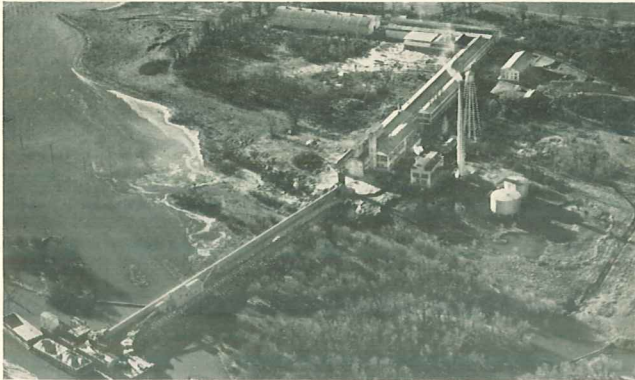
After the fibers are loosened, they are dropped onto a conveyor which carries them to the shredders and refiners. From the time the wood enters the plant until it comes out a finished board, it goes in a straight line, without lost motion.

In the shredders, the cooked, sterilized chips are pulled and rubbed and rolled until the previously loosened fibers come apart. The result: millions of uniform fibers which are all wood—strong, natural wood. No chemicals have been used; consequently the fibers do not lose their strength and firmness.

The loose fibers are now sent to the refiners to be mixed with water.

The material is a thick "soup" of wood and water when it enters the board-making machine. The "soup" floats into it on a slowly moving wire screen. Most of the water immediately runs through the screen, and the rest is removed when the screen passes over suction boxes and under rollers.

The actual forming of the board begins when the fibers, now a thick mush, pass between two moving "felts," which move at the same speed as the wire screen. These felts are endless belts the width of the machine. The product that leaves them is not "mush" but fibers felted and pressed into a solid board.



The Fir-Tex plant at St. Helens, Oregon is in the heart of the country's largest stand of timber. This assures a continuing supply of the inexpensive wood which Fir-Tex uses so advantageously.

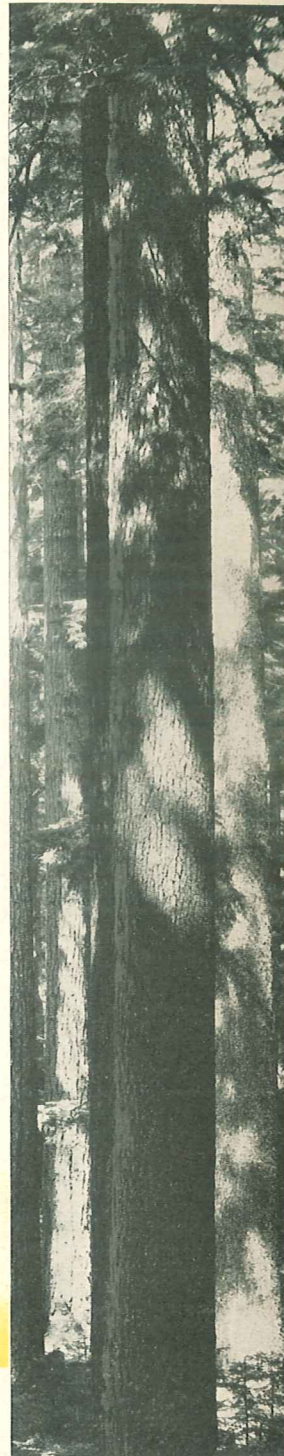
Next the board goes to one of the automatically controlled ovens or dry kilns, where it is slowly dried. The temperature of the air in the oven, and the length of time the board remains there, are as carefully watched as a patient's temperature in a hospital.

Fir-Tex maintains its own laboratory where skilled chemists make regular tests of all Fir-Tex products. Each product is tested for uniformity, density, tensile strength, transverse strength and resistance to moisture. In this very laboratory, too, was developed the revolutionary process of color coating which enables Fir-Tex to give its paneling board outstanding beauty. Because of this Colorkote which is exclusive with Fir-Tex, you can now get paneling Board, Tile and Plank in exquisite pastel shades, which cost no more than ordinary unfinished insulation board.

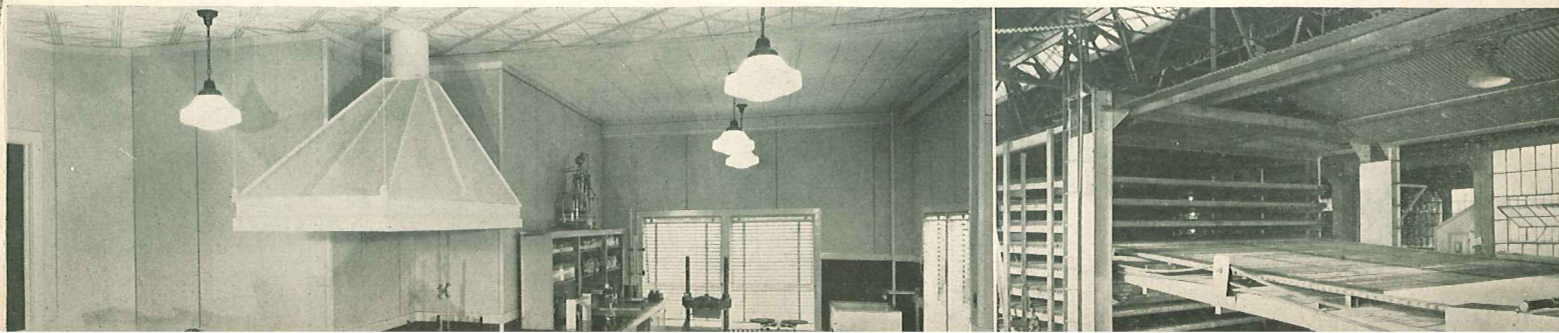
From forest to fiber to finished board. The finished Fir-Tex is now ready for shipment to your lumber supply dealer. Its strength and durability are derived from the strength and durability of the great Northwest trees. And its beauty, the heritage of the forest, is now ready to enhance the beauty of your home.

Fir-Tex visits the beauty shop

The board then gets a coating of color which is baked right into it and becomes a permanent part of the board. All Fir-Tex Colorkote boards receive this attractive, protective coating.



Below, left: The superbly equipped Fir-Tex laboratory, responsible for the many improvements which made Fir-Tex the outstanding building-insulation board. Below, right: Battery of dry kilns where the Fir-Tex boards are scientifically dried. Top, right: Giant trees of the Northwest, from which Fir-Tex is made.



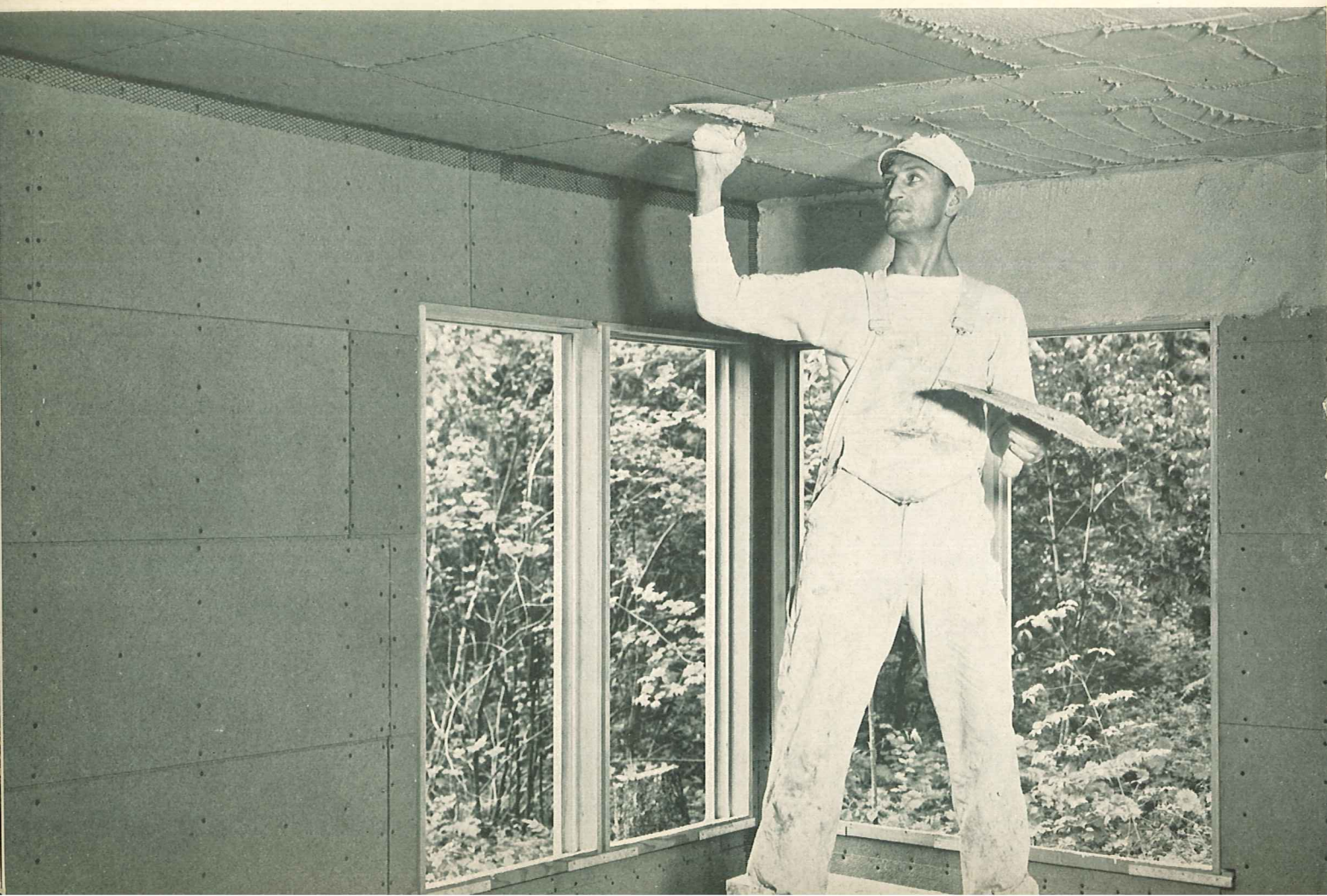
Fir-Tex does two jobs at one
cost...it builds as it insulates!

USE FIR-TEX INSULATING LATH AS A BETTER PLASTER BASE

★ Fir-Tex holds plaster like glue. It assures smooth, attractive walls and ceilings for years to come, free from dirt-revealing plaster marks because dust-laden heat does not pass through. Plaster cracking is reduced to a mini-

mum. Fir-Tex insulating lath is sized 18"x48" and available in several thicknesses to meet any building and insulation requirement. Fir-Tex lath is easily applied directly to studs and joists, ready to receive the plaster.

★ *Fir-Tex Insulating Lath offers a remarkably economical and efficient way to prepare walls for plaster and at the same time to insulate against heat, cold and noise. Here you see the plaster being applied to the Fir-Tex. Note that there is no plaster waste as happens when plaster is applied to ordinary wood lath.*





This picture illustrates the application of Firkote Sheathing on side walls and roof. This home will be entirely sealed from heat, cold, wind, dust and noise. It will be a comfortable home because it is adequately insulated.

USE FIR-TEX INSULATING SHEATHING TO SEAL THE EXTERIOR WALLS AND ROOF OF YOUR HOME . . .

★ Modern construction requires an exterior sheathing material for sidewalls and roof that not only retards the infiltration of wind, dust and moisture, but also seals the home against heat, cold and noise. Fir-Tex Firkote Sheathing meets all these requirements and also provides walls of greater bracing strength than lumber.

Moreover, Firkote Sheathing saves money by replacing ordinary wood sheathing and building paper, and reducing material and labor costs. It insulates so well that fuel costs are cut drastically. Houses built with Firkote have less depreciation, higher resale value.

The cost of Firkote Sheathing is usually no

greater and often less than that of lumber and building paper. And there is only one application cost instead of two. The insulating feature and greater bracing strength of Firkote are *extra* values that cost you nothing. There is also a saving in time, because Fir-Tex Firkote comes in large sheets which are quickly nailed up.

There's no waste with Firkote, as compared with lumber waste of 25 per cent (if applied diagonally). It is easy to saw, but little sawing is needed because, except for window and door openings, it will fit as furnished. There is no loss in shiplapping; when you buy 1,000 feet of Firkote Sheathing you get 1,000 feet of coverage.



The Fir-Tex Acoustical Tile on the ceiling permits an open arrangement of individual offices within a large room area and maintains privacy in each unit.



Fir-Tex acoustical treatment of this High School Auditorium is as effective as it is attractive.

Fir-Tex acoustical tile "shushes" noise, where the control of sound is a factor

The principle of acoustics is learned at Mother Nature's knee. In a forest after an ice storm when every twig, every bough, every leaf is coated with ice, every sound that is heard—the fall of a limb, the caw of a crow—is harsh and multiplied. None of this sound is absorbed and it reverberates harshly. Now again in this same wood, but this time after a heavy fall of snow, the sounds of nature are gentled and stilled. The trill of the bird and the song of the brook are not silenced but come in sweeter tone than before, undistorted by reverberation.

Fir-Tex Acoustical Tile is the ideal material for the architect to use when he wishes to

beautify and also control sound within a room. It is scientifically engineered to absorb reverberation and take the shock or impact out of noise, and do these things *without surface defacement or impairment of its thermal insulating properties.*

Fir-Tex Acoustical Tile is available in two thicknesses, $\frac{1}{2}$ ", 1"; three densities, low, medium, standard; four colors, white, ivory, cream, buff. This permits an unusual range of choices to meet the demands of any acoustical problem. The elimination of extra manufacturing expense enables Fir-Tex Acoustical Tile to be sold at a lower cost per unit of sound absorbed than many comparable materials.



This Fir-Tex Acoustical ceiling treatment gives privacy to each conference within these quarters and adds dignity to the whole.

★ No wonder so many of the country's theatres, offices, studios and schools are finished with Fir-Tex Acoustical Paneling. The savings Fir-Tex represents in materials, labor and fuel costs—as well as nerve strain—are too great to be ignored by any institution or firm. For the price of insulation alone, you can secure insulation, acoustical control and charming interior finish! Fir-Tex insulation is especially needed wherever there is air-conditioning.



Before this Chamber of Commerce membership room was treated with Fir-Tex Acoustical Tile, there was a bedlam of noise. Now all telephones can be in use simultaneously without anyone disturbing his fellow worker.

At the cost of insulation alone *Fir-Texed*
recreational quarters are provided with colorful
interior finish, sound control, and insulation

★ More and more, business men are impressed with the wisdom of using Fir-Tex insulation for recreational quarters of all kinds, as well as in their homes. The fact that Fir-Tex does two jobs at the cost of one appeals to their business instincts.

The colorful, modern lobby shown below at left is of an unusually attractive suburban theater. Patrons are enthusiastic about the colorful, restful

surroundings and appreciate the fact that the sound screen is plainly heard in every part of the house. By using inexpensive Fir-Tex the architect was able to provide this beautiful interior and keep within his limited budget.

In the bowling alley shown below, right, Fir-Tex spray painted Panel Boards provide a pleasing interior and absorb just the right amount of excess reverberation.

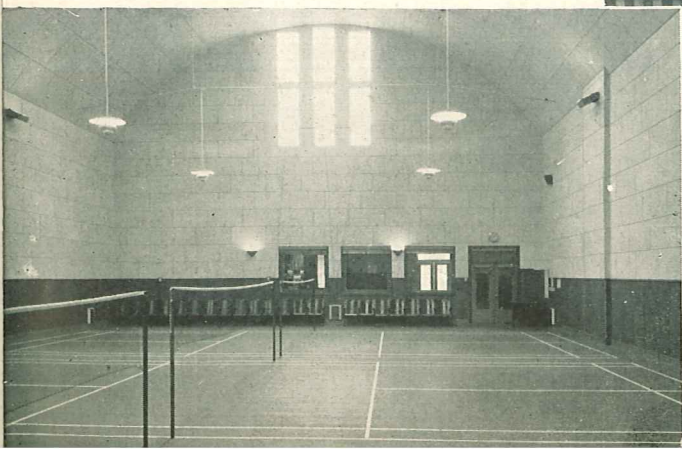
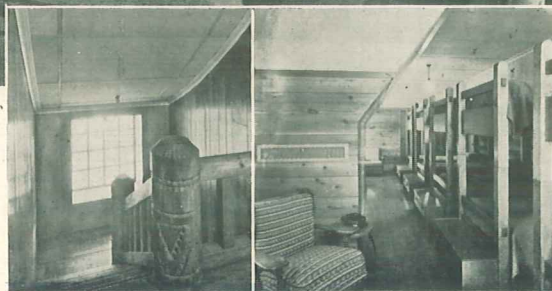
★ *Below: Theatres, bowling alleys — every place of recreation where control of sound is a factor — will be improved amazingly when Fir-Tex is used.*





★ Interior views of Timberline Lodge, on Mt. Hood, Oregon. 100,000 sq. feet of Fir-Tex were used in this million dollar sports paradise. Note how effectively the Fir-Tex ceiling blends with the knotty pine walls and picturesque furnishings. For extra protection against Mt. Hood's bitter cold, Fir-Tex was also built into the walls and over ceiling joists, so that guests will always find their rooms comfortably warm.

★ When the owner selects the materials for finishing the interior of his recreational hall, be it a moving picture house, skating rink, bowling alley or badminton court, he is confronted with two serious problems. First, he must stay rigidly within his budget. Second, he must accomplish three results: beauty, quiet, comfort. That is why Fir-Tex spray painted Finish Boards have been so enthusiastically received as a complete solution of his problems.



Left: Badminton court. Here Fir-Tex is used for both interior finish and sound control.

This beautiful roller skating rink owes much of its distinctive appearance to its Fir-Tex walls and ceiling. The attractive color scheme is enhanced by indirect lighting. Fir-Tex hardboard and Fir-Tex Paneling are used here in combination.



Above: The handy size Fir-Tex Refrigeration Block, held by two ice picks, has just been dipped in smoking hot asphalt and is slid into snug position.

Commercial refrigeration uses *Fir-Tex* with profit!

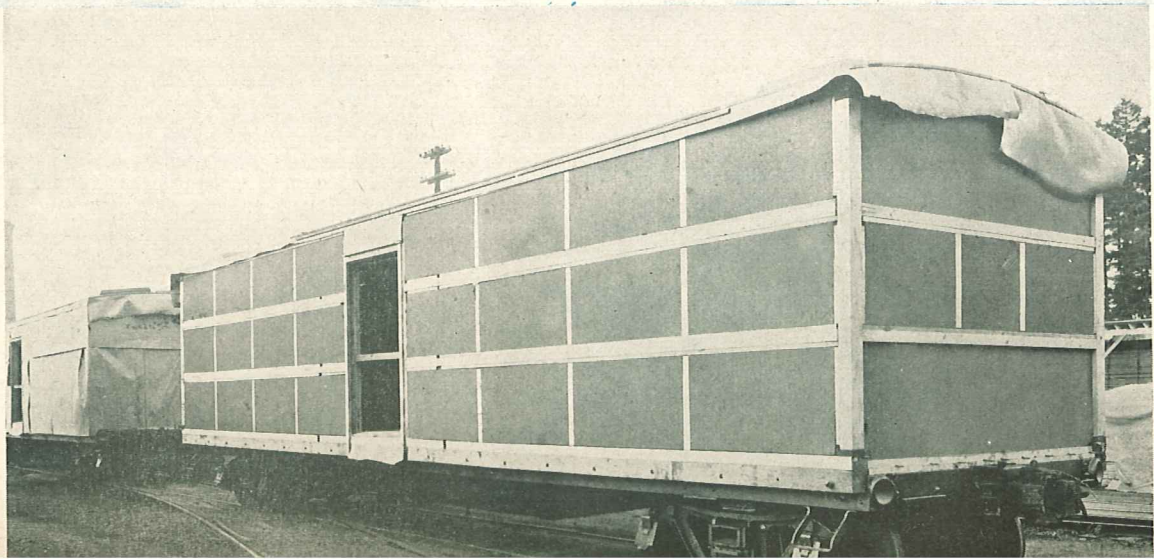
★ Insulation *has* to be right when used for commercial refrigeration. Here, insulation is more than a matter of comfort and of lowered fuel bills, important though these are. In commercial refrigeration and cold storage, a definite degree of cold must be maintained, or valuable stocks of perishables will be lost.

The dependability of Fir-Tex Refrigeration Insulation Blocks in maintaining minimum temperature at lowest cost has led to its selection by a significant number of manufacturers of all kinds of commercial and domestic refrigerators.

Makers of railroad and truck refrigeration cars specify Fir-Tex again and again. It possesses insulation qualities of super-efficiency, is resistant to growth of any fungus and mold, and has very low water absorption.

Fir-Tex is a most effective and economical insulation material available for cold storage warehouses, breweries, wineries, meat and creamery cookers and air conditioning plants. Currently Fir-Tex is being used for cold storage insulation in cantonments and other military establishments throughout the world.

Fir-Tex Refrigeration Insulation is used extensively in Northern Pacific; Great Northern; Chicago, Burlington and Quincy; Union Pacific System and Southern Pacific refrigerator cars.



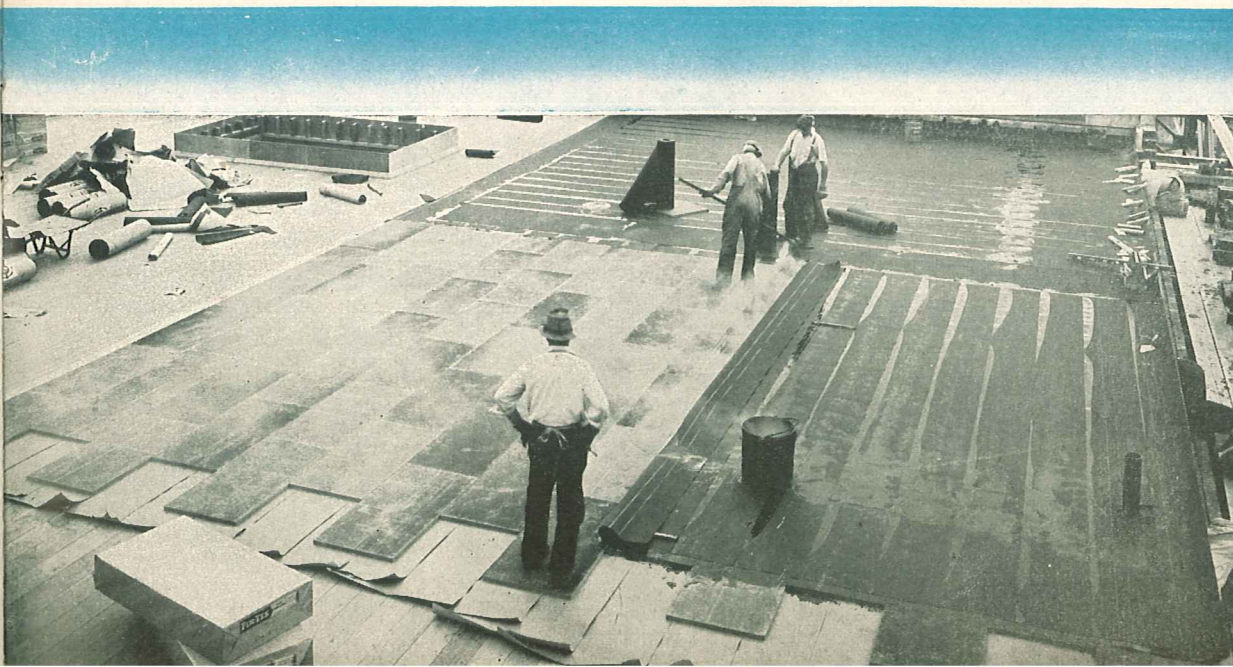
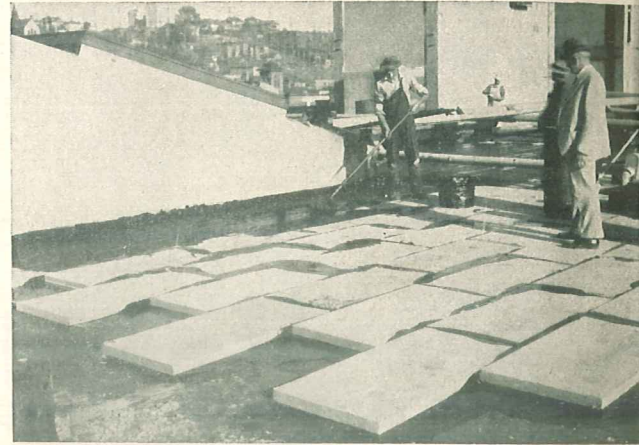
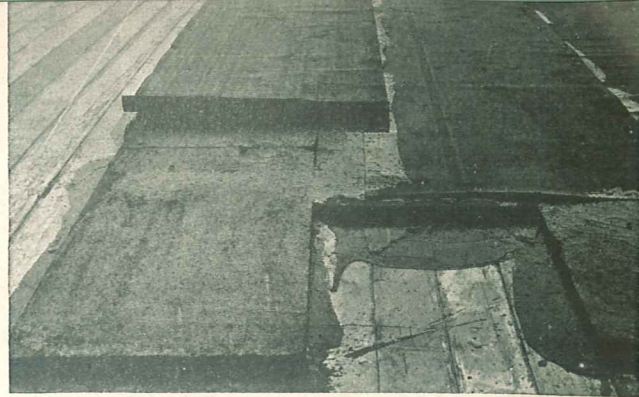
**The *Fir-Tex* type
of roof insulation is
a "must" on most
commercial buildings**

★ Fir-Tex Roof Insulation Board is a low density board especially manufactured for use on flat decked roofs of wood, steel, concrete, structural gypsum or unit tile. Because of its exceptional insulating properties, it is widely used on large industrial plants, schools, commercial, municipal and federal buildings.

Fir-Tex Roof Insulation, like all Fir-Tex products, is playing an important part in the war program. Millions of feet of this tough, enduring, protective covering are being used by hundreds of large suppliers of war materiel to the Army, Navy, and Maritime Commission. Military restrictions make it inadvisable to list names and show pictures.

Four types available

- ★ Square edged, homogeneous board up to 1½" without lamination.
- ★ Offset edges, homogeneous board up to 1½" without lamination.
- ★ Square edged, 2" to 4" laminated.
- ★ Offset edges, 2" to 4" laminated.



*At left and above:
Applications of
Fir-Tex
Roof insulation.*

Fir-Tex can transform your basement
into the hobby room of your choice



★ There should be one place in the home a man can call his own—a place where he can keep his photographic equipment, fishing tackle and guns. It is his “sanctum.” But never believe the rest of the family won’t enjoy the room, too. Wartime is home time. A Fir-Texed hobby room will make that time thoroughly enjoyable. Fir-Tex Colorkote panels and tile are available in five beautiful pastel shades—Ivrykote, Wheatkote, Blukote, Greenkote and Aprikote. Factory finished, no further painting or decoration needed.

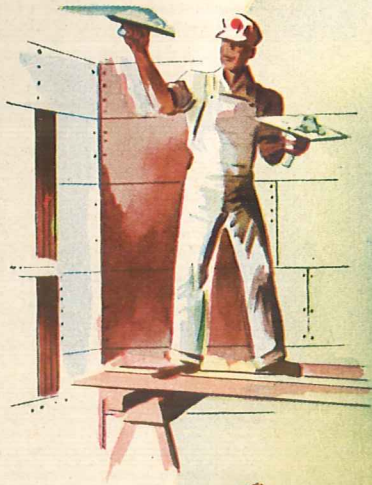


**This *Fir-Texted* bedroom insures
restful slumber**

★ Just as it retards the passage of heat and cold and keeps this room at an even temperature, so does this Fir-Tex Colorkote paneling retard the passage of sound from other parts of the home or from street noises outside. Eminent and unbiased engineers have made exhaustive tests of the sound deadening properties of Fir-Tex and the reports of their tests prove conclusively its value in the prevention of transmission of sound.



There is a Fir-Tex insulating



Paneling for
Interior Finish
Walls and Ceiling

Interior Finish
Plus Sound
Control and
Acoustical
Correction

PURPOSE	PRODUCT	DESCRIPTION
	Ivrykote and Colorkote Building Board	Square edged Insulating Board with glazed, washable surface. Available in five colors: Ivrykote, Wheatkote, Blukote, Aprikote, Greenkote. Standard thicknesses: Ivrykote $\frac{1}{2}$ ", $\frac{3}{4}$ ", 1". Colorkote, $\frac{1}{2}$ " only.
	Ivrykote Thrift Wall Board	An inexpensive square edged wall board for use in temporary construction or where budgets are small. Available only in $\frac{3}{8}$ " thickness and in Ivrykote surface. Not available in Plank or Tile.
	Ivrykote and Colorkote Finish Plank	Long edges beveled; tongue and groove joint. Available in same five colors as Ivrykote and Colorkote Building Board. Standard thicknesses: Ivrykote, $\frac{1}{2}$ ", $\frac{3}{4}$ ", 1". Colorkote, $\frac{1}{2}$ " only.
	Ivrykote and Colorkote Tile	Beveled on all four sides; tongue and groove joint. Available in following colors: Ivrykote, Whitekote, Wheatkote, Blukote, Aprikote, Greenkote. Standard thicknesses: Ivrykote, $\frac{1}{2}$ ", $\frac{3}{4}$ ", 1". Whitekote and Colorkote, $\frac{1}{2}$ " only. Whitekote available in Tile sizes only.
	Fir-Tex Hardboard Products	Dense rigid sheets having no insulation value, but especially designed to withstand hard use and exposure to moisture. All items available in standard rich, dark brown. Tempered items also available in black.
	Acoustical Tile	Selected low density Fir-Tex Tile, with maximum sound absorptive qualities. Sprayed with special acoustical paint so that their acoustical properties will not be impaired. Standard colors: White, Ivory, Cream and Buff. Used for the control of sound in theaters, churches, auditoriums, broadcasting studios, stores and offices. Standard thicknesses, $\frac{1}{2}$ " and 1".

board for every purpose

... FIR-TEX INSULATES AS IT BUILDS!

SIZES		PURPOSE	PRODUCT	DESCRIPTION	SIZES	
4'x6'	4'x9'	Plaster Base	Insulating Lath	Long edges shiplapped, ends square edged. Made especially to receive and hold plaster. Fir-Tex Insulating Lath is nailed directly to the studs and joists and the plaster applied directly to it where it sticks like glue. Standard thicknesses, $\frac{1}{2}$ ", $\frac{3}{4}$ " and 1".	18"x48"	
4'x7'	4'x10'					
4'x8'	4'x12'					
4'x6'	4'x9'	Exterior Wall Sheathing and Exterior Wall Finish	Firkote Sheathing	Strong, sturdy boards especially made for exterior sheathing. Integrally waterproofed fibers give maximum resistance to moisture. Standard thickness, 25/32". <i>Large Sheet Type:</i> Square edged. <i>Horizontal Type:</i> Long edges, Vee-jointed. Ends, square edged.	4'x8'	4'x9 $\frac{1}{2}$ '
4'x7'	4'x10'				4'x8 $\frac{1}{2}$ '	4'x10'
4'x8'	4'x12'				4'x9'	4'x12'
WIDTHS 6", 8", 10", 12", and 16"		Insulation of Pitched Roofs	Firkote Sheathing	See above	2'x8'	
LENGTHS 8', 10', 12'			Building Board	See opposite page	See opposite page	
SMALL Tile Sizes 12"x12"	LARGE Tile Sizes 16"x32"	Insulation of Flat Decked Roofs under Built-up Roofing	Roof Insulation Board	Low density; maximum insulation properties. Thicknesses, $\frac{1}{2}$ " to 2" or more. Size: Square edge, 24" x 48"; offset edge, 22" x 47". Standard thicknesses, $\frac{1}{2}$ ", 1", 1 $\frac{1}{2}$ ", 2" and thicker upon special order.	Square Edge 24"x48"	
12"x24"	18"x48"				Offset Edge 22"x47"	
16"x16"	24"x48"	Insulation under Floors, between Studding and over Joists	Building Board	Square edged Insulation Board. Standard thicknesses, $\frac{1}{2}$ " and 1".	Same as Ivrykote and Colorkote Building Board See opposite page	
24"x24"						
Standard Sizes and Thicknesses		Refrigeration and Cold Storage Insulation	Refrigeration Insulation Blocks	Low density; high insulation value. Made in one homogeneous board up to 1 $\frac{1}{2}$ " without lamination. Standard thicknesses, 1", 1 $\frac{1}{2}$ ", 2", and 3".	12"x36"	
					18"x36"	
					24"x48"	

SALES REPRESENTATIVES

FIR-TEX OF COLORADO
Denham Building
Denver 2, Colorado

FIR-TEX OF FLORIDA
P.O. Box No. 901
Fort Lauderdale, Florida

FIR-TEX OF GEORGIA
554 Luckie Street, N.W.
Atlanta, Georgia

FIR-TEX OF ILLINOIS
205 West Wacker Drive
Chicago 6, Illinois

FIR-TEX OF IOWA-NEBRASKA
906 W.O.W. Building
Omaha 2, Nebraska

FIR-TEX OF MARYLAND
506 South Central Avenue
Baltimore 2, Maryland

FIR-TEX OF MICHIGAN
14290 Meyers Road
Detroit 27, Michigan

FIR-TEX OF MICHIGAN
528 Bridge Street, N.W.
Grand Rapids 4, Michigan

FIR-TEX OF MINNESOTA, INC.
2102 Wabash Avenue
St. Paul, Minnesota

FIR-TEX OF MISSOURI
Roosevelt Building
St. Louis 8, Missouri

FIR-TEX OF MISSOURI-KANSAS
1805 Grand Avenue
Kansas City 8, Missouri

FIR-TEX OF NEW ENGLAND
Rutherford Avenue
Charlestown, Mass.

FIR-TEX OF NORTHERN CALIFORNIA
206 Sansome Street
San Francisco 4, California

FIR-TEX OF SOUTHERN CALIFORNIA
812 East 59th Street
Los Angeles 1, California

FIR-TEX OF UTAH
P.O. Box 1530
Salt Lake City 11, Utah

FIR-TEX OF WASHINGTON, INC.
2462 First Avenue South
Seattle 4, Washington

FIR-TEX WESTERN (ALBERTA), LTD.
11415 86th Street
Edmonton, Alberta, Canada

FIR-TEX WESTERN (B. C.), LTD.
513 Metropolitan Building
Vancouver, B. C., Canada

S. C. HOOPER
517 Sinclair Building
Fort Worth 2, Texas

PENN-NEW YORK FIR-TEX, INC.
110 Pearl Street
Buffalo 2, New York

J. C. PRACHT LUMBER CO.
P.O. Box 971
Augusta, Georgia

FIR-TEX INSULATING BOARD COMPANY

General Offices:
PORTER BLDG., PORTLAND 4, OREGON

Plant:
ST. HELENS, OREGON

FIR-TEX

INSULATING BOARDS