

# Portable

# Scale Remover



Air pulse generator unit



Fluid supply unit

The air pulse generator unit intermittently shoots a mass of air into the piping.

The fluid supply unit, on the other hand, puts fluid into the piping.

When a mass of air is shot, it instantly becomes a large air bubble.

The fluid is pushed by air bubbles and advances at a speed according to the air pressure. The fluid collides with the scale adhering to the piping and is stripped off. Peeled scale flows out with the fluid from the outlet.

As the series is repeated over and over again, the scale will gradually decrease.

Only 0.3–0.7 Mpa compressed air is required as a power.

The shoulder straps and handbag handles are also useful for moving.

Not only for water but also for hydrochloric acid solution is available.

# Cleaning example



Refrigerant pipe



Oil cooler



Blazing plate heat exchanger



Mold



Mechanical cooler



Plate type heat exchanger



water pipe



Nozzle



Vacuum evaporator



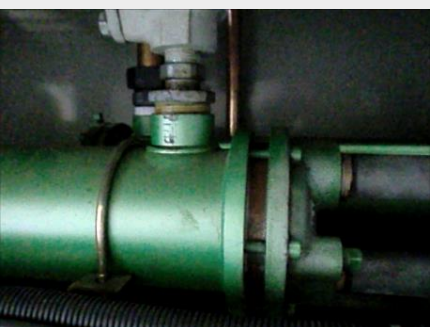
Toilet bowl



Factory piping



Heater core



Oil cooler



Ultra-fine cooling water piping



Cooling drum

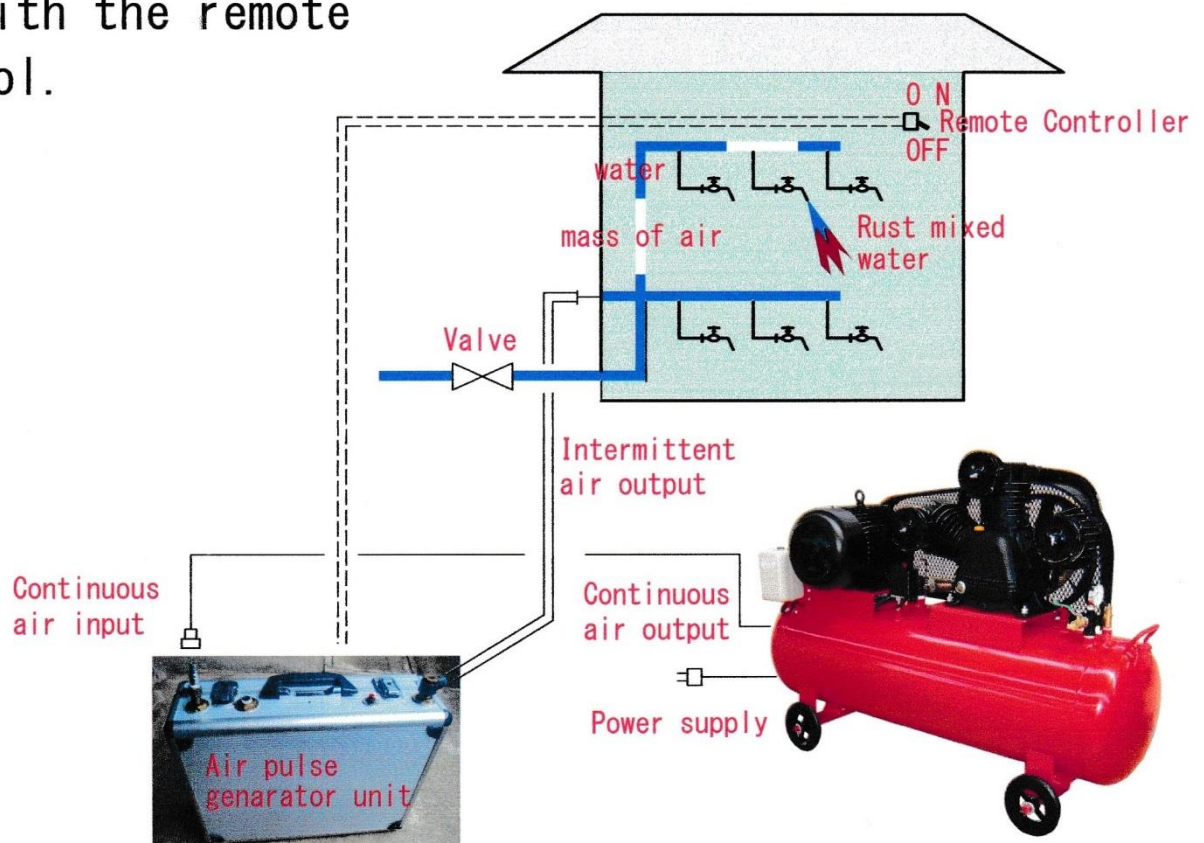
# Specification

Air pulse generator unit		Fluid supply unit	
Housing material	Aluminum surface	Housing material	Aluminum surface
Case size	470x360 x150mm	Case size	365x250 x225mm
Weight	9 kg	Weight	4kg
Power	Filtered compressed air	Power	Filtered compressed air
Air connection	R1/4	Fluid	Acid resistant type (made of polypropylene)
Supply pressure	0.3 - 0.7 Mpa	Fluid temperature	60°C
Discharge pressure	0.02 - 0.7 Mpa(設定による)	Suction	Self-priming type
Cleaning pipe	φ 12 mm	Discharge pressure	0.3 - 0.7 Mpa
Remote control	20m	Maximum flow rate	13LPM (MAX)

## Characteristics

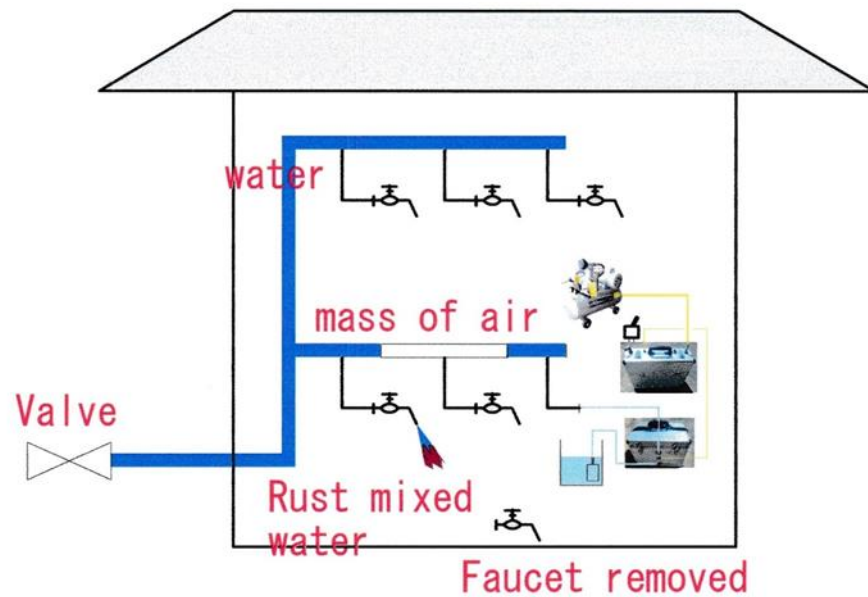
1. It can be operated remotely.

Place the unit outdoors and turn the unit on and off with the remote control.



2. In the case of distribution pipe cleaning, other companies' products can only be installed near the water supply valve, but with a piping scale cleaner, it can be sucked from a bucket in the room.

Put the unit indoors and turn the unit on and off directly.



3. The amount of cleaning fluid used is minimal.

Movie:

<https://www.youtube.com/watch?v=ScrqD15m>

u00

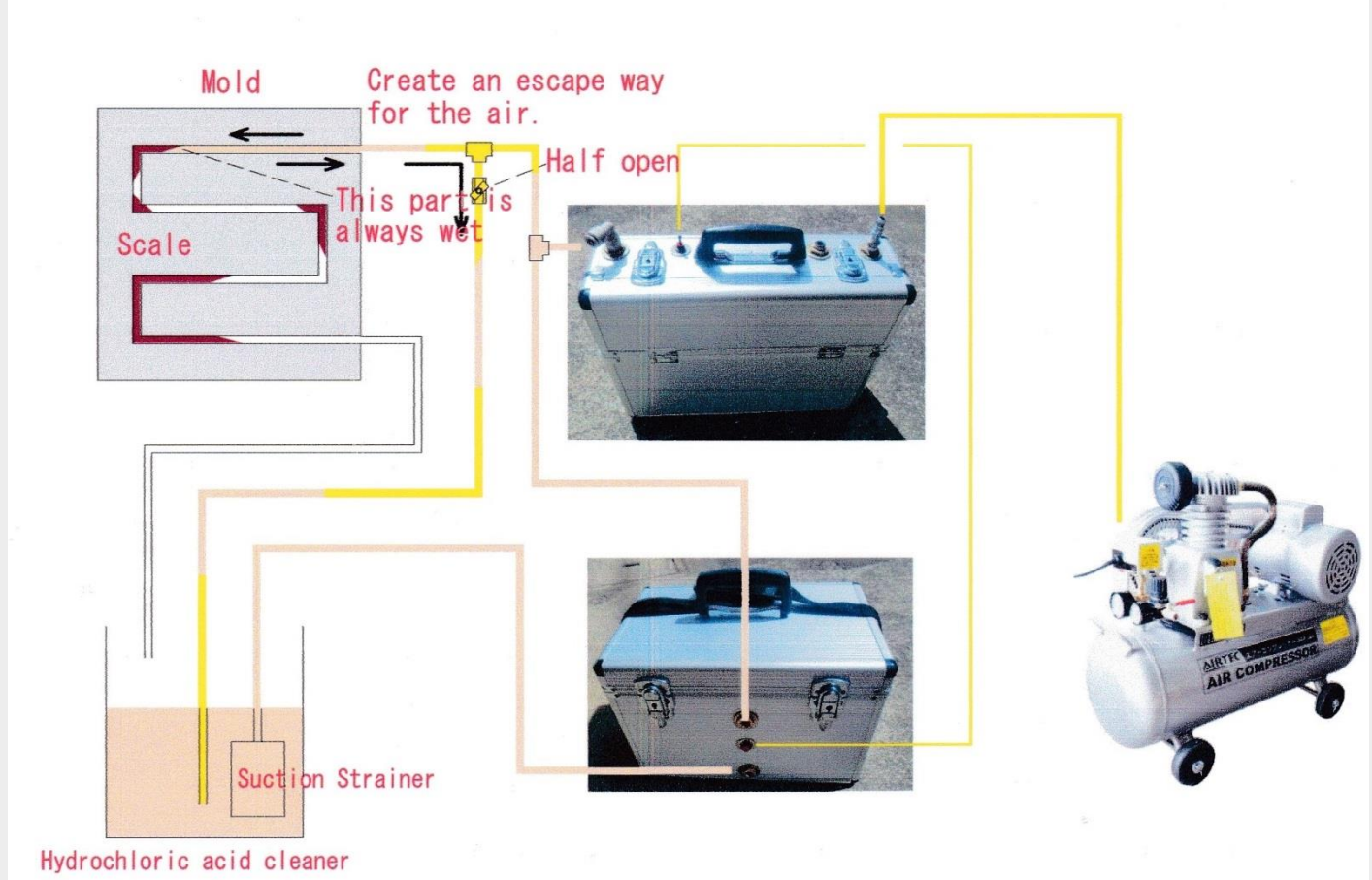
I have cleaned a 70L boiler with only 20L of cleaning agent. There is no need to carry heavy cleaning equipment where there is no cart.

After washing, only take back 20 liters of waste liquid.



4. I have restored the completely blocked piping.

Completely closed piping is restored with hydrochloric acid cleaner.



5. It is lightweight. It only carries two units.

6. Simply connect air to the air pulse generation unit to generate a pulse, and the fluid supply unit built-in pump starts operating.

Click → <https://www.youtube.com/watch?v=1bT2J45IYI4>

Worp Ogawa Kazutoshi

7-19 Yokotacho, Kashi-ku, Shizuoka City

Tel: 090-1234-1875 Email: [worp@nifty.com](mailto:worp@nifty.com)