

# Color Choice for 1955



**Armstrong** *Asphalt Tile*

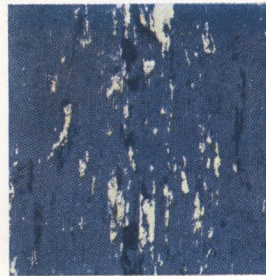
THE LOW-COST FLOOR WITH THE LUXURY LOOK®

# Armstrong

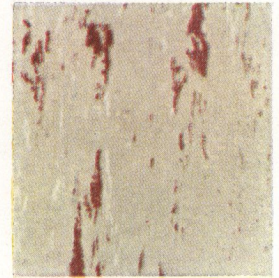
## ASPHALT TILE

Here is the whole range of handsome, modern colors in Armstrong Asphalt Tile—colors that will blend harmoniously with any decorative scheme. The smooth, lustrous surface of this durable floor will stay bright and new looking for years. Dirt and dust whisk away quickly and easily. Even cigarette burns are readily removed. Armstrong Asphalt Tile is an ideal floor for basements and basementless houses, because it's unaffected by the normal alkaline moisture present in concrete subfloors.

**GENERAL INFORMATION.** Armstrong Asphalt Tile is made in 9" x 9" tiles,  $\frac{1}{8}$ " and  $\frac{3}{16}$ " thick. All colors marked with an asterisk (\*) are also available in Armstrong Greaseproof Asphalt Tile.



Lagoon Blue  
No. D-952



\*Palomino Beige  
No. C-926



Gray Taupe  
No. C-947



\*Cedar  
No. B-918



\*Cinnabar  
No. C-924



Antique Green  
No. B-935



Ivory  
No. D-900



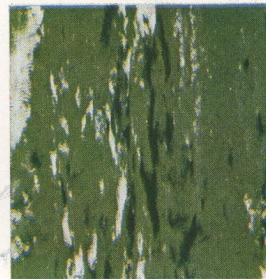
\*Pearl Gray  
No. C-946



Cameo Gray  
No. C-961



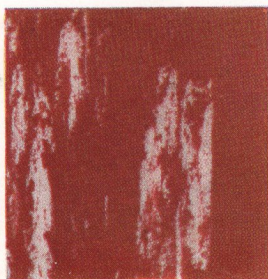
Tokay  
No. B-919



\*Foam Green  
No. C-902



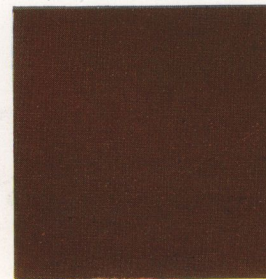
Tennessee  
No. D-942



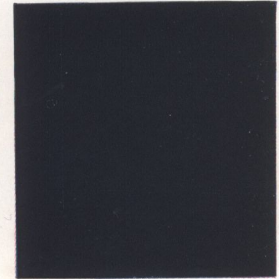
Corinthian Red  
No. D-964



\*Ebony  
No. B-905



Pompeian Red  
No. A-200



Black  
No. A-210

**FEATURE STRIPS.** Striking accent colors may be used to give your floors of Armstrong Asphalt Tile special individuality. Use them to outline borders around the perimeter of a room or to set off floor areas where rugs are used. Armstrong Asphalt Tile Feature Strips are available in 1", 2", and 3" widths and in these 6 colors.



White No. D-270



Yellow No. D-246



Light Green No. C-257



Garnet No. D-275



Venetian Red No. C-204



Black No. A-210



Black No. CB-210



Havana No. CB-206

**TOP-SET ASPHALT COVE BASE**

The smooth, curved surface of Armstrong Top-Set Asphalt Cove Base gives rooms a trim, "finished" look. It eliminates dirt-catching corners, makes cleaning easier. Available in two colors, in 4" and 6" heights.



**ASPHALT TILE DIE-CUT INSETS**

Armstrong Die-Cut Insets are 18" x 18" in size. Easy and economical to install, they require no special cutting on the job. Those shown here are only part of the large assortment of styles available.



Top Hat No. 515



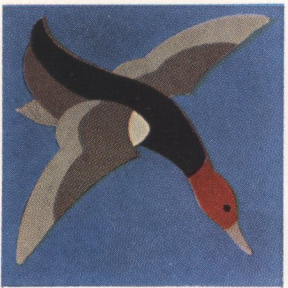
Sandtrap No. 523



Pointer No. 511



Champagne No. 514



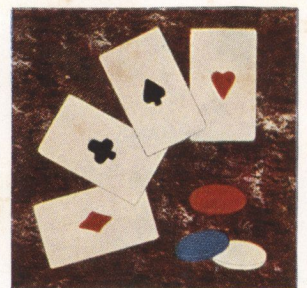
Wild Duck No. 500



Cocktail No. 501



Sailfish No. 517



Four Aces No. 520



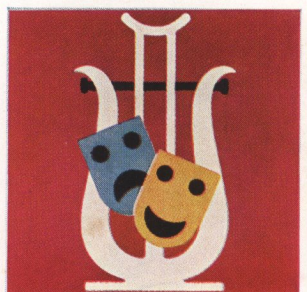
Palm Tree No. 524



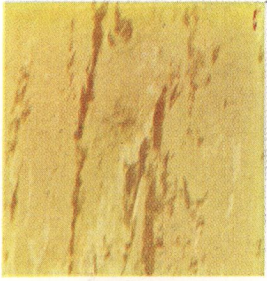
Anchor No. 510



Siesta No. 521



Lyric No. 522



Goldenrod  
No. D-927



Agate  
No. B-936



Seaspray Green  
No. D-911



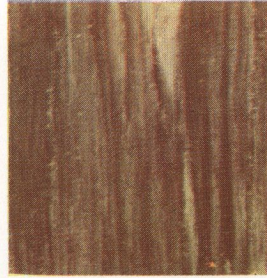
Pewter Gray  
No. C-944



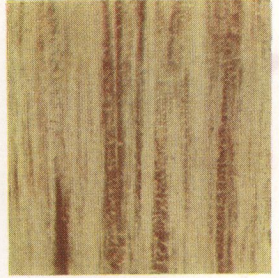
Jasper Green  
No. C-907

**TWO HANDSOME WOOD TONES IN  
ARMSTRONG ASPHALT TILE**

The rich woodtone stylings, shown at the right, can be used to create smart parquetry effects. Equally handsome in a floor with a single color or with both colors combined.



Dark Woodtone  
No. C-971



Light Woodtone  
No. D-970



Use one color wall-to-wall, or combine colors as you wish. Floor designs are almost limitless with Armstrong Asphalt Tile, since tiles are laid block by block.



This modern room shows how the handsome, custom-designed look of Armstrong Flagstone Asphalt Tile lends character and distinction to today's interiors.



**EASY INSTALLATION.** The shaped, precision-cut tiles fit into 18" x 18" "mortar" grids. No costly hand cutting is necessary . . .

installation is fast and economical. This view graphically demonstrates the revolutionary grid principle. When installed, the tiles along all sides of each grid interlock with the adjoining grid.

# Armstrong FLAGSTONE ASPHALT TILE

Here's a floor that fits right into the pattern of modern living . . . it has a free-flowing, "outdoor" look that's especially appropriate for ranch-type houses, enclosed porches, and open-plan living areas. It's suitable for installation in basements, too. "Flagstone"\* costs far less than a similar custom floor, hand-cut on the job. Since the pieces are factory-cut, they fit easily into position. Available in three color combinations.



No. 1081



No. 1082

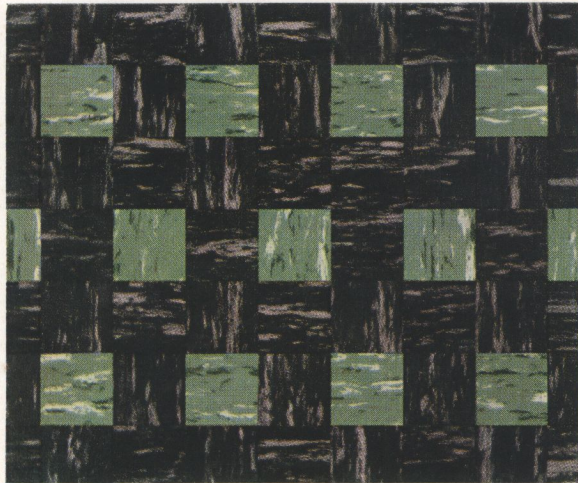
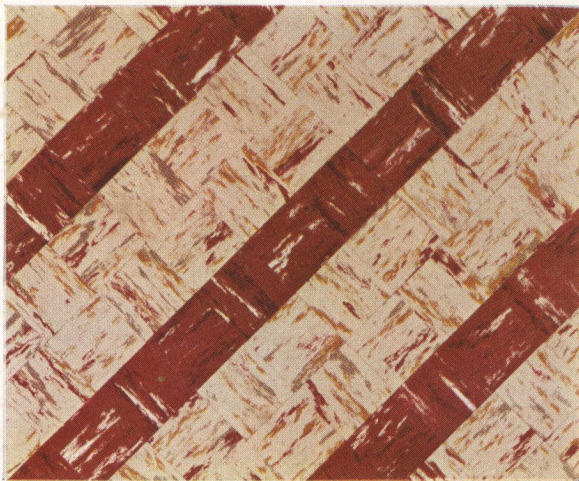
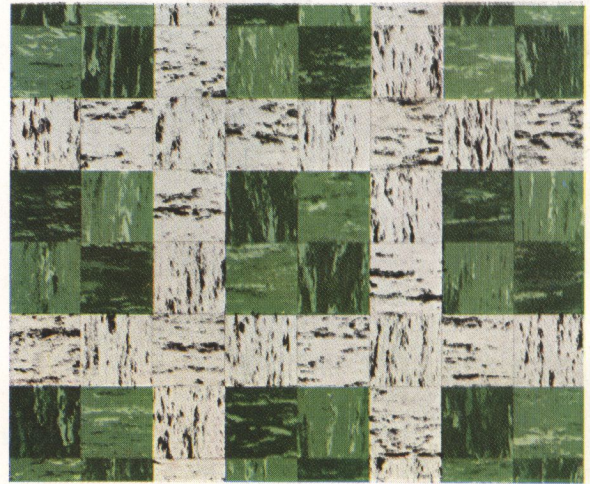


No. 1080

\*Trade-Mark

**TYPICAL DESIGN  
POSSIBILITIES**

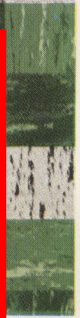
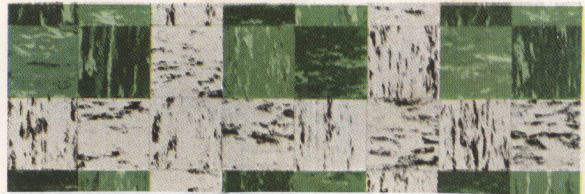
It's easy to create a distinctive floor with Armstrong Asphalt Tile. Countless designs are possible by combining the various colors. Since this floor is laid block by block, you get the advantages of custom styling at no extra cost. All colors in Armstrong Asphalt Tile have been especially styled so that they harmonize with each other when combined in floor designs.



**PIERSOL COMPANY, INC.**  
24 EAST KING ST.  
LANCASTER, PA. PHONE 6251

TYPICAL DESIGN  
POSSIBILITIES

It's e  
strong  
possil  
this t  
advar  
All co  
espec  
each



PIERSOL COMPANY, INC.  
24 EAST KING ST.  
LANCASTER, PA. PHONE 6251