

Construction Techniques Ltd has been manufacturing Drossbach duct locally in New Zealand for more than 40 years. Drossbach is used as a duct former for a variety of precast and cast-in-situ concrete work including:

- Precast connections
- Service penetrations
- Formers for starter bars
- Post-tensioning ducts

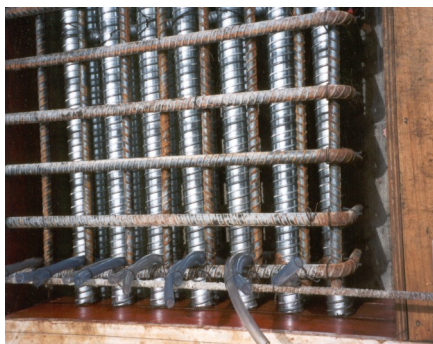


The semi-rigid metal duct is strong and durable for casting into concrete and is easily tied into position adjacent to reinforcing steel. Standard grout injection tubes, grout vents or blanked ends can be supplied on request.

Key Features of Drossbach

- Fabricated from 0.30mm thick galvanised strip steel
- Corrugated profile
- Cut to specific lengths on request
- Grout vent tubes and blanked ends on request
- Standard length 6.0m

Drossbach duct is manufactured in Christchurch and distributed throughout New Zealand.



Available Sizes	
Internal Dia. mm	Outside Dia. over ribs mm
33	38
36	41
39	44
42	47
45	50
48	53
51	56
54	59
57	61
60	67
63	70
66	73
69	76
72	79
75	82
78	85
81	88
85	92
90	97
95	102
102	107
107	114