

CLICK ANYWHERE on THIS PAGE to RETURN to FIBERBOARD SHEATHING at [InspectAmedia.com](https://www.inspectapedia.com)



Build On Our Knowledge™

INSULATION SELECTOR GUIDE



Whatever Your Insulating Needs May Be... Celotex Has Got You Covered!

Celotex, the producer of the world's finest insulation products, takes great pride in the quality and value of its entire line of foam insulations for residential and commercial constructions.



Whether you need a foam sheathing, insulation board or have special needs in a product for a particular commercial or residential roofing application, Celotex offers the best solutions for advanced insulation requirements, plus standard favorites for maximum energy savings.

From conserving heat in the frigid North to keeping air conditioning bills under control in the heat of the South, Celotex has the right product for every situation. Quite simply, when it comes to saving energy...Celotex has all your insulation needs covered.

PRODUCTS FOR TODAY'S DISCERNING MARKET

Celotex is continually striving to deliver even higher R-values through new and improved chemistries for foam board cores and is developing even more efficient and stronger facers for these products.

Delivering superior insulation performance in the thinnest profiles possible, these products can save money in design, construction, and long-term building performance. Furthermore, Celotex products also make it easy to comply with all the new energy regulations.

Celotex foam insulations are tough, water and vapor resistant. They fight heat transfer, have broad operating temperatures, better fire performance than styrene and are not affected by solvents or ultraviolet light.

CONSUMER CONFIDENCE

Specify and use these products with the highest confidence. Celotex has 75 years of experience in the insulation industry (over 25 years in foam insulation products).

Celotex is the innovator and recognized leader in developing and producing high performance polyisocyanurate insulations. These products are composed of extremely fine, closed cells encapsulating the blowing agents that fight heat flow and remain within the product for as long as the insulation is intact. All high performance foam insulation board products lose insulation value as they age. This aging process can normally take up to five years after which Stabilized or virtually constant R-values are realized.

Celotex publishes "Stabilized" R-values for its building insulations which represent the products as fully aged based on accelerated tests. Celotex publishes "Conditioned" R-values for its roofing insulations. No matter how major or minor your construction projects, Celotex foam insulation products can play key roles in achieving lasting energy savings. You can rest assured that the R-values specified with Celotex insulations will remain the same for years to come.

SELECTING "THE VERY BEST"

Use this product selector as a quick reference guide to Celotex insulations, their recommended uses, size, R-values, third party inspections and plant availability.

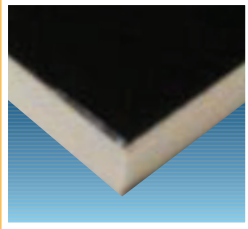
For additional information or detailed facts on any of the products listed in this guide, please contact your Celotex representative or press your touchtone phone Toll Free: 1-800-CELOFAX (235-6329) for technical data to be transmitted directly to your fax machine.

Note: R means resistance to heat flow. The higher the R-value the greater the insulating power. Also, savings vary. Ask your seller for the fact sheet on R-values.



Celotex Building Insulations

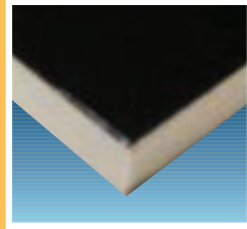
PRODUCTS AT A GLANCE



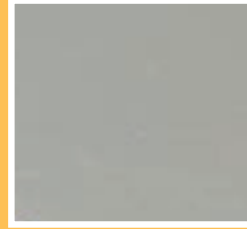
SUPER TUFF-R®



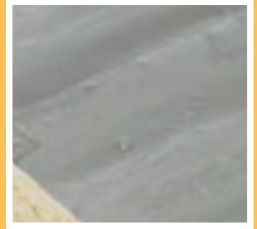
TUFF-R®



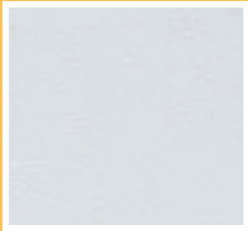
SUPER TUFF-R®
COMMERCIAL



TUFF-R®
COMMERCIAL



THERMAX®



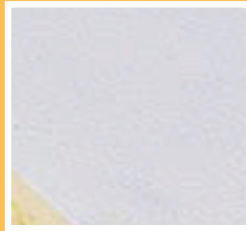
THERMAX®
LIGHT DUTY



THERMAX®
HEAVY DUTY



THERMAX®
HEAVY DUTY PLUS



THERMAX®
AG-THERM



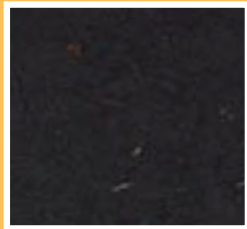
STURDY-R™



VALUE-R™



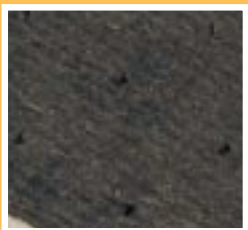
QUIK-R™



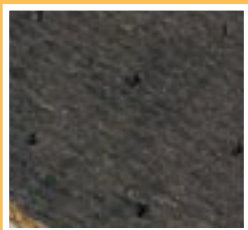
REGULAR
Insulation Sheathing

Celotex Roofing Insulations

PRODUCTS AT A GLANCE



HY-THERM™ AP™



HY-THERM™
COMPOSITE™



HY-THERM™
NAIL LINE™



CELO-VENT™



FIBERBOARD
ROOF INSULATION



SELECTOR GUIDE



Super Tuff-R®, Tuff-R®, Thermax®, Quik-R™ and Sturdy-R™ carry a 15 Year Limited Warranty For Thermal Resistance. Consult Celotex for details.

PRODUCT & DESCRIPTION

Tuff-R® Insulating Sheathing

A patented high performance polyisocyanurate foam core with these options:

Super Tuff-R: Two three-ply poly/aluminum foil facers laminated to the core. Resulting in unsurpassed durability. One facer is painted black. The other facer is radiant barrier quality reflective foil.

Tuff-R: Radiant barrier quality aluminum foil facers both sides. (One side reinforced.) Available from 7/8" to 1" thick.

Tuff-R Commercial: A polyisocyanurate foam board insulation with reflective/radiant barrier quality aluminum foil facers on both sides.

Super Tuff-R Commercial: Two three-ply poly/aluminum foil facers laminated to the core. Resulting in unsurpassed durability. One facer is painted black. The other facer is radiant barrier quality reflective foil.

Thermax® Sheathing

A polyisocyanurate foam core with unique glass fiber reinforcement and solid aluminum foil facers on both sides. This reinforcement, along with chemical modifications, contributes to improved fire performance and enhanced dimensional stability. Available in standard widths of 16", 24" & 48". Lengths from 4' to 40' (8', 9' & 10' standard).

Thermax® Insulation/Finish Board for Exposed Interior Applications

The same core as Thermax Sheathing with the exception that one side is faced with foil and the other side is faced with White Acrylic Coated Embossed Aluminum for a decorative effect in a choice of thicknesses for strength and durability: Heavy Duty Plus (16.5 mil facer), Heavy Duty (4 mil facer), Light Duty (1.25 mil facer). Ag® Therm primarily for agricultural buildings (1.25 mil facer). Available in standard sizes of 4' x 8' and 4' x 10'. Custom lengths available to 40'.

Sturdy-R® Insulating Sheathing

Consists of Celotex manufactured proprietary fiber glass facers which are faced with space-age resins with polyisocyanurate insulation core on front boards of exceptional strength. Available in 4' x 8' and 4' x 9' sizes.

Value-R® Insulation Board

Patented polyisocyanurate foam core with radiant barrier quality reinforced aluminum foil facers on both sides. Available in 4' x 8' and 4' x 9' sizes.

Quik-R® Wall Insulation for Exterior Insulation Finish Systems (EIFS)

This product consists of a rigid polyisocyanurate foam core insulation faced with special coated glass fiber facers. Available in 4' width in standard lengths of 8', 9', 10' and 12'. Custom lengths available.

Regular Insulation Sheathing

Produced from cellulose interlaced fiber bond with natural binders. Manufactured from Sugar cane by-product called bagasse, recovered wood chips and consumer newspaper. Available in 4' width in standard lengths of 8' and 9'.

RECOMMENDED USES

Concealed use in residential or commercial construction having an interior finish of a minimum 1/2" gypsum board or equivalent thermal barrier. Corner bracing required in new frame construction. Designed primarily as a residential or commercial exterior sheathing insulation with many secondary uses. When choosing insulation for any reason please consider the use of Tuff-R for truly superior performance. Tuff-R (up to 1") is approved by the model codes for use in gable ends and crawl spaces without a thermal barrier.

TUFF-R MUST NOT BE LEFT EXPOSED.

A high performance insulating sheathing for residential or commercial construction, interior or exterior basement application. Especially appropriate for time-rated assemblies. Corner bracing required in new frame construction.

Exposed wall and/or ceiling insulation in agricultural, commercial, and industrial buildings, such as factories, warehouses, farm buildings, retail establishments, cold storage structures, and similar facilities.

Residential or commercial construction having an interior finish of a minimum 1/2" gypsum board or equivalent thermal barrier. Corner bracing required in new frame construction. Sturdy-R (up to 1") is approved by the model codes for use in gable ends and crawl spaces without a thermal barrier.

STURDY-R MUST NOT BE LEFT EXPOSED.

Residential, commercial or roof construction having an interior finish of a minimum 1/2" gypsum board or equivalent thermal barrier. Corner bracing required in new frame construction.

VALUE-R MUST NOT BE LEFT EXPOSED.

Recommended for use in wood frame, masonry, or steel stud construction as a substrate for EIFS. It must be installed with 1/2" gypsum board or its equivalent thermal barrier interior or finish. Quik-R (up to 1") is approved by the model codes for use in gable ends and crawl spaces without a thermal barrier.

QUIK-R MUST NOT BE LEFT EXPOSED.

Designed for use as an insulating sheathing for frame walls under exterior finishes such as lap and panel siding, stucco, masonry veneer and shake shingle products.

THICKNESSES/R-VALUES*

TUFF-R and SUPER TUFF-R

Nominal Board Thickness (in; (mm))	1/2 (12.7)	5/8 (15.9)	3/4 (19.1)	1 (25.4)	1 1/4 (31.8)	1 3/8 (34.9)	1 1/2 (38.1)	1 3/4 (44.5)	1 7/8 (47.6)	2 (50.8)
Stabilized R-value ¹	3.6	5.0	5.6	7.2						
System R-value ²	6.4	7.8	8.4	10.0						

TUFF-R Commercial

Stabilized R-value ¹	5.0	3/4" (8.0)	10.0	12.0	14.4	16.0
System R-value ²	7.8	8.4	10.8	12.8	14.8	18.8

SUPER TUFF-R Commercial

Stabilized R-value ¹	5.0	7.2	10.0	10.8	12.0	14.4
System R-value ²	7.8	10.0	12.8	13.6	14.8	17.2

Stabilized R-values @ 75°F (24°C) mean temperature determined in accordance with ASTM C236/C538. Consult Celotex for R-values at other temperatures. System R-value is the total R-value achieved when the bright aluminum foil surface is installed next to 3/4" air space in a wall. The product R-value is then added to the air space R-value of 2.77 (rounded 2.8) to provide the system R-value, per ASHRAE Handbook Fundamentals.

Nominal Board Thickness (in; (mm))	1/2 (12.7)	3/4 (19.1)	1 (25.4)	1 1/4 (31.8)	1 1/2 (38.1)	2 (50.8)	2 1/2 (63.5)	2 3/4 (69.8)	3 (76.2)	3 1/2 (88.9)	4 (101.6)
Stabilized R-value ¹	3.6	5.4	7.2	9.0	10.8	14.4	18.0	19.8	21.6	25.2	28.8
System R-value ²	6.4	8.2	10.0	11.8	13.6	17.2	20.8	21.8	22.6	24.4	28.0
3											32.8

Stabilized R-values @ 75°F (24°C) mean temperature determined in accordance with ASTM C236/C538. Consult Celotex for R-values at other temperatures. System R-value is the total R-value achieved when the bright aluminum foil surface is installed next to 3/4" air space in a wall. The product R-value is then added to the air space R-value of 2.77 (rounded 2.8) to provide the system R-value, per ASHRAE Handbook Fundamentals.

Nominal Board Thickness (in; (mm))	1/2 (12.7)	3/4 (19.1)	1 (25.4)	1 1/4 (31.8)	1 3/4 (44.5)	2 (50.8)	2 1/4 (57.2)	2 3/4 (63.5)	3 (76.2)	
Stabilized R-value	3.6	5.4	7.2	9.0	10.8	12.6	14.4	16.2	18.0	
System R-value	6.4	8.2	10.0	11.8	13.6	15.4	17.2	19.0	20.8	
3										21.6

Stabilized R-values @ 75°F (24°C) mean temperature determined in accordance with ASTM C236/C538. Consult Celotex for R-values at other temperatures and for system R-values.

Nominal Board Thickness (in; (mm))	1/2 (12.7)	3/4 (19.1)	7/8 (22.2)
Stabilized R-value	3.0	4.0	5.0

Stabilized R-values @ 75°F (24°C) mean temperature determined in accordance with ASTM C236/C538. Consult Celotex for system R-values.

Nominal Board Thickness (in; (mm))	2 (50.8)	2 1/4 (63.5)	2 3/4 (69.8)	3 (76.2)	3 1/4 (82.6)	3 3/4 (88.9)	4 (101.6)
Stabilized R-value	14.4	16.0	18.0	19.0	21.6	24.0	25.6
System R-value	17.2	19.0	21.6	22.6	25.2	28.0	30.0

Stabilized R-values @ 75°F (24°C) mean temperature determined in accordance with ASTM C236/C538. Consult Celotex for system R-values.

Nominal Thickness (in; (mm))	5/8 (15.9)	3/4 (19.1)	1 (25.4)	1 1/2 (38.1)
Stabilized R-value	3.5	4.2	5.6	8.4
System R-value	6.3	7.4	9.2	11.2

Stabilized R-values @ 75°F (24°C) mean temperature determined in accordance with ASTM C236/C538. Consult Celotex for system R-values.

Nominal Board Thickness (in; (mm))	1/2 (12.7)
R-value	1.2

R-values based on ASTM C518 testing @ 75°F (24°C) mean temperature. Consult Celotex for system R-values.

COMPLIANCES

Complies with ICC, BOCA, ICBO, SBCCI, HUD/FHA and Federal Specification HHH-1972/1, Class 1, Type I, Class 2, ASTM C 1289, Type I, Class 1, Class 2. Tuff-R® is certified for thermal properties by NAIMB Research Center.

Thermax® is available at these Celotex plants: Charleston, Pennsylvania, Texasarkana and Tracy.

Thermax® Insulation/finish board is available at these Celotex plants: Charleston, Pennsylvania, Texasarkana and Tracy.

Sturdy-R® is available at these Celotex plants: Charleston, Pennsylvania and Tracy.

Value-R® is available at these Celotex plants: Elizabethtown and Tracy.

Quik-R® is available at these Celotex plants: Charleston, Pennsylvania and Tracy.

Regular Insulation Sheathing is available at these Celotex plants: Charleston, Marrero and Sunbury Plants.

* R = F • ft² • h/Btu; RSI = °C • m² /W. Calculation Note: RSI = R-value x 0.1761.

CELOTEX BUILDING INSULATIONS

SELECTOR GUIDE

PRODUCERS OF THE WORLD'S FINEST INSULATION PRODUCTS™



Build On Our Knowledge

PRODUCT & DESCRIPTION

Hy-Therm™ AP* Roof Insulation

A foam insulation board consisting of a thermally efficient, closed cell, polyisocyanurate foam core and specially formulated organic/inorganic facers. Available in sizes of 4' x 4' and 4' x 8'.

Hy-Therm™ AP* is suitable for use as a roof insulation under gravel surfaced, hot bitumen, fully mopped built-up roofing systems and most single-ply roofing systems.

RECOMMENDED USES

Recommended for use in Loose-Laid and Ballasted Single-Ply systems, Mechanically Fastened Single-Ply systems, Fully Adhered Single-Ply systems (EPDM only) and Built-up and Modified Bitumen systems.

Nominal Thickness in: (mm)	1.0 (25)	1.1 (28)	1.3 (33)	1.4 (36)	1.5 (38)	1.6 (41)	1.8 (46)	1.9 (48)	2.0 (51)	2.1 (53)	2.2 (56)	2.3 (58)
Conditioned R-Value ¹	6.0	6.7	8.3	9.0	10.0	10.8	12.5	13.2	14.3	14.8	15.6	16.7
Nominal Thickness in: (mm)	2.4 (61)	2.5 (64)	2.7 (69)	2.9 (74)	3.0 (76)	3.2 (81)	3.3 (84)	3.5 (89)	3.8 (97)	4.0 (102)		
Conditioned R-Value ¹	17.3	18.2	20.0	21.0	21.7	23.3	24.1	25.8	28.2	30.2		

¹ Conditioned R-Values of this product were determined by ASTM C518 in accordance with the conditioning procedure outlined in PMA Technical Bulletin Number 101.

COMPLIANCES / R-VALUES*

Complies with ICC, BOCA, ICBO, SBCCI, HUD/FHA and Federal Specification HH-1972/Gen. I, ASTM C 1289, Type II, UL Classified, Factory Mutual Approved.

Hy-Therm™ AP* is available at these Celotex plants: Elizabethtown and Tracy.

Hy-Therm™ Composite* Roof Insulation

A composite board consisting of a polyisocyanurate foam core, which provides high thermal efficiency, integrally bonded to 1/2" Celotex® High Density Fiberboard Roof Insulation on one side and an organic/inorganic facer sheet on the other. Available in sizes of 4' x 4' only.

Recommended for use in Loose-Laid and Fastened Single-Ply systems, Mechanically Fastened Single-Ply systems, Fully Adhered Single-Ply systems (EPDM only) and Built-up and Modified Bitumen systems.

Nominal Thickness in: (mm)	1.5 (38)	1.8 (46)	2.1 (53)	2.3 (58)	2.5 (64)	2.7 (69)	3.0 (76)	3.5 (89)	4.0 (102)
Conditioned R-Value ¹	7.2	9.6	12.1	13.8	15.2	16.7	19.5	27.0	

¹ Conditioned R-Values of this product were determined by ASTM C518 in accordance with the conditioning procedure outlined in PMA Technical Bulletin Number 101.

Complies with ICC, BOCA, ICBO, SBCCI, HUD/FHA and Federal Specification HH-1972/Gen. I, ASTM C 1289, Type IV, UL Classified, Factory Mutual Approved.

Hy-Therm™ COMPOSITE* is available at these Celotex plants: Elizabethtown and Tracy.

Hy-Therm™ NAIL LINE* Roof Insulation

Consists of a time-proven, polyisocyanurate foam core, securely bonded to a top layer of durable 7/16" oriented structural board (OSB) and an organic/inorganic facer sheet on the other side. Incorporating all the features of our other polyisocyanurate roof insulations this product features insulating value and durability combined, maximum compressive strength and high resistance to traffic abuse and maximum moisture resistance. Available in sizes of 4' x 4' and 4' x 8'.

Recommended for use in shake, slate, tile, shingle or metal roof application over decks that will accept mechanical fasteners on sloped residential or commercial roofs, subject to the requirements of the roofing manufacturer.

Nominal Thickness in: (mm)	1.5 (38)	2.0 (51)	2.4 (61)	3.0 (76)	3.2 (81)	3.5 (89)	4.0 (102)
Conditioned R-Value ¹	6.6	10.7	14.3	18.9	20.5	23.0	27.0

¹ Conditioned R-Values of this product were determined by ASTM C518 in accordance with the conditioning procedure outlined in PMA Technical Bulletin Number 101.

Complies with ICC, BOCA, ICBO, SBCCI, HUD/FHA and Federal Specification HH-1972/Gen. I, ASTM C 1289, Type V, UL Classified, Factory Mutual Approved.

Hy-Therm™ NAIL-LINE* is available at these Celotex plants: Elizabethtown and Tracy.

Celo-Vent™ Insulated Shingle Deck

A factory assembled ventilated (nail-base) roof insulation system, which allows for insulation outside the structural deck. This is especially useful with cathedral ceilings or where attic space does not permit insulating. Celo-Vent consists of thermally efficient, closed cell, polyisocyanurate roof insulation board, and 7/16" APA or TECO rated OSB, with 2" shiplap, separated by 1" x 3" wide fiberboard strips, set 16" o.c. to provide venting. Available in 4' x 8' boards. Available with uni-directional or cross ventilation.

Celo-Vent™ is suitable for use under asphalt shingles and other nailable roofing systems. Celo-Vent must be used along with continuous eave and ridge vents.

Nominal Product Thickness in: (mm)	2.5 (64)	3.5 (89)	4.5 (114)	5.0 (127)	5.5 (140)
Nominal Core Foam Thickness in: (mm)	1.0 (25)	2.0 (51)	3.0 (76)	3.5 (89)	4.0 (102)
Conditioned Foam R-Value ¹	6.0	14.3	21.7	25.8	30.2
Conditioned Product R-Value ¹	7.1	15.4	22.8	26.9	31.3

¹ Conditioned R-Values of this product were determined by ASTM C518 in accordance with the conditioning procedure outlined in PMA Technical Bulletin Number 101.

Celo-Vent™ is available at these Celotex plants: Elizabethtown and Tracy.

Regular and High Density Fiberboard Roof Insulation

A uniform density non-asphaltic board with good insulating properties. It is composed of inorganic fibers produced by chemical fiberizing, matted for fibrous strength and moisture resistance. The board is further treated on the top face to reduce asphalt bitumen absorption. This product is also available in cut six sides. Available in sizes of 2' x 4', 4' x 4' and 4' x 8'.

For use under loose-laid and ballasted or mechanically fastened single-ply roofing systems. It can also be used as general purpose roof insulation under conventional built-up and modified bitumen roofing systems, and as a separation board for roofs in reroofing applications.

Nominal Thickness in: (mm)	1/2 (13)	3/4 (19)	1 (25)	1 1/2 (38)	2 (51)
R-Value ¹	1.4	2.1	2.8	4.2	5.6

¹ R-Value based on ASTM C518 testing @ 75°F (24°C) mean temperature.

Complies with ICC, BOCA, ICBO, SBCCI. Manufactured to meet the following: ASTM C 208, Type II, Grade 1 & 2. ANS/ASHRAE A 194.1, Type II, Class 1 & 2. UL Classified, Factory Mutual Approved.

Celotex Regular and High Density Fiberboard is available at these Celotex plants: Marrero and Sunbury.

* R = F + t × h / Btu; RSI = °C · m / W Calculation Note: RSI = R-value × 0.1761.



Characteristics, properties or performance of materials manufactured by Celotex Corporation herein described are derived from data obtained under controlled test conditions. Celotex makes no warranties, express or implied, as to their characteristics, properties or performance under any variations from such conditions in actual construction. Celotex Corporation assumes no responsibility for the effects of structural movement. ANY DEVIATION FROM THESE INSTRUCTIONS VOIDS ALL WARRANTIES INCLUDING IMPLIED WARRANTIES OF MERCHANTABILITY AND FITNESS FOR A PARTICULAR PURPOSE.

BEFORE USING THESE INSULATION PRODUCTS, REFER TO CELOTEX PRODUCT LITERATURE FOR DETAILS, APPLICATION INSTRUCTIONS AND WARNINGS

Celotex, Thermax, Tuff-R, Quik-R, Sturdy-R, Value-R, Hy-Therm, AP, Composite, Nail-Line, Tapered and Celo-Vent are trademarks of Celotex Corporation.



Build On Our Knowledge™

CELOTEX CORPORATION
POST OFFICE BOX 31602
TAMPA, FLORIDA 33631

1-800-CELOTEX
www.celotex.com

Celotex Regional Sales Offices, Manufacturing Plants and Export Sales

Regional Sales Offices

Atlanta, GA
2700 Cumberland Parkway
Suite 550
Atlanta, Georgia 30339
(770) 436-6000
800-952-9978
(770) 438-8954 Fax

Chicago, IL
Touhy Office Plaza
1400 E. Touhy Avenue
Suite 225

Des Plaines, Illinois 60018
(847) 298-1929
(847) 298-1943
800-851-6021
(847) 803-1246 Fax

Cincinnati, OH
9403 Kenwood Rd.
Suite B201
Cincinnati, Ohio 45242
(513) 792-8210
(513) 792-8230
800-543-8638
800-543-8676
(513) 792-8223 Fax

Dallas, TX
13800 Montfort Dr.
Suite 350
Dallas, Texas 75240-4384
(972) 661-1406
(972) 404-0926
800-523-4684
800-356-9062
(972) 661-1835 Fax

Oakland, CA
6400 Stevenson Blvd.
Fremont, California 94538
(510) 490-0491
(510) 656-7663
800-227-1216
800-227-0374
800-790-3347 Fax

Philadelphia, PA
996 Old Eagle School Rd.
Wayne, Pennsylvania 19087
(610) 964-8047
800-495-6192
(610) 964-7924 Fax

Manufacturing Plants

1255 North 5th Street
Charleston, Illinois 61920
(217) 348-8151
800-637-2044
(217) 345-7741 Fax

1500 John Tipton Blvd.
Pennsauken, New Jersey
08110
(609) 663-2626
800-257-5313
(609) 663-1198 Fax

P.O. Box 5884
Texarkana, Arkansas 75505
(870) 774-3685
800-THERMAX
(870) 772-5839 Fax

400 West Gandy Dancer Dr.
Tracy, California 95376
(209) 836-4440
800-992-8117
(209) 832-8944 Fax

901 W. Park Road
Elizabethtown, KY 42701
(270) 769-3391
(270) 796-0191 Fax

Urbandale & 4th Street
Marrero, LA 70072
(504) 341-5671
(504) 340-1557 Fax

1400 Susquehanna Ave.
Sunbury, PA 17801
(570) 286-5831
(570) 286-4004 Fax

International Sales

Tampa, FL 33631
(813) 873-4212
(813) 873-4287 Fax

NOTICE: The information in this document is subject to change without notice. Celotex assumes no responsibility for any errors that may inadvertently appear in this document.