

## RESTORING YOUR FALCON URINAL

If your Falcon Waterfree® urinal is not performing as well as when it was originally installed, the checklist below will help you determine any potential corrective actions. If you are having odor issues, refer to "Restroom Odors - Sources & Causes" to help determine a possible solution.

### ☐ IS A NON-FALCON CARTRIDGE BEING USED?

Non-Falcon cartridges may cause negative performance issues in a Falcon urinal.

The Falcon system (urinal, housing and cartridge) has been tested and complies with plumbing code and standards as a complete system. Non-Falcon cartridges usually have not been tested and may not comply with plumbing codes and standards for use in a Falcon urinal. Use of non-Falcon cartridges in a Falcon Waterfree certified system invalidates Falcon warranty coverage, can impair performance and may invalidate your property insurance coverage.

### ☐ ARE THERE LEAKS OR AN IMPROPER CONNECTION?

Visually inspect the underside of the urinal for any leaks around the housing connection to the urinal.

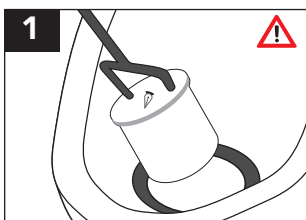
- If a leak is detected, replace housing or replace entire urinal as appropriate.

Visually inspect the connection to the drain line for any leaks and confirm proper installation. A urinal not installed correctly according to manufacturer's instructions may experience odor issues and/or leaks.

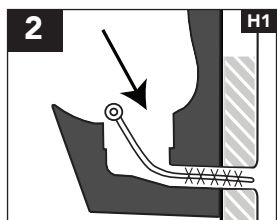
- If not connected to the drain line correctly, follow installation instructions and reinstall correctly.

### ☐ WITH CARTRIDGE REMOVED, DOES WATER FLOW FREELY DOWN THE HOUSING INTO THE DRAIN LINE?

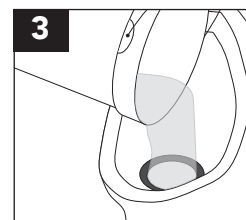
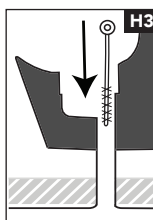
1. Remove the cartridge and clean the housing and tailpipe.
2. Use a 1.5-inch diameter nylon brush with Falcon Foam Housing Cleaner for optimal results.
3. With housing cleaned, pour 2-3 gallons of water to determine flow.
  - If water flows freely without restriction and no water remains in the housing, no action is required.
  - If water flows freely without restriction but water remains in the housing, re-install the urinal to achieve proper slope.
  - If water does not flow freely and goes slowly down the housing into the drain line, a blockage may be in the drain line. Remove and reinstall the urinal to properly prepare and clean the drain line and achieve proper slope.
  - Please see reverse side for more information and trouble shooting on adjusting slope.



Lift and tilt cartridge to drain all free liquids then spray Falcon Foam Cleaner into housing.



Scrub the housing and deep inside of the tailpipe with a long 1.5-inch diameter nylon brush.



Flush housing with 5 gallons (20 liters) of hot soapy water.

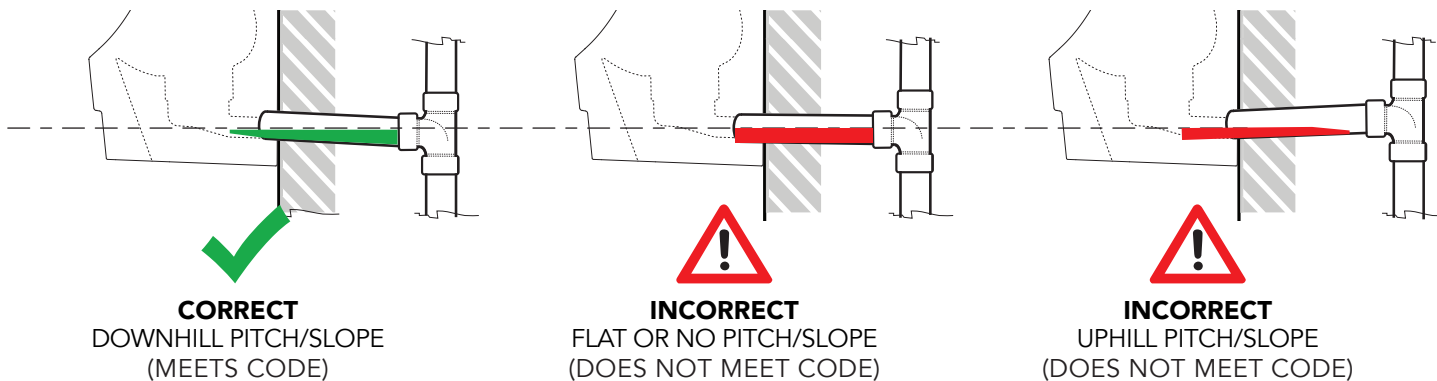


**CAUTION** After removing cartridge from housing, certain naturally occurring but **potentially hazardous sewer gases** may escape through the opening until re-installed properly. If replacement cartridge will not be re-installed immediately, place a rag or paper towels into opening to block any sewer gases. Remove the paper towels or rag prior to inserting new cartridge. Alternatively, use Falcon Foam Housing Cleaner to both clean housing and reduce any outflow of sewer gases through open housing during cartridge change. **Never smoke, have an open flame, or place your nose or mouth near waterless urinal housings into which a cartridge is not yet properly installed.** You also can wear a breathing mask when removing or installing any waterless urinal or cartridge to reduce potential exposure to any such gases.

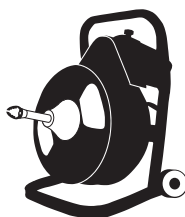
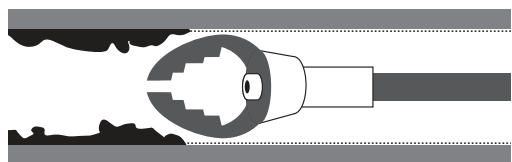
## ☐ ARE URINALS INSTALLED CORRECTLY WITH PROPER SLOPE AND CLEAN DRAIN LINES?

### PLUMBING CODE REQUIREMENTS

2" pipe requires a minimum fall (slope) of 1/4" per foot (2% grade)



### CLEAN THE DRAIN LINE AND CONFIRM NO COPPER DWV



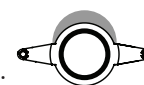
**IMPORTANT** Use a drain machine to remove build up inside pipes. Clean as far into the line as possible, up to 25 feet, to remove debris.

**IMPORTANT** Ensure there is no copper piping. DO NOT under any circumstances install Falcon Waterfree urinals in a restroom with copper DWV.

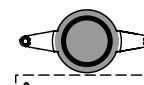
### ADJUST PITCH/SLOPE

1. Check if slope is correct by removing the cartridge and pouring water into the housing unit. If there is any standing liquid, please follow the next steps.
2. If necessary, cut out a small area of the wall above the nipple.
3. Raise the nipple enough to achieve proper pitch, then brace with a mending plate\*.
4. Re-check for pitch/slope using clear inspection disk to verify if the adjustment is sufficient.
5. Use a building code approved caulking to seal around the drain nipple.

\*Mending plates are a common solution for bracing drain lines. Use whatever method provides the best and most stable results for your application.



Cut away wall



Lift drain line & brace with mending plate

With the urinal installed properly and water flowing freely down the housing into the drain line, review and follow the Cleaning and Cartridge Change out Instructions. Instructional video is available at [www.FalconWaterfree.com](http://www.FalconWaterfree.com).

If you have any other concerns with your Falcon Waterfree urinals, please contact us directly at the number below or email us at [Service@FalconWaterfree.com](mailto:Service@FalconWaterfree.com).