

CLICK ANYWHERE on THIS PAGE to RETURN to BECKETT BURNERS & CONTROLS at InspectApedia.com

Beckett Oil Burner Parts

Oil Primary Controls - Interrupted Ignition



- Communications port enables the control to communicate with service instruments, security systems or data acquisition equipment
- Diagnostic LED indicates cad cell resistance and operational status
- Limited recycle and reset
- Ambient range from -40 to 150F

Type of Ignition	Pre-Purge	Post-Purge	Cross	Brand	Part Number
Interrupted	15 second	-	R7184B1032	Beckett	7456U
Interrupted	15 second	Selectable	R7184B1064	Beckett	7505P152M

Oil Primary Controls & Tool - Interrupted or Intermittent Ignition - GeniSys™



GeniSys™ Contractor

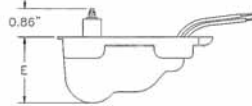
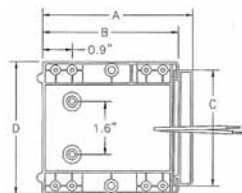
Tool Features:

- Continuous real-time cycle monitoring
- Continuous cad cell resistance reading
- Continuous AC line voltage readout
- Real-time error notification
- Customizable pre-time (valve-on delay) & post-time (motor off delay)
- 15 cycle history monitoring
- Low voltage operation
- Customizable lockout service message
- 5 year warranty

- 120 Vac primary safety control for residential and light commercial oil burners used in boiler, furnace and water heater applications
- Used with a suitable cad cell flame sensor to control the oil burner motor, igniter and optional solenoid valve
- 24 Vac thermostat inputs compatible with both on/off and power stealing thermostats
- 15 second lockout time
- Three status lights for system monitoring and diagnostics
- Two communications ports for adding alarm contacts, programming display and or future wireless communications
- Limited recycle and reset
- Welded relay protection with redundant motor relays
- Technician pump prime mode
- 5 Year Warranty

Type of Ignition	Pre-Purge	Post-Purge	Cross	Brand	Part Number
Interrupted or Intermittent	15 second	-	R7184B	Beckett	7505B1500U
Interrupted	15 second	2 minute	R7184P, R7184U	Beckett	7505P452MU
GeniSys™ Contractor Tool Portable diagnostic tool to program and troubleshoot GeniSys™ Oil Primary Controls. Screen shows current burner status, control timings and burner cycle history. Programming mode allows customization of both the pre-time and post-time settings. Backlit display, sealed pushbutton keypad				Beckett	52082U

Electronic Igniters With Baseplate



- Higher output voltage for better ignition, especially with cold oil
- Includes baseplate with terminals, gaskets and mounting hardware
- Adapts to multiple baseplates, even other vendors
- 20 kV peak rating guarantees quick and efficient ignition
- Moisture resistant, excellent heat dissipation & electrical insulation
- High temperature, high impact thermoplastic case material
- "Breakout" sections at the side and rear of case for lead wire exit
- UL recognized

Application	Base Plate Included	Input	Output Voltage	Output Current	Dimensions					Brand	Part Number
					A	B	C	D	E		
Beckett AFG	Beckett A / NX	120VAC, 35VA	6 kV RMS, 20 kV Peak	35 mA RMS	4.5"	4.1"	3.5"	4"	2"	Beckett	51771U
Beckett AFII	Beckett AFII									Beckett	51805U
Beckett S, SR, SF, CF500 & CF800	Beckett S									Beckett	51824U



Beckett Oil Burner Parts

Oil Pumps



- **Beckett's CleanCut™ Oil Pump** combines the clean burn benefits of a solenoid valve with the hefty lift capabilities of traditional oil pumps. UL & CUL certified

Description	Brand	Part Number
Beckett CleanCut™ Universal Replacement Pump Kit Must use with valve-on delay control OR Beckett Precision Delay (PD) Timer Cordset		
1 Stage, 3450 RPM, 6 GPH max	Beckett	2591U
1 Stage, 3600 RPM, 4 GPH max, 120V Coil Suction Height: One pipe 8' max, two pipe 14' max Includes PD Timer & Hardware	Beckett	2184404U
Two Stage, 3450 RPM, 4 GPH max, Suction Height: One pipe 8' max, two pipe 14' max Includes PD Timer & Hardware	Beckett	21941U
Suntec Pump Model #A2VA-7116		
1 Stage, 3450 RPM, RH, 3 GPH	Suntec	2460U

Miscellaneous Beckett Products

Product	Description	Fits Beckett Burner Model	Part Number
Head / Heat Shield	Firing Rate: 0.75 - 1.25 GPH	AF, AFG	F3
Coupling Kits	Pump Coupling	AF, AFG, NX	2454
	Pump Coupling	AFII	21437U
Adjustable Flange Kit	Set-Screw Flange - For mounting a retrofit chassis to an appliance	AF, AFG, SF	5432
Oil Line	6.5" Length	A, AF, AFG	5636
Electrode Kits	Without T Gauge or Extension Bars. Air Tube Length up to 9"	AF, AFG, AR, SF, and "F" Series	5780
	With T Gauge & Extension Bars. Air Tube Length up to 9"	AFG "M" Series	5940
	With T Gauge & Extension Bars. Air Tube Length up to 9"	AFII, FBX Style	51670U
Motors - PSC	1/7HP, 3450 RPM, 120 VAC	AFII	21444U
	1/7HP, 3450 RPM, 120 VAC	AF, AFG, NX, all "M" Flange	21805U
Flange Gasket	Square	Universal	31802
GeniSys™ Burner Control Terminal Base	Terminal Base only for A/C ready kit	All Models Using A GeniSys™ Burner Control	51970U
Oil Nozzles	0.50 capacity x 45B spray angle	AFG	21566108
	0.55 capacity x 45B spray angle	AFG	21566109

Beckett

**Call Davies For All
Your Beckett Oil Burner Replacement Parts!**



Oil Burner Electrodes & Ignitors

Electrodes

	Type E5-1M			
	Diameter	Insulator Length	Tip Diameter	Part Number
	7/16"	4"	1/8"	E5-1M4
	7/16"	4 1/2"	1/8"	E5-1M4-1/2
	7/16"	5"	1/8"	E5-1M5
7/16"	6"	1/8"	E5-1M6	

	Type E5-2M			
	Diameter	Insulator Length	Tip Diameter	Part Number
	9/16"	4"	3/32"	E5-2M4
	9/16"	5"	3/32"	E5-2M5
9/16"	6"	3/32"	E5-2M6	

	Type E5-3F			
	Diameter	Insulator Length	Tip Diameter	Part Number
9/16"	6"	1/8"	E5-3F6	

	Type E5-3M			
	Diameter	Insulator Length	Tip Diameter	Part Number
	9/16"	4"	1/8"	E5-3M4
	9/16"	4 1/2"	1/8"	E5-3M4-1/2
	9/16"	5"	1/8"	E5-3M5
	9/16"	6"	1/8"	E5-3M6
9/16"	8"	1/8"	E5-3M8	

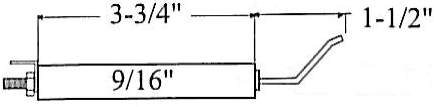
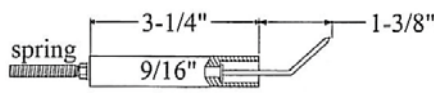
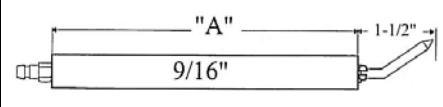
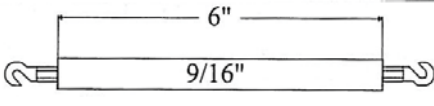
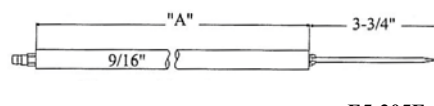
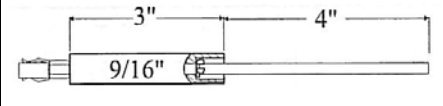
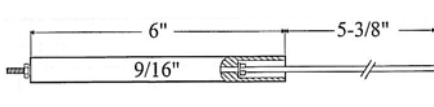
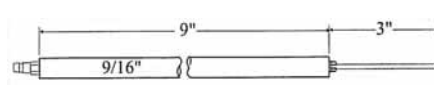
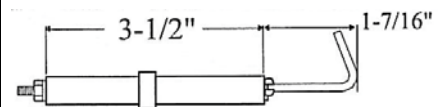
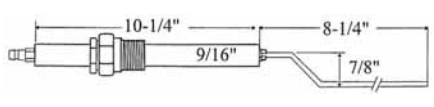
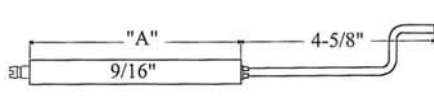
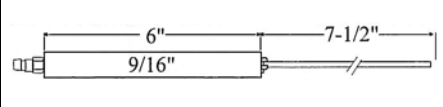
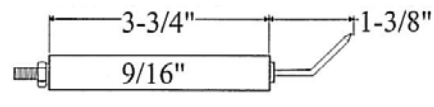
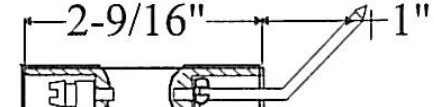
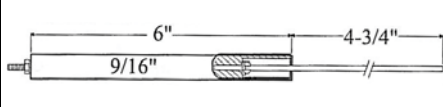
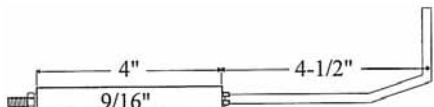
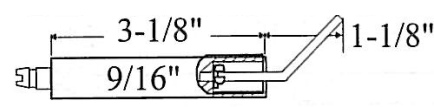
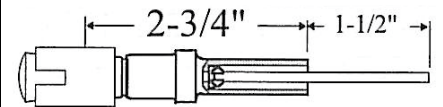
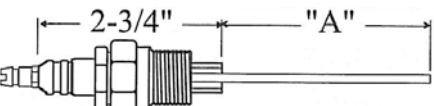
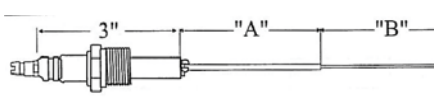
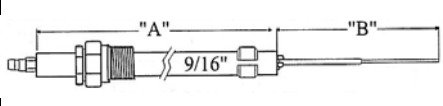
	Type E5-4M			
	Diameter	Insulator Length	Tip Diameter	Part Number
1/2"	4"	1/8"	E5-4M4	



***Davies Supplies All Your Electrode & Ignitor Needs
Call Davies Pros On Controls For Proper Application***

Oil Burner Electrodes & Ignitors

OEM Ignitors

 <p>Fits Beckett E5-151K</p>	 <p>Fits Beckett E5-151L</p>	 <p>Fits Caloroil / Lennox E5-181</p>
 <p>Fits Cleaver Brooks E5-203</p>	 <p>Fits Cleaver Brooks E5-205F E5-205L E5-205Q</p>	 <p>Fits Dravo E5-232A</p>
 <p>Fits Dravo E5-232M</p>	 <p>Fits Dravo E5-233</p>	 <p>Fits Economite E5-239C</p>
 <p>Fits Fulton Boiler E5-283B</p>	 <p>Fits Gordon Piatt E5-307S</p>	 <p>Fits Homestead E5-341A</p>
 <p>Fits International E5-348</p>	 <p>Fits Master Vibrator E5-393</p>	 <p>Fits Mid Continental E5-399G</p>
 <p>Fits Mid Continental E5-399H</p>	 <p>Fits Mid Continental E5-399N</p>	 <p>Fits Petro E5-468</p>
 <p>Fits Petro E5-468D</p>	 <p>Fits Superior E5-546F E5-546G</p>	 <p>Fits Superior E5-547B</p>

Oil Burner Electrodes & Ignitors

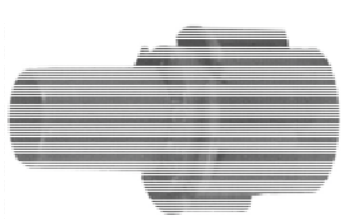
Buss Bars - Type F



- Flat brass with 3/16" clearance hole

Size	Part Number
6"	E9-TYPEF6
12"	E9-TYPEF12

Tools



Size	Part Number
Electrode Gauge	T100-220
Electrode Tip Bender - 5", pair	T100-230



Oil Burner Ignition Transformers

Universal Service Replacement Ignitor



- Comes complete with required hardware

Electronic Oil Ignitor - 120 Volt Primary 50/60 Hz, 17,500 Volt Secondary, 45mA

Manufacturer / Application	Fits	Ground	Brand	Part Number
Universal OMNI® Solid State Ignitor Baseless, mounts to previous plate	All Aero, Beckett, Wayne, Carlin, France, Webster, Weil McLain, Allanson	Mid Point	Allanson	2275U

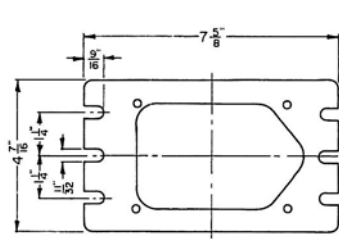
**Davies Carries A Full Line Of Allanson Ignitors,
Ignition Transformers, Base Plates, Parts & Accessories
Call Us for More Details!**



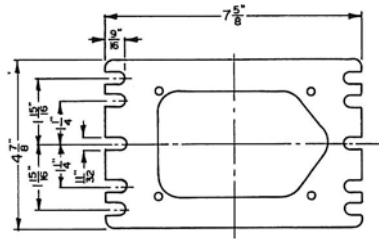
For Transformer Testers See Test Instruments

Oil Burner Ignition Transformers

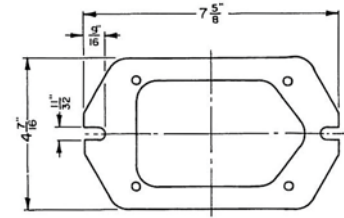
Interchangeable Base Plate Illustrations



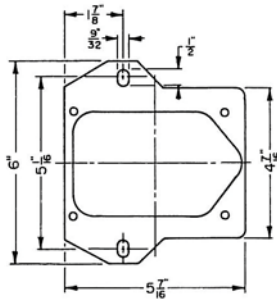
2501



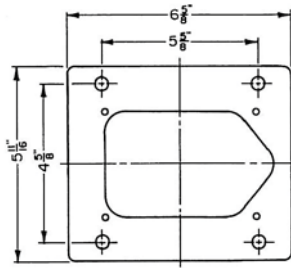
2502



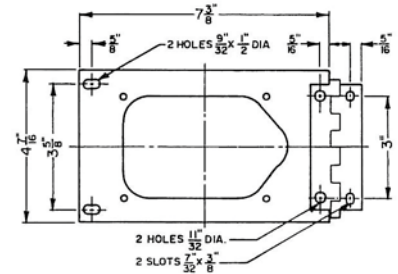
2503



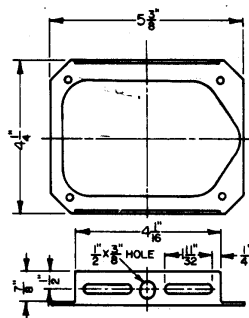
2506



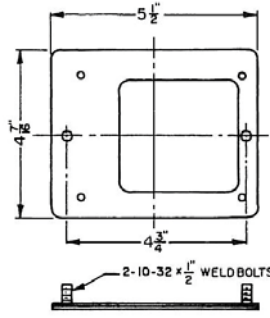
2507



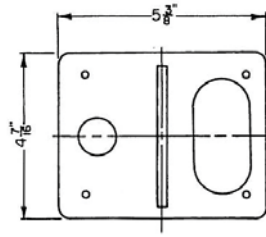
2517



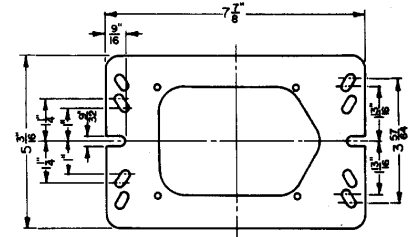
2523



2527



2528



2559

Base Plates		
Description	Brand	Part Number
For BT Series	Allanson	2501
For BT Series	Allanson	2502
For BT Series	Allanson	2503
For BT Series	Allanson	2506
For BT Series	Allanson	2507
For BT Series	Allanson	2517
For BT Series	Allanson	2523
For BT Series	Allanson	2527
For BT Series	Allanson	2528
For BT Series	Allanson	2559

Base Plates		
Description	Brand	Part Number
Aero	Allanson	2600
Beckett S	Allanson	2601
Wayne Hi Speed M/MH	Allanson	2602
Wayne E	Allanson	2603
Beckett A, AF	Allanson	2604
Carlin 99, 100, 101	Allanson	2605
Wayne Blue Angel	Allanson	2606

Oil Burner Controls

Protectorelay Oil Burner Control (Cad Cell Relay)



Honeywell



**White
Rodgers**

- Provides automatic, non-recycling control of an intermittent ignition oil burner system
- Controls oil burner, oil valve (if desired) and ignition transformer in response to call for heat
- Manual lever on safety switch insures burner shutdown during servicing
- Mounts to standard 4x4" junction box or onto burner housing

Type of Ignition	Ignition Rating	Safety Switch Timing	Replaces	Brand	Part Number
Intermittent	500VA in addition to burner motor load	30 Seconds	R8184G1179	Honeywell	R8184G4033
Intermittent	360VA	30 Seconds	R8184M (1002, 1036, 1069, 1077)	Honeywell	R8184M1051
Intermittent	360VA	30 Seconds	651 Series	White Rodgers	668-515

Protectorelay Oil Burner Stack Control



Honeywell

- One piece, stack-mounted oil burner primary control that cycles the burner on and shuts down the burner on flame loss or system malfunction
- Manual reset of safety switch required after ignition failure completely shuts of main burner
- Includes manual trip safety switch to assure burner shutdown during servicing
- Mount with flange for mounting on curved or flat surfaces

Type of Ignition	Ignition Rating	Safety Switch Timing	Controller	Brand	Part Number
Intermittent	360VA	75 seconds	2 or 3 wire	Honeywell	RA116A1063

Oil Burner Controls

Digital Oil Primary - Interrupted or Intermittent Ignition - Universal



Honeywell

Directs technician to source of ignition failure when detected by the control. Replace only the components you know are faulty!

- Line voltage, safety rated control for residential oil fired burners used in boilers, forced air furnaces and water heaters
- Controls fuel oil, senses flame, controls ignition spark and notifies through the EnciraCOM™ bus remote alarm circuit when in lockout
- When used with a cad cell flame sensor (C554A) it operates an oil burner, spark ignitor and optional oil valve
- Works with a 24 Volt or optional high voltage thermostat
- Can be used with both hydronic and forced air systems. When used with hydronic systems, line voltage switching Aquastat® Controllers normally provide for the starting and stopping of the combustion sequences. With forced air systems, both mechanical and electronic 24V thermostats control the combustion process
- Intended for use only on oil burning appliances which do not require pre-purge and post-purge as a safety related function
- 2 line LCD display
- Mounts on junction box on main burner
- Information Provided: Cycle status, cad cell reading in ohms, baseline system information provides averages for cad cell and ignition time, error history, total burner cycles, recycle data, ignition failure causes

Type of Ignition	Electrical Connections	Timing Safety Switch	Replaces	Brand	Part Number
Interrupted or Intermittent	Burner motor, oil valve, ignition, cad cell, limit, thermostat, alarm	Selectable 15, 30 or 45 seconds	Nearly all legacy Honeywell R7841 & R8184 as well as Beckett, Carlin and White Rodgers	Honeywell	R7284U1004

Cad Cell - Cadmium Sulfide - Flame Detector



- Photoconductive flame sensing device for sequencing oil burner systems
- On flame failure, light sensitive cadmium sulfide cell, in conjunction with flame sensing circuitry, causes the relay control to shutdown the main oil burner
- Glass-to metal hermetic seal in plug-in cell prevents deterioration by humidity, soot or oil fumes
- Used with Protectorelay oil primary controls and Kwik-Sensor model relays

Lead Length	Construction	Includes	Brand	Part Number
60"	2 Piece Model; Cell Plugs In	Interchangeable type A, B, E, J & P mounting brackets and a special oil line mounting bracket & two 1/4" 90° insulated quick connects	Honeywell	C554A1463
48"	Cell Plugs In	Straight Bracket	White Rodgers	956-35
Replacement Cad Cell Eye				
Replacement Cad Cell - 7.5 mA minimum sensitivity at 2 ft. candles, for Use In C554A1463 Flame Detector			Honeywell	120320
Replacement Cad Cell - 12.0 mA minimum sensitivity at 2 ft. candles, for Use In C554A1463 Flame Detector			Honeywell	130367

Oil Burner Controls

Damper Control - Two Wire, Two Way

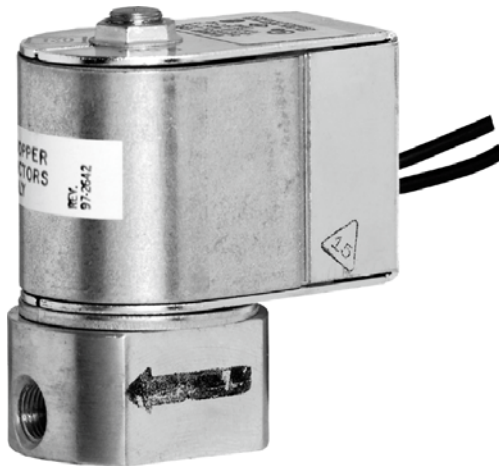


**White
Rodgers**

- Designed for use with solid fuels to control damper with 2 wire thermostat
- Compact size with conduit hub and loads connections
- All operating component accessible and comes with 61-1970 bracket
- Non-synchronous torque motor open dampers and remains energized to hold damper open

Electrical Rating	Timing Cycle	Type Operation	Brand	Part Number
.35A at 25V	Open 30 seconds - Close 20 seconds	Spring Return	White Rodgers	2070-5

Oil Shutoff Valves (Magnetic Valves)



Honeywell

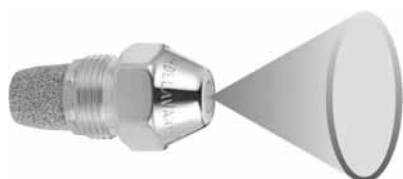
- For On-Off control of oil flow to domestic oil burner equipment
- Power interruption closes the valve immediately
- Mount directly in pipe line or on support bracket
- 120 Volt

Operation	Oil Flow Capacity	Operating Pressure	Orifice Size	Brand	Part Number
With integral thermister to delay valve opening 3 to 8 seconds to allow burner fan to reach operating speed before discharging oil	5 to 35 gph	150 psi	0.078"	Honeywell	V4046A1116
Provides positive control of oil flow and opens immediately when energized	5 to 35 gph	300 psi	0.043"	Honeywell	V4046B1049

Oil Burner Nozzles

Oil Burner Nozzles

Cone Type	Description	Nozzle Type
Hollow	Mainly used on burners with a hollow cone air pattern and for through puts up to 2.00 GPH. The droplet distribution is concentrated on the outside of the cone and results in good ignition and low noise combustion.	A
Solid	Produces a solid cone spray similar to B nozzle but with a slightly lower concentration of the droplets in the center of the cone. They are high performance in burners of low up to medium capacity (flows up to 2.00 GPH)	AR
Solid	Produces a spray that distributes droplets fairly uniformly throughout the complete pattern. The spray pattern becomes progressively more hollow at higher flow rates, particularly above 8.00 GPH. Provides smooth ignition and efficient combustion, especially in larger burners (those firing above 2.0 or 3.00 GPH).	B
Narrow	Produces a narrow spray angle used mostly for Semi-Industrial or Scotch Marine applications where narrow spray angle and high spray velocity is essential.	HV
.579MH	Low-capacity nozzle designed for mobile home use. Minimizes the usual plugging problems associated with low flow rates.	MH
Fine Solid	Produces fine atomization with a solid spray pattern up to approximately 3.50 GPH. It gradually becomes more hollow in the larger sizes.	PLP
All Purpose	Produces a spray which is neither truly hollow nor solid. Frequently can be used in place of either solid or hollow cone nozzles between 0.40 and 8.00 GPH, regardless of the burners air pattern. The lower flow rates tend to be more solid.	W



Type A



Type AR & B



Type HV



Type MH



Type PLP



Type W



Nozzle Interchange Chart Spray Angles 30° through 90°	
Hago/Sid Harvey	Delavan
H SS (up to 2.0) SS (over 2.0) ES/P	A SS A or W B*
Monarch	Delavan
NS/PL R/AR (up to 2.0) R/AR (over 2.0) PLP	A AR A or W B
Danfoss	Delavan
S H	W or B A

Oil Burner Nozzles

Oil Burner Nozzles



- Part Number explanation: .85X30A means .85 Gallons @ 30° Hollow Nozzle
- When ordering oil burner nozzles, be sure to specify the following:
Capacity rating in gallons per hour (gph)
Spray Angle
Spray pattern or Type

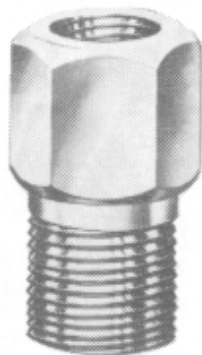
Type "A" Hollow Nozzle - Red Vial							
.85X30A	.65X60A	3.50X60A	1.00X70A	.75X80A	1.35X80A	2.75X80A	.60X90A
1.00X30A	.75X60A	4.00X60A	1.10X70A	.85X80A	1.50X80A	3.00X80A	.65X90A
1.35X30A	.85X60A	7.50X60A	1.25X70A	1.00X80A	1.65X80A	4.00X80A	.75X90A
2.50X45A	1.00X60A	.65X70A	.50X80A	1.10X80A	2.00X80A	8.50X80A	.85X90A
3.25X45A	1.20X60A	.75X70A	.60X80A	1.20X80A	2.25X80A	.50X90A	1.75X90A
	1.25X60A	.85X70A	.65X80A	1.25X80A	2.50X80A	.55X90A	.50X70A
Type "AR" Solid Nozzle - Light Grey Vial							
1.25X60AR	.75X90AR	.85X90AR					
Type "B" Solid Nozzle - Royal Blue Vial							
.75X60B	2.25X60B	.85X70B	.75X80B	1.25X80B	200X80B	2.75X80B	.85X90B
.85X60B	3.00X60B	.60X80B	.85X80B	1.75X80B	2.25X80B	3.50X80B	1.75X90B
1.00X60B	.75X70B	.65X80B	1.00X80B	1.85X80B	2.50X80B	.75X90B	
Hago Nozzle: 21566108 (.50X45B)		Hago Nozzle: 21566109 (.55X45B)					
Type "HV" Narrow Spray Nozzle - Black Vial							
2.50X30HV							
Type "MH" Mobile Home Nozzle - Orange Vial							
.579MH							
Type "PLP" Semi-Solid Nozzle - Black Vial							
3.50X60PLP	10.50X60PLP						
Type "W" Semi-Solid Nozzle - Green Vial							
.40X70W	.60X80W	.65X80W	1.25X80W	.50X90W	.55X90W	.60X90W	.65X90W

Part Number Explanation: .85X30A = .85 Gallons @ 30° Hollow Nozzle

Oil Burner Nozzle Adapters



Female



Male

- Used as a coupling between the nozzle and the oil line from the pump
- Brass construction with precision machined mating surfaces for proper sealing

Pipe Size	Length	Description	Part Number
1/8"	1 3/8"	Standard Female Adapter	28737-1
1/4"	1 3/8"	Standard Female Adapter	28737-3
3/8"	1 3/8"	Male Adapter	28741-1

Oil Burner Fuel Pumps

Oil Burner Pumps



- **Model J's** recommended for single-pipe, gravity feed installations or for two-pipe installations under low-lift conditions up to 10" of vacuum. May be mounted in any position
- **Model H** fuel unit is designed to provide the best performance possible where two-stage pumping is necessary, usually on lone line or high lift installations

Fuel Pump Identification				
Read from Shaft End				
C W	L H	F	2	N(R)
Rotation	Inlet	Mount	Stage	New (Rebuilt)

Series	Description	Brand	Part Number
New Oil Pumps			
J	Single Stage Pump	Sundstrand	CCRHF-N
J	Single Stage Pump	Sundstrand	CCRHH-N
Rebuilt Oil Pumps			
J	Single Stage Pump	Sundstrand/Inqlis	CCLHF-R
J	Single Stage Stub Shaft Pump	Sundstrand/Inqlis	CCLHHSS-R
J	Single Stage Pump	Sundstrand/Inqlis	CCRHF-R
H	Two Stage Pump	Sundstrand/Inqlis	CCRHH-2R
J	Single Stage Pump	Sundstrand/Inqlis	CWLHF-R
H	Two Stage Pump	Sundstrand/Inqlis	CWLHF-2R
J	Single Stage Stub Shaft Pump	Sundstrand/Inqlis	CWLHFSS-R
J	Single Stage Pump	Sundstrand/Inqlis	CWLHH-R
J	Single Stage Pump	Sundstrand/Inqlis	CWRHF-R
H	Two Stage Pump	Sundstrand/Inqlis	CWRHH-2R
Rebuilt Oil Pumps - Exchange will be made on LIKE FOR LIKE Pump ONLY			
Cores are to be returned within a period of 6 months from date of purchase in order to receive full core credit. Invoice number MUST be supplied at time of return			



Oil Burner Fuel Pumps

Oil Burner Mini Pumps - Single Stage - Model A-7000



- Recommended for single-pipe installations to 6" Hg. vacuum or two-pipe installations to 12" Hg. Vacuum
- Lift or gravity feed applications with 10psi Max inlet/return pressure
- On one pipe lift installations, the lift is not to exceed 8 ft.
- Suitable for Kerosene, No. 1 or No. 2 Fuel Oil
- May be mounted in any position
- Flange mounting type
- Pressure Factory set @ 100psi (adjustable 100-150psi)

RPM	Rotation	Nozzle Port Location	Strainer & Nozzle Rating @ 100psi	Features	Description	Brand	Part Number
New Oil Pumps							
1725	R.H	R.H	3 gph	Diaphragm valve, lip seal, positive drive	CWRHF	Suntec	A1VA7112-N
1725	L.H	L.H	3 gph	Diaphragm valve, lip seal, positive drive	CCWLHF	Suntec	A1VC7114-N
1725	R.H	R.H	7 gph	Diaphragm valve, lip seal	CWRHF	Suntec	A1YA7912-N
1725	R.H	R.H	7 gph	Diaphragm valve, lip seal	CCWLHF	Suntec	A1YC7914-N
3450	R.H	R.H	3 gph	Diaphragm valve, lip seal, positive drive	CWRHF	Suntec	A2VA7116-N
3450	R.H	L.H	3 gph	Diaphragm valve, lip seal, positive drive	CWLHF	Suntec	A2VB7117-N
Rebuilt Oil Pumps							
3450	R.H	R.H	3 gph	Diaphragm valve, lip seal, positive drive	CWRHF	Suntec / Inglis	A2VA7116-R
3450	L.H	R.H	2.5 gph	Waste oil & specials	CWLHF	Suntec / Inglis	A2VD7732-R



Beckett's CleanCut™ Oil Pump. See Page A111.

Oil Heating Accessories

Coupling Kits and Replacement Parts



- Self aligning coupling
- Mounts without set screws, installs in seconds
- Drives from the shaft flats
- Measure the free distance between the motor and pump shafts and cut shaft 1 1/4" longer

Description	Contains	Part Number
Nylo-Flex Kit	5/16" End (1), 7/16" End (1), 1/2" End (1) & 6" Shaft (1)	S85-500
Nylo-Flex Kit	5/16" End (1), 7/16" End (2), 1/2" End (2) & 6" Shaft (1)	99A
Nylo-Shaft	30" Length	30RS
Nylo-Flex End Fitting	1/2" Black End	END1/2
Nylo-Flex End Fitting	5/16" Red End	END5/16
Nylo-Flex End Fitting	7/6" Blue End	END7/16

Draft Regulators - Barometric



- Designed to regulate chimney draft with a high degree of accuracy and fuel efficiency
- Locate as near to the furnace as possible
- If the installation has a smoke pipe stack control, locate the regulator at least 18" away from the stack control
- Damper must be mounted with the hinge pins horizontal and the face of the damper plumb for correct operation. This can be done by rotating the damper section within the collar for any pipe position

Fits	Brand	Part Number
5", 6" & 7"	Fields	6DR
6", 7" & 8"	Fields	7DR

Oil Heating Accessories

Furnace Fuel Oil Filters and Replacement Parts

- Fuel filters must be installed in the suction line between the storage tank and burner
- May be installed either at the tank or at the burner where they will protect the fuel pump and burner nozzle from impurities in the fuel oil

Description	Type	Brand	Part Number
Complete Fuel Oil Filters (Head & Filter)			
5 1/8" H x 3 5/8" Dia. - 3/8" NPT Pipe Size - 10 Micron - Firing Rate (#2 Fuel Oil): 10 GPH - 40 PSI	Canister	CGF	1A25B
6 1/4" H x 4 3/8" Dia. - 3/8" NPT Pipe Size - 10 Micron - Firing Rate (#2 Fuel Oil): 25 GPH - 40 PSI	Canister	CGF	2A700B
6" H - 10 Micron - Firing Rate: 10 GPH - Flow Rate: 45GPH - 15 PSI	Spin-On	CGF	CM10GF
Replacement Filter			
Felt Cartridge c/w Gasket - Fits 1A25A Filter & 1A25B		CGF	1A30P
Felt Cartridge c/w Gasket - Fits 2A700B		CGF	2A710P
Spin-On - Fits CM10GF		CGF	CM10
Cap Gasket			
Fits 1A25A & 1A25B		CGF	1A31A



- 1A25B & 2A700B Features:**
- Compatible with Bio-Fuel blends up thru B100
 - Standard with Biogasket™
 - Durable epoxy coated galvanized steel filter bowl inside & out
 - 4EVERLoc bottom bolt design



- CM10GF Features:**
- Prevents filter from shutting down and burner shut off, burner clogging & rusting on the inside
 - Epoxy coated
 - Spring loaded design
 - Head has holes for optional mounting bracket
 - cETL Approved

Furnace Fuel Tank Accessories



Description	Brand	Part Number
44" Tank Gauge. For vertical or horizontal tanks in the basement or above ground	CGF	GF100UL
Dome for GF100UL Tank Gauge	CGF	GP100B
Gasket for GP100B Dome	CGF	GP100LN
1 1/4" Vent Cap - Zinc	CGF	GF125Z
Tank Whistle. Signals when tank is nearly full. Thread Size (Dual): 1 1/4" & 2" MNPT	CGF	GF2126



Magic Soot Stick (#HP-MS-03)