

## Preventing Releases to the Storm Drain

**Question:** Can any liquids, solids or spilled materials from carpet cleaning activities be discharged to the storm drain?

**Answer:** *No carpet cleaning washwater or waste may be discharged to the storm drain.*

*Remember: Think...about what you are doing before you start cleaning.*

**Question:** Does the carpet cleaner have the equipment, material and personnel to handle a spill or discharge (such as a detergent spill)?

**Answer:** *Be Prepared...for any spill or discharge.*

*Remember: Pre-plan: Gather the right equipment and enough material ahead of time.*

**Question:** Is it safe for me to clean up spills and discharges?

**Answer:** *Know...in advance, what you are handling and what to do and make sure staff are trained.*

*Remember: Your safety is paramount.*

**Question:** When do I begin to clean up spills and discharges?

**Answer:** *Act...immediately, using known and safe procedures, and try to contain the spilled material on your property.*

*Remember: Protect the storm drain.*

**Question:** Do I need to report spills or discharges?

**Answer:** Yes! *Communicate...the spill to your supervisor as soon as possible.*

*Remember: Report all spills and discharges that are not contained on site to the number below or to 911 after hours.*

**IDEM 24 Hour Water Pollution  
hotline 1-800-233-7745**

Click anywhere in this document to return to sewage spill cleanup information at

[InspectApedia.com](http://InspectApedia.com)

### Hamilton County Phase II Stormwater Committee

**For more information or to report an illegal discharge of pollutants, please call your city or town below:**

Arcadia: (317) 984-3512

Carmel: (317) 571-2441

Cicero: (317) 984-7072

Fishers: (317) 595-3186

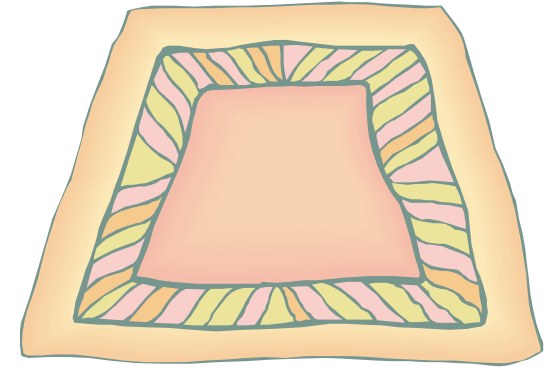
Noblesville: (317) 776-6353

Fishers: (317) 595-3461

Hamilton County: (317) 776-8495

Westfield: (317) 896-5452

## Water Quality Guidelines for Carpet Cleaning Activities



January 2006

This brochure has been prepared to inform residents and businesses in Hamilton County of the guidelines recommended for proper disposal of carpet cleaning wash water in order to protect the water quality in storm drains, channels, creeks, streams and ponds.

Stop and think.

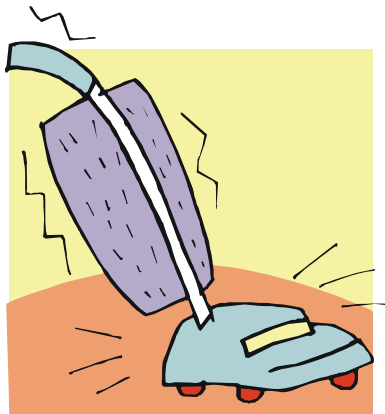
Storm drains do not go to the sewer, they flow directly into channels and creeks, through wetlands and to the ocean.

# Water Quality Guidelines for Carpet Cleaning Activities

This brochure is intended to explain the regulatory issues regarding the discharge of carpet cleaning wastewater. This brochure also explains the procedures that should be followed when carpet cleaning is conducted either by yourself or by professional carpet cleaners.

When using water and detergents to clean carpets, residents and professional carpet cleaners should follow these guidelines in order to prevent waste or wastewater from entering the storm drains where it flows untreated to bays, estuaries and ultimately to the ocean.

These guidelines apply even if the cleaning products are labeled “nontoxic” or “biodegradable”. Although these products may be less harmful to the environment, they can still have harmful effects if they enter the storm drain untreated.



## Filtering Wastewater

Both residents and professional carpet cleaners should be sure to filter the wastewater from carpet cleaning before discharging it to the sanitary sewer since fibers and other debris in the wastewater can clog pipes. The filtered material can be disposed of in the garbage, provided that the carpet was not contaminated with hazardous materials, which cannot be discharged to the sanitary sewer.

## Residential Carpet Cleaning

Wastewater from carpet cleaning must be discharged into a sink, toilet, or other drain connected to the sanitary sewer system within your residence. The wastewater should **never** be disposed of in a street, gutter, parking lot or storm drain.

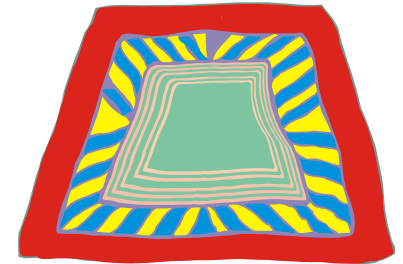
When hiring professional carpet cleaners ask your contractor where they discharge carpet cleaning wastewater.

- Check with the contractor to ensure the spent cleaning wastewater tank is emptied into a utility sink or other indoor sewer connection.
- If you contract with a carpet cleaner regularly, arrange an appropriate location for the contractor to discharge cleaning wastewater such as a utility sink, toilet, or sewer cleanout.

## Commercial Carpet Cleaning

Wastewater from carpet cleaning must be discharged to a sink, toilet, or other drain connected to the sanitary sewer system - **never** to a street, gutter, parking lot, or storm drain.

- The spent cleaning fluid can be disposed of in a utility sink or other indoor sewer connection at your home base.
- Or, contact the nearest wastewater treatment facility for additional disposal options.



Before you allow anything to go into the gutter or storm drain, stop and think.

Storm drains do not go to the sewer, they flow directly into channels and creeks, through wetlands and to the ocean.

Remember the ocean begins at your front door.