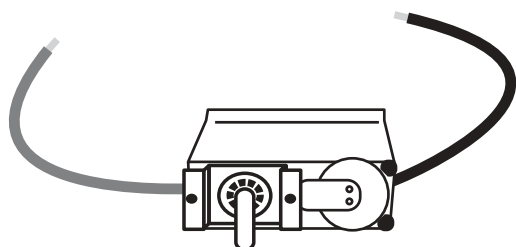


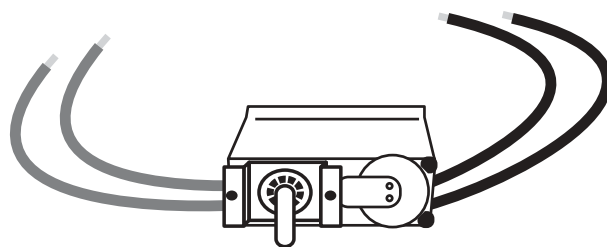


Thermostat Installation Instructions

For Cadet C & CT Series Heaters



Single Pole Thermostat



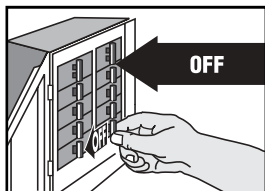
Double Pole Thermostat

Tools Required: Phillips Screwdriver, Insulated Wire Connectors (Wire Nuts®)

General Safety Information

If you are uncomfortable working with electrical appliances, unable to follow these guidelines, or do not have the necessary equipment, consult a licensed electrician.

Installation Instructions



⚠ WARNING

Turn the electrical power off at the electrical panel board (circuit breaker or fuse box) and lock or tag the panel board door to prevent someone from turning on power while you are working on the heater. Failure to do so could result in serious electrical shock, burns, or possible death.

1. If heater is installed, remove grill and heatbox.
2. Fasten thermostat to lower left corner of heat box cover behind bottom flange. Use two no. 6 - 32 x 1/4 inch screws. Exact location will have to be determined when the grill is installed. The longer part of the thermostat body must point to the right. Shaft should come through the large center hole. This is required to fit the heater into the wall can.

3. (A) For double pole thermostats*

Connect one black lead of the thermostat to one lead from the heater. Connect the other black lead to the other lead from the heater. Connect one red lead from the thermostat to one of the supply lines. Connect the other red lead to the other supply line. Use approved insulated wire connectors.

(B) For single pole thermostats**

Connect black lead from the thermostat to one lead from the heater. Connect the red thermostat lead to one supply line. Connect the other lead from the heater to the other supply line. Use approved insulated wire connectors.

4. After installation (or reinstallation) of the heater and the grill, check thermostat shaft alignment with the center of the grill hole. Adjust position of the thermostat on the heat box cover if necessary. Push knob on shaft securely - check alignment.

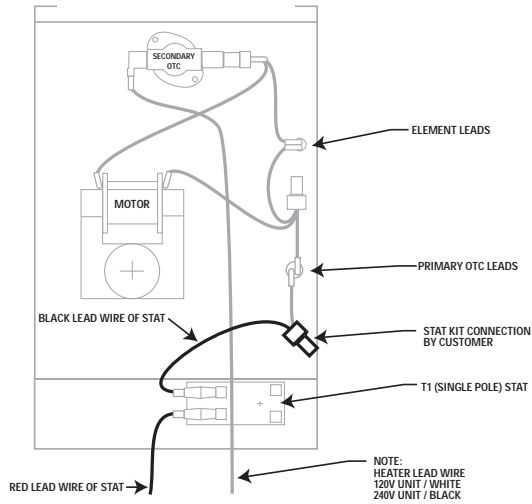
* Double pole thermostat is not necessary on 120 volt service.

** Single pole thermostats may be used with 120 volts or 240 volts.

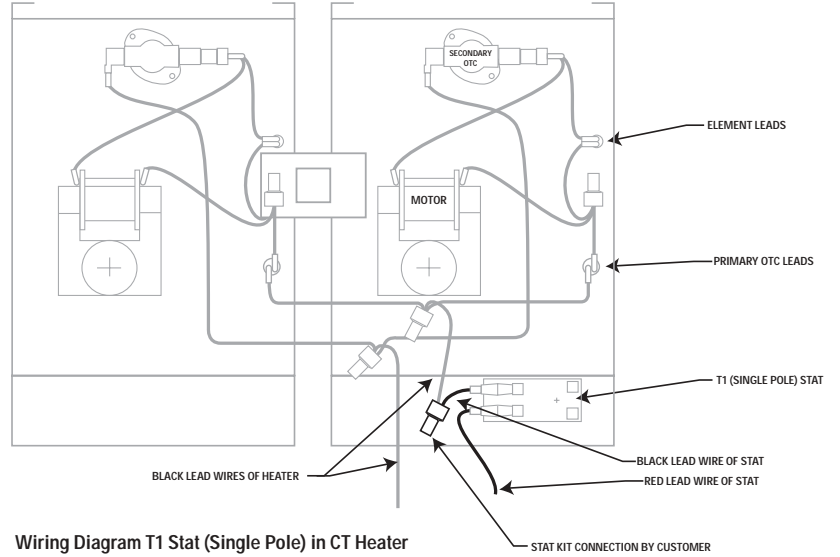
Keep for future reference

TEL: 360-693-2505 Fax: 360-694-6939 P.O. Box 1675 Vancouver, WA 98668-1675

Wiring Diagrams Single Pole T1

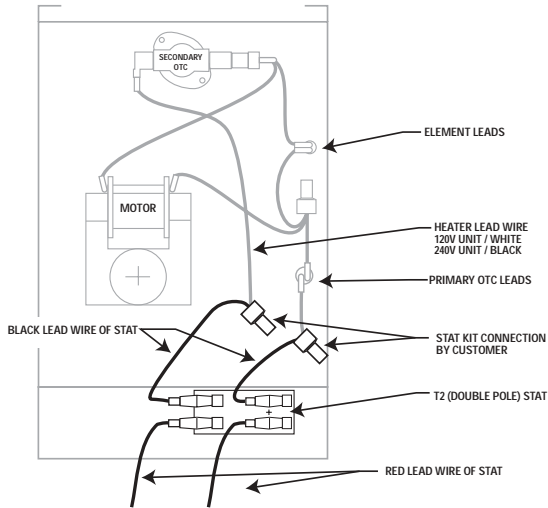


Wiring Diagram T1 Stat (Single Pole) in C Heater

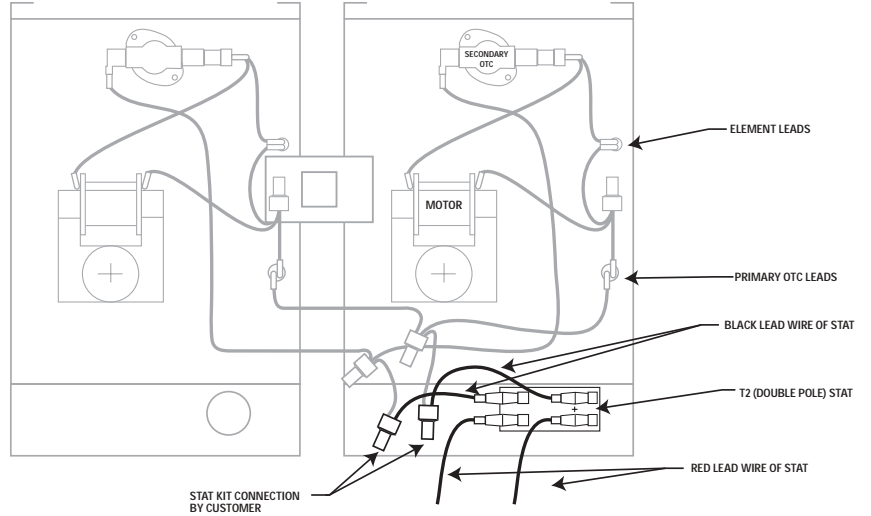


Wiring Diagram T1 Stat (Single Pole) in CT Heater

Wiring Diagrams Double Pole T2



Wiring Diagram T2 Stat (Double Pole) in C Heater



Wiring Diagram T2 Stat (Double Pole) in CT Heater