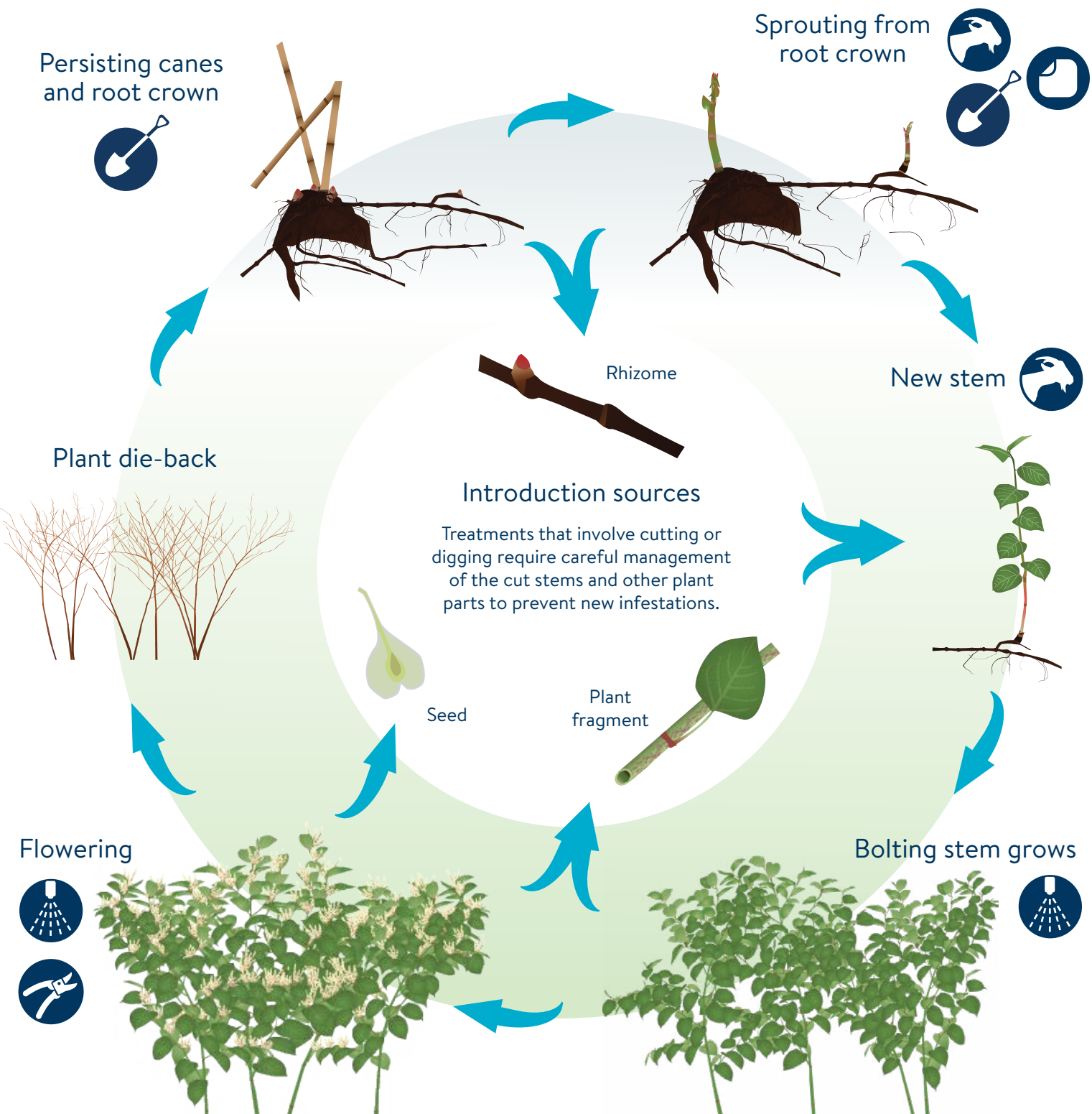


# KNOTWEEDS

*Polygonum spp.*

## PERENNIAL LIFECYCLE & TREATMENT TIMING

[mda.state.mn.us/weedcontrol](http://mda.state.mn.us/weedcontrol)



- 
**FOLIAR SPRAY**  
 Spray when plant is flowering.
- 
**CUT AND TREAT**  
 Cut stem at base and apply herbicide.
- 
**DIGGING**  
 Remove rhizomes multiple times per year.
- 
**SMOTHERING**  
 Cover with tarp to temporarily suppress growth.
- 
**GRAZING**  
 Cattle, goats or sheep eat foliage and stems.
- 
**Monitoring and repeated management is necessary for long term control of established infestations.**