



# AQUAMATIC MODEL

## SHOWER TANKLESS WATER HEATER

### INSTRUCTION MANUAL

Keep this manual with you after your unit has been installed, you may need it for further technical information.



[WWW.MAREY.COM](http://WWW.MAREY.COM)





## Congratulations!

You've just purchased a new Aquamatic tankless water heater and will soon begin to enjoy the benefits of "going tankless."

Take the time to thoroughly read and understand this safety and installation manual in its entirety before you attempt to install your new Aquamatic tankless water heater, as it contains important safety tips and instructions.

Please carefully read all instructions and warnings. Should you have any questions, please visit [www.marey.com](http://www.marey.com) for installation videos and FAQ.

Please keep this manual for future reference.

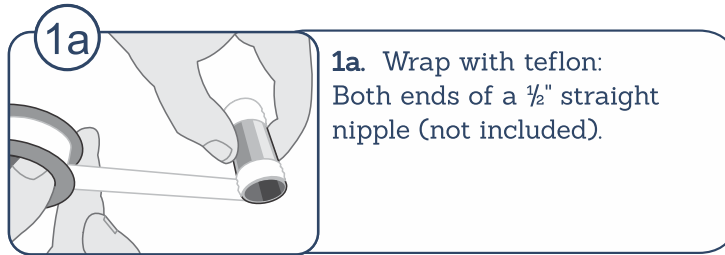


## INDEX

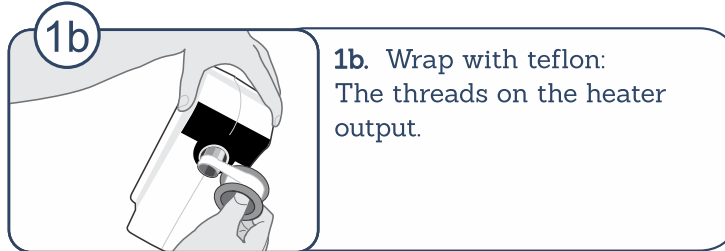
INSTALLING YOUR SHOWER HEATER .....	04
AQUAMATIC TECHNICAL SPECIFICATIONS .....	06
CUSTOMER SERVICE .....	07
OTHER PRODUCTS .....	07



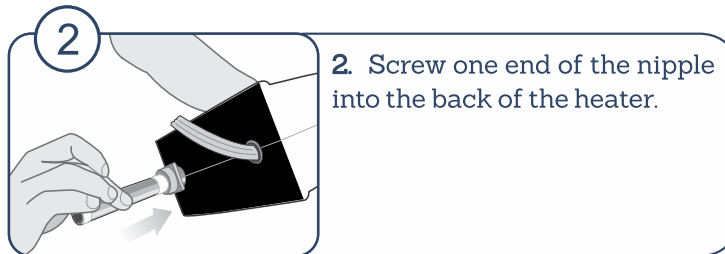
## INSTALLING YOUR SHOWER HEATER



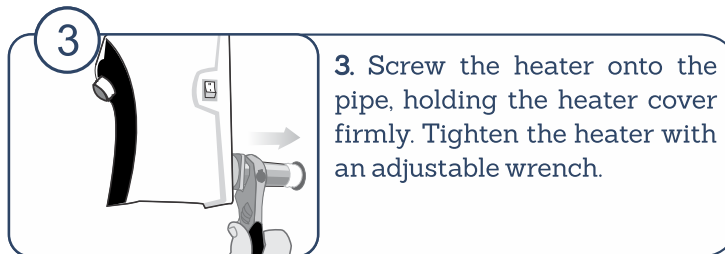
**1a.** Wrap with teflon:  
Both ends of a 1/2" straight nipple (not included).



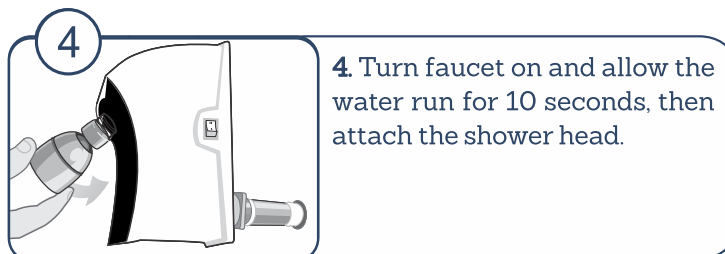
**1b.** Wrap with teflon:  
The threads on the heater output.



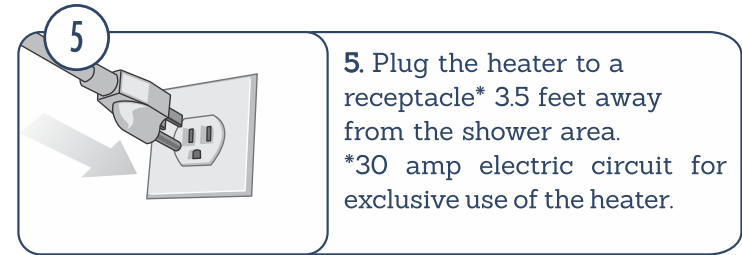
**2.** Screw one end of the nipple into the back of the heater.



**3.** Screw the heater onto the pipe, holding the heater cover firmly. Tighten the heater with an adjustable wrench.



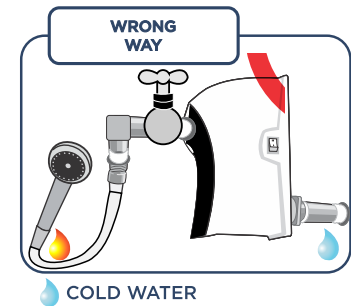
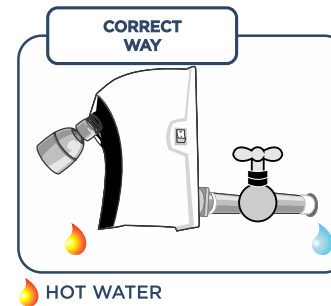
**4.** Turn faucet on and allow the water run for 10 seconds, then attach the shower head.



**5.** Plug the heater to a receptacle\* 3.5 feet away from the shower area.  
\*30 amp electric circuit for exclusive use of the heater.

\*30 amp electric circuit for exclusive use of the heater.

**DO NOT USE EXTENSIONS.**



### CONGRATULATIONS INSTALLATION IS NOW COMPLETE!

Once the faucet is turned on, hot water will come out instantly.

Set the temperature by regulating the flow of water and/or by using the temperature switch at the side of the unit.

**I - LOW (Summer)      II - HIGH (Winter)**

It is recommended to use the original shower head. Restricting the water flow could damage your unit.

**Warranty:** 2 years in parts and labor. **Purchase receipt** is required.

## AQUAMATIC TECHNICAL SPECIFICATIONS

TECHNICAL SPECIFICATIONS		AQUAMATIC	
Voltage	110V	220V	
Voltage x Amperage = Power	110Vx23,5A=2.6kW	220Vx16A=3.5kW	
Min./Max. GPM	0.85 - 1.5 GPM	0.85 - 1.5 GPM	
Temperature Control	HI & LOW Switch & Water Pressure	HI & LOW Switch & Water Pressure	
Temperature Increase	110V = 10°F - 23°F	220V = 10°F - 30°F	
Width x Height x Depth	5" x 7.5" x 3.5"	5" x 7.5" x 3.5"	
Weight	4 lbs	4 lbs	

TEMP. INCREASE PER GPM			
AQUA110		POWER 1	POWER 2
GPM	0.85	27°	36°
	1.0	15°	21°
	1.25	11°	14°
	1.5	9°	12°

TEMP. INCREASE PER GPM			
AQUA220		POWER 1	POWER 2
GPM	0.85	45°	60°
	1.0	25°	34°
	1.25	17°	24°
	1.5	15°	20°

Temperature increases listed are based on use of the water heater under optimal conditions with an incoming water temperature of 48°F. Variable factors such as incorrect or imperfect installation or warmer incoming water temperature may yield different results.

## CUSTOMER SERVICE



At Marey, we pride ourselves on the excellence of our customer service and support team.

Please feel free to contact us if you have any questions about our products, warranty service, or if you need assistance installing a unit. We also strive for continuous improvement, so we welcome your comments, feedback and suggestions.

## OTHER PRODUCTS

Please visit our website to get to know more about other Marey products.



ECO110



POWER PAK



ECO180



GAS PORTABLE



POWER GAS



POWER GAS 16L ETL

Delbrey Street, 211  
San Juan, Puerto Rico  
00912

[www.marey.com](http://www.marey.com)