



Sold By The
**GOLDEN
RULE**

ALADDIN

READI-CUT HOMES

(NOT PREFABRICATED)



The Ventura - 1954

INDEX ON BACK COVER

This book is the 48th annual edition of the Aladdin catalog. It contains the accumulated experiences and knowledge of 48 years designing and manufacturing Aladdin Read-Cut Houses for American Home Builders.

SAVE FOUR
PROFITS
ON THE

LUMBER, MILLWORK, HARDWARE AND LABOR

NEARLY A HALF CENTURY
48 YEARS OF
ALADDIN SUCCESS



W. J. SOVEREIGN—48
President

These fifteen Aladdin workers have spent their entire lives, a total of 570 years, in the service of American homebuilders through the unmatched facilities and experience of The Aladdin Company. The number of years each has uninterruptedly given to Aladdin service follows each name.



H. V. WHITE—34
Asst. Gen. Mgr.



A. I. LAMB—40
Sup't of Production



O. E. SOVEREIGN—48
Treas. and Gen. Mgr.

THE READI-CUT SYSTEM OF HOME BUILDING WAS ORIGINATED BY ALADDIN

THE ALADDIN COMPANY was founded forty-eight years ago by W. J. Sovereign and O. E. Sovereign who perfected and established the world's First Read-cut System of Home Building.

Today, as in the past, the company is still managed and owned by these two brothers. Customers of forty-eight years ago may write to The Aladdin Company today and know that the management is unchanged, and that they are writing to and dealing with old friends.

Their vast experience in the wants and needs of homebuilders, in the choice of the best materials for their use, in the preparation and manufacture of the lumber is of tremendous value to every customer of Aladdin. The Sovereign Brothers are ready to give you their personal time and assistance to guard you from the mistakes so often made by inexperienced homebuilders. This service costs you not one cent extra. It is included as a part of every Aladdin transaction.

The Read-cut System as originated by The Aladdin Company has been approved by the United States Government, the Michigan State Government, and hundreds of big corporations by large purchases of Aladdin Houses. This company manufactured and shipped the first complete read-cut home built in the world.



V. LEPEAK—44



F. LUTZKE—43



OTTO PIERCE—41



B. ANDREWS—41



A. FERMODA—38



C. LOHRKE—38



Z. BURGESON—34



G. PORTER—33



I. BRAUER—33



J. SOVEREIGN—29



W. SCHULTZ—26

ALADDIN ENTERS ITS FORTY-EIGHTH Year of Manufacturing READI-CUT HOMES



ALADDIN'S LONG EXPERIENCE MEANS:

- THE PERFECTION OF MACHINE PRODUCTION
- A SAVING OF TIME AND LABOR ON THE JOB
- ELIMINATION OF WASTE OF MATERIALS

ALADDIN SYSTEM IS BUILT ON THIS PRINCIPLE:

Modern power-driven machines can do BETTER work at a lower cost than hand labor. Then every bit of work that CAN be done by machine SHOULD be so done. The steel worker with a little hack-saw trying to cut and fit the steel girders of the modern skyscrapers should be no more out of place than the modern carpenter cutting sills, joists, and rafters. The skyscraper framework is cut to fit by machines in the steel mills, marked and numbered ready for erection. The lumber in the Aladdin houses is cut to fit by machines in the Aladdin mills, marked and numbered ready for erection. The steel system is over sixty years old—the Aladdin system over forty-eight years old.



An Aladdin Read-cut Home saves you from twenty to thirty percent in your labor bill because the carpenter does not have to spend his time working out the construction details, and cut all the lumber by hand. Our complete drawings give him construction details that have been proven the best over a period of forty-eight years. When building the Aladdin Way, you save all the time used by a carpenter in measuring, cutting, trying and fitting, because all of this work has been done in our factory by modern

machines. A machine cut Aladdin home is better built, stronger and more substantial and it will give you a lifetime of satisfaction.

Standard size materials save waste. We save you eighteen percent in waste because our homes are designed to use standard sizes and lengths. Also all mill work, doors, windows, etc., are manufactured to standard sizes thus making it possible for us to produce them in tremendous quantities. Naturally with the large production and modern factory manufacturing methods, we effect a saving for you on all of the items entering into the construction of your home. All lumber used in Aladdin homes is standard size as adopted by The National Association of Lumber Manufacturers.

Volume the Magic Word The first rule in the decalogue of manufacturing is: To lower the cost, divide the several parts of the labor employed into simple, specialized, mechanical operations.

But this won't work without the mystic word. And that word is "VOLUME!"

Your local contractor may build ten houses a year. Could he afford to invest \$50,000 in machinery to lower his cost on the ten houses twenty per cent?

"Volume" of business makes possible the highly specialized machinery found throughout the Aladdin mills; makes practical the investment of \$10,000 in a single machine which will lower the cost \$5.00 on a house!

But that \$5.00 is multiplied twenty to thirty times on each house and it saves every buyer of an Aladdin from \$100 to \$300 on construction cost alone.

Quantity Buying Because of the tremendous amount of building materials we purchase each year, we are in a position to buy at the lowest possible prices. The large quantity purchased makes it possible for us to obtain prices far lower than any company or individual who has a demand for only a few houses each year.

When the finest grades of materials are used, you are assured of the highest kind of an investment in your home. We never, in any case, sacrifice quality for price or profit. Aladdin Certified Lumber is guaranteed to be unsurpassed.



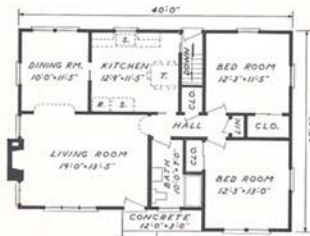
Showing Simple Plan of Laying Out Materials

One of the most amusing remarks made is that the builder of an Aladdin home will lose as much time hunting out his material and finding the right pieces as he will save by the Read-cut System. Any thought about time lost in hunting for pieces will be found untrue when you see the simple system of laying out materials given in our Instruction Book with every home.

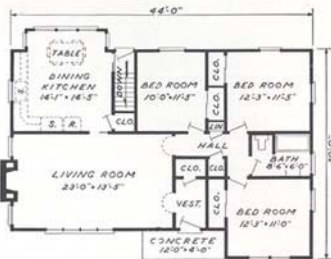


The San Diego — Beautiful California REDWOOD HOME — Price Given On Enclosed Price List WE PAY THE FREIGHT

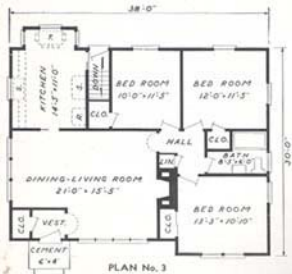
"Commandingly original," adequately describes this California Redwood Aladdin home. Redwood has long been known for its limitless life, either exposed to the elements or used for interior finish. Its beauty is enhanced when given our special Redwood Stain finish. The vertical Redwood boarding holds paint as well as any other wood that might be chosen. Observe the wide eaves supported by brackets, the appropriate entrance hood and the saucy cupola atop the roof. Three plans below give you an excellent choice to meet your own desires. In Plan Three, Front door and hood will be at left side of Scenic front window. For further information about the San Diego, write us.



PLAN No. 1



PLAN No. 2



PLAN No. 3

A LOVELY KITCHEN

The fascinating treatment of the dining corner arrangement shown at right is possible in a great many Aladdin floor plans. Bright colors add greatly to the pleasure of home work.





The Embassy—

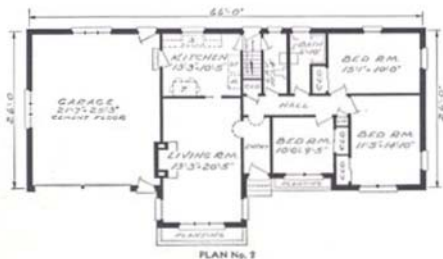
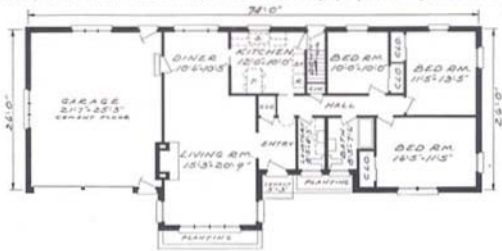
One Of Aladdin's Newest
RANCH HOUSES

Price Given
On Enclosed
Price List

WE PAY
THE
FREIGHT

Above is illustrated the very latest architectural masterpiece just as it came from the draughting tables of our designers. Many hours of study and planning were patiently devoted to its final perfection and acceptance for our catalog. As shown above it pictures the exterior finished in brick veneer. We do not supply brick or any other masonry materials. If you wish to use wood siding or shake shingles on exterior walls write us for prices. The living room projects toward the front, from the main structure, and is in harmony, proportionally, with the whole. Well grouped

check rail windows break up the expansive front wall. Gable ends are furnished in siding as shown. Two plans are shown both in three bedroom sizes. In both plans you will find powder room as well as conventional bath. Attached garage does not protrude in front—another harmonious detail. Write for specifications.



**BUILD YOUR
OWN HOME**

The Construction used in an ALADDIN HOME is the same as that used in the Best Architect-designed Contractor-built house erected anywhere.



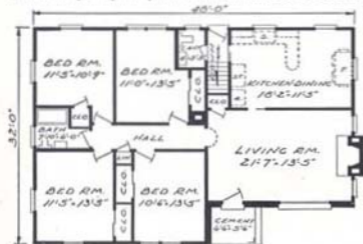
The Groveland—Refreshingly Modern

Price Given
On Enclosed
Price List

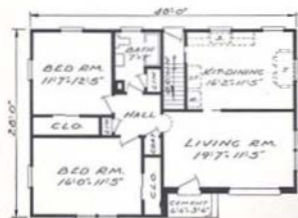
WE PAY
THE
FREIGHT

Aladdin is proud of this exquisitely beautiful and refreshingly modern home. Here is another instance where our architects have been able to achieve a most interesting and varied design from a simple square plan. The main roof serves to shelter the front entrance and is supported

by a striking metal porch column. The picture above merits a thorough study of its many engaging features. Contrast is achieved in the outside elevation by using stone fronting, with shake shingles for the main body walls and bevel siding for the gables. If you prefer to use stone or masonry materials as illustrated, write us for allowance for siding and paint for that portion of the front wall. Take a moment to study the plans shown here, and you will realize that this modern home is extremely livable and spacious. Write us for detail information and complete specifications.



PLAN No. 1



PLAN No. 2

HOW TO ADD MASONRY EMBELLISHMENTS TO YOUR NEW ALADDIN HOME

You will note that the illustrations of many Aladdin Homes include an attractive bit of stone or brick work. Part of these designs show this masonry as an actual detail of the house itself. Others are quite separate and are planned to create decorative and colorful harmony. To aid and guide you who may not have had any experience in such work, our book of instructions, which is sent to you shortly after receipt of your order, gives you complete and detailed information and pictures covering the building of terraces in brick, stone and flagstone, decorative walls for plantings, trim and entrance and retaining walls.

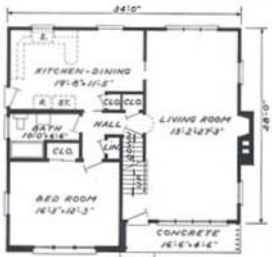


The Monterey—Hospitality House

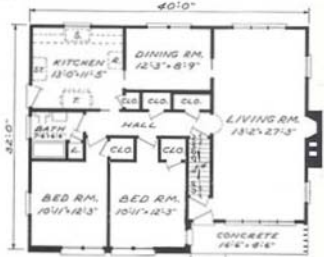
Price Given
On Enclosed
Price List

WE PAY
THE
FREIGHT

"Hospitality house" would be a proper term to describe this warm and friendly home. It is purely conventional in feeling, yet incorporates especially modern features. The living rooms are really expansive and prepared for entertaining a host of friends. Notable is the design of the dining-kitchen in plan No. 1. Here the family gathers in close association with the homemaker on the three occasions of every day—meal time. More and more it is becoming common to combine the kitchen and dining room. The plans below speak for themselves. Price quoted for the No. 1 plan includes finishing second floor as shown. Price on the No. 2 plan includes stairway and rough floor only. Price for finishing Plan No. 2 complete will be given you on request. We will tell you more about the Monterey if you write us. In our price for the Monterey we have included siding where brick is shown in front wall. If you plan to use brick as illustrated, write us for allowance for omission of siding and paint for that portion of the front wall.



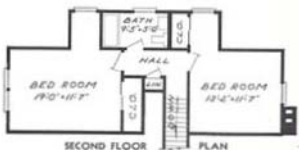
PLAN No. 1



PLAN No. 2



SECOND FLOOR PLAN



SECOND FLOOR PLAN



WE SHIP COMPLETE HOUSE IN SEALED BOX CAR





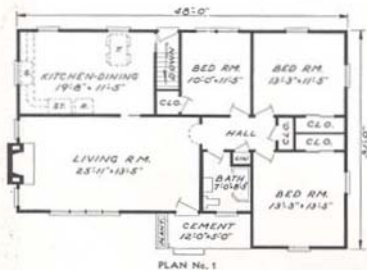
The Ventura—1954 Inspiration

Price Given
On Enclosed
Price List

WE PAY
THE
FREIGHT

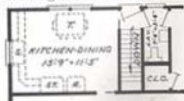
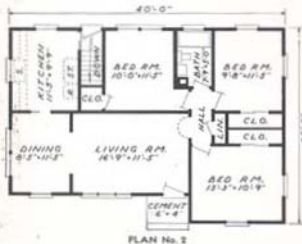
The Ventura is one of several new Aladdin designs planned for 1954. It is Western in inspiration and offers the lately popular hip roof. Its broad chimney can be built now or, because of its location on the outside wall of the living room, can be added later. Here in Plan One arrangement,

the living room is approximately 26 foot x 14 foot, having an expansive Scenic window and ample wall space. The kitchen-dining room, which is becoming extremely popular in most new designs, is approximately 20 feet x 12 feet. Each plan has three large bedrooms. Write us for specifications and further information.



ALTERNATE PLAN No. 1

Shown below is an alternate plan for the No. 1 arrangement. In sketch below you will note there is a half bath—lavatory and toilet. This is available in Plan One arrangement only, at a slight additional cost, and is accomplished by reducing the width of kitchen-dining room approximately three feet. Write us for prices.



ALADDIN HOMES ^{Readi-Cut}



ARE SOLD BY

The Golden Rule

48 YEARS HOMEBUILDERS
TO THE NATION

THE ALADDIN COMPANY is in its FORTY-EIGHTH year of successful business. To you this means safety in dealing with us. It means belief and confidence in our statements. It means satisfaction with your new home. It means a saving of your money. The same men who started the business forty-eight years ago are still owners of the company and active heads of the organization. Can you find safer conditions under which to deal in buying and building your new home? One of the greatest advantages in building an Aladdin Home, besides the high quality of materials, is in buying everything at one time from one company at one price. This does away with costly extras, forgotten items of expense that the inexperienced home builder oft-times overlooks. Aladdin has helped tens of thousands of homebuilders throughout the United States and will help you. We are so proud of our manufacturing facilities that we would welcome a visit from you so we could show you through our plant at Bay City, Michigan where you would see the actual materials being manufactured and loaded for our Aladdin Homes.

QUALITY ENDURES THRU THE YEARS

FREIGHT PAID PRICE LIST

ALADDIN Readi-Cut HOUSES

SEND FULL CASH WITH YOUR ORDER AND DEDUCT 5% FROM THE TOTAL AMOUNT OF YOUR ORDER INCLUDING ANY EXTRA MATERIALS YOU HAVE SHIPPED ALONG WITH YOUR HOUSE.

HOUSES				HOUSES					
Name of House	Page	Freight Paid Price	5% Cash Discount	Cash With Order Price	Name of House	Page	Freight Paid Price	5% Cash Discount	Cash With Order Price
Acacia No. 1	61	\$4160	\$208	\$3952	Evanston No. 1	13	\$5067	\$254	\$4813
Acacia No. 2	61	3880	194	3686	Evanston No. 2	13	4585	230	4355
Alamo No. 1	32	4605	231	4374	Flamingo No. 1	21	7697	385	7312
Alamo No. 2	32	4490	225	4265	Flamingo No. 2	21	5998	300	5698
Alamo No. 3	32	4016	201	3815	Friendship No. 1	14	4698	235	4463
Alvarado No. 1	18	3047	153	2894	Friendship No. 3	14	5760	288	5472
Alvarado No. 2	18	3853	193	3660	Glen Cove No. 2	23	5050	253	4797
Ambassador No. 1 ..	28	5597	280	5317	Glen Cove No. 3	23	4720	236	4484
Ambassador No. 3 ..	28	4758	238	4520	Graystone No. 1	41	5188	259	4929
Astoria No. 1	10	5210	261	4949	Graystone No. 2	41	4260	213	4047
Astoria No. 2	10	5724	287	5437	Graystone No. 3	51	5237	262	4975
Bellevue No. 1	57	4698	235	4463	Groveland No. 1	6	6069	304	5765
Bellevue No. 2	57	5946	298	5648	Groveland No. 2	6	4815	241	4574
Brentwood No. 1	17	4882	245	4637	Highwood No. 1	19	3534	177	3357
Brentwood No. 2	17	4355	218	4137	Highwood No. 2	19	4138	207	3931
Brentwood No. 4	17	4075	204	3871	Hollywood No. 1	12	8200	410	7790
Brentwood No. 5	17	5352	268	5084	Attached Garage Omitted		7698	385	7313
Bristol A	56	4723	236	4487	Hollywood No. 2	12	6589	330	6259
Bristol B	56	4794	239	4555	Attached Garage Omitted		6087	305	5782
Bristol C	51	5098	255	4843	Houston No. 1	11	5540	277	5263
Cambridge No. 1	9	5917	296	5621	Inglewood No. 2	60	3045	153	2892
Attached Garage Omitted		5447	273	5174	Inglewood No. 3	60	3887	195	3692
Cambridge No. 2	9	6209	311	5898	Jasmine No. 1	64	3705	185	3520
Attached Garage Omitted		5653	283	5370	Jasmine No. 2	64	3712	186	3526
Cambridge No. 3	47	6259	313	5946	Jasmine No. 3	64	2100	105	1995
Attached Garage Omitted		5789	290	5499	Laurel No. 1	24	2078	104	1974
Coronado No. 1	34	5152	258	4894	Laurel No. 2	24	3774	189	3585
Attached Garage Omitted		4789	240	4549	Lexington No. 1	16	5998	300	5698
Coronado No. 3	34	3865	194	3671	Attached Garage Omitted		5490	275	5215
Coronado No. 4	34	5826	292	5534	Lexington No. 2	16	6239	312	5927
Coronet No. 1	29	5320	266	5054	Attached Garage Omitted		5731	287	5444
Coronet No. 2	29	4677	234	4443	Manhasset No. 1	15	4975	249	4726
El Rancho No. 1	40	5994	300	5694	Manhasset No. 2	15	4947	248	4699
El Rancho No. 2	40	4822	241	4581	Monterey No. 1	7	6900	345	6555
Embassy No. 1	5	7212	361	6851	Monterey No. 2	7	6497	325	6172
Attached Garage Omitted		6573	329	6244	Newport No. 1	30	4493	225	4268
Embassy No. 2	5	6410	321	6089	Newport No. 6	30	5320	266	5054
Attached Garage Omitted		5771	289	5482					

SOLD BY THE GOLDEN RULE

FREIGHT PAID PRICE LIST 1

ALADDIN REDI-CUT HOUSES

SEND FULL CASH WITH YOUR ORDER AND DEDUCT 5% FROM THE TOTAL AMOUNT OF YOUR ORDER INCLUDING ANY EXTRA MATERIALS YOU HAVE SHIPPED ALONG WITH YOUR HOUSE.

HOUSES		Freight Paid Price	5% Cash Discount	Cash With Order Price
Name of House	Page			
Palomar No. 1	33	\$4268	\$214	\$4054
Palomar No. 2	33	3695	185	3510
Palomar No. 3	33	5432	272	5160
Parkway No. 1	48	4557	228	4329
Attached Garage Omitted		4197	210	3987
Parkway No. 4	48	4852	242	4610
Attached Garage Omitted		4455	223	4232
Parkway No. 5	48	5426	271	5155
Attached Garage Omitted		5066	254	4812
Pasadena No. 1	20	4547	227	4320
Pasadena No. 2	20	4143	207	3936
Plaza No. 2	27	5998	300	5698
Attached Garage Omitted		5588	280	5308
Plaza No. 3	27	5658	283	5375
Attached Garage Omitted		5248	263	4985
Redwood No. 1	45	3419	171	3248
Redwood No. 2	45	3679	184	3495
Redwood No. 3	45	4123	207	3916
Rio Grande No. 1 ..	36	6836	342	6494
Rio Grande No. 2 ..	36	5466	273	5193
Royton No. 1	26	4547	228	4319
Royton No. 2	26	4820	241	4579
San Diego No. 1	4	5026	252	4774
San Diego No. 2	4	5745	288	5457
San Diego No. 3	4	5250	263	4987
Santa Barbara No. 1	44	6386	319	6067
Attached Garage Omitted		5890	295	5595
Santa Barbara No. 2	44	5846	292	5554
Attached Garage Omitted		5350	268	5082
Santa Fe No. 1	37	5410	271	5139
Santa Fe No. 3	37	4726	237	4489
Sunshine B	35	3855	193	3662
Sunshine E	35	3959	198	3761
Sylvan No. 1	22	4327	217	4110
Sylvan No. 2	22	4240	212	4028
Sylvan No. 3	22	3472	174	3298
Ventura No. 1	8	5329	267	5062
Ventura No. 2	8	4578	229	4349

HOUSES		Freight Paid Price	5% Cash Discount	Cash With Order Price
Name of House	Page			
Vinewood No. 1	31	\$4207	\$211	\$3996
Vinewood No. 2	31	4354	218	4136
Yorktown No. 1	25	3960	198	3762
Yorktown No. 2	25	4473	224	4249

OMISSION OF ATTACHED GARAGES

You will note that a substantial number of Aladdin designs are planned with the garage incorporated as a part of the structure. These plans, naturally, require building lots of considerable width. To meet such a situation, we have priced these plans as pictured, and also each identical plan with the garage omitted.

ALADDIN DETACHED GARAGES SHIPPED ONLY WITH HOUSE

GARAGES		Freight Paid Price	5% Cash Discount	Cash With Order Price
Name of Garage	Size			
Standard No. 5 ..	12'x22'	\$589	\$30	\$559
Standard No. 7 ..	16'x22'	729	36	693
Standard No. 6 ..	20'x22'	840	42	798
Suburban No. 5 ..	12'x22'	596	30	566
Suburban No. 7 ..	16'x22'	736	37	699
Suburban No. 6 ..	20'x22'	853	43	810
Sovereign No. 5 ..	12'x22'	673	34	639
Sovereign No. 7 ..	16'x22'	769	39	730
Sovereign No. 6 ..	20'x22'	914	46	868

DETACHED GARAGES SHOWN ON PAGE 55

HOMEBUILDERS TO THE NATION

THE ALADDIN GUARANTY

The ALADDIN Guaranty gives you absolute protection. We guarantee all materials furnished by us for your Aladdin Home to be exactly as represented in our catalog and specifications, and as may be modified by your order. Further, that you will receive everything in perfect condition and a sufficient amount of all materials to complete the home according to the drawings and specifications furnished by us.

The Quality and Quantity of all materials as guaranteed by us gives you the strongest protection possible when backed by the oldest manufacturer of readi-cut homes in the world, having 48 years of honest dealings with home builders throughout the entire United States.

There Is No Substitute For Quality

Forty-eight years of knowing how and where to buy the finest materials used in home construction has proven beyond a doubt that "Aladdin" will furnish only superior grades of lumber in Aladdin Homes.

The economies of the Read-cut System in waste-saving makes it possible for us to supply the very best materials at a lower cost than one would pay for ordinary grades.

TERMS OF PAYMENT

No. 1 Send full cash with your order and you can deduct 5% from the total amount of your order. This includes any extra materials you may order to be shipped with your home.

No. 2 If you are financing your home thru your local Bank or Building and Loan Association, have them write us that they will pay a draft for the total amount of your order, payable "ten days after sight". Bill of lading covering the material for your home will be attached to draft marked "Allow Inspection". This will enable you to examine your material, if you wish, before paying draft. **A five per cent discount will be allowed when payment is made in this manner.**

FREIGHT PAID PRICES

The freight paid prices quoted on this price list apply for shipment into the states of Michigan, Ohio, Pennsylvania, New York, Minnesota, Wisconsin, Iowa, Missouri, Illinois, Indiana, Kentucky, West Virginia, New Jersey, Connecticut, Massachusetts, New Hampshire, Vermont, Maine, Rhode Island, Maryland, Virginia, Tennessee, Delaware, North Carolina, South Carolina, Georgia, Mississippi, and Alabama.

Read Pages 13, 15, 36, 37, 39, 50, 54 and 62 Carefully

HOW am I protected in buying an ALADDIN Readi-Cut HOUSE

You are protected by the resources of a million dollar corporation when you deal with The Aladdin Company. Every statement made must be strictly lived up to — and is.

You are further protected by the clean record of over forty-eight years' business history of The Aladdin Company.

And you are further protected by the knowledge that The Aladdin Company originated, perfected and established the Readi-Cut System of Construction and established the Readi-Cut House Industry, and are the largest exclusive manufacturers of Readi-Cut houses in the world.

NO GUESSWORK WHEN YOU BUY AN ALADDIN HOUSE

Within a few days after we receive your order, you will receive the official receipt for your remittance and your typed copy of your order showing you exactly how your order has been entered on our books and in our production schedule. With an Aladdin Home you receive the benefit of our valuable and complete instructional service. The materials are selected and manufactured exactly in accordance with the detail plans and specifications, thus assuring you that your home will be properly constructed in every detail. We will send you a foundation plan upon the receipt of a deposit of \$5.00. You can then have your foundation constructed before your materials arrive. The deposit is deductible from your order. The complete blueprints will arrive soon after your order has been entered and processed, thus giving you time to study the plans before your house materials reach you. The erection of your Aladdin Home is easy, simple, systematic and economical.

GABLE MATERIAL

For the white gables illustrated on pages 15, 17, 27, 29, 33, 36 and 64, we furnish exterior plywood veneer, which is perfectly smooth. We can furnish V-cut perpendicular boarding as shown on page 13, or bevel siding as shown on page 5, or shake shingles. Specify gable material desired when ordering any of the homes mentioned above.

BRICK VENEER

Any Aladdin Home shown in the catalog with siding or shingles on the exterior can be built having a brick veneer exterior, which we do not furnish. Write us for the allowance for omission of siding, paint and nails if you wish to veneer the exterior with brick. We do not furnish any of our homes for a solid masonry exterior wall such as solid brick, concrete blocks or stone.

THE ALADDIN COMPANY

HOME OFFICE AND MILLS
BAY CITY, MICHIGAN

Here's Proof of ALADDIN Quality

It has often been said that "Quality" is remembered long after Price is forgotten. When we speak of the Quality of Aladdin Houses, we mean it to cover strength and soundness of planning, design and construction—besides unexcelled superiority of materials.

As you become convinced of Quality in the following pages, you will also become convinced of what is just as important to you NOW — SAVINGS with Quality.

A CHALLENGE:

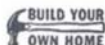


Come to Bay City.

Go through our Aladdin Mills.

Inspect the lumber being loaded in the cars. IF YOU HAVE EVER SEEN ANY SIMILAR MATERIALS OF HIGHER GRADE OR HIGHER QUALITY, WE WILL PAY THE EXPENSES OF YOUR TRIP IN FULL.

ANOTHER CHALLENGE:



Our Guarantee of Satisfaction or Your Money Back covers the replacement of any materials not found as represented.

PRIDE OF OWNERSHIP, PRIDE IN HAVING THE FINEST, WILL ACCOMPANY YOU THROUGH ALL THE COMING YEARS.

TO DEFINE more ACCURATELY and SPECIFICALLY what above means in QUALITY, we GUARANTEE YOU WILL RECEIVE

KNOTLESS Siding

KNOTLESS Window Sash

KNOTLESS Outside Finish

KNOTLESS Base Board

KNOTLESS Inside Woodwork

KNOTLESS Doors

KNOTLESS Door, Window Frames

KNOTLESS Finish Flooring

And Remember — All of the above items are thoroughly KILN dried.

NO ALADDIN HOUSE Is Offered to the Public Until Our Engineers Have Carefully Checked Every Construction Detail. YOU GET THE NEWEST IN DESIGN, PLANS AND MATERIAL.



The Cambridge—Designed for Living

Price Given
On Enclosed
Price List

WE PAY
THE
FREIGHT

Fascinating contrasts are illustrated in the choice of exterior materials for this 1954 home. The outside wall material used is our heavy double laminated shake shingles. The starting courses below the shakes have been chosen from our beautiful clear siding, while the front projecting roof and entrance are embellished by pure white perpendicular clear boards. The whole interesting picture is completed by installing scrolled iron columns. Two arrangements of "design for living" are shown below. You will notice that in each plan the garage is inconspicuous but completes a harmonious design. The Cambridge is one of Aladdin's newest creations and has already drawn many compliments from those who have had a preview. At your request we will furnish further details and of course complete specifications.



FOR ANOTHER PLAN
ON THE CAMBRIDGE
SEE PAGE 47

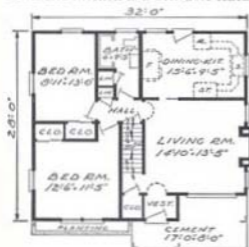


The Astoria — Two Four-Bed Room Plans —

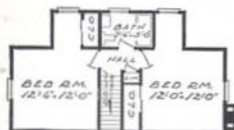
Price Given
On Enclosed
Price List

WE PAY THE
FREIGHT

Here is a distinguished example of a true and conservative American home. Fads and fancies have no part in its well-proportioned architectural details and real home-making interior arrangement. The economies of one-and-a-half story—of expandable design—permit lower investment to start with, and later enlargement of, as the family grows. An inviting front porch opens through vestibule into a really generous, well-lighted living room. Sliding door separates living room and dining-kitchen, which is of exceptional dimensions. Access to bath and bedrooms from both living room and kitchen is a desirable feature. Prices quoted for both plans include stairway to second



PLAN No. 1

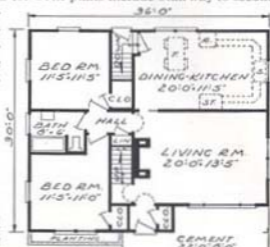


SECOND FLOOR PLAN

floor and sub-floor, but otherwise unfinished. Write for further details.

No Agents or Dealers

Throughout all the nearly half century history of "Aladdin," the Company has never employed agents, dealers or outside salesmen. Aladdin houses can only be bought direct from the Company. No part of your purchase price goes out as commissions, discounts or profits to middlemen. This approximates a saving to you of from ten to fifteen percent, in itself.



PLAN No. 2



SECOND FLOOR PLAN



The Houston — New and Modern —

Price Given
On Enclosed
Price List

WE PAY THE
FREIGHT

A study of this design will disclose many desirable features of a thoroughly modern and livable home. The front approach is distinguished by perfect balance, accomplished by the projection of living room, and garage, which also create a recessed terrace covered by the main roof. The above photo of the Houston was taken in Colby, Kansas where it was erected with brick exterior. It



can of course be had for siding or shakes. Note the size of the rooms in the accompanying plan. All are exceptionally spacious. While a cellar stairs is shown, the Houston can be erected without basement, omitting the stairs to utilize the utility room. Detail specifications will be furnished on request.

QUALITY LUMBER

These huge trees are from six to twelve feet in diameter at the stump and rise to a height of two hundred feet or more. Aladdin selects only the finest parts of these trees and this lumber comes to you either kiln dried for all finish lumber or air dried for framing lumber before being ready-cut for your home.



HERE COMES YOUR ALADDIN HOME FROM THE
GREAT FORESTS OF CALIFORNIA, OREGON, AND WASHINGTON



The Hollywood—Beauty and Harmony—

Price Given
On Enclosed
Price List

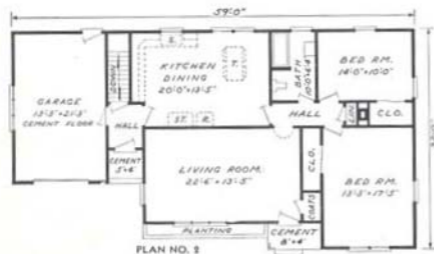
WE PAY
THE
FREIGHT

Aladdin is proud to present this fascinating example of present day 1954 home planning—the Hollywood. Contacts with tens of thousands of prospective homebuilders offer us opportunity to sense the always changing and latest visions of the ideal home. First, study the picture above. Harmony of structure as a whole is reflected in the segmented roof lines and the offsets of the

several walls. Placement of windows is both harmonious and picturesque. Much study was given by our designers to accomplish the maximum of living comfort and step saving. Write us for detail specifications and further information.



ALTERNATE PLAN NO. 1



In Plan One you will find an optional change in the small plan below, which gives you a four bedroom arrangement by eliminating the dining room. We will be glad to discuss any further details upon hearing from you.





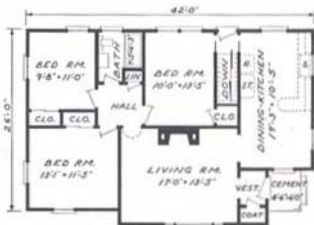
The Evanston — Refreshingly Different —

Price Given
On Enclosed
Price List

WE PAY
THE
FREIGHT

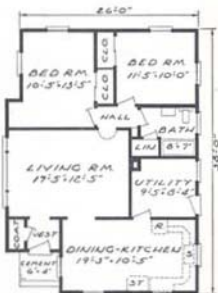
The designing skill of Aladdin's Architectural planners was never better displayed than in the above picture of our new Evanston. Here are combined the latest trends in interesting structural elevations, with a choice of livable and efficient room arrangements. Two of the three gables distinguish themselves with tesselated perpendicular boarding. Our color expert has shown the present popular green body contrasted with white and touched with flamingo on the entrance door. A careful study of the floor plan evidences excellent arrangement and proportion for modern day living. We will be glad to furnish you with complete specifications and further information.

"DO IT YOURSELF" The tremendous impetus given the "DO IT YOURSELF" movement the past year or so is but the long delayed recognition of Aladdin's 48-year national advertising campaigns: "Build Your Own Home."



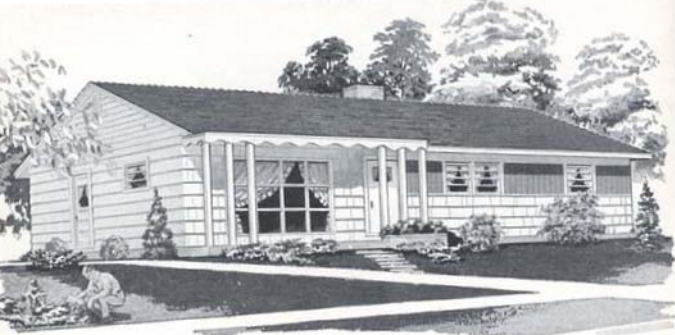
PLAN 1
FOR WIDE OR NARROW LOT

The unique plans shown for the Evanston make possible the placement of either plan on a wide lot with living room facing front, or on a fifty foot lot with entrance and kitchen facing street. Write us for further information.



PLAN 2
GABLE MATERIAL

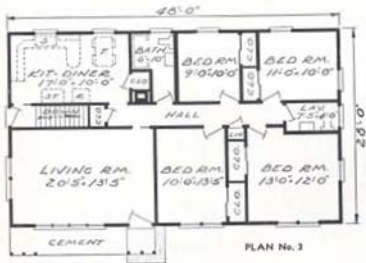
For the white gables illustrated on pages 15, 17, 27, 29, 33, 36 and 61, we furnish exterior plywood veneer, which is perfectly smooth. We can furnish V-cut perpendicular boarding as shown on page 13, or bevel siding as shown on page 5, or shake shingles. Specify gable material desired when ordering any of the homes mentioned above.



The Friendship — With Sheltered Entrance

Price Given
On Enclosed
Price List

WE PAY
THE
FREIGHT

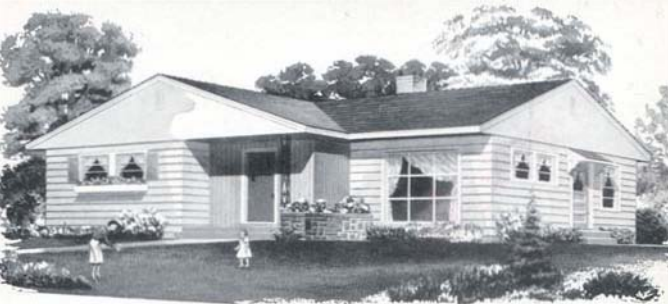


It's new, it's original, it's beautifully proportioned, it expresses brightness, light and *friendliness*. Its simple, well-proportioned lines are appealing—and permit extreme efficiency in production costs. The two most important rooms in a home, the living room and kitchen, are really expansive, and of sizes rarely found in homes of this size. The living room, as designed, provides 40 feet of unobstructed wall space. No problem to arrange furniture to your liking. The FRIENDSHIP kitchen makes possible installing a dining table and all the fixtures AND equipment of the finest "department of foods." While Plan No. 3 includes four bedrooms and a bath

and a half, three generous sized bedrooms and bath are segregated from the living space in Plan No. 1. The carport, if included, at additional cost offers ample protection for your car, at a fraction of the cost of a garage, as well as affording protection for both the front entrance, and access to the kitchen. A storage space for tools and other equipment is arranged under the carport roof. Write us for Specifications and further details.



SEE PHOTO OF FRIENDSHIP PLAN I ON PAGE 47



The Manhasset — NOTEWORTHY FOR ITS LARGE ROOMS — Price Given On Enclosed Price List WE PAY THE FREIGHT



Architecturally, the Manhasset is thoroughly modern and splendidly proportioned in every detail. You will observe that this Aladdin is distinguished for its larger than usual rooms. The living room, bedrooms and kitchen all have well placed windows affording cross-ventilation. Covered entrance opens into vestibule with coat closet and arched opening to living room of both plans. Bedrooms and bath are separated from living room by a convenient hall, with extra closet. Generous wall space in the living room is accomplished by placing a high mullion casement window at the end. Five and six closets offer good storage facilities. Two plans are shown here, one with two bedrooms and one with three bedrooms. Detail specifications will be sent you on request.



BUILD YOUR OWN HOME

ALADDIN SPECIFICATIONS

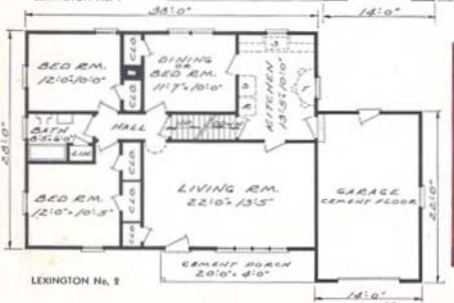
A study of Aladdin specifications will reward you with the knowledge that nowhere can be found quality to exceed that which is a part of Aladdin Houses. Finer materials cannot be had for we have used the greatest care to seek out and use the very best. Write for detail specifications of the home of your choice and learn how Aladdin furnishes complete materials down to the minutest detail.



The Lexington — Adapted from Colonial Times —

Price Given
On Enclosed
Price List

**WE PAY THE
FREIGHT**



The traditional simplicity and economy of early New England settlers inspired the architectural plans or designs of their rugged homes. Colonial homes are still sturdy and remain as sound as when built two hundred or more years ago. Aladdin designers have truthfully followed the functional form while incorporating the modern features of scenic window and attached garage. Two plans are presented for your choice, one with two bedrooms and one with three bedrooms. There is ample reason to believe that the high quality of all Aladdin materials will give a life to your Aladdin home comparable to that of the first Colonial homes. If you desire to finish off the second floor for two bedrooms, write us for plans and prices. Write for detail specifications and further information.



Aladdin Dining Room
In Full Color

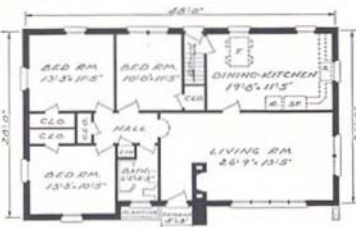


The Brentwood—One of ALADDIN'S Best —

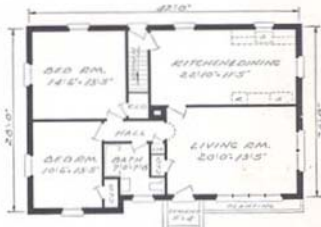
Price Given
On Enclosed
Price List

WE PAY
THE
FREIGHT

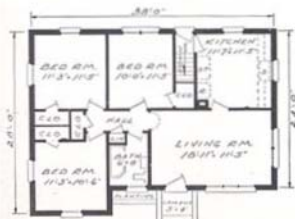
Approached from any side, here is a home of impressive beauty. Our designers were inspired by the inclination of present-day home builders for well-proportioned dignity—with simple embellishment. The gabled projection of the bedroom creates a pleasant break in both the front wall and the otherwise plainness of an unbroken roof. Note the main eaves at the front which afford protection to the front entrance door. And the living room is beautiful with an exceptionally large Scenic window. Four plans are shown, one of two bedrooms and two of three bedrooms, and one of four bedrooms. Note the expansive "Dining-Kitchen" the latest and very popular inclusion of these two important rooms in one. This Aladdin Home is shown in brick veneer and priced without siding; we will quote price for siding for the outside walls. See picture of Brentwood with siding on Page 51. Write for specifications.



BRENTWOOD No. 1



BRENTWOOD No. 2



BRENTWOOD No. 4



BRENTWOOD No. 5



The Alvarado— Modest But Charming —

Price Given
On Enclosed
Price List

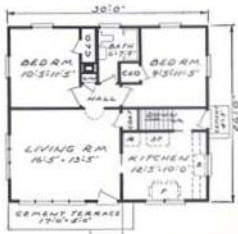
WE PAY
THE
FREIGHT

Modest in size but dazzlingly conceived in all details, this newest little home will charm its owner and all who observe it. The strikingly large Scenic window "brings the outdoors into the living room." Note the wall space available under the high windows in the living room. The exterior plan is beautifully proportioned. Two sizes are available, shown in the floor plans accompanying the picture of exterior. Both have the same exterior design. Whichever plan you select you will have a beautiful, modern and satisfying home. Send for detail specifications.



NO AGENTS OR DEALERS

Throughout all the nearly half century history of "Aladdin," the Company has never employed agents, dealers or outside salesmen. Aladdin houses can *only* be bought direct from the Company. No part of your purchase price goes out as commissions, discounts or profits to middlemen.



CAN'T BEAT ALADDIN

It is a real satisfaction and pleasure to have purchased the materials for our home from a company whose reputation for honesty and reliability are above reproach. We feel that the material furnished by you was far better quality and more reasonable than what we could have obtained locally. In fact, the contractors and lumber dealers refused to figure in competition with the prices you quoted. Mrs. V.G.W., Watertown, N.Y.

TAKEN FOR A RIDE

We built one of your homes 2 years ago, and were very well pleased with everything. We have had several people look at the houses since with intention of building one. Last year, we had a contractor build us one and we really got taken for a ride, and when we gave him the job he said he could do better than with buying one from you, but we found out too late we had made a mistake. Mrs. H.K., Brooklyn, Wis.



The Highwood—

BE IT EVER SO HUMBLE
IT'S OUR OWN

Price Given
On Enclosed
Price List

WE PAY
THE
FREIGHT

There is more pleasure and satisfaction in building and owning a small home than living in a rented one. "Rent money never comes back." What work you have done has been for yourself and not for a landlord. Our designers have taken a simple square plan and embellished it with a distinctive entrance porch, well-proportioned to its over-all size. Shutters are supplied to help the decorative window scheme. The extreme simplicity of design as pictured above assures great ease and rapidity of construction. An original design of front porch with supporting columns enhances the excellent proportions of the structure. The Highwood is shown below in two sizes. Both plans incorporate exceptionally large rooms for the over-all size. If this lovely little home interests you, write us and you will receive detail specifications by return mail.



The ALADDIN Organization's Long Experience
Means the Perfection of Machine Production



The Pasadena — For Modern Living —

Price Given
On Enclosed
Price List

WE PAY
THE
FREIGHT

Here is a home of ultra-modern design that can be placed either way on your lot. Frontage required can be as narrow as forty feet, or when placed the long way on your site, can still occupy a fifty foot lot. Take especial note



PLAN No. 1



PLAN No. 2

of the large Scenic window, in size, from floor to ceiling. You may have this window either as shown in the photo above or we will transpose it to the rear of the living room and place the mullion window, now in the back, at the end of that room. Plan No. 2 provides three bedrooms although it is the smaller of the two plans. Specifications will be furnished on request. Write us.

DESIGN IS OUTSTANDING

My home caused much comment and it may interest you that the only homes under construction this year are both Aladdin Homes. I can truthfully say that my home is the most beautiful in design and Quality is unsurpassed. This has been said by many parties who have seen and inspected my home. The VA inspector who checked my home commented on the high grade of material and excellent design and I certainly had no trouble in getting my VA loan. A. F. O., Dyersville, Iowa.

NO AGENTS OR DEALERS

Throughout all the nearly half century history of "Aladdin," the Company has never employed agents, dealers or outside salesmen. Aladdin houses can only be bought direct from the Company. No part of your purchase price goes out as commissions, discounts or profits to middlemen.

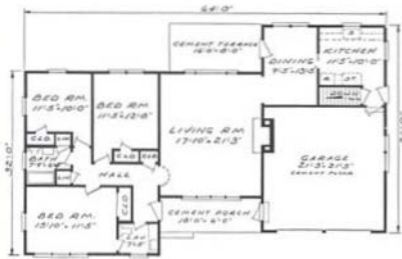
ALADDIN HOUSES ARE NOT PREFABRICATED



The Flamingo — ARRESTINGLY PICTURESQUE

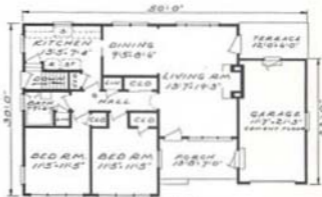
Price Given
On Enclosed
Price List

WE PAY
THE
FREIGHT



PLAN NO. 1

Aladdin designers present this masterpiece of modern design—the Flamingo. Architecture is the art or science of building and is beautifully exemplified in the picture above. Note the front porch and entrance are protected by the extending main roof. Two plans, one with three bedrooms and one with two bedrooms are worthy of careful study to fully comprehend their efficiency and all-around attractiveness. Unique outside wall treatment is apparent in the choice of V-cut ceiling, horizontal siding, vivid coloring and stone work. The latter is of course optional. Note the bead moulding adjoining the cave facade.



PLAN NO. 2

The grace, symmetry and color of the gorgeous tropical bird shown at the left, for which the "Flamingo" is named, was the inspiration of its creators. In form and balance, this house achieves dignity and captivating beauty.



The Sylvan — A CHARMING HOME for YOUR COMFORT

Price Given
On Enclosed
Price List

WE PAY
THE
FREIGHT

The Sylvan was first erected in Bay City and opened to the public by Aladdin as a model home. When you visit Bay City we will be glad to show you this most attractive home. We know it will charm you as it has won instant and unanimous approval of all those who have had the pleasure of inspecting it. This home is modest in size and dazzling in all details. The strikingly large scenic window brings the outdoors into the living room! Note the wall space available under the high windows in the left wall of living room. The exterior plan is beautifully proportioned. The three plans shown below give you your choice of either two bedroom or three bedroom plans and the further choice of building the home on a concrete slab or a cellar. Whichever plan you select you will have a beautiful, modern and satisfying home. Send for detail specifications.

HERE'S A HAPPY HOME OWNER

We cannot find the proper words of praise or begin to express our satisfaction in the quality, workmanship and planning of our Aladdin Home, the likes of which cannot be purchased at any price in this locality. H.L.O. Newport, R.I.



SYLVAN No. 1



SYLVAN No. 2



SYLVAN No. 3

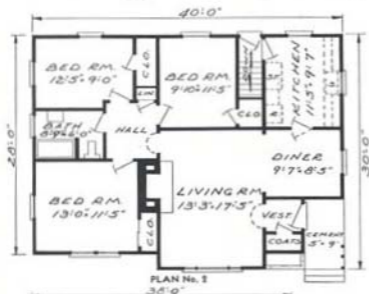
Page 62 lists Index of many
Questions answered in this catalog.



The Glen Cove—Smart Styling

Price Given
On Enclosed
Price List

WE PAY
THE
FREIGHT



Here is an exciting study in contrasts. The crisp, clean profiles, as viewed from front or side, appeal to your sense of beauty and surely express a dramatic originality. Contrasts are accomplished by the use of our large cedar shake shingles interspersed by wide siding in the gables and perpendicular siding around the entrance and Scenic window. Your choice of several colors for the cedar walls is available, together with white or pastel colors for the siding. Two highly interesting and efficiently designed plans are shown below, giving you a choice between a two bedroom and a three bedroom arrangement. Note the 19 foot kitchen-diner in Plan No. 3. This combination of functions is becoming increasingly popular in many larger and more expensive homes. Entrance vestibule with coat closet is a much appreciated feature. Complete specifications will be sent on request.

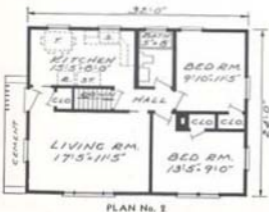
CARPENTER BUYS ALADDIN

Just a word to let you know our home is progressing rapidly as well as beautifully. I have received many wonderful compliments from the people here in Tamaqua on the beauty and quality of our Aladdin home. But being a carpenter and having worked on other homes, I don't have to be told by others. I know I did the right thing by buying thru your Company. As soon as it is completed, I will send you a photograph. S.D. Tamaqua, Penna.



The Laurel — HONEYMOON HOUSE — Price Given On Enclosed Price List WE PAY THE FREIGHT

The architectural lines of this little gem will disclose familiar features to the current popular demand of larger houses. The planning, construction details and materials are identical in every way to those in our largest and most expensive houses. The kitchen illustrated in Plan No. 1 shows you how careful planning can create efficiency in a limited space. Space heater's suggested location is shown in square marked "H". Plan No. 2 presents a more spacious living room, 17 ft. 5 in. x 11 ft. 5 in. Included in this arrangement you will note adequate dining-kitchen, three closets, cellar stairs and two bedrooms. We will send detailed specifications on request.





The Yorktown

DIFFERENT, INTERESTING,
WELL BALANCED

Price Given
On Enclosed
Price List

WE PAY
THE
FREIGHT



The exterior details of this home constitute a happy combination of originality and balance. The front projecting roof lends greater apparent depth and offers protection to the front entrance. The supporting columns are distinctly original to this plan. Full length window blinds edge all windows, and front door. While a Scenic window is shown in the end of the No. 2 living room, this feature will be substituted for any of the living room windows shown on the floor plans at left. The Yorktown is proving to be extremely popular with many Aladdin customers. Specifications will be sent to you on request.



QUALITY IS REMEMBERED LONG AFTER PRICE IS FORGOTTEN

All exposed lumber both inside and out in every Aladdin house is clear and free from knots or other defects—and is kiln dried. The framing lumber (dimension) and sheathing is free from any defects that might impair its strength and is thoroughly Air Dried and Seasoned.



The Royton — BEAUTIFULLY
PROPORTIONED —

Price Given
On Enclosed
Price List

WE PAY
THE
FREIGHT



Here is a house that will never grow old! For one thing it is of such a simple, charming design that it is not likely to be outmoded by the passage of time and like all Aladdin houses the Royton offers you the finest quality lumber to be had. No house is any better than the materials that go into it.

The Royton is surprisingly spacious for its overall size. Imagine a living room almost 22 ft. by 13 ft.! Plus a dining area, a spacious kitchen and two nice bedrooms. That is plan No. 1. If you prefer 3 bedrooms, plan No. 2 will interest you. Its living room is almost 24 feet long and it has a beautiful kitchen 13'5" x 9'9". Plenty of closet space too. For a quality home of traditional styling—a home that will give years of faithful service—The Royton cannot be beaten.

**GOOD HOUSES
NEVER
GROW OLD**

The original of every Aladdin customer's letter shown in this catalog is on file in Aladdin's offices. Complete name and address will be given upon request.

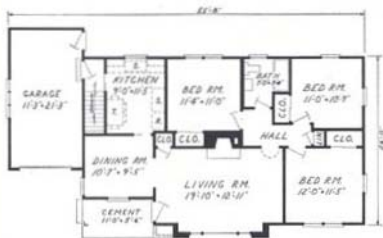


The Plaza — Flowing Lines —

Price Given
On Enclosed
Price List

WE PAY
THE
FREIGHT

The Plaza exemplifies what we mean by "streamlining" in modern house design. As sleek and smooth-looking as a new Cadillac, this unusual design has the flowing lines and the smart styling to make it something of a showplace in any community. Notice that everything is "under cover." Even the terrace leading to the front entrance in the illustration above is protected by the sweep of the overhanging roof. The dominant note, of course, is the big Scenic window that virtually brings the outdoors right into the living room. Variety is achieved by the way the living room is projected out beyond the house line, protected by the gabled roof. Another modern note is the garage set-back which permits a second window in the dining room of both plans. The Plaza is available in 2 and 3 bedroom plans. Modern as this design is, a traditional note is achieved in the red cedar "shakes" used for the exterior. The use of cut stone as shown in the illustration is optional with the purchase. We do not supply this material. Write for detail specifications.



PLAN No. 2



PLAN No. 3

Price Given
On Enclosed
Price List

WE PAY
THE
FREIGHT

NEW HOUSES

The echoing sound of hammers,
The scent of broken loam,
The fragrance of resined timber,
Where some one builds a home—

And I, who should be going,
Have always stayed my feet
Wherever a house is lifting
New walls beside a street.

The silver of straight nails flashing,
The gleam of a saw—and there—
A sudden new room shaping
Into a happy square.

A square so fraught with promise,
So buoyant with hope that I
Can scarcely wait for the plaster
And putty and paint to dry;

Or wait for the last clean sweeping,
For a van at the door—and then—
The things that make new houses
Homes—for the hearts of men.

—COSMOPOLITAN



The Ambassador — NEW AND SPARKLING — Price Given On Enclosed Price List WE PAY THE FREIGHT



BUILD IT YOURSELF AND SAVE

Here's a house of "young ideas"—a house as smooth-looking as a jet plane! While it is designed for today's modern living it has such free, unhampered charm that it is likely to retain its youthful look far into the years. And structurally, you can get no better "old age" insurance for a house than the fine quality lumber Aladdin supplies. The Ambassador is not only a young house but a cheerful house as well. Its many windows can provide vistas of flower, shrub and lawn from practically any room. Notice especially the great living room triple window stretching almost across the whole side of the room. It's almost like sitting in an observation car. Then there are the possibilities of the fireplace which can be constructed if desired. Whatever the season, summer or winter, there is cheerfulness. And the Ambassador offers a surprising amount of well-arranged living space. Both the two and three bedroom plans shown here provide for dining. Closets are more than ample; bedrooms well-planned and spacious.

For young people and for those young of heart The Ambassador is bound to have an special appeal.

WHAT ALADDIN'S GUARANTEE MEANS TO YOU

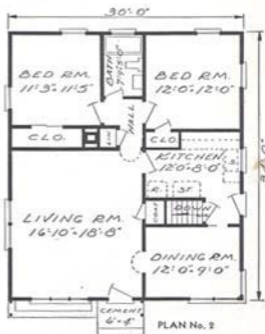
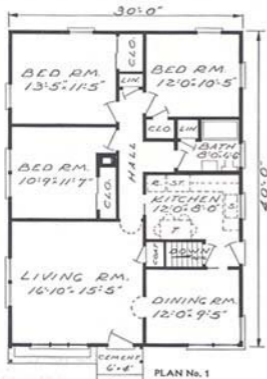
We started in business 48 years ago with the idea of providing low cost homes manufactured in our own mills from the finest obtainable materials. We have never deviated from this policy. The reputation we have built up for outstanding quality is our most precious asset. We intend at all times to maintain that reputation—to observe strictly the high standards home builders expect from us. That is why we can give the purchaser of an Aladdin house the most completely protective guarantee we know of. No one can offer you greater protection than we do when we say: "Satisfaction or Your Money Back."



The Coronet — RESPLENDENT IN FORM and COLOR — Price Given On Enclosed Price List WE PAY THE FREIGHT

Here's the New Look in Homes—a charming combination of unusual details and smoothly flowing lines. Notice how the main roof overhangs on both sides of the home. Also the unique pyramid effect achieved in the gable that serves to accent the main entrance and the large Scenic window. Other noteworthy details are the corner windows serving the dining room, and the use of both horizontal siding and V-cut ceiling for contrast and the modern use of built-in flower boxes beside the entrance-way. Today's trend is to individualize your home through the use of modern pastel colors for the exterior. Can you visualize how attractive the Coronet will be when painted

in the color of your choice? This modern home is available in both two and three bedroom plans, each with separate dining room. Study the floor plans shown here. Notice how spacious the rooms and how conveniently arranged, and excellent closet space is available. Send for specifications.



SAVED \$3000

We saved \$3,000.00 but if we had done more of the work ourselves we could have easily saved another thousand or two. We found the Aladdin Company a good company to deal with, and they did not misrepresent one thing, and they lived up to their Golden Rule statement. When I get ready to build another home it will be an "Aladdin" for sure.

L. K., Boise, Idaho

CONTRACTOR COMMENTS

The Contractor said, "Every piece of lumber looked so straight and clear from where I'm working. I came over to look at this job." We told him it was an Aladdin Ready-cut Home. He couldn't get over it. He said he did a lot of building but never had any material like this to work with. He thought the trim was out of this world—so clear, and not a streak or blemish of any kind. C.L.B., Columbia, Penna.



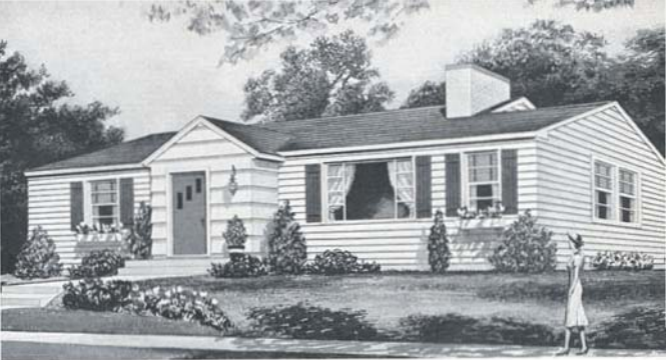
The Newport — An Original and Arresting Design —

Price Given
On Enclosed
Price List

WE PAY
THE
FREIGHT

As new, as fresh, and as lovely as tomorrow's colorful sunrise, the Newport is a shining example of all that is good in a modern and modest home. The usual severity of a plain roof is broken by the slight offset at the right. The porch roof, with ornamental iron columns, blends perfectly and protectively into the whole structure, while the Scenic window is well-proportioned and attractive. Note the left elevation where you find the V-cut ceiling in the gable offering contrast to the usual siding by separation at the ceiling line with dentils. The projecting mullion window completes the picture of originality and charm. In Plan One we offer a three bedroom arrangement, creating the increasingly popular living-dining room. In Plan Six the two bedroom arrangement can be converted into a four bedroom home by completing the now unfinished attic. Our price, as quoted, includes the stairway and enough sub-floor for the attic to cover a space 38 foot x 14 foot, through the center. We will be glad to quote you on the materials necessary to complete the suggested attic plan as shown at the right. Write us for prices.





The Vinewood—A Master Design —

Price Given
On Enclosed
Price List

WE PAY
THE
FREIGHT

Here is the Vinewood plan. Aladdin designers have captured the Colonial charm and simplicity while bringing it up to date with such interesting features as big scenic window, projecting and gabled front entrance and contrasting Cedar Shakes for the outside walls of the latter. Each of the two interior plan arrangements have been popular over a period of years, along with a different exterior. Plan No. 1 has two bedrooms with combination dining space and sun room. Plan No. 2 affords three bedrooms to accommodate a larger family. If either of these two plans meets your family needs you will be the happy possessor of a charming home.



PLAN No. 1



PLAN No. 2

BUILD IT YOURSELF

Page 46 explains how thousands of Aladdin customers have built their own homes without previous experience or outside help. You, too, can build your own Aladdin Home.



WE PAY THE FREIGHT



SAVE TIME—MONEY

Page 3 tells how and why you will save hundreds of dollars on your new Aladdin Home. Be sure to read it thoroughly and write us for names and addresses of Aladdin Homeowners near you.



The Alamo — Radiantly Modern —

Price Given
On Enclosed
Price List

WE PAY THE
FREIGHT

Over forty-eight years' experience in keeping abreast of the desires and needs of American home builders are summed up in the Alamo which will be one of the leaders in our new designs. The exterior lines are splendidly proportioned and in harmony with the hip roof and moderately styled projecting eaves. Note the large scenic window with

side lights which harmonize with the horizontal window lights in all other windows. The outside walls are finished with the newest development—long-lived red cedar shingles, grooved and etched to resemble the antique "hand-rived shakes" which are already dis-tained when you receive them. They, therefore, do not require the expense of painting. These shingles come in four shades.

Three interesting floor plans are shown for the Alamo. Whichever one you choose will result in the identical appearance shown in our attractive picture above. The brick work in front is not part of the foundation and may be omitted without detriment to the appearance of this charming Aladdin home. Write for specifications and further information.



**SOLD BY THE GOLDEN
RULE FOR FORTY-EIGHT YEARS**





The Palomar — Contrasting Brick and Shingles

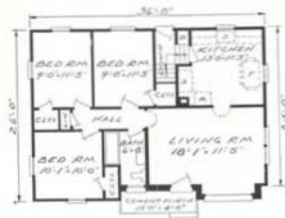
Price Given
On Enclosed
Price List

WE PAY THE
FREIGHT

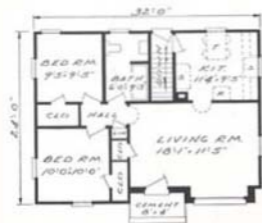
The deep shadow lines created by our heavy "Shake" shingles are a mark of beauty as pictured above. Simplicity dominates the square form of the Palomar, yet this very simplicity is artistic in its details. Maximum livability and usable living space are also accomplished in the square type of home. The four bedroom plan below includes, besides the bath, a separate lavatory or "Powder Room."

Write us for additional details and specifications. In our price for the Palomar we have included siding where brick is shown in the front wall. If you plan to use brick as illustrated, write us for allowance for siding and paint for that portion of the front wall.

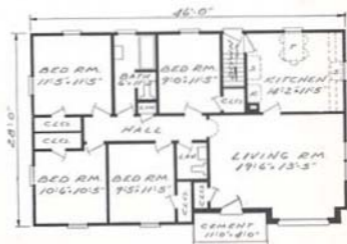
A study of Aladdin specifications will reward you with the knowledge that nowhere can be found quality to exceed that which is a part of Aladdin Houses. Finer materials cannot be had for we have used the greatest care to seek out and use the very best.



PLAN No. 1



PLAN No. 2



PLAN No. 3



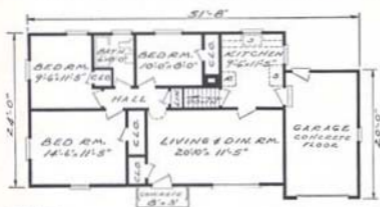
The Coronado—A Superb Creation

Price Given
On Enclosed
Price List

WE PAY THE
FREIGHT

Lovely to look at. Lovely to live in—that's the "new look" expressed in this charming home. A study of the above photograph is really necessary to fully appreciate its originality in form and entrancing detail. Of especial interest is the contrasting treatment of the outside walls. The "V" cut ceiling in the gables, matching the walls below the window line, with either wide

siding or large Cedar Shingles, whose lines run horizontally, bespeaks rhythmic contrast. Note the hooded entrance and beautifully designed Scenic window, which completes a scene of fascinating beauty. All plans are designed to give efficient and convenient floor space. Write us for specifications and further information.



PLAN No. 1



PLAN No. 3



PLAN No. 4

**QUALITY ENDURES
THRU THE YEARS—
READ PAGE 42**



The Sunshine — Classic Simplicity —

Price Given
On Enclosed
Price List

WE PAY THE
FREIGHT

"Effective Efficiency" aptly describes the architecture and planning of both arrangements shown below. The front elevation is interestingly planned with projecting gable and Scenic windows. We furnish for the front and side of the living room, also the front wall of the front bedroom in Plan B, our Style No. 2 Scenic window. Remarkable utilization of space is evidenced in both plans. In Plan B, which incorporates two bedrooms, you will note there is adequate closet space with linen closet arranged off of hall. Plan E has three bedrooms and also ample closet space with necessary linen space. We illustrate Cedar Shake Shingles for the lower portion of the home and Siding for the gables. When ordering this home, be sure to specify if you wish this type of outside wall treatment or prefer Siding for entire outside walls. The Aladdin Read-cut System simplifies the work astonishingly. Write for detail specifications and further information.



**BUILD YOUR
OWN HOME**

NO AGENTS OR DEALERS

Throughout all the nearly half century history of "Aladdin," the Company has never employed agents, dealers or outside salesmen. Aladdin houses can *only* be bought direct from the Company. No part of your purchase price goes out as commissions, discounts or profits to middlemen.





The Rio Grande — Masterpiece of Ranch House Architecture

Price Given
On Enclosed
Price List

WE PAY THE
FREIGHT



PLAN No. 1



PLAN No. 2

BRICK VENEER

Any Aladdin Home shown in the catalog with siding or shingles on the exterior can be built having a brick veneer exterior, which we do not furnish. Write us for the allowance for omission of siding, paint and nails if you wish to veneer the exterior with brick. We do not furnish any of our homes for a solid masonry exterior wall such as solid brick, concrete blocks or stone.

Every modern feature, every modern convenience of today's newest and finest home building plans will be found by a careful study of the Rio Grande. The picture above presents a beautifully proportioned structure, in ground elevations, walls and windows and roof lines. The ever popular sweeping gables do much to enhance its beauty, the front projection offering protection to the entrance. Extra wide Scenic windows face both the terrace and garden at rear of living room. Original in conception and highly convenient is the double combination bath room in Plan No. 1. Its

placement in this plan permits circulating access from living room to dining room and kitchen through front hall, as well as from living room through bedrooms and bath. In our price for the Rio Grande we have included siding where stone is shown in the front wall. If you plan to use stone as illustrated, write us for allowance for siding and paint for that portion of the front wall.

TOP QUALITY

We are very much pleased with our home. The lumber was all top quality, much better than we can buy locally. (This is not only our opinion, but also that of a carpenter with 22 yrs. experience).

D.K., Mt. Holly, New Jersey

HOME OUTSTANDING

As for our home, well, we can't say enough for it, and people say it's the outstanding home around here. If I were to build again, you may be sure it would be Aladdin, not only for the house, but your fine service.

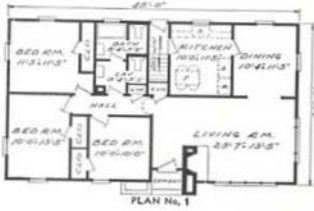
F.McK., Troy, New York



The Santa Fe — Resplendent in Detail —

Price Given
On Enclosed
Price List

**WE PAY THE
FREIGHT**



SPECIAL PLANS

The success of the Aladdin Read-cut System depends to a large extent on the reasonable standardization of designs and material sizes. For this reason we find it impractical to quote on special plans of any kind.

Aladdin designers have captured the newest trend in home planning with the presentation of the Santa Fe. It is fascinating in its simplicity, and because it is a perfectly square structure, it is also most economical in cost. The Santa Fe is shown with the large double course "Shake" Cedar Shingles, described elsewhere in this book. While the large chimney adds charm to this home its construction is optional. Two room arrangements are shown here, one three bedrooms and one with two bedrooms. The living room is generously provided with light, having two large Scenic windows. Ample closets are arranged in each plan. By sending for our specifications you will receive detail information on every part of this lovely home and further details in reply to any questions that you want answered.

The original of every Aladdin customer's letter shown in this catalog is on file in Aladdin's offices. Complete name and address will be given upon request.

ALADDIN FAIR DEALING

Everyone who has looked at the house, has remarked about the exceptional quality of the lumber, and incidentally, lots of people have stopped to look at the house as it was being erected. We wish to take this opportunity to thank you for your splendid cooperation, interest and fair dealing, and shall certainly recommend an Aladdin Home to any future builders.

R.C.G., Dayton, Ohio

WE SHIP COMPLETE HOUSE IN SEALED BOX CAR

HERE IS
THE Home OF **ALADDIN**
READI-CUT HOMES
General Offices Opposite Post Office

THE SOVEREIGN BROTHERS

Invite you to visit Aladdin to inspect our offices located in Davidson Bldg., at Fourth and Washington, our mill, and completed and finished houses.

"ONE SEEING IS WORTH A THOUSAND TELLINGS"

← Signs on all Roads Entering
BAY CITY, MICHIGAN



ALADDIN Mills at Bay City

Main Building 1000 Feet Long Above, bird's-eye view of Aladdin Mills. Here between five and six million feet of thoroughly dry lumber are housed under cover at all times in the five large Aladdin Mill Buildings shown above. No lumber is piled or yarded out of doors. This means that our lumber enters the cars directly from inside storage and reaches you without being subjected to rain or moisture. We do not buy green or partially dry lumber of any kind. No house is well-built unless thoroughly seasoned lumber is used. Dry lumber is pre-shrunk which prevents shrinking later, has superior nail holding qualities and is more resistant to decay. It is stronger and sturdier.



SHOWN ABOVE IS HOW MACHINERY TAKES THE PLACE OF HAND LABOR

One automatic Aladdin saw can cut, to exact lengths, 32,000 to 38,000 feet of 1x6" in an eight hour day. The operator simply slides the lumber against adjustable cut-off, presses electrically operated foot pedal, and the saw automatically moves forward—makes the cut with lightning speed and accuracy, and automatically returns to position. This is just one example of the substantial savings we pass on to you by up-to-the-minute machinery. The above photograph shows a battery of our Hydracut saws—capable of cutting to exact size 128,000 feet of fine lumber per day.

CAUTION

The following caution is written out of the unfortunate experiences reported to us by homebuilders who were enticed by unscrupulous local contractors or lumber dealers to use our plans but not our materials.

It offers are made to you to buy and build based on our plans, demand a written contract from the contractor. Especially important to you: Demand from the lumber dealer a written and signed bill of material covering the same details as our specifications shown below with a guarantee that there will be sufficient material of every kind to complete the house. Below is a sample of specifications furnished for each Aladdin home and all materials guaranteed to be furnished in accordance with the specifications.

A careful reading of the following will give you a clear idea of the completeness of materials and equipment which are included in the price of Aladdin Houses.

You also receive our forty-eight years of home building experience to guard you against mistakes of any kind. It has taught us the best construction methods, the best materials to use, the best way to prepare the building plans so every step of erection can be followed even though you have had no previous experience in building. And to complete our service to you, we guarantee that you will receive sufficient of all materials to complete your home according to the plans and specifications.

You Will NEED Every One of These MATERIALS Listed Below to Complete Your HOME

ALADDIN READI-CUT HOUSES TYPICAL SPECIFICATIONS

FOUNDATION WALL PLATES—2" x 6" furnished to set out each of our foundation wall, cut to fit.

GIRDER OR CENTER SILL—6" x 8" built-up of 2" stock, cut to fit.

FLOOR JOISTS—2" x 8" or 2" x 10" on 16" centers, according to span, cut to fit, with joist headers, and joist ties.

CROSS BRIDGING—1" x 3", for use between floor joists, cut to fit and mitered.

WALL STUDDING—2" x 4" on 16" centers, cut to fit. Triple studs at all corners of outside walls. Double studs around all door and window openings.

PARTITION STUDDING—2" x 4" on 16" centers, cut to fit.

FLOORING STRIPS—2" material provided for furring out wall for soil pipe.

WALL AND PARTITION PLATES—2" x 4" bottom plate and double 2" x 4" top plate, cut to fit.

CEILING JOISTS—2" x 6" on 16" centers, cut to fit and mitered with ceiling joist ties.

RAFTERS—2" x 6" on 24" centers, cut to fit and mitered. **RAFTER TIES**—In proper size to assure sturdy roof construction, cut to fit.

SUB-FLOORING—One inch sheathing lumber laid tight and cut to fit. Furnished to lay at right angles to floor joists.

WALL SHEATHING—One inch sheathing lumber cut to fit and furnished to apply at right angles to outside wall studing.

ROOF SHEATHING—1" sheathing lumber, cut to fit and laid tight for slate surfaced shingles.

BUILDING PAPER—Durable High Quality used between the sub-flooring and the finish flooring and wall sheathing and siding or shake shingles on outside walls.

ROOF PITCH—12" run, 9" rise. (1 1/4 pitch.)

EAVES—Type as illustrated in catalog. All materials provided necessary for completion. Eave troughs and down spouts not furnished.

ROOF COVERING—Heavy duty 3-in-1 thick-but asphalt slate surfaced shingles weighing 210 lbs. per square. Necessary flashing included.

CEILING HEIGHT—8' 4".

OUTSIDE WALLS—Choice of 1/2" x 8" bevel siding with metal corners or artistic pre-stained Red Cedar Shake shingles furnished in double course to lay 14" to the weather. Undercourse furnished unstained.

FINISH FLOORING—25/32" thick having a 2 1/2" face tongue and grooved beautifully grained Clear Southern Pine.

OAK FINISH FLOORING—Can be furnished instead of Pine at a slight extra charge. Write for prices.

OUTSIDE FINISH—Furnished in standard lengths and widths. Clear grade. Mitered for gables.

OUTSIDE MOULDINGS—Furnished where required.

DOOR FRAMES—Cut to fit, lock joint construction—bundled—ready to assemble.

INSIDE DOORS—2 panel design highest grade Douglas Fir. Flush Doors optional at small additional cost. Write for prices.

OUTSIDE DOORS—Front door Style as illustrated. Rear door Style No. 8.

WINDOW FRAMES—Cut to fit, lock joint construction—bundled—ready to assemble.

FLOWER BOXES AND WINDOW SHUTTERS—Furnished with glass.

CLOSET SHELVING AND HOOK STRIP—For ALL closets. **WINDOWS**—All sash glazed with high quality glass. Style and size as shown in catalog illustration.

INSIDE TRIM—Accurately machined Modern narrow moulded design with nosed edge baseboard and base shoe. Beautifully grained Selected Arkansas Soft Pine.

ARCHES—Where arches are shown, we will furnish metal forms to build a curved plastered arch or if you use wall board or plaster board, we will furnish frame and trim for a square cased opening. Tell us the kind of material and thickness you will use when you place your order.

BASEMENT STAIRS—Furnished as shown in plan, cut to fit, and manufactured of the finest quality stock. All stairs are cut and ready to assemble on the job.

ATTIC ACCESS PANEL—We furnish paneling and inside trim for an opening in the ceiling usually placed in the hall so you can have access to your attic.

PLUMBING PANEL—We provide paneling and inside trim to arrange a panel giving access to your plumbing in your bathroom.

INSIDE DOOR HARDWARE—Brass finish latest design tubular lock sets with sparkling glass knobs.

OUTSIDE DOOR HARDWARE—Brass finish cylinder lock set for front and rear door. Attractive tubular design.

DOOR BUMPERS—Included for all inside and outside doors.

DOOR HINGES—Furnished to match other hardware.

WINDOW HARDWARE—All Check Rail windows are equipped with genuine Vikre sash holders installed in factory which hold window in any position. Sash locks and sash lifts furnished. Where a casement window is shown the proper casement window hardware is furnished.

NAILS—Furnished in proper size for all work and in a quantity sufficient to complete the home.

LOUVERS—Furnished for gables of proper size to provide sufficient ventilation. Roof louvers and eave louvers for hip roofs.

OUTSIDE PAINT—Three coats furnished for all outside work. First Quality house paint, furnished in choice of colors. Oil, turpentine, putty, etc., furnished in ample quantities.

INTERIOR WOODWORK FINISH—For all doors, windows and interior woodwork, we furnish three coats of quick drying spar varnish or three coats of interior semi-gloss paint or three coats of interior high gloss paint. Specify type of interior woodwork finish desired when you place your order.

FLOOR FINISH—We furnish three coats of quick drying mar resistant varnish. When Oak flooring is ordered we furnish natural wood filler and two coats of quick drying mar resistant varnish.

INTERIOR WALLS AND CEILINGS—Because of the many kinds of lining materials now used, we have not included any lining materials in our prices. Rocklath, plaster, wallboard and plasterboard are available in any locality at about the same price. We recommend that you secure your lining materials from your local mason contractor.

PLASTER GROUNDS—If you plan to plaster your home, tell us when ordering and we will supply plaster grounds. Plaster grounds are wood strips furnished to run around all inside door openings and at the base of all walls and partitions as a plaster guide for a correct plaster thickness.



The El Rancho—Western Beauty —

Price Given
On Enclosed
Price List

WE PAY THE
FREIGHT



PLAN No. 1



PLAN No. 2

Advanced house design is perfectly expressed in both exterior features as well as interior plan of the El Rancho. While cut stone is used in the projecting living room, enhancing the beauty of the whole, this feature may be altered by the use of either siding or "Shake" Shingles. In our price for the El Rancho we have included siding where stone is shown in the front wall. If you plan to use stone as illustrated, write us for allowance for siding and paint for that portion of the front wall. Graceful roof gable-ends are splendidly proportioned. The entrance door is covered, protecting family and visitors in inclement weather. Two sizes and plan arrangements are shown here. A special feature is the convenience of a complete bath room AND a powder room to service three bedrooms in the No. 1 plan. This plan includes five closets and two linen closets. Write for detail specifications.

Two sizes and plan arrangements are shown here. A special feature is the convenience of a complete bath room AND a powder room to service three bedrooms in the No. 1 plan. This plan includes five closets and two linen closets. Write for detail specifications.



EL RANCHO No. 2, built by Mr. C. G., Akron, Ohio

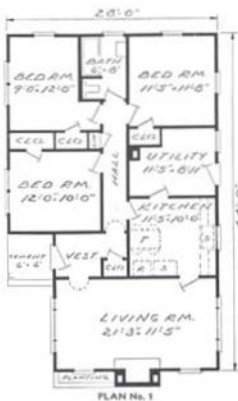


The Graystone—

DESIGNED FOR A
NARROW LOT

Price Given
On Enclosed
Price List

WE PAY THE
FREIGHT



Aladdin designers have created this charming home for those who appreciate the best in modern design. Notice the nice contrast achieved in the "V" cut ceiling at front of living room. Notice also the modern ornamental metal column which supports the projecting roof and which in turn protects the entrance way. Two interesting plans are shown here, both of which are designed to permit building of either on a narrow lot, yet each will be equally attractive when facing the long way on your lot. Write today for detail specifications on this fine home.



Aladdin Know-How will save you TIME AND MONEY

When you send your order for an Aladdin House, the one purchase eliminates the complicated problem of your trying to figure out the number of pounds of each of the ten different sizes of nails used in the construction of a house. Also number of feet of 2x10's, 2x8's, 2x6's, 2x4's, 2x3's and 2x2's needed to frame the house. How many feet of sheathing needed for sub-floor, walls and roof. How much siding, finish flooring, rolls of building paper, and squares of shingles for the roof. How many doors and windows of various sizes, gallons of paint, stain, varnish and turpentine. In fact, there are dozens of other items to think about, such as base mould, base shoe, closet shelving, matched ceiling for under eaves, cellar stairs, lock sets, hinges, sash lifts, door bumpers, etc., unless you buy and build the modern way. The Aladdin Ready-Cut Way. Then there is only one purchase that brings you all these materials in the proper amounts and guaranteed to complete your home. NO WASTE, NO OVER-BUYING ON SOME MATERIALS AND UNDER-BUYING ON OTHERS. OUR "KNOW HOW" WILL SAVE YOU MONEY, TIME AND WORRY.

UNTO THE THIRD GENERATION GRANDFATHER SON and GRANDSON

EACH STARTS HIS MARRIED LIFE IN HIS OWN NEW ALADDIN HOME

Aladdin home owners who built and have lived in their Aladdins for over thirty years here testify unsolicited to their satisfaction and happiness. AND their sons and their sons' sons therefore come to Aladdin for satisfaction, safety and economy.

September 24, 1962
My husband's grandfather built one of your Aladdin homes, every bit of 37 years ago. It's called the Hudson and it still looks beautiful.
Mrs. F.C.C., Blackwood, N. J.

March 17, 1962
In 1925 I purchased from your company one of your Aladdin homes. I was so pleased with it that I have been recommending your homes to anyone that mentions building to me.
I would like to purchase another one. Would you please send me the necessary information and a catalog?
Mr. J.F.K., Pleasantville, N.J.

July 25, 1962
Was pleased to recommend your homes because of your very fair treatment to me. My Aladdin home is seventeen years old now, but still like new. Has given me wonderful security, situated high roads and has given me low up-keep, etc.
Mrs. J.J., McKeesport, Penna.

May 14, 1962
Please send Catalog #CM-35. Enclosed find \$5c. I plan to build on Lake Oswego and am looking for ways to get a better home for less money. I lived in one of Aladdin's homes in Portland. The house was very satisfactory and is a credit to the pre-war housing industry.
W.D.W., Portland, Oregon

August 21, 1962
Twenty-one years ago next month, we purchased your Aladdin "Shersbrooks" home. It has proved very satisfactory in every way. My wife and I will always be one of your "Aladdin" Boosters. Thanking you,
I am
Mr. R.P.C., New Berlin, N. Y.

Gentlemen:
My grandfather built an Aladdin house in 1928 and it is still perfect. Said to be the best built house in town. Now my husband would like to look over your latest catalog.
E.H., Premont, Texas

December 28, 1962
We have for the past twelve years enjoyed the comfort of our Aladdin home and hope that we may continue to do so. We have had many compliments on our little home and much appreciate having it. Again thanking you, we are
Mr. & Mrs. J.L.G., Ramsey, Ill.

March 6, 1963
Please send one of your catalogs to me. We once lived in one of your houses, the "Fernside," and since selling it we have never been able to be quite satisfied. We could find no flaw in the house and the ones who purchased it love it as much as we did.
J.H.M., Live Oak, Florida

February 13, 1963
I would appreciate it greatly if you would send me your Catalog No. CM-12. My parents bought an Aladdin home 25 years ago and are still living in it. It is very satisfactory to them and myself. Thank you for your cooperation.
F.J.S., New Hyde Park, L.I., N.Y.

Dear Sirs:
April 14, 1963
Please send me your catalog of Aladdin Ready-cut Homes with prices. I am interested in building. My great-grandfather built one of your Aladdin homes in the year 1918 and it still stands to this day in excellent condition. He is dead about 20 years now, but my mother lives in their home. Said to be the best built house in the town.
J.T.O., Gold Coast, British West Africa

Gentlemen:
About 20 years ago my grandparents built a home purchased from your company. I am happy to tell you it is still in perfect condition and a good looking home. As we are interested in building, would like the catalog described in the enclosed advertisement.
Mrs. W.P., Alfred, N.Y.

BORN AND RAISED IN ALADDIN

May 23, 1963

I was born and brought up in an Aladdin "Sunshine" built in 1920. The house is still in perfect condition. I received your catalog and I am very much interested in the Ingleswood #3. I would like it very much if you could send me the names and addresses of some people in Middletown, New Haven, Hartford County who have built the "Ingleswood #3." I would like to visit with the people and perhaps get some useful information.
I.L.C., Haddam, Connecticut

July 18, 1962
Back in 1929 my wife and I purchased a "Roseland" from your firm, we like it a whole lot. It has given us much pleasure for 33 years, stood up 100%, never had any expense since its purchase. Even to this day there is not a door or window that sticks. Some construction.
Please send me your latest booklet on Ready-cut Homes.
Mr. J.E.C., Spruce Creek, Pa.

Oct. 6, 1962
We received your catalog Friday, P.M. We are not planning to build before spring, but we would like to have the plan of the Brentwood #1. We are living in an Aladdin Home we built over 28 years ago.
Mr. E.L., Marshalltown, Delaware

Feb. 8, 1962
My Dad built one of your homes years ago. The quality and service you rendered him 34 years ago held true for me, and I do not hesitate to give my recommendations to your firm. As a matter of fact, I need do no more than show them our home, as it speaks for itself.
The quality, quantity and service supplied by you was certainly Grade A No. 1 and far exceeded anything that can be had locally.
Del Mar
Mr. C.A.M., Attleboro, Mass.

Oct. 22, 1962
I have intended to write you for some time. We were very well pleased with the way our house went up and the material was a high grade. Our carpenter was amazed at the grade of lumber, and I heard him, on several occasions, tell people it was the best lumber he had worked with in several years. He has been a carpenter over forty years. My wife and I would be more than pleased to recommend your product.
P.J.McC., Cedarville, Ohio

April 1, 1963
I would like some additional information on the Brentwood #1 with shingle siding.
By coincidence, the building inspector visited one of your houses over 42 years ago and he said, "It was one of the best he ever built." His opinion was that I was getting a better buy from you than locally.
D.A.B., Malden 48, Mass.

**COMPLETE NAME AND ADDRESS FURNISHED ON REQUEST
QUALITY ENDURES THROUGH THE YEARS**

Good Houses Never Grow Old

HOW WILL MY NEW ALADDIN HOME LOOK
35 YEARS—40 YEARS—45 YEARS FROM NOW?
ALADDIN Presents Here Photographic Proofs Covering the Past 45
Years: That ALADDIN Homes Survive the Ravages of Time!



44 YEARS The above photograph at the left shows the Sovereign Brothers' father "parked" with his driving horse and cutter in front of the Aladdin Home of O. E. Sovereign in the winter of 1910. Picture at right was taken in the summer of 1952—44 years old.



Built 46 Years Ago—Above Photographed—1952



Built 41 Years Ago. PHOTOGRAPHED 1952



Built 41 Years Ago—Above Photographed 1952



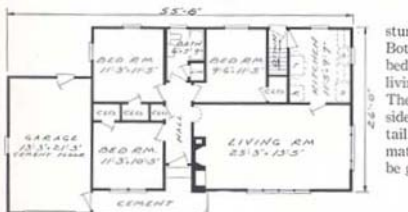
Built 36 Years Ago—Above Photographed 1952



The Santa Barbara — An Exterior of Arresting Contrasts — Price Given On Enclosed Price List — WE PAY THE FREIGHT



PLAN NO. 1

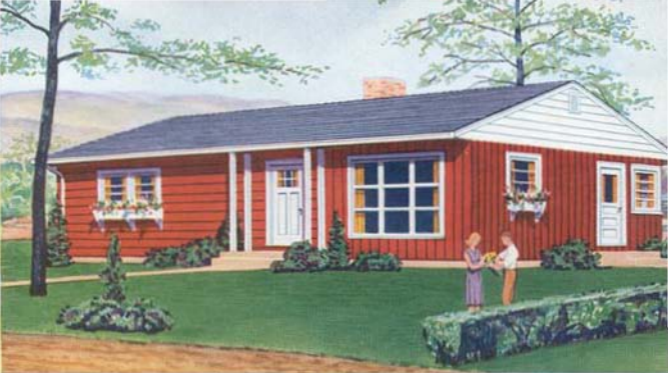


PLAN NO. 2

Almost dramatic in its harmony of blending colors, and contrasting exterior wall materials, this latest Aladdin by our designers will take a leading place again in 1954. It is distinctively different in many ways. The covered front entrance pleasantly merges with the protected garage entrance. "V" Cut ceiling on front wall breaks, in an interesting fashion, from the Cedar "shake" Shingles which enclose the living room. A metal post graces the approach, while a sturdy chimney completes the picture. Both plans shown here include three bedrooms, and in each especially large living rooms with ample wall space. The larger plan No. 1 includes, besides the bath, a "Powder Room". Detail specifications and further information about the Santa Barbara will be gladly sent to you on request.



ALADDIN is the only Readi-Cut manufacturer which cuts floor, roof and wall sheathing to exact size and length for nailing on frame. This pre-cut and fitted lumber saves the builder many hours of labor.



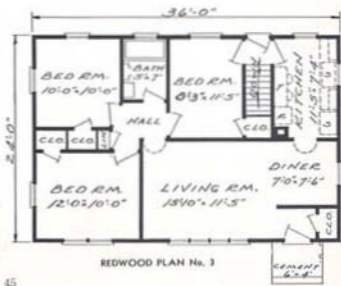
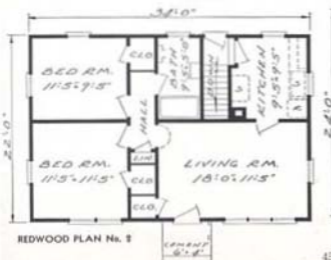
The Redwood—As New, Modern and Fresh as Tomorrow's Sunrise

If you made a trip through New England these days, you would discover the increasing popularity of the old time decorative schemes for both new and old houses—the dark red body paint with pure white trim. Thus we show the Redwood above. Of course you may have any colors that you prefer. All three plans here are adapted for narrow lots, or the house may be placed fronting the long way. Large Scenic window is incorporated in each plan and the horizontal siding and "V" cut ceiling lends an interesting contrast. Write for detail specifications. Prices on enclosed price list. We pay the freight.



ALADDIN'S MATCHLESS GUARANTEE

What Induces Us to Supply Such Matchless Quality? Aladdin believes the modest home merits the same goodness as the mansion. We have nailed Aladdin quality on the highest attainable pinnacle and have kept it there. While these are excellent reasons for the careful, thinking home buyer, the real undebatable reason is summed up in the goodness, soundness and the thoroughness of the quality of Aladdin Houses. Aladdin's Guarantee: Satisfaction or your money back.



"DO IT YOURSELF"

The recent tremendous public interest in the "Do It Yourself" movement is added, and is a complete endorsement, of Aladdin's "Build Your Own Home" plan—which was first offered to the public 48 years ago. The Aladdin Ready-cut System saved home builders from 25% up, when carpenters worked for 25c an hour in 1906. Today it saves 25% of the \$2.00 an hour carpenters are currently receiving. "Can I do it myself?" you may ask yourself. Read the answers to this question below, of a few of the thousands of Aladdin customers who have built their own homes at savings of hundreds and thousands of dollars. Complete name and address furnished on request.

Build It Himself—Saved \$4,000.

I am tremendously pleased with my Aladdin Home. It is A-1 quality and I can honestly recommend it to anyone interested in building a home at a saving. A comparable home to my Brentwood #1 would cost at least \$4000.00 more than what it cost me to erect it myself.
Brentwood #1
C. G. M., Cedarburg, Wis.

June 2, 1953

I hired no carpenter as I had some experience in rough work. I also did the plumbing and heating myself for our Graystone.
Graystone #1
R. C. W., Chester Depot, Vermont

June 8, 1953

It's Fun to Build It Yourself.

We have had many compliments on our Pasadena home, and considering my husband and I did all the work, it makes a person feel proud. It's fun when you build yourself; you really surprise yourself at what you can do along different lines such as plumbing, electrical work, and so on.
Pasadena #2
Mrs. N. F., Warren, Penna.

May 14, 1953

We are coming along good with our Graystone, Plan 3 as we are doing it alone and we just started last weekend. This ready-cut business sure speeds things along.
Graystone #1
M. A. C., White River Junction, Vt.

August 10, 1953

We Were the Builders—My Wife and I.

You asked about our builder. We were the builders—my wife and I. We erected the cellar, the house, completed the kitchen and bath—then moved in—all in about 3 months' time. It was the first time that we ever attempted anything like it and we followed your easy directions with no trouble.
Pasadena #2
C. W. S., Elmira, New York

June 15, 1953

I had two carpenters working part of the time. But we did most of it ourselves and had no trouble. Everything fit perfect and was easy to build. We moved in the place in about three months, completely finished.
Santa Fe #2
Mrs. B. H., Annyville, Pa.

September 5, 1953

Aladdin System Easy to Follow.

We were well pleased with our Royton #1 and construction has progressed rapidly. Before starting construction, I sorted the material so it would be readily selected before going ahead. As I erected the house, I would make a material list and go to the material area and select the material necessary for that part of construction. This system worked like a woman shopping in a super-market with her list of the goods she needed and knowing just where each article was placed, making selection easy.
Royton #1
Mr. C. M., Fulton, N.Y.

September 2, 1953

I am building this house in my spare time while attending college full time. I would consider it a privilege to recommend an Aladdin House to my friends.
Mayfair
Mr. E. R. O'B., Washington, D.C.

August 31, 1953

Husband and Wife Did All the Work.

We think we have the most beautiful home in town. My wife and I have built the entire house ourselves, and even though I have had no experience whatever at building, we were able to complete the job. We are more than pleased.
Parkway #1
J. F. T., Hillsboro, Ill.

September 15, 1953

Proud of Their Own Work.

My husband, who works in a paper mill, had only been a contractor's helper, while I had never read a blueprint before. We are proud that one man and woman could build such a dwelling.
Mayfair
Mrs. E. G., Watertown, N.Y.

October 8, 1953

We had no experienced carpenter employed at any time during the building of our Brentwood, Plan 3 home. My husband, Charles, and myself, with the occasional help of a brother-in-law, did all the work.
Brentwood #1
Mrs. C. G., LaSalle, Michigan

August 25, 1953

Saving Labor Saves Money.

My husband has done his own carpentry on our Santa Fe #1 home. In fact, he did all the work except the plumbing, heating and wiring. The explanations for construction which were included makes it possible for any person to build a lovely home, thus saving high labor costs.
Santa Fe #1
Mrs. L. R., Castleton, N.Y.

May 20, 1953

One of my buddies and I did all of the carpenter work on my Vinewood #2 with, of course, the help of a few relatives.
Vinewood #2
K. J. D. L., Kempton, Pa.

May 28, 1953

No Previous Building Experience.

I would like at this time to tell you how well pleased I am with the way the house went together. Before building my Redwood #1 I had never attempted any carpenter work. I was well pleased with the accuracy of the cuts of lumber. My ceiling joists and rafters nailed in perfectly.
Redwood #1
S. F., Fulton, N. Y.

June 4, 1953

May I say that the ease in construction of putting the parts together for our Lexington #2 home was something we had not thought possible. None of our men knew anything about construction but when we had the Dry Wall men come in, they said they hadn't worked in rooms as square as ours for months.
Lexington #2
Rev. L. H. C., Topeka, Kansas

June 8, 1953

Moved in Three Weeks After Starting Building.

We would like to tell you that we are very happy with our Brentwood #4 home. Moved in it three weeks after we started building. Found everything to fit easily and to perfection.
Brentwood #1
Mr. & Mrs. L. P., Ottawa, Kansas

August 31, 1953

Inclosed you will find a picture of my new home, Jasmine #1, purchased from you in July of 1952. I built it all myself with a little help from my son-in-law. I am very much pleased in every way with my home. It went together nice, everything fit perfect. Very good lumber, better than I could buy around here and a wonderful company to deal with.
Jasmine #1
A. W. J., Marion, New York

October 18, 1953

Wife Never Hammered a Nail Before.

My husband and I are having a great time building our Ventura house. I've helped him with every board so far. The neighbors all marvel as I never hammered a nail before. My husband is no carpenter either. I think it is lots of fun. Maybe we will build another house next summer.
Ventura
Mrs. W. S., Brookfield, Ohio

August 27, 1953

You save when you build the ALADDIN way because factory cutting and fitting reduces the labor cost 30% and lumber waste 18%.



CAMBRIDGE

The Cambridge

The three bedroom arrangement of the Cambridge below offers everything in a home designed for living. The kitchen is at the front with dining and living room at rear. We know this plan will please the most critical home-builder. Send for detail specifications for Cambridge No. 3. See page 9.



CAMBRIDGE PLAN No. 3

ALADDIN'S
48 Years
Experience Makes
Your Homebuilding
A Pleasure

Page 2 introduces to you some of the many Aladdin folks who will work with you on your home building project and give you expert advice.

The ALADDIN Name has become a mark of QUALITY

YOU PAY NO AGENT'S COMMISSION

Throughout all the nearly half century history of "Aladdin", the Company has never employed agents, dealers or outside salesmen. Aladdin houses can *only* be bought direct from the Company. No part of your purchase price goes out as commissions, discounts or profits to middlemen.



BREEZEWAY and GARAGE

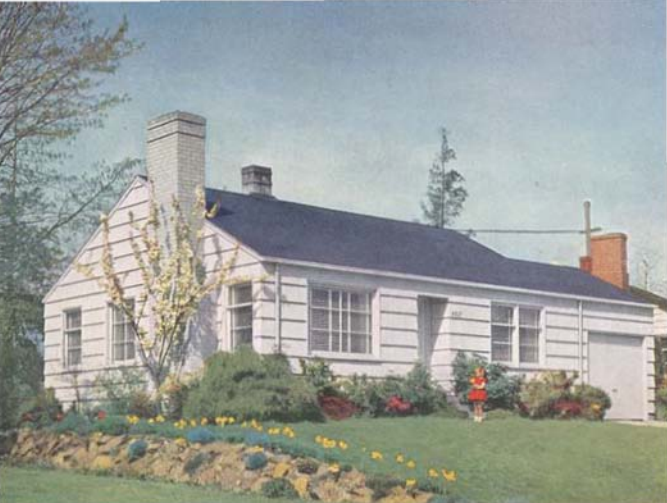
The photo above pictures the ever popular breezeway connecting the house proper with the garage. The breezeway can be used as a shady porch, outdoor dining place and a covered space for garden furniture and children's playthings. It affords excellent protection to reach the garage in inclement weather. We can quote on furnishing the above described breezeway with garage (for one car or two cars) for most any Aladdin home shown in our catalog.



FRIENDSHIP

The Friendship

At the left the photo illustrates the Friendship No. 1 as illustrated on page 14 with carport and storage space for tools. We can supply the Plan No. 1 with carport and tool space if requested. Send for detail specifications and price.



The Parkway—New and Modern—

Price Given
On Enclosed
Price List

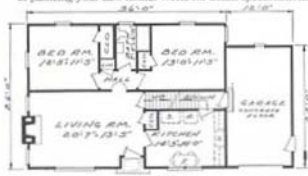
WE PAY THE
FREIGHT

This actual color photograph of the Parkway pictures one of our most charming modernized Colonial designs—truly a "Home of Tomorrow." Here, too, we are showing the newest thing in insulated heavy outside cedar shingle walls. Note that deep shadows thrown by the thick base

of the shingles soften the severity of plain white walls. Under each shingle is an undercourse of unstained cedar giving added insulation value. All shingles are dip stained when received by you which further saves the cost of painting your new home. Write for detail specifications.



PLAN 1



PLAN 4



PLAN 5





Inspiring Equipment and Decoration for the Kitchen of Your ALADDIN Home

The kitchen, of late, has fast been coming to the front, as that part of the modern home of greatest importance. It demands the greatest amount of time by the home-makers. It requires the greatest expenditure of work and effort by the home-maker. It absorbs more thought and planning than any other part of the house, by the home-maker. It consumes the largest part of the home's daily, weekly, and monthly expense, and—Investment in its contents and equipment surpasses any other part of the house. In realization of these truths, today's planning tends to enlarge the kitchen to create a "dining-kitchen," to eliminate the dining room and to encourage all the family to join the home maker, the housewife, at least during more than the three meal periods of the day. Your kitchen can be made a joy, to accomplish its daily routine, if its cabinets and other accessories are planned with thought and care. And if the home-maker chooses her favorite color harmony. The cabinets shown in the accompanying pictures are skillfully planned for each Aladdin Home in our catalog.



ALADDIN KITCHENS

Our kitchens are light and airy, and arranged for step-saving efficiency. To further this important item in the formation of any home, we have made suggestive arrangements for each Aladdin Kitchen shown in this book. Aladdin Cabinets bring you the warmth and beauty of natural grain wood, beautifully precision made from the best quality hardwood, modern composition wood, and fine old English antique hinges and pulls. You will point with pride to your kitchen using this Birch natural grain wood. Or, if you prefer white enameled cabinets, we can furnish them as illustrated at the left. This cabinet is finished inside and outside in this velvety enamel. Our kitchen cabinet prices do not include sink, plumbing fixtures, linoleum counter cover or metal mouldings for same. If knotty pine walls are desired as illustrated at the left, write for prices on this material.

Optional Materials and Equipment

SCENIC WINDOWS

Scenic windows illustrated below are practical and attractive. They bring the outdoors in as part of your home and make the whole world, for as far as you can see, an attractive scene from your new home. Style No. 7 has a stationary center and sliding sash on each side, allowing ventilation. Style 7 is illustrated for the Royton on page 26. Style No. 8 is supplied in one size only—7' 0" x 6' 0". Scenic window No. 10 is approximately 9'6" x 6'0". It is illustrated on page 22. It is divided into twelve lights. We also furnish this same type of window, the Style No. 9, which is 7'x6' and is illustrated on page 29. Style 9 and 10 Scenic windows are shipped knocked down for easy handling, and are cut and machined, ready to assemble. Write for prices on window changes. These windows are not sold separately from our houses but are included where shown in plans or illustrations.



SCENIC WINDOW STYLE 7



SCENIC WINDOW STYLE 8



SCENIC WINDOW STYLE 10

SHINGLES Instead of wood siding for the outside walls we can furnish artistic shingles of long-lived red cedar grooved and etched to resemble the antique shakes as illustrated on page 32 and also on page 48. The shingles are laid at a wide exposure with a double thickness at the butt. You have your choice of either siding or these shingles at no difference in price. Shingles come in Green, Gray, Burgundy, Brown, or White.

ARCHES We include in the price for each home square cased openings or materials to build a curved plastered arch where arch openings are shown in the floor plan. We will furnish either type with your home. If you use dry wall for the interior, such as plaster board or wall board, we will furnish square cased arches as the curved arches can be used only when you plaster the interior. Specify the kind you want.

CELLAR WINDOWS We can furnish a complete cellar window unit already assembled with hardware in place, including glazed sash and the cellar window screen, for either a 2 block high opening or a 3 block high opening. For either cellar window leave the foundation wall opening 32½" wide. It is not necessary that the windows be shipped before the house as they can easily be set in the foundation wall when your materials arrive. Write for prices.

OAK FLOORING "Select" oak flooring can be furnished in any or all rooms of any Aladdin home. If wanted, write us for prices and state in what rooms you will wish to use the oak flooring.

KITCHEN CABINETS Kitchen cabinets can be furnished in accordance with catalog floor plan layouts. These kitchen cabinets are shipped to you direct and are complete—fully enameled (white) outside and inside, or if you prefer, natural finish we can quote on a natural Birch cabinet. Doors are hung, friction catches applied, door and drawers prepared for pulls. These cabinets are finished in mar-resisting, high lustre white enamel or varnished natural. See page 49. Write for prices.

FOUNDATION PLANS A foundation plan for the home of your selection will be mailed you complete with instructions for laying out the foundation wall upon receipt of a deposit of \$5.00. Be sure to get the foundation plan for your home before starting your foundation wall.

**PRICES QUOTED ON ABOVE ITEMS
ARE FOR SHIPMENT ONLY WITH YOUR HOUSE**

VISIT US AT BAY CITY

You are cordially invited to visit us at our Bay City offices located at Fourth and Washington, across from the Bay City Post Office. We will be proud to show you through the Aladdin Mills where you can inspect our lumber and see our houses being manufactured. We can also show you some of the many Aladdin Homes built in Bay City.

THE BRENTWOOD

In order to give you an idea of the attractiveness of the Brentwood in siding, we show a photograph of it with this particular exterior treatment. The Brentwood is regularly priced for a brick veneer exterior but we will gladly quote on furnishing siding, giving you an exterior as illustrated at the right. Write us for prices on the siding. See page 17.

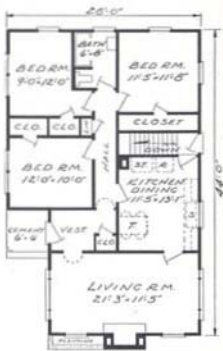


BRENTWOOD—Shown with Siding Exterior



THE GRAYSTONE

The Graystone is a typical example of outstanding design created by Aladdin architects. It has good proportions, interesting variety and detail. The plan at the right gives a very convenient kitchen-dining arrangement, which is becoming more popular every day. Write us for detail specifications on the Graystone #3. Other plans of the Graystone are shown on page 41.



PLAN NO. 3



THE BRISTOL

Shown here at the right is an additional floor plan for the Bristol. This plan arrangement gives access to the attic and provides additional space for bedrooms. We do not include any materials to finish off the attic but do provide the attic stair and subflooring for a space in center 36 feet by 12 feet. See other plans on page 56.



BRISTOL "C"

**BUILD YOUR
OWN HOME**



SCENIC WINDOWS

Because the term "Scenic" more properly describes their function than "Picture" windows, we have adopted the former term. A "Picture" window gives a mental picture of being on the outside of the home looking in. But a "Scenic" window reveals a view from the inside, looking out. A "Scenic window" brings the outdoors in as part of your home and makes the whole world, for as far as you can see, an attractive scene from your new home. The two pictures on this page illustrate the beauties made possible when your home is embellished with Aladdin Scenic windows. Also see Page 50.

SELECTING YOUR COLOR SCHEME

It is usual first, to select your favorite primary color,—red, yellow, or blue, or one of its many shades, and combine the general scheme with either adjacent or contrasting colors.

An established practice is to utilize your main room color in an amount of about 50%, your secondary color or tint to the extent of 30%, and the balance of the decoration 20%.

To illustrate we will take the three friendly, or adjacent colors, yellow 50%, yellow-green 30%, and green 20%. Your base color will be chosen for painted walls or wall paper 50%; carpet and upholstery, secondary color 30%; curtains, lamp shades, etc., the last or 20%. Save the brightest colors for your accessories.

Of course it is not meant to suggest that each or all of these colors shall necessarily be solid. The background of figured materials should influence the whole.

"LOVELY TO LOOK AT AND LOVELY TO LIVE IN"



FASHION IN COLOR

Aladdin's Catalog for 1954 illustrates the new and changing demand for sparkling color treatment for the outside walls and trim. Too long has been the tendency to apply an uninteresting, drab treatment—white without contrasting trim, or one of a variety of drab shades. The new fashion is the result of color artists applying their skill and knowledge to this subject. Warm, rich, glowing colors have been developed in many new tints and shades. These will be available to you in Aladdin's newest color card.

COLOR MAGIC

A famous specialist in the use of colors in the home has said:

"Of all the pleasures in life, color in the home is the simplest and easiest to enjoy."

And, we might add, the least expensive.

During the period of construction of your home you have time and opportunity to plan and choose this last and very important decision, selecting your color scheme which will be a part of your daily life for the coming years.

We do not suggest that you seek out such colors as may, at the moment, be stylish. Your choice of decoration should be highly personal; first to please you and your family, and last, to lend brightness and cheer.

A complete color chart includes one hundred and fifty-two named colors and tints. Each one of these is created from the primary colors—red, yellow and blue, by either mixing the base color with white, or by combining the base color with another base color. For instance, green is created by a combination of blue and yellow.



The Aladdin color card reproduces a wide range of the newest and most fascinating colors that will be available to you to choose from for your outside body color and trim. It will be sent to you on request. ALL INTERIOR PICTURES ILLUSTRATED IN THIS CATALOG WERE TAKEN IN ALADDIN HOUSES ERECTED RECENTLY.

CHARM IS THE
UNIVERSAL WORD
FOR COLOR

COLOR HARMONY

Here is a suggestion that will be unending in securing color harmony. Shop at a good wall paper store for samples of paper of your favorite colors. Fine wall papers are designed by talented artists who have the "Know-How" and training to combine colors harmoniously. You will accomplish a tastefully color-styled interior by simply repeating the colors of your wall paper pattern for floor covering, draperies, upholstery fabrics, accessories and other furnishings.



PEOPLES NATIONAL BANK
OF MICHIGAN
BAY CITY, MICHIGAN

January 2, 1954

To Prospective Aladdin Customers:

The Aladdin Company has been a valued customer of this bank and its predecessors, The National Bank of Bay City and Peoples General and Savings Bank, for over forty-eight years. The company's sound business principles, integrity and fair dealings have never, to our knowledge, been questioned by its business associates or its many thousands of customers.

It has earned the complete confidence of the public.

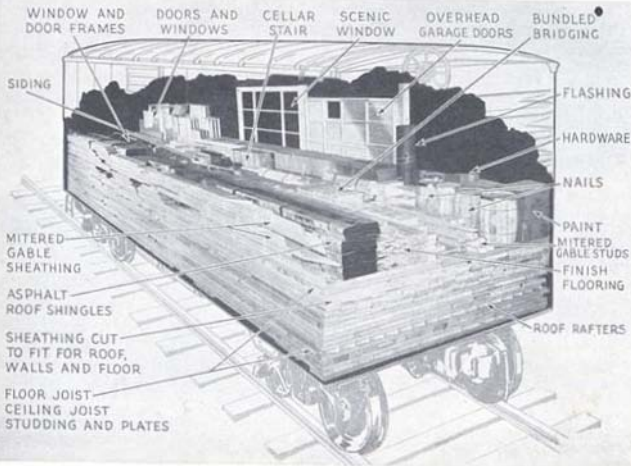
Very truly yours,

Edward J. Kesteven
Executive Vice
President & Cashier

The letter above fully explains our business reputation and ability to fulfill our obligations. We refer you to your own local bank as Duw and Roddick's for further reference as to our financial responsibility.

HERE'S HOW YOUR ALADDIN HOUSE IS SHIPPED

The "Phantom" railroad box car pictured below illustrates graphically, by its contents, the manner in which you will receive your Aladdin house. The greatest of care is used by our loading crews, following a detail plan, to insure against damage in shipping. A skilled employee stands at the car door to check off every item against our shipping list. The studding, rafters, joists and sheathing are loaded first at the bottom of the car, with the flooring, finish lumber and other parts of the house, as listed on the bill of material on Page 39, carefully dispersed and braced at the top. While the cubic contents of this loaded Coronado No. 1 occupy only 1920 cubic feet, when erected the house contains 13,392 cubic feet of staunchly built floors, walls, ceilings and roof. And remember that our unlimited guarantee of sufficient quantities and safe arrival of every item protects you completely.



ALADDIN READ-CUT GARAGES



STANDARD No. 5—12' x 22'
STANDARD No. 6—20' x 22'
STANDARD No. 7—16' x 22'



SOVEREIGN No. 5—12' x 22'
SOVEREIGN No. 6—20' x 22'
SOVEREIGN No. 7—16' x 22'



SUBURBAN No. 5—12' x 22'
SUBURBAN No. 6—20' x 22'
SUBURBAN No. 7—16' x 22'

GARAGES Our garages are manufactured in three sizes only—12' x 22' for one car, 20' x 22' for two cars, and then we have a combination storage and one-car garage 16' x 22', which is commonly known as the car and one-half garage. You have available space for work bench, garden tools, etc. of approximately 4' x 22'. You will find this space very useful in your garage. Garages are priced in double construction, that is, with 2 x 4" studding, wall sheathing, building paper and siding or shake shingles to match the exterior of your home. We furnish the complete materials except the concrete slab floor. In the 16' x 22' garage we provide an inswing casement window at the front of the storage portion with flower box, which adds to the attractiveness of the garage. Overhead garage doors are provided. Write for Detail Specifications for our garages. We do not sell garages separately.

BUILD IT YOURSELF



WE PAY THE FREIGHT

ALADDIN FOLDING STAIRWAY

Where no attic stairway is shown in the floor plan, in most cases it is possible to install a folding stairway to the attic, usually in the ceiling of the hall. The stairway can be lowered or raised with almost finger pressure. When closed, the space is covered with a neat panel. The frame opening in the ceiling is about 26" x 54". When installing this folding stairway you are spared the present cost of finishing off the second floor rooms but are in shape to expand at a later time at minimum cost. Write for prices and information on our stairway.



ADD EXTRA ROOMS IN YOUR ATTIC

ALADDIN BLUEPRINTS AND INSTRUCTION BOOK

To simplify the erection of your home we furnish a complete set of drawings listing and showing in position every piece of material entering into the construction of your home. Also, we provide a book of instructions explaining in detail every step of the erection, how to sort your materials on the ground after they are unloaded from the car. The drawings and book of instructions are mailed to you far enough in advance so you will have them to study and familiarize yourself with the details before your materials arrive.



The Bristol—Brilliantly Modern American—

Price Given
On Enclosed
Price List

WE PAY
THE
FREIGHT

The Bristol is embellished with two typically Colonial features, the front entrance and the bay window in the dining room. Fluted pilasters bordering each side of the front door are topped by a head casing designed with dentils. This beautifully proportioned ensemble is of true Colonial inspiration, and affords a genuine welcome to those who enter its portals. The Bristol has proven very popular and has received loud praises of its beauty, convenience and economy from those who have built it. Its interior arrangement includes very desirable features of the ultra modern American home. The Plan B arrangement provides 3 bedrooms of a commodious size that will take care of the needs of the average family. The 2 bedroom arrangement, which is the Bristol, Plan A, provides dining room accommodations. Both plans surely deserve a careful study to be fully appreciated. We will be glad to discuss with you further details of your individual wishes. Write us for detail specifications.

FOR ANOTHER PLAN ON THE
BRISTOL—SEE PAGE 51.





The Bellevue

DISTINCTIVELY ORIGINAL

Price Given
On Enclosed
Price List

WE PAY
THE
FREIGHT

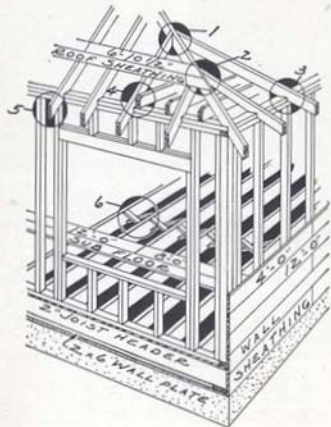
This plan is distinguished by a rare arrangement of the front elevation. The garage, fronting the street, is in perfect harmony with the whole, and meets the current demand for this type. The front entrance is embellished with fluted pilasters, the front gable discloses perpendicular siding and the expansive bay window, enclosed by a garden wall of stone (optional) lends especial charm to the whole. Arranged in Plan No. 1 will be found vestibule, well-proportioned living room, two bedrooms, combined kitchen and dining space, bath, cellar stairs and accessible garage with entrances from both the outside as well as the interior. Plan No. 2 includes these same features but with three bedrooms. While the above photo of the Bellevue shows the exterior finished in brick, we can provide either siding or shake shingles if you do not wish to build your home with a brick veneer exterior. Write us for prices on siding or shingles if brick veneer is not desired. Send for specifications.



PAY YOURSELF THOSE HIGH WAGES

Every hour you can put in on the construction of your Aladdin home means a saving to you of from \$2.00 to \$3.00 per hour on its cost. That means a **SAVING** of from \$15.00 to \$18.00 for every day you work on it! **** Depending on the size of the house, the carpenter work sums up to from three hundred hours to twelve hundred hours. **WITH MOST OF THE SKILLED LABOR ALREADY PERFORMED**, when you receive your Aladdin Readi-Cut, what an opportunity you have to bring down the cost of your new home to practically a pre-war level. Our drawings and instructions cover everything from the foundation up, so you can save any part, or even all labor costs.

SHOWING SAVINGS IN LABOR BY THE READI-CUT SYSTEM



The picture at the left shows how the lumber in your Aladdin house will be cut to fit in our mill and ready to nail in place when you receive it. Figure 1 shows jack rafters with the mitre and bevel at upper end. Figure 2 shows mitre on end of roof sheathing. Figure 3 shows "heel" cut on rafters. Figure 4 shows mitre cut on end of ceiling joists. Figure 5 shows mitre on end of rafters. Figure 6 shows mitre on joists bridging. Wall plates, joists header, floor joists, wall sheathing, wall and partition studding and sub-floor materials are also accurately cut to proper sizes and lengths, each piece also marked for length. An Aladdin Readi-Cut house is identical in **DESIGN, CONSTRUCTION AND MATERIALS** to the best architect planned and contractor built home. The Aladdin Company's forty-eight years of sound business principles, integrity and fair dealing is your safeguard.

LUMBER MUST BE DRY

No house is well built unless all lumber is dry. Dry lumber is best because: It is pre-shrunk—prevents shrinking later; superior in nail-holding qualities; more resistant to decay; stronger and stiffer. Aladdin gets "The Pick of the TREES."

All Aladdin lumber is thoroughly dry before being shipped to you. We guarantee complete satisfaction or your money back.

ALADDIN HOUSES ARE NOT "PREFABRICATED"

Bristol Under Construction

Below we show the Bristol under construction. We illustrate the first steps in framing the house, the studding for the outside walls and partitions having been nailed up. This picture shows the exact construction details of every Aladdin house.



Aladdin's 48 Years Service

The Aladdin Company initiated the Modular Principle of house design 48 years ago.

Initiated the Factory Pre-cut System 48 years ago.

Initiated the "Packaged" Sales Plan 48 years ago (one price for the complete house).

Initiated the Merchandising Plan of Direct Sales by the manufacturer to the home builder 48 years ago.

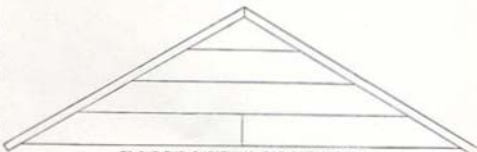
Initiated the Plan of Supplying only the very highest grades of lumber and all other building materials 48 years ago.

Initiated the Practice of Unconditional Guarantees of complete satisfaction to ALL Aladdin Home Builders 48 years ago.

Aladdin has practiced the Golden Rule in Business for 48 Years

HOW THE ALADDIN READI-CUT SYSTEM SAVES YOU MONEY BY GETTING 20 FT. OF LUMBER FROM A 16 FT. BOARD

An Aladdin Read-cut Home saves you from twenty to thirty percent in your labor bill because the carpenter does not have to spend his time working out the construction details, and cut all the lumber by hand. Our complete drawings give him construction details that have been proven the best over a period of forty-eight years.

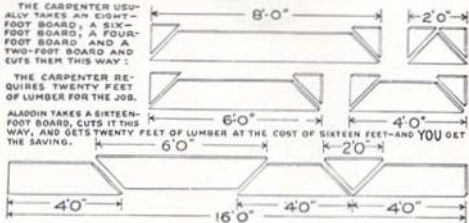


TO CUT THE SHEATHING FOR THIS GABLE:

THE CARPENTER USUALLY TAKES AN EIGHT-FOOT BOARD, A SIX-FOOT BOARD, A FOUR-FOOT BOARD AND A TWO-FOOT BOARD AND CUTS THEM THIS WAY:

THE CARPENTER REQUIRES TWENTY FEET OF LUMBER FOR THE JOB.

ALADDIN TAKES A SIXTEEN-FOOT BOARD, CUTS IT THIS WAY, AND GETS TWENTY FEET OF LUMBER AT THE COST OF SIXTEEN FEET—AND YOU GET THE SAVING.



REMEMBER THE LUMBER THAT'S WASTED COSTS JUST AS MUCH AS THE LUMBER THAT'S USED. ALADDIN SAVES 18% LUMBER WASTE.

Efficient Planning Saves Your Money

Waste can and does influence the cost of everything you buy. This is especially true of home building.

Waste consumes your dollars and gives nothing in return. Aladdin proves to you that the Read-cut System will save about \$18 out of each \$100 on your lumber costs.

Aladdin proves to you that the Read-cut System will save you about \$30 out of each \$100 labor cost. A study of the above drawing will give you a very clear understanding of the amazing economies of the Aladdin Read-cut System and what it means to you in dollar saving.

ALADDIN System Gives Control Over Your Costs

Why shouldn't you save these profits, like thousands of other home-builders have been doing through The Aladdin Company for the past forty-eight years?

You KNOW in advance what the materials for your house will cost more materials than will be used and that you will save the price of all "short ends" that are wasted by the old system.

You KNOW you will receive high grade lumber, millwork, hardware—Aladdin CERTIFIED materials. You KNOW everything will be on hand when you want it—all in one shipment and all guaranteed by Aladdin. And you KNOW in advance what your house will look like and what it will be in every way.

KNOWING gives you control—mastery of your money, of materials, of labor and of RESULTS.

Quick Shipment

We can ship any regular home in this catalog within ten days to two weeks after we receive your order. The average time required for delivery after leaving the factory is from three to five days. We prefer to be given a little more time if convenient to you. All homes are shipped complete at one time in a sealed box car from our mill. Before you start your foundation send a deposit of \$5.00 for a plan and instructions for laying out your foundation.

ALADDIN Service

You receive a scientifically designed home; a scientifically manufactured home; the benefit of buying power, thousands of times greater than your own. You receive the safeguards of our experience. You are guarded against costly extras. You have our help in keeping costs down. You save many days' time. You save costly waste. You receive everything complete for your home in one shipment. You know exactly what your house will look like when completed. You save all architectural fees. You are assured prompt shipment and quick erection. You receive a bona-fide guarantee of complete satisfaction.

WASTE! WASTE!



The above actual photograph shows the extravagant waste of good lumber. The 2x6 rafters projecting over the walls will have to be sawed off to have a one foot projection for eaves. The builder will have wasted and thrown in the scrap pile 160 board feet of good lumber, for the rafters alone, worth at retail at least \$20.00.

**ALADDIN READI-CUT
SYSTEM SAVES
18% WASTE**



The Inglewood—Happily Proportioned and Gay — Price Given On Enclosed Price List

Here is a home that will gladden the hearts of those who are looking for a modest, compact home. Its exterior features are thoroughly up-to-date, presenting an extended and large Scenic window with modern front entrance and door. The two floor plans below speak eloquently for themselves. Should you plan to do considerable work on the erection you will have a sound and lasting investment at a great saving in cost. All materials going into the Inglewood are of the same fine quality—the very best—that is furnished for our largest houses. Write us about your choice of plan and receive complete specifications.



ROOM SIZES

The sizes shown on catalog floor plans are net dimensions between finished, plastered walls. These dimensions give you the accurate sizes to plan for proper placement of furniture and other equipment for each room.

SPECIFICATIONS

A study of Aladdin specifications will reward you with the knowledge that nowhere can be found quality to exceed that which is a part of Aladdin houses. Finer materials cannot be had for we have used the greatest care to seek out and use the very best. Write for detail specifications.

SOLD BY THE GOLDEN RULE—SATISFACTION OR YOUR MONEY BACK



The Acacia — Pretty as Its Flowered Namesake —

Price Given
On Enclosed
Price List

WE PAY
THE
FREIGHT



PLAN No. 1

The high brilliance of the Acacia flower inspired the naming of this architectural gem. Its beautifully proportioned frame is simple for the sake of economy, yet it is gayly touched with interesting detail—exceptionally large Scenic window, over-



PLAN No. 2

hanging roof at entrance, newly designed hood over kitchen entrance, and deep shadow lines formed by the heavy double "Shake" Cedar Shingles. Detail specifications will be sent you on request, which will give you all the interesting facts about the Acacia. Write us.

QUALITY LUMBER

The wood is certainly everything you claim it is, and the carpenters, both quite skilled, were amazed and intrigued that they were to put up a house where everything was already cut and assembled. Many people in this area are showing a great deal of interest in this Aladdin Home. F.G.B. Kingsford, Michigan

PERFECT FITTING

Everything was shipshape, all material was marked and of fine quality and came on time. Am very much pleased with our home and of the service we received from your company. Thank you. You can be sure you've made another satisfied customer. I would recommend Aladdin Homes to anyone. W.H.Y. Atwater, Ohio

ALADDIN HOUSES are NOT PREFABRICATED

EXTERIOR DOORS

Style No. 8 door is provided at the rear of each of our Aladdin homes. In our specifications we list the front door, giving the style number of door provided. If you wish a different style door than is specified in the specifications for your home, write us.



No. 8



No. 9



No. 10



No. 16



No. 17



2 Panel

INTERIOR DOORS

Shown at the left is our beautiful two-panel door which we provide for all interior openings where doors are shown. If you wish flush doors as shown at the right, we can provide them at an extra cost. Write us for prices.



Flush

PLANS CAN BE REVERSED

Any Aladdin home can be furnished to be erected reversed. In a reversed home all rooms shown on the right-hand side in catalog floor plan arrangement will be on the left-hand side. Be sure to tell us if you plan to build your home reversed.

MASONRY and FIREPLACES

Chimneys and fireplaces are shown on our plans to suggest a practical location. We do not cut the openings in our homes for them. Our foundation plans show exactly how to proceed with the construction of your foundation. Be sure to get the foundation plan before you build your foundation. We do not furnish or quote on masonry materials, plaster, plaster bases, such as rock lath, or wall board.

It's Easy to Follow

ALADDIN Blueprints



BUILD YOUR OWN ALADDIN HOME

Above we have shown in greatly reduced size, a few figures taken from a set of Aladdin Ready-cut House Plans. They show the size, length and position of every piece of material entering into the construction of the home. All materials including mitered materials are marked and cut to exact length, and all you have to do is nail the materials in place.

INDEX OF SUBJECTS DESCRIBED IN THIS ALADDIN CATALOG

Ready-Cut System: Pages 2, 3, 54.

Terms: See Price List.

Guaranty: See Price List.

Arches: Page 50.

Breezeway Designs: Page 47.

Cellar Windows: Page 50

Chimneys: Page 62

Foundation: Page 62.

Foundation Plans: Send \$5.00. Page 50.

Freight: See order blank on Price list.

Garages: Page 55.

Heating, Lighting, Plumbing: Not furnished
—Secure Locally

Kitchen Cabinets: Page 49.

Masonry: See Price list & Page 62.

Materials Used: Pages 2, 3, 54, 58, 59,
and 62.

Scenic Windows: Page 50.

Quick Shipments: Page 59

Reverse Plans: Page 62.

Ranch Houses: Pages 4, 5, 6, 8, 9, 11, 12,

13, 14, 16, 21, 27, 31, 33, 34, 36, 37, 40,
41, 44, 45.

Reducing Labor costs: Pages 58, 59.

Plans with utility rooms: Pages 11, 13,
34, 41, 61.

3 Bedroom homes: Pages 4, 5, 7, 8, 9, 12,
13, 14, 15, 17, 20, 21, 22, 23, 26, 27, 28,
29, 30, 31, 32, 33, 34, 35, 36, 37, 40, 41,
44, 45, 48, 51, 56, 57.

4 Bedroom homes: Pages 6, 7, 10, 14, 17,
and 23.

ALADDIN BUILDING ESTIMATES

EXCAVATION—Below we give the cubic yards of excavation 3' deep. One-third of that amount will be the number of cubic yards in 1' of excavation for your foundation. Multiply the number of cubic yards for 1' of excavation, by the depth you intend excavating. You will then have the number of cubic yards to remove for your foundation. Our figures are based on making the excavation 1' larger each way than the size of the foundation and does not include attached garages.

FOOTINGS—We give under "Cubic Yards of Poured Concrete" total number of cubic yards of concrete required for all main footings, column footings, porch footings, terrace floors, chimney footings and concrete steps when shown, also basement floors and floors for all attached garages.

FOUNDATIONS—Under "16' Blocks for Foundation" we give the number of concrete blocks required to construct the foundation according to our foundation plan. This includes porches and terraces where shown; also wall for garages if attached to house. All plans having a basement stairs are figured for a foundation wall 10 blocks high. All plans without basement stairs

are figured for a main foundation wall 5 blocks high. For foundation plans see page 50.

PLASTERING—Under this heading we give you the square yards of plastering surface, or if you use wall-board, the square yards of surface to be covered. The yarding includes all walls and ceiling surface. It does not include walls for any attached garages. All openings are included in figures such as doors and windows to allow for cutting and waste of your plaster base, such as rocklath, or wallboard.

CHIMNEYS—Chimneys and fireplaces are sometimes shown on our plans to suggest a practical location. Since we do not cut the openings in our homes for them, you can change the location or omit them entirely if preferred. The amount of material required for chimneys is as follows:

One 8" x 8" flue chimney, 20 bricks to each foot of height.
Two 8" x 8" flue chimneys, 30 bricks to each foot of height.
One 8" x 12" flue chimney, 35 bricks to each foot of height.
Two 8" x 12" flue chimneys, 40 bricks to each foot of height.
For mortar allow 1/2 bag cement and 1/2 cu. yd. sand for each 1000 bricks.

HOUSE	16' Blocks for Foundation	Cu. Yds. Poured Concrete	Cu. Yds. Excavation 3' Deep	Sq. Yds. Plaster or Wallboard Surface
Azalea #1	902	15	100	553
Azalea #2	510	5	35	374
Alamo #1	1150	19	120	483
Alamo #2	1080	19	120	472
Alamo #3	968	15	102	402
Alvarado #1	526	8	57	272
Alvarado #2	952	17	100	356
Ambassador #1	1150	24	155	638
Ambassador #3	1030	21	126	437
Astoria #1	986	19	109	399
Astoria #2	1233	22	129	477
Bellevue #1	1350	25	140	460
Bellevue #2	1440	29	160	553
Brentwood #1BV	1100	22	140	510
Brentwood #2BV	1152	20	149	485
Brentwood #1BV	1050	17	122	452
Brentwood #3BV	1338	29	178	636
Bristol "A"	1034	18	124	491
Bristol "B"	1036	18	124	501
Bristol "C"	1048	19	132	476
Cambridge #1	1414	28	128	451
Cambridge #2	1414	29	138	494
Cambridge #3	1481	29	138	509
Coronado #1	1156	21	121	473
Coronado #2	866	14	90	370
Coronado #3	958	13	137	462
Coronet #1	1116	22	150	556
Coronet #2	1034	19	128	491
El Rancho #1	1276	25	177	632
El Rancho #2	1085	19	137	473
Embassy #1	1654	36	190	603
Embassy #2	1512	33	164	522
Evanson #1	1118	21	139	480
Evanson #2	1012	18	126	437
Flamingo #1	1898	40	190	632
Flamingo #2	1312	28	127	490
Friendship #1	1276	29	137	495
Friendship #3	1256	25	167	630
Glencove #2	1098	24	123	488
Glencove #3	1090	19	124	447
Graystone #1	596	8	52	330
Graystone #2	990	18	107	427
Graystone #3	1166	22	142	536
Groveland #1	1256	25	177	622
Groveland #2	1032	19	134	457
Highwood #1	816	15	93	354
Highwood #2	934	17	112	391
Hollywood #1	1694	36	206	753
Hollywood #2	1466	30	158	508
Houston	1436	31	154	511

HOUSE	16' Blocks for Foundation	Cu. Yds. Poured Concrete	Cu. Yds. Excavation 3' Deep	Sq. Yds. Plaster or Wallboard Surface
Ingleswood #2	427	5	29	300
Ingleswood #3	924	16	107	425
Jasmine #1	902	18	94	336
Jasmine #2	902	18	94	364
Jasmine #3	338	5	25	223
Laurel #1	420	4	82	270
Laurel #2	896	15	99	339
Lexington #1	1244	26	134	486
Lexington #2	1244	26	134	497
Manhasset #1	1132	22	135	502
Manhasset #2	1092	21	135	524
Monterey #1	1076	21	130	665
Monterey #2	1164	21	134	533
Newport #1	1050	20	122	450
Newport #6	1076	20	130	470
Palomar #1	996	18	118	431
Palomar #2	988	14	92	318
Palomar #3	1170	19	160	595
Parkway #1	1116	21	118	429
Parkway #4	1116	21	118	434
Parkway #5	1176	23	133	469
Pasadena #1	1062	19	130	491
Pasadena #2	973	17	113	489
Plaza #2	1296	29	146	560
Plaza #3	1238	23	124	476
Redwood #1	384	7	31	372
Redwood #2	872	17	96	372
Redwood #3	931	17	110	441
Rio Grande #1	1440	28	182	666
Rio Grande #2	1231	24	142	478
Royston #1	1032	19	129	463
Royston #2	1066	20	132	486
San Diego #1	1096	21	136	490
San Diego #2	1216	23	155	530
San Diego #3	1167	21	140	481
Santa Barbara #1	1181	30	170	534
Santa Barbara #2	1332	27	137	474
Santa Fe #1	1162	22	156	580
Santa Fe #3	1133	20	131	470
Sunshine "H"	872	14	97	398
Sunshine "K"	902	15	102	420
Sylvan #1	1019	18	120	453
Sylvan #2	570	9	40	414
Sylvan #3	882	15	93	355
Ventura #1	1246	26	165	556
Ventura #2	1032	19	125	457
Vinewood #1	1062	18	123	424
Vinewood #2	1062	18	120	462
Yorktown #1	868	16	98	377
Yorktown #2	958	18	118	436

THE ALADDIN COMPANY

FOUNDED 1906

Catalog No. 59

BY—W. J. and O. E. SOVEREIGN

1954

HOME OFFICE and MILLS, BAY CITY, MICHIGAN



The Jasmine — Home of Comfort —

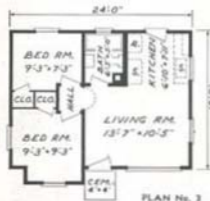
Price Given
On Enclosed
Price List

WE PAY THE
FREIGHT



BUILD
IT
YOURSELF

BUILD YOUR
OWN HOME



Building a home will probably be the largest personal investment of your lifetime. To have at your command an organization experienced in planning, creating and advising you when you build—an organization with a lifetime—over forty-eight years—spent in this work—is a priceless advantage to you. The modest home on this page has had wide acceptance by home builders. You will be proud of its exterior beauty. It can be placed with pride and confidence in any surroundings. A careful study of its interior arrangements reveals the last word in comfort, convenience and efficiency. Ample wall space and cross ventilation have been accomplished in every room. Note that it includes four closets. Your choice of three plans is shown above.

SOLD BY THE GOLDEN RULE FOR FORTY-EIGHT YEARS

INDEX

Acacia 61	Cambridge 9	Glen Cove 23	Jasmine 64	Parkway 48	Santa Barbara 44
Alamo 32	Coronado 34	Graystone 41	Laurel 24	Pasadena 20	Santa Fe 27
Alvarado 18	Coronet 29	Graveland 6	Leasington 16	Plaza 27	Sunshine 35
Ambassador 33	El Rancho 40	Highwood 19	Manhattan 15	Redwood 45	Sylvan 22
Astoria 10	Embassy 5	Hollywood 12	Monterey 7	Rio Grande 36	Ventura 8
Bellaire 17	Evanton 13	Houston 11	Newport 30	Royton 26	Vinewood 31
Bentwood 17	Flamingo 21	Inglewood 60	Palomar 33	San Diego 4	Yorktown 25
Bristol 56	Friendship 14				