

ALADDIN


READI-CUT
HOUSES



Sold By The
**GOLDEN
RULE**

TRADE MARK





Catalog No 32

ALADDIN HOMES

"Built in a Day"

THE ALADDIN COMPANY

Home Offices, Bay City, Michigan

W. J. Sovereign, President
O. E. Sovereign, Secretary, Treasurer, General Manager

Northern Division Offices and Mills
Bay City, Michigan

South Central Division Offices and Mills
Hattiesburg, Mississippi

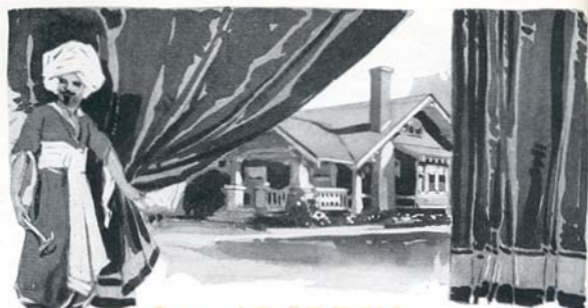
South Eastern Division Offices and Mills
Wilmington, North Carolina

Western Division, Offices and Mills
Portland, Oregon

Canadian Division, Offices
Toronto, Ontario
Mills, Toronto, Ottawa and Vancouver

IMPORTANT: Read the following introductory pages carefully.

Cable Address:
"Aladdin," Western Union Code.



The ALADDIN HOUSE AT A GLANCE

Center sill foundation timber cut to fit. Joists, studding, rafters, and ceiling joists all accurately cut to fit. Sheathing lumber cut to fit. Sub-floors cut to fit. Joist bridging cut to fit. Building paper for all dwellings for side walls and floor linings. All bevel siding, every single piece guaranteed to be cut and to fit accurately. Shingles or siding for the side walls, whichever preferred, will be furnished for any house at no additional cost. Outside finishing lumber, all cut to fit. Flooring, cut to fit. Roof sheathing, cut to fit. Porch timbers, joists, flooring, columns, railing and posts, roof sheathing, all and every piece cut to fit except porch rail, uncut. Extra Star-A-Star Cedar Shingles or prepared roofing. Outside steps of all dwellings cut and shaped to fit. All doors mortised with frame and trim inside and out. Windows and frame, sash, and glass, and trim inside and out. Moulded base board for rooms, not cut to fit. Weather moulding for trimming all outside doors and windows, cut to fit. Crown mould, cove mould and quarter round mould, etc. Stairways, treads, risers, stringers, newel posts, balusters, moulding, etc., for all two-story houses cut to fit. All hardware. Mortise locks, knobs, and hinges, tin flashing, hip shingles, galvanized ridge roll, window hardware, etc. Nails of proper size for entire house. Paint for two coats outside body and trim (any colors), putty, oils, stains, and varnishes. Lath and plaster and grounds for lining entire house. Complete instructions and illustrations for doing all the work. (Aladdin houses are always shipped under the freight classification of lumber with hardware, etc., listed under their respective classifications. See page 8.) The floor plan of any house in this catalog will be reversed without extra charge.

TERMS

TWENTY-FIVE per cent cash with order, balance C. O. D. This is not meant as a reflection on your financial standing, but is an invariable rule. A discount of 5% is allowed from list prices where full amount is sent with order. For your convenience, we have shown the list price and the net price with each house on price list on inside front cover catalog.

An illustration: List price of house, \$1,000, 25% cash with order—\$250, balance \$750 C. O. D., or 5% discount for sending full amount—5%, \$50 from \$1,000—\$850, if all sent with order. You save \$50 by sending full amount with order on a \$1,000 house, other houses same in proportion. Cash discount is often large enough to pay freight charge.

THE ALADDIN COMPANY General Offices, Bay City, Michigan

REFERENCES: Any Bank in the United States, Bradstreet's or Dun's Commercial Agencies, First National Bank of Chicago, and the First and Old Detroit National Bank of Detroit. The First National Bank, Portland. The First National Bank, Hattiesburg, any city official or other citizen of Bay City, and our customers.

Copyright, 1919, by The Aladdin Company, Bay City, Michigan.

Note.—This Copyright protects each and every part of this book—type matter, illustrations, and floor plans. Use by any one without specific permission is expressly forbidden. Anyone attempting to build or copy Aladdin houses with material not furnished by this company will be swiftly prosecuted to the full extent of the law.



The ALADDIN PLAN

This is the Fifteenth Year of Aladdin Success.

ALADDIN Read-Cut Houses—The Aladdin System of Construction—may be new to you, but the system was planned and put in operation a decade and a half ago. Its merits, and wonderful simplicity, were immediately recognized by the American public. The result is that practically every year the history of the business shows a doubling and trebling in the volume and number of houses sold. You know that this wonderful growth would be impossible for any manufacturing institution, or any business house, unless customers became friends—unless real service was rendered—honest value, square business methods, and integrity prevailed.

The United States Government has used The Aladdin Company's standard read-cut specifications in advertising for bids for the construction of houses on government projects. This is not only official endorsement of the Read-Cut system of construction, but recognition of the merit of The Aladdin Company's specifications.

Integrity of the Aladdin Policy

Integrity means *moral soundness*; it means *honesty*; it means *freedom from corrupting influence or practice*; it means *strictness in the fulfilment of contracts, uprightness, square dealing*. The Aladdin policy of doing business endeavors to live up to the strictest meaning of *Integrity*. The customer must be well served—must be satisfied—must be pleased—*must be a friend*. The *Golden Rule* must govern every transaction. You who read this are entitled to know the truth of the above statement. Well, then, demand of us that proof in whatever way you wish. Shall we give you bankers, congressmen, postmasters, City, State or National Government officials, or, better than all shall we refer you to *customers who have tested our integrity*, customers in your own neighborhood? The proof is yours for the asking.

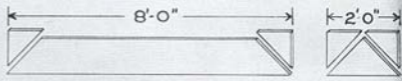
The Aladdin System of Construction is Built on This Principle:

Modern power-driven machines can do BETTER work at a lower cost than hand labor. Then every bit of work that CAN be done by machine SHOULD be so done. The steel worker with a little hack-saw trying to cut and fit the steel girders of the modern skyscraper should be no more out of place than the modern carpenter cutting sills, joists, and rafters. The skyscraper framework is cut to fit by machines in the steel mills, marked and numbered ready for erection. The lumber in the Aladdin house is cut to fit by machines in the Aladdin mills, marked and numbered ready for erection. The steel system is twenty-six years old—the Aladdin system fifteen years old.



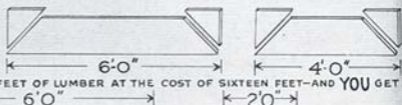
TO CUT THE SHEATHING FOR THIS GABLE:

THE CARPENTER USUALLY TAKES AN EIGHT-FOOT BOARD, A SIX-FOOT BOARD, A FOUR-FOOT BOARD AND A TWO-FOOT BOARD AND CUTS THEM THIS WAY:



THE CARPENTER REQUIRES TWENTY FEET OF LUMBER FOR THE JOB.

ALADDIN TAKES A SIXTEEN-FOOT BOARD, CUTS IT THIS WAY, AND GETS TWENTY FEET OF LUMBER AT THE COST OF SIXTEEN FEET—AND YOU GET THE SAVING.



ALADDIN TAKES A SIXTEEN-FOOT BOARD, CUTS IT THIS WAY, AND GETS TWENTY FEET OF LUMBER AT THE COST OF SIXTEEN FEET—AND YOU GET THE SAVING.



TWENTY FEET OF LUMBER FROM A SIXTEEN FOOT BOARD - *How it's done*

THE wonderful money-saving results of the Aladdin Readi-Cut System will be understood after reading this page. Nowhere in the history of manufacturing or building since history began can be found an example equal to that which is a part of every day's work in the Aladdin designing rooms and in the Aladdin mills.

Think of taking a six-inch board sixteen feet long and getting twenty feet of six-inch board out of it!

Think of applying this *system of saving* throughout all the lumber used in building your home!

Think of your own good money it *saves!*

To eliminate waste by scientific planning, designing, and cutting of lumber is to save your money from the waste pile.

W. J. Sovereign, president of The Aladdin Company, conceived this tremendous thought, originated, perfected, and established the system.

The principle has been so thoroughly established through the success of The Aladdin Company that it is now accepted and approved by lumbermen, contractors, engineers and scientists.





WASTE—and what it means to you

"Only Thirty-five per cent of the original tree emerges in the form of a building."—SATURDAY EVENING POST.

SPECIAL investigation of waste in the construction of dwellings resulted in the following statement by a writer in the *Retail Lumberman*:

"A safe estimate of good lumber wasted in course of construction is 25%"

These two bare statements are quoted from such unquestionable sources to give special weight to our very conservative statement:

You will pay for 18% waste when you build the old way.

Eighteen per cent of your money will pay for material you don't get—eighteen dollars out of every hundred spent in your home—wasted.

When this statement was first made by us it was ridiculed by the lumbermen. The passing years have wrought changes in their ideas until now, when pinned down, they will admit that it is conservative.

We have reduced the item of waste to approximately 2%.

Machinery of the Most Modern types are used to manufacture Aladdin Homes. This machine houses and fits a staircase in less than five minutes.



"Big Ben": The most wonderful woodworking machine ever built. It does the work of 100 men every day.

The architect, in designing a house seldom considers the subject of cutting material to waste. He lays out the dimensions of the house, places windows, doors, etc., without any thought of how the material will cut. The contractor orders so many thousand feet of siding, of flooring, of 2 x 4, of 2 x 6, etc., without any thought as to the utilization of mill-run lengths. You, of course, know that sawmills cut logs in certain lengths, 10 feet, 12 feet, 14 feet and 16 feet, and it comes through the planing mill in those same lengths. It also comes to the contractor in the same lengths. When the carpenter cuts the siding to fit between two windows, the windows may be 10 feet 1 inch apart. He has to take 14 pieces of siding each 12 feet long and cut each one of them 10 feet 1 inch, wasting 1 foot 11 inches, or about 18% of good lumber absolutely wasted. The principle is the same throughout the entire house.

This waste is eliminated by the Aladdin designers and the Aladdin system.

Our buyers go actually into the woods, confer with the owners and cutters of the timber and buy the right lengths that will come out of the woods, through the sawmills and into our own mills in the right lengths. We don't take raw material in lengths and sizes as it chances to come, but as *it should come to conform to our standards*. In many instances the cross-cut saw in the hands of the woodsman is actually directed by our needs so that no other saw is touched to the lumber at any time.

When the architect overlooks something or makes a mistake, you pay the bill; when the contractor overlooks something or makes a mistake, you pay for that, too; and when the carpenter uses poor judgment, overlooks something or makes a mistake, you are the one to stand the cost of his mistake. It's always your money—not the other's



From the Pyramids to the Woolworth Bldg.

TO him who says the Readi-Cut System is not possible or practicable, point to the Pyramids of Egypt, refer to Solomon's Temple as described in the Bible, or inspect Washington Monument, or the 57-story Woolworth Building in New York City. You will find that each was prepared, erected and completed by the Readi-Cut System. But it remained for the Aladdin Company to first apply the system to *your* benefit in the building of a home. And thousands of American families scattered over this broad land will testify to its economy and practical success.

The pyramids aren't portable, the Woolworth Building is not portable, *nor are Aladdin houses portable.*

If you attempt to tear apart, or dissect an Aladdin house, the most expert contractor could not tell it from any first class frame dwelling because *there is no difference.*

At the bottom of this page is a striking illustration of the Readi-Cut System of construction successfully used for twenty-five years in steel-building construction. Note the "studding" for the

two side walls, all in position with the "joist hanger" placed. These studs are about thirty feet high. In the foreground are shown some of the rafters with the marks and numbers indicating their respective positions—"6201-16-Col-22." There is no fitting or cutting on the ground. The sawing, measuring, and fitting were done in the steel mills in Pittsburgh. How can they do this work? Why, the structural engineers know how. It's their particular business. It's their lifework. So it is with Aladdin Readi-Cut houses. The same principles govern each job. *It's the same system.*

*Readi-Cut System
of Construction*



The Lumber We Use

EVERY piece of framing and sheathing lumber in every Aladdin house has been carefully selected from the highest grade. It is carefully inspected by experienced men, and if not up to a high standard is not used. This is an extremely important point and you should consider it carefully. Our facilities for buying high grades are unsurpassed by any manufacturer of lumber in the country. This means much to the purchaser—to know the quality of all materials used, to know that the lumber and timber are the best; that it is well seasoned, sound, and of first quality throughout.

All the interior finish, doors, etc., are put through three separate sanding machines, making a beautiful finish.

Scores have written, "It would have been impossible to obtain locally, finish at any price to equal that furnished in my Aladdin." [Such names and addresses gladly furnished on request.]

What You Get When You Buy an Aladdin House

Material that is unsurpassed by any other concern in the country, and it is not only perfectly cut to fit, but cut with a view to saving all waste, which means a direct saving to you. But the saving does not stop there. We mortise all doors to receive the lock sets, all interior finish sanded, and flooring steel scraped.

Bear in mind that when you buy an Aladdin house that the foundation sill, floor joists, the sub flooring, the regular tongued and grooved flooring, the studding, the wall sheathing, the siding, the window and door frames, the outside finish, the rafters, the roof sheathing, the steps, the stairs, all porch framing, are *ready-cut*, ready to nail into place. Is it any wonder that we can save you such a big percentage of your labor cost? And then again, the enormous quantities in which we buy our building paper, lock sets, double acting door hinges, window weights, nails, paints, varnishes, oils, stains, hip shingles, tin flashing, etc., sets them down at your door for less than a hardware dealer can buy them from the jobber.

Direct from the Forest to the Home

Stop and think what that means—"direct from the forest to you." It means that you can buy your house direct from the mill at the edge of the forest—right where the timber grows. Aladdin customers are served direct from the four greatest timber producing sections of the country.

From the great forests of Oregon and Washington, from the well known timber lands of Michigan and the North, from the timber region of North Carolina, and from the vast timber resources of Mississippi and the South, Aladdin Homes are sold and shipped direct to you. This means

that your house costs you no more than if you could go direct to a mill at the edge of these forests and buy the timber and lumber. It means that you are doing that very thing—buying it from the mill at the edge of the forest.



Loading Yard of the ALADDIN Mill Railroad that Transports Lumber from the Yards to the Mill.

Aladdin's Famous "Dollar-A-Knot" Guaranty

A NEW standard of lumber quality has been given to the world by Aladdin's famous "Dollar-A-Knot" Guaranty.

The "Good-Enough" lumber grades, the "Anything-will-do" grades and the multitudes of evasive substitutions for Clear Knotless lumber have been shown up.

You cannot be expected to fathom the intricacies of lumber associations' manual of grading rules; how many circles, hearts, rings and barks make a good log, nor how many knots, spots, pitch pockets or worm holes there will be to a board.

There is none of these defects in your dollar, and there should be none in what you trade your dollar for.

Knotless Means Just What It Says

"A-Dollar-A-Knot!" Could any guaranty be plainer, or more forceful, or more effective? You know a knot when you see it, and you know it makes a board less valuable. And when we guarantee Aladdin lumber to be knotless or guarantee "A-Dollar-A-Knot" for our red cedar siding, you *know* that your lumber is going to be the very *highest* grade taken from the forest.

"Hunting for Pieces"—Contractor

Of course, the Aladdin Read-Cut System receives adverse criticism from some contractors, lumber dealers, and others. This criticism comes chiefly from those who have had no experience with, or knowledge of, Aladdin houses. Self-interest, here prompted by loss of profit, begets the antagonism.

One of the most amusing remarks made is that the builder of an Aladdin house will lose as much time hunting out his material and finding the right piece as he will save by the Read-Cut System. Of course this remark on the face of it is an admission that time is saved by the Aladdin System. However, any thought about time lost in hunting for pieces is immediately dispelled when you see the simple system of laying out materials that accompanies the instructions for every house.

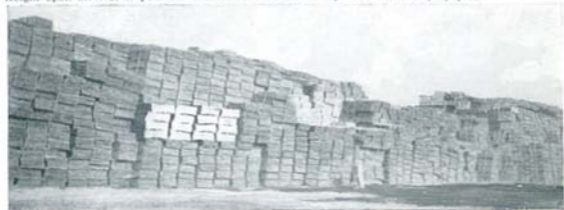
About Freight

One of the big advantages in buying an Aladdin house is the big amount you save on the item of freight alone. Your local dealer very rarely buys his lumber from the forest. He gets it shipped to him from his wholesaler at some near-by distributing point. The wholesaler usually gets it from some other middleman, who gets it from the sawmill. Every time the lumber is moved in its zigzag course through the middlemen, the freight charges pile up and your local dealer must add them all into the price you pay. When your Aladdin house reaches you the freight is the very lowest that is possible to move the goods from the nearest timber region to you direct. We use great care in quoting the freight and great care in routing it the most direct way. It costs no more to pay the freight upon arrival of your car than to send us the money with which to prepay it.

**I'll Pay \$100
For Every Knot**

any customer can find in our Red Cedar Siding. I stand ready to prove to you in this way that the lumber in Aladdin Read-Cut Houses is higher in grade throughout than is regularly carried by any seller of lumber in America. Further, we guarantee that you will receive Clear and Knotless Siding, Clear and Knotless Flooring, Clear and Knotless Interior Finish, for every Aladdin Dwelling House.

O. E. SOVEREIGN,
Gen. Mgr.,
The Aladdin Co.



Aladdin Houses Sold by the Golden Rule



TEN years of square dealing with our customers earned for us the expression, "I know that you do business very much on the *Golden Rule* basis."

This came in the mail voluntarily from a customer who had tested our business principles over a period of several years, and who has reason to know whereof he speaks. This principle has been governing the work of this organization constantly, and it is surely gratifying to have it come to us in this way.

We have, therefore, adopted the expression and know that we have a real right to its use—as you will know when you join the big Aladdin family.

Aladdin Lath and Plaster

Aladdin plaster is the highest grade manufactured and never fails to give the best results; a hard, smooth and lasting wall, is quick drying and impervious to moisture.

It is an improved wood fibre patent plaster. This does away with the work of preparing plaster through the old fashioned method. It not only shortens the labor but when the wall is finished it is a great deal more durable and less liable to pit. It also effects another saving, as the time required to set and dry out is much shorter, so that the interior finish can be put on without the usual delay.

For quick work or for use in cold weather it is preferable to any other plaster, as it will set and harden much more rapidly.

Painting

With every Aladdin house, paint of any color for two coats outside is furnished and oils, stains and varnishes or paints for inside. You will be sent, on request, our large color card of many beautiful colors. You may select as many different colors as you wish to choose for body, trimmings, porch floor, porch ceiling, window sash, etc., and you may have either paint, oil and varnish, stain and varnish, or stain and wax, for the interior finish. Where houses are furnished with shingles for the side walls, shingle stain is furnished instead of paint.

Masonry

Of course, all excavation and masonry work must be done on the ground. No money would be saved by including stone or brick or concrete, for every section of the country produces this material and prices vary but little. We furnish you with the foundation plan and will give you figures on the amount of material required for whatever kind of foundation material you decide to use—concrete, stone or brick. Fireplaces or chimneys may be built inside or outside and placed wherever desired or may be omitted. The opening for the chimney is not cut, so that the chimney may be omitted or its location changed from wherever it may be shown in our photographs.



The ALADDIN BOARD OF SEVEN

BEFORE this Board of Seven comes every Aladdin house for the acid test of perfection. No detail escapes the keen and searching analysis of these experts. The designer must prove his plans to the complete satisfaction of, First, the Master Designer, for accuracy; Second, the Master Builders, for practicability, strength, and structural harmony; Third, Factory Experts, for elimination of waste, standardization of lengths, and economy of costs. Unless the cost of these high-priced men's time could be spread over a hundred or more houses of

each design, the cost would be prohibitive. But when they spend two or more hours' valuable time on the design, drawings, and cutting sheets of an Aladdin house, the cost is not all charged to that *one house*, but to *several hundred houses* of that *same design* sold during the year.

No other organization—but the Aladdin organization—can afford a group of high-calibered men such as this Board of Seven, because no other organization in the world produces and sells the vast number of houses and buildings produced by The Aladdin Company.

No other lumber manufacturer ever dared back his lumber with a dollar-a-knot guarantee.

This organization was called upon by the United States Government to co-operate with it in the production of an Ideal Cottage. This Cottage was erected for the Government at the Panama-Pacific International Exposition at San Francisco and was awarded the highest honor and granted a medal.

Could higher recognition be received by any institution than this which was accorded to the Aladdin organization, and to Aladdin houses?

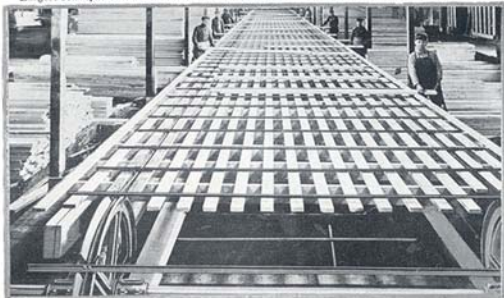
Aladdin's Board of Seven is waiting to help you.

The United States Government

has given to The Aladdin Company the right to apply to its product (Aladdin Houses) "*Sold by the Golden Rule.*" It has given the Company the *Exclusive Right*, backed up by all the patent laws. This recognition, this rare privilege, we are immensely proud of.



Largest conveyor of finished lumber in the world. It does the work of many men and horses.



This Catalog Our Only Salesman

WITH this catalog, you are able to keep the profits in your own pocket that you ordinarily pay to your local dealers. Because we do not sell thru dealers, they can't add their several hundred dollar profits to the goods you buy from us. You keep this money *yourself*.

When your dealer says "Don't buy your lumber out of town," ask him where *he* buys the lumber he wants to sell you.

You see he buys his lumber up here and the only money that stays in your town is the *dealer's* profit. Wouldn't you rather have it in your pocket than in his?

This catalog makes possible this saving—and many others. Pick the house that meets *your* need, and write us. We have lots of interesting things to tell you about it.

From "The Canada Lumberman"

"Year after year the price of carpenter labor has been advancing, thus making the cost of lumber higher when in position. Framing material will eventually have to come to the building trimmed to length, and I fail to understand why this fact is not more generally realized. The piece stuff of the future will be furnished to the building ready for position. This thing of cutting and cutting with a hand-saw at the building site until it fits, is too costly."





GENERAL SPECIFICATIONS

IMPORTANT NOTE:—The pictures shown in this catalog are all actual photographs of Aladdin houses sent to us by our customers. There are no fanciful artists' drawings, or photographs of houses not built the Aladdin way. Every house shown in this catalog is erected in Bay City, the home of Aladdin, with just two or three exceptions. This cannot be said of any other similar catalog.

Below are given general specifications for the construction of Aladdin houses. The exact specifications for the house of your choice are sent you without cost just as soon as you write us about the house you like best.

Quantities

A binding guarantee is given to furnish sufficient material for the completion of each house in accordance with the specifications that follow.

Condition of Material

The company pledges itself to deliver your house to you without damage in shipment, or in transit. Anything damaged on arrival will be instantly made good at our expense.

Sizes of Timbers

All sizes of all timbers and lumber will be in accordance with well established engineering and architectural standards of safety and strength.

Quality of Material

All lumber is guaranteed to be of the highest grades ever marketed anywhere in the world. Every Aladdin house, regardless of size or price, comes under this binding guaranty. (Exception: Sheathing lumber is a fine No. 2 quality, and far better than the accepted standard for sheathing lumber.)

General Detail Specifications

Foundation.—Material for foundation is, of course, not included with Aladdin houses, as concrete, stone or brick can be secured in one locality as cheaply as in another. Complete foundation plans are furnished you with detailed instructions for buying this material and building your foundation.

Sills.—Center sill, or sills, are, of course, always furnished to set into your foundation of concrete, stone or brick. All sills are of a size to amply hold all strains and loads in accordance with engineering standards and good practice.

Joists.—All framed, dressed and cut to fit. All joists are of a size to amply hold all strains and loads in accordance with engineering standards and good practice.

Flooring.—The flooring used in Aladdin Houses is clear and knotless, tongued and grooved, accurately matched. It has a beautifully figured grain. The face is steel scraped to give the very best appearance.

Bridgings.—Wood bridging mitted and cut to length furnished for joists of first and second stories of all dwelling houses.

Sub-Floors (for both first and second stories in all Aladdin dwellings).—Inch lumber, dressed, all cut to fit.

Studding.—Size, 2x4 inches, all framed, dressed, and cut to fit and placed on 16-inch centers.

Wall Sheathing.—Inch lumber, all dressed and cut to fit.

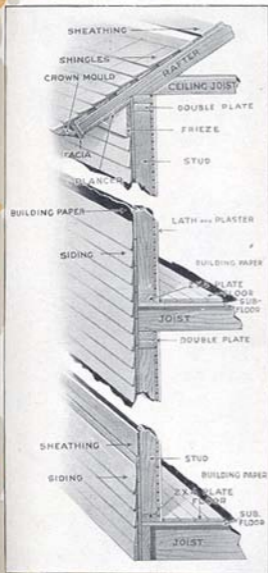
Rafters.—Size, 2x4 and 2x6 inches, all framed, mitted and beveled, dressed and, of course, guaranteed to be perfectly cut to fit.

Roof Sheathing.—Inch lumber, all framed, mitted, beveled, dressed and guaranteed to be cut to fit perfectly.

Shingles (Roof).—Extra Star A Star Cedar.
Building Paper.—Pure White Fibre, tough and dense, for side walls and between sub-floors and finished floors of all Aladdin dwellings.



GENERAL SPECIFICATIONS



Side Walls.—Dollar-A-Knot Cedar Siding, perfectly machined surface and without sap, stain or any defects. Holds paint perfectly. Shingles for side walls instead of siding will be furnished for any Aladdin dwellings without extra charge.

Porch Columns.—All Colonial columns and square columns are of clear material and built with a lock-joint.

Outside Finish.—All outside finish is of high grade Yellow Pine or Fir.

Window and Door Frames.—Complete, including jams, casings, stops and sills. Built of finest stock, beautifully machined and finished.

Window Sash.—Of finest clear fir, O. G. molded, all edges and surfaces sanded and finished with great care.

Doors.—Inside doors, size 2 feet 8 inches by 6 feet 8 inches, carefully built of clear stock, all panels selected for attractive, velvety grain and beautifully finished on surfaces and edges. All doors mortised to receive lock sets. All front doors of special design with glass in upper part. Double action door between kitchen and dining room.

Stairs.—Built from selected clear stock with especial attention to selection of grain. Newel post, molded cap and base, circle tread, steps, risers, railing and balusters carefully finished. All parts of stairs are framed, housed and machined to fit and the whole is carefully boxed by itself to insure arrival in perfect condition.

Interior Woodwork.—Baseboard, base shoe door and window casing all selected clear, beautifully machined and ready to receive the oils, stains and varnishes. Casings are of molded and modern back band design.

Lock Sets.—Frosted brass. Front door sets have night latch and two-way knobs.

Hardware.—Window weights, sash lifts, hinges, nails of all proper sizes, glass, putty, tin flashing.

Paints.—The highest priced paint on the market is furnished for all Aladdin houses. It is manufactured of pure white lead, and color. Thirty-two colors to choose from. Your selections may follow your own tastes for body, trim, porch floor, sash, steps, etc. Send for color card.

Stains.—The best manufactured, are supplied for inside work. You may secure any effects you desire for interior decoration. Stain and varnish, or oil and varnish if you wish to finish in the natural wood, which ever you prefer. Lattice work under porch floors and shingle stain for roofs not included in prices.

Lath and Plaster.—Improved Wood Fibre patent plaster. Grounds furnished for lath and plaster.

Outside Steps.—Steps of correct height and width for design of house. All cut to fit. Cellar stairs always included where shown on floor plan. All dimensions on floor plans are given outside to center for customer's convenience. Send for foundation plan before starting your foundation.

All of which is covered by our all inclusive guaranty.



ALADDIN SERVICE

A Complete Home or a Complete City

ALADDIN Service is equal to any demand made of it. No matter what your requirements are—a single home or a complete city—the Aladdin organization is capable of handling it with the greatest despatch. The Aladdin Company has successfully solved the housing problems of many of the greatest corporations of the world, including the United States Government and the British Government. Aladdin literature contains descriptions and prices for complete cities of 300, 500, 1000, 2000 and 3000 population.

Aladdin Cities—population of 300 to 3,000

Aladdin Cities are the result of careful research work into the necessities of modern civic life. Every necessity which makes for health, comfort, hygiene and expansion is included in these plans. Each city is complete and specifications include complete materials for homes of different sizes, churches, schools, public service buildings, such as stores, offices, hotels, banks, etc., all materials for water and sewage distributing systems, electric service and generating plant, all materials for landscape work, gutters, curbing, sidewalks, etc.,—in short, complete materials for each city.

Send for Book "Industrial Housing"

The Aladdin System means handling the erection of houses with despatch. Each price includes complete material ready-cut—a feature which largely eliminates the necessity for skilled help in erection. Aladdin literature contains over 100 designs of homes from cottages of two rooms to dwellings of 18 rooms, store, hotel, church, school and other types of public buildings; industrial courts showing attractive arrangements of different numbers of workmen's homes; complete cities intended for populations of from 300 to 3,000. Copies of these books will be mailed to those interested.



The Cadillac

See prices on inside of front cover.

THIS bungalow is worthy of your consideration because it was planned by one of our superintendents for a home of his own. It was made exactly as he planned it to suit his experienced sense of fitness and ideas. Thus an individuality was brought about that attracts the attention of every passer-by. It is a home that is pleasant and has an abundance of space within for comfortable living and would give to anyone that possessed it complete pride of ownership.

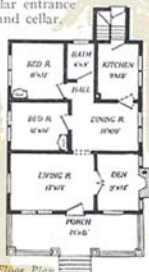
The exterior is artistic and pleasing to the eye. The broad sweep of the roof carried out over the porch and adorned with a dormer, breaking the wide expanse, is perfect in proportion and balance. The square divided lights in the upper sash of the windows lend an added charm to the exterior.

The floor plan comprises a large living room entered directly from the porch. Off of this is a spacious dining room and den. Attractive French glass doors enable the owner to combine these rooms in one. The fireplace shown in the floor plan could be built in the opposite end of the living room, if desired, or could be omitted entirely.

Two bedrooms furnished with closettes as well as bath and kitchen finish the floor plan. Directly at the rear of the kitchen is a very convenient and modern grade cellar entrance addition, giving access to the kitchen and cellar.

For price of the Cadillac refer to inside front cover. See General Specifications on pages 12 and 13.

Detail specifications for The Cadillac will be sent upon request. See Terms on page 2.



Floor Plan
The Cadillac



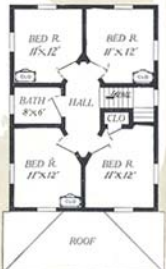
The Virginia

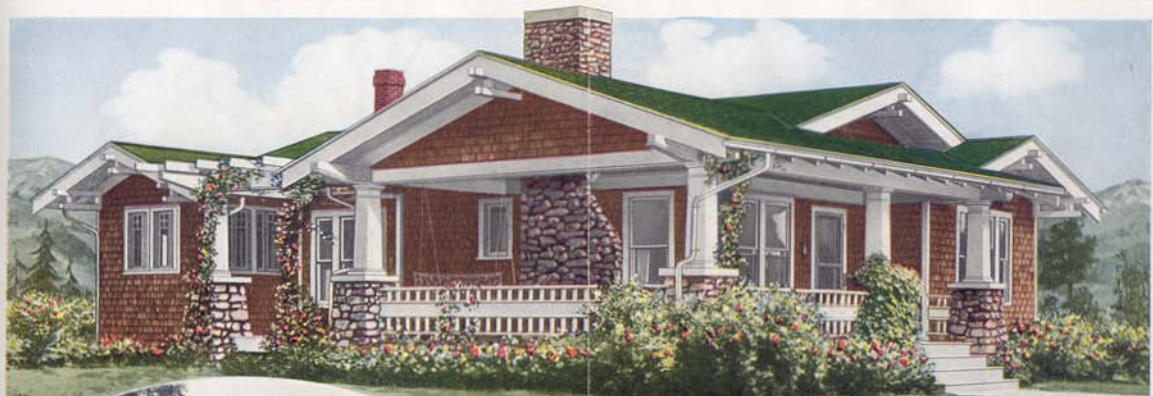
See prices on inside of front cover.

THE Virginia breathes a welcome from every view, inviting you into its big, strong, protecting walls to find comfort, pleasure, and satisfaction. From the front it strikes you pleasingly, and, as you approach, the impression is heightened by the finished detail of roof, eaves, columns, and porch work.

The conservative exterior of the Virginia is appealing. The wide porch stretching across the front is a popular feature especially adapted to the Virginia. Slender porch spindles are extended from the rail to the ground creating a very neat appearance. The bay at the side breaks the long, sidewall, adding attractiveness to the exterior.

For Price of the Virginia refer to inside of front cover. See Terms on page 2 and General Specifications on pages 12 and 13.





The Plaza

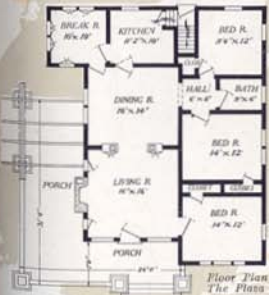
See prices on inside of front cover.

AS a reward for a life of thrift, a woman gained ownership to the spot of land reputed to be the center of the United States. It was well worth her time to search far and wide for a beautiful home design for this enviable location. The center of the United States—the heart of liberty—was deserving of the best. It was unnecessary to say that the home for this location must be rock-ribbed American in architecture.

In the process of elimination which was to determine the suitable design, hundreds were cast aside. Exteriors too plain and interiors too stuffy—was there not one home that would prove suitable? At last the book, *Aladdin Homes*, was consulted. Carefully the pages were turned, here and there was a home that would possibly do, until at last, the home of them all—the one that fulfilled the wishes and hopes of the owners—was found. It was the Plaza. It is a thoroughbred bungalow and bungalow architecture is American.

The very essence of American architecture makes up its attractive lines. The West is portrayed in the beautiful California pergola porch, the East in the interior of the home. The sunny South finds credit in the spacious porch, while the North has loaned the shingled sidewalls representing northern homes in the early days of American history.

If you are interested in making the Plaza your home, write us for the many interesting details you will need before deciding to build. See prices on inside of front cover and general specifications on pages 12 and 13.





The Pomona

See prices on inside of front cover.

AN interesting story is woven in the creation of the Aladdin Pomona Home. One of California's native daughters was brought by her husband as a bride to a charming little New York village to live. While she was delighted with her new surroundings, she wanted to retain some part of the feeling and atmosphere of her golden west.

With the enthusiastic support of her husband, she appealed to Aladdin to produce a home that would radiate the delightful California sunniness and typify the bungalow-craft for which the sunset country is renowned.

Aladdin could not well overlook this unusual appeal and promptly set about the work.

When the sketches, drawings and plans were submitted to the young couple, they were so delighted that they christened the home 'The Pomona,' as being a worthy representative of the delightful little California town of that name, from which the "girl from the golden west" came.

When the home was completed, a photograph was sent to Bay City and Aladdin was given permission to present it in the Aladdin Book of Homes.

You may be sure that since that time many other Aladdin customers have chosen it for their home and you will find Pomona designs nestling beneath trees and surrounded by pleasant gardens in many American communities.

For prices refer to inside front cover. See General Specifications on pages 12 and 13. See Terms on page 2.





The Boulevard

See prices on inside of front cover.

THE Boulevard is the wonder home to many prospective home-builders. The design in both exterior appearance and interior convenience is the result of deep thought in planning. Stop and think of it—three large bedrooms, large living room and dining room with good sized kitchen, bath and closets—and all on one floor! Of course, this number of rooms may be included in other one-story designs, but look again at the sizes of the rooms!

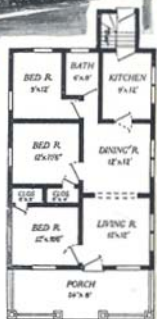
The porch is formed under the main roof—its wide dimensions provide comfort and add much to the general effect of this home. The dormer in the front roof gives light and air to attic and adds much to its beauty.

A wide belt divides the siding on the first story and shingles in gable—the treatment used here is excellent, white belt, brown stained shingles and side-walls.

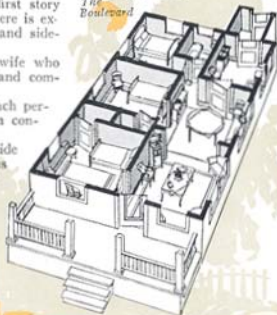
The interior will appeal to every housewife who has a desire to make the home beautiful and comfortable.

The arrangement of rooms and size of each permit excellent decorations and the utmost in convenience. See interiors, page 27.

For price of The Boulevard refer to inside front cover. Study General Specifications on pages 12 and 13. Complete detail specifications will be sent you on request. See Terms on page 2.



Floor Plan
The Boulevard





The Strathmore

See prices on inside
of front cover.

THE Strathmore is different in design—it is a home of individual tastes. By noticing the special details are arranged in groups—double doors in front entrance, double windows balanced on each side, triple windows in dormer above. The double door feature owes its origin to architecture that was real popular in Colonial days. Today it is again coming into general favor in the largest and highest class homes on account of the pleasing effect it gives to both the interior and exterior of the home. The pergola porch at one side is another feature that pleases the





Dining Room
The Dresden



Interior View - The Dresden



Living Room
The Dresden

average home-builder with modern ideas.

The interior arrangement will please you—notice the floor plan. The large living room is graced with a beautiful staircase. From the living room thru wide arch you enter the dining room with kitchen to the rear. One bedroom downstairs with three more and bath on the second floor make just an ideal home.

This design gives plenty of opportunity for home-loving folks to express personality and character in the decorations. This one pictured here is painted in white and trimmed in green. Excellent effects could be had by painting the house a lead gray or a yellow with white trim, or house painted in brown and trimmed with white. The living room—the one room that belongs to the entire family—could be papered or frescoed in deep brown with white ceiling. Space alongside of stairway would make a handsome setting for a davenport, wide seat, or a piano. Of course, everyone has ideas for the decoration of their new home, and to help them, the Aladdin Department of Service will gladly send many more—and this free of charge. Let us help you plan this ideal home—the Strathmore—for your home.

For prices of the Strathmore refer to inside front cover. See Terms on page 2 and General Specifications on pages 12 and 13.



First Floor Plan—The Strathmore



Second Floor Plan—The Strathmore



The Lamberton

See prices on inside of front cover.

THE Lamberton is a genuine American home. Its lines are American—straight, simple and massive. This striking design has many delightfully original ideas. The pleasing proportion of its generous roof and the heavy timbered effects under eaves and windows, gives stability and strength to the general impression. Study the hooded front entrance supported by heavy brackets. A pergola type of porch covering just fits in the right way. Also note the heavy abutment-like porch piers. The exterior is rough cast stucco but is sometimes furnished with shingled walls, the shingles to be stained a pearl gray, or left to weather.

Exterior trim seems to be confined to small divided lights in windows with heavy





*Living Room,
Reception Hall
and Staircase
The Lamberton*



*Fireplace with Bookcases
The Lamberton*

false window sills supported by brackets.

Notice the front entrance—a particular feature of this home. The front door has practically a full length glass which is divided in keeping with the general idea in the windows. The sidelights on each side of the front door are built to harmonize.

Notice the splendid arrangement of rooms. Reception hall, living room, dining room, kitchen and breakfast room on first floor. Note the fine proportion of living and dining rooms. The well lighted reception hall is separated from living room by a wide columned archway with built-in bookcases. (Arch fully described on page 104.)

There are triple windows at side of living room, and small windows near fireplace. Dining room is lighted by two window groups, one double and one triple set, French doors between these rooms. A cosy breakfast room separates dining room and kitchen. Double action doors from breakfast room to dining room. Entrance to kitchen from either breakfast room, grade entrance or reception hall.

Built-in seat at foot of stairs. Roomy clothes closet adjacent.

Stairs open upon central hall on second floor which is surrounded by four large bedrooms. Abundant closet room is provided for. The third floor has unfinished attic 30x30 feet lighted by triple windows at either end, and may be finished economically to give sleeping quarters for servants or day nursery for the children.



*First Floor Plan
The Lamberton*



*Second Floor Plan
The Lamberton*



The Merrill See prices on inside of front cover.

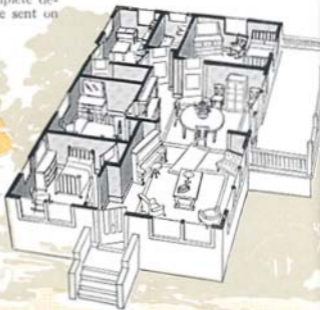
HAVE you ever seen a bungalow similar to The Merrill? Undoubtedly, you haven't, as it is a most recent Aladdin design—one built on both bungalow and Colonial lines.

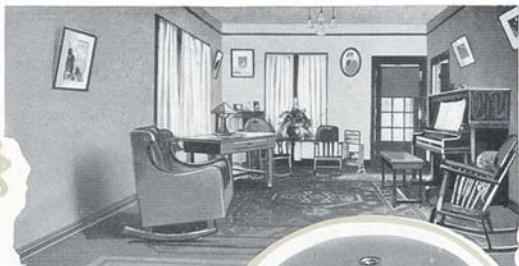
The fact that this home is set close to the ground, built up but one story, finished with shingled sidewalls and heavy eaves supported by brackets, is an assurance of its bungalow nativity.

But here the designer sought a departure from the customary, and Colonial architectural lines were employed. Notice the front entrance with Colonial hood over front door. The side porch is also another Colonial feature which is a very desirable one.

The popularity of The Merrill is assured. Within sixty days' time after the plans were completed, and before it was given space in the Aladdin catalog, we had orders for thirty-two Merrill homes—a wonderful tribute to its practicability.

The interior of this home is one for convenience and attractiveness. The cased arch which makes a wide opening between living room and dining room, offers many opportunities for tasty decorations and arrangements. The living room on the front of the house is well lighted, has good wall space and offers the utmost in comfort to its occupants. The dining room is large, well arranged and offers the additional conveniences of the wide side porch. The plan shows three good-sized bedrooms, closets, bathroom and kitchen with cellar entrance. For price of the Merrill refer to inside of front cover. See General Specifications on pages 12 and 13. Complete detail specifications for The Merrill will be sent on request. See Terms on page 2.





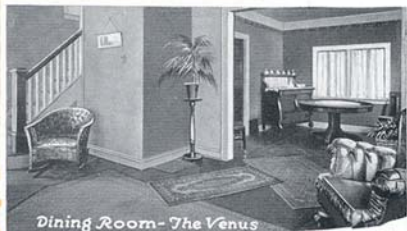
*Living Room
The Boulevard*



*Dining Room
The Boulevard*



Living Room - The Venus



Dining Room - The Venus



Reception Hall
The Brentwood



First Floor Plan—The Brentwood.



Second Floor Plan—The Brentwood.

THIS most charming dwelling has a host of admirers. Though slightly larger than the average home the general attractiveness of the Brentwood has called for a volume production and it is always in demand. Of a quaint English type of architecture it is a home where nothing has been spared to make its beauty and convenience complete. The Brentwood represents the best in homebuilding. Its individuality is apparent in many ways.

Snubbed gables, second story balcony, hooded front entrance, semi-enclosed porch, pergola portecochere with French doors leading to dining room, casement windows in front and full attic, form a delightfully attractive whole. The house will be furnished with either siding, shingles, or stucco exterior. The bay window projects three feet and is ten feet wide. The pergola at the side is furnished with tin roof, giving protection against snow



The Brentwood

See prices on inside of front cover.

and rain. This pergola can be furnished with floor, giving a side veranda instead of porte-cochere. A most unusual and distinctive idea is the little balcony with double French doors from an upper bedroom.

Note the sleeping room leading from sitting or dressing room on second floor. This gives all the advantages of the sleeping porch, with none of its inconveniences. The sleeping room has four windows. Linen closet is arranged in hall, a very large closet from the bedroom, and each bedroom has a closet. Built-in buffet in dining room affords space for dishes, linen and silver.

A Tennessee owner (name upon request) writes about his Brentwood: "My Brentwood is the admiration of the town. It was ready for plastering two weeks after the first nail was driven. I saved about \$700 with Aladdin's help." Could you wish for greater assurance of your own satisfaction than from the pen of this owner?

For prices refer to inside front cover. See Terms on page 2 and General Specifications on pages 12 and 13.





The Roseland

See prices on inside of front cover.

IN the man-made wilderness of crater holes and barb-wire entanglements, misted over with drizzling rain and battle smoke, vocal with the melody of death set to words of steel, designated as No-Man's Land, Capt. Wm. R. Fogarty fought to defend all homes.

There is no question but that the strongest incentive he had was the recollection of his family cozily ensconced in his own Aladdin Home "The Roseland." Such families and homes were the inspiration of many brave men who went to the front and "over the top" in the righteous war against inhuman crime and atrocity. Thoughts of such homes, doubly dear because of the associations of loved ones, inspire men to deeds of valor in wartime and to success in peace.

The Roseland is artistically simple. Quaintly designed double windows with divided upper lights and a pergola roofed front porch with steps at side relieve the plainness of the exterior.

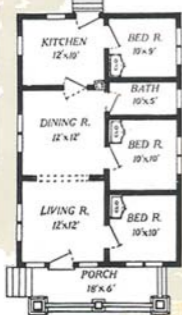
Each of the three bedrooms has closette and is lighted by double windows. Bath and bedrooms occupy one side of the house.

Extra large, light kitchen has swinging door leading to dining room. Light,

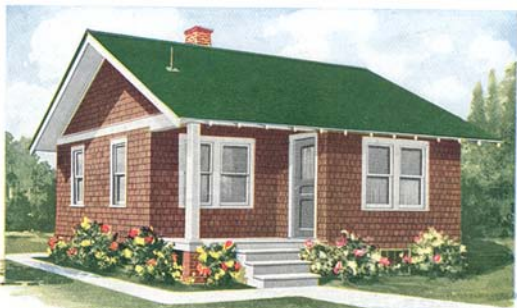
comfortable living room is made en suite with dining room by cased archway.

The double window arrangement is specially adapted for window seats, fern boxes, etc.

For prices see inside of front cover. General Specifications, pages 12 and 13. See Terms on page 2.



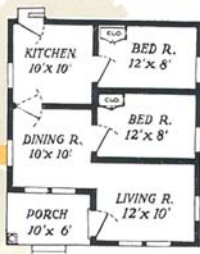
Floor Plan
The Roseland



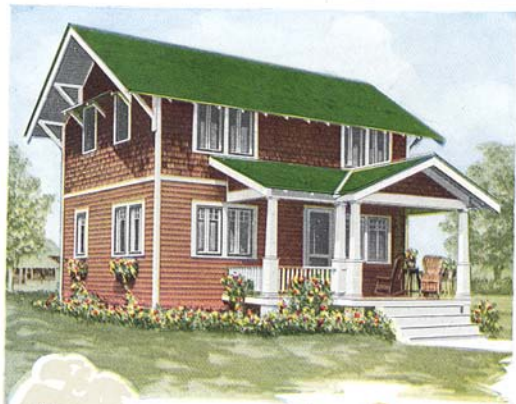
The Thelma

See prices on inside of front cover.

STUDY the floor plan of the Thelma! Imagine furniture, carpets and curtains in place, and a happy family seated comfortably in the living room. Every room in this plan has a charm for the home-loving folks. Wide, light and cheery, the living room of the Thelma is really an exception to those found in the average home. Three outside walls permit a view in front or on either side of the home. Direct access thru arch to dining room is indeed a pleasant feature of the Thelma. And here the dining room, too, is a front room, its two front windows looking directly onto the street. The three windows assure plenty of light and cheerfulness, and the size of this room means ample space for convenience and comfort. The two bedrooms, large in size and well located, with large kitchen off dining room, make up a very appealing home plan. And isn't the exterior delightful? Fashioned on substantial bungalow lines, its beauty as a home is apparent in many ways. Shingled side walls, pure white window sash and trim, wide belt at gable, suggest many color schemes. The delightful exterior, the interior with its coziness and the low price quoted for the complete material, are your assurances of the highest satisfaction. For prices refer to inside front cover. See terms on page 2, and general specifications on pages 12 and 13.



Floor Plan—The Thelma



The Georgia

See prices on inside of front cover.

THE Georgia presents a most unusual combination of true bungalow and two-story house lines. Excellent judgment by the designers gives it character and distinction. Observe the manner in which the exterior walls are divided by a belt, apparently cutting down the height, while the lower story is sided and the upper shingled. Timber brackets balance the overhanging roof, which is splendidly proportioned. The porch is unusual in shape and type, the longitudinal section being covered by a roof that partakes of the form and pitch of the main roof, but is relieved by the jutting gable covering that section of the porch floor projecting a way

the upper shingled. Timber brackets balance the overhanging roof, which is splendidly proportioned. The porch is unusual in shape and type, the longitudinal section being covered by a roof that partakes of the form and pitch of the main roof, but is relieved by the jutting gable covering that section of the porch floor projecting a way





Right Front View of Georgia



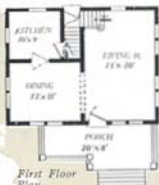
Rear View of Georgia No. 2

from the front door. Square tapering columns supported by pedestals and joined by a well designed railing complete the porch.

Note the paired casement windows which afford excellent light to the interior. The upper gable windows are given an interesting touch by the little bracket-supported hoods. Living room, dining room, kitchen, grade cellar entrance, three bedrooms, bath and closets constitute a complete house-keeping establishment. And everything about this home gives a feeling of quality and refinement. The living room occupies one end of the home, having light from three sides. The handsome stained staircase leading to second floor is placed at the far end of the room. The wall space at the left of the stairway provides an excellent space for piano or large Davenport, leaving a wide stretch of space in the balance of the room, preventing a crowded appearance. The dining room directly adjoins the living room, being separated by a wide cased arch. You will be well pleased with the dining room, as it is of good size and made pleasant by the handsome grouped casement windows on two sides.

The kitchen of the Georgia has attracted many housewives on account of its convenience. The grade cellar entrance makes it possible to enter the basement from the outside of the house without passing through the kitchen.

For prices of Georgia No. 1 and Georgia No. 2 refer to inside of front cover. See General Specifications on pages 12 and 13. See Terms on page 2.



*First Floor Plan
The Georgia No. 2*



*First Floor Plan
The Georgia No. 1*



*Second Floor Plan
The Georgia No. 2*



*Second Floor Plan
The Georgia No. 1*



The Grayson

MY home! Delightfully attractive, substantially erected, practical in arrangement—nothing less could express the sentiments that form the tie between owner and home—the Grayson. A personality that is unusual, marks the designer's work on this bungalow. It is correct in line, and harmonious in detail.

Much thought was expended in planning the interior. Every room has an attraction in its careful layout for light and convenience. The living room and dining room are both at the front of the home, being divided by French doors. Butler's pantry between dining room and kitchen, is modern in thought and practical in

effect. Both doors on butler's pantry are of the double action type. Large kitchen, well lighted, is another feature of the Grayson. Notice the efficient layout—from the kitchen, direct access may be had to rear porch, hall leading to living room and front entrance, cellar entrance, and to butler's pantry and dining room, and this with no sacrifice of necessary wall space for stove, work-table, kitchen cabinet, etc. The hallway from living room opens onto the large bedrooms, with closets, bathroom and linen closet.

For price of the Grayson, refer to inside of front cover. See General Specifications on pages 12 and 13, and Terms on page 2.



Floor Plan
The Grayson

See prices on inside of front cover.



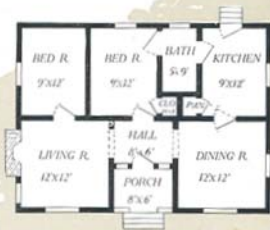


The Plymouth

See prices on inside of front cover.

SIMPLE square lines have been utilized in this charming home. The interior plan is indeed interesting. The living room is separated from the dining room by the hall, with a vista of two arches. Light is admitted to hall by windows on each side of front door. Two bedrooms, bath and kitchen complete the snug design. The exterior is shingled, and shows very wide eaves with exposed rafters. Although the chimney is shown on the outside of the house, it can be placed in any part of the home.

For prices of the Plymouth refer to inside front cover. See General Specifications on pages 12 and 13. Detailed specifications of the Plymouth will be sent on request. See Terms on page 2.



Floor Plan—The Plymouth





The Franklin

See prices on inside of front cover.



ARE you pleased with the lines shown in the Franklin? This home has appealed to a great many. It was first erected in Bay City, the home of Aladdin.

The excellent work of the designer is shown in the illustration. The keynote of the exterior plan is massiveness. Note the two large columns. They add strength to the front of the home and harmonize with the wide and heavy barge board. These columns are two feet square according to the plan.

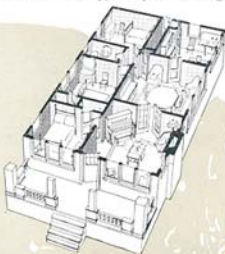
Another feature that adds much to the attractiveness of the Franklin is the porch pedestals that carry the porch balusters, which you will note do not connect with the large supporting columns on the front. The pedestals—four in all—are a departure from the usual type of porch arrangement used in bungalow architecture.

And the Franklin interior has much to interest you. Notice the room arrangement.

For Price refer to inside front cover. See General Specifications on pages 12 and 13 and Terms on page 2.



Floor Plan
The Franklin





The Burbank

See prices on inside of front cover.

THIS picture tells a better story of Aladdin Golden Rule Service than anything that could be put into words. The owner of this Aladdin sent us this picture because he was proud of the result of his industry and appreciative of the individuality and distinction of his home.

In his choice of an Aladdin home, the extreme simplicity of outline of the Burbank appealed to him strongly and he saw the possibilities of shingled walls in a velvety brown, a soft green roof and an edging of pure white about the windows and eaves. The partial seclusion of the commodious porch with trailing vines took his fancy. But he is especially enthusiastic over the convenience of the rooms. Three fine bedrooms, a dining room of unusual proportions and an excellent living-room, having grouped windows, afford ample accommodations for a large family. The kitchen is lighted by two windows, has cellar stairs and outside entrance.

Beautifully finished woodwork and floors of the purest lumber complete a home to the last degree of satisfaction, and should you select a Burbank, or in fact any other Aladdin home, you can most certainly be assured of a result as splendid as is illustrated on this page. In further proof of this we will be glad to furnish you with the names of many Aladdin home owners who will vouch for their satisfaction, who will tell you of the money that they have saved and will even urge you to join the big Aladdin family.

For price of the Burbank refer to inside of front cover. General Specifications of the Burbank will be found on pages 12 and 13. Detailed specifications will be sent you upon your request. See Terms on page 2.



Floor Plan
The Burbank.



The Kentucky

See prices on inside of front cover.

IS it not a beauty in every line? Simplicity is the keynote, yet what could be added to improve its attractions? While it reminds one of the stately colonnades of old Colonial mansions, it still retains the delightful atmosphere of modern American bungalows. The broad expanse of porch, with plain Tuscan columns and projecting eaves successfully blends these two most desirable types without losing the dignity of the one nor the cozy hominess of the other. Double front doors seem to open wide a hospitality of true American spirit. Casement windows with divided lights swing into living room, dining room and bedroom from the porch. Both living room and dining room are unusually well lighted.

The Kentucky Bungalow has made a remarkable impression on our customers, having attained as great a degree of popularity as any design we have ever produced. You will be interested in the Interior Illustrations of the Kentucky shown on page 87 of this book. The two views shown—living room and dining room—give a fair idea of the large amount of space provided for furniture arrangements. The owner of the Kentucky from which these interior views were made included a built-in buffet in the dining room. The living room is very large and surely presents an inviting appearance. The Department of Service has many excellent suggestions on file for interior decoration of the Kentucky. We will be glad to send you suggestions upon request or work out the details of your ideas if you will send them to us. The window blinds shown are included with the Kentucky.

Through the many years of popularity, the Kentucky home has gained many friends until today every state in the United States, with two exceptions, claims three or more Kentucky Aladdin homes—and each owner is more than pleased with the plan and design.

Refer to inside of front cover for prices. Study General Specifications, pages 12 and 13. Exact detail specifications of the Kentucky will be sent upon request. See Terms on page 2.





The Stanhope

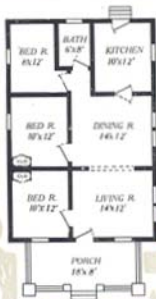
See prices on inside of front cover.

ARE you not pleased with the Stanhope? Can you conceive how with straight architectural lines any more pleasing or substantial style of construction could have been worked out? Notice what a strong yet artistic appearance is given the entire front by the heavy porch pedestals, square porch columns and porch rail.

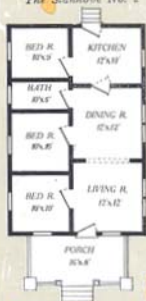
How in keeping are the small lights in bungalow door and the upper divided lights in all windows. And when it comes to interior plan, it would be very difficult to work out a more convenient arrangement. The wide arch between living and dining rooms gives an appearance of one large room.

The double action door leading to a kitchen large enough, yet none too large, completes the living part of this compact cozy home. Three well lighted, suitable sized bedrooms give as much sleeping room as is frequently found in a much larger home. For anyone desiring a six-room modern house all on one floor, the Stanhope is a great favorite. The Aladdin readi-cut system of construction offers you a big saving on this home. You are now able to dodge the high cost of building because you pay for no waste of materials or labor in erecting an Aladdin. There are many owners of the Aladdin Stanhope throughout the country. Probably there is one near you. We will send you names of owners—you can pay them a visit and inspect their home and materials.

See price on inside of front cover. Study General Specifications on pages 12 and 13. Complete detail specifications will be sent you upon request. See Terms on page 2.



Floor Plan
The Stanhope No. 2



Floor Plan
The Stanhope
No. 1





The Stanhope



See prices on inside of front cover.

The Pasadena

THE Pasadena—the beautiful. A home of sunshine, flowers, trees and foliage! This remarkable home is one of Aladdin's most notable offerings to home builders. Remarkable in design, remarkable in arrangement, and lastly, remarkable in cost of materials.

The design is a wonderful result of the work of a careful architect of bungalow homes. It represents the new thought in bungalow architecture. The departure from the rough and blunt lines to the more beautiful and substantial touches is symbolical of one's desire in a home.

California—its sunshine and flowers veiled in a blue sky—is evident in its every line. Setting, as it does, close to the ground, climbing ramblers help express the dainty and artistic feeling of this home design. And the room arrangement is no less a success. Both plans hold a charm that is unusual—both have convenience, comfort and spaciousness that seem impossible to include in a home of these dimensions. On a corner lot, the front entrance of the Pasadena, artistically hooded would give access to one thoroughfare while the handsome pergola porch would lead to the other.



In Floor plan B the living room is somewhat larger than in Floor plan A, but in both cases it is a large room, and well lighted. The arrangement is somewhat different in the two plans, plan A having an extra bedroom. Throughout both plans, however, the architect has kept in mind that light and fresh air are necessary to the everyday life of the modern family and these have been provided for in abundance. Closets, always useful, are provided for in both plans and as a part or as a whole either floor plan of the Pasadena will satisfy the most fastidious. The cost of materials for the Pasadena, all manufactured and ready to erect, is indeed economical. Aladdin's system of building again puts the beautiful in homes within the reach of many. For prices of the Pasadena—either size—refer to inside of front cover. You will also be interested in the specifications on pages 12 and 13. See terms on page 2.



Floor Plan A



Floor Plan B

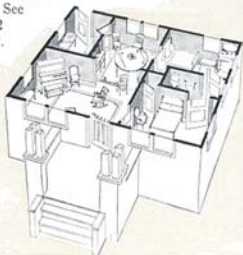


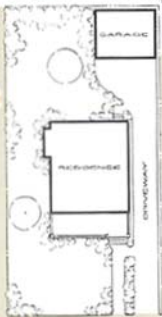
Floor Plan—The Maples

The Maples

See prices on inside of front cover.

THE MAPLES is of the more conservative type of bungalow. At first glance, you will notice that simple lines are here made into a practical, substantial home. The low roof, wide eaves, odd windows, exposed rafter ends and altogether attractive simplicity make a very pretty exterior without going to extremes in decoration. The spacious living room at the front has an abundance of light and comfort with outside entrance, entrance to front sleeping room and wide entrance to the dining room. Dining room is easily reached from back bedroom, living room and kitchen, and is well lighted on all sides. The kitchen is placed opposite dining room with outside entrance to the rear. For price of the Maples refer to inside of front cover. See General Specifications, pages 12 and 13. See Terms on page 2.





D ID you ever really consider the wonderful difference in the meaning of the words house and home?

A house is a structure to live in.

Home—the dearest place on earth—is that structure that is a part of you—made so by its association with your family, their joys and sorrows, their hopes, aspirations, and fears. It is a refuge from the trials and struggles of the outer world. It is a visible expression of yourself, your tastes and character.

SERVICE!—that golden touch which changes the ordinary into the artistic.—It is that which is not bounded by the sale, but is added to complete or round out the transaction.

Aladdin's interest does not stop when the order has been received—but ever bearing in mind the many nice discriminations to be made in the locating, adorning, and surrounding of the home, the Department of Service was early established—to advise, direct or take full charge, as the home builders may desire, of this part of home making. As we so often said, it is the use of such skill that changes a place to stay,—a *house*, to the dearest place on earth, a **HOME**.

Perhaps you find it difficult to express your tastes, as you feel

An illustration in the top left corner shows a young child with dark hair, wearing a white shirt and dark vest, kneeling on the floor. The child is looking through a microscope. To the right of the child is a large, dark, feathery plant. In the background, there is a window with a grid pattern. The entire scene is framed by a decorative border with floral and leaf motifs.

DEPARTMENT OF SERVICE

Conducted for
Aladdin Home
Owners

them, when it comes to the arrangement, furnishing, and decoration of your home. You may not be sure of yourself. Right there is where our Department of Service can help.

This department is in the hands of people trained in the planning and arrangement of artistic exterior and interior effects for the home—design, decoration, landscaping, etc. It is organized and maintained for a single purpose—to serve our customers. There is no charge for this service.

If you have a general idea of color in the exterior painting plan that you would like to follow, let the service department work out the details. In the interior finish and wall colors you may either put the responsibility entirely up to the department, or by suggesting general preferences, it will work to your suggestions and carry out the details.

By furnishing the department with the size of your grounds, sketches will be worked out for attractive planting of shrubberies, plants, trees, etc., with lists of seeds and vines.

In fact, the Department of Service will help to make your Aladdin house *home*, in every sense possible.

In seeking this service you have only to address the Department of Service, care of this company. The service this company renders its customers in decoration and planting would cost from fifty to five hundred dollars if you consulted the average landscape architect. It is but one of the links in the chain that forms such a close bond between our customers and us.

Duplex Houses

A special folder has been prepared showing two-apartment or Duplex Houses. If you are interested send for this folder by writing to the Aladdin Co. offices nearest you.

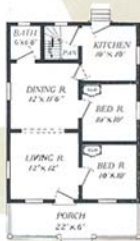


The Princeton

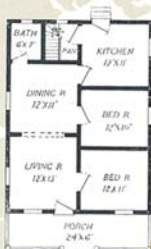
See prices on inside of front cover.

A COSY, comfortable, convenient, warm home; that exactly describes this remarkable house. It is as good a building in every sense of the word for its size as money can buy. It is designed and built exactly like any good contractor would build it. Study the floor plan and see how conveniently the house is laid out. Note the arch between living room and dining room, large porch, the cellar entrance, etc. A careful study of the arrangement of rooms will show convenience at every point.

For price of the Princeton refer to inside of front cover. See Terms on page 2 and General Specifications on pages 12 and 13.



Floor Plan
The Princeton No. 1



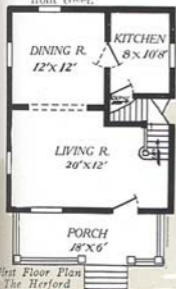
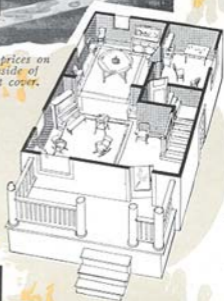
Floor Plan
The Princeton No. 2



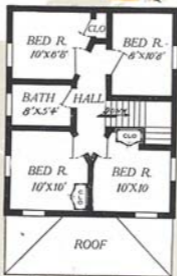
The Herford

See prices on
inside of
front cover.

THE Herford is an achievement in building a two-story, four bedroom home. It is of the ever popular square type which gives an air of massiveness. Although the Herford is designed along conservative lines, it is not commonplace. The interior of the Herford will surprise you—the fact that it is a larger home than you expect could be possible at the price, is impressed upon you when you note the number and size of rooms. See Terms on page 2 and General Specifications on pages 12 and 13. For price refer to inside of front cover.



First Floor Plan
The Herford



Second Floor Plan
The Herford



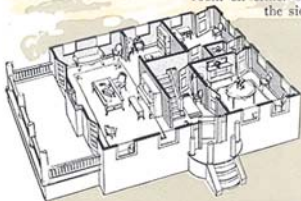


THIS modern home with its distinctive features has a large number of admirers. The general appearance, both design and arrangement of detail, place it in a class of its own. The general lines are taken from New England and Southern Colonial architecture, while many original ideas are added.

The windows, with divided lights and simple dormers breaking the front roof, are purely of New England origin, and are often referred to as "severe, simple and quaint."

Credit is due Southern designers for the semi-circle porch and front entrance detail. By closer inspection you will notice that the heavy front door is balanced on either side by side-lights. The detail in both door and side-lights harmonize, as both have glass in upper half. Besides the decorative value of this feature it is practical in that it provides a flood of light in the reception hall, lighting stairs and passageways. The semi-circle porch with balcony effect is supported by four large turned columns.

The broad, spacious side porch is also of interest. It is one of the most typical features of Colonial architecture. The balusters and rail are extended around the porch, entrance to be had from the two side doors in the living room on either side of the fireplace or from the steps at the side.





The Colonial

The interior expresses modern ideas. The large size porch is an excellent summer season auxiliary to the living room, as both run parallel, with entrance doors on either side of the fireplace. The living room is arranged at one end of the home. The size, 15 feet wide by 30 feet long, offers many opportunities for different and tasty arrangement of furniture. The fireplace which is shown in the plan adds much to the comfort and attractiveness of the room and is well located. The library which directly adjoins living room has excellent wall space for bookcases and library furniture. The location of this room makes it suitable for either library or den. The arrangement of dining room and kitchen is ideal. The dining room at the front right corner and kitchen at the rear are divided by butler's pantry.

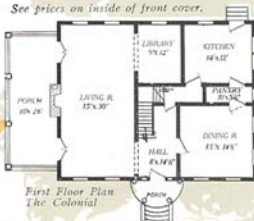
Upon request we will send complete detail specifications and go into all the interesting facts.

For Prices of Colonial refer to inside of front cover. See General Specifications on pages 12 and 13. See Terms on page 2.

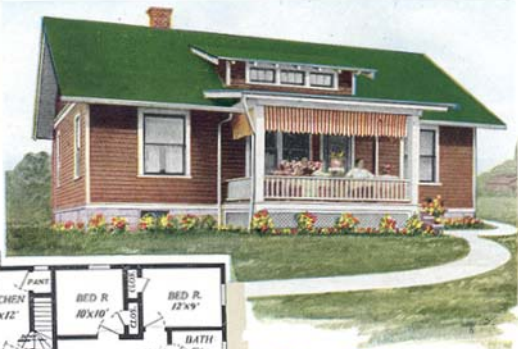


Second Floor Plan
The Colonial

See prices on inside of front cover.



First Floor Plan
The Colonial



Floor Plan
The
Florence.

The Florence

See prices on inside of front cover.

PRIDE of ownership! The very attitude of every member of the family in this picture expresses pleasure and satisfaction with their home. To the lover of simplicity the Florence has a strong attraction, its well balanced and commodious

porch, finely proportioned roof and dormer window, wide front windows and shingled gables all being in perfect harmony. And the material from which this home is moulded is all as perfect as can be taken out of the forest. The owner has no lingering memories of paint covered defects to spoil his pride of ownership. The siding, the trim, the shingles, and the porch work are entirely free from knots or other defects.

The interior appeals to the housewife. It is surprising to learn that there are three fine bedrooms, besides living room, dining room, kitchen and bath, giving a large family ample accommodations. Living room is centrally located, which is much desired by many families. The three bedrooms, bath, and living

room surround the hall. Two bedrooms have built-in closets, the other an Aladdin closette. Beautiful floors and woodwork distinguish all Aladdin houses and of course give the finished effect to the Florence as to all our other designs.

Terms on page 2, and General Specifications on pages 12 and 13.





The Yale

See prices on inside of front cover.

THE realization of a complete home is gratified in the Yale. The judgment of Aladdin designers has been wonderfully approved in the hundreds of sales of this design. When you fully comprehend all that it offers, you will be as enthusiastic about it as every customer who is living in it.

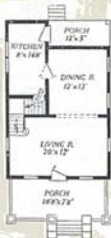
Four gables afford a surprising amount of room in the second story. Concrete pedestals support square porch columns and the long balusters of the porch railing are different from the usual type. A beautiful front door leads into the living room which extends full width of the house. Arched opening separates living room from dining room. See photos bottom page 88. Kitchen, cellar way and rear porch complete the first story. On the second story are found the bedrooms, bath and closet. For price of the Yale, refer to inside of front cover.

See General Specifications on pages 12 and 13. Complete detail specifications for the Yale will be sent on request.

See Terms on page 2.



Second Floor Plan
The Yale



First Floor Plan
The Yale





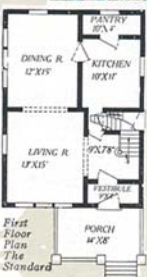
The Standard

See prices on inside of front cover.

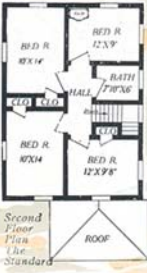
YOU will agree with Aladdin customers and owners of the Standard in their claim that "it is the best square type house ever offered to home builders." Greatest in amount of space, best in point of design, most convenient in arrangement, and all this is at a price that is much lower than it would cost you if you were able to buy thru any other source. Notice the architectural detail under the eaves, porch, and the dormer.

Close inspection of the illustration gives many pleasant surprises. The scrolled brackets which are especially machined for the Standard, add a finished touch to the sweeping eaves. Possibly you have noticed that this has been carried out on all eaves—dormer and porch included. The broad belt is also used to advantage here.

The porch, distinct in type and attractiveness, contributes much to the general appearance of the Standard. Hip roof, heavy boxing and scrolled brackets, tapering porch columns and full length spindles, all form a delightful contrast to the ordinary. Two ideas of arrangement are shown in the photographs. In the large illustration, the steps are placed at one side connecting with the walk that leads to grade or



First Floor Plan The Standard



Second Floor Plan The Standard





Living Room - The Standard



side entrance. The small illustration shows steps at front of porch.

The inside arrangement of the Standard appeals to many. Notice the vestibule entrance. This is a very useful feature in that it provides an excellent place for hanging wraps. Besides this, it is a valuable feature in cold weather. Thru the

next door we enter what might be called a reception hall and the impression is very pleasing indeed. The handsome exposed staircase can be beautifully stained and varnished and gives one an idea of the rich effect on the interior. You will find that the living room and dining room are extra large—and that will suit you—roomy and especially well-lighted.

The kitchen is unusually convenient. First, the size is ample. Next, the arrangement saves many steps. The pantry is at the rear while the dining room is but a few steps through a double action door. Either the reception hall or the grade entrance leading to basement or outside may be reached directly, meaning a saving of time and exertion.

The second floor has four model sleeping rooms and the arrangement with bath at the head of the hallway is perfect. Each of the four bedrooms shown on the plan are extra large and have ample wall space for beds, dressers, etc. Three of the bedrooms have large closets directly adjoining—the other bedroom is provided with the convenient Aladdin closette. For complete information on the closette refer to page 104. All ceilings in bedrooms are square and not hipped. You will be greatly pleased with this home—The Standard.

Refer to inside of front cover for price of the Standard. See General Specifications, pages 12 and 13. Complete detail specifications for the Standard will be sent on request. See Terms on page 2.





The Worthington

See prices on inside of front cover.

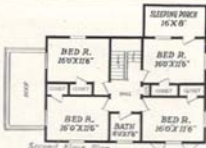
EXCLUSIVENESS of design—that's what the Worthington bespeaks. Of a quaint type of architecture, it stands forth among the higher classed houses manufactured by The ALADDIN COMPANY as one of the best.

Beginning with its porch, it is a design that is significant for its many original features. Notice the broad front roof which is set off by two dormer windows. This roof is a decided characteristic of the Worthington. Finished in the famous "DOLLAR-A-KNOT" siding and painted a pure white or gray with the roof a solid green or black,

this house is bound to equal in beauty and design, any of the better class homes in any city or town. In every part of its structure the master designer who brought it forth has matched beauty with comfort. From the little vestibule directly in the front and center of the Worthington, which will be found to be very handy, especially during inclement weather—to the breakfast room in the rear of the house, everything is built with the thought of comfort plus beauty. The big living room, with a huge fireplace leads off the reception hall through swinging French doors. Directly off the living room and separated from same by more French doors is the sun parlor, with windows all around. On the right of the first floor is a large dining room with extending bay windows in the front, these adding a remarkable degree of pleasantness to the room. In this a window seat might be built. French doors lead from the reception hall and lend an air of exclusiveness to it. Directly behind the dining room and connected by a swinging door is a good sized kitchen. A delightful little breakfast room is directly off the kitchen as are also the stairs leading to the basement and rear of the house. An ornamental staircase

leads from the rear of the reception hall to the second floor. Four large bedrooms, well lighted and airy, lead off the main hallway as does also the bathroom and a small but decidedly handy linen closet. A sleeping porch of good dimensions is directly behind and connected with the right rear bedroom. Each bedroom has a closet attached and as usual, comfort is typified everywhere.

Study the floor plan and then turn to pages 12 and 13 where you will see the General Specifications. The price is listed on the inside of the front cover and the terms can be found on page 2.



Second Floor Plan
The Worthington



First Floor Plan
The Worthington





The Worthington

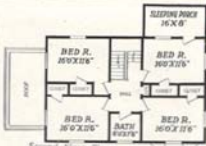
See prices on inside of front cover.

EXCLUSIVENESS of design—that's what the Worthington bespeaks. Of a quaint type of architecture, it stands forth among the higher classed houses manufactured by The ALADDIN COMPANY as one of the best.

Beginning with its porch, it is a design that is significant for its many original features. Notice the broad front roof which is set off by two dormer windows. This roof is a decided characteristic of the Worthington. Finished in the famous "DOLLAR-A-KNOT" siding and painted a pure white or gray with the roof a solid green or black, this house is bound to equal in beauty and design, any of the better class homes in any city or town. In every part of its structure the master designer who brought it forth has matched beauty with comfort. From the little vestibule directly in the front and center of the Worthington, which will be found to be very handy, especially during inclement weather—to the breakfast room in the rear of the house, everything is built with the thought of comfort plus beauty. The big living room, with a huge fireplace leads off the reception hall through swinging French doors. Directly off the living room and separated from same by more French doors is the sun parlor, with windows all around. On the right of the first floor is a large dining room with extending bay windows in the front, these adding a remarkable degree of pleasantness to the room. In this a window seat might be built; French doors lead from the reception hall and lead an air of exclusiveness to it. Directly behind the dining room and connected by a swinging door is a good sized kitchen. A delightful little breakfast room is directly off the kitchen as are also the stairs leading to the basement and rear of the house. An ornamental staircase

leads from the rear of the reception hall to the second floor. Four large bedrooms, well lighted and airy, lead off the main hallway as does also the bathroom and a small but decidedly handy linen closet. A sleeping porch of good dimensions is directly behind and connected with the right rear bedroom. Each bedroom has a closet attached and as usual, comfort is typified everywhere.

Study the floor plan and then turn to pages 12 and 13 where you will see the General Specifications. The price is listed on the inside of the front cover and the terms can be found on page 2.

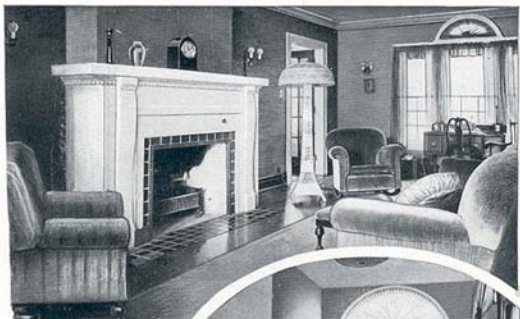


Second Floor Plan
The Worthington



First Floor Plan
The Worthington





*Living Room
The Villa*



Sun Porch - The Villa



Dining Room - The Villa



The Sheridan

See prices on inside of front cover.

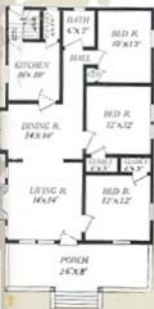
AN unusually attractive exterior and a sense of roominess are features that make the Sheridan one of our most popular bungalows. The low, sloping roof, the scrolled eaves and shingled porch and step rails, together with the siding, permit a great latitude in the decorative scheme and with the use of harmonious painting and staining materials, these features can be developed in a most pleasing manner. The expansive porch, which extends across the entire front, is well shaded by the broad, overhanging roof.

The convenient and inviting arrangement of the several rooms are outlined at the left. Your attention is called to the square and good dimensions of all the rooms, especially the living room, with its attractive group windows and arch leading to the dining room.

Three good sized bedrooms with closets complete the plan of the Sheridan No. 2.

See bottom of page 83 for interior photographs of the Sheridan living room and dining room.

For prices of the Sheridan No. 2 refer to inside front cover. See Terms on page 2 and General Specifications on pages 12 and 13.



Floor Plan—The Sheridan No. 2





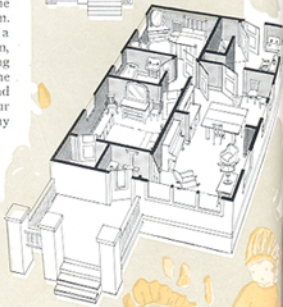
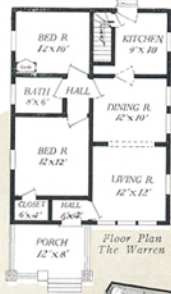
The Warren

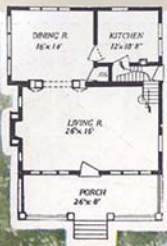
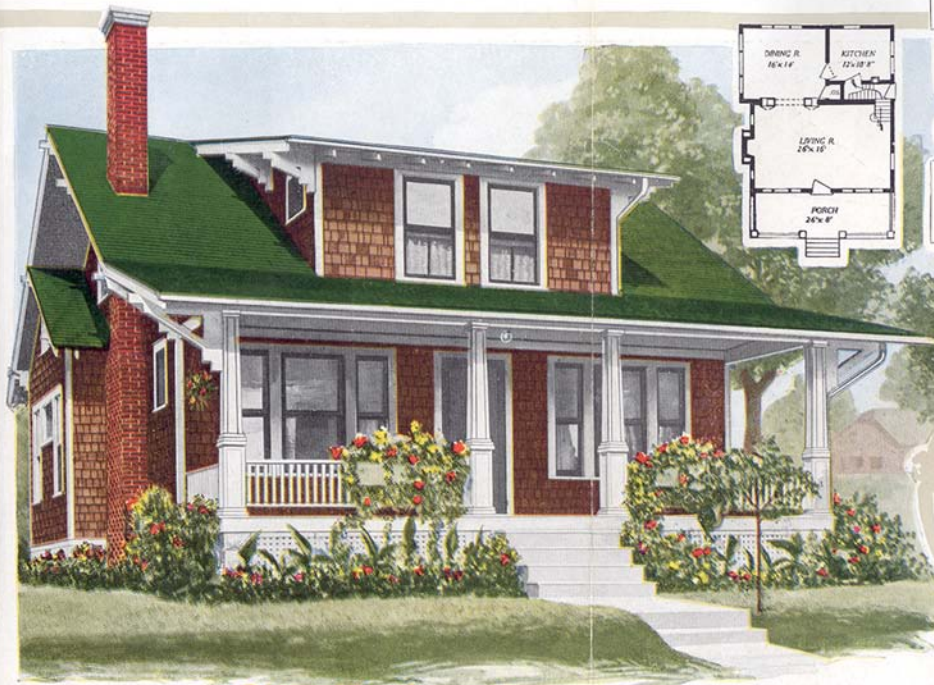
See prices on inside of front cover.

STUDY the floor plan of the Warren and see if you can find an inch of waste space. It is the most practical of homes. There is much in the Warren that you cannot see at first glance. For instance, notice the short hallway inside the front door—just a dandy little place to hang the wraps of evening callers. The clothes closet built next to the hallway and opening into the bedroom is just ideal. Off the front hallway is the living room, and that it is well lighted by three windows at the front is noticed the moment you enter, and the wide arch dividing the living room from the dining room really makes them one big room. Through a door in the dining room you enter a hallway. It leads directly to the front bedroom, bathroom and back bedroom, separates living rooms from sleeping rooms so that neither one is disturbed by the other. The woodwork and floors can be finished any way you like for our beautiful Oregon Fir is unsurpassed by any kind of interior finish.

Both front and back bedrooms are compact. Now visit the home workshop—the kitchen. One can reach the dining room, basement or outdoors very easily.

For prices refer to inside of front cover. See Terms on page 2 and General Specifications on pages 12 and 13.





The Marsden

See prices on inside of front cover.

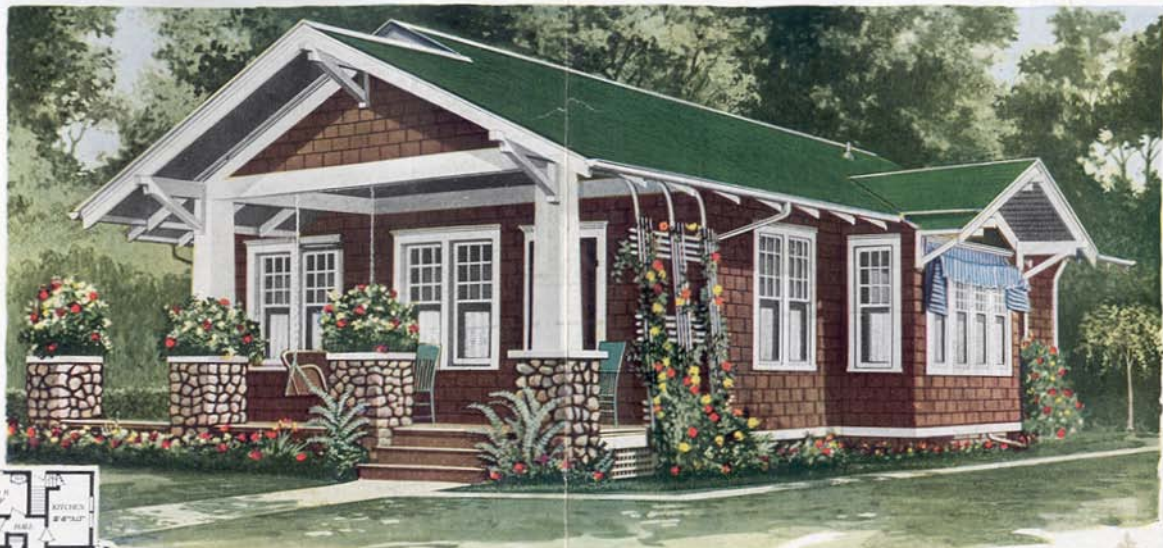
A different bungalow is this beautiful Marsden. With all the characteristics of a bungalow, with all the smart appearance of one, it still gives off the idea of a home of great dignity. Conceived by a leading architect of the bungalow type of home and worked out in detail by master Aladdin designers, the Marsden is a home that is pleasing many satisfied ALADDIN customers today. This home has been one of the most successful houses designed in a number of years.

Study the lines of this bungalow and note how artistically appointed is every part—the straight line dormer with exposed eaves in exact keeping with the eave of the front porch—the extended bay window with roof and brackets, breaking the gable end—the windows of different sizes and styles and location—these and many other points make the exterior of the Marsden truly artistic.

In interior planning and arrangement, this modern bungalow presents the last word in designing. A large living room, 26x16 extends across the entire front. It is separated from the dining room by an arch with beautiful built-in bookcases. A well arranged kitchen with stairs leading to grade landing complete the first floor.

Ascending to the second floor by the semi-open stairs at the end of the living room, one enters a central hall from which easy

access is gained to each of the three large bedrooms and the bath. Clothes closets with each bedroom—a most appreciated adjunct for every sleeping room. For price of the Marsden refer to inside of front cover. See Terms on page 2 and General Specifications on pages 12 and 13.



Floor Plan—The Winthrop

See prices on inside of front cover.

The Winthrop

CAN you imagine this bungalow nestling among trees and shrubbery on your own lot? A few cobblestones are gathered from nearby fields and when blended with brown stained shingles, natural shrubbery and a setting of velvety green, the observer is fascinated.

A bungalow should always be set close to the ground. When local conditions seem to make this impossible, the same results can be secured by terracing close to the building.

The Winthrop is of the pure bungalow type—low, a touch of rough stones, bracketed eave supports, heavy timber work, shingles, and broken outlines.

And as the real bungalow is always compactly and conveniently arranged inside—you will agree that the Winthrop is typical. The large living room is lighted by three group windows and the fireplace at the end forms an inviting nook. Extra length is secured to the dining room by the interesting bay window. Lots of wall space is available in the front bedroom. The centralized hall, and entrance from dining room, kitchen, bath and bedrooms is a good feature. Bath located between bedrooms. Can you help falling in love with this interesting bungalow?

For price of the Winthrop refer to inside of front cover. See General Specifications on pages 12 and 13. Detail Specifications for the Winthrop will be sent on request. See Terms on page 2. Masonry is not included.



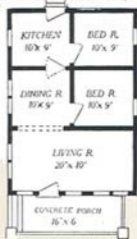


The Leota

See prices on inside of front cover.

“CRAFTSMAN” front door, windows grouped in pairs and side walls shingled are the particular ideas molded into The Leota. Another new thought is the side entrance to the porch. The porch posts should be very heavy and built of concrete as well as the porch floor. The interior arrangement is well illustrated by the floor plans shown above. This little gem of a bungalow will match, in both material and construction, homes of many times its cost. Beautifully grained interior wood work, frosted brass hardware fittings and the finest stains and varnishes combine to give you a most interesting bungalow. You'll like every feature of it. The Leota is built of the same materials and in identically the same way as the Aladdin house which was erected at the Panama-Pacific International Exposition, and which was awarded the highest prize by the International Jury of Awards. It is built of the same material and in identically the same way as the homes of the President and the other officers of The Aladdin Company. The same beautiful, clear and flawless lumber, high priced paints, stains, varnishes and hardware are furnished as in all Aladdin houses. While no cellar is shown under The Leota from which this picture is taken, you can of course have a full cellar, as in any other home.

For price of the Leota refer to inside of front cover. See General Specifications on pages 12 and 13. Detail specification of the Leota will be sent on request. See Terms on page 2.



Floor Plan—The Leota





The Villa



Second Floor Plan—The Villa



First Floor Plan—The Villa

IT is difficult to select words suitable to describe the beauty and convenience of this thoroughly modern home. While the architectural lines are strong, yet the artist has rendered them extremely pleasing to the eye.

The pergola effect at the front and each side, combined with the stately columns, lends a certain dignity and grandeur that at once places The Villa in a class by itself. Like the beautiful everywhere, this house challenges the lover of the artistic and furnishes a concrete example of stateliness and strength which at the same time is an embodiment of the finest culture.

On passing through the vestibuled front entrance into the large and spacious hallway, the visitor's attention is at once attracted by the beautiful and easily ascending stairs at the rear, and on each side by the double French doors leading either to the living room on the right or the large dining room on the left. Without changing one's position, there is easily visible across the living room the French doors leading to the sun parlor. This sun room extending the entire width of the house, affords by means of the casement windows a protected porch in pleasant weather or a comfortable lounging room when the elements outside so dictate. The breakfast room, ample for a small family dining room; a butler's pantry and a conveniently arranged kitchen complete the first floor. On the second floor, opening off a central hall, are the owner's room with bath and three other corner bedrooms with closets. A large well lighted third floor furnishes, when desired, convenient space for the maid's quarters. (See interior photos of the Villa on page 55.)

The Villa shown in the illustration is located in Bay City, Michigan, but a short distance from the Aladdin Company's general offices. Interesting, indeed, would a trip of inspection of this home be to anyone contemplating its erection. The landscape work, interior decoration and other details in connection with this beautiful home, will be of great interest, and will, no doubt, offer many suggestions for your Villa home. The Aladdin Department of Service, is ready to submit suggestions for landscape work, interior decoration, etc.

This service has proven very popular and valuable to home builders.

There are many other features of the Villa that cannot be included here on account of limited space. On request, this information will be sent to you.

For price of the Villa refer to inside of front cover.

See Terms on page 2 and General Specifications on pages 12 and 13.

The Shadow Lawn

See prices on inside of front cover.

DID you ever see a more beautiful picture of its kind than the one shown here? A mass of lights and shadows softening the greens, browns and grays of the foliage; shingles and cobbles delight the eye. You can almost feel the touch of the sunbeams patterning the lawn, and you just want to stroll up the steps and into the inviting shade of the porch. Most effectively has the pure white that borders every outline been used to contrast the deep brown of the shingled upper story.

The exterior of the Shadow Lawn is one that has appealed greatly to our customers. A slight diversion from the customary is had in the wide sided first-story with second story shingled.

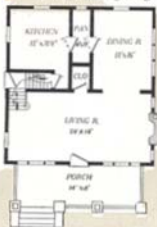
Notice also the detail of the front of the Shadow Lawn. On both first and second stories grouped or triple windows are used in perfect harmony and balance.

Examining further we find a living room of expansive dimensions, twenty-eight feet one way and fourteen feet the other. Matching the size of the living room is a dining room sixteen feet in depth and twelve feet broad; large enough for a real banquet. The kitchen, pantry and grade entrance occupy the other rear half.

The second story illustrates four bedrooms, bath and closets. Each bedroom is on a corner of the house giving free ventilation and an abundance of light.

The Shadow Lawn eaves project four feet, rather a Swiss idea, and are supported by well proportioned brackets. The porte cochere at the left is not included at the price quoted. Should you desire it added to the home it can be furnished ready-cut. See price list on inside of front cover. The Shadow Lawn is surely a home of most striking individuality.

See Terms on page 2 and General Specifications on pages 12 and 13.



First Floor Plan—Shadow Lawn



Second Floor Plan
Shadow Lawn





The Shadow Lawn



The Dresden

See prices on inside of front cover.

SMALL, but expressive of comfort to an infinite degree, the Dresden will appeal to you as being an ideal home. The picture shows a number of features that are not found in the average home. Note the porch—the shelter and relief it provides from the rays of the hot summer sun. And how pleasant and convenient is a porch like that on the Dresden when at the close of the day the sun has disappeared and you wish to sit while enjoying the cool of the evening, and repose in solid comfort. Every inch of the one hundred and twenty feet of floor space on this porch seems to hold a charm for the seeker after comfort. And as much can be said of the inside of the house. Windows on four sides give the utmost ventilation and make all rooms light and airy, cool and pleasant.

The floor plan of the Dresden has been worked out with the same degree of care as the floor plan of our larger homes.

The daylight rooms are arranged on one side of the house and possess every desired feature—plenty of light and air, spaciousness and ease in accessibility; easily adapted to any arrangement or setting of furniture. Plenty of space in the bedrooms with good closets in each, makes a home that will give you great satisfaction and much convenience.

Your friends will agree with your judgment in selecting this home of homes—the Dresden. Turn to page 23 and notice the interesting views of the interior. For price of the Dresden refer to the inside of the front cover. See General Specifications, pages 12 and 13. Terms can be seen on page 2.



Floor Plan—The Dresden





First Floor Plan
The Carolina



Second Floor Plan—The Carolina

The Carolina

See prices on inside of front cover.

HERE is a strong, substantial-looking home that impresses everyone. It has some exceptionally desirable advantages not found in any other design. In the first place, the price we have been able to place on it is truly astonishing for the conveniences included. Four good bedrooms—think of it! One bedroom is downstairs. Every bedroom has a good closet, with an especially large extra closet in the front bedroom. Two grouped windows flood the living room with light and air. Wide arch separates the dining room and living room, giving a 26-foot vista across the house. The massive roof with heavy grouped columns on porch gives a very substantial appearance. This house is certainly a credit to any owner.

The Carolina has never failed to please its owners. One owner claims a saving of \$284.00 in building the Aladdin way. These figures are the result of a comparison on bids received and give an example of the average saving for Aladdin owners.

For price refer to inside of front cover. See Terms on page 2 and General Specifications on pages 12 and 13.



The Venus

See prices on inside of front cover.

“ONE of our customers wrote us saying: “It has been a never-ending pleasure to me to see the effect of my Venus home on the passers-by. It continually attracts attention from people riding and walking by, many of whom stop to take a second look.”

We were greatly pleased to receive this letter because our aim when designing this house was to make it unusually attractive.

The Venus is a type of home that appears equally as well on a narrow lot as one that has plenty of frontage.

A careful study of the exterior shows that many artistic touches have been added to get



First Floor Plan
The Venus No. 2



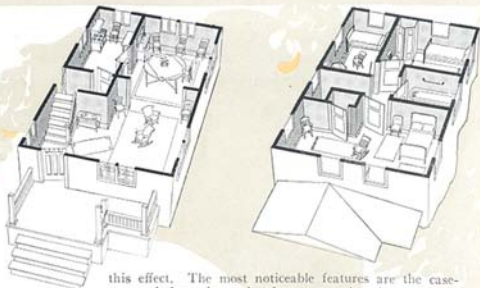
Second Floor Plan
The Venus No. 2



First Floor Plan
The Venus No. 1



Second Floor Plan
The Venus No. 1



this effect. The most noticeable features are the casement windows, heavy brackets supporting the eaves, exposed rafter ends and the bracket hoods over the front bedroom windows. The porch is unique and unusual in shape with a combination gable and drop roof effect.

In the interior a large living room extending across front of house is lighted by five casement windows. Every room has an abundance of light and the arrangement is most convenient. Pairs of windows at end and side of living room offer pleasing possibilities for the effective placing of furniture and window seats. Dining room also has two pair of windows furthering the decorative possibilities of this room. Dining room and living room are divided by cased archway. Light, convenient kitchen has double action door to dining room and door to grade entrance and cellar. Semi-open stairway ascends to upper floor where three bedrooms and bath room surround a central hall. Built-in closet in front bedroom. Aladdin closettes in other two. See page 104 for complete information and description of the Aladdin Closette as furnished regularly for the Venus.

For prices of the Venus refer to inside of front cover. See General Specifications on pages 12 and 13. See Terms on page 2. See Interior Illustrations, page 27.





The Spokane

See prices on inside of front cover.

THERE'S something about the Spokane, one of ALADDIN'S newest designs that seems to radiate warmth and coziness the minute you look at it. Whether it is the simplicity of design, the broad and spacious front piazza, the half siding, half stucco walls, the broad, sloping square roof—something seems assuring of the sunshine and gladness that must reign in this home.

A wide archway opens into the big living room and as you pass through this a huge fireplace, symbolical of beauty and comfort meets your eyes. With three windows in front, a big one flanked by two small ones, and two on the side, the living room has an abundance of light.

Through swinging French doors you pass on into the dining room and here again the designer has provided for plenty of light and sunshine as a glance at the floor plans will show. On your way to the kitchen you pass through a good sized pantry.

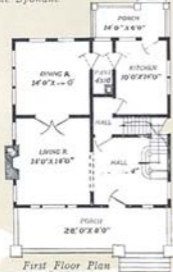
Good sized kitchen, well lighted, the "home workshop" of the Spokane will please the scrutinizing housewife. A rear porch of ample size is directly off the kitchen.

The floor plan of the second story is the equal of the first floor as a study of it will reveal.

Now turn to pages 12 and 13 and read the specifications. For price refer to the inside of front cover and the terms can be seen on page 2.



Second Floor Plan
The Spokane



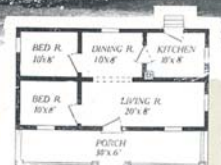
First Floor Plan
The Spokane



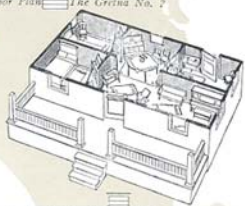
The Gretna

See prices on inside of front cover.

THE Gretna is distinctly a house for the home-loving man of moderate means, because without sacrificing attractiveness, convenience, or essentials, the cost has been brought within the reach of all. It has appealed so strongly to home builders and has met their needs so satisfactorily that you will find Gretnas scattered throughout the length and breadth of the land. Either floor plan shown will be supplied at the same price. For prices of the Gretna refer to inside front cover. See General Specifications on pages 12 and 13 and Terms on page 2.



Floor Plan The Gretna No. 2



Floor Plan The Gretna No. 1





Floor Plan—The Rodney

The Rodney

See prices on inside of front cover.

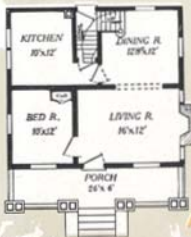
THIS model is very popular with those desiring a small home. Its four cozy rooms are all well arranged and its generous porch serves in a delightful way the outdoor pleasures of summer. A handsome front door with glass in upper part and embellished with moldings would suitably fit a more costly home. The double window in the dining room, with English sash made to swing in appeals strongly to the housewife. Upper sash are divided into small lights.

You have your choice of two sizes in the Rodney. No. 1 is 20x22 feet over all and has four 10x8 foot rooms. Price given on inside of front cover. No. 2 is 24x26 feet and has four 10x12 foot rooms. In both designs a wide arch separates the living room from the dining room. You will be delighted should you decide to own this cottage.

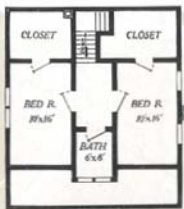
Of course, you receive our famous Dollar-A-Knot siding. Two men can erect this house in four days. Most owners of the Rodney did all the work themselves, easily.

For prices on the Rodney refer to inside of front cover. See Terms on page 2 and General Specifications on pages 12 and 13.





First Floor Plan—The Detroit



Second Floor

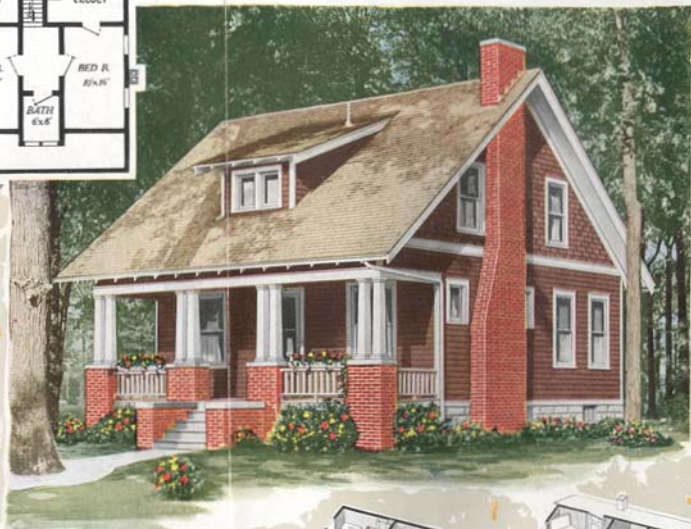
The Detroit

See prices on inside of front cover.

AN enthusiastic owner of this attractive semi-bungalow wrote saying: "The more I see the Detroit and the longer we live in it, the greater becomes our love for it. After a year, we cannot suggest how your architects could make it more attractive or your designers improve the arrangement. This I believe is exceptional, because usually after giving a house that most sure test of actually living in it, you have some improvement or changes you would make. We have none."

You will agree that actually living in a house is the best test. We believe that the longer you study the design and arrangement of the Detroit, the more fully you will realize why this owner has no improvements to suggest. Without being gaudy it is attractive, without being elaborate it is simple. No attempt has been made to embellish, yet you could not add anything without really destroying—in short the Detroit seems to stand complete—with nothing to add or leave off.

In interior arrangement the Detroit is equally pleasing. (See interior illustration on page 93.) The pleasant living room has opening off from it at the left, the downstairs sleeping room for those who wish, or the den or library for those that desire only sleeping rooms on the second floor. For price refer to inside of front cover. See General Specifications pages 12 and 13. Terms on page 2.





The Sunshine

See prices on inside of front cover.

THIS charming bungalow nesting in this setting of trees represents one of the best pieces of work of our master designers. Individuality is portrayed in all its lines and it is distinctly American in character. Extreme simplicity is the motif behind the planning of this home. Simplicity implies character, quality and taste. Sunshine implies cheerfulness, happiness, prosperity and light. Could a more fitting name than "Sunshine" be given to this home? It radiates that sweet, simple home atmosphere everyone wishes to secure in their home and to see it in the homes of others. The roof lines are particularly graceful, the main roof extending down over the porch, it being evenly balanced by a dormer of just the right proportions. A study of the interior reveals an abundance of it for every room. The large living room gives access to the dining room and front bedroom, as well as small clothes closet. The opening between the living room and dining room is a prepossessing cased archway. The fireplace and outside chimney are shown in the photograph and floor plan, although it is not necessary that you build these should you favor this house. The two back bedrooms have regular closets built off of them. At the rear of the bungalow one of our regular Addition No. 4 is furnished, this providing for a combined cellar and rear entrance. If the "Sunshine"

appeals to you, write us so we can send you still further details. Refer to inside of front cover for prices. See Terms on page 2. Specifications on pages 12 and 13.



Floor Plan
The Sunshine





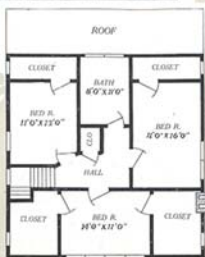
The Brunswick

See prices on inside of front cover.

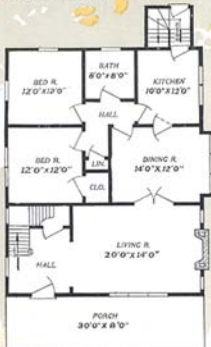
ONE of our newest designs—THE BRUNSWICK—is aptly described in two words "Beautiful lines." Conceived in the mind of one of the master builders and designers of ALADDIN houses it now comes forth as a worthy upholder of the many traditions that fifteen years of faultless construction have placed on ALADDIN houses before it. And this is not easy for news of the growth and phenomenal success of ALADDIN houses has spread to the four corners of the globe and there is hardly a hamlet or city in the country among the homes of which an ALADDIN cannot be found. So as the years go on ALADDIN is establishing traditions and a prestige that *must* be upheld, no matter what the effort.

And in offering the Brunswick it is felt that this is being done. A glance at the exterior and the eye not only rests on a house of extraordinary beauty but a broad substantial structure that has all the earmarks of a cozy, comfortable Home. Everything is compact, no space is wasted, and there is no room for improvement anywhere.

For prices refer to inside of front cover. See Terms on page 2 and General Specifications on pages 12 and 13.



Second Floor Plan—The Brunswick.



First Floor Plan—The Brunswick.



The See prices on inside front cover.

Charleston

THERE are many good points in the Charleston, a modern square-type design. The first noticeable feature is the deep bay windows in front, both stories, also on one side. These give free sight in all directions and ample light.

The interior arrangement is one for convenience. Front entrance is gained through a large reception hall with semi-open stairway and arched entrance to large living room. This feature has proven popular, as it can be used for one room and still retain the convenience of two.

The kitchen has proved extremely attractive to busy housewives. A rear entrance leads to the back porch, while the grade entrance at the side leads to the out doors and basement, saving many steps.

Four large bedrooms and bath are arranged on the second floor—plenty of light in all. All



exterior walls of siding. Beautiful Colonial columns support porch roof and a three-quarter length glass door adds greatly to the appearance. The Charleston is a good, substantial, roomy home.

There are a number of attractive arrangements for the Charleston interior. The room arrangement and sizes of each adapt themselves to comfortable furniture settings.

Of particular note are the attractive bay windows. These add much to the four rooms, living room and dining room on the first floor and two bedrooms on the second floor.

Cozy corners for the placing of easy chairs, cushions and pillows suggest themselves and these features are popular with home-loving folks everywhere.

The Aladdin Department of Service has a number of interesting suggestions on interior decorations, etc., for the Charleston. Also a number of practical color schemes for the exterior. Send for this information today—it is free. It will enable you to plan your new home in detail.

Owners of the Aladdin Charleston home claim to save between \$300 and \$400 by building the Aladdin way.

This is due to the Aladdin Read-cut system. All the material is cut to fit in the mills and reaches you ready to be nailed in place. In this way you pay for no waste of lumber or labor—you pay for the material that is used and no more.

From careful investigation it is estimated that the average waste of good lumber when building the old-fashioned way is between 18% and 25%. Do you care to pay big prices for lumber that is wasted?

For price of the Charleston refer to inside of front cover. See Terms on page 2 and General Specifications on pages 12 and 13.



Second Floor Plan
The Charleston



First Floor Plan
The Charleston



A Corner of the Sheridan
Dining Room



A Corner of the Sheridan Living Room



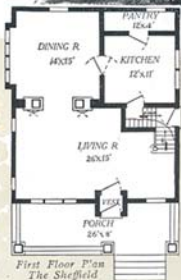
The Sheffield

See prices on inside of front cover.

Do not the roof and porch lines of the Sheffield please you? The heavy overhang and the Japanese roof effect give an individuality to this attractive home that invariably pleases its owner. Notice the heavy porch columns and exposed scroll rafters. How well these carry out the general architectural lines.

Ascending to the porch by the wide front steps, one is surprised with the size of the porch, 26x8. What a fine place to spend an evening watching the sun slowly sink into the west and darkness creepingly spread its mantilla over the land. Also an ideal spot for a tea or sewing party or any other afternoon entertainment. The porch is but one of the many details of the Sheffield that together give the designers definition of the word "comfort."

An attractive front door and a French door lead into and through the vestibule to the living room. This vestibule is a handy place to leave wraps at any time of the year, particularly during the winter months. Note the size of the living room, 26 x 15 feet. Surely there is plenty of room therein to give the housewife a place to find expression for her ideas as to the proper furnishing and arrangement of the living room. This is one of the



First Floor Plan
The Sheffield



Second Floor Plan—The Sheffield



most important rooms of the house, a room in which much time is spent, and therefore should be arranged as attractively as possible. If you have any doubts as to your ability to do this the ALADDIN Department of Service is always ready with a timely suggestion.

A wide archway leads to the well lighted dining room. And what adds more cheerfulness to a meal than to have the lovely rays of sunshine broken by some sort of an attractive curtain do the dance of the sunbeams throughout the room. ALADDIN Homes are all well lighted and the Sheffield can be no exception.

A kitchen with pantry and stairs leading to the basement and grade entrance complete the first floor. And what a kitchen. This is the one room of the whole house in which the housewife is particularly interested and in the kitchen of the Sheffield she will find much room for admiration. First, it is good sized, 12 x 11, thus there being plenty of room. Then it is well lighted by two windows. The pantry is just off the kitchen and is very conveniently placed.

From the living room an easily ascended semi-open staircase leads to a central hall on the second floor. Opening off the hallway are three bedrooms and a bath. Each of these bedrooms are lighted by two or more windows and plenty of air and sunshine is assured. They are all of good size and attached to each one is a most handy closet.

While this picture of the Sheffield shows the side walls with the double shingle effect, yet when desired, siding without extra cost will be substituted for the shingles. The interior of the Sheffield is beautifully finished in Oregon Fir. Oregon Fir is hard enough to take a hardwood polish, yet soft enough to work easily. You will find it the equal of the best finished homes in your neighborhood.

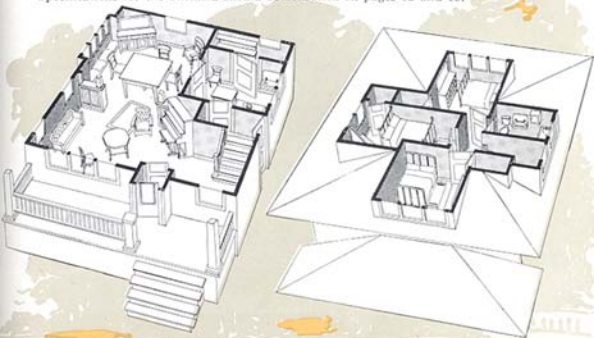
In our recent mail there came a letter from a man who had but a short time before purchased a Sheffield. He was greatly pleased with it. Here's what he has to say:

"My experience with my Sheffield house is all that could be wished. The material you sent for the house was of the best, as everybody who saw it remarked, and the supply was adequate. I had more top shingles and top flooring than was needed, and the house as it now stands, almost completed, is the talk of the town. It is most pleasing in appearance and is nicely arranged and very roomy. The overhanging roof serves as an awning, excluding the torrid glare of the sun at noonday, and still reflecting sufficient light from the white paint under the overhang.

"Again thanking you for your courtesy, I am, sincerely yours,

"M. F. UMSTEAD, of Pennsylvania."

For a substantial, convenient, attractive home, the Sheffield is one of the best. Refer to the inside of the front cover for price and see the terms on page 2. General Specifications for the Sheffield should be consulted on pages 12 and 13.





Floor Plan
The Chester

The Chester

See prices on inside of front cover.

BROWN shingles trimmed with white distinguish this little home from the ordinary looking cottages found in most communities. The Chester is a trim, neat, compact and pretty bungalow. Its five rooms are nicely arranged, its porch roomy and every room is well lighted. Note the spacious, airy living room that stretches the full width of the house and gives a view in both directions as well as in front. Arch separates dining room from living room, while two bedrooms and kitchen complete the home. You are privileged to choose any colors of paint and stain for shingles and trimming for the exterior, and you can have the most modern ideas worked out in your interior decorations with the wide variety of stains, varnishes and paints illustrated on our color cards. Many owners of the Chester write us about the pleasure they derived from erecting and completing it themselves. You can do this easily. With every Aladdin House we send complete instructions and illustrations for erecting. These instructions are so carefully written that anyone not a carpenter could easily understand them. It tells you how to start the work, kinds of material to use and in most cases gives illustrations of different stages of the erection. For Prices see inside front cover. See Terms on page 2 and General Specifications on pages 12 and 13.





Living Room - The Georgia No. 2



*Dining Room
The Georgia*



Dining Room - The Kentucky



Living Room - The Kentucky



See prices on inside of front cover.

CAN you imagine a better utilization of space than is obtained in the plan of the Hudson? The constant thought of Aladdin designers is toward giving a maximum of convenience and comfort for the lowest possible cost. It is doubtful if this result has been exceeded by any other Aladdin house. The exterior will please you, we are sure, as this home has a great number of admirers. The design is practical and conservative with no sign of over-trimming being evident. Simple lines in the porch construction, heavy overhead boxing, and roof are in perfect harmony with the balance of the home. The windows of both first and second story are treated differently from the average. On the first floor the windows are capped by the wide belt dividing first and second floor. The windows on the second floor line up to the trim board under eaves.

The wide belt dividing first and second stories adds much to the general appearance of the Hudson.

Notice the hip roof dormer on the front roof. It helps break up the flat, plain roof. Study the location of rooms and the placing of doors and windows. Hudsons have been erected in many cities and towns about the country and you may be sure that each creates much favorable comment by friends and neighbors of the owners. The arches dividing hall, living room and dining room give an impression of size and space that is most desirable. The reception hall permits direct access to kitchen, living room, or second floor. Ample light for hallway and staircase is provided by full size window and three-quarter length glass in front door.

By referring to the plan you will find there is a stretch of space twenty-eight feet thru living room and dining room. The large living room, size 14x16 feet will prove interesting to you with the many possibilities for attractive furniture arrangements.

Entrance from hall to kitchen saves the housewife many steps. Four good bedrooms, closets and bath are arranged on the second



Living Room - The Yale



Dining Room - The Yale



The Hudson

floor. The woodwork and floors are of beautiful grained lumber, which is subject to any treatment you like. To lovers of simplicity in home architecture the Hudson always appeals strongly.

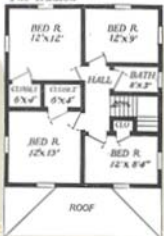
The builder of the Hudson need have no fears as to the quality of the material in his home. The famous "Dollar-A-Knot" siding is used in the Hudson. The doors and interior finish are of clear Oregon Fir that is a real hard wood yet softer than either oak or birch. It will readily take any hardwood polish and it is soft enough to work easily. We cannot praise the quality of our interior finish too highly.

We have many interesting letters from Hudson owners telling of their experiences, cost of erection, and length of time in building. We will be glad to send you copies of these letters or will send you names and addresses of owners nearest you. In this way you can write and learn at first hand of their complete satisfaction.

For prices refer to inside of front cover. See Terms on page 2. See Specifications on pages 12 and 13.



First Floor Plan
The Hudson



Second Floor Plan—The Hudson



The Edison See prices on inside of front cover.

THE Edison is one of the prettiest bungalows ever built. Every owner is more pleased with his or her Edison after it is completed. When the beautiful lines of this home are fully realized—when it is possible to see the expansive roof sweeping across the entire front of the house, and the careful formation of the roof covering the porch—then can the owner of the Edison fully realize what a treasure of a home he or she really has.

Notice the broad eaves with exposed rafters. This feature seems peculiarly suited to this home. The divided lights in the upper sash are in complete harmony with the balance of this beautiful home. Study the interior, the arrangement of rooms. Isn't it ideal? The living room and dining room divided by an archway are really one big room, but still they retain the convenience of two. Each sleeping room affords plenty of air and light and physicians ascribe many of the present day ills to lack of these two life-giving remedies of nature. The bathroom is well planned and is large enough for bathroom fixtures with space to spare.

For design, convenience, and price, don't you think the Edison is the prettiest little bungalow you have ever seen? And when it is stained a dark brown and trimmed in pure white you have a most artistic and beautiful result.

For price of the Edison refer to the inside of front cover. See Terms on page 2, and General Specifications on pages 12 and 13.



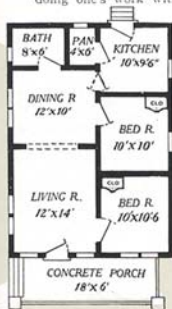
Floor Plan—The Edison



The Raymond

See prices on inside of front cover.

FOR compactness, convenience and modern designing, the Raymond is among the leaders. When entering the front through the attractively designed bungalow door, one is at once impressed with the roominess of this apparently small house. This long stretch of nearly 25 ft. is secured because of the wide arch separating the living and dining rooms. In this, as in all Aladdin houses, the designer has kept prominently in mind the thought of modern arrangements, which in Aladdins is only another way of saying, "doing one's work with the least possible effort."



These "step-saving arrangements" are the things that help to make "doing one's own work" a real pleasure. What housewife would not be delighted with the plan of the Raymond? Of course, the exposed rafters, casement windows and porch all contribute their part to make this little bungalow complete, attractive and modern. If desired, siding can be substituted for wall shingles without extra cost.

For Price of the Raymond refer to inside of front cover. See Terms on page 2 and General Specifications on pages 12 and 13.

Floor Plan—The Raymond



First Floor
The Rochester

The Rochester

See prices on inside of front cover.

THIS is an interesting square house. In design the Rochester is truly American—simple, strong and substantial. Conservative lines bespeak dignity and personality of which this design is a good representative. Its features are not composed of novelties that come and go, but are made up of the careful touches that have stood the test with home builders for many years. The Rochester has the added advantage in point of design of being square in shape, which always expresses massiveness and strength. While the exterior is simple in design, yet it is not commonplace nor uninviting. The scrolled rafter ends studding the eaves of the house, dormer and porch roofs, add an artistic touch without giving it an overburdening of trimmings. Still another distinction noted in the Rochester is the window arrangement. Grouped in pairs in most cases they add strength to the design of the exterior and provide an abundance of light to all rooms. In planning a home, the housewife, besides giving deep thought to the exterior appearance, takes a greater interest still in



Second Floor—The Rochester



the interior arrangement. Housewives in general have placed their stamp of approval on the interior of the Rochester. The arrangement is ideal—convenient and comfortable, minimizing housework. Note the vestibule, large living room with cozy bedroom having projecting bay window, group window in dining room, large pantry attached to kitchen, and rear exit grade cellar entrance.

Covering a period of six years' time since it was first included in the Aladdin Book, its popularity has been widespread. It was first erected in northern Minnesota in the spring of 1911. The owner of this Rochester is very high in his praise of the warmth of Aladdin construction and the handsome appearance of this design. Since that time, the Rochester has been erected many times in nearly every state in the Union. One state now has nineteen Rochester homes.

For Prices of the Rochester, refer to inside front cover. See Terms on page 2 and General Specifications on pages 12 and 13.



Living Room and Dining Room—The Detroit



The Oakley

See prices on inside of front cover.

LIKE all ALADDIN homes the Oakley was designed by a master builder who for years has made a close study of artistic arrangement and every detail, even the minutest, has been worked out to a perfection. Where is the local architect or designer who with his limited experience and ideas can be expected to evolve the perfected results found in an ALADDIN?

Nor does ALADDIN stand alone on its strength of design. Its vast buying power and its saving of material by the "cut to fit" method are participated in by every buyer of an ALADDIN home and to the man or woman who is desirous of making each dollar give exactly one hundred cents worth of value in return this **MUST** mean something. In the saving on material alone by ALADDIN'S "cut to fit" method, an economist has figured that \$18 of every \$100 is saved and this is no small item, to be cast lightly aside.

The Oakley, being an ALADDIN embodies all the above and thus its real value is enhanced. By those who are contemplating a home of five or six rooms the Oakley must be given serious consideration.

The illustration on this page shows better than a pen picture the beauties of this little home and a study of the **GENERAL SPECIFICATIONS** on pages 12 and 13 would not be a waste of time. For price refer to inside of front cover and the Terms can be seen on page 2.



Floor Plan
The Oakley





The Jordan

See prices on inside of front cover.

STURDY and staunch is the JORDAN and safe and secure is its owner.

Distinct in its every detail it gives the general effect of exclusiveness and beauty that is so hard to get. The long sloping roof broken by the three dormer windows which give natural light and plenty of fresh air to the front bedroom of the second floor is a thing of great and noticeable beauty.

The full front porch, ornamental roof of which is supported by two massive columns which lend their strength and beauty to the general effect, is surrounded by a half rail.

Three large windows break the otherwise plain effect of the front of the house and in addition add light and cheerfulness to the large living room within.

For the price of the Jordan refer to inside of front cover. Study General Specifications on pages 12 and 13. Complete detail specifications will be sent you upon request. See terms page 2.



Second Floor Plan
The Jordan



First Floor Plan
The Jordan



The Erie

See prices on inside of front cover.

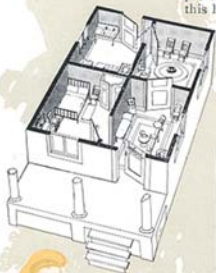


Floor Plan
The Erie

THE ERIE! Isn't it a little jewel? Here is a real bargain. Here is a home that will be a great credit to you, to your building spot, to any location. How can we manufacture and sell this ideal home at this price? Here's the reason. Stop and think that your order is received today and enters the mill. Tomorrow it is rolled out of the mill yards and is on its way to you. Probably the same train has three or four more orders going in the same direction. Your house is but one of the many that leave the Aladdin mills each day, because Aladdin sells at wholesale prices and saves you unnecessary profits.

This little home of three rooms and attractive porch is a beauty. It is warm and strong—is built of the same high grade material as the larger Aladdin houses. Two men with no previous experience, following Aladdin's instructions, can erect this house in four days' time. You will take great pride in this Aladdin home—the Erie. The Erie and Selwyn can be furnished in size 20x24 feet instead of 16x20 feet as shown in these plans. See price list on inside of front cover.

For prices refer to inside of front cover. See Terms on page 2 and General Specifications on pages 12 and 13.



Floor Plan
The Selwyn

The Selwyn

The Selwyn is the same as the Erie, except it has four rooms instead of three. For prices refer to inside of front cover. See Terms on page 2 and General Specifications on pages 12 and 13.



The Winston

See prices on inside of front cover.

CONSERVATIVE, yet not lacking in exterior beauty the Winston is a new ALADDIN Home of a type that will appeal to a large number of home-builders.

Its straight lines which might lead to a bare plainness are broken by the extending eaves, exposed rafters and ornamental brackets.

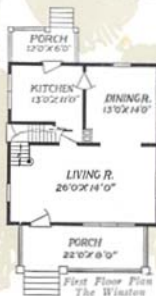
Starting with the broad front porch the idea of comfort and compactness is maintained throughout. Every room is well lighted, the large living room alone containing five windows. Wherever there is plenty of sunshine there can be no ill and the builder of the Winston can feel that he is throwing as many safeguards about himself and family as possible.

Of course, the Winston has the stamp of having been designed by one of ALADDIN'S master designers and from this a builder can thus be assured that every detail in plan and arrangement has been worked out to a perfection.

When you are building a home you are erecting a monument to your integrity and thus it should be given plenty of consideration. More and fuller details of the Winston can be had for the asking. The General Specifications are on pages 12 and 13 and the price is listed on the inside of the front cover. The terms of sale are shown on page 2.



Second Floor Plan—The Winston



First Floor Plan
The Winston

The Willamette

See prices on inside of front cover.

AND in the Willamette, one of the newest ALADDIN designs, a very good definition of the word "individuality" can be found. Look at the illustrations on the opposite page, picturing a Willamette that stands in ALADDIN Town, and then stop and think if there is another house in your city or town that is like it.

We think not, for the Willamette is a new design and created with the idea of giving to those who ask for something a little "different," just that.

Thoroughly American in architecture, it is a home anyone can well be proud to identify as "My Home." The two dormer windows in the square roof, the front porch with its half rail and ornamental roof supports, the cave extending out over the front of the first story, the windows with the upper sash of divided lights—everywhere, everything points toward the individual.

Study the floor plan. Roomy yet harmonious in detail, the interior of the Willamette has been exceptionally well planned.

The living room, which is the most used room of any home is large and well lighted and a big fireplace throws an artistic light over the room as well as adding much to the comfort of it. When it isn't cold enough to light the furnace there's always the fireplace to chase away the gloom and early winter and late spring chills. For want of space the complete description cannot be given. Look the Willamette over however and see if it doesn't come pretty near to being just what you've thought of in the way of a complete and handsome home.

Then write to us for more specific details.

Better see the General Specifications on pages 12 and 13 and the price which is listed on the inside of the front cover.

Terms on page 2.



First Floor Plan
The Willamette



Second Floor Plan
The Willamette





The Pomeroy

See prices on inside of front cover.

A BUNGALOW of distinction is the Pomeroy. Of a pure bungalow type of architecture there is an individual something about this home that is at once attractive.

The wide front porch, with its four massive pedestals supporting the porch roof and lending an air of massiveness, is one of the features of the Pomeroy. The dormer window relieving the bareness of the front roof adds to the general attractiveness.

Like all ALADDIN Homes the interior of the Pomeroy has been carefully planned by designers of many years experience. Every foot of space is utilized to good advantage.

Though small in appearance there is really a great deal more room in this charming little bungalow than one would think. A good sized living room, a dining room, a kitchen, a pantry, two bedrooms and a bathroom, all with the exception of the pantry leading off a central hallway, are to be found under the roof of the Pomeroy.

The general arrangement of the interior of this home has been with the one idea—of eliminating as many steps as possible. Plenty of windows have been provided for and every room is bound to contain plenty of light and air.

The price of the Pomeroy is given on the inside of the front cover and the General Specifications are on pages 12 and 13. Turn to page 2 for terms.



Floor Plan—The Pomeroy





The Tacoma

See prices on inside of front cover.

ONE of ALADDIN'S newest designs, the Tacoma, has already appealed to many of the homebuilders of the country. Square, significant of massiveness and strength, it is a type of house that at once appeals to the searcher after a REAL home.

On the interior, too, there is a personification of beauty and comfort. The large living room which leads off the reception hall by way of a handsome archway contains a cheery fireplace and radiates an atmosphere of continuous sunshine.

The second floor contains three well lighted and airy bedrooms, a sewing room which can be made to serve many purposes, a bath, and closets for every room. The General Specifications can be seen on pages 12 and 13 and the price on the inside of the front cover. For terms turn to page 2.



Second Floor Plan—The Tacoma



First Floor Plan
The Tacoma

National Homebuilding Service



Greatest Distributing System of Lumber in the World

THE four points of the compass, North, South, East and West are the guiding points to ALADDIN mills. In four sections of the country the familiar hum of the buzz-saw that has become famous for its waste-eliminating proclivities can be heard as it eats its way into the products of these great timber lands. In the west, Portland, Oregon, which is on the Pacific ocean, in the south, Hattiesburg, Mississippi, which is on the Gulf of Mexico; in the east, Wilmington, North Carolina, on the Atlantic ocean and in the north, Bay City, Michigan, on the Great Lakes are the offices and mills of THE ALADDIN COMPANY.

These four great manufacturing establishments, located in the four great timber regions of the United States form the greatest Home-building Service in the World. From these four points the vast growth of timber, and giant trees are cut down and hewed into homes for the people of the nation. Each division is a complete unit of The Aladdin Co. Builders in each territory are enabled to transact business more rapidly, secure prompt shipment of material and in many cases visit the division offices before purchasing.

This great organization which has spread its influence and power over the entire country is divided into four divisions as follows:

Northern Division

The home offices and mills of THE ALADDIN COMPANY are at Bay City, Michigan. Established a number of years ago, the mills of the Northern Division have a capacity that will serve this territory promptly and efficiently.

Located on the Great Lakes, the mills at Bay City are provided with excellent shipping facilities by water and also by land. Five railroads have tracks leading to THE ALADDIN COMPANY'S loading platforms at these mills, thus making shipping conditions ideal.

The Northern Division is comprised of the following states: Maine, New Hampshire, Vermont, Massachusetts, Rhode Island, Connecticut, New Jersey, New York, Pennsylvania, Michigan, Indiana, Ohio, Illinois, North Dakota, South Dakota, Minnesota, Iowa, Wisconsin, Nebraska, Colorado, Kansas, Missouri, Kentucky and West Virginia.

Southeastern Division

At Wilmington, North Carolina, on the coast of the Atlantic Ocean, are located the general offices and mills of the Southern Division, comprising the states of North Carolina, South Carolina, Georgia, Florida, Virginia, Maryland, and Delaware.

A thriving sea coast city of thirty-five thousand people, Wilmington is practically from a geographical standpoint the center or hub of the southeastern division. From Wilmington prompt and efficient service will be given to all ALADDIN customers of the southeastern division with nearly

all shipping points of the division less than eighteen hours distant from the offices and mill.

South Central Division

The General Offices and mills of the South Central Division of the Aladdin Co. are at Hattiesburg, Mississippi.

From these mills every point in the south central division comprising the states of Alabama, Mississippi, Louisiana, Arkansas, Tennessee, Oklahoma, Texas and New Mexico lies in a straight line making shipping facilities unexcelled.

With an abundant supply of standing timber in easy access and with shipping facilities par excellence, the home builders of the south central division are securing the best possible service.

Western Division

The offices and mills of the Aladdin Co., Western Division, are located in Portland, Oregon.

These offices and mills save western builders of Aladdin homes considerable in the way of freight alone. They eliminate days of time, thousands of miles of hauling and consequently a great deal in freight charges. Fully 80 per cent of the correspondence from our customers of the west will reach us within twenty-four hours after it is sent on its way.

The Western Division includes the following states: Washington, Oregon, California, Idaho, Nevada, Utah, Arizona, Wyoming and Montana. Residents of these states should send inquiries or other correspondence directly to THE ALADDIN COMPANY, Portland, Oregon.

Aladdin Colonnades and Arches

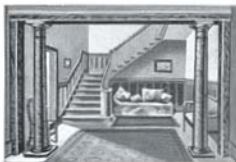


Bookcase Arch No. 24-1

Arch No. 24-20—The simplicity of the design of the Colonnade coupled with the extremely low price makes it a very popular one. Made of Yellow Pine, Oregon Fir or Oak, by skilled workmen. The price quoted does not include jambs or trim.

See price on inside of front cover.

For Jambs and Trim of Yellow Pine or Oak, see prices on inside of front cover.



Arch No. 24-61—

These fixtures sold only in connection with Aladdin Homes.

This "Housecraft" Bookcase Arch has been used in thousands of homes and in every case has given perfect satisfaction. The cases are 25½ ft. wide, the columns 8 in. square. Made of Yellow Pine, Oregon Fir or Selected Oak, sent out unfinished, but complete with hardware and glass doors, as shown.

See price on inside of front cover.

If you desire only one side of the bookcase it can be furnished at the prices quoted on inside of front cover. Mention side you desire—right or left of illustrations shown here.

Side and head jambs and side and head casings are charged for extra.



Arch No. 24-60

Arch No. 24-61—A plain column Colonnade. For smaller homes or one where extreme simplicity is desired. We furnish these made of Yellow Pine, Oregon Fir or Oak. Shipped in the white, that is, unfinished.

For Jambs and Trim of Yellow Pine or Oak, see prices on inside of front cover.

Aladdin Closette

Here is a practical plan for a clothes closet that utilizes just 4½ square feet of floor space and yet gives more hanging space and storage space than the usual four by six foot closet that occupies 24 square feet of floor space!

By the use of coat hooks, costing about 5 cents a dozen at notion stores, it is easily possible to hang twelve suits or robes in this space, each one being easily found and removed. Can greater capacity be gained in the average good size closet? Above the compartment is space for hats, etc., and below a wide, deep space for shoes and the many other articles that may require a place out of the way.

The cabinet is six feet high and, in many instances, it can be inset into the bedroom wall, so that it utilizes the six inches of wall thickness and really takes up but one foot of bedroom floor space!



Aladdin Built-in Buffets

*These fixtures sold only in connection
with Aladdin Homes*

Aladdin Homecraft Buffets

are designed with the object of giving the most convenience combined with the most artistic effects. They are made either of clear yellow pine or oak, and are sent out by us in the white, that is, unfinished. We furnish all hardware as shown.

Size, 6 ft. 6 in. wide by 5 ft. 6 in. high; depth, 18 in. This cabinet has three large and four small drawers and two doors, 3 strong shelves in each side section. Best quality bevel plate glass mirror above shelf.

For prices see inside of front cover.

This case when finished to conform with the other woodwork in a home will harmonize with nearly any style of furniture. Price, F. O. B. shipping point; weight, 375 lbs.



*Homecraft
Buffet No. 2A-20*

Homecraft Built-in Buffet

A "Homecraft" Buffet which is just what the name indicates. The result of a Craftsman's labor. It stands 7 ft. high and is 5 ft. wide; depth, top section, 14 in.; bottom section, 18 in. Has four large linen drawers in center of base section and two smaller drawers on the sides, suitable for silverware, etc. One large and two small bevel plate mirrors in each buffet. Weight, 300 lbs.

For prices refer to inside of front cover.

If side casing, base blocks and cap trim, as shown, are wanted, of Yellow Pine, or Oak, see prices on inside of front cover.



*Homecraft
Buffet No. 2A-30*



Homecraft Buffet No. 2A-21

Homecraft Built-in Buffet

A well proportioned "Homecraft" built-in side board or buffet has been very popular wherever offered. It is 4 ft. 6 in. wide and 7 ft. high, 14 in. deep. Has a bevel plate mirror back in opening over drawer section, four drawers and one closet space in bottom section.

For prices in both yellow pine and oak, see inside of front cover.

If side casing, base blocks and cap trim, as shown are wanted, in Yellow Pine or Oak, see prices on inside of front cover.



Aladdin Built-in Mantle Book Cases

Fixtures on this page sold only in connection with Aladdin Homes

The space next the fireplace has long been devoted to use as a convenient nook for the book shelves. Aladdin designers have struck a happy combination in the cases illustrated here. It is planned to be adaptable to a twelve or fourteen foot room as priced, by the widening or narrowing of the trim boards at sides. Note that the top of book case continues across the top of fireplace, incorporating the mantel shelf. For prices refer to inside of front cover.



ALADDIN Bathroom Cabinet and Medicine Chest

A splendid combination for installation in your bathroom. Gives generous drawer space for linens, towels, bedding and the many bathroom accessories. Comes in combination with medicine chest and mirror door. The cabinet is 4 feet from floor to top, 12 inches deep and 26 inches wide. A cupboard, two narrow drawers and four wide drawers complete the cabinet, while the medicine chest at the top has strong, plain mirror door and shelves inside. The whole combination is strongly built, neatly finished and easily installed.



ALADDIN Medicine Chest

A very convenient addition to any bathroom. Made to be placed in a recess in the wall, the face to come flush with the plaster. Size of recess required in wall is 20 inches wide, 26 inches high, 4 1/2 inches deep. Has three adjustable wood shelves.

ALADDIN Kitchen Cabinets

The articles illustrated on this page are sold only with Aladdin Homes.

The "Aladdin Homecraft Kitchen Cabinet" represents a real service to the Aladdin home owner. It is not sold promiscuously but can only be purchased by buyers of Aladdin homes.

Oregon fir material is used in this cabinet on account of its beautiful natural grain and excellent finishing qualities. The "Homecraft Kitchen Cabinet" shown here is 5 ft. wide and 7 ft. high. The top section which is 12 inches deep contains three shelves enclosed with paneled doors. Lower section contains flour bin, two drawers and an extra large compartment enclosed with double panel doors. Lower section is 18 inches deep.

The "Aladdin Homecraft Cabinet" is shipped knock down ready to put together. All hardware, etc., is included in shipment. The "Aladdin Homecraft Kitchen Cabinet's" size is 5 ft. wide by 7 ft. high. For price see inside of front cover.

*Aladdin
Homecraft
Kitchen Cabinet*

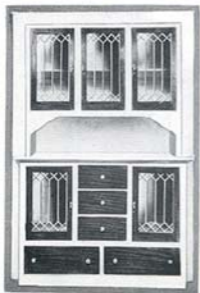


*Aladdin Junior
Kitchen Cabinet*

The "Aladdin Junior Kitchen Cabinet" as shown in the opposite illustration is an efficient and practical cabinet that will prove very attractive to the housewife. In appearance it is attractive, well designed, and modern. It is finished in Oregon fir which is a beautiful natural grain and finishes very attractively. It will take either an oiled or stained finish or can be finished in white enamel. Top section has three shelves and is enclosed by two panel doors. Lower section has a flour bin, one drawer and an extra compartment with panel door. Size of the "Aladdin Junior" is 3½ ft. wide and 7 ft. high. Bottom section 18 inches deep, top section 12 inches deep. Shipped knock down, complete ready to assemble. All hardware included. For price see inside of front cover.

Aladdin Buffet

The Aladdin Craftsman Buffet is an original Aladdin design that has proven very popular with our home builders. In design it is possibly the most pleasing and serviceable of any offered to the home builder. Roomy and well arranged, it has four sets of shelves with a divided light glass door for each section. The lower section consists of five drawers for linen and silver. The two drawers at the bottom will please the housewife. Being especially large they provide an excellent space for tablecloths and other large pieces. The illustration here shows the Aladdin Buffet finished in Mahogany and trimmed in White Enamel. It takes an enamel finish as readily as it does the stain finish. For prices see inside of front cover.



ADDITIONS TO ALADDIN HOUSES

See prices on inside of front cover.

Designed and sold for use on Aladdin Homes Only

THE additions shown on this page were designed to meet the demands which we have had in the past for additions to dwelling houses. Several different designs are shown so the purchaser may select one that will be best adapted to his requirements.

The exterior finish of these additions will be furnished to harmonize with the appearance of your house without extra cost. The prices are quoted with and without lath and plaster and interior finish of the enclosed part.



Addition A



*Floor Plan
Addition A*

Addition A

Addition A can be used as a kitchen with pantry, or as an extra bedroom, as desired, or will be very well adapted for an entryway, with either pantry or bath.

For prices of the additions on this page refer to inside of front cover.

Addition B

Addition B has an enclosed part, which is suitable for a pantry or bath, and has an open porch.

For prices of the additions on this page refer to inside of front cover.



Addition B



*Floor
Plan
Addition B*

Addition C

Addition C is a simple, enclosed, rear entrance with cellar stairs. It can, of course, be attached to any Aladdin House as all material necessary to complete the addition is included. Paints for two coats of any color to match balance of the house as well as nails, hardware, etc., are furnished at the price quoted. See floor plan herewith. For price see inside of front cover.

Addition D

To meet the popular demand for sleeping porches and sun rooms, arranged for screening in summer and sash in winter, we are offering in Additions D and E two very convenient and practical designs which have found especial favor with our customers.

The Addition D is furnished in size 10x6 ft., two stories high. This size is excellently adapted for average usage. The upper porch is large enough for a double bed, or two single beds, or three cots.

The popularity of the sleeping porch needs no comment here. This makes a splendid addition to any home. Screens are furnished for all openings and screen door.

The price includes paints for two coats outside, oils, stains, and varnishes for inside finish.

Any colors of paints can be furnished for outside body and trim to correspond with balance of house.

Addition E

Addition E is furnished in size 14x7 ft. The sleeping porch will accommodate two double beds, nicely, while below you have, in addition to the open porch, an enclosed part, size 8x7 ft., which can be used for a pantry, bath, store, or fuel room, door to open into the enclosed part, either from porch or kitchen.

The price quoted includes inside walls finished with matched material. Price also includes paints for two coats outside and oils and stains for inside finish.

Any colors of paints can be furnished to correspond with balance of house.

Prices on glazed sash for sleeping room to be used in winter will be furnished upon application.



Addition C



*Floor Plan
Addition C*



Addition D



Addition E



POPULAR ALADDIN GARAGES

ALADDIN Garages are staunchly built of the same splendid grades of material entering into the construction of our dwellings. Quick shipment, simply and easily erected, paints of colors to match your house included. A special feature is made of quick shipment. Standard material is always carried in stock so that your garage is loaded very quickly.

The BUICK Garage

See prices on inside of front cover.

ALADDIN Garages have led the market for ten years. Staunch construction, high grade material and rock bottom prices have made an irresistible appeal upon automobile owners throughout the land. The Buick, illustrated on this page, is made in two standard sizes, the 8x14 ft. size being designed for Ford cars. It is just large enough to admit a Ford touring car with the top either up or down. Any garage of smaller dimensions will not admit the Ford car. This size sells complete with all material cut to fit, paints to match the colors of your house, hardware, locks, nails and roofing.

Size 10x16 ft. is of the same construction. This will admit a car of 110 inch wheel base.

All garages shown are furnished without floors, as practically all auto-owners prefer to build floor of concrete.



The Buick



The Peerless

See prices on inside of front cover.
 Size, 20x20 ft. (two cars).
 See Terms on Page 2.

DISTINCTIVE and attractive. The Peerless will do credit to any surroundings. It is furnished with siding half-way up and shingles on upper part of wall. Very wide eaves with supporting brackets set off building excellently. Large door with glass, together with windows on two sides, give plenty of light.



The Winton

See prices on inside of front cover.
 Size, 12x20 ft. See Terms on Page 2.

THE Winton will take the largest car on the market, with ample room at sides for working about car and for supplies. It has swinging glass doors and one window on each side. It is of a splendid type and always looks good wherever it may be erected. Paint to match your house.

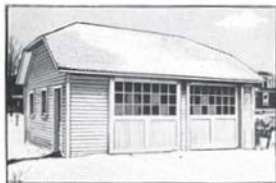


The Maxwell

See prices on inside of front cover.

Size, 10x16 ft. See Terms on Page 2.

ASHINGLE-COVERED Garage that nicely matches any house. Roof extends in front to afford protection during inclement weather. Eaves have exposed rafters. Good, wide double doorway. Compact, but convenient in every respect. Plenty of light.



The Packard

See prices on inside of front cover.

Size, 20x20 ft. (two cars). Two doors.
 Size, 30x20 ft. (three cars). Three doors.
 See Terms on Page 2.

THE broken roof lines of the Packard give it an individuality immediately apparent. The building is furnished with five windows, two large glass doors and small door.

Aladdin Readi-cut Barns

See prices on inside of front cover.

THE word Aladdin means as much to barns as it does to homes. Aladdin barns are built for strength and durability. The quality of the material is far superior to that found in the average barn.

Each Aladdin Barn is very strongly constructed, in fact, stronger than it is usual to build barns of the same size erected by usual methods. The timber in every barn is heavier and stronger than it is really necessary to use in a building of the same size. We appreciate the great weight and strains that are put in farm barns at times, and each barn is constructed so as to stand a greater weight than it will ever be called upon to hold.

They are not only constructed of very heavy timber, but are braced and counter-braced wherever this bracing will increase the strength of the building.

Each barn has material cut to fit ready to nail in place the same as all our other regular dwellings and houses. All of the material is dressed so that the inside of each building presents a finished appearance and is not merely of rough, unfinished lumber.

We furnish all the different kinds and sizes of nails required in the erection of the building; heavy barn door tracks and rollers for the large doors to slide upon; hinges and locks for the smaller doors. The windows have the glass already in them.

We will furnish any colors of paint that you may desire for the outside of the buildings, two coats; shingles or roofing, whichever you prefer, for the roof of the building.

Each barn as we furnish it, and as listed in the cost on the barns, will include a second floor at one end above the stalls. This second floor will be twelve feet long and the width of the end of the barn, and is always included in the first cost of the barn.

Many people prefer to purchase the barn without the first floor, which is really unnecessary in many cases, where hay and grain are intended to be stored into mows. Others prefer to put in either a part or the entire first floor in cement, so that we have quoted the price of the barn exclusive of both floors and stalls, and have listed separate the cost of each. This will enable you to purchase the barn itself and add either the first or second floor or any number of stalls desired.

The Aladdin Special Barn was built to meet the great demand for a barn large enough to shelter two or three horses with wagons, etc. Plenty of room on the first floor for three stalls, with a large mow on the second floor for hay, straw and grain. At the price quoted, the second floor is included, but the first floor is omitted, as many owners prefer a cement or concrete first floor on account of the convenience in cleaning stalls, etc.

SPECIFICATIONS: Aladdin Special Barn. Size, 16x24 ft. For prices refer to inside of front cover. See Terms on page 2.

Sills, 6x6 in. Studding, 2x4 in. Rafters, 2x4 in. Second floor joists, 2x8 in. Siding, 7/8 in., matched; roof sheathing, 1 in., dressed. Flooring, second floor, 1-in. lumber. Shingles or roofing for roof. Large door, 8 ft. 4 in. x 9 ft. 6 in. Small door, 3 ft. 6 in. x 7 ft. 2 in. Windows, sliding sash, glass in place. Paints, any colors, two coats, outside. All hardware, nails, barn-door tracks, hinges. At the price quoted above second floor is included.

ALADDIN Special Barn





The Gable Barn



The Gambrel Barn

THE Gambrel and Gable Roof Barns are here shown. The construction and material of both barns are exactly the same, the only difference being in size and design. These barns have given the greatest satisfaction and service on the western plains of Nebraska and Kansas, where they are subjected to the heaviest strains of wind and storms. This goes to prove the great strength and stability of the construction.

Gambrel and Gable Barn Specifications

For prices refer to inside of front cover. See terms on page 2.

Sills, 6 x 8 in.

Studding for the side walls and gables of barn, 2 x 6 in.

Rafters, 2 x 6 in.

Collar Beams, 2 x 6 in.

Cross braces in outside walls, 2 x 6 in.

Anchor brace, 2 x 6 in.

Plates of top walls, doubled, 2 x 6 in.

First floor joist, 2 x 12 in.

First floor flooring, 2-in. plank.

Second floor joists, 2 x 8 in.

Second floor flooring, inch lumber.

Stall studding, 2 x 4's.

Stall siding, inch lumber, dressed.

Mangers attached to stalls, inch lumber, dressed.

Feed boxes, inch lumber, dressed.

Roof sheathing, inch lumber, dressed.

Roofing or Cedar shingles for roof.

Siding, perpendicular barn boards or horizontal matched siding, whichever you prefer.

Windows, 18 x 24, glazed glass measurement.

Doors, double and single.

Barn door tracks and rollers for sliding doors.

Hinges and locks for swinging doors.

All nails of various sizes for entire building.

Two coats of paint, any color desired for outside.

Complete instructions and illustrations for the erection.

Total height of side walls, 12 ft. gambrel, 15 ft. gable.



See prices on inside of
front cover.

Sovereign Summer Cottages

THE many pleasures and advantages of summer cottage life need no argument here. Thousands and thousands of American families enjoy this stimulating life for several weeks or months each summer.

Sovereign Read-Cut Summer Cottages are distinguished from most summer cottages by the superiority of materials and construction and, while being wonderfully low in price, give every service demanded over a long period of years. Not the least of the pleasures derived by our customers many times is that of actually erecting the cottage themselves. Their vacation is planned with the arrival of the material and the joy of creating and building *their own* cottage lends a keen appreciation to its use in future years.

The frames of all summer cottages are of good, clean No. 1 dressed lumber; of proper size and design not greatly dissimilar to dwelling houses. The siding is practically clear Yellow Pine or Oregon Fir, tongued and grooved. The rooms are all open to the rafters, the partitions being of clear Yellow Pine or Oregon Fir. Ceiling partition lumber finished both sides. The flooring is clear Yellow Pine or Oregon Fir.

Specifications for Sovereign Summer Cottages

The following specifications apply generally to all summer cottages, but vary slightly in some cases, according to the size of the cottage; that is, in relation to size of sills, joists and rafters.

Foundation sills, 4 x 6 in.

Joists, 2 x 6 in.

Studding, 2 x 4 in.

Rafters, 2 x 4 in.

Siding, 7/8-in. tongued and grooved,
bevel face.

Flooring, matched.

Partitions, matched ceiling.

Roof, sheathing 7/8 in.

Shingles or roofing.

Doors, windows (glazed).

Hardware, paint for two coats outside.

any color, nails, locks, hinges.

No plaster or plaster board furnished.



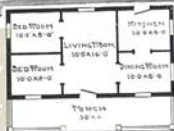
Floor Plan
The Asbury

The Asbury

THE Asbury is a cosy little summer cottage of pleasing lines—built for two. The porch can be screened in to give an out-door living room. The front door has glass in the upper portion, giving additional light to the living room. This is one of the old original summer cottages and has been erected in hundreds of towns and cities throughout the country. At price quoted you get nails, paints, glass—everything to complete the Asbury. See general summer cottage specifications above and Terms on page 2.

The Genesee

WHEREVER erected this cottage has had the most favorable comment. You will save at least \$150 in purchasing this cottage, and at the same time have as strongly built house as is ever erected for summer cottage purposes. Bedrooms are one side of house and dining room and kitchen on other. A splendid type of cottage. See general Specifications, page 114 and Terms on page 2.



Floor Plan—The Genesee



Floor Plan
The Betcone

rear door, is at rear. Here is one of our best sellers and always gives the greatest pleasure to owners. Easily and quickly put up. See general summer cottage specifications, page 114 and Terms on page 2.

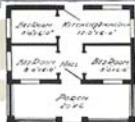
See prices on inside of front cover.

The Betcone

THE plan of the Betcone is a five-room cottage with ample porch. The three bedrooms are plenty large enough for a double bed in each. The living room is also used as a dining room. Kitchen, with

The Statler

YOU can erect the Statler yourself this vacation. And you can do it in a few days' time and save the cost of carpenter work. Just the right size for the family of four or five. Plenty of ventilation throughout—bedrooms—plenty large enough for double beds or two cots. The porch is large and airy, affording an opportunity for out-door sleeping. Enjoy a few days' time this vacation building your own summer home. See General Specifications on page 114 and Terms on page 2.



Floor Plan
The Statler



See prices on inside of front cover.



Floor Plan
The Shoreview

The Shoreview

THE Shoreview is a comfortable summer home of five rooms. A good 10x16 ft. living room is located at the front. Behind the living room are two bedrooms, dining room, and kitchen, making a most complete floor plan with the porch across the front. See General Specifications on page 114 and Terms on page 2.

Summer Cottages

The Luna

See prices on inside of front cover.



Floor Plan
The Luna

See prices on inside of front cover.

A COSY summer home. Plenty of space on front porch—can be used for open-air dining room or sleeping room. Three bedrooms, dining room, living room and kitchen on inside. Plenty of light and air—an abundance of space. Is really one of the neatest cottages imaginable. See general summer cottage specifications, page 114 and Terms on page 2.



Floor Plan
The Seaford

The Seaford

The Shasta

See prices on inside of front cover.

A BIG summer cottage at a small price. Note the 36-ft. porch running all the way across the front of the building. Another one of our pioneer designs. Always makes a good impression and saves a good deal of money. See General Specifications, page 114, and Terms on page 2.



Floor Plan
The Shasta



The Drayton

See prices on inside of front cover.

THE Drayton sells for a low price. Two bedrooms can be arranged by combining living room and dining room. See General Specifications on page 114 and Terms on page 2.



Aladdin Hunter's Lodge

See prices on inside of front cover.

THIS building is designed for settler's house or hunter's lodge. It is built just like other house, strong and substantial. Height of side wall, 7 ft. 6 in. No lath and plaster are furnished with this house at the price quoted. Size, 12 x 16 ft. See Terms on Page 2.

ORDER TO
THE ALADDIN COMPANY

General Offices: BAY CITY, MICHIGAN

Branches: HATTIESBURG, MISSISSIPPI
PORTLAND, OREGON

WILMINGTON, N. CAROLINA
TORONTO, ONTARIO (CANADA)



Your money will be instantly returned if what you purchase from us is not found to be entirely satisfactory in every particular and exactly as represented. Safe arrival of all material is guaranteed.

W. J. Sovereign President

THE ALADDIN CO.



The following order is placed under the absolute guarantee of complete satisfaction to purchaser, which is printed above.

INSTRUCTIONS FOR
SHIPPING MY HOUSE

Date _____

Ship to _____

Street _____ Town _____

County _____ State _____

Via _____ R. P. Is there a Freight Agent there? _____

ORDERED BY _____

Street _____ Town _____

County _____ State _____

Enclosed please find \$ _____ for which ship me at once

Style of House _____ Shown on Catalog Page _____

SIDING OR SHINGLES For Outside Walls _____

SHINGLES OR ROOFING For Roof _____

What Kind of a Foundation will you Use? _____

Color Paint or Stain for Side Walls _____ Trim _____

Color Porch Floor _____

Inside Finish _____

A Few Letters from Owners of ALADDIN HOMES



No Trouble in Fitting.
Ind., July 22, 1919.

Dear Sir:
I am the owner of the "Stanhope" and am certainly well pleased with my bargain. I never figured the exact cost of our home, but am sure we saved from Four to Five Hundred Dollars by buying from the Aladdin.

The material was good, much better than we could buy around here for the same money. The pieces fit perfectly. Had no trouble whatever in fitting them.

Yours respectfully,
EDITH REED.

**Carpenter Estimates \$400
Saving.**

Miss., Aug. 5, 1919.

Dear Sir:

I am satisfied with my Aladdin house. The material was good and my carpenter told me that he thinks I saved about Four Hundred Dollars in labor on the house.

Yours truly,
E. J. ZUFELT.

**Best Car Lumber Ever
Unloaded Here.**

Mo., July 19, 1919.

Dear Sir:

I purchased the "Plaza" and am entirely satisfied with the quality of material as well as treatment received at the hands of the Aladdin Company.

I calculate my "cut to fit" material cost me from six hundred to eight hundred dollars less than I could purchase the best grade of lumber here. Some of the men in this city, who I think are qualified to judge, told me mine was the best car load of lumber ever unloaded here.

Yours truly,
J. L. LAXTON.

Material O. K.

Mich., July 18, 1919.

Dear Sir:

I can say I am well pleased with my Aladdin House and everything was satisfactory in every way. The material was O. K. and the pieces fit well.

I surely did save in building by this method because there is no waste. All material is numbered and numbers run according to place and any carpenter can follow these plans.

Yours truly,
J. VANDEN BERG.

Neighbors Praise Aladdin.
Nebraska, July 20, 1919.

Dear Sir:

We have an Aladdin Home and are well satisfied with it.

The material was just as recommended. We had no trouble in fitting the pieces together. We think we saved as much as Five Hundred Dollars by ordering the Read-cut material. We have had a number of people to look at our home and all praise it.

Yours truly,
WM. WHITNEY.

House is Fine.

Mich., July 20, 1919.

Dear Sir:

I am very much pleased with my Aladdin Home.

I think I saved me a good sum both as to material and price. The house is fine and everything is here and it fits.

I am respectfully,
WM. C. SIMPSON.

Likes Knotless Lumber.

Miss., July 19, 1919.

Dear Sir:

Will state that I figure that I have saved at least 10% on the building of my Winthrop Bungalow. That is on the construction with the price of labor down here very high. As to the material, I am satisfied that I saved at least 15% and also taking in consideration that I got much better lumber than I could purchase down here, having no knots in same.

Yours very truly,
SIG P. WOOLF.

Had no Trouble.

Pa., July 21, 1919.

Dear Sir:

I am not a carpenter but I hired one carpenter and the two of us put up my Aladdin Home together. I am sure I saved between Four and Five Hundred Dollars.

In regard to material, it could not have been better. We hadn't the least bit of trouble in fitting the pieces together. Any one who can read a rule could put an Aladdin house together. Everything fit fine, and I am surely proud of my home.

Yours sincerely,
JOE ACKERS.

**Would Build Aladdin
Way Again.**

Dear Sir:

We certainly are satisfied with our lovely Charleston, and were we to build again we should get an Aladdin Read-cut house. People come for miles to see it.

WM. MAYFIELD.

Saved \$200.

Ind., July 18, 1919.

Dear Sir:

I am pleased to say my Aladdin Read-cut home is all you claimed and more. I received a very liberal amount of material. I am satisfied as I saved about two hundred dollars (\$200.00) on the deal.

Yours sincerely,
O. L. BIEL.

Everything Just As Represented.
Ind. Dec. 6-1918.

Dear Sir:

I am well pleased with my Read-cut Aladdin House and think I saved at least Two Hundred and Fifty or Three Hundred Dollars. The material, in fact everything is just as they represent it to be.

Can truthfully say that I never dealt with more honest and obliging people than the Aladdin Company. The blue-prints and instructions are complete in every detail.

Sincerely yours,
C. S. Cripe

**Perfectly Satisfied in Every
Respect.**

Iowa, July 18, 1919.

Dear Sir:

I built the Hudson a year ago, and am perfectly satisfied in every respect. The material was good and everything fit. I made a big saving by buying a Read-cut house.

Yours truly,
H. J. Dean.

Another Interesting Letter.

Michigan, July 19, 1919.

Dear Sir:

I have the "Raymond" and feel well pleased with same as I saved a good sum by building the Aladdin way.

The material and everything was just as represented. If a man is not a carpenter and wants to build his own house this is the only way.

Everything is numbered and fits right.

Sincerely yours,
CLARENCE H. EVANS.

**COMPLETE ADDRESS OF ANY ALADDIN OWNER
NAMED ABOVE WILL BE SENT UPON REQUEST**



BAY CITY, MICHIGAN ALADDIN TOWN

Every house shown in the Aladdin catalog is erected in Bay City with two or three exceptions. This includes all of the Inverness, The Villa, The Brentwood and The Lamberton. You will find whole streets of Aladdin Houses, whole subdivisions on which only Aladdin Houses are erected.

A most interesting trip could be arranged visiting the Aladdin Mills and inspecting the Aladdin Houses in Bay City. Any one visiting near an Aladdin Mill is earnestly invited to call on us.





W. L. ELEMENTS, President

A. S. BROWN, Vice-President

W. B. BROWN, Cashier

J. P. BROWN, Vice-President

W. B. BROWN, Cashier

W. B. BROWN, Cashier

ORGANIZED 1864

1883

THE FIRST NATIONAL BANK

CAPITAL \$200,000.00

SURPLUS \$200,000.00

Key City, Miss., Dec. 1, 1919

To Aladdin Customers:

We are pleased to testify to our confidence in the Aladdin Company, and to assure you that any confidence you extend them will be honorably treated.

The men behind this organization, who are perfectly responsible financially and otherwise, are all personally known to us, as is their integrity and upright business policy.

This company originated, perfected and established the Read-Cut system of Construction, and is the pioneer as well as the largest manufacturer of houses that we know of.

You may have full confidence that the representations of this company will be fully lived up to.

Very truly yours,

Cashier.

The following banks will also be glad to testify to the integrity of The Aladdin Co. The Chemical National Bank, New York, The First National Bank of Chicago, The First and Old Detroit National Bank of Detroit, Michigan, The First National Bank of Hattiesburg, Mississippi, Bank of Hattiesburg, Mississippi, Murchison National Bank of Wilmington, North Carolina, and First National Bank of Portland, Oregon.





INDEX

Additions	108-109	Marsden	61-62
Aladdin Cities	14	Merrill	26
Barns	112-113	Oakley	94
Boulevard	21	Pasadena	43-44
Brentwood	28-29	Plaza	17-18
Brunswick	81	Plymouth	35
Built-in Fixtures, 104-105-106-107		Pomery	100
Burbank	37	Pomona	19-20
Cadillac	15	Princeton	48
Carolina	71	Raymond	91
Charleston	82-83	Rochester	92-93
Chester	86	Rodney	76
Colonial	50-51	Roseland	30
Dept. of Service	46-47	Selwyn	96
Detroit	77-78	Shadow Lawn	68-69
Dresden	70	Sheffield	84-85
Duplex Houses	46-47	Sheridan	50
Edison	90	Spokane	74
Erie	96	Standard	54-55
Florence	52	Stanhope	40-41-42
Franklin	36	Strathmore	22-23
Garages	110-111	Summer Cottages	114-115-116
Georgia	32-33	Sunshine	79-80
Grayson	34	Tacoma	101
Gretna	75	Thelma	31
Herford	49	Two-Apartment Houses	46-47
Hudson	88-89	Venus	72-73
Industrial Housing	14	Villa	66-67
Interiors	27-58-87	Virginia	16
Introductory Pages	2 to 14	Warren	60
Jordan	95	Willamette	98-99
Kentucky	38-39	Winston	97
Lamberton	24-25	Winthrop	63-64
Leota	65	Worthington	56-57
Maples	45	Yale	58

INDEX OF SUBJECTS

Additions	108-109	Freight	8
Aladdin Cities	14	Garages	110-111
Aladdin Selling Principle	3	Industrial Housing	14
Aladdin System of Construction	3	Interiors	27-58-87
Arches	104	Interior Finish	9
Barns	112-113	Lath and Plaster	9
Built-in Fixtures, 104-105-106-107		Lumber	7-8
Chimneys (see Masonry)	9	Masonry	9
Comparison with Steel Construction	6	Materials Used	2
Dept. of Service	46-47	Reversing Floor Plans	2
Foundation Plans (see Masonry)	9	Summer Cottages	114-115-116
		Terms	2
		Waste	4-5-8







ALADDIN
HOMES

*Manufactured by
the ALADDIN
COMPANY*

*Bay City
Michigan*





Evidence of Aladdin Leadership

THE Aladdin Company is most proud of the medals awarded it by the two great expositions, The Panama-Pacific International Exposition, that most wonderful of all great World's Fairs, granted "Les Grandes Prix," issuing diploma as shown in photograph. The Panama-Pacific medal was issued upon the Model Cottage which Aladdin produced and erected for Uncle Sam. The Michigan Exposition Medal was the result of our building a Kentucky bungalow at the fair for the Northeastern Michigan Development Bureau. Official record is made in the Diploma that The Aladdin Company originated, perfected and established the Read-Cut System of Construction. These facts are quoted here merely as additional evidence of Aladdin's leadership in all things pertaining to Scientific Home Building.



